



**Contra
Costa
County**

To: Board of Supervisors
From: John Kopchik, Director, Conservation & Development Department
Date: March 7, 2017

Subject: Cooperative Funding Agreement to Disburse Navy Mitigation Funds for Improvements to the Bay Point Waterfront Park

RECOMMENDATION(S):

APPROVE and AUTHORIZE the Public Works Director, or designee, to execute the Cooperative Funding Agreement between the East Bay Regional Park District and Contra Costa County to disburse \$450,000 in Navy Mitigation Funds for improvements to the Bay Point Waterfront Park at the Bay Point Regional Shoreline.

FISCAL IMPACT:

No impact to the General Fund. (100% Navy Mitigation Fund)

BACKGROUND:

In the early 1990s, the United States Navy closed vehicular, pedestrian, and bicycle access on the Port Chicago Highway through the Concord Naval Weapons Station. To mitigate this closure, the Navy paid the County \$5 million for transportation improvements in the Port Chicago, Clyde, and Bay Point areas. As of 2008, \$4 million had not been spent. With accumulated interest, the fund had grown to \$8.6 million. To make use of these funds, in June 2008, the Board of Supervisors adopted the Navy Mitigation Fund Expenditure Plan (Expenditure Plan – Exhibit A). The current balance of the fund (as of February 2017) is \$5,536,712.

☒ APPROVE

☐ OTHER

☒ RECOMMENDATION OF CNTY ADMINISTRATOR

☐ RECOMMENDATION OF BOARD COMMITTEE

Action of Board On: **03/07/2017** ☒ APPROVED AS RECOMMENDED ☐ OTHER

Clerks Notes:

VOTE OF SUPERVISORS

AYE: John Gioia, District I Supervisor
Diane Burgis, District III Supervisor
Karen Mitchoff, District IV Supervisor
Federal D. Glover, District V Supervisor

ABSENT: Candace Andersen, District II Supervisor

I hereby certify that this is a true and correct copy of an action taken and entered on the minutes of the Board of Supervisors on the date shown.

ATTESTED: March 7, 2017

David Twa, County Administrator and Clerk of the Board of Supervisors

By: Stacey M. Boyd, Deputy

Contact: Robert Sarmiento (925)
674-7822

The Expenditure Plan identified a number of transportation improvement projects, along with the amount to be allocated to each project. One of these improvements is the Bay Point Waterfront Park Access Improvements Project (Project). The Project is defined as follows in the Expenditure Plan:

BACKGROUND: (CONT'D)

6) Bay Point Waterfront Park Access Improvements

Project will provide easier access, including access for disabled persons to newly established waterfront park west of McAvoy Harbor. Project is one of the recommendations in the Bay Point Waterfront Redevelopment Plan.

Navy Fund Allocation: \$450,000 (full funding)

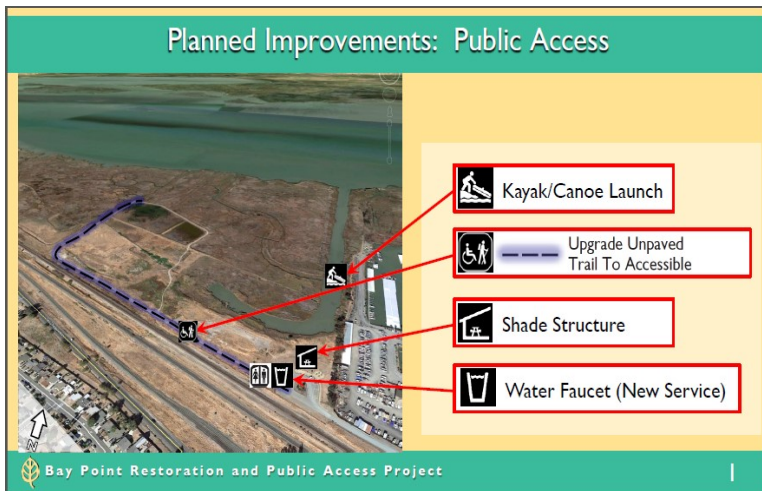
Lead Agencies: East Bay Regional Park District / Contra Costa County

The Project improvements will be inside the Bay Point Regional Shoreline, located just west of McAvoy Harbor off the Port Chicago Highway in Bay Point:



Specific improvements planned (Exhibit B) by the East Bay Regional Park District (EBRPD) consist of the following:

- *Upgrades to the Harrier Trail, the main trail in the Bay Point Waterfront Park,
- *Potable water and ADA-accessible amenities, including restrooms and drinking faucets, and
- *Shade structures



These proposed improvements are consistent with the improvements identified in the 2001 Bay Point Regional Shoreline Land Use Plan (Exhibit C).

The Navy Mitigation Fund Expenditure Plan identifies \$450,000 to be allocated for this project. The EBRPD wishes to enter into a cooperative funding agreement (Exhibit D) with the County to receive these funds so that it can initiate implementation of these improvements. The EBRPD will provide draft project plans to the County for review and comments.

CONSEQUENCE OF NEGATIVE ACTION:

If the cooperative funding agreement is not adopted, the East Bay Regional Park District will not have the funding to implement improvements to the Bay Point Waterfront Park.

ATTACHMENTS

- Exhibit A - Navy Mitigation Fund Expenditure Plan
- Exhibit B - Letter, Delta Trail Waterfront Improvements Request
- Exhibit C - Bay Point Regional Shoreline Land Use Plan
- Exhibit D - Cooperative Agreement - Waterfront Park Access Improvements