

PC

Stacey Boyd

From: Jason Schwarz <~~jschwarz28@hotmail.com~~>
Sent: Friday, June 9, 2017 2:24 PM
To: Clerk of the Board
Cc: pguillory@healthright360.org; martinnb@usc.edu
Subject: SB 844 Jail Project Proposal
Attachments: CAB SB 844 powerpoint FINAL.pptx; CAB Listing of Interviews & Information Collection Jail Project Proposal.docx

To Clerk of the Board of Supervisors of Contra Costa County:

Pursuant to its mission to provide the Board of Supervisors with community input on issues relating to public safety realignment, the Community Advisory Board on Public Safety Realignment (CAB) is pleased to share with the Board of Supervisors the following items relating to the Sheriff's SB 844 jail project proposal:

1. Summary of the findings of CAB's efforts to gather community inputs relating to the SB 844 jail project proposal.
2. List of individuals and organizations CAB met with to gather community inputs on the project proposal.

We would greatly appreciate if you could circulate these materials to the Supervisors for their consideration.

Please acknowledge receipt of this email and the two attachments, and contact me with any questions.

Sincerely,

Jason Schwarz

CAB Chair

Purpose

The purpose of this presentation and following discussion is to establish a factual basis for understanding of the Sheriff's SB 844 proposal and have an informed discussion about whether CAB should develop a recommendation to the BOS to accept or reject SB 844 funds.

Please hold comments and questions until the end of the presentation.

Problem Overview

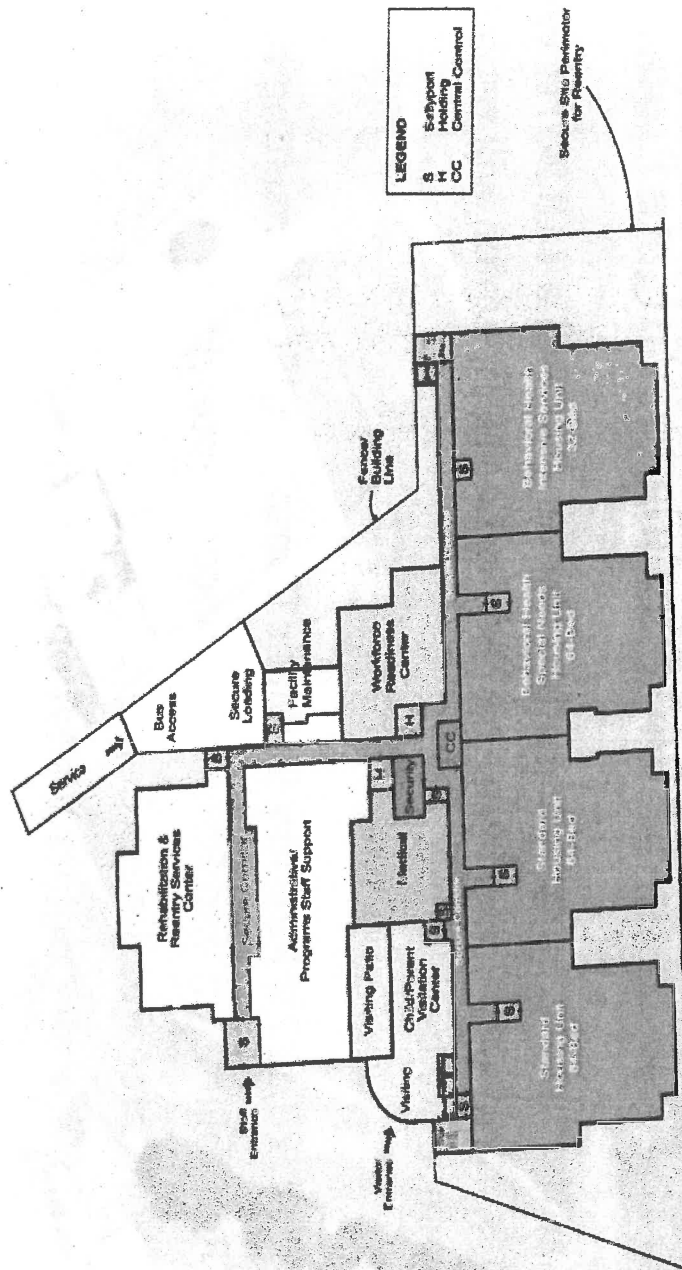
- Due to excessive overuse and crowding of the facility MDF is deteriorated and poses serious safety concerns. **Incidents of assault have increased by 69% over the past 4 years, with the trend further accelerating, averaging 18 incidents/month (JNA p. 11).**
- Chronic overcrowding causes **chronic maintenance problems** at the facility which further compromises safety (JNA p. 10).
- Overtime, it became the County's only high-security facility, resulting in a population increase to 695; 180% of its original design (Jail Needs Assessment, Aug. 2015, pp. 8-15).
- With day rooms sized for 48 people, only about 50% of each unit's residents can be allowed out of their cells at a time, leading to **long periods of confinement** with no access to services, recreation, socialization, or physical activity (JNA p. 9-15)
- The only services available are independent-study courses, a library cart, chaplain services, and psychiatric assessment and management.

Decision Point 1: Request for SB 844 Funding to Mitigate Problems

- Constructing at the West County Detention Center (WCDC) a 118,907sf West County Reentry, Treatment, and Housing Facility (WRTH), which will replace 416 MDF high-security beds at MDF
- Build a dedicated, 20,127sf Reentry Services Complex (RSC), consisting of :
 - a 7,845sf Rehabilitation and Reentry Services Center;
 - a 3,570sf Workforce Readiness Center;
 - a 2,125sf Child/Parent Contact Visitation Center;
 - 4,235sf for Program Offices and Administration Areas; and
 - a 2,352sf Medical/Psychiatric Services clinic.
- The County's new Rehabilitation and Reentry Services program (R&R) will be housed at the RSC.

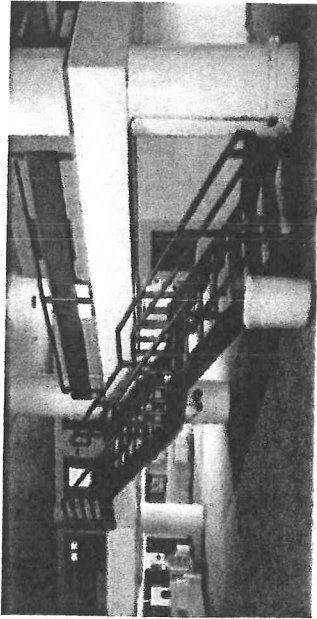
Decision Point 1: Request for SB 844 Funding to Mitigate Problems

Site Plan



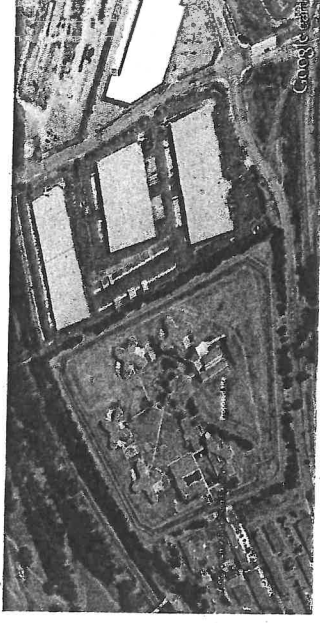
Decision Point 1: Request for SB 844 Funding to Mitigate Problems

160 M



vs.

95 M



To renovate the MDF is not feasible, economical, or efficient.

- The MDF is structurally unified;
- The existing footprint does not allow for expansion upward or outward; and
- Lack of existing adequate program space.

To renovate the WCDF is not feasible, economical, or efficient.

- The cells have no plumbing, as required for high security housing, and cells would not conform to Title 24 standards if plumbing added.
- Programs, visiting, and services are not located on the housing units.
- The open campus style setting is not safe for the high security population.
- Court holding cells not located on the housing units.

Decision Point 1: Request for SB 844 Funding to Mitigate Problems

Positive Feedback: Opportunity for Change	Concerns from the Community : Lack of Trust
The County acknowledges MDF issues of overcrowding and building deterioration as well as the need for an increase of capacity at WCDF to offer more pre-release reentry services.	Over classification of inmates exaggerates number of high security inmates making it unclear how many high security inmates there actually are and if that number justifies a \$90 million jail construction or consideration of a less costly alternative.
Space creates adequate housing for high security inmates that will also effectively meet their reentry and mental health needs.	Public belief that "If you build it, more will come."
Jail to Communities Model	Proposal does not address other needs of MDF other than overcrowding. MDF is still Mental Health and Reentry services poor.

Decision Point 1: Request for SB 844 Funding to Mitigate Problems

Positive Feedback: Opportunity for Change	Concerns from the Community : Lack of Trust
--	--

Concluding WCDF ICE contract will free up 20% of WCDF to meet the County needs rather than prioritizing jail needs (East Bay Times) and is more cost effective.

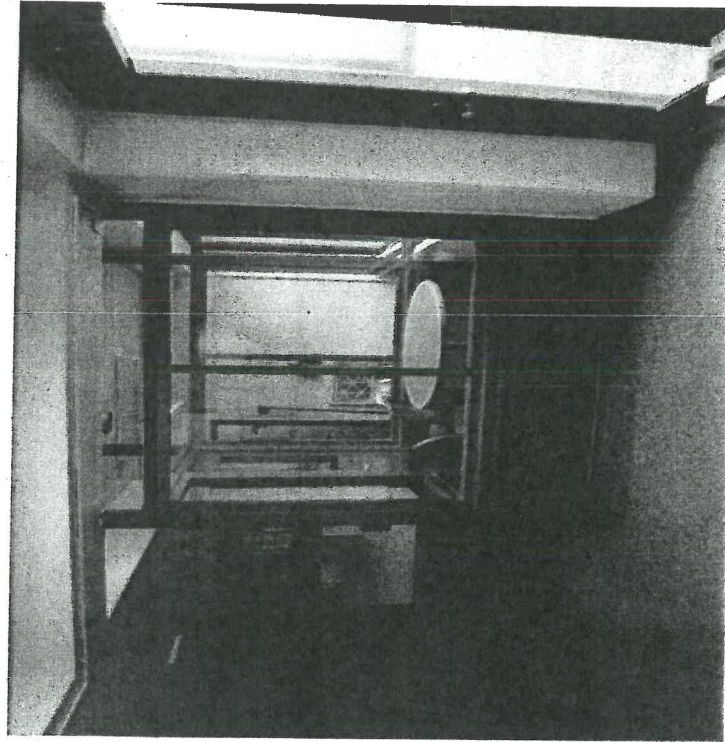
By 2019, 770 high security beds needed with only 691 beds available – 416 @ WCDF & 275 @ MDF
- Reentry Services included in proposal may help to reduce this projection)

WCRH Construction unintentionally increases public lack of trust, particularly immigrant lack of trust due to County ICE contract. Community mistrust leads to an unintended social cost of immigrants not accessing benefits, not going to school, not reporting crime and more probation/parole violations. Believes best allocation is to build new Mental Health Facility or increase investment in current reentry services.

Decision Point 2: Mitigation of Safety, Efficiency, and Programming Needs Addressed by the SB 844 Proposal.

- Eliminate the safety and crowding concerns at MDF by moving more than 400 individuals from MDF into the new WORTH, allowing MDF to return to single-cell direct supervision for which it was designed.
- Increase access to programs and services by constructing an RSC available to everyone housed at WORTH; repurposing closed MDF housing units to allow for increased programs for those remaining there; and establishing an Office of Reentry and Rehabilitative Services (OR&R) to manage services at all three jails.
- Improve operational efficiency by leveraging existing assets at WORTH by strategically placing staff stations between WORTH's housing units while providing substantial program spaces on these units, increasing unit count while reducing unit size to allow for more effective separation of certain populations, and providing opportunities for "cohort-specific" units to provide dedicated housing and programs for other populations, such as 18-24 year old men - the jail's most populous age group .
- Improve conditions and services for incarcerated people with behavioral health issues by providing specialized housing in WORTH; repurposing Building 4 of WORTH into the Women's Special Services building to ensure incarcerated women have regular access to psychiatric and clinical resources; and providing both men and women with gender-responsive, trauma-informed, evidence-based services
- Reduce trauma and stigmatization for children of incarcerated parents while improving family stability and post-release reunification outcomes through the implementation of an innovative child/parent program. Parents enrolled in R&R's Family Matters program will have access to regular, therapeutically supported contact-visits with their minor children in WORTH's state-of-the-art, family-focused Child/Parent Visitation Center. This unique, in-person visitation facility, when combined with other contact, non-contact, and video-visitation facilities provides face-to-face visitation capacity

Decision Point 2: Mitigation of Safety, Efficiency, and Programming Needs Addressed by the SB 844 Proposal.

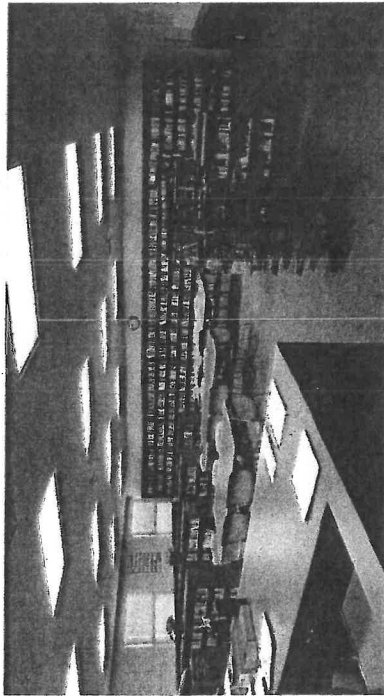
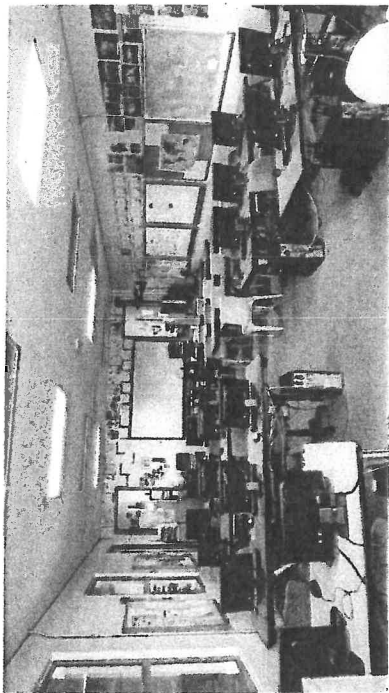


Current Male Programs Offered at the MDF:

- Independent Study
- Religious Programs
- Library Cart (delivery only)

The MDF also serves as the de facto mental health facility, despite utter lack of suitability to meet this need.

Decision Point 2: Mitigation of Safety, Efficiency, and Programming Needs Addressed by the SB 844 Proposal.



Current Male Programs Offered at the WCDF:

- Adult Basic Education
- General Education Development
- High School Diploma
- Computer Applications and Web Design
- D.E.U.C.E • ESL
- Independent Study
- Parenting Inside Out
- Religious Programs
- Library Program
- Narcotics Anonymous
- Alcoholics Anonymous
- Batterer's Workshop
- CBO Reentry Services
- AB109 Mentorship Program
- Faith Based Services

Decision Point 3: Allocation of Effort & Use of Funds Compared to Project Objectives

- The cost of constructing 320 Standard Housing Units and 96 Behavioral Health beds is estimated at about \$40 million
 - Cost of the program spaces within the housing units is about \$8 million and cost of the Reentry Services Complex is about \$9 million.
 - Remaining construction costs cover design, management, and other costs that benefit the program objectives proportionately.
- Total cost of project is 95.2 million with a \$22.0 million in cash and \$3.2 million in-kind. The Sheriff intends to fund the cash match using \$4.5 million from Sheriff's Plant Acquisition Fund, \$2.5 million from AB 109 Public Safety Realignment Revenue* and \$15 million from General Fund Reserve.

* Sheriff's cash match from Plant Acquisition Fund and AB 109 funding sources were previously earmarked for this purpose for the County's SB 1022 and SB 863 funding application.

Decision Point 3: Allocation of Effort & Use of Funds Compared to Project Objectives

Positive Feedback	Concerns from the Community More cost effective ways to address problem
<p>Cost of program spaces and RSC, which are explicitly consistent with the project objectives, represent 60% of the total budget.</p>	<p>More cost effective ways to use \$25 million County match:</p> <ul style="list-style-type: none"> • Improve Mental Health access for entire community (i.e. build new facility in the community) • Increase post-release reentry programs or pre-post release reentry service connections. • invest in crime prevention to reduce the jail population rather than invest more scarce resources into the incarcerated population (East Bay Times).
<p>SB 844 proposal creates a model to redress conditions and trauma that takes place in the County's jails and ensure that people receive reentry services needed to reduce recidivism.</p>	<p>Prison Law Office believes it is more cost effective to reduce jail population rather than increase jail capacity. Increasing capacity does not provide immediate resolve to issues at MDF, but reducing jail population is more efficient.</p>

Decision Point 3: Allocation of Effort & Use of Funds Compared to Project Objectives

Positive Feedback

In spite of costing more money to implement this year, the cost of expanding the WCDF still provides a cheaper alternative to the County than remodeling MDF.

Jail to Communities model provides community and ORJ oversight to ensure that there is accountability to meet goals and objectives of SB 844 proposal.

Concerns from the Community

More cost effective ways to address problem

This year's Jail Proposal Costs More Money to Implement

Lack of public trust for use of spending from Sherriff's office due to lack of ongoing transparency with Sherriff's fund.

Decision Point 4: Operational Costs: Efficiency and Sustainability

- The new facility is estimated to use only 60 to 70% of the energy of MDF and to cost less than half to maintain.
- The MDF operating cost reductions, combined with the closing of 2 housing units at MDF, result in a net reduction in utility and maintenance costs of about \$500,000 annually.
- The project's plan to reassign substantial staff including Sheriff's Deputies, provides tremendous cost-efficiencies.
- The net incremental annual operating cost is \$5,050,738, of which 2,898,634 (57%) is for program costs and \$2,152,104 (43%) is for SO personnel.
 - Identified funding sources for this net increase include:
 - the Inmate Welfare Fund at \$70,000;
 - SO's current AB 109 funds at \$1,329,780;
 - County General Funds at \$3,150,958; and
 - \$500,000 in net operational savings

Decision Point 5: Agreement Not to Lease Beds if Increasing County Capacity

The County agrees that if the project results in a net increase in rated beds, the County will not lease capacity in the SB 844 financed adult local criminal justice facility to any other public or private entity for a period of 10 years beyond the completion date of the adult local criminal justice facility.

Decision Point 5: Agreement Not to Lease Beds if Increasing County Capacity

Positive Feedback

0 additional beds added to construction plan
(*net -4 beds*)

Concerns from the Community

More cost effective ways to address problem

Lack of trust that Sheriff's Office will not lease or use beds.

Questions?

CAB Community Outreach and Information Gathering about the SB 844 Jail Project Proposal

List of Interviewees and Data Collection Steps

- 3/23/17, Tour of Martinez Detention Facility (MDF), conducted by the MDF Chief
- 3/29/17, Interview with Robert Roger, District Coordinator in the Office of County Supervisor John Gioia. In addition, Robert Roger forwarded a position statement from the Prison Law Office with respect to the County's potential application for funds from the Board of State and Community Corrections for jail construction.
- 3/29/17, Interview with Donte Blue from the Office of Reentry and Justice
- 4/12/17, Interviewed Claudia Jimenez, Contra Costa Racial Justice Coalition
- 4/12/17, Interviewed Joe Summers, Contra Costa AFL-CIO Labor Council. Handed over adopted resolution opposing the West County Jail Expansion from the Contra Costa AFL-CIO Labor Council. Also forwarded letter from Dr. Terry A. Kupers, M.D., M.S.P.
- 4/13/17, Interview with BOS Diane Burgis at her Brentwood Office
- 4/13/17, Position paper from the Democratic Party of Contra Costa County
- 4/19/17, Tour of the WCDF facility, conducted by the WCDF Chief
- 5/01, Tour of the Reentry Success Center, Richmond
- 5/03, interview of BOS Candace Anderson

Subject: Jail expansion lacks fiscal prudence

From: Rita Barouch (mailto:rita@stglobal.net)

To: john.gioia@bos.cccounty.us; diane.burgis@bos.cccounty.us; supervisormitchoff@bos.cccounty.us; district5@bos.cccounty.us; supervisorandersen@bos.cccounty.us;

Date: Tuesday, June 13, 2017

Dear Contra Costa Supervisor,

I am representing CCC SEIU 1021 COPE, and a Contra Costa voter. For over 23 years I assessed and addressed the psycho/social needs of low income women and families in CCC Health Services, in maternal and child health programs. I am advocating against a jail expansion; it goes against the current direction of California Senate bills and policy makers who are reducing incarceration and expanding community programs.

I am deeply concerned, do you know what the fiscal impact would be if you approve this jail expansion? If you spend \$25 Million matching to build it and at least \$5 Million every year after for operations, you will be spending \$125 Million over the next 20 years. !!

How will you pay County Labor contracts, services for the most vulnerable among us, environmental protection. How can you assure us that children, elderly and disabled will not loose vital food, housing, health services if you direct these precious millions into a non essential jail expansion?

At a time when significant funding cuts from Washington are likely, responsible elected leaders need to protect their valuable financial resources for essential health and environmental services...we simply cannot afford to fund this jail expansion. It lacks fiscal prudence and is bad public policy.

Sincerely yours,

Rita Barouch MSW

REQUEST TO SPEAK FORM (2 minute limit)

I wish to speak on Agenda Item # D-8

Complete this form and place it in the upright box near the speaker's podium, and wait to be called by the Chair.

Date: 6/13/17

Personal information is optional. This speaker's card will be incorporated into the public record of this meeting.

My comments will be: ☐ General
☐ For
☒ Against

NAME (Print) Bill Schneider NO
To ensure your name is announced correctly, you may include phonetic spelling.

☐ I wish to speak on the subject of:

Address: 17 [redacted] r

City: Pleasant Hill, CA 94523

Phone: 925 [redacted]

I am speaking for: ☒ Myself
☐ Organization: _____

☒ I do not want to speak but would like to leave comments for the Board to consider.
(Use the back of this form.)



Information for Speakers:

In lieu of speaking, I wish to submit these comments:

Deposit this form in the upright box next to the speaker's podium before the Board's consideration of your item.

There is a serious mental health issue that must be addressed before any consideration of a jail expansion should go forward. Why are we renting beds to ICE!!!

Wait to be called by the Chair. Please speak into the microphone at the podium.

Begin by stating your name and your city or area of residence, and whether you are speaking for yourself or on behalf of an organization.

If you have handout materials, please give them to the Clerk.

Avoid repeating comments made by previous speakers.

REQUEST TO SPEAK FORM (2 minute limit)

Complete this form and place it in the upright box near the speaker's podium, and wait to be called by the Chair.

Personal information is optional. This speaker's card will be incorporated into the public record of this meeting.

NAME (Print) Francisco Torres
To ensure your name is announced correctly, you may include phonetic spelling.

I wish to speak on Agenda Item # D8

Date: 5.13.17

My comments will be: ☐ General
☐ For
☒ Against

☐ I wish to speak on the subject of:

Address: [REDACTED] St

City: Pittsburg CA

Phone: [REDACTED]

I am speaking for: ☒ Myself
☐ Organization:

☒ I do not want to speak but would like to leave comments for the Board to consider.
(Use the back of this form.)

Because your time ran over. & I need to go to work

Information for Speakers:

In lieu of speaking, I wish to submit these comments:

Deposit this form in the upright box next to the speaker's podium before the Board's consideration of your item.

Wait to be called by the Chair. Please speak into the microphone at the podium.

Begin by stating your name and your city or area of residence, and whether you are speaking for yourself or on behalf of an organization.

If you have handout materials, please give them to the Clerk.

Avoid repeating comments made by previous speakers.

I'm Against the Board voting for \$20 million for Jail expansion. You now have 70 million. Citizens need health care, education, job, rehab outside of Jail. It's too expensive & we should take before our citizens go into the incarceration, Jail, Not after.

REQUEST TO SPEAK FORM (2 minute limit)

Complete this form and place it in the upright box near the speaker's podium, and wait to be called by the Chair.

Personal information is optional. This speaker's card will be incorporated into the public record of this meeting.

NAME (Print) Daniel Zwickel

To ensure your name is announced correctly, you may include phonetic spelling.

Address: [redacted] 1427

City: Vallejo 94590

Phone: [redacted]

I am speaking for: ☐ Myself

☒ Organization: Mt. Diablo
Unitarian Universalist
Church

I wish to speak on Agenda Item # D8

Date: June 13, 2017

My comments will be: ☐ General
☐ For
☒ Against

☐ I wish to speak on the subject of: _____

☒ I do not want to speak but would like to leave comments for the Board to consider.
(Use the back of this form.)



Information for Speakers:

Deposit this form in the upright box next to the speaker's podium before the Board's consideration of your item.

Wait to be called by the Chair. Please speak into the microphone at the podium.

Begin by stating your name and your city or area of residence, and whether you are speaking for yourself or on behalf of an organization.

If you have handout materials, please give them to the Clerk.

Avoid repeating comments made by previous speakers.

In lieu of speaking, I wish to submit these comments:

Though I now live in Vallejo, I spend a
lot of time in W.C., and my church family
is there. And the impact is Bay Area-
wide. Fiscal responsibility, is not com-
pensation dictates funding of services,
Not jail expansion. AND we
must sever the ties between the
sheriff's office and ICE.

REQUEST TO SPEAK FORM (2 minute limit)

Complete this form and place it in the upright box near the speaker's podium, and wait to be called by the Chair.

Personal information is optional. This speaker's card will be incorporated into the public record of this meeting.

NAME (Print) NANCY NEWHART

To ensure your name is announced correctly, you may include phonetic spelling.

Address: [REDACTED]

City: WALNUT CREEK

Phone: [REDACTED]

I am speaking for: ☐ Myself
☐ Organization: _____

Comments below
I wish to speak on Agenda Item # D8

Date: 6/12/17

My comments will be: ☐ General
☐ For
☒ Against

☐ I wish to speak on the subject of:

319 I AM UNABLE TO STAY:

PLEASE READ MY

✓ COMMENT OUT LOUD.

I do not want to speak but would like to leave comments for the Board to consider. (Use the back of this form.)

NO ON JAIL EXPANSION

Information for Speakers:

Deposit this form in the upright box next to the speaker's podium before the Board's consideration of your item.

Wait to be called by the Chair. Please speak into the microphone at the podium.

Begin by stating your name and your city or area of residence, and whether you are speaking for yourself or on behalf of an organization.

If you have handout materials, please give them to the Clerk.

Avoid repeating comments made by previous speakers.

In lieu of speaking, I wish to submit these comments:

WE NEED SERVICES NOT JAILS.

IF YOU LOCK UP A MENTALLY

ILL PERSON PERSON WITH

NO ATTENTION TO THEIR

HEALING & EXPECT THEM TO

BECOME REHABILITATED.

THIS IS A LACK OF KNOWLEDGE.

MOST NORMAL PEOPLE, IF

LOCKED UP, WOULD NOT

THRIVE IN THOSE CONDITIONS.

I VOTE NO ON JAIL EXPANSION.

REQUEST TO SPEAK FORM (2 minute limit)

Complete this form and place it in the upright box near the speaker's podium, and wait to be called by the Chair.

Personal information is optional. This speaker's card will be incorporated into the public record of this meeting.

NAME (Print) Benevieve Smith
To ensure your name is announced correctly, you may include phonetic spelling.

Address [REDACTED]

City: Orinda

Phone: [REDACTED]

I am speaking for: ☒ Myself
☒ Organization: MDUUC

I wish to speak on Agenda Item # D8

Date: _____

My comments will be: ☐ General
☐ For
☒ Against

☐ I wish to speak on the subject of:

Instead of speaking
please read my
comments out loud

☒ I do not want to speak but would like to leave comments for the Board to consider.
(Use the back of this form.)

No on jail expansion

Information for Speakers:

Deposit this form in the upright box next to the speaker's podium before the Board's consideration of your item.

Wait to be called by the Chair. Please speak into the microphone at the podium.

Begin by stating your name and your city or area of residence, and whether you are speaking for yourself or on behalf of an organization.

If you have handout materials, please give them to the Clerk.

Avoid repeating comments made by previous speakers.

In lieu of speaking, I wish to submit these comments:

I am strongly opposed
To the jail expansion
which is a huge waste
of taxpayers money, now
& in the future! This
money should be spent
on actual services to
the taxpayers!! If you
were to vote for the expansion
the public deserves a
well thought out & convincing
argument

June 13, 2017

Contra Costa County BOS:

My name is Pat Reyes and I live in San Ramon, CA. I am a public health professional and have worked as an evaluation consultant with health, human services and justice programs for almost 30 years.

Next week you are voting on our annual budget. And you are preparing to invest a great deal of money into the building and maintenance of a jail renovation. This does come with the benefit of better facilities to treat those with mental illness. And yes we have been promised that the intent is not to house more people but to relieve overcrowding. But in the end this does increase the capacity of our county to incarcerate members of our community. And a jail abhors a vacuum. Those beds will be filled one way or another.

So I must ask why does our county want to expand capacity of our jails when the trend in our state is to reduce incarceration rates? In 2014 the voters of California passed Proposition 47, the Safe Neighborhoods and Schools Act, which seeks to ensure that prison spending is focused on violent and serious offenses, and to maximize alternatives for non-serious, nonviolent crime. Currently our legislature is considering bills to reform our money bail system (SB 10) and to repeal ineffective sentencing enhancements, the Rise Act (SB 180). And of course SB 54 the California Values Act would prohibit use of state and local resources for the purposes of deporting members of our community. These and other similar efforts down the line will have the effect of reducing our jail populations and freeing up funds to invest in communities.

Last week the Contra Costa County Health Services Dept was awarded a 6 million dollar grant from the BSCC as part of Proposition 47. These funds (focused primarily in East County) will help keep people with behavioral health issues out of jail for low-level crimes by providing community based treatment, employment and housing support. We have available to us the collaborative courts model of drug court, mental health court, homeless court, vet court. It is this type of service-rich community-based diversion and treatment programming that our county should be expanding upon and investing in. They provide a much better return on investment than incarceration.

REQUEST TO SPEAK FORM (2 minute limit)

Expansion of Jail

I wish to speak on Agenda Item # D9

Complete this form and place it in the upright box near the speaker's podium, and wait to be called by the Chair.

Date: June 13, 2017

Personal information is optional. This speaker's card will be incorporated into the public record of this meeting.

My comments will be: ☐ General
☐ For
☐ Against

NAME (Print) Sara Spence

To ensure your name is announced correctly, you may include phonetic spelling.

☐ I wish to speak on the subject of:

Address: [redacted] 2

City: Walnut Creek

P. [redacted]

I am speaking for: ☐ Myself
☐ Organization: _____

☒ I do not want to speak but would like to leave comments for the Board to consider.
(Use the back of this form.)

Information for Speakers:

Deposit this form in the upright box next to the speaker's podium before the Board's consideration of your item.

Wait to be called by the Chair. Please speak into the microphone at the podium.

Begin by stating your name and your city or area of residence, and whether you are speaking for yourself or on behalf of an organization.

If you have handout materials, please give them to the Clerk.

Avoid repeating comments made by previous speakers.

In lieu of speaking, I wish to submit these comments:

The US has the largest prison
population in the world and the
second-highest per capita
incarceration rate. We need
to spend our money providing
services for our residents,
not locking them up.
No JAIL EXPANSION!

Expansion of Prison

REQUEST TO SPEAK FORM (2 minute limit)

I wish to speak on Agenda Item # D8 D8

Complete this form and place it in the upright box near the speaker's podium, and wait to be called by the Chair.

Date: June 13, 2017

Personal information is optional. This speaker's card will be incorporated into the public record of this meeting.

My comments will be: ☐ General
☐ For
☐ Against

NAME (Print) Elliott Garenhous
To ensure your name is announced correctly, you may include phonetic spelling.

☐ I wish to speak on the subject of:

Address: [REDACTED] # 7

City: Danrut Creek, CA 94595

Phone: 415 [REDACTED]

I am speaking for: ☐ Myself
☐ Organization: _____

☒ I do not want to speak but would like to leave comments for the Board to consider.
(Use the back of this form.)

Information for Speakers:

In lieu of speaking, I wish to submit these comments:

Deposit this form in the upright box next to the speaker's podium before the Board's consideration of your item.

County should use money to replicate programs like Huckleberry

Wait to be called by the Chair. Please speak into the microphone at the podium.

House in San Francisco but by adjusting the program to assist

Begin by stating your name and your city or area of residence, and whether you are speaking for yourself or on behalf of an organization.

those with mental health issues & abuse issues. Jails & cells ARE NOT

If you have handout materials, please give them to the Clerk.

correctional institutions

Avoid repeating comments made by previous speakers.

Recidivism is higher in a prison environment than in one that provides shelter & services in a more personalized situation

Money should be used wisely & not for EXPANDING PRISONS

REQUEST TO SPEAK FORM (2 minute limit)

Complete this form and place it in the upright box near the speaker's podium, and wait to be called by the Chair.

Personal information is optional. This speaker's card will be incorporated into the public record of this meeting.

NAME (Print) Sheli Cyderman
To ensure your name is announced correctly, you may include phonetic spelling.

Address: _____

City: _____

Phone: _____

I am speaking for: ☒ Myself
☐ Organization: _____

I wish to speak on Agenda Item # D-8

Date: 6/13/17

My comments will be: ☐ General
☐ For
☐ Against

☐ I wish to speak on the subject of:

Jail Construction

☒ I do not want to speak but would like to leave comments for the Board to consider.
(Use the back of this form.)

Information for Speakers:

Deposit this form in the upright box next to the speaker's podium before the Board's consideration of your item.

Wait to be called by the Chair. Please speak into the microphone at the podium.

Begin by stating your name and your city or area of residence, and whether you are speaking for yourself or on behalf of an organization.

If you have handout materials, please give them to the Clerk.

Avoid repeating comments made by previous speakers.

In lieu of speaking, I wish to submit these comments:

I am here with two camps. Dystonia
Parkinsons. I stand in solidarity
with those opposed to jail expansion
Thank you.

D.2

I wish to speak on Agenda Item # Elver Ben

Date: 6/13/77

NAME (Print) Rafib Norzei
To ensure your name is announced correctly, you may include phonetic spelling.

☐ I wish to speak on the subject of:

City: Fremont CA 95110

Phone: _____ 10

I am speaking for: ☒ Myself
☐ Organization: _____

☒ I do not want to speak but would like to leave comments for the Board to consider.
(Use the back of this form.)

In lieu of speaking, I wish to submit these comments:

I am against the ben.
as small busnes owner we
are already saffering ~
Also the bussnes go to
the ather city and
county.

Begin by stating your name and your city or area of residence, and whether you are speaking for yourself or on behalf of an organization.

If you have handout materials, please give them to the Clerk.

Avoid repeating comments made by previous speakers.

REQUEST TO SPEAK FORM (2 minute limit)

Complete this form and place it in the upright box near the speaker's podium, and wait to be called by the Chair.

Personal information is optional. This speaker's card will be incorporated into the public record of this meeting.

NAME (Print) Lyan (Leeyan) Pernala

To ensure your name is announced correctly, you may include phonetic spelling.

Address: [REDACTED]

City: San Pablo (Tara Hills)

Phone: _____

I am speaking for: ☒ Myself
☐ Organization: _____

I wish to speak on Agenda Item # D2

Date: 6/13/2017

My comments will be: ☐ General
☒ For
☐ Against

☐ I wish to speak on the subject of: _____

☒ I do not want to speak but would like to leave comments for the Board to consider.
(Use the back of this form.)

Information for Speakers:

Deposit this form in the upright box next to the speaker's podium before the Board's consideration of your item.

Wait to be called by the Chair. Please speak into the microphone at the podium.

Begin by stating your name and your city or area of residence, and whether you are speaking for yourself or on behalf of an organization.

If you have handout materials, please give them to the Clerk.

Avoid repeating comments made by previous speakers.

In lieu of speaking, I wish to submit these comments:

(Please see attached letters)

June 13, 2017

Contra Costa County Board of Supervisors
651 Pine Street
Martinez, CA 94553

Dear Supervisors:

I am writing as a concerned citizen of Contra Costa County to express support for ordinances that will:

- Prohibit the sale of flavored tobacco products, including menthol cigarettes, little cigars, and electronic smoking devices
- Prohibit *new* tobacco retailers from locating within 1000 feet of schools, parks, playgrounds, and libraries; or within 500 feet of another retailer
- Require a minimum pack size of 10 for little cigars and cigarillos
- Require pharmacies be tobacco-free

As a resident, I want to live in a healthy, vibrant community – and tobacco retailers detract from that. My husband and I bought our home in Tara Hills with the hope that over the years, this area will develop with restaurants, shops, and other businesses that we can patronize and enjoy. **Increased tobacco retailers will cheapen the community and increase county health costs by promoting smoking.**

Having worked and volunteered in the county, I know that there are efforts to improve our community health. **A widespread presence of tobacco in retail setting undermines community health efforts by normalizing the use of tobacco products, making it more difficult for smokers to quit, and encouraging youth to take up smoking.** Tobacco retailers promote flavored cigarillos, e-cigs, and hookahs, which target kids – these shops should not be near schools, parks, libraries, and homes. We know that 90% of smokers started before the age of 18 and 80% of youth who ever used tobacco started with a flavored product.

As an asthmatic, I don't want an uptake of smoking and smoke shops in my neighborhood. It's bad for community health and it's bad for community development as they increase health, nuisance, and environmental costs. I urge you to limit the development of new tobacco retailers; prohibit the sale of flavored tobacco products including menthol, e-cigs, and hookahs; require minimum pack sizes; and require pharmacies to be tobacco free.

I humbly request that you figure out ways to attract better businesses that will add value to our community – and limit the development and influence of tobacco retailers that take value away.

Thank you for your time and consideration.

Kindly,



Lyan Pernala

The Butchart Gardens
Victoria BC Canada



No to
jail
expansion
No please No!

Board of
supervisors
651 Pine St
Martinez CA
94553



Loft
refle
renc

Roxann Zarchin
Lactation Consultant
4828 Meadowbrook Dr.
El Sobrante, CA 94803

www.butchartgardens.com

BG 24

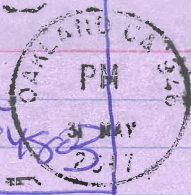
Printed in Australia on wood free paper

Our county funds are
desperately needed for prevention,
mental health, health care
job training, affordable housing,
and reentry services to
prevent new and further
incarceration

Fund These
Programs Instead

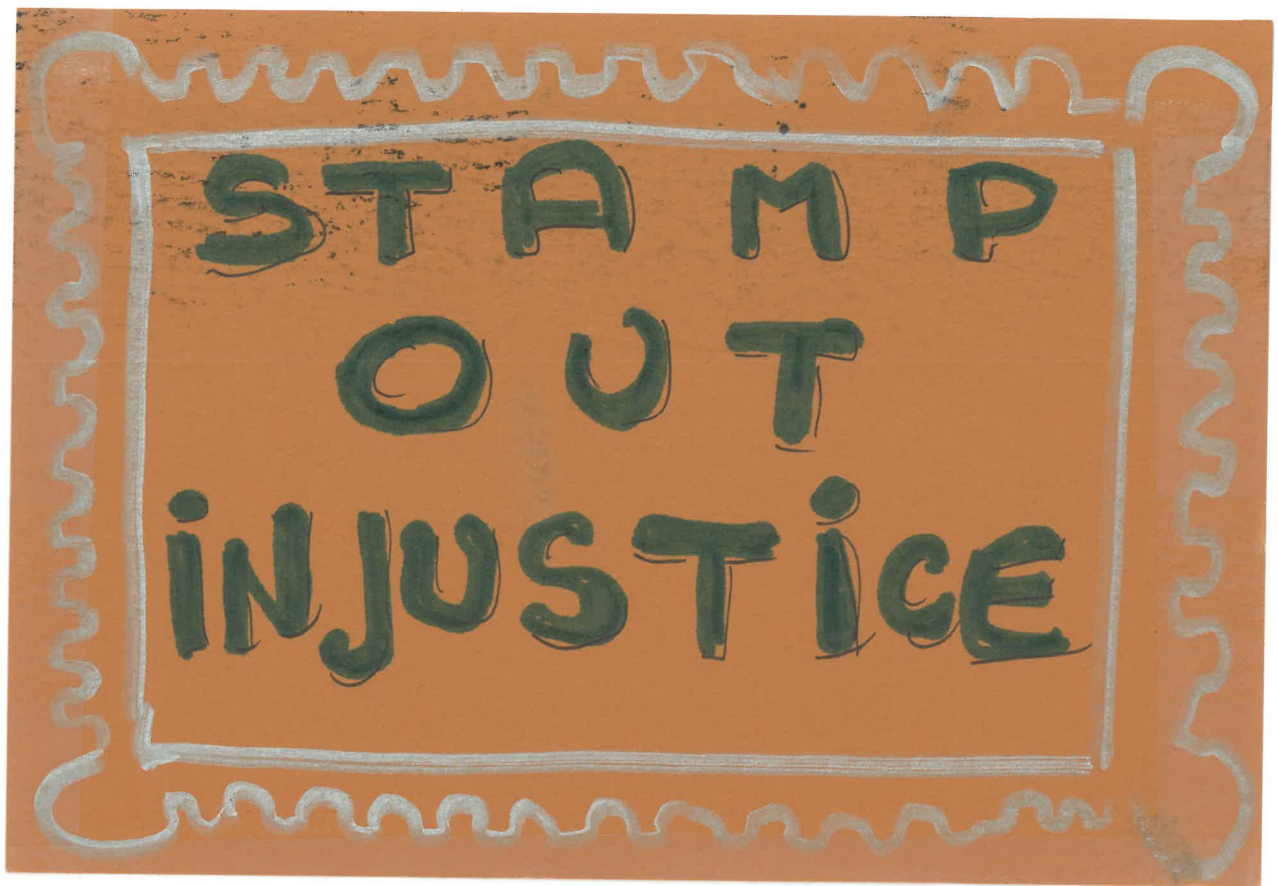
Kathy Beck

Jennifer Huber
310 Shirley Vista
El Sobrante, CA 94585

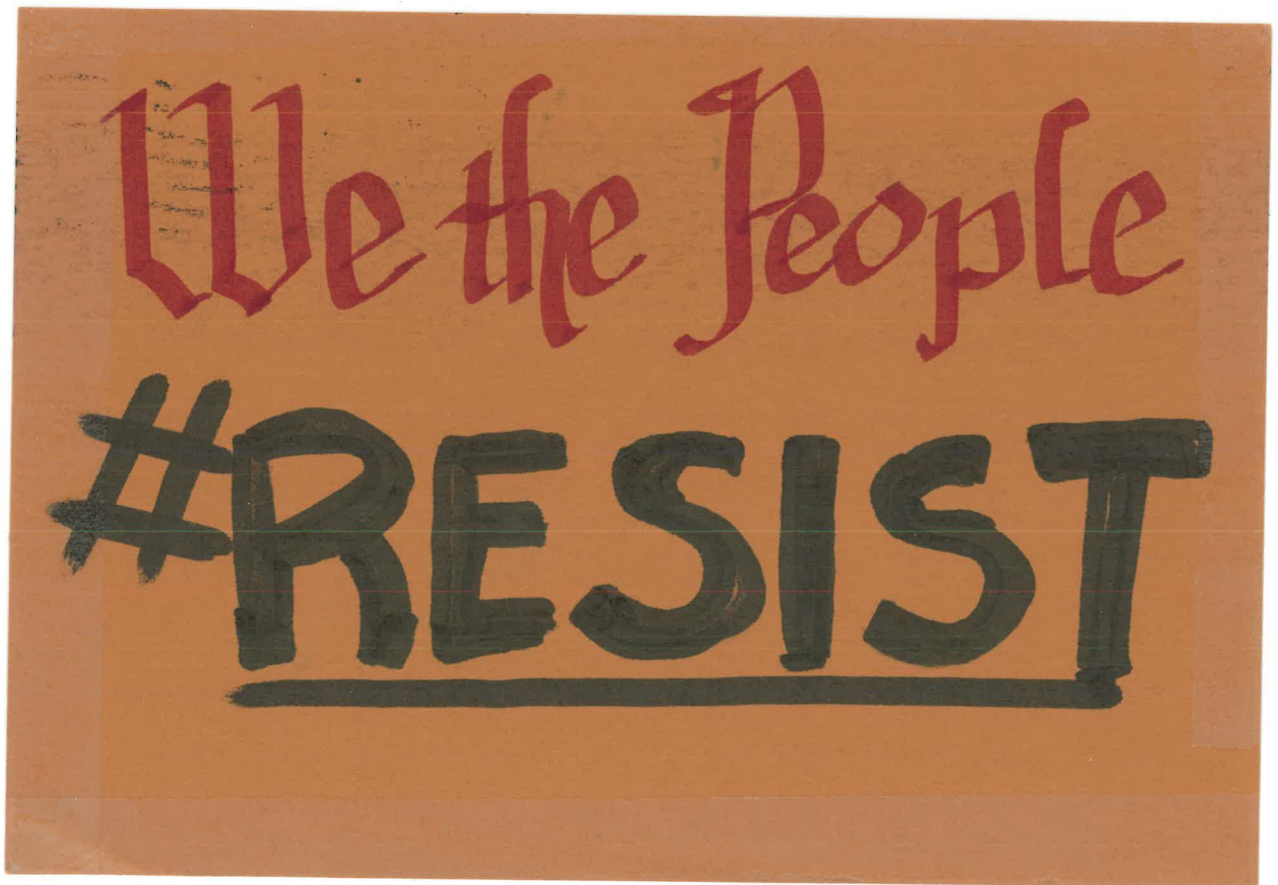


The state is reforming the bail system and 75% of CCC's inmate population are pretrial. It doesn't make sense to invest critical county funds in jail cells now. It isn't "free money." Spend our county funds on prevention, social services, etc. instead.

Board of Supervisors
651 Pine Street
Martinez, CA
94553



1/20/15



**When injustice
becomes Law
resistance
becomes duty**

NO FURTHER INJUSTICE NO JAIL ICE EXPANSION

Information for Speakers:

Deposit this form in the upright box next to the speaker's podium before the Board's consideration of your item.

Wait to be called by the Chair. Please speak into the microphone at the podium.

Begin by stating your name and your city or area of residence, and whether you are speaking for yourself or on behalf of an organization.

If you have handout materials, please give them to the Clerk.

Avoid repeating comments made by previous speakers.

In lieu of speaking, I wish to submit these comments:

~~Instead of spending the enormous~~
~~amount of money on additional~~
~~fire trucks, you need more~~
~~programs to prevent more~~
~~people taking in fire training~~
~~education, housing, not~~
~~more calls.~~

Ruth Herand, Concord