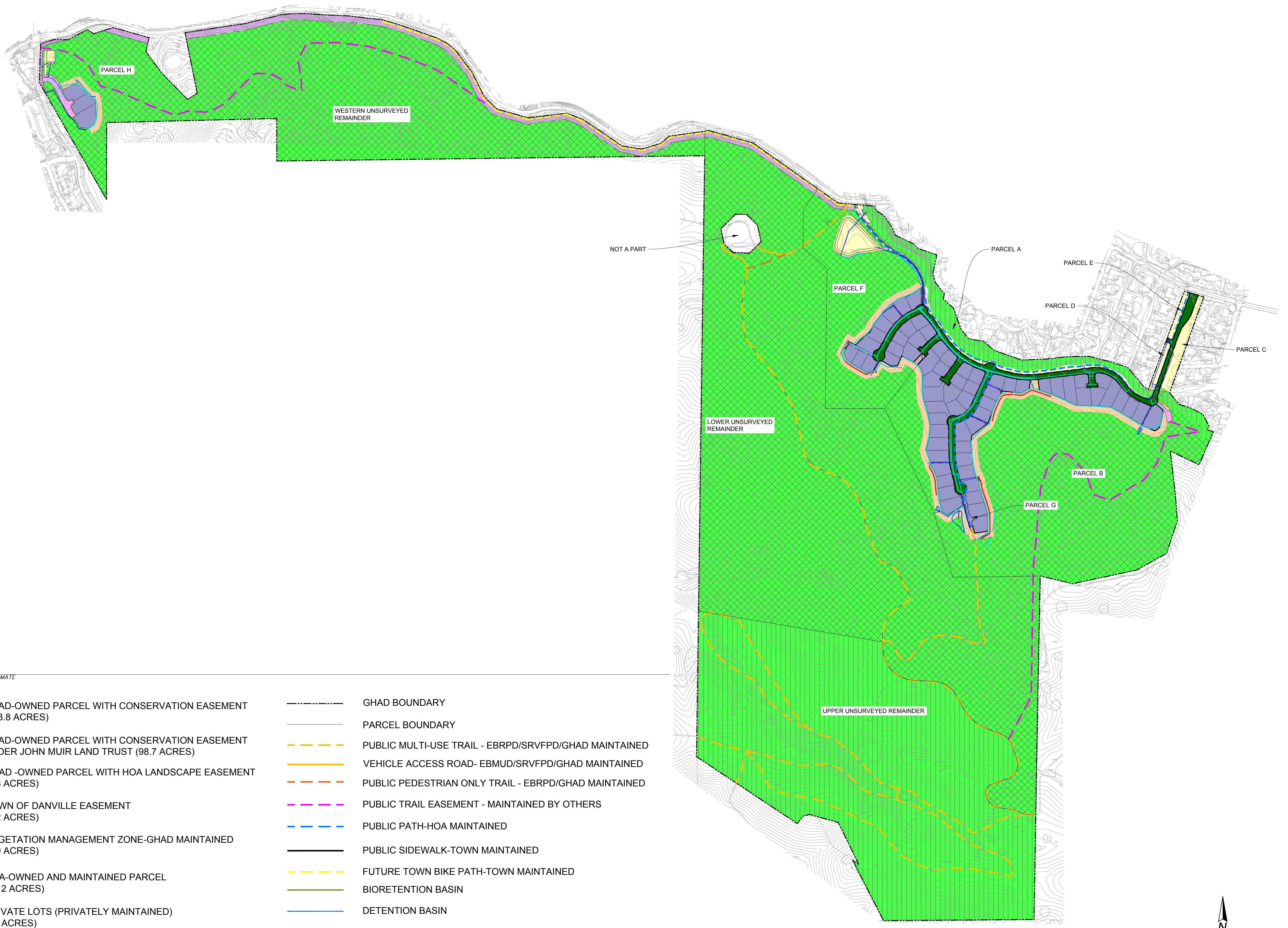




## **APPENDIX A**

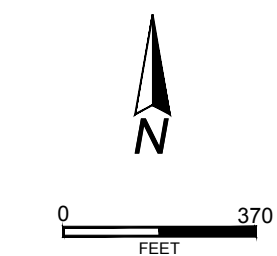
**FIGURE 1: Ownership Exhibit**

**FIGURE 2: Corrective Grading Plan**

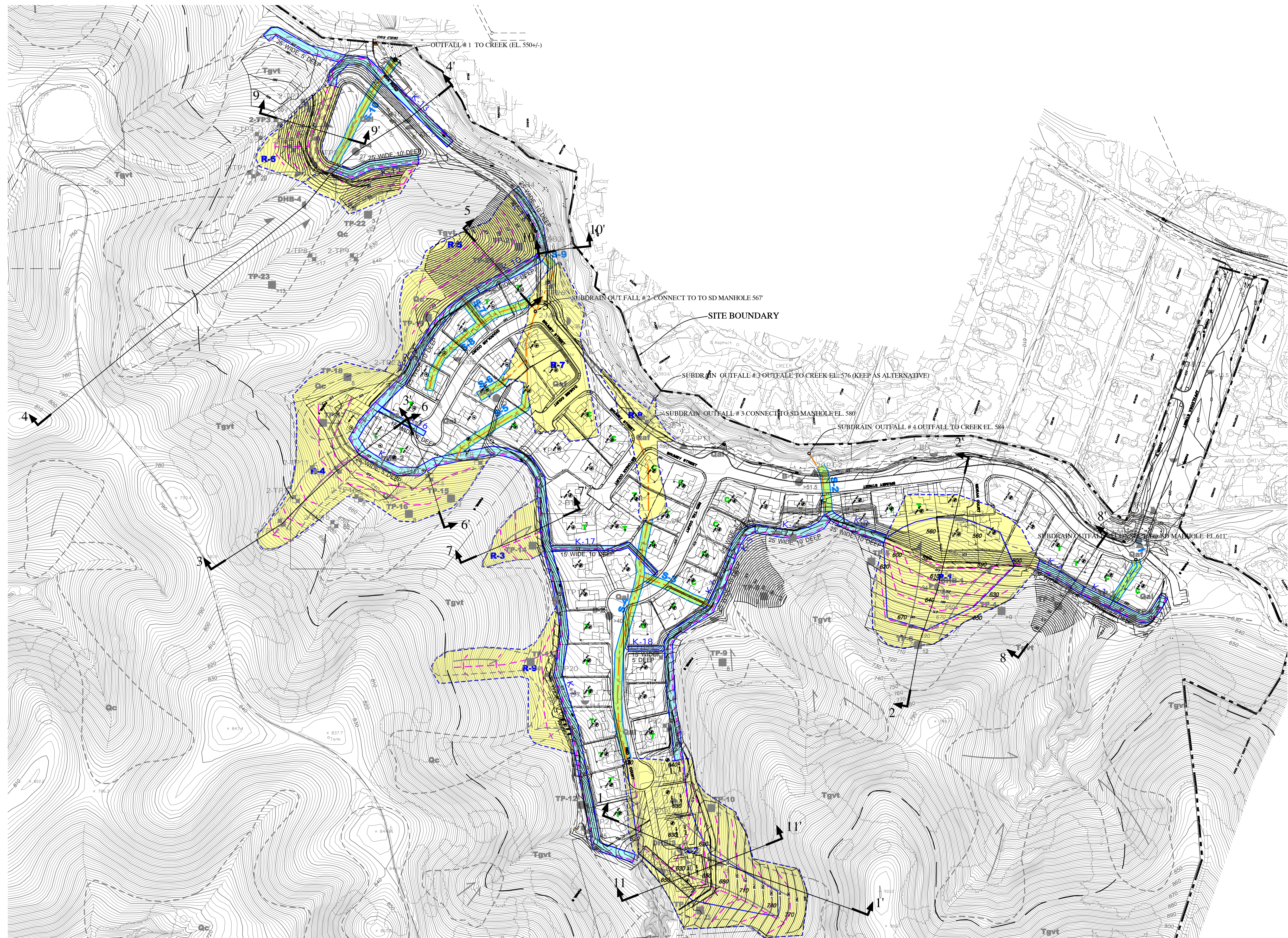
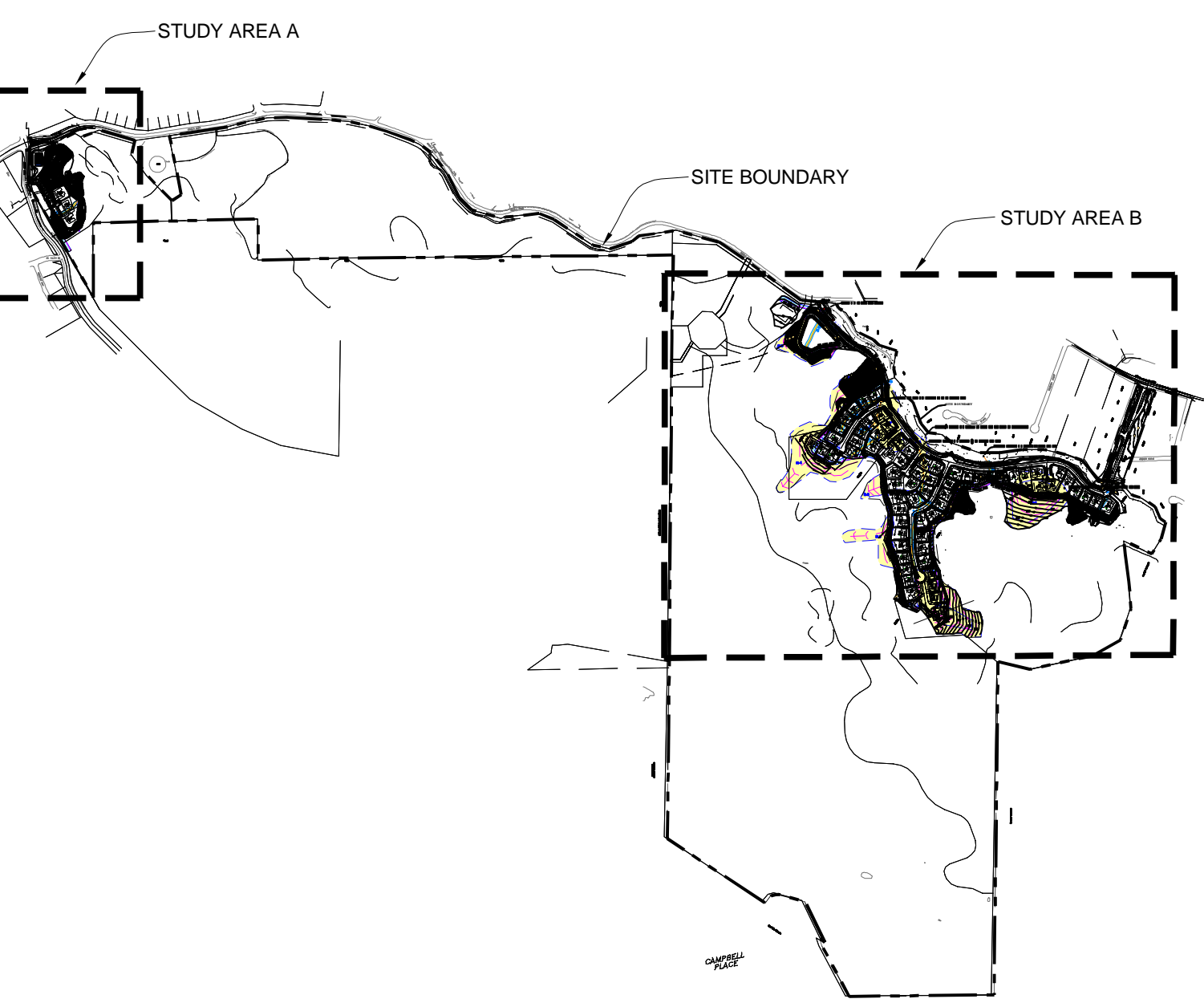


**EXPLANATION**  
ALL LOCATIONS ARE APPROXIMATE

- |  |  |  |   |
|--|--|--|---|
|  | GHAD-OWNED PARCEL WITH CONSERVATION EASEMENT (263.8 ACRES)                           |  | GHAD BOUNDARY   |
|  | GHAD-OWNED PARCEL WITH CONSERVATION EASEMENT UNDER JOHN MUIR LAND TRUST (98.7 ACRES) |  | PARCEL BOUNDARY                                       |
|  | GHAD -OWNED PARCEL WITH HOA LANDSCAPE EASEMENT (5.8 ACRES)                           |  | PUBLIC MULTI-USE TRAIL - EBRPD/SRVFPD/GHAD MAINTAINED |
|  | TOWN OF DANVILLE EASEMENT (6.2 ACRES)  |  | VEHICLE ACCESS ROAD- EBMUD/SRVFPD/GHAD MAINTAINED     |
|  | VEGETATION MANAGEMENT ZONE-GHAD MAINTAINED (7.9 ACRES)                               |  | PUBLIC PEDESTRIAN ONLY TRAIL - EBRPD/GHAD MAINTAINED  |
|  | HOA-OWNED AND MAINTAINED PARCEL (0.12 ACRES)   |  | PUBLIC TRAIL EASEMENT - MAINTAINED BY OTHERS          |
|  | PRIVATE LOTS (PRIVATELY MAINTAINED) (16 ACRES)                                       |  | PUBLIC PATH-HOA MAINTAINED                            |
|  | PUBLIC STREETS (TOWN OF DANVILLE MAINTAINED) (5.7 ACRES)                             |  | PUBLIC SIDEWALK-TOWN MAINTAINED                       |
|  |  |  | FUTURE TOWN BIKE PATH-TOWN MAINTAINED                 |
|  |  |  | BIORETENTION BASIN                                    |
|  |  |  | DETENTION BASIN                                       |
|  |  |  | STORM DRAIN LINES WITHIN OPEN SPACE - GHAD MAINTAINED |
|  |  |  | STORM DRAIN LINES WITHIN DEVELOPMENT-TOWN MAINTAINED  |
|  |  |  | CONCRETE-LINED DRAINAGE DITCH- GHAD-MAINTAINED        |
|  |  |  | RETAINING WALLS- GHAD-MAINTAINED                      |



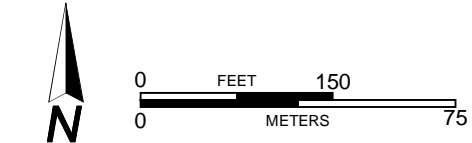
COPYRIGHT © 2019 BY ENGEO INCORPORATED. THIS DOCUMENT MAY NOT BE REPRODUCED IN WHOLE OR IN PART BY ANY MEANS, ELECTRONIC, MECHANICAL, OR BY ANY INFORMATION STORAGE AND RETRIEVAL SYSTEM, WITHOUT THE EXPRESS WRITTEN CONSENT OF ENGEO INCORPORATED. FILE DATE: 01/24/2023 10:41:02 AM. DRAWN BY: HT



**EXPLANATION**

ALL LOCATIONS ARE APPROXIMATE

- |                                     |   |   |   |   |
|-------------------------------------|---|---|---|---|
| <b>Qaf</b> FILL (UNDOCUMENTED)      | EARTHFLOW - SURFICIAL LANDSLIDE           | <b>2-B13</b> AUGER BORING (ENGO, 2013)      | <b>TP-21</b> TEST PIT (ENGO, 2008)  | PROPOSED REMOVAL AREA                   |
| <b>Qc</b> COLLUVIUM                 | DEEP - SEATED LANDSLIDE                   | <b>B-4</b> AUGER BORING (ENGO, 2008)        | <b>2CPT-4</b> CONE PENETRATION TEST (ENGO, 2013)                          | <b>638</b> ELEVATION OF REMOVAL IN FEET |
| <b>Qal</b> ALLUVIUM                 | AREA OF SIGNIFICANT RECENT CREEK INCISION | <b>2-DC6</b> CORED BORING (ENGO, 2013)      | <b>K-18</b> PROPOSED KEYWAY, SHOWING WIDTH AND DEPTH<br>15' WIDE, 5' DEEP | <b>C</b> CUT LOT                        |
| <b>Qoal</b> OLDER ALLUVIUM          | GEOLOGIC CROSS SECTION LOCATION           | <b>2-MR3</b> MUD-ROTARY BORING (ENGO, 2013) | PROPOSED SUBDRAIN   | <b>T</b> TRANSITION LOT                 |
| <b>Tgvt</b> TASSAJARA GROUP BEDROCK | STRIKE AND DIP OF BEDDING-INCLINED        | <b>DHB-4</b> DOWNHOLE BORING (ENGO, 2008)   | <b>S-6</b> PROPOSED SWALE CLEANOUT  |   |
| GEOLOGIC CONTACT                    | STRIKE AND DIP OF BEDDING-SHEAR PLANE     | <b>2-TP9</b> TEST PIT (ENGO, 2013)          | <b>S-11</b> PROPOSED SWALE CLEANOUT WITH SUBDRAIN                         |   |



**CORRECTIVE GRADING PLAN**  
MAGEE RANCH  
DANVILLE, CALIFORNIA

PROJECT NO: 8889.200.000  
SCALE: AS SHOWN  
DRAWN BY: GLJ  
CHECKED BY: RS

COPYRIGHT © 2017 BY ENGO INCORPORATED. THIS DOCUMENT MAY NOT BE REPRODUCED IN WHOLE OR IN PART BY ANY MEANS WHATSOEVER, NOR MAY IT BE QUOTED OR INCORPORATED WITHOUT THE EXPRESS WRITTEN CONSENT OF ENGO INCORPORATED.