



# CCC-DCSS- Phase 1

Location: 50 Douglas Road, Suite 100, Martinez, CA

Project Number: 23\_002.b

Designer: Brandy Wilson

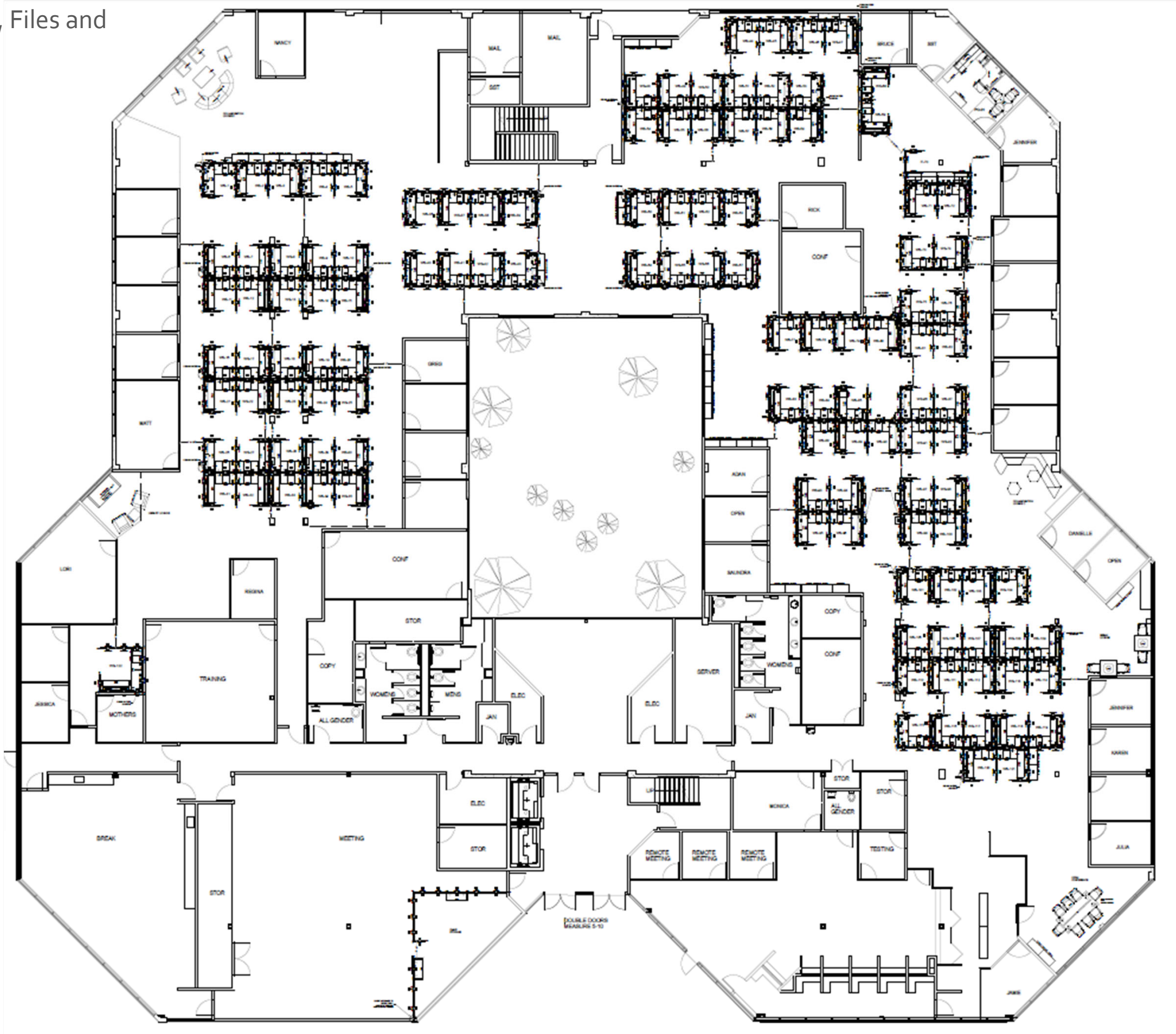
Account Rep: Dan Peters

Account Rep Email: [dan@samclar.com](mailto:dan@samclar.com)

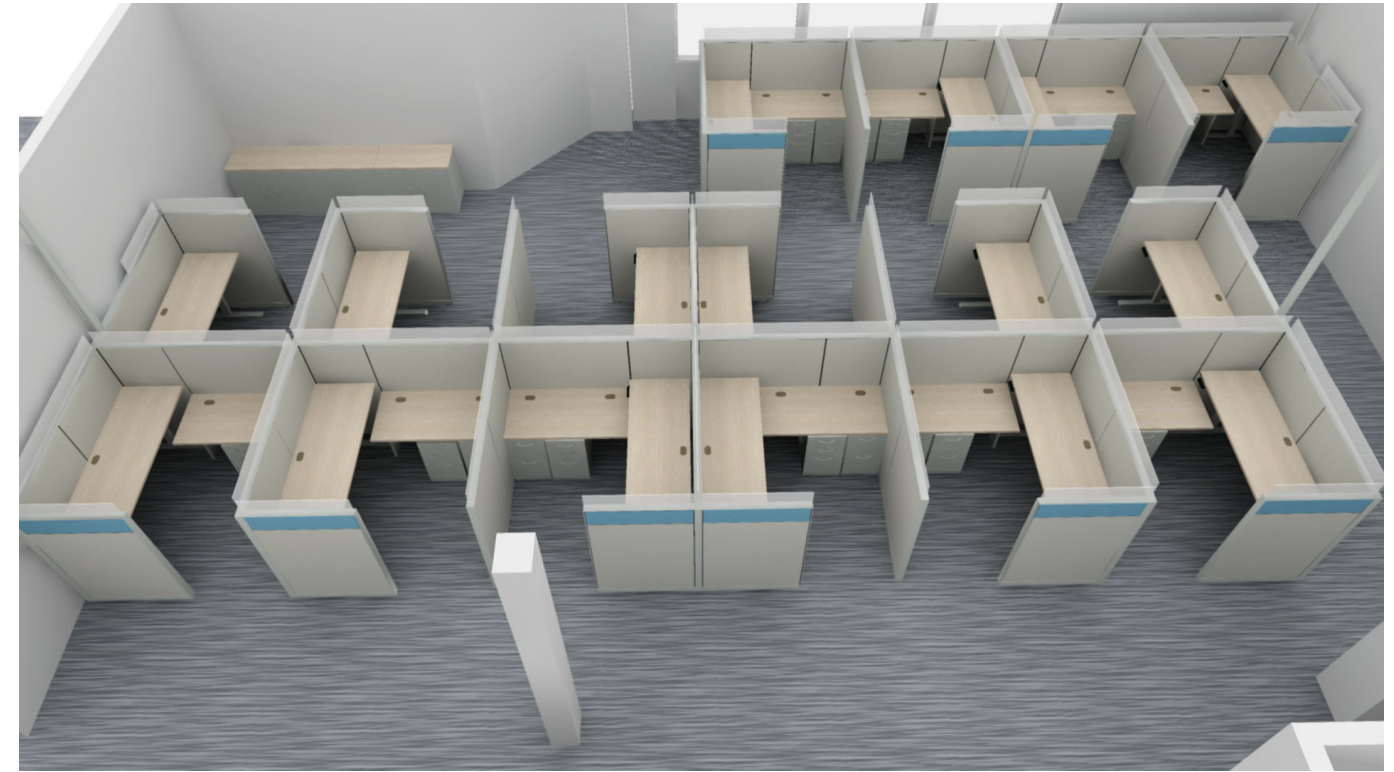
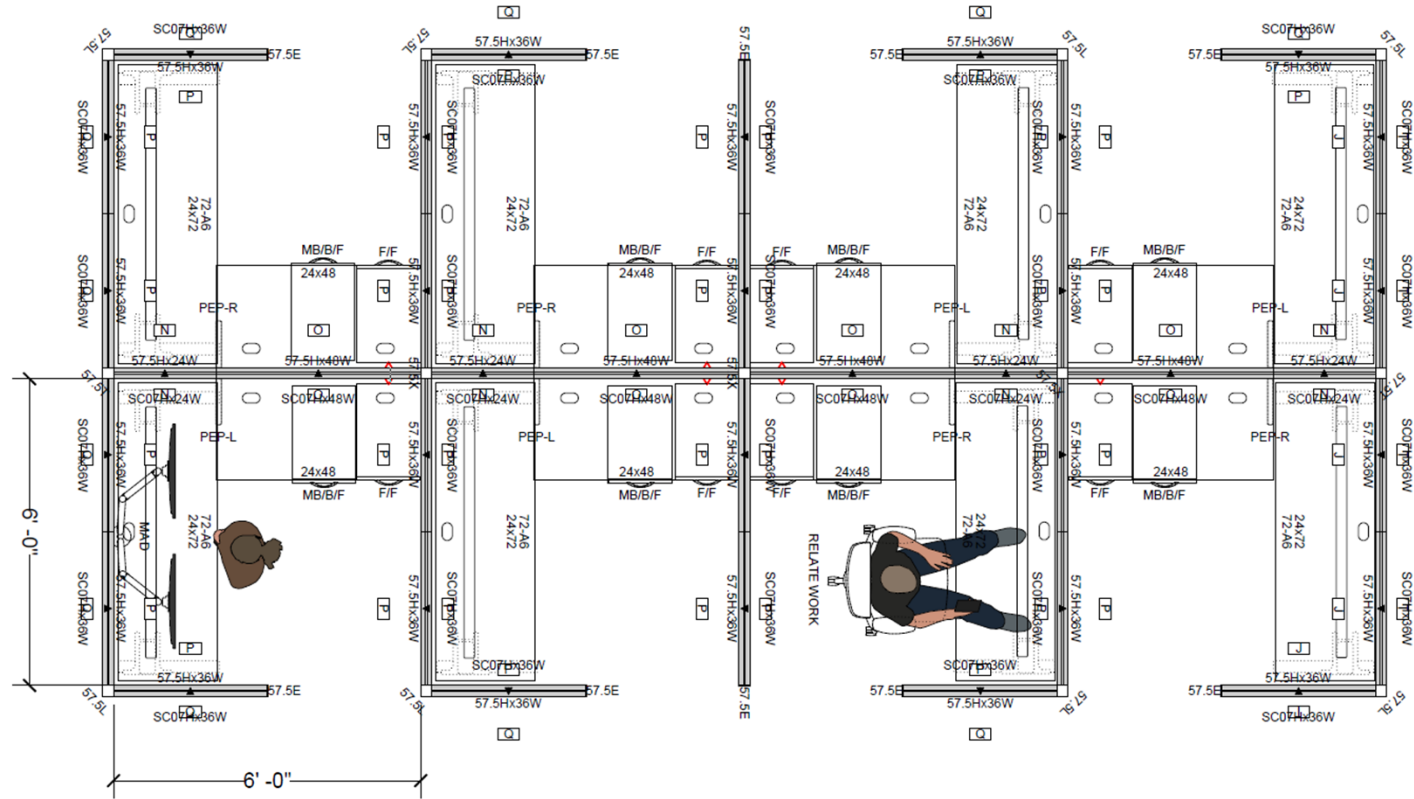
Date: 05-02-2023

# OVERALL PLAN

Phase 1 is Workstations, Files and Private Office 01



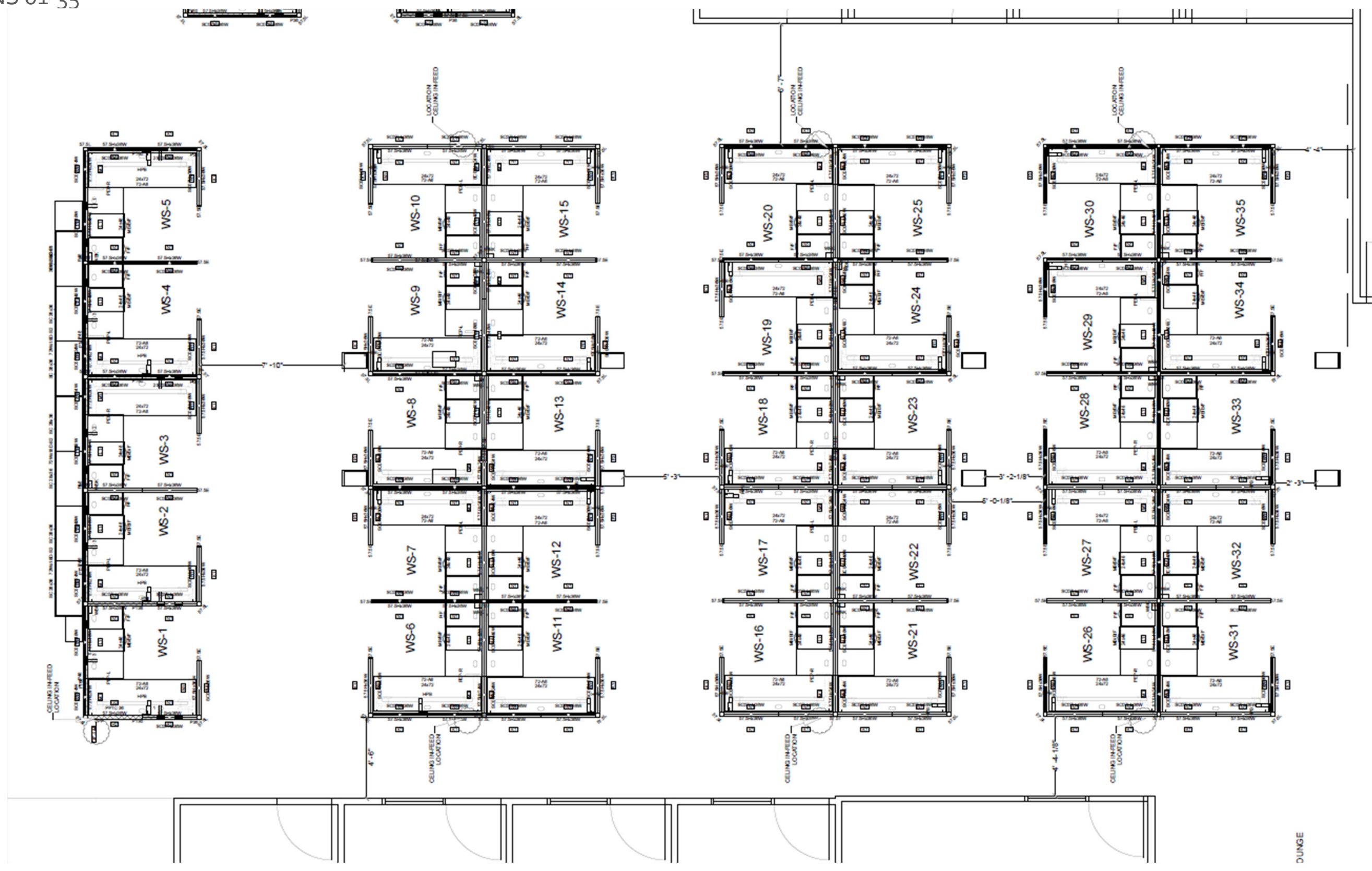
# Workstation Typical



1. 57.5”H Fabric Panels with 7.5”H Frame-less Glass (frosted)- Total Height = 65”H
2. 24”D x 72”W Laminate Height-Adjustable Table with Metal Base; Memory Control Pad
3. 24”D x 48”W Laminate Stationary Return Surface
4. Supporting File/ File Pedestal
5. Mobile Box/Box/ File Pedestal

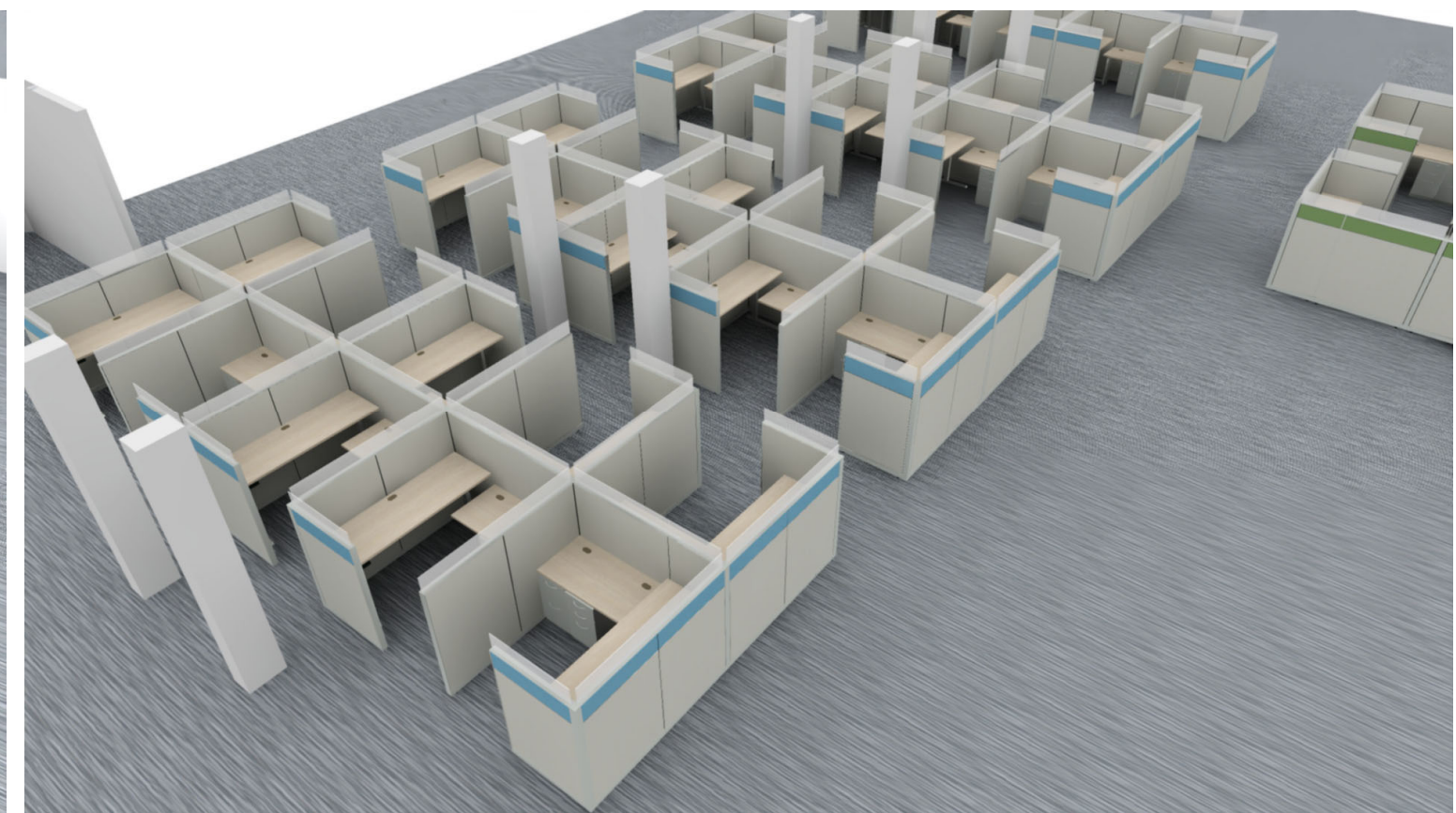
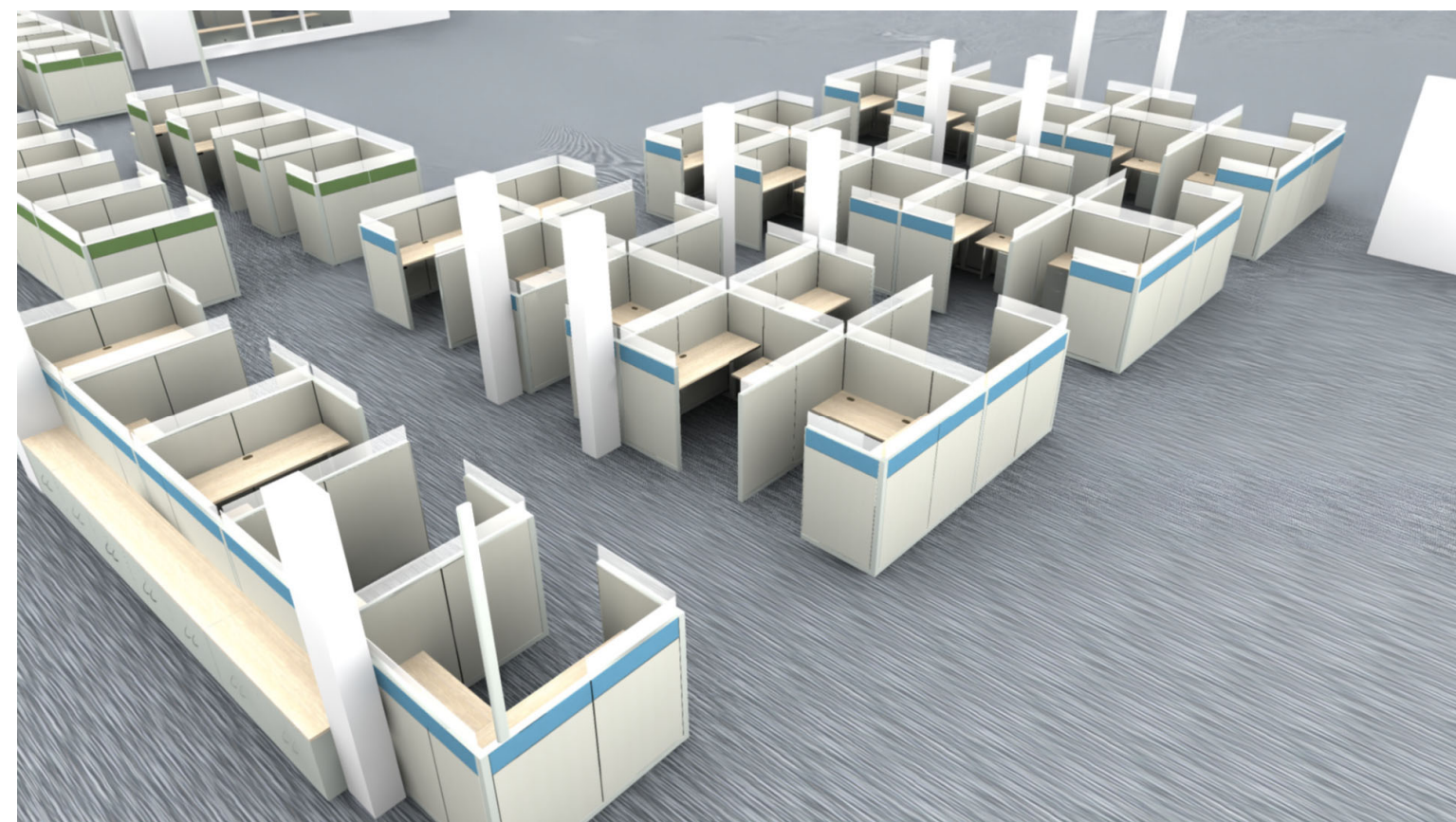
# OVERALL PLAN

STATIONS 01-35



# 3D

STATIONS 01-35



All Accent Tiles for WS 01-35 are Binary/ Lagoon

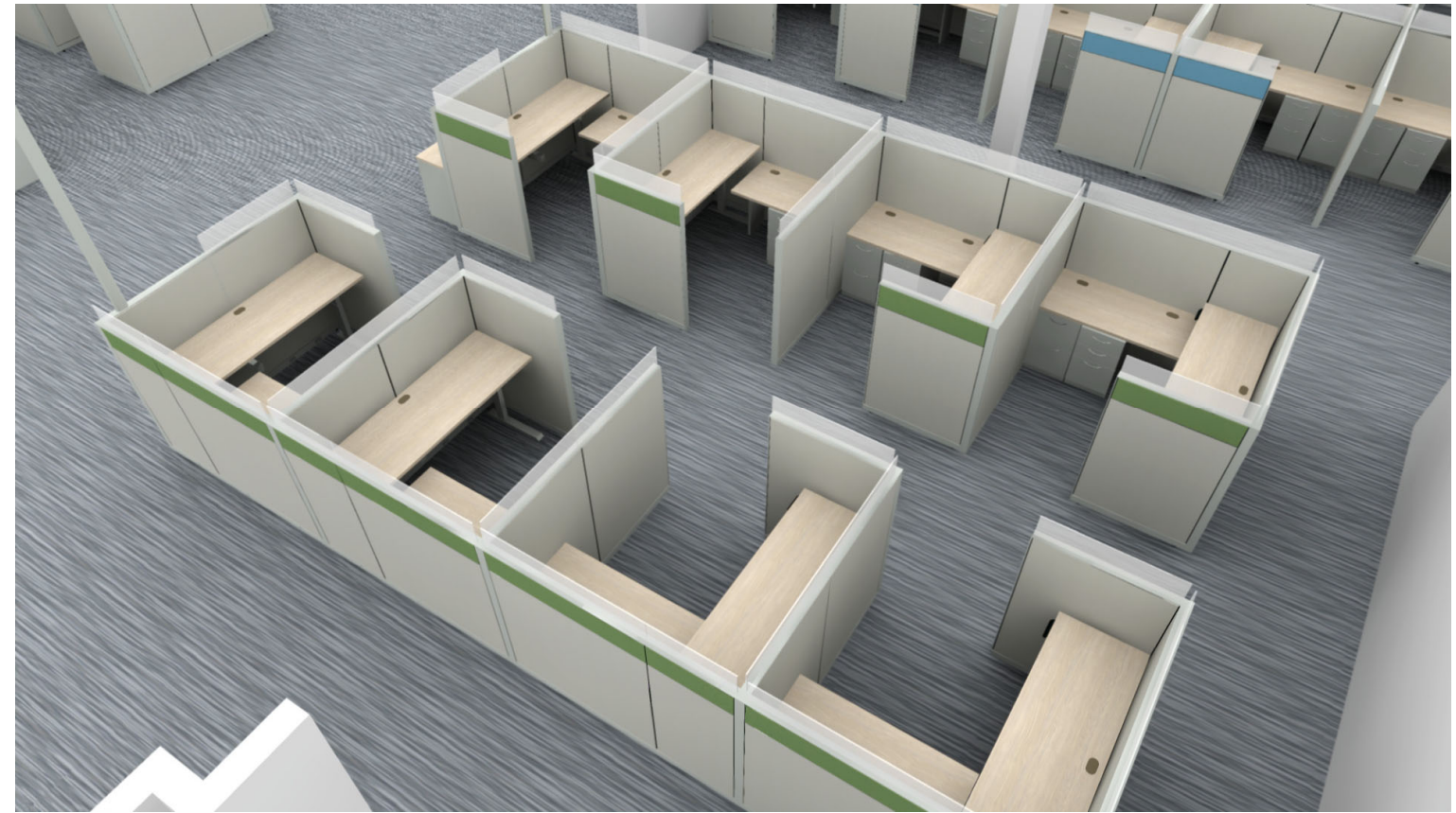
# OVERALL PLAN

STATIONS 36-43 & 60-67



# 3D

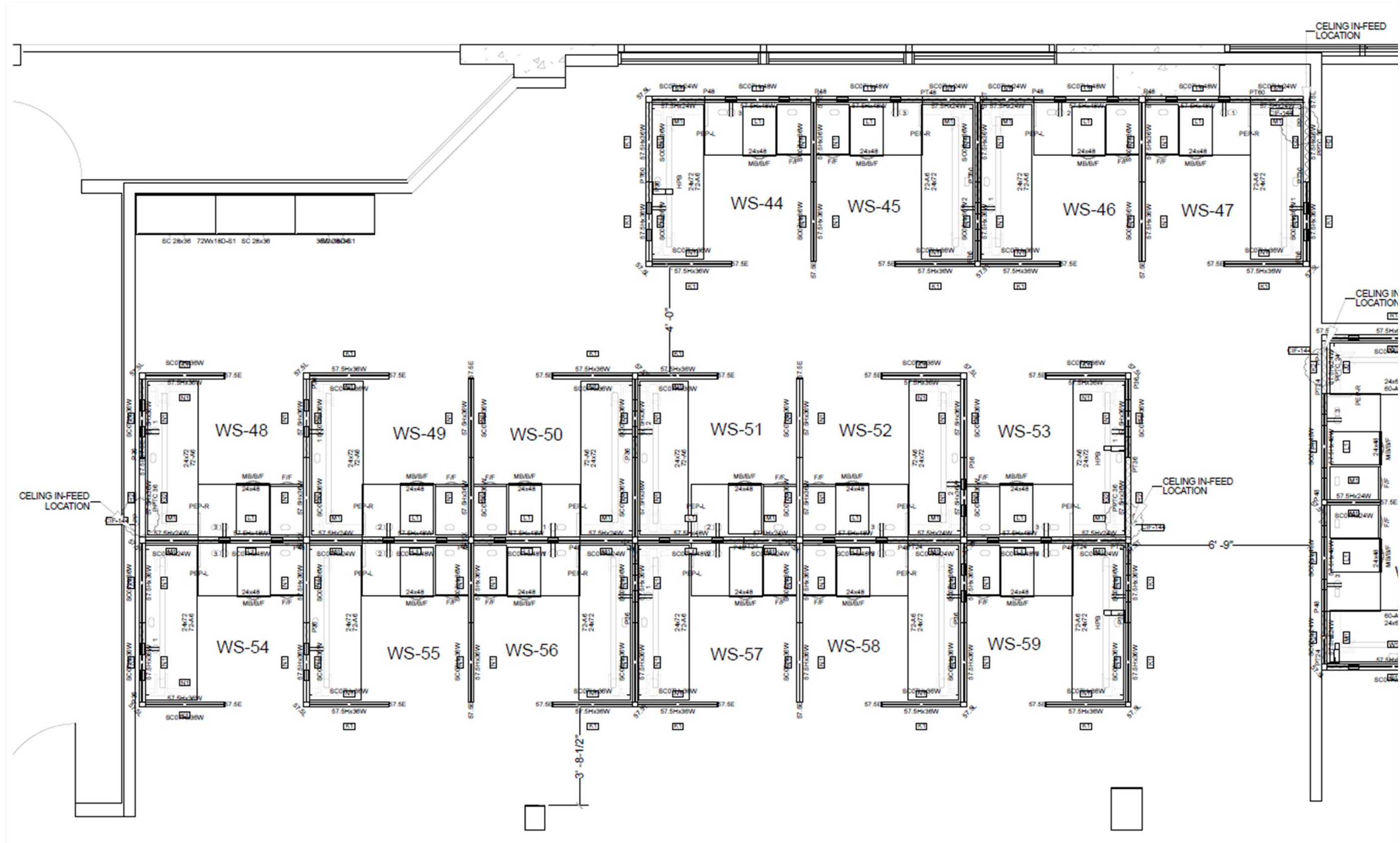
STATIONS 36-43 & 60-67



All Accent Tiles for WS 36-43 & 60-67 are Binary/ Juniper

# OVERALL PLAN

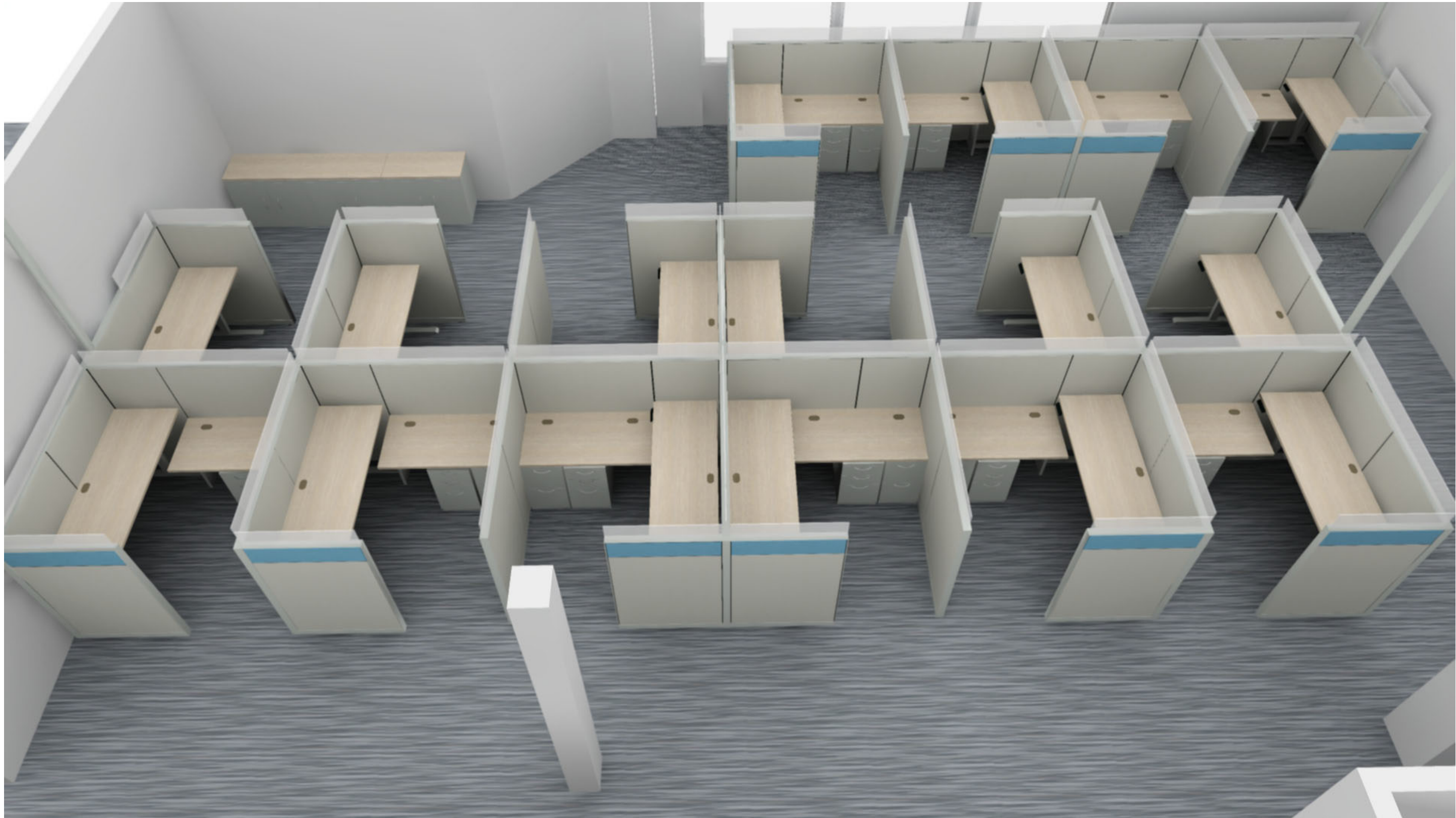
STATIONS 44-59





# 3D

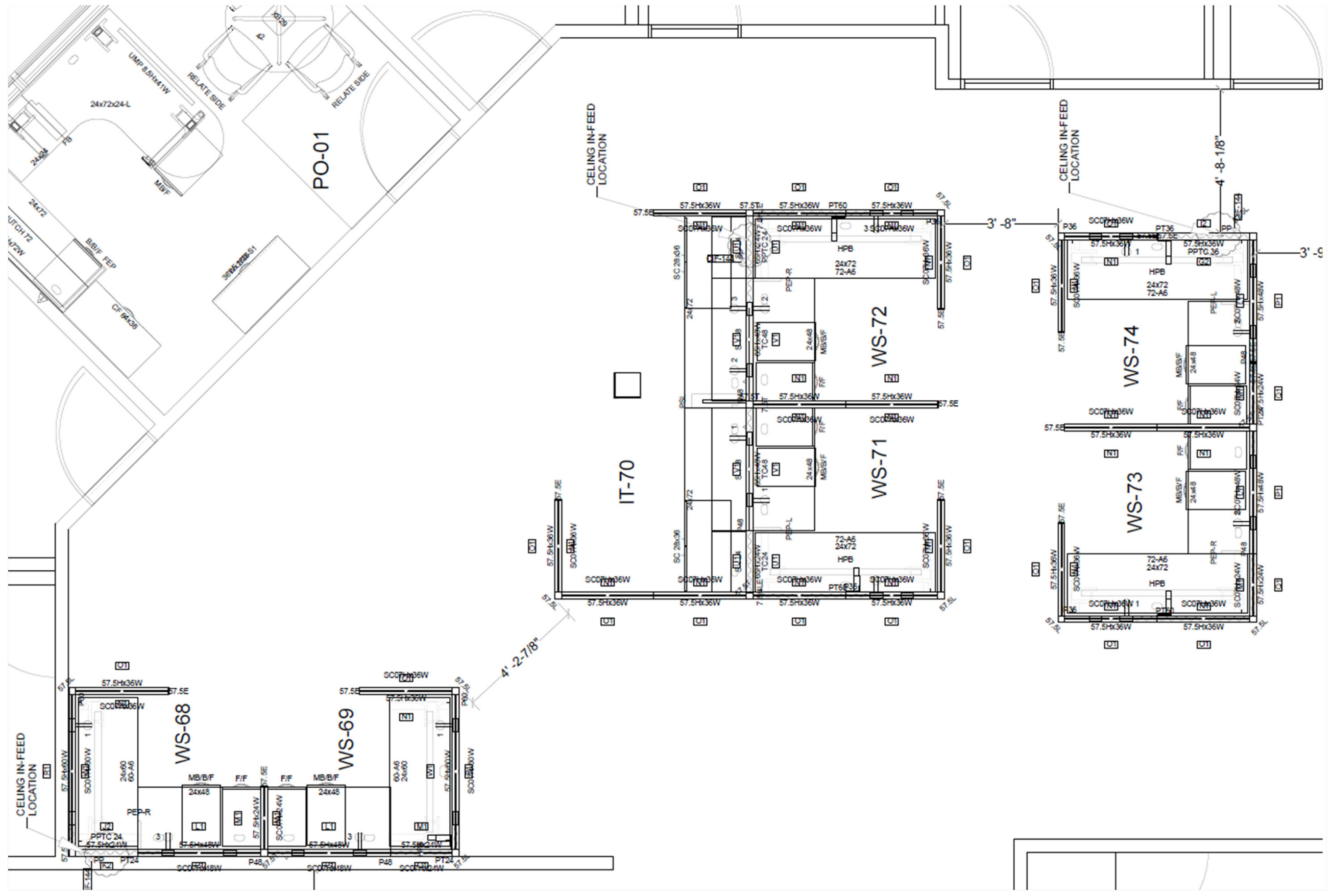
STATIONS 44-59



All Accent Tiles for WS 44-59 are Binary/ Lagoon

# OVERALL PLAN

STATIONS 68-74



# 3D

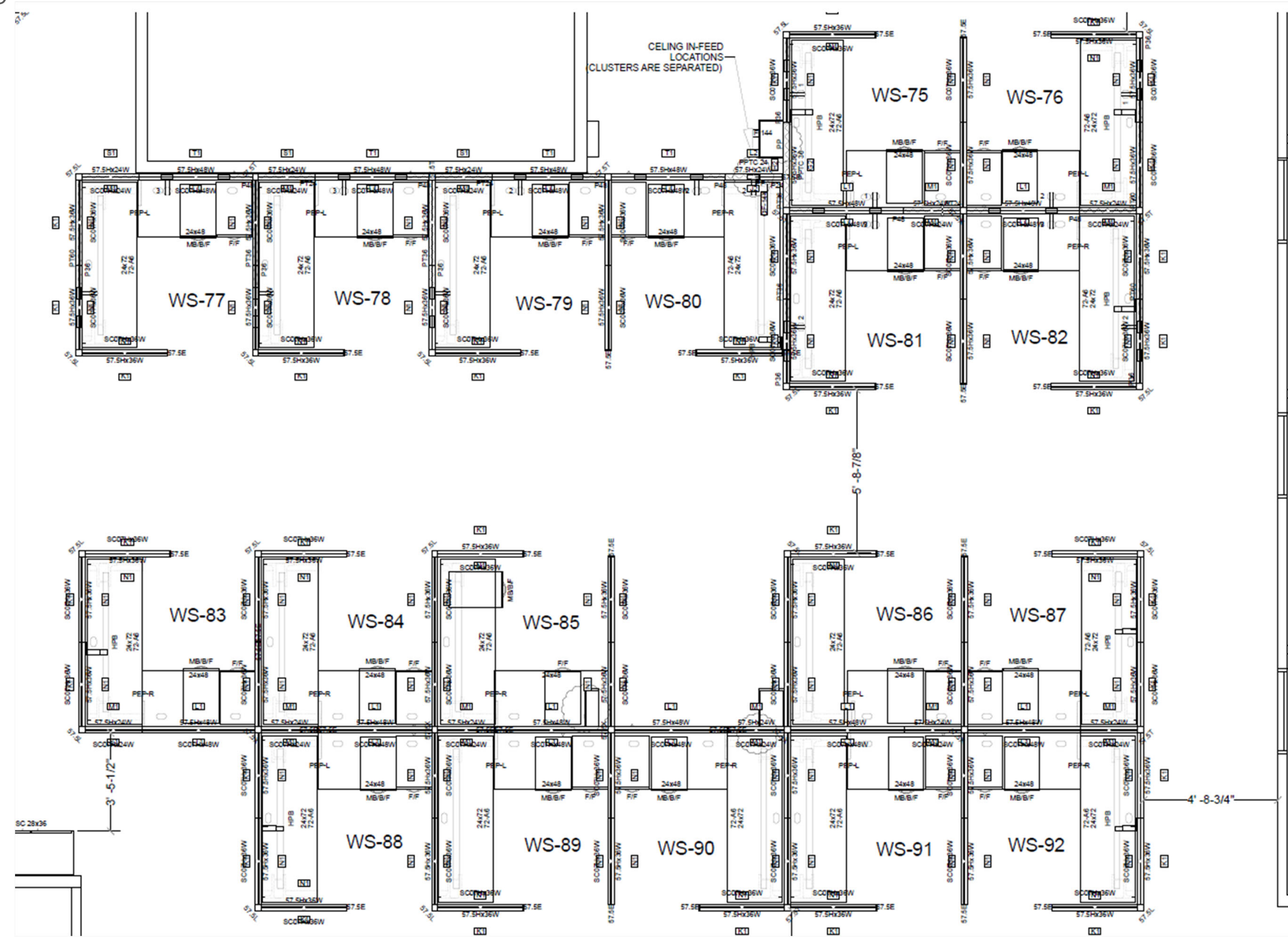
STATIONS 68-74



All Accent Tiles for WS 68-74 are Binary/ Juniper

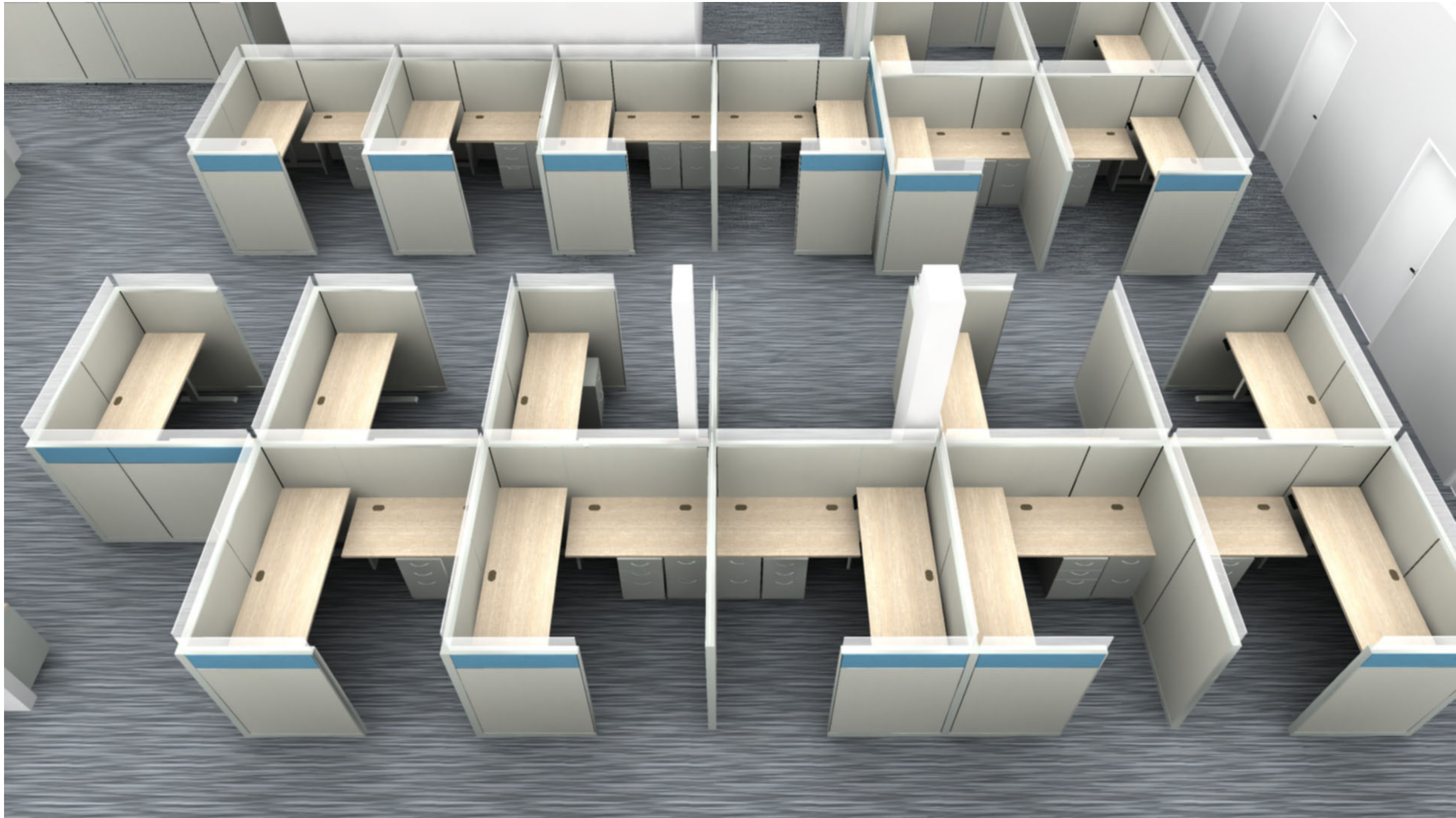
# OVERALL PLAN

STATIONS 75-92



# 3D

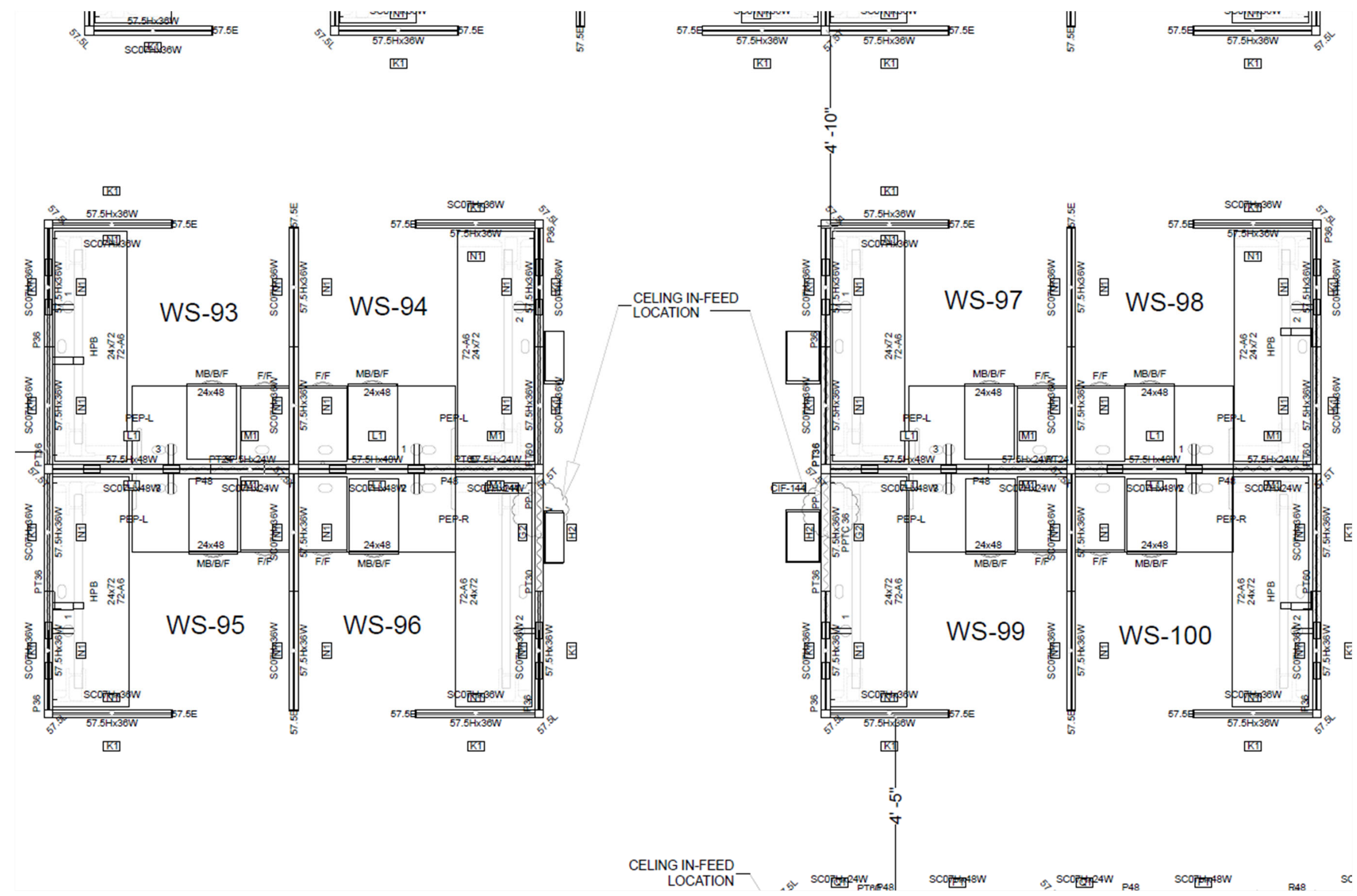
STATIONS 75-92



All Accent Tiles for WS 75-92 are Binary/ Lagoon

# OVERALL PLAN

## STATIONS 93-100



# 3D

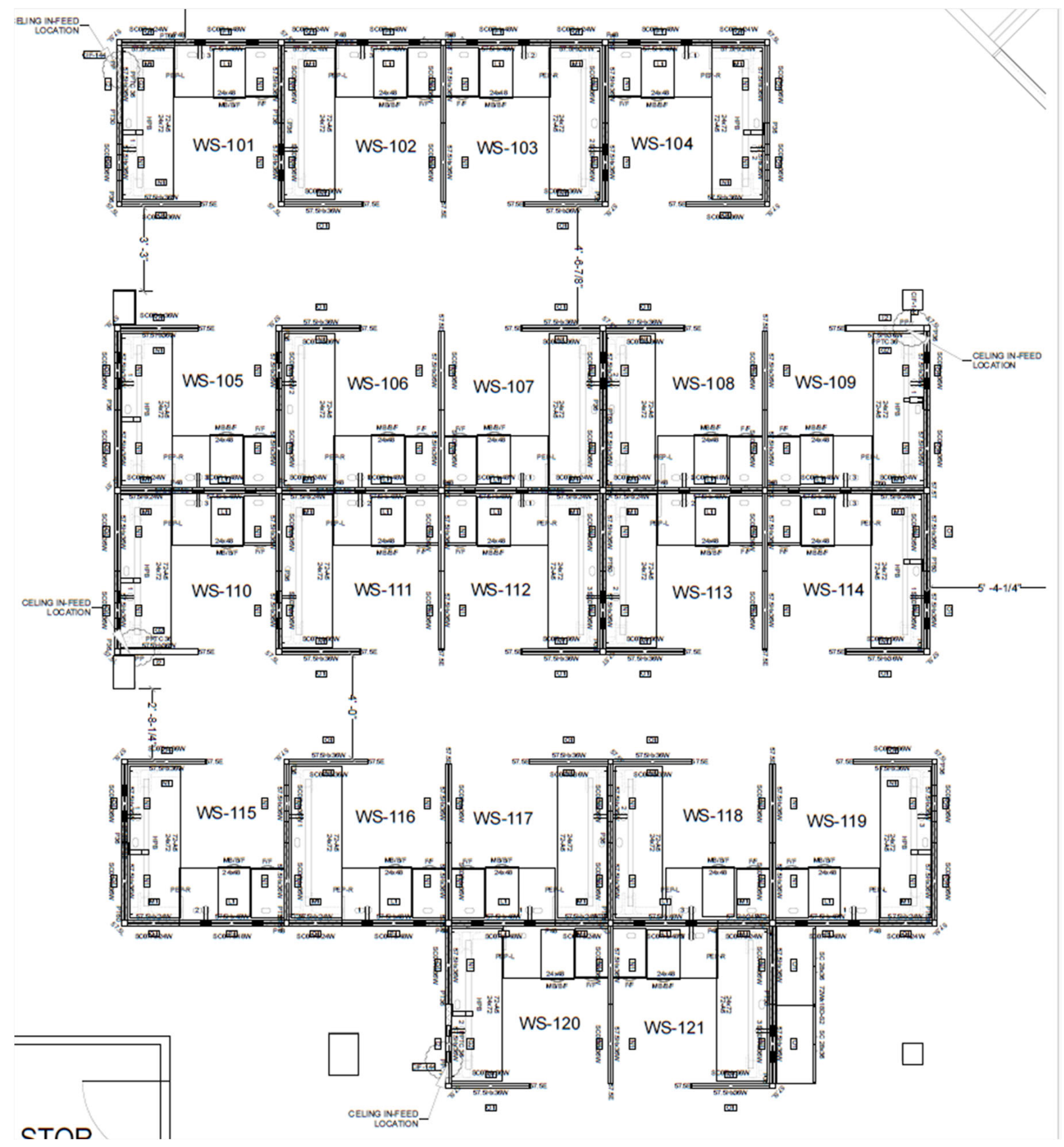
STATIONS 93-100



All Accent Tiles for WS 93-100 are Binary/ Lagoon

# OVERALL PLAN

STATIONS 101-121





# 3D

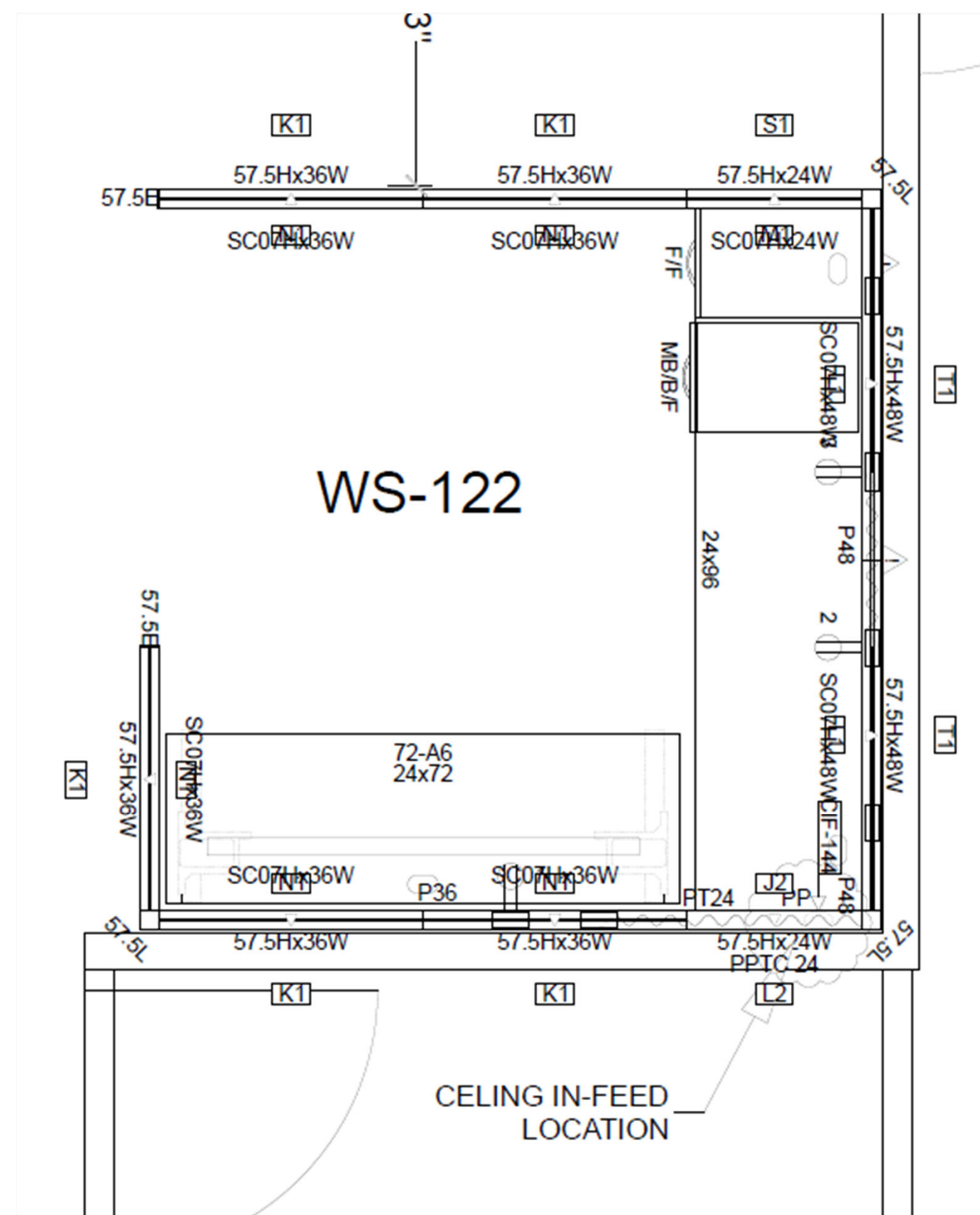
STATIONS 101-121



All Accent Tiles for WS 101-121 are Binary/ Juniper

# OVERALL PLAN

STATION 122



# 3D

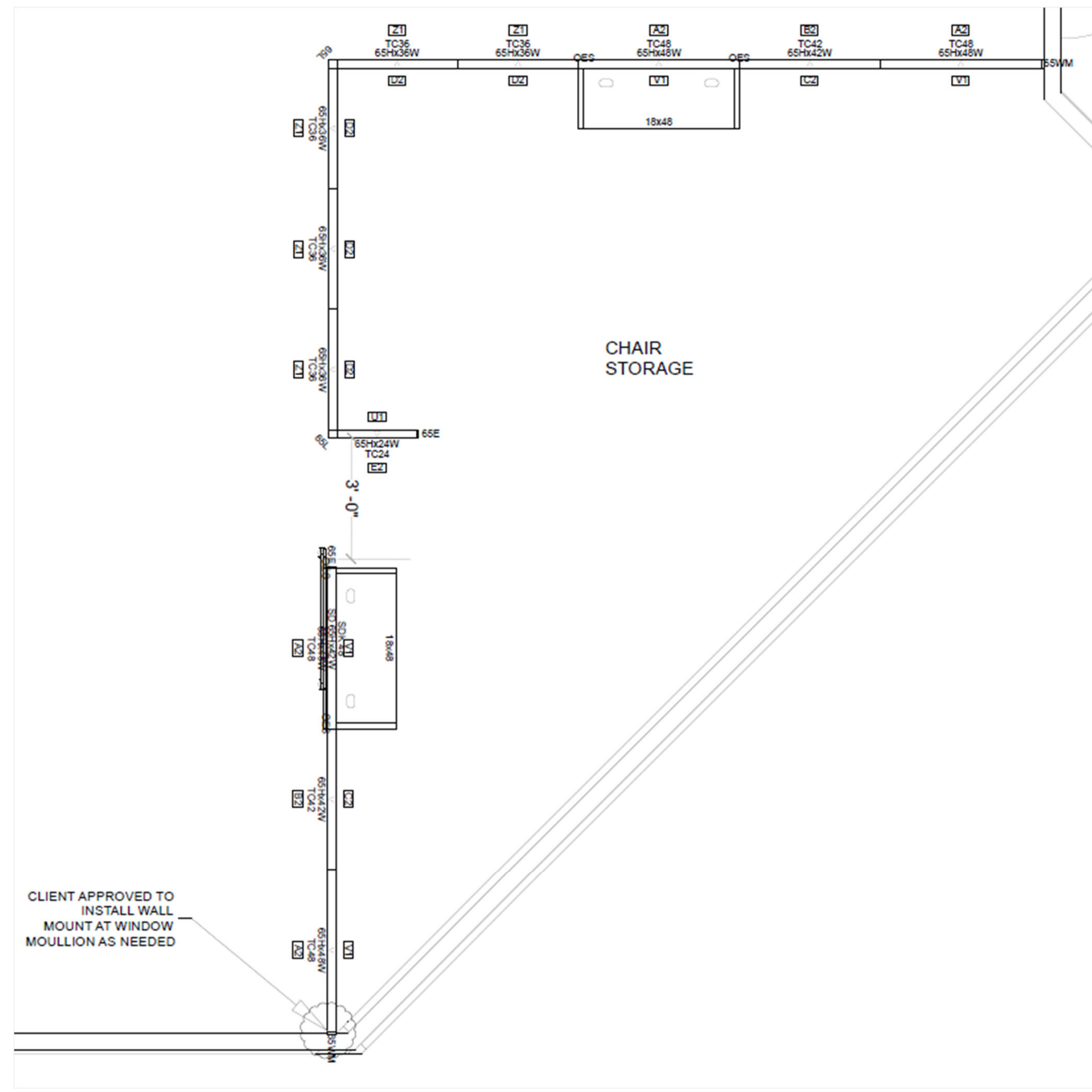
STATION 122



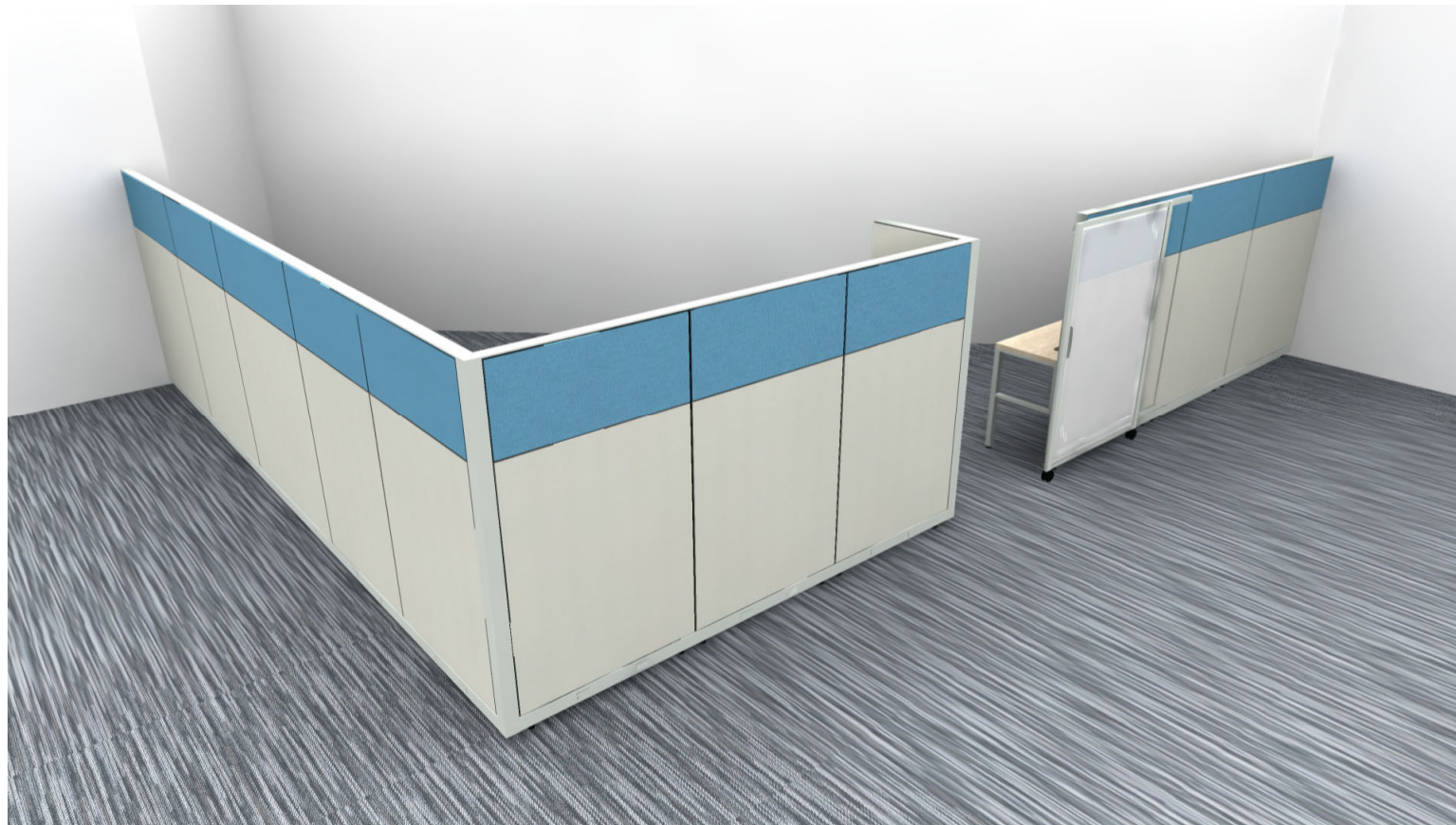
All Accent Tiles for WS 122 are Binary/ Lagoon

# OVERALL PLAN

## CHAIR STORAGE



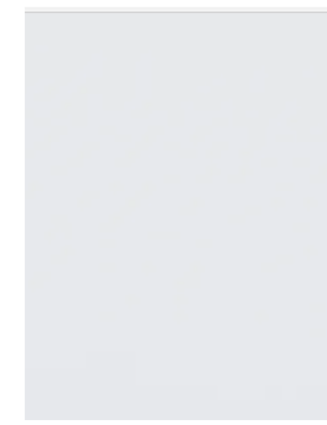
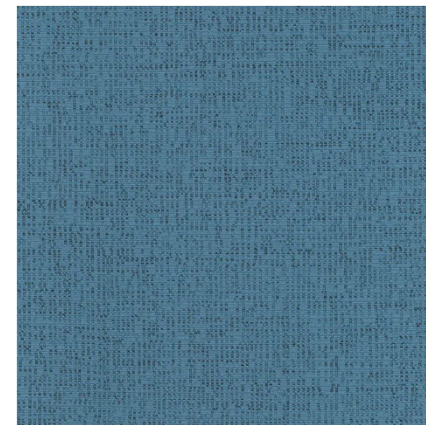
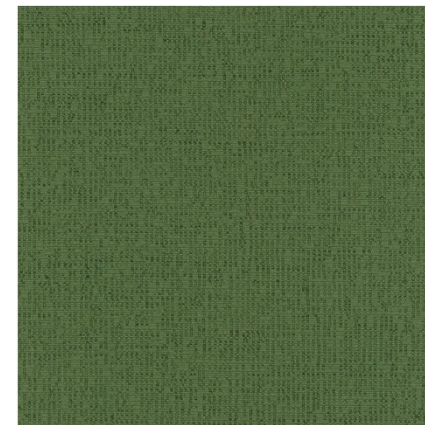
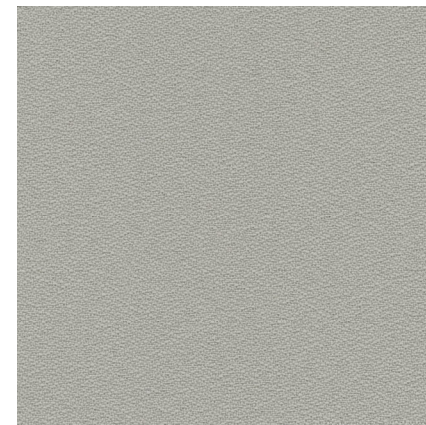
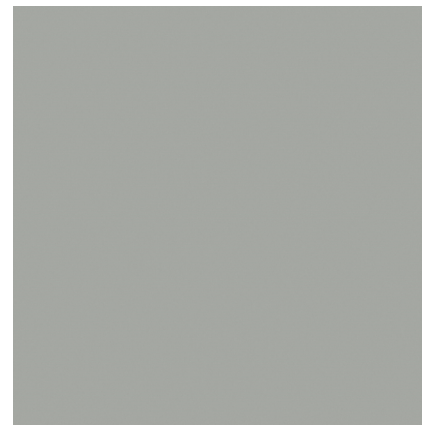
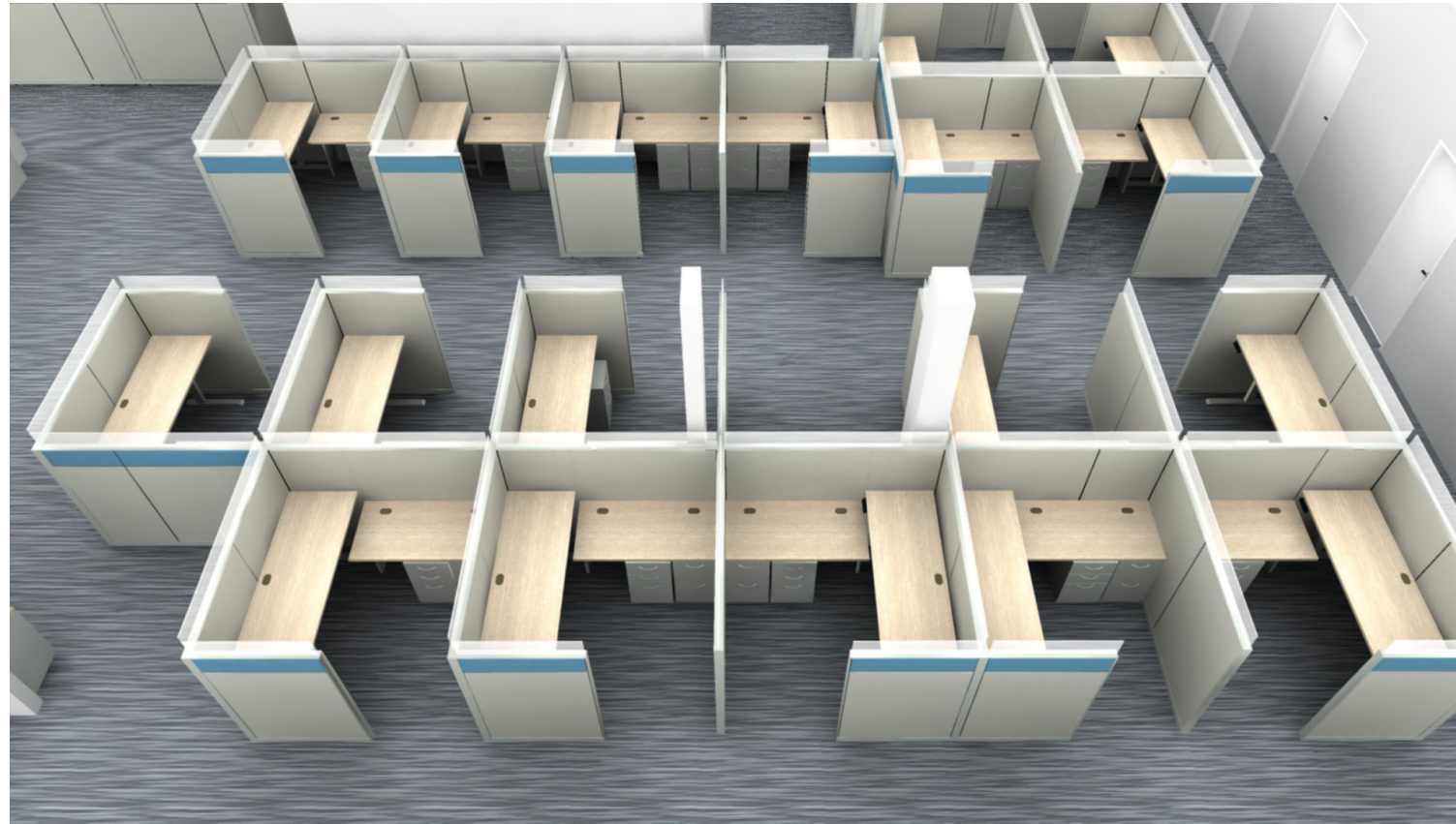
# 3D CHAIR STORAGE



All Accent Tiles for Chair Storage are Binary/ Lagoon

# FINISHES

## Workstations



**Worksurface Laminate/  
Edge**  
*Kingswood Walnut*

**Panel Trim, Supports,  
Storage Paint**  
*Pebble*

**Main Panel Fabric**  
*Centurion/ Fog*

**Accent Panel Fabric (where  
shown)**  
*Binary/ Juniper*

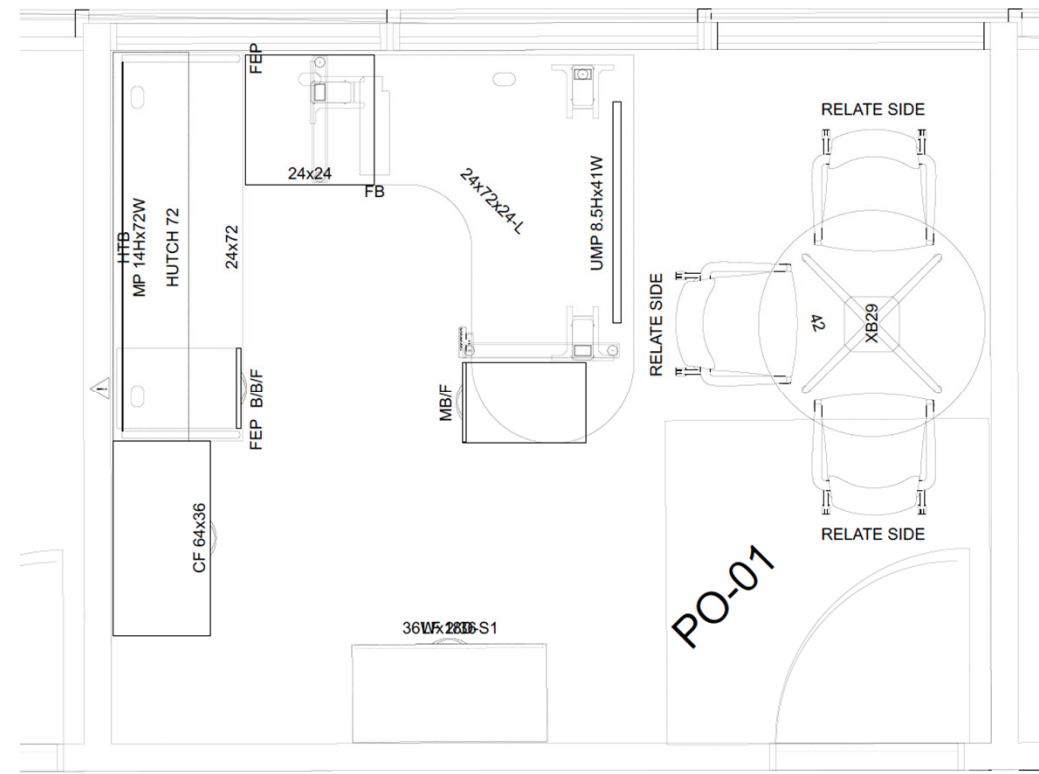
**Accent Panel (where  
shown)**  
*Binary/ Lagoon*

**Frameless Glass**  
*Frosted*

**Duplex Paint**  
*Flint*

# PO-01

## Allsteel Terrace Freestanding



### Product Description:

1. 48"D x 72"W x 24"D x 30"D Height-Adjustable Jetty Surface with connecting 24"D x 24"W bridge surface; 8.5"H Metal Modesty Panel (1 qty)
2. Workrite Height-Adjustable Base (1 qty)
3. 24"D x 72"W Stationary Credenza surface (1 qty)
4. Mobile Box/ File Pedestal Silver Arch Pulls (1 qty)
5. Box/Box/File Pedestal; Silver Arch Pulls (1 qty)
6. 18"D x 36"W 2-Drawer Lateral File with Laminate top; Silver Arch Pulls (1 qty)
7. 72"W surface-mounted Hutch with flipper doors, fabric tack board & task light; Arch Pulls (1 qty)
8. 18"D x 30"W x 64"H Combo Unit with Open Shelving; Arch Pulls
9. Relate Guest Chair with Mesh Back, Arms and Casters (1 qty)

## Sample Images



# FINISHES

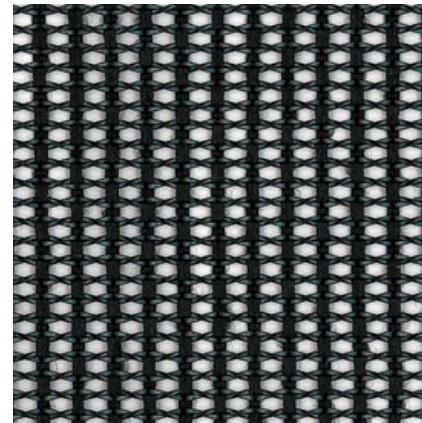
PO-01



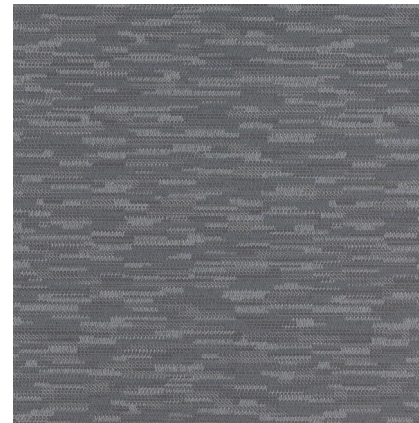
**Desktop/Table top & Base/  
Maverick Cabinets**  
*Kingswood Walnut LTK1*



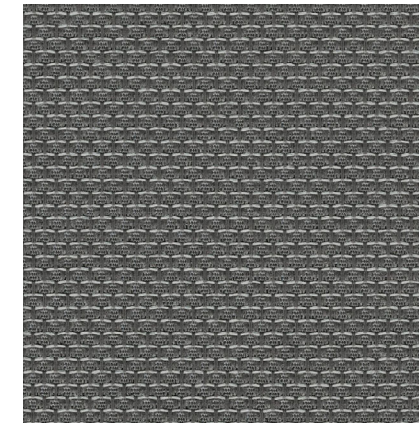
**Metal Supports & Storage**  
*Pebble P8R*



**Chair Mesh**  
*Carbon LMKo1*



**Relate Guest Chair Seat  
Fabric**  
*Ensemble/ Stone  
ENSB4o*



**Tackboard Fabric**  
*Reflections/ Pewter  
REFg22*



By signing this document, you agree to give Sam Clar Office Furniture permission to proceed with the order process. While doing so, please keep in mind that the images are for illustrative purposes and are not meant to definitively portray how the furniture will be configured or appear once installed. Fabrics and finishes will vary by monitor and printer from actual color and are for reference only. Your signature below indicates approval of this document in it's entirety.

Thank you.

Signature of Approval: \_\_\_\_\_

Date: \_\_\_\_\_

