

PLANNING COMMISSION'S STATEMENT:

I HEREBY STATE THAT THE PLANNING COMMISSION OF THE COUNTY OF CONTRA COSTA, STATE OF CALIFORNIA HAS APPROVED THE TENTATIVE MAP OF THIS SUBDIVISION UPON WHICH THIS MAP IS BASED.

ARUNA BHATT
DEPUTY DIRECTOR
DEPARTMENT OF CONSERVATION AND DEVELOPMENT
COMMUNITY DEVELOPMENT DIVISION

BY: _____ DATED: _____, 2023

BUILDING INSPECTOR'S STATEMENT:

A GEOTECHNICAL INVESTIGATION REPORT, PREPARED BY ESKO INCORPORATED, DATED 12/15/2022, FOR THE ESKO FERRARI 15 2024 PROJECT NO. 4820000101, HAS BEEN RECEIVED AND APPROVED. THE REPORT IS ON FILE IN THE BUILDING INSPECTION DIVISION, CONTRA COSTA COUNTY.

JASON GRADY
DEPUTY DIRECTOR
DEPARTMENT OF CONSERVATION AND DEVELOPMENT
BUILDING INSPECTION DIVISION

BY: _____ DATED: _____, 2023

COUNTY SURVEYOR'S STATEMENT:

THIS MAP WAS EXAMINED BY ME AND IS SUBSTANTIALLY THE SAME AS IT APPEARS ON THE VESTING TENTATIVE MAP, AND ANY APPROVED ALTERATIONS THEREOF. ALL PROVISIONS OF THE SUBDIVISION MAP ACT AND ANY LOCAL ORDINANCES APPLICABLE AT THE TIME OF APPROVAL OF THE VESTING TENTATIVE MAP HAVE BEEN COMPLIED WITH AND I AM SATISFIED THAT THE SAME IS TECHNICALLY CORRECT.

DANA W. TREZISE, L.S. 7438
INTERIM COUNTY SURVEYOR

DATED: _____, 2023

SURVEYOR'S STATEMENT:

THE SUBDIVISION MAP WAS PREPARED BY ME OR UNDER MY DIRECTION AND IS BASED UPON A FIELD SURVEY IN CONFORMANCE WITH THE REQUIREMENTS OF THE SUBDIVISION MAP ACT AND THE SUBDIVISION MAP ACT REGULATION. I HEREBY STATE THAT THIS FINAL MAP SUBSTANTIALLY CONFORMS TO THE CONDITIONALLY APPROVED TENTATIVE MAP, IF ANY, AND THAT ALL THE MONUMENTS INDICATED HEREBY ARE OF THE CORRECT TYPE AND LOCATION AND THAT THE MONUMENTS WILL BE SET WITHIN TWENTY FOUR MONTHS FROM THE DATE OF APPROVAL OF THIS FINAL MAP AND THE COMPLETION OF MONUMENTS WILL BE INDICATED ON THE RELOCATION OF THIS FINAL MAP AND THE SURVEY IS TRUE AND COMPLETE AS SHOWN, AND FURTHER STATE THAT THE SUBDIVISION 9591 IS A SUBDIVISION INTO PARCELS OF LAND CONTAINING 67.77 ACRES, MORE OR LESS.

INTERIM COUNTY SURVEYOR
L.S. 8917

DATED: March 17th, 2023



CLERK OF THE BOARD OF SUPERVISORS' STATEMENT:

STATE OF CALIFORNIA
CONTRA COSTA COUNTY

I, _____, CLERK OF THE BOARD OF SUPERVISORS OF CONTRA COSTA COUNTY, STATE OF CALIFORNIA, DO HEREBY CERTIFY THAT THE TENTATIVE MAP WAS PRESENTED TO SAID BOARD OF SUPERVISORS, AS PROVIDED BY SP AT A REGULAR MEETING HELD ON THE _____ DAY OF _____, 2023, AND SAID BOARD OF SUPERVISORS DID THEREUPON BY RESOLUTION DULY PASSED AND ADOPTED AT SAID MEETING APPROVED SAID MAP AND DID ACCEPT SUBJECT TO INSTALLATION AND ACCEPTANCE OF IMPROVEMENTS ON BEHALF OF THE PUBLIC ALL OF THE STREETS, ROADS, AVENUES OR EASEMENTS SHOWN THEREON AS DEDICATED TO PUBLIC USE. I FURTHER CERTIFY THAT ALL TAX LISTS HAVE BEEN EXAMINED AND THAT ALL BONDS AS REQUIRED BY LAW TO ACCOMPANY THE WITHIN MAP HAVE BEEN APPROVED BY THE BOARD OF SUPERVISORS OF CONTRA COSTA COUNTY, AND FILED IN MY OFFICE.

IN WITNESS WHEREOF, I HAVE HEREUNTO SET MY HAND THIS DAY _____ OF _____, 2023.
MADONNINO
CLERK OF THE BOARD OF SUPERVISORS OF
CONTRA COSTA COUNTY,
STATE OF CALIFORNIA

BY: _____ DEPUTY CLERK

SUBDIVISION 9591
A SUBDIVISION OF PARCELS 1-4, 7, AND 11, DOCUMENT NUMBER 2005-007061, RESULTANT PARCEL 2, DOCUMENT NUMBER 2022-0042518 AND RESULTANT PARCEL 8 AND RESULTANT PARCEL C,
DOCUMENT NUMBER 2022-0016154,
CONTRA COSTA COUNTY RECORDS
DISCOVERY BAY, CONTRA COSTA COUNTY, CALIFORNIA
MACKEY & SOMPS
ENGINEERS PLANNERS SURVEYORS
51479 SHAMUN DR. SUITE B
FOLSOM, CA 95630 (916) 975-0690
MARION 2023

LEGEND

- SUBDIVISION BOUNDARY
- PARCEL LINE
- EXISTING PROPERTY LINE
- EXISTING LINE
- EXISTING EASEMENT LINE
- EXISTING EASEMENT LINE
- FOUND 2 1/2" BRASS DISK MONUMENT
- STAMPED "S 7178" OR AS NOTED
- SET BRASS DISK IN MONUMENT WELL
- PER (R-1)
- SET STANDARD STREET MONUMENT
- STAMPED "S 8817"
- ANGLE POINT
- BOUNDARY
- EXISTING
- DOCUMENT NUMBER
- MONUMENT TO MONUMENT
- MONUMENT TO TIE LINE
- MONUMENT TO PROPERTY LINE
- PERFORMANCE EASEMENT
- PUBLIC UTILITY EASEMENT
- PIE
- RADIAL BEARING
- (R)
- (R-1)
- (5) INDICATES SHEET NUMBER

BASIS OF BEARINGS:
 THE BEARINGS OF THE 188777 WEST BETWEEN FOUND MONUMENTS AND PARCELS 1-4, 7, AND 11, CONTRA COSTA COUNTY RECORDS 2005-0070081, RESULTANT PARCEL 2, DOCUMENT NUMBER 2022-0042513 AND RESULTANT PARCEL 6 AND RESULTANT PARCEL C, WERE FIELD IN BOOK 483, AT PAGES 1 THROUGH 15, CONTRA COSTA COUNTY RECORDS, WAS USED AS THE BASIS OF BEARINGS SHOWN HEREON.

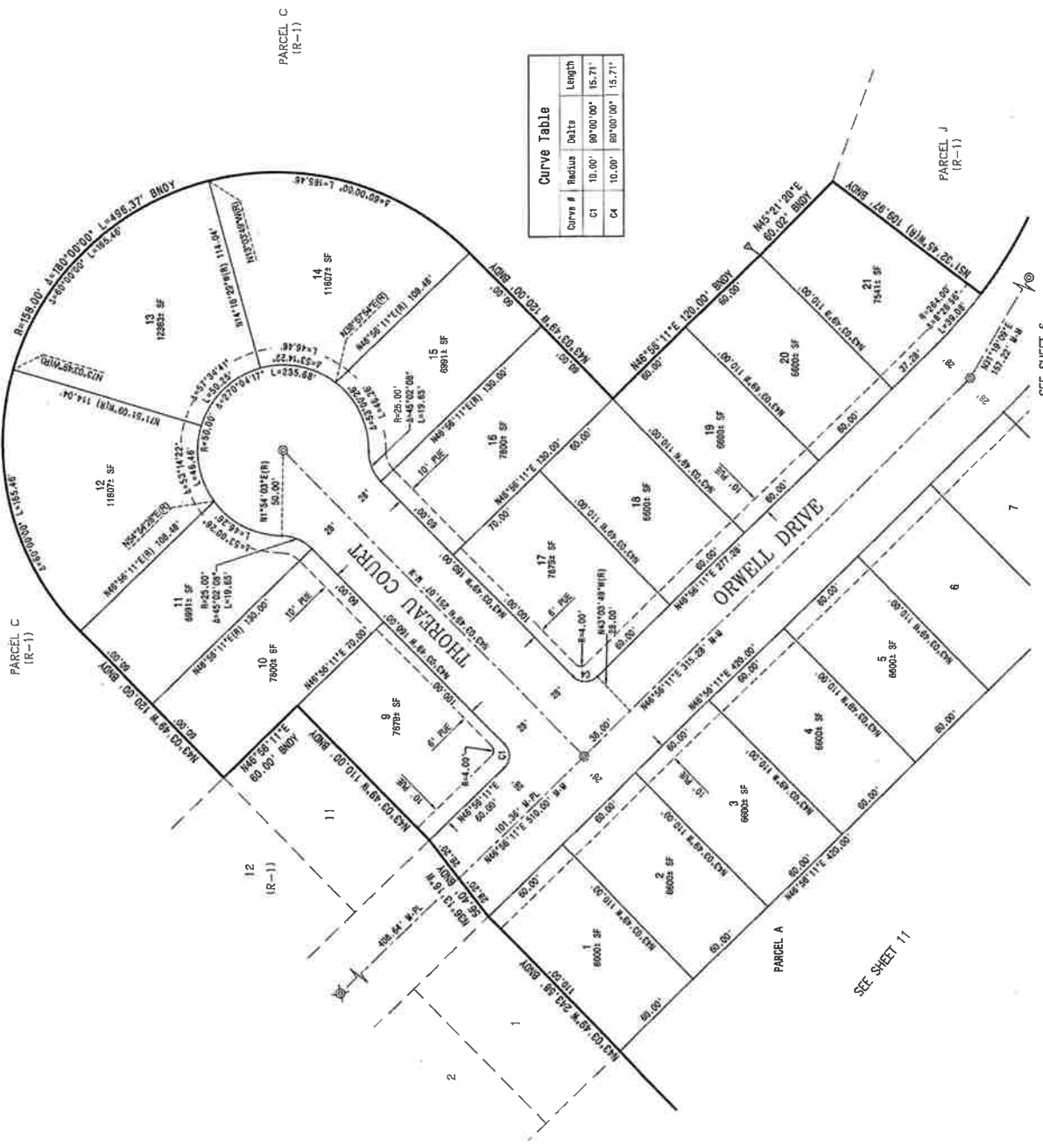
REFERENCES:
 (R-1) SUBDIVISION 8827, N. CONTRA COSTA COUNTY RECORDS
 (R-2) SUBDIVISION 8741, 885 N.T. CONTRA COSTA COUNTY RECORDS
 (R-3) THE COLLEGE HILL, DOC. 102822-8888H, CONTRA COSTA COUNTY RECORDS
 (R-4) SUBDIVISION 8438, 488 M. 10, CONTRA COSTA COUNTY RECORDS
 (R-5) SUBDIVISION 8430, 488 M. 17, CONTRA COSTA COUNTY RECORDS
 (R-6) SUBDIVISION 8457, 488 M. 22, CONTRA COSTA COUNTY RECORDS
 (R-7) SUBDIVISION 8462, 442 M. 6, CONTRA COSTA COUNTY RECORDS



0 20 40 80
 SCALE: 1"=40'

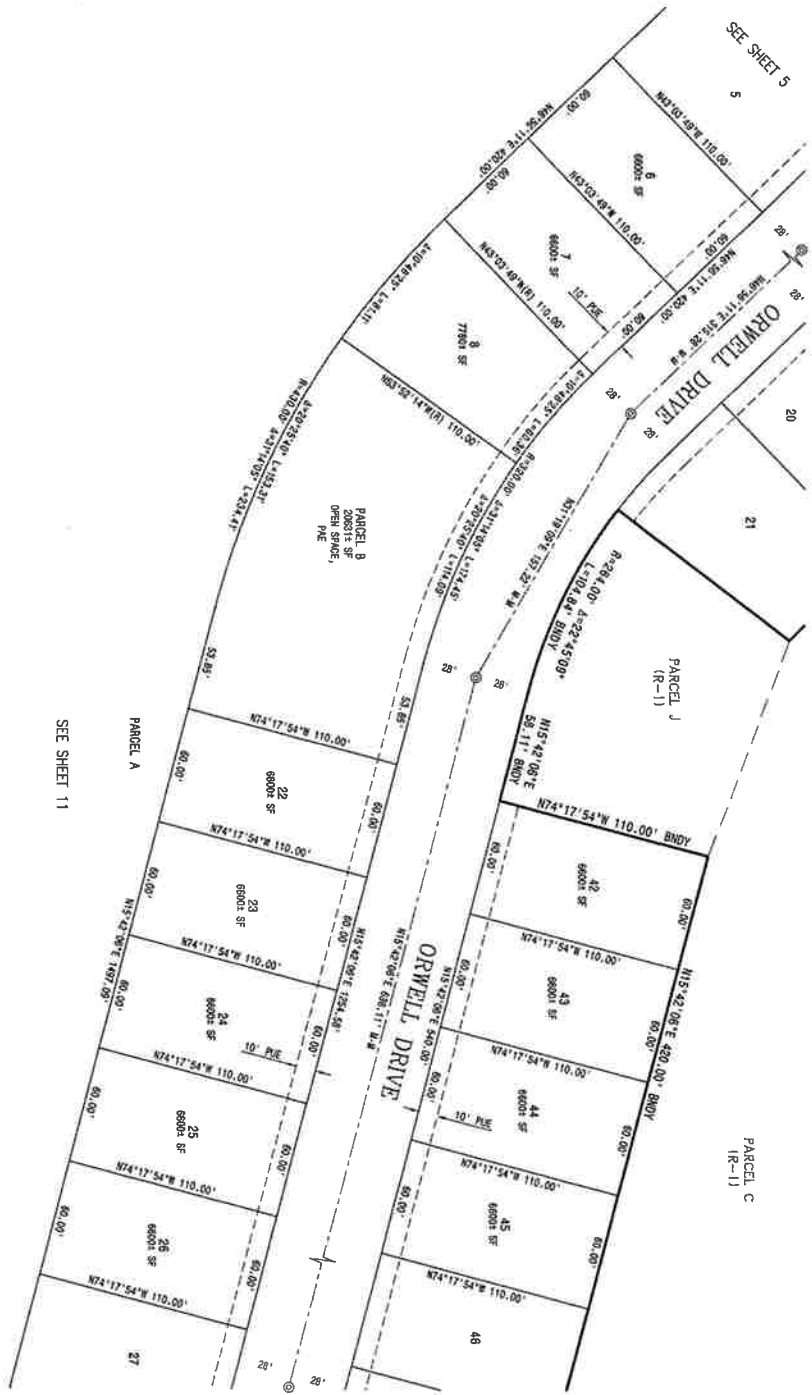
SUBDIVISION 9591
 A SUBDIVISION OF PARCELS 1-4, 7, AND 11, DOCUMENT NUMBER 2005-0070081, RESULTANT PARCEL 2, DOCUMENT NUMBER 2022-0042513 AND RESULTANT PARCEL 6 AND RESULTANT PARCEL C,
 DOCUMENT NUMBER 2022-0061614,
 CONTRA COSTA COUNTY RECORDS
 DISCOVERY BAY, CONTRA COSTA COUNTY, CALIFORNIA

MACKAY & SOMPS
 ENGINEERS PLANNERS SURVEYORS
 5189 FRANCHISE DRIVE, SUITE 100
 PLEASANTON, CALIFORNIA 94566
 MARCH 2023



Curve #	Radius	Delta	Length
C1	10.00'	90°00'00"	15.71'
C4	10.00'	90°00'00"	15.71'

SEE SHEET 6
 PORTION OF APR. 011-220-017-5, 011-220-018-3, 011-220-019-0, 011-230-007-4, AND 011-230-008-5



SEE SHEET 11

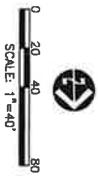
SEE SHEET 7

SEE SHEET 5

- REFERENCES:**
- (R-1) SUBDIVISION 9871 M, CONTRA COSTA COUNTY RECORDS
 - (R-2) SUBDIVISION 9710, 488 M, CONTRA COSTA COUNTY RECORDS
 - (R-3) SUBDIVISION 9710, 488 M, CONTRA COSTA COUNTY RECORDS
 - (R-4) SUBDIVISION 9426, 488 M, CONTRA COSTA COUNTY RECORDS
 - (R-5) SUBDIVISION 9430, 488 M, CONTRA COSTA COUNTY RECORDS
 - (R-6) SUBDIVISION 9451, 488 M, CONTRA COSTA COUNTY RECORDS
 - (R-7) SUBDIVISION 9426, 442 M, CONTRA COSTA COUNTY RECORDS

BASES OF BEARINGS:
 THE BEARINGS SHOWN ARE SET BETWEEN ROUND MONUMENTS OR BENCH MARKS WHICH ARE SHOWN ON THE PLAN AND FIELD IN RECORDS, AND FRAMES 1 THROUGH 15, CONTRA COSTA COUNTY RECORDS, WHICH WERE USED AS THE BASIS OF BEARINGS SHOWN HEREIN.

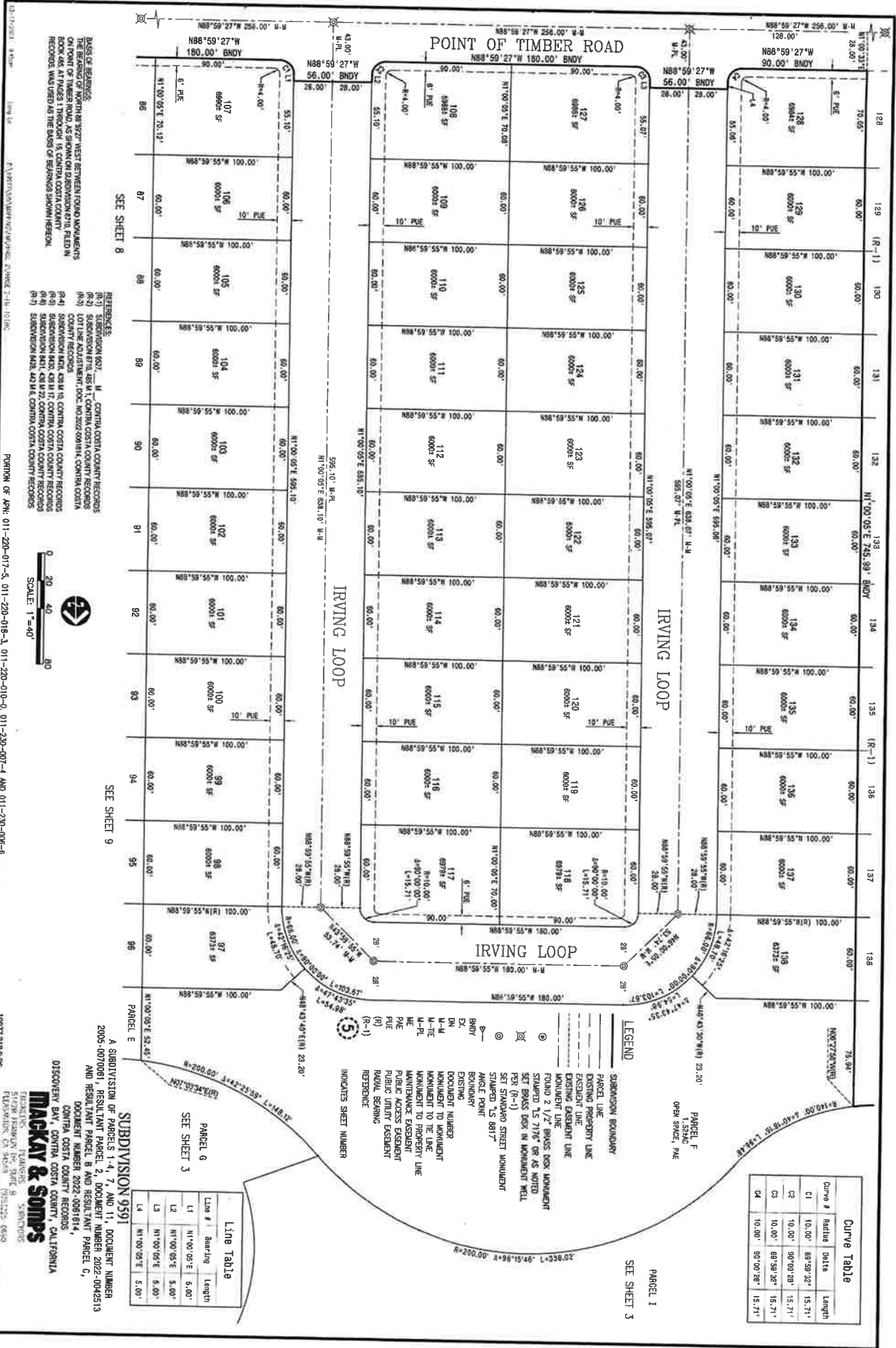
- LEGEND**
- SUBDIVISION BOUNDARY
 - PARCEL LINE
 - EXISTING PROPERTY LINE
 - EASEMENT LINE
 - EXISTING EASEMENT LINE
 - MONUMENT LINE
 - ROUND 2 1/2" BRASS DISK MONUMENT
 - ⊗ STAMPED 1.5" 7/16" OR AS NOTED SET BRASS DISK IN MONUMENT WELL
 - ⊙ SET SPANARD STREET MONUMENT
 - ⊙ STAMPED 7/8" 8/17"
 - ⊙ ANGLE POINT
 - BENCH MARK
 - EX. EXISTING
 - DN DOCUMENT NUMBER
 - M-M MONUMENT TO MONUMENT
 - M-PL MONUMENT TO PROPERTY LINE
 - M-ME MAINTENANCE EASEMENT
 - PLC PUBLIC ACCESS EASEMENT
 - PUE PUBLIC UTILITY EASEMENT
 - RD ROAD BEARING
 - (R-1) REFERENCE
 - (5) INDICATES SHEET NUMBER



SUBDIVISION 9591

A SUBDIVISION OF PARCELS 4, 7, AND 11, DOCUMENT NUMBER 2005-0070961, RESIDENT PARCEL 2, DOCUMENT NUMBER 2022-0042513 AND RESIDENT PARCEL 8 AND RESIDENT PARCEL C, DOCUMENT NUMBER 2022-0081614, CONTRA COSTA COUNTY RECORDS DISCOVERY BAY, CONTRA COSTA COUNTY, CALIFORNIA

MACKAY & SOMPS
 ENGINEERS PLANNERS SURVEYORS
 51423 FRANKLIN DRIVE, SUITE 100
 PLEASANTON, CA 94588 (925) 255-6690
 MARCH 2023



Curve #	Radius	Delta	Length
C1	10.00'	89°59'32"	15.71'
C2	10.00'	90°00'28"	15.71'
C3	10.00'	89°59'32"	15.71'
C4	10.00'	90°00'28"	15.71'

LEGEND

- SUBDIVISION BOUNDARY
- PARCEL LINE
- EXISTING PROPERTY LINE
- EXISTING EASEMENT LINE
- MONUMENT LINE
- FOUND 2 1/2" BRASS DISK MONUMENT STAMPED 15 7176' OR AS NOTED SET BRASS DISK IN MONUMENT WELL PER (R-1)
- SET STANDARD STREET MONUMENT STAMPED 15 8817'
- MONUMENT
- BOUNDARY
- EXISTING
- EX.
- DN.
- MONUMENT TO MONUMENT
- MONUMENT TO LINE
- MONUMENT TO PROPERTY LINE
- MAINTENANCE EASEMENT
- PUBLIC ACCESS EASEMENT
- PUBLIC UTILITY EASEMENT
- RAIL BEARING
- REFERENCE

INDICATES SHEET NUMBER

(5)

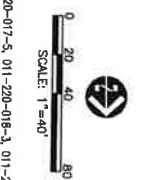
Line #	Bearing	Length
L1	N1°00'05"E	5.00'
L2	N1°00'05"E	5.00'
L3	N1°00'05"E	5.00'
L4	N1°00'05"E	5.00'

BASE OF RECORDS

THE BEARING OF NORTH 89°59'32" WEST BETWEEN FOUND MONUMENTS AT THE CORNER OF TIMBER ROAD, AS SHOWN ON SUBDIVISION #718, FILED IN RECORDS, WAS USED AS THE BASIS OF BEARINGS SHOWN HEREON.

REFERENCES:

- (R-1) SUBDIVISION 9597, M. CONTRA COSTA COUNTY RECORDS
- (R-2) SUBDIVISION #718, M.T. CONTRA COSTA COUNTY RECORDS
- (R-3) COTTAGE ACQUISITION, DOC. NO.2022-008184, CONTRA COSTA COUNTY RECORDS
- (R-4) SUBDIVISION #42, KEM M.T. CONTRA COSTA COUNTY RECORDS
- (R-5) SUBDIVISION #40, KEM M.T. CONTRA COSTA COUNTY RECORDS
- (R-6) SUBDIVISION #41, KEM M.T. CONTRA COSTA COUNTY RECORDS
- (R-7) SUBDIVISION #42, KEM M.T. CONTRA COSTA COUNTY RECORDS



SUBDIVISION 9591

A SUBDIVISION OF PARCELS 1-4, 7, AND 11, DOCUMENT NUMBER 2005-0070981, RESULTANT PARCEL 2, DOCUMENT NUMBER 2022-0042513 AND RESULTANT PARCEL 8 AND RESULTANT PARCEL C, DOCUMENT NUMBER 2022-0061614, CONTRA COSTA COUNTY RECORDS, DISCOVERY BAY, CONTRA COSTA COUNTY, CALIFORNIA

TRACY & SOMPS

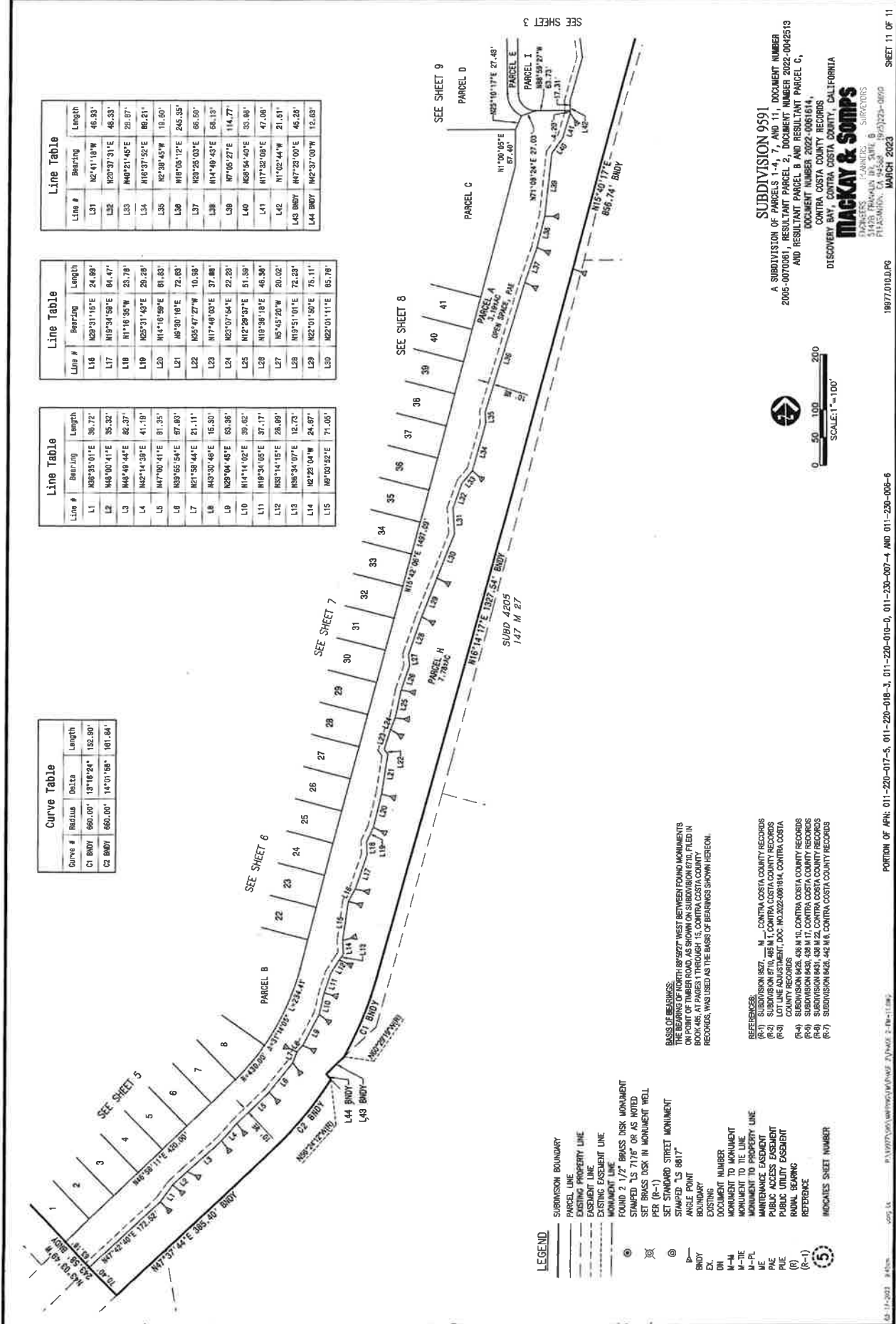
REGISTERED PROFESSIONAL SURVEYORS
 FLENSBURG AVENUE, SUITE 6
 PLEASANTON, CA 94566
 (925) 222-0850
 MARCH 2023

Curve #	Radius	Delta	Length
C1 BNDY	660.00'	13°16'24"	132.80'
C2 BNDY	660.00'	14°01'08"	181.84'

Line #	Bearing	Length
L1	N03°35'01"E	36.72'
L2	N43°00'41"E	35.32'
L3	N46°49'44"E	82.37'
L4	N42°14'39"E	41.19'
L5	N47°00'41"E	81.35'
L6	N33°55'54"E	87.83'
L7	N21°58'44"E	21.11'
L8	N43°30'48"E	16.30'
L9	N29°04'45"E	63.96'
L10	N14°02'02"E	39.62'
L11	N19°34'05"E	37.17'
L12	N33°14'15"E	28.69'
L13	N05°54'07"E	12.79'
L14	N2°23'04"W	24.67'
L15	N0°03'22"E	71.05'

Line #	Bearing	Length
L16	N29°31'15"E	24.89'
L17	N19°54'53"E	84.47'
L18	N1°16'35"W	23.78'
L19	N25°31'43"E	29.29'
L20	N14°16'59"E	81.83'
L21	N3°00'16"E	72.63'
L22	N05°47'27"W	10.99'
L23	N17°49'03"E	37.88'
L24	N23°07'54"E	22.23'
L25	N12°28'37"E	51.99'
L26	N19°38'18"E	46.38'
L27	N5°45'20"W	20.02'
L28	N19°31'01"E	72.63'
L29	N22°01'50"E	75.11'
L30	N22°01'11"E	85.78'

Line #	Bearing	Length
L31	N2°41'18"W	46.33'
L32	N20°37'31"E	48.33'
L33	N48°21'46"E	29.87'
L34	N16°37'52"E	88.21'
L35	N2°39'45"W	19.50'
L36	N18°03'12"E	246.35'
L37	N20°25'03"E	66.50'
L38	N14°49'43"E	58.13'
L39	N7°05'27"E	114.77'
L40	N28°54'40"E	33.86'
L41	N17°32'09"E	47.08'
L42	N1°02'44"W	21.61'
L43 BNDY	N47°25'00"E	45.26'
L44 BNDY	N42°37'00"W	12.83'



- LEGEND**
- SUBDIVISION BOUNDARY
 - PARCEL LINE
 - PROPERTY LINE
 - EASEMENT LINE
 - EXISTING EASEMENT LINE
 - MONUMENT LINE
 - FOUND 2 1/2" BRASS DISK MONUMENT
 - SET BRASS DISK IN MONUMENT WELL PER (R-1)
 - SET STANDARD STREET MONUMENT
 - STAMPED "LS 6817"
 - ANGLE POINT
 - BOUNDARY
 - EXISTING
 - DOCUMENT NUMBER
 - MONUMENT TO MONUMENT
 - MONUMENT TO TIE LINE
 - MONUMENT TO PROPERTY LINE
 - MONUMENT TO MONUMENT
 - PUBLIC ACCESS EASEMENT
 - PUBLIC UTILITY EASEMENT
 - RAIL BEARING
 - (R-1)
 - REFERENCE
 - INDICATES SHEET NUMBER

BASES OF BEARINGS:
 THE BEARING OF NORTH 88°59'27" WEST BETWEEN FOUND MONUMENTS ON POINT OF TIMBER ROAD, AS SHOWN ON SUBDIVISION 8710, FILED IN BOOK 486, AT PAGES 1 THROUGH 15, CONTRA COSTA COUNTY RECORDS, WAS USED AS THE BASIS OF BEARINGS SHOWN HEREON.

- REFERENCES:**
- (R-1) SUBDIVISION 8577, M. CONTRA COSTA COUNTY RECORDS
 - (R-2) SUBDIVISION 8710, 486 M. CONTRA COSTA COUNTY RECORDS
 - (R-3) LOT LINE ADJUSTMENT, DOC. NO. 2022-0081814, CONTRA COSTA COUNTY RECORDS
 - (R-4) SUBDIVISION 8128, 438 M. 10, CONTRA COSTA COUNTY RECORDS
 - (R-5) SUBDIVISION 8451, 438 M. 22, CONTRA COSTA COUNTY RECORDS
 - (R-6) SUBDIVISION 8428, 443 M. 6, CONTRA COSTA COUNTY RECORDS
 - (R-7) SUBDIVISION 8428, 443 M. 6, CONTRA COSTA COUNTY RECORDS

SUBDIVISION 9591
 A SUBDIVISION OF PARCELS 1-4, 7, AND 11, DOCUMENT NUMBER 2065-0070081, RESULTANT PARCEL 2, DOCUMENT NUMBER 2022-0042513 AND RESULTANT PARCEL B AND RESULTANT PARCEL C, DOCUMENT NUMBER 2022-0061614,
 CONTRA COSTA COUNTY RECORDS
 DISCOVERY BAY, CONTRA COSTA COUNTY, CALIFORNIA
MACKAY & SOMPS
 ENGINEERS & PLANNERS
 5147B TRAVELER DR., SUITE 6
 PLEASANTON, CA 94568 (925) 239-0669
 MARCH 2023

