

# Flood Control / Drainage / Stormwater Funding



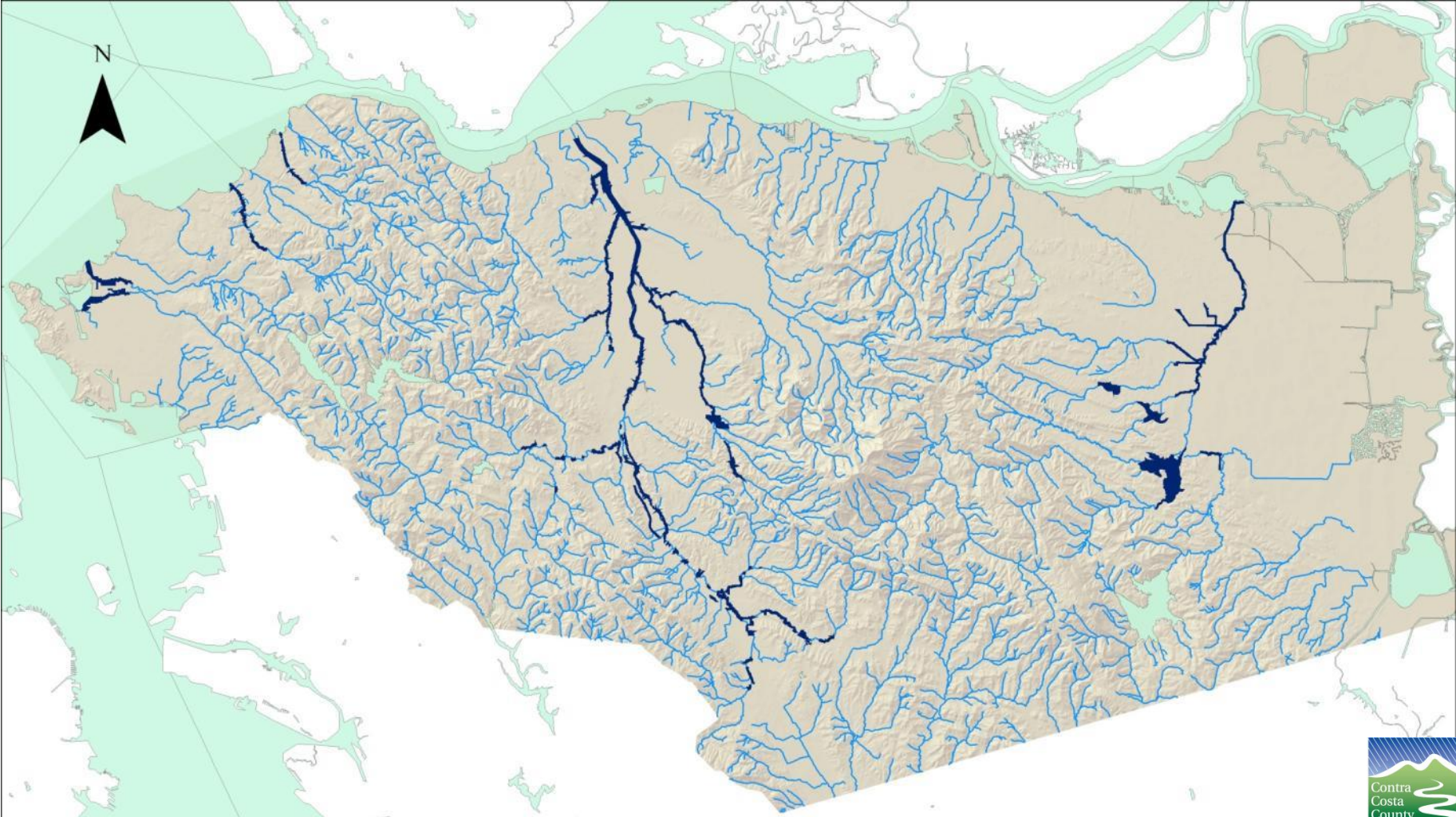
Contra Costa County  
**Flood Control**  
& Water Conservation District

**City of Concord**  
**July 10, 2018**

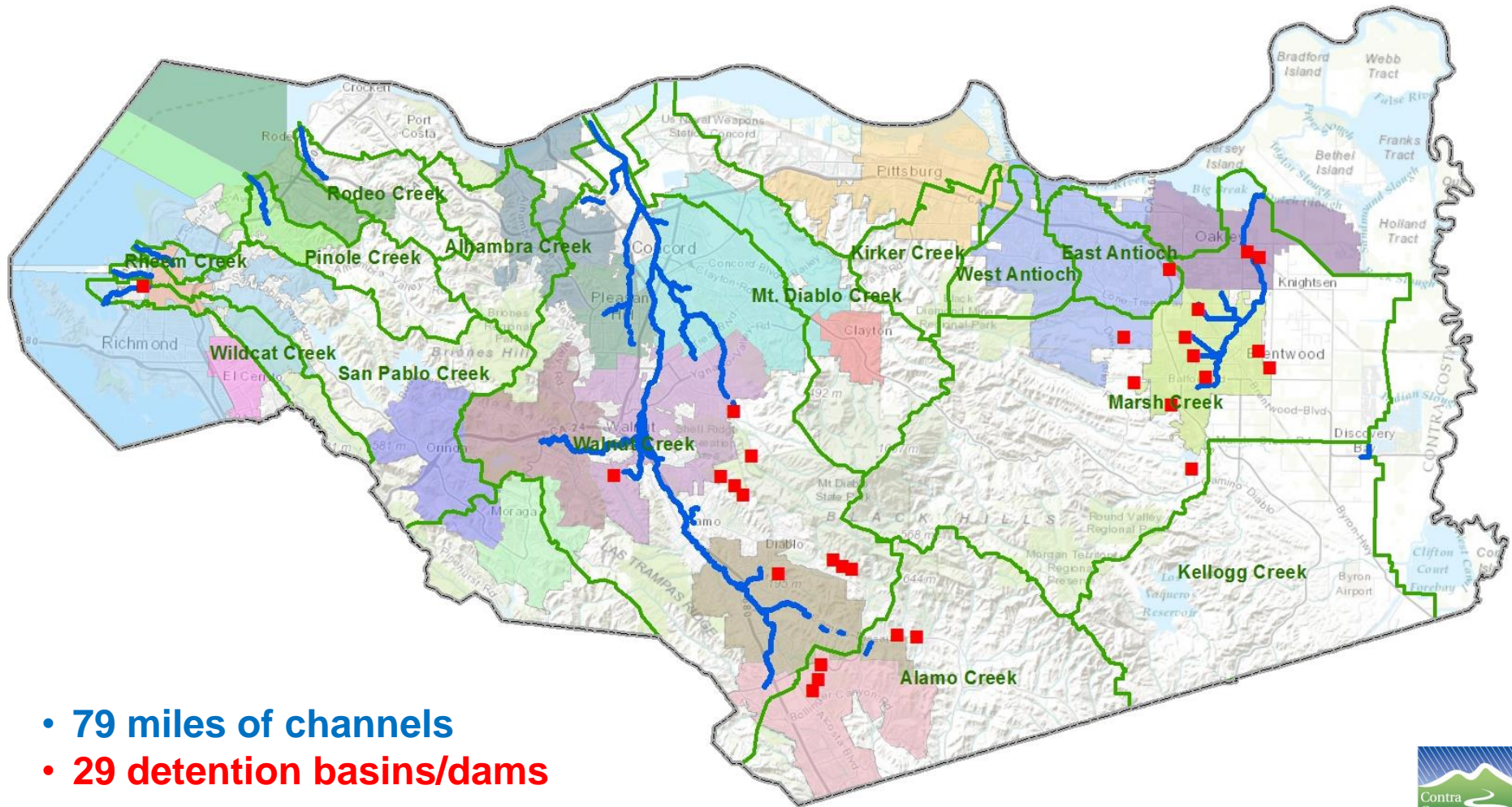


Pine Creek Flooding, Concord 1958

# County Creeks vs. Flood Control Infrastructure

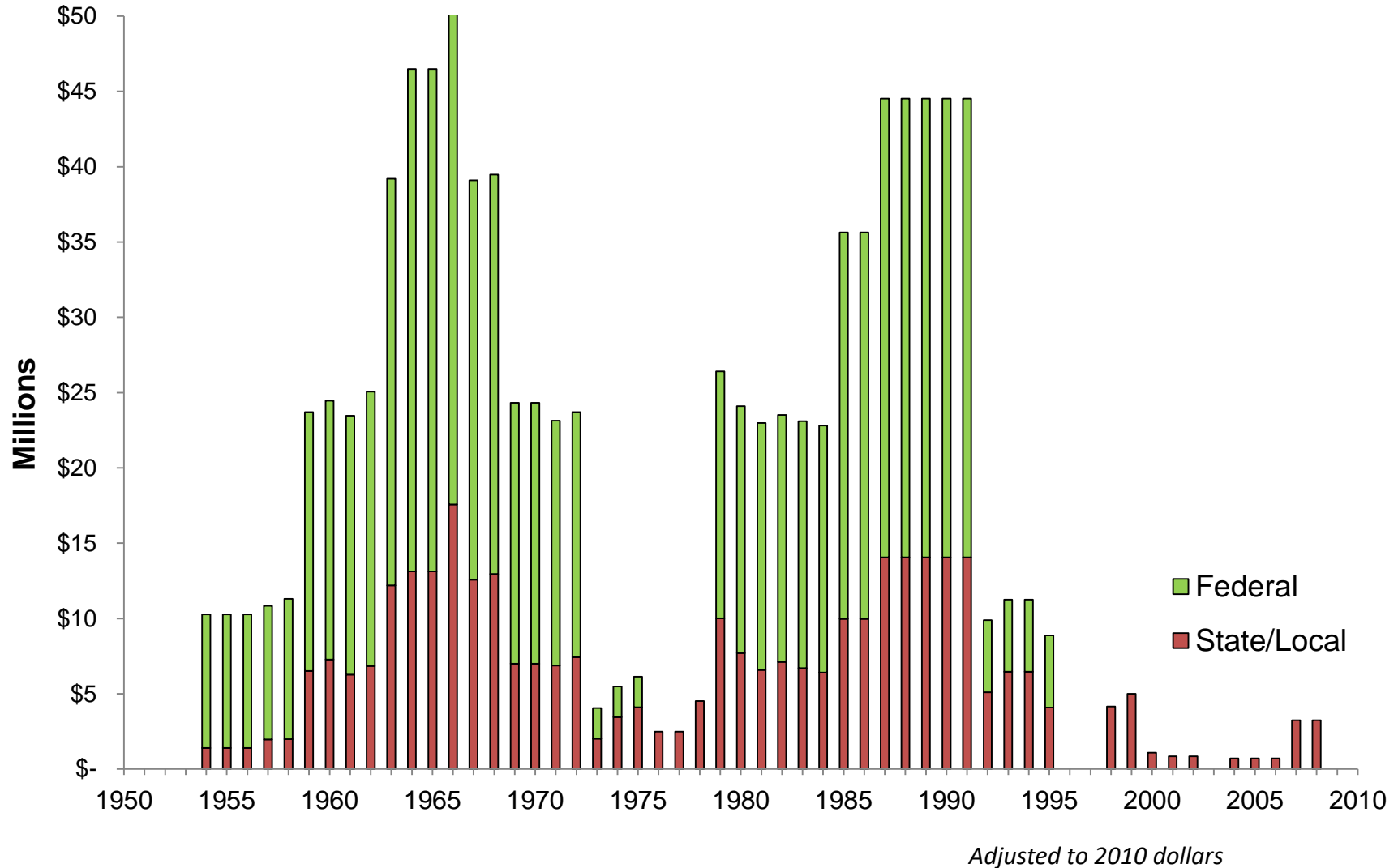


# Flood Control Infrastructure



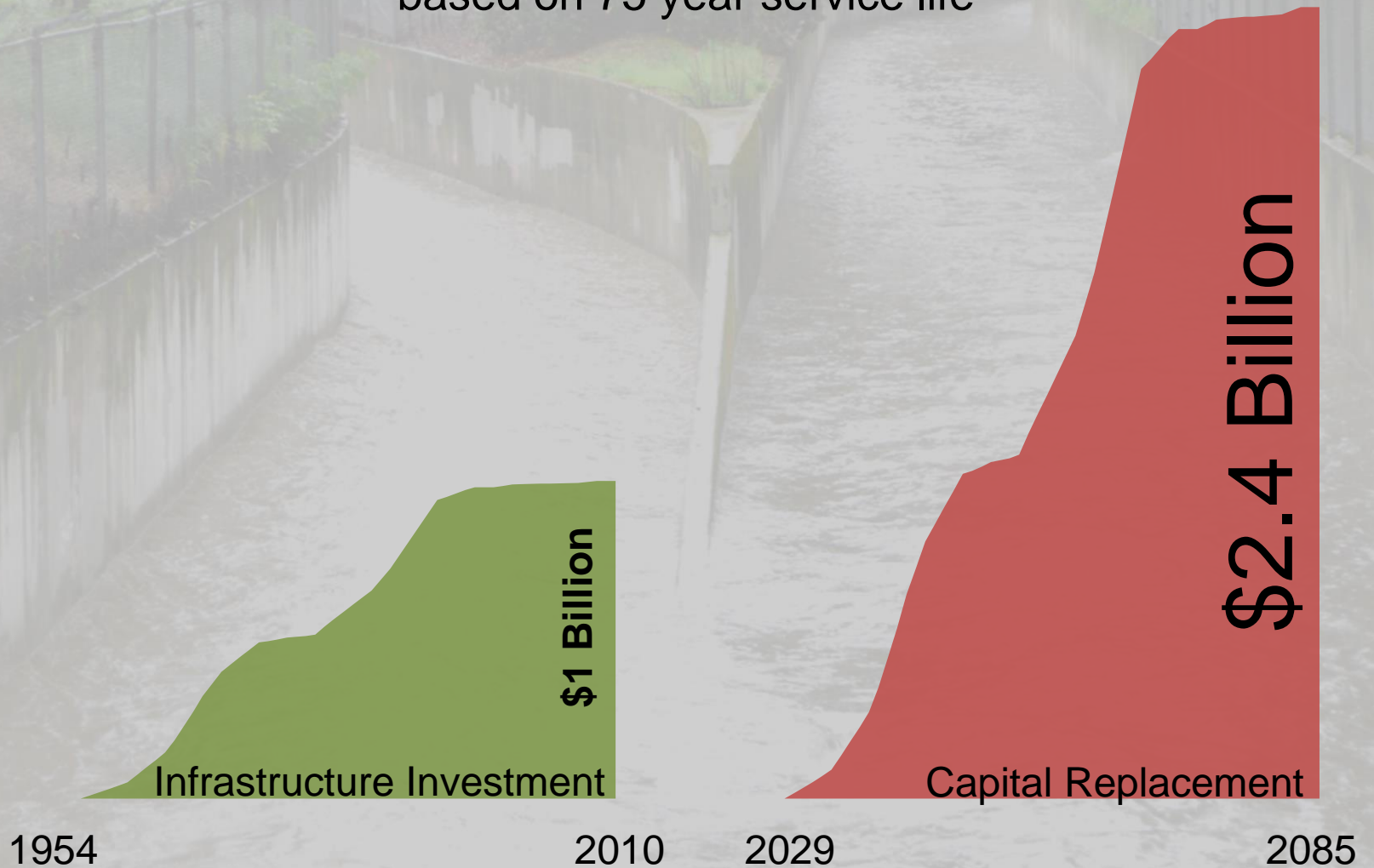
- 79 miles of channels
- 29 detention basins/dams

# \$1 Billion Investment 1951 - 2010

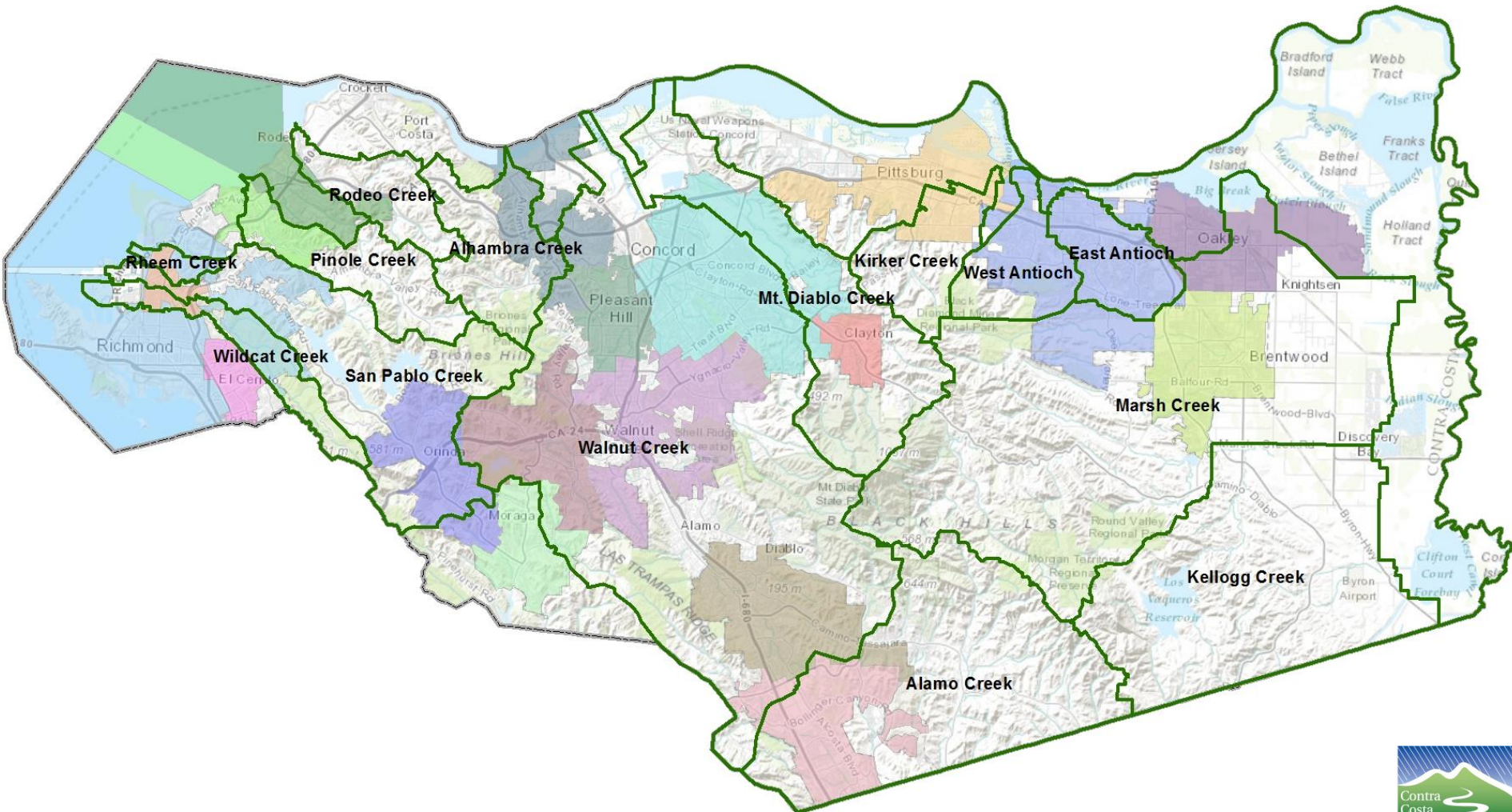


# Infrastructure Replacement Need

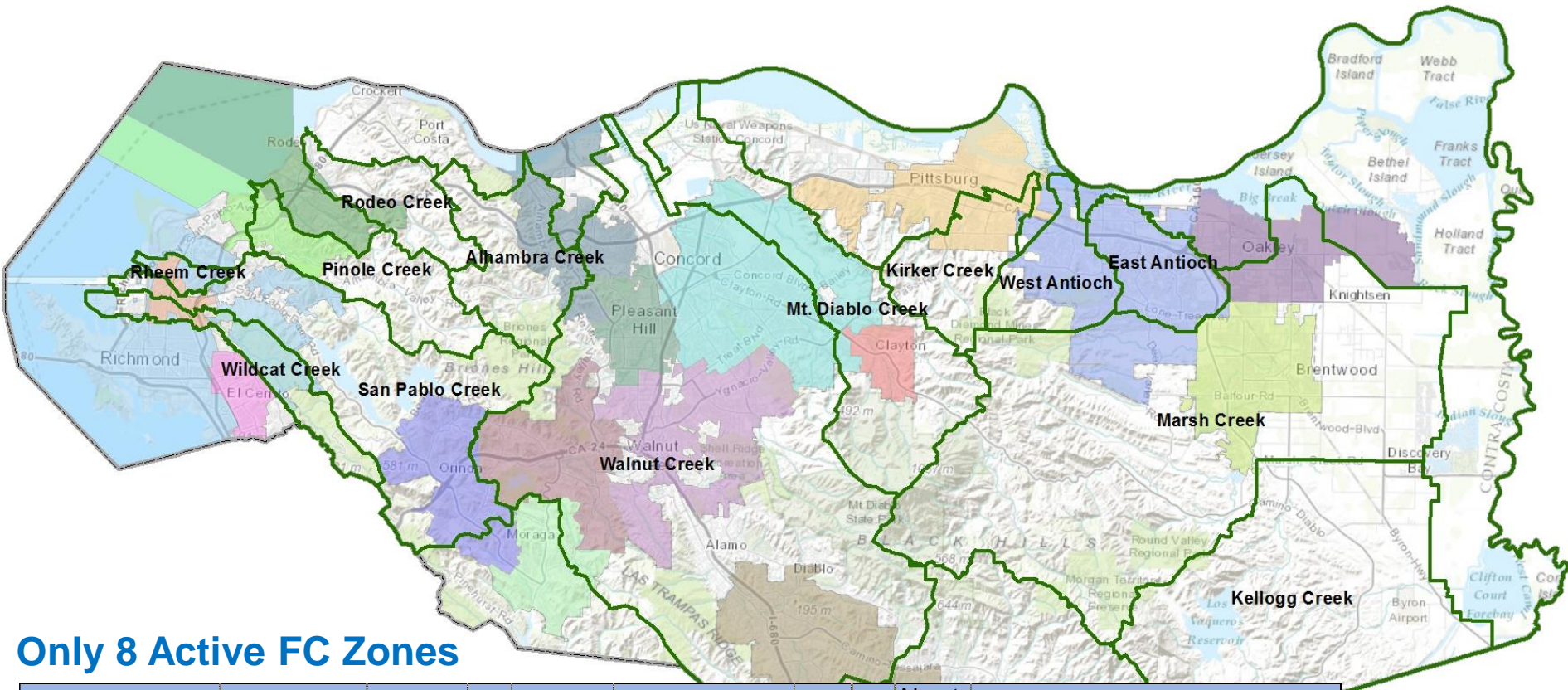
based on 75 year service life



# 14 Formed Flood Control Zones



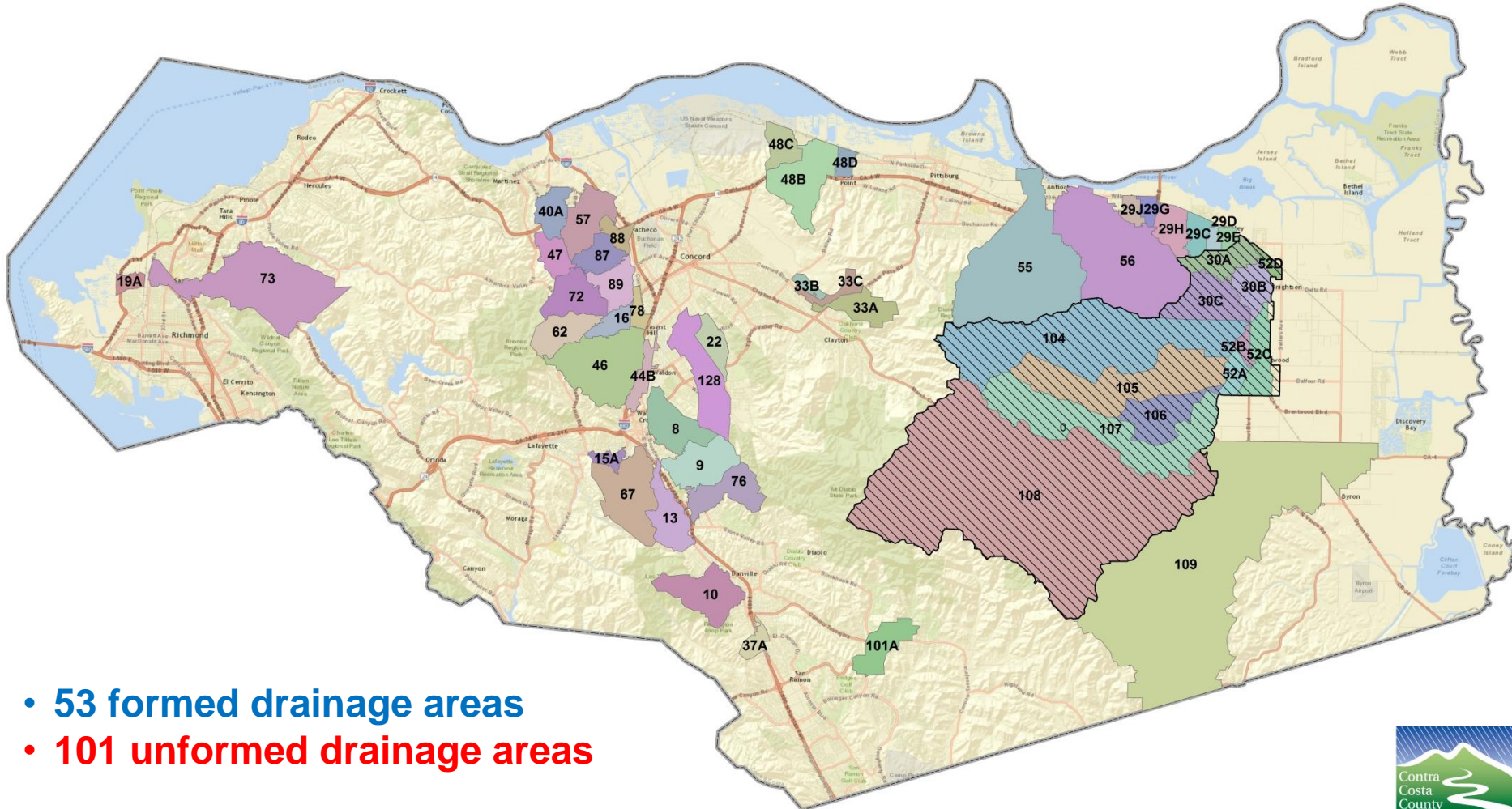
# 14 Formed Flood Control Zones



## Only 8 Active FC Zones

Funding Entity Name	Watershed Name	Abbreviation	Fund	Tax Source	Tax Designation	Capital	Mtce	Adequate for Mtce	Comments:
Flood Control Zone 1	Marsh Creek	FCZ 1	7521	Portion of 1%	FLOOD CONTROL Z-1	Y	Y	Y	Extra revenue can be used for capital.
Flood Control Zone 2	Kellogg Creek	FCZ 2	7522	Portion of 1%	none collected	Y	Y	N	Small cash balance. Maintenance funded by SUA 17.
Flood Control Zone 3B	Walnut Creek	FCZ 3B	7520	Portion of 1%	FLOOD CONTROL Z-3B	Y	Y	Y	Extra revenue can be used for capital.
Flood Control Zone 6 and 6A	San Pablo Creek	FCZ 6&6A	7526	Portion of 1%	none collected	Y	Y	N	Small cash balance. Maintenance funded by SUA 17
Flood Control Zone 7	Wildcat Creek	FCZ 7	7527	Portion of 1%	FLOOD CONTROL Z-7	Y	Y	N	Small cash balance. Maintenance funded by SUA 17
Flood Control Zone 8	Lower Rodeo Creek	FCZ 8	7530	Portion of 1%	FLOOD CONTROL Z-8	Y	Y	N	Small cash balance. Maintenance funded by SUA 17
Flood Control Zone 8A	Upper Rodeo Creek	FCZ 8A	7531	Portion of 1%	FLOOD CONTROL Z-8A	Y	Y	N	Small cash balance. Maintenance funded by SUA 17
Flood Control Zone 9	Pinole Creek	FCZ 9&9A	7532	Portion of 1%	none collected	Y	Y	N	No cash. Maintenance funded by loans from FCD.
Drainage Area 127	Rheim Creek	DA 127	7563	Portion of 1%	LOOD CONTRL D-127	Y	Y	N	No cash. Maintenance funded by loans from FCD.

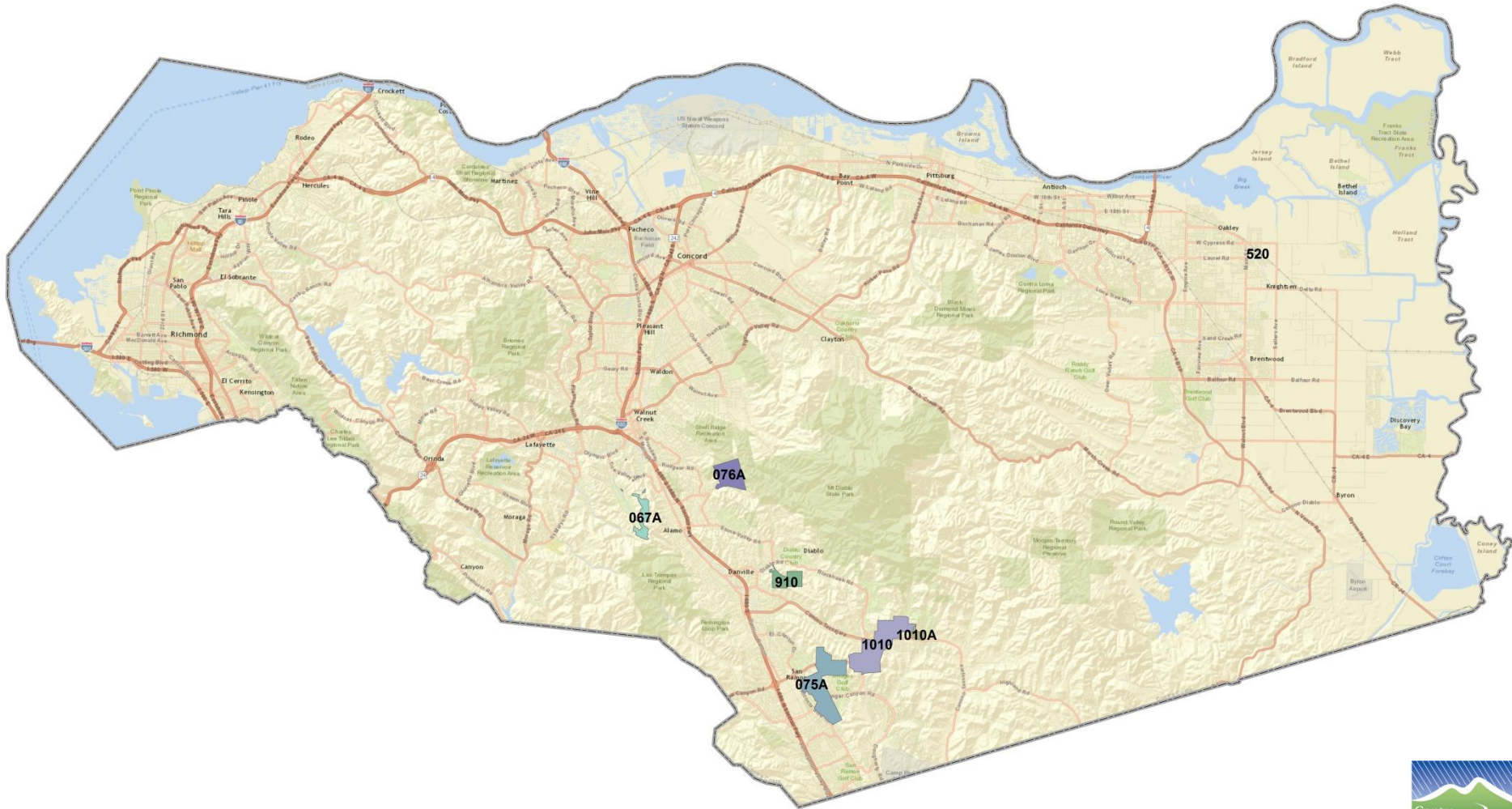
# Flood Control Drainage Areas



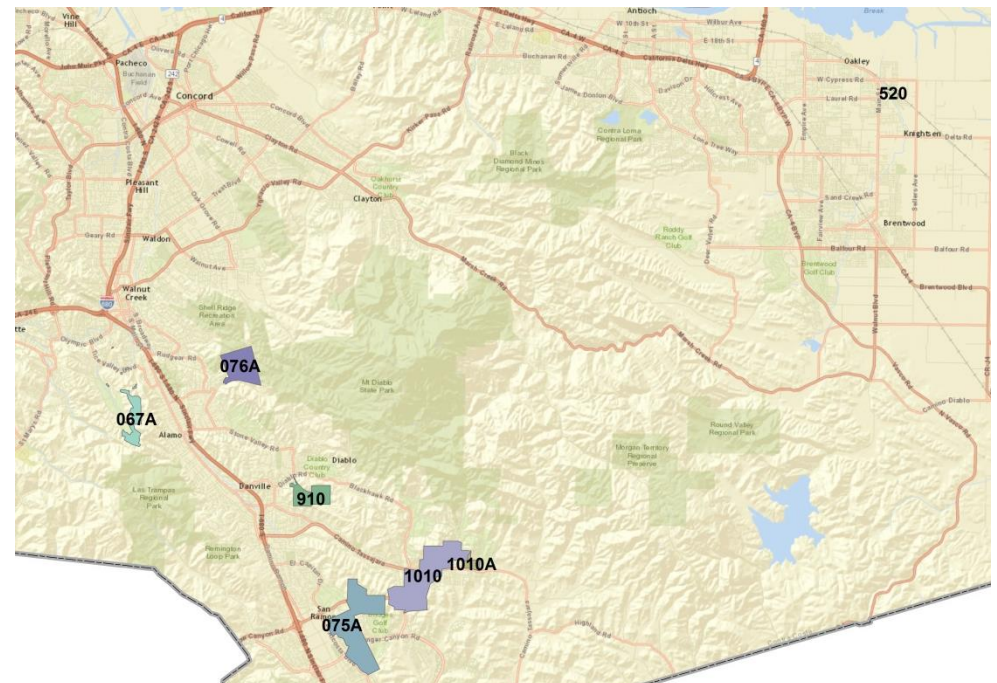
- 53 formed drainage areas
- 101 unformed drainage areas



# 7 Drainage Area Benefit Assessment Areas

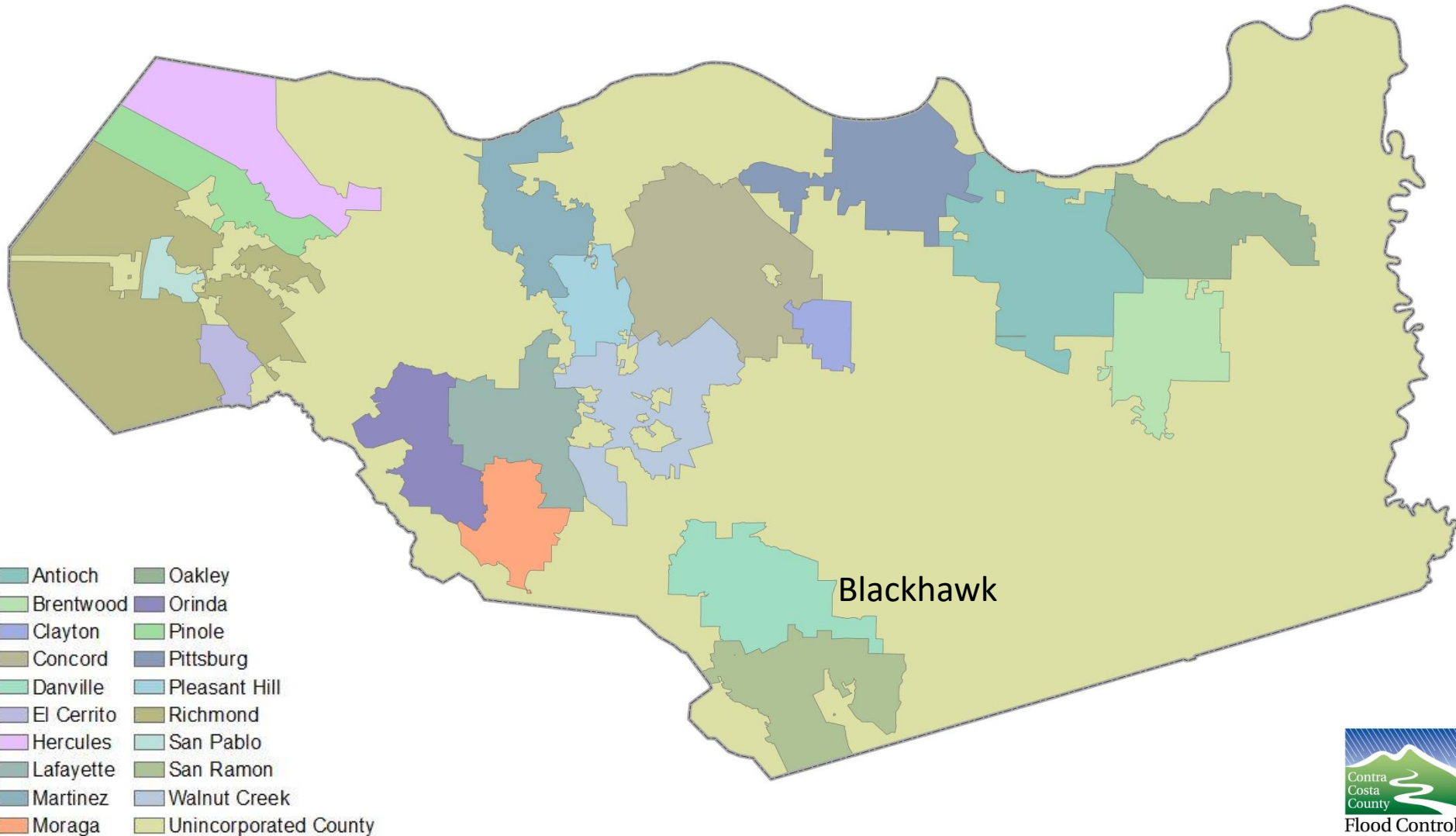


# 7 Drainage Area Benefit Assessment Areas

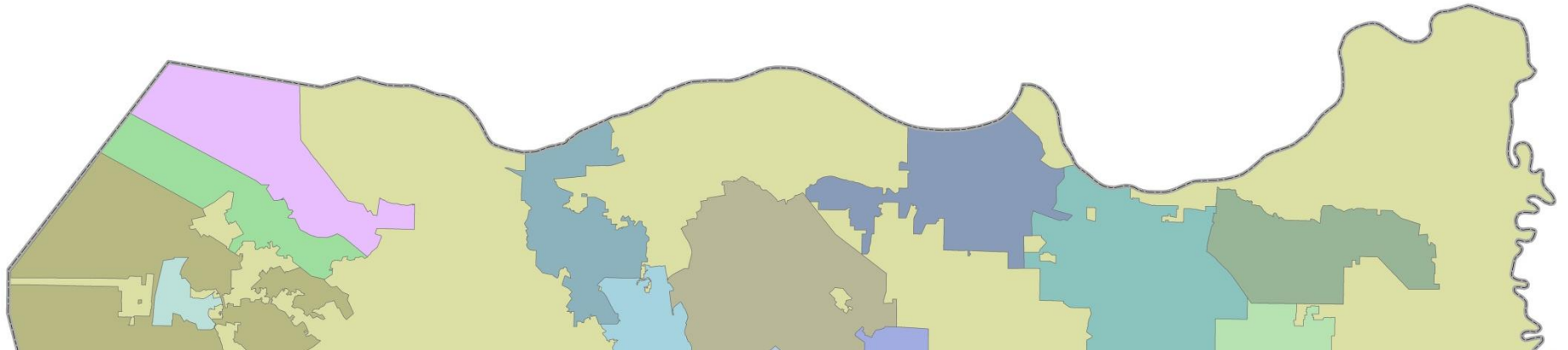


Funding Entity Name	Watershed Name	Abbreviation	Fund	Tax Source	Tax Designation	Capital	Mtce	Adequate for Mtce	Comments:
Drainage Area Benefit Assessment 67A	Upper Tice Creek Watershed	DABA 67A	7575	Assessment	CO DRAINAGE 67A	N	Y	Y	Adequately funded. Able to increase annual assessments and maintain large emergency fund.
Drainage Area Benefit Assessment 75A	Canyon Lakes Facilities	DABA 75A	7536	Assessment	CO DRAINAGE 75A	N	Y	Y	Adequately funded. Able to increase annual assessments and maintain large emergency fund.
Drainage Area Benefit Assessment 76A	Bogue Ranch Basins	DABA 76A	7576	Assessment	CO DRAINAGE 76A	N	Y	Y	Adequately funded. Able to increase annual assessments and maintain large emergency fund.
Drainage Area Benefit Assessment 520	East Oakley Basins	DABA 520	7577	Assessment	CO DRAINAGE 520-OAKLEY	N	Y	Y	Adequately funded. Able to increase annual assessments and maintain large emergency fund.
Drainage Area Benefit Assessment 910	Rassier Ranch Basin	DABA 910	7560	Assessment	CO DRAINAGE 910	N	Y	Y	Adequately funded. Able to increase annual assessments and maintain large emergency fund.
Drainage Area Benefit Assessment 1010	West Alamo Creek	DABA 1010	7580	Assessment	CO DRAINAGE 1010	N	Y	Y	Adequately funded. Able to increase annual assessments and maintain large emergency fund.
Drainage Area Benefit Assessment 1010A	Shadow Creek Basin	DABA 1010A	7582	Assessment	CO DRAINAGE 1010A	N	Y	Y	Adequately funded. Able to increase annual assessments and maintain large emergency fund.

# 2 County Drainage Maintenance Areas



# 2 County Drainage Maintenance Areas

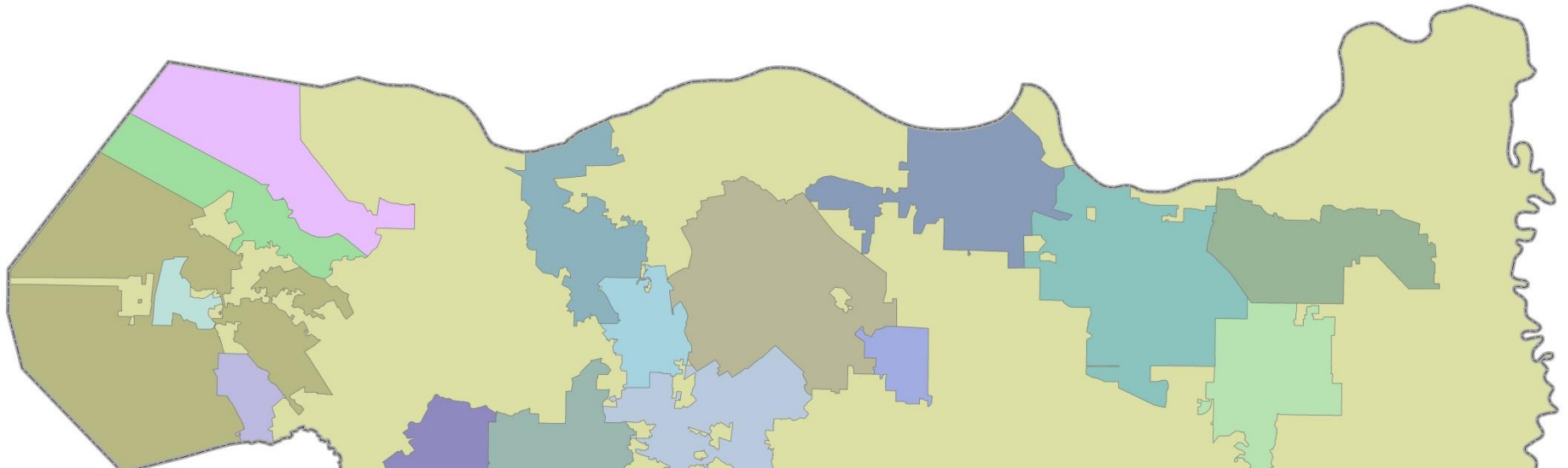


Funding Entity Name	Watershed Name	Abbreviation	Fund	Tax Source	Tax Designation	Capital	Mtce	Adequate for Mtce	Comments:
County-wide General Drainage Maintenance	Unincorporated County Watersheds	Co-wide	0330	Portion of 1%	COUNTY GENERAL	N	Y	N	Prior to 7/1/15 was funded only by SUA 17. Now supplemented by County GF.
County Service Area M-23	Blackhawk Facilities	CSA M-23	7496	Portion of 1%	CO SERV AREA M-23	N	Y	Y	Adequately funded. Able to increase annual assessments and maintain large emergency fund.



- Antioch
- Brentwood
- Clayton
- Concord
- Danville
- El Cerrito
- Hercules
- Lafayette
- Martinez
- Moraga
- Oakley
- Orinda
- Pinole
- Pittsburg
- Pleasant Hill
- Richmond
- San Pablo
- San Ramon
- Walnut Creek
- Unincorporated County

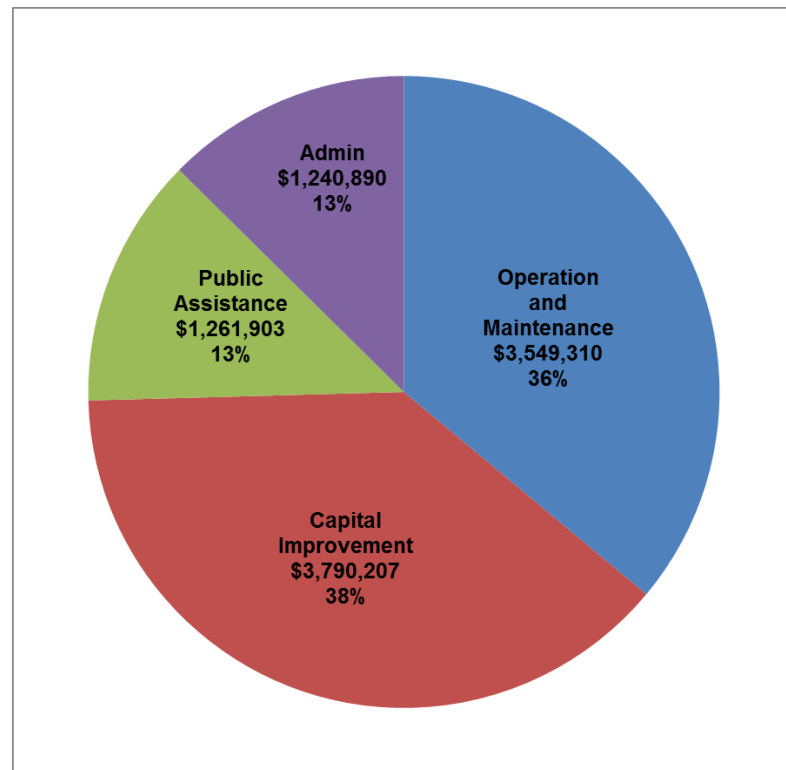
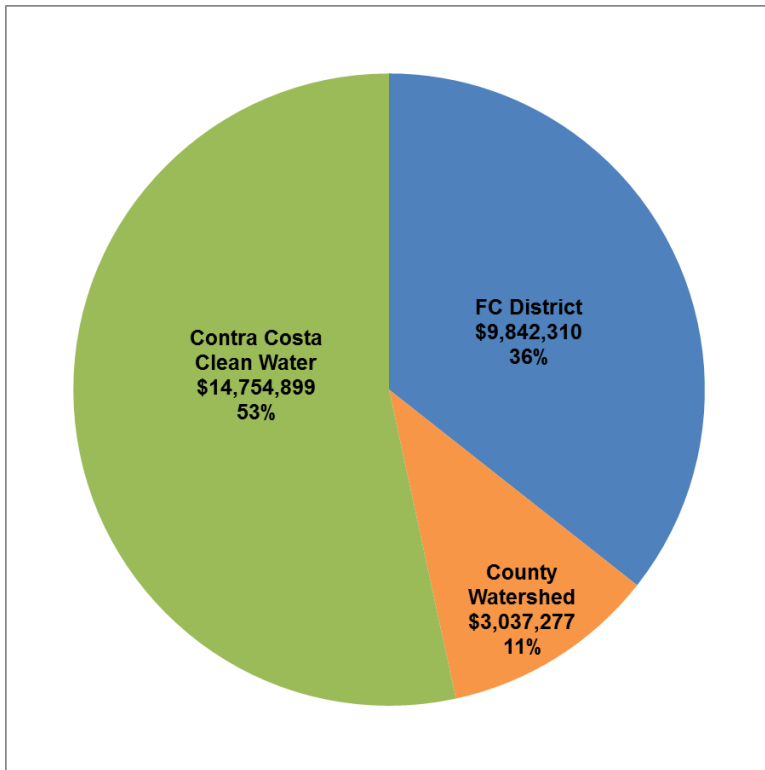
# Flood Control District General Fund



Funding Entity Name	Watershed Name	Abbreviation	Fund	Tax Source	Tax Designation	Capital	Mtce	Adequate for Mtce	Comments:
Flood Control District	Contra Costa County	FCD	7505	Portion of 1%	C C FLOOD CONTROL	N	N	N/A	Public assistance, hydrology, administration, loans.

- Antioch
- Brentwood
- Clayton
- Concord
- Danville
- El Cerrito
- Hercules
- Lafayette
- Martinez
- Moraga
- Oakley
- Orinda
- Pinole
- Pittsburg
- Pleasant Hill
- Richmond
- San Pablo
- San Ramon
- Walnut Creek
- Unincorporated County

# Flood Control Division Major Programs



Total: 27.6 M

Data from: FY 10-11 to FY 12-13 Averages of Annual Expenditures

# Program Accounting

**94 Funds**

**950 Work Orders**

# How We Are Funded



## RUSSELL V. WATTS

CONTRA COSTA COUNTY TREASURER-TAX COLLECTOR  
 ROOM 100, 625 COURT STREET, MARTINEZ, CA 94553  
 TELEPHONE: (925) 957-5280 FAX: (925) 957-2898

## 2012-2013

FISCAL YEAR JULY 1, 2012 TO JUNE 30, 2013

## SECURED PROPERTY TAX BILL

INTERNET COPY

### PROPERTY ADDRESS

My boss's tax bill WALNUT CREEK CA

### ASSESSEE AS OF JANUARY 1, 2012

### MAILING ADDRESS

APN 179-132-004-5

ADDRESS INFORMATION NOT AVAILABLE ON LINE

### ASSESSMENT INFORMATION

LAND	\$300,483
IMPROVEMENTS	\$454,464
PERSONAL PROP	\$0
GROSS VALUE	\$754,947
EXEMPTIONS	\$7,000

THE ACCURACY OF THIS BILL MAY BE AFFECTED BY  
 PENDING PAYMENTS AND CORRECTIONS

NET VALUE AS OF JAN 1, 2012 \$747,947

### SPECIAL MESSAGES

PARCEL NUMBER	BILL NUMBER	CORTAC AGENCY	TAX RATE AREA	ISSUE DATE	TYPE
179-132-004-5 0	2012-181989		09001	09/07/2012	ORIGINAL

SPECIAL TAXES & ASSESSMENTS			
DESCRIPTION	CODE	INFORMATION	AMOUNT
MOSQUITO & VECTOR	DV	(925) 867-3400	\$4.74
EMERGENCY MED B	DY	(925) 646-4690	\$10.00
CCCSD SEWER CHG	GE	(925) 229-7115	\$371.00
WC SCHOOL PRCL TAX	HO	(800) 273-5167	\$82.00
FED STORMWATER A16	IS	(925) 313-2376	\$35.00
ACL MEAS G&A PCLTX	JF	(925) 280-3908	\$301.00
EASTBAY TRAILS LLD	KA	(800) 676-7516	\$5.44
<b>TOTAL SPECIAL TAXES &amp; ASSESSMENTS</b>			<b>\$809.18</b>

AD VALOREM TAXES & ASSESSMENTS		
DESCRIPTION	RATE	AMOUNT
1%COUNTYWIDE TAX	1.0000	\$7,479.47
BART	0.0043	\$32.16
EAST BAY REG PK BD	0.0051	\$38.14
ACALANES BOND 97	0.0112	\$83.77
ACALANES BOND 88	0.0105	\$78.54
ACALANES BOND 2002	0.0116	\$86.76
WLNT CREEK BOND 95	0.0127	\$94.99
WC ELEM BOND 2002	0.0114	\$85.26
COMM COLL 2002 BND	0.0047	\$35.16
COMM COLL 2006 BND	0.0040	\$29.91
TOTAL AD VALOREM TAXES	1.0755	\$8,044.16
ADD: SPECIAL TAXES & ASSESSMENTS		\$809.18
DELINQUENT PENALTY		\$0.00
DELINQUENT COST		\$0.00
LESS: PAYMENTS RECEIVED		\$8,853.34
<b>TOTAL AMOUNT DUE</b>		<b>\$0.00</b>

PARCEL NUMBER	BILL NUMBER	CORTAC AGENCY	TAX RATE AREA	ISSUE DATE	TYPE
---------------	-------------	---------------	---------------	------------	------





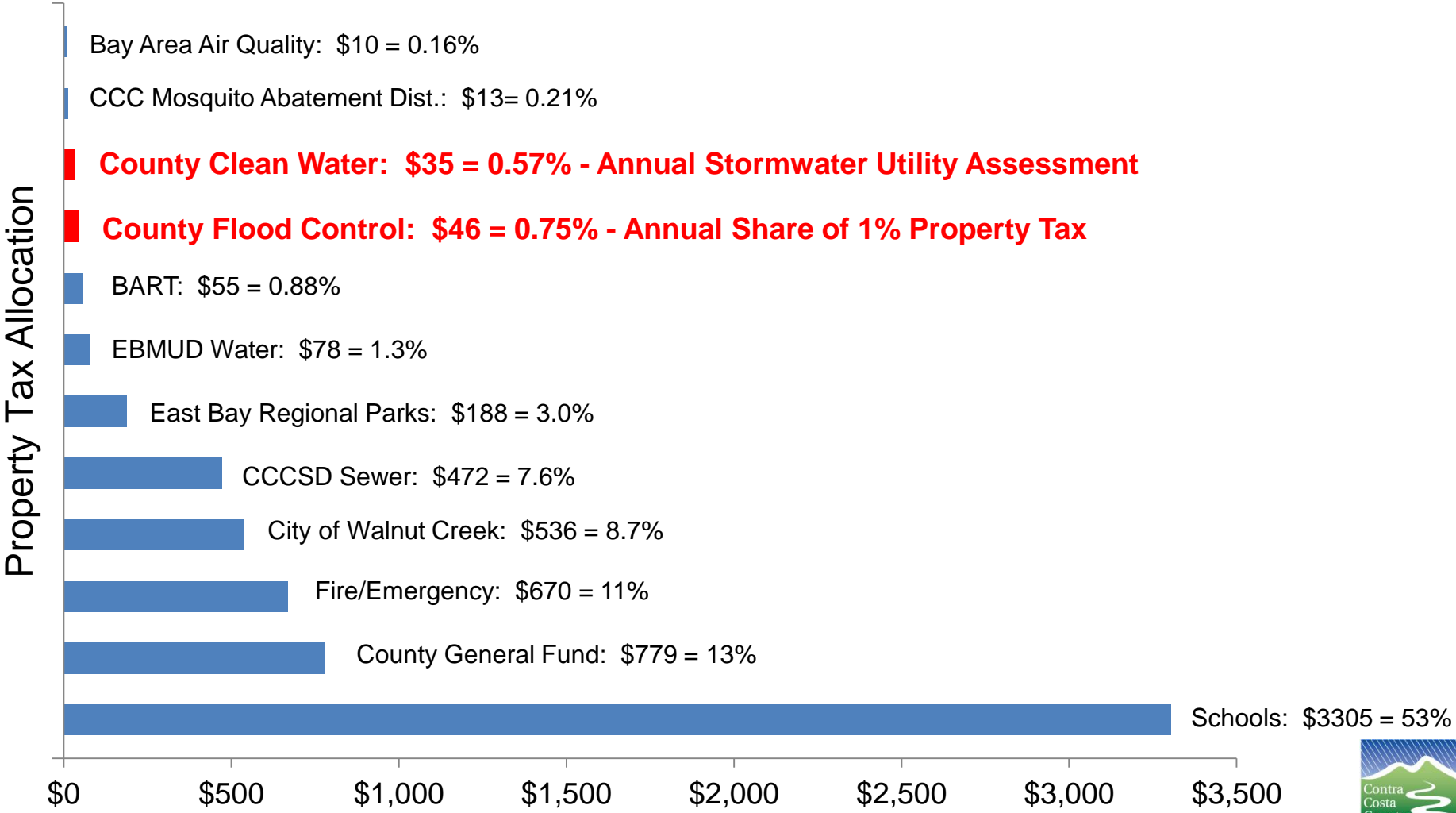
# How We Are Funded

## Tax Rate Area 09001 Allocation of Basic 1% Property Tax Fiscal Year 2012-2013

COUNTY GENERAL	13.90324 %
COUNTY LIBRARY	1.56228 %
CONTRA COSTA FIRE	13.19903 %
C C FLOOD CONTROL	0.18332 %
FLOOD CONTROL Z-3B	0.73965 %
CO WATER AGENCY	0.03733 %
CC RES CONSV	0.01692 %
CO CO MOSQUITO ABA	0.16325 %
CENTRAL SANITARY	2.02693 %
ALAMO LAF CEMETERY	0.06376 %
EAST BAY MUD	1.56951 %
BART	0.66106 %
BAY AREA AIR MGMNT	0.19268 %
EAST BAY REGNL PK	3.14298 %
CITY WALNUT CREEK	9.14025 %
WALNUT CREEK R-8	0.30539 %
ACALANES HIGH	13.43493 %
CANYON ELEM	0.01258 %
LAFAYETTE ELEM	2.08245 %
MORAGA ELEMENTARY	1.29882 %
ORINDA ELEMENTARY	1.57413 %
WALNUT CREEK ELEM	10.95957 %
CO SUPT SCHOOLS	1.89380 %
K-12 SCHOOLS ERAF	14.81412 %
CO CO COMM COLLEGE	4.81622 %
COMM COLLEGE ERAF	2.20580 %
<b>TOTAL</b>	<b>100.00000 %</b>

Tax Rate Area 09001 Fiscal Year 2012-2013 Tax Breakdown Comparison			
<b>Allocation of Basic 1% Property Tax</b>			
CANYON ELEM	0.01%	\$0.63	
CC RES CONSV	0.02%	\$0.85	
CO WATER AGENCY	0.04%	\$1.87	
ALAMO LAF CEMETERY	0.06%	\$3.19	
CO CO MOSQUITO ABA	0.16%	\$8.16	
C C FLOOD CONTROL	0.18%	\$9.17	FCD
BAY AREA AIR MGMNT	0.19%	\$9.63	
WALNUT CREEK R-8	0.31%	\$15.27	
BART	0.66%	\$33.05	
FLOOD CONTROL Z-3B	0.74%	\$36.98	FCZ 3B
MORAGA ELEMENTARY	1.30%	\$64.94	
COUNTY LIBRARY	1.56%	\$78.11	
EAST BAY MUD	1.57%	\$78.48	
ORINDA ELEMENTARY	1.57%	\$78.71	
CO SUPT SCHOOLS	1.89%	\$94.69	
CENTRAL SANITARY	2.03%	\$101.35	
LAFAYETTE ELEM	2.08%	\$104.12	
COMM COLLEGE ERAF	2.21%	\$110.29	
EAST BAY REGNL PK	3.14%	\$157.15	
CO CO COMM COLLEGE	4.82%	\$240.81	
CITY WALNUT CREEK	9.14%	\$457.01	
WALNUT CREEK ELEM	10.96%	\$547.98	
CONTRA COSTA FIRE	13.20%	\$659.95	
ACALANES HIGH	13.43%	\$671.75	
COUNTY GENERAL	13.90%	\$695.16	
K-12 SCHOOLS ERAF	14.81%	\$740.71	
1% Countywide tax total:	100.00%	\$5,000.00	
<b>Other Ad Velorem Taxes</b>			
Community College 2006 Bond	0.004	\$20.00	
BART	0.0043	\$21.50	
Community College 2002 Bond	0.0047	\$23.50	
East Bay Regional Park Bond	0.0051	\$25.50	
ACALANES BOND 88	0.0105	\$52.50	
ACALANES BOND 97	0.0112	\$56.00	
WC ELEM BOND 2002	0.0114	\$57.00	
ACALANES BOND 2002	0.0116	\$58.00	
WLNT CREEK BOND 95	0.0127	\$63.50	
Ad Velorem tax total:	8%	\$377.50	
<b>Special Taxes and Assessments</b>			
MOSQUITO & VECTOR DV		\$4.74	
EASTBAY TRAILS LLD KA		\$5.44	
EMERGENCY MED B DY		\$10.00	
FED STORMWATER A16 IS		\$35.00	
WC SCHOOL PRCL TAX HO		\$82.00	
ACL MEAS G&A PCLTX JF		\$301.00	
CCCSD SEWER CHG GE		\$371.00	
Special Assessment total:		\$809.18	
<b>Grand Total</b>		<b>\$6,186.68</b>	
<b>Ranking Comparison</b>			
Schools total:	1	\$3,304.62	53%
Contra Costa County general funds:	2	\$779.18	13%
Fire/Emergency:	3	\$669.95	11%
City of Walnut Creek total:	4	\$535.78	8.7%
CCCSD total:	5	\$472.35	7.6%
EBRPD total:	6	\$188.09	3.0%
EBMUD total:	7	\$78.48	1.3%
BART:	8	\$54.55	0.88%
FCD total:	9	\$46.15	0.75%
Contra Costa Clean Water:	10	\$35.00	0.57%
CC Mosquito Abatement:	11	\$12.90	0.21%
Bay Area Air Quality:	12	\$9.63	0.16%
Check total:		\$6,186.68	
<b>Notes:</b>			
Home in FCZ 3B assessed value on 1/1/12	\$500,000	\$5,000.00	1% Countywi
Prepared by Tim Jensen, 6/12/13			

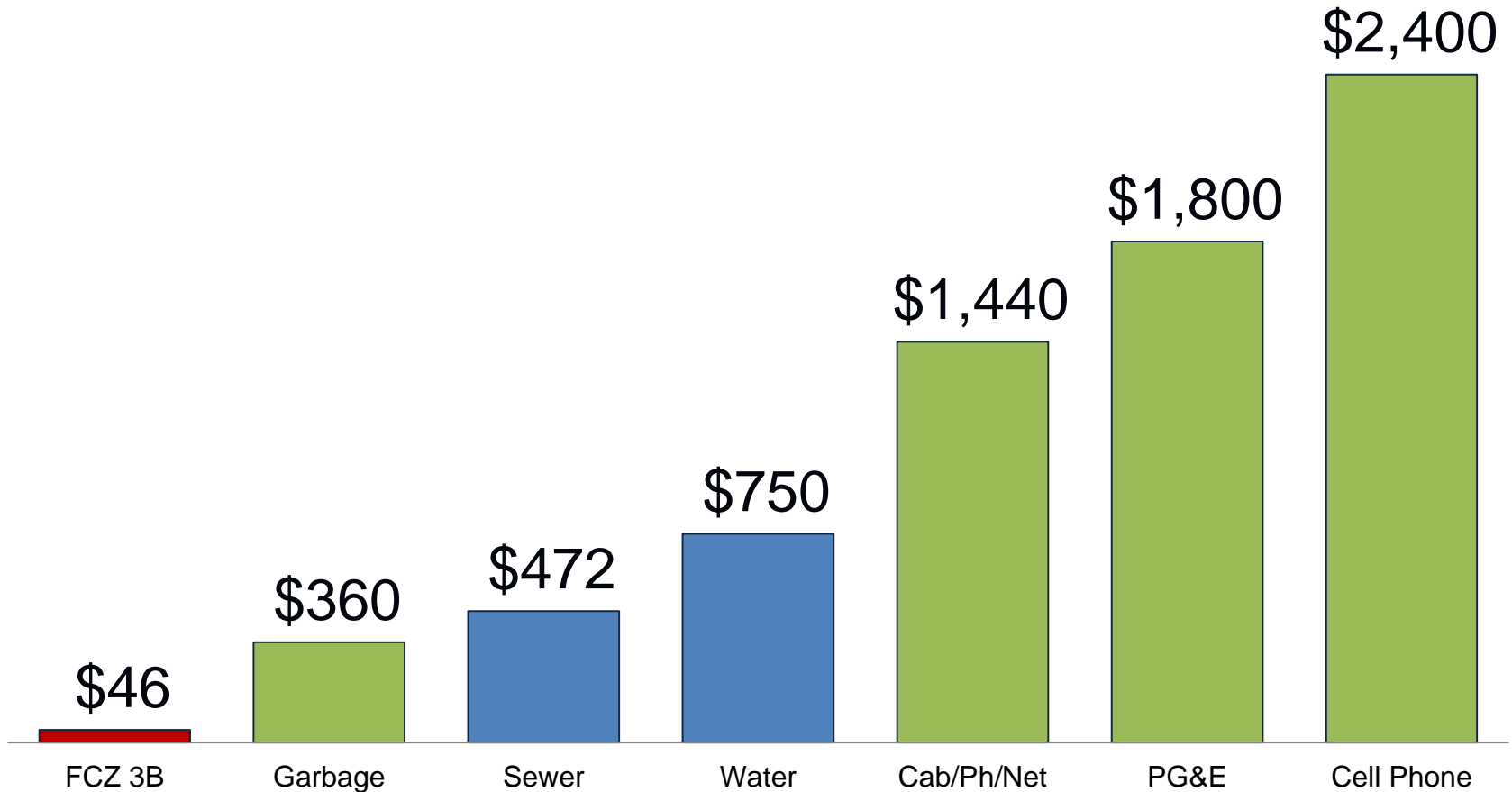
# How We Are Funded



Percent of Entire Tax Bill - Based on \$500,000 home in Walnut Creek

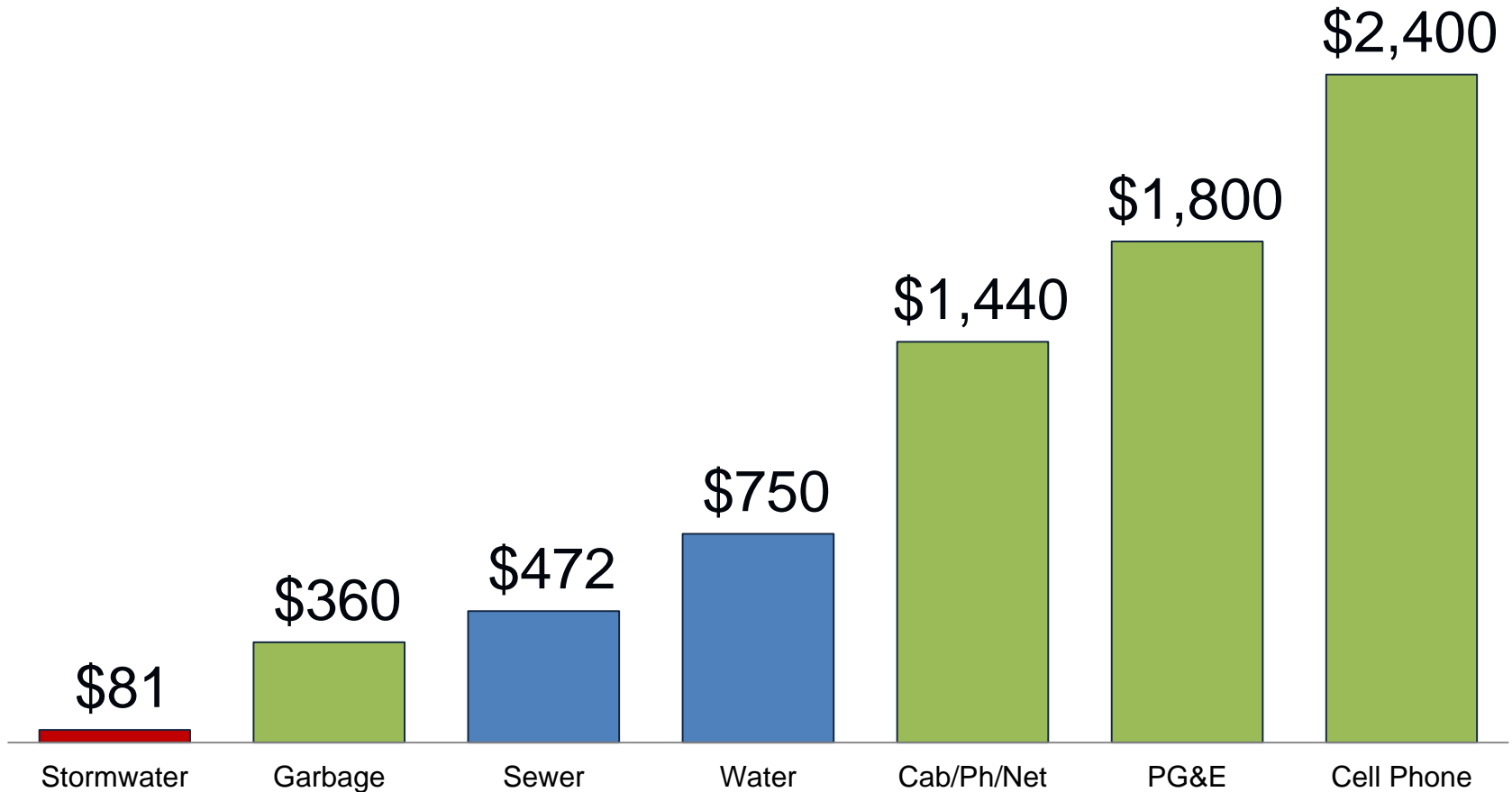


# Society's Investment in Flood Control



*Annual Costs Based on \$500,000 home/family in Walnut Creek*


# Society's Investment in Stormwater



*Annual Costs Based on \$500,000 home/family in Walnut Creek*

# Next Steps



 **Contra Costa County  
Flood Control**  
& Water Conservation District