





Aerial Photo



Legend

-  City Limits
-  Streets
-  Building Outlines
-  Assessment Parcels
- World Imagery
- Low Resolution 15m Imagery
- High Resolution 60cm Imagery
- High Resolution 30cm Imagery
- Citations

0.0 0 0.01 0.0 Miles

WGS_1984_Web_Mercator_Auxiliary_Sphere

This map is a user generated static output from an Internet mapping site and is for reference only. Data layers that appear on this map may or may not be accurate, current, or otherwise reliable.

THIS MAP IS NOT TO BE USED FOR NAVIGATION

1: 564



Notes

CDLP22-02008

General Plan: Parks and Recreation (PR)



Legend

- City Limits
- General Plan**
- SV (Single Family Residential - Ver)
- SL (Single Family Residential - Low)
- SM (Single Family Residential - Me)
- SH (Single Family Residential - Hig)
- ML (Multiple Family Residential - Lc)
- MM (Multiple Family Residential - M)
- MH (Multiple Family Residential - H)
- MV (Multiple Family Residential - Vi)
- MS (Multiple Family Residential - Vi)
- CC (Congregate Care/Senior Housi)
- MO (Mobile Home)
- M-1 (Parker Avenue Mixed Use)
- M-2 (Downtown/Waterfront Rodeo I)
- M-3 (Pleasant Hill BART Mixed Use)
- M-4 (Willow Pass Road Mixed Use)
- M-5 (Willow Pass Road Commercia)
- M-6 (Bay Point Residential Mixed U)
- M-7 (Pittsburg/Bay Point BART Star)
- M-8 (Dougherty Valley Village Cent)
- M-9 (Montalvin Manor Mixed Use)
- M-10 (Willow Pass Business Park M)
- M-11 (Appian Way Mixed Use)
- M-12 (Triangle Area Mixed Use)
- M-13 (San Pablo Dam Road Mixed)
- M-14 (Heritage Mixed Use)
- CO (Commercial)
- OF (Office)
- BP (Business Park)
- LI (Light Industry)
- HI (Heavy Industry)
- AL, OIBA (Agricultural Lands & Off
- CR (Commercial Recreation)
- ACO (Airport Commercial)
- LF (Landfill)
- PS (Public/Semi-Public)
- PR (Parks and Recreation)
- OS (Open Space)

1:4,514



0.1 0 0.07 0.1 Miles

WGS_1984_Web_Mercator_Auxiliary_Sphere

This map is a user generated static output from an Internet mapping site and is for reference only. Data layers that appear on this map may or may not be accurate, current, or otherwise reliable.

THIS MAP IS NOT TO BE USED FOR NAVIGATION

Notes

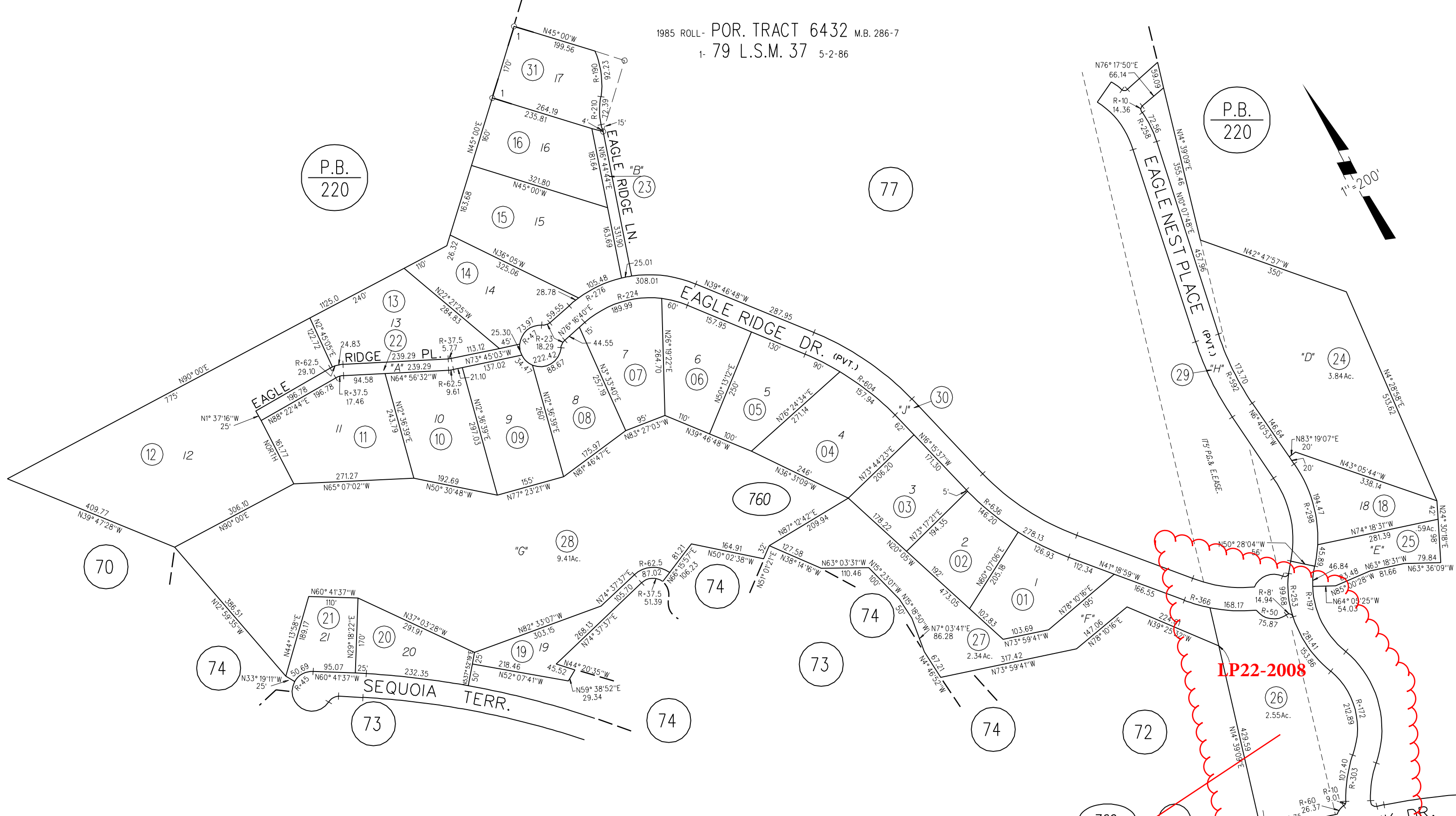
CDLP22-02008

1985 ROLL - POR. TRACT 6432 M.B. 286-7
1-79 L.S.M. 37 5-2-86

P.B.
220

P.B.
220

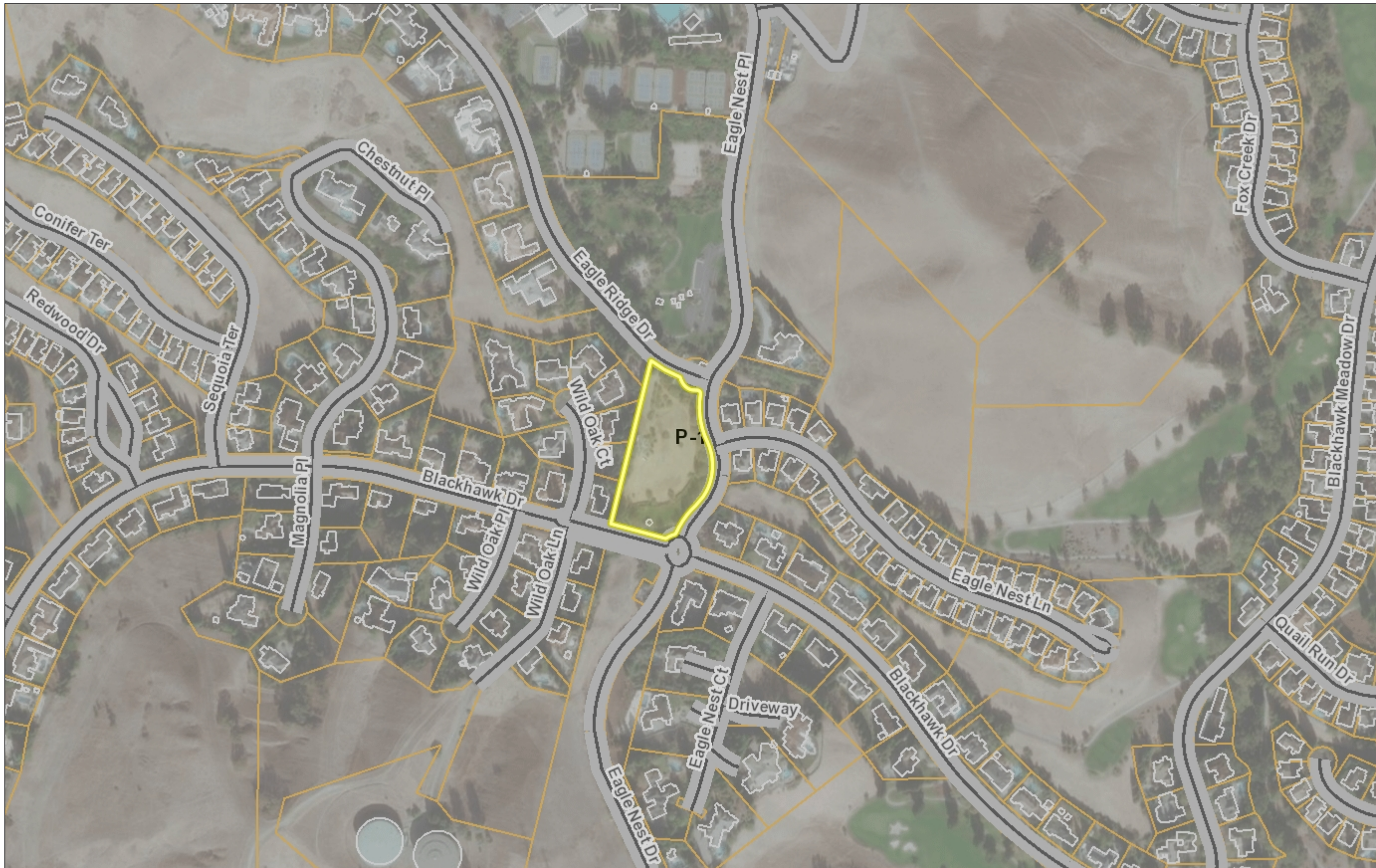
1"=200'



760
AT&T WM18-0037
LP08-2065
DP05-3059
Metro PCS DP05-3022
CV12-0082

LP22-2008
M.205-8,70,74 & 220-11,12 2-1-85
ASSESSOR'S MAP
BOOK 203 PAGE 76
CONTRA COSTA COUNTY,CALIF.

Zoning: Planned Unit District (P-1)



Legend

- City Limits
- Zoning**
- R-6 (Single Family Residential)
- R-6, -FH -UE (Flood Hazard and A
- R-6 -SD-1 (Slope Density Hillside I
- R-6 -TOV -K (Tree Obstruction anc
- R-6, -UE (Urban Farm Animal Excl
- R-6 -X (Railroad Corridor Combinir
- R-7 (Single Family Residential)
- R-7 -X (Railroad Corridor Combinir
- R-10 (Single Family Residential)
- R-10, -UE (Urban Farm Animal Exc
- R-12 (Single Family Residential)
- R-15 (Single Family Residential)
- R-20 (Single Family Residential)
- R-20, -UE (Urban Farm Animal Exc
- R-40 (Single Family Residential)
- R-40, -FH -UE (Flood Hazard and A
- R-40, -UE (Urban Farm Animal Exc
- R-65 (Single Family Residential)
- R-100 (Single Family Residential)
- D-1 (Two Family Residential)
- D-1 -T (Transitional Combining Dist
- D-1, -UE (Urban Farm Animal Excl
- M-12 (Multiple Family Residential)
- M-12 -FH (Flood Hazard Combining
- M-17 (Multiple Family Residential)
- M-29 (Multiple Family Residential)
- F-R (Forestry Recreational)
- F-R -FH (Flood Hazard Combining I
- F-1 (Water Recreational)
- F-1 -FH (Flood Hazard Combining I
- A-2 (General Agriculture)
- A-2, -BS (Boat Storage Combining I
- A-2, -BS -SG (Boat Storage and So
- A-2 -FH (Flood Hazard Combining I
- A-2, -FH -SG (Flood Hazard and Sc
- A-2 -SD-1 (Slope Density Hillside D
- A-2, -SG (Solar Energy Generation

1:4,514



0.1 0 0.07 0.1 Miles

WGS_1984_Web_Mercator_Auxiliary_Sphere

This map is a user generated static output from an Internet mapping site and is for reference only. Data layers that appear on this map may or may not be accurate, current, or otherwise reliable.

THIS MAP IS NOT TO BE USED FOR NAVIGATION

Notes

CDLP22-02008