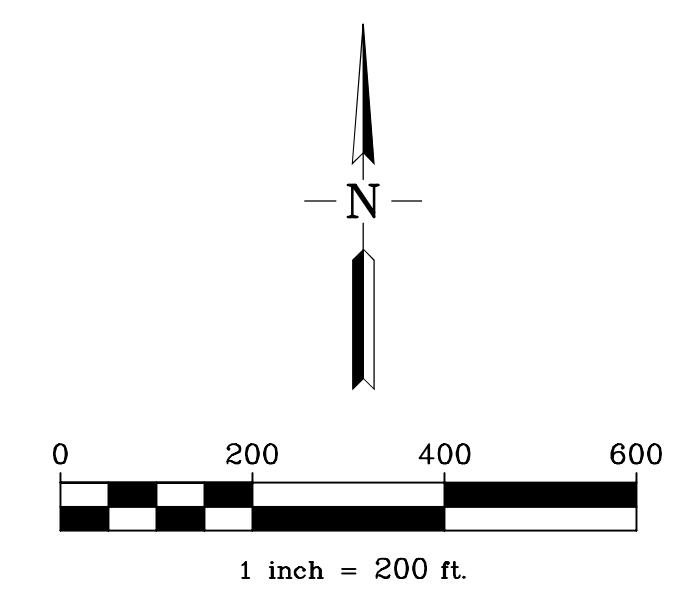


LEGEND:

- 1 LOT BEING TRANSFERRED TO PARCEL C
- 2 LOTS BEING TRANSFERRED TO PARCEL C
- 2 LOTS FROM PARCELS B AND E BEING TRANSFERRED TO PARCEL C

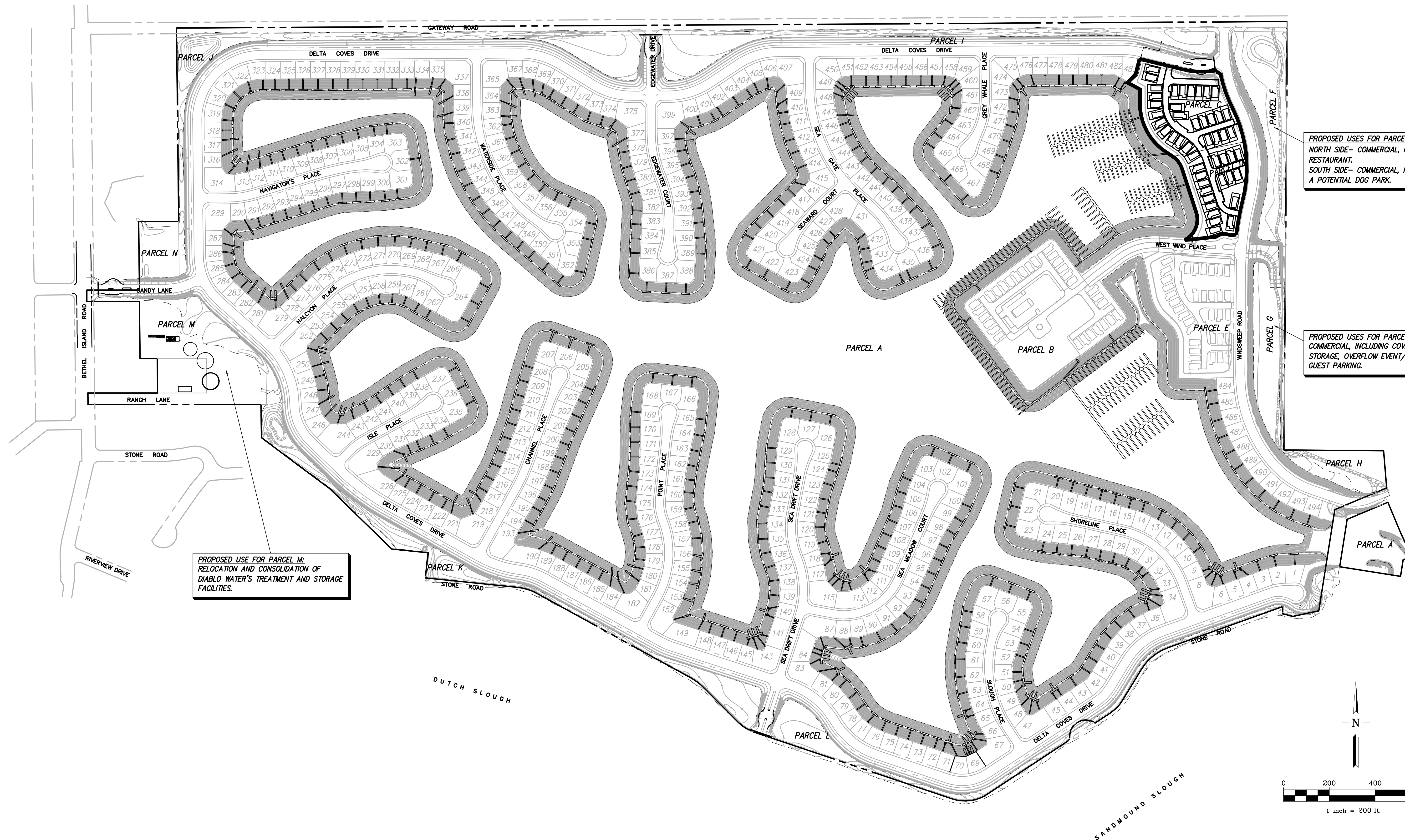
35 TOTAL LOTS BEING TRANSFERRED TO PARCEL C



LOTS TRANSFERRED TO PARCEL C PLAN SUB 6013 - DELTA COVES

CONTRA COSTA COUNTY, CALIFORNIA
FOR: SDC DELTA COVES

RJA
RUGGERI-JENSEN-AZAR
ENGINEERS • PLANNERS • SURVEYORS
4690 CHABOT DRIVE, SUITE 200 PLEASANTON, CA 94588
PHONE: (925) 227-9100 FAX: (925) 227-9300
REVISED: JANUARY 13, 2020
DATE: DECEMBER 4, 2019 JOB NO. 131019 SHEET C-1



PROPOSED USES FOR PARCEL F:
 NORTH SIDE- COMMERCIAL, RETAIL AND/OR RESTAURANT.
 SOUTH SIDE- COMMERCIAL, INCLUDING PARKING, A POTENTIAL DOG PARK.

PROPOSED USES FOR PARCEL G:
 COMMERCIAL, INCLUDING COVERED OR OPEN STORAGE, OVERFLOW EVENT/ DELTA COVES GUEST PARKING.

PROPOSED USE FOR PARCEL M:
 RELOCATION AND CONSOLIDATION OF DIABLO WATER'S TREATMENT AND STORAGE FACILITIES.

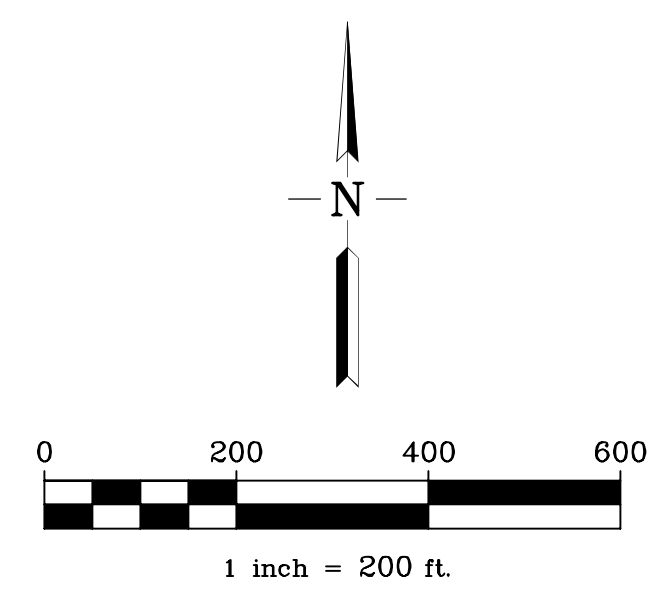


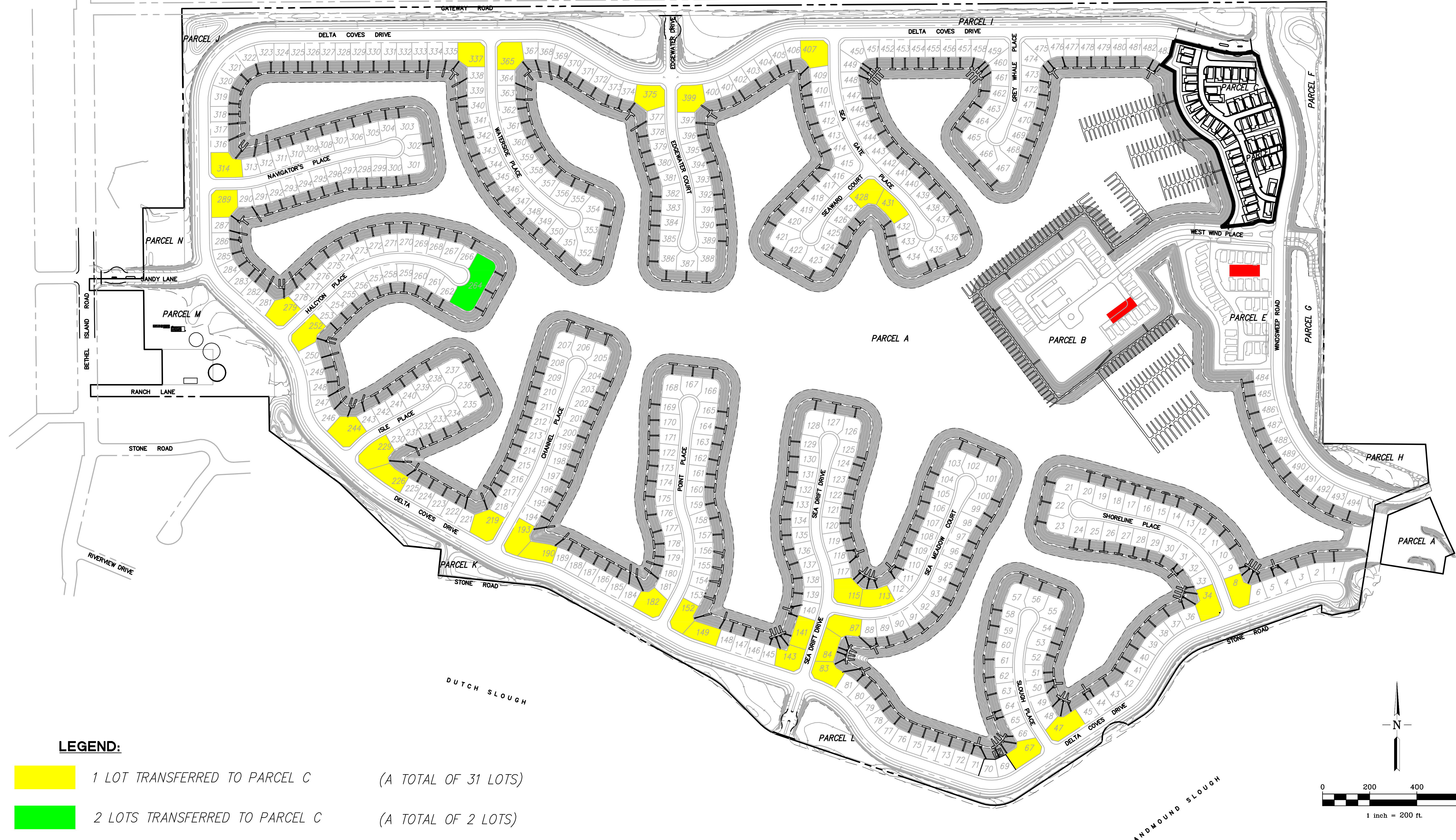
EXHIBIT A - REQUESTED GENERAL PLAN USES AND FUTURE SITE USES

DELTA COVES

BETHEL ISLAND, CONTRA COSTA COUNTY, CALIFORNIA
 FOR: SDC DELTA COVES

RJA
RUGGERI-JENSEN-AZAR
 ENGINEERS • PLANNERS • SURVEYORS
 4690 CHABOT DRIVE, SUITE 200 PLEASANTON, CA 94588
 PHONE: (925) 227-9100 FAX: (925) 227-9300

© 2022 RJA ENGINEERS, PLANNERS & SURVEYORS. ALL RIGHTS RESERVED. EXHIBIT A - REQUESTED GENERAL PLAN USES AND FUTURE SITE USES. DATE: 9/7/2022, 3:23:26 PM. MLL



LEGEND:

- 1 LOT TRANSFERRED TO PARCEL C (A TOTAL OF 31 LOTS)
- 2 LOTS TRANSFERRED TO PARCEL C (A TOTAL OF 2 LOTS)
- 2 LOTS FROM PARCELS B & E TRANSFERRED TO PARCEL C (A TOTAL OF 2 LOTS)

35 TOTAL LOTS
TRANSFERRED TO PARCEL C

EXHIBIT A - LOTS TRANSFERRED TO PARCEL C PLAN SUB 6013 - DELTA COVES

BETHEL ISLAND, CONTRA COSTA COUNTY, CALIFORNIA
FOR: SDC DELTA COVES

