

Contra Costa Health Services

Presentation to Contra Costa County
Sustainability Committee

Human Influenced Climate Change

July 11th, 2022

Daniel Peddycord RN, MPA/HA
Chief Climate & Health Policy Officer



Human Health Impacts of Climate Change

Environmental Degradation
Forced migration, civil conflict, mental health impacts, loss of jobs and income

Extreme Heat
Heat-related illness and death, cardiovascular failure

Severe Weather
Injuries, fatalities, loss of homes, mental health impacts

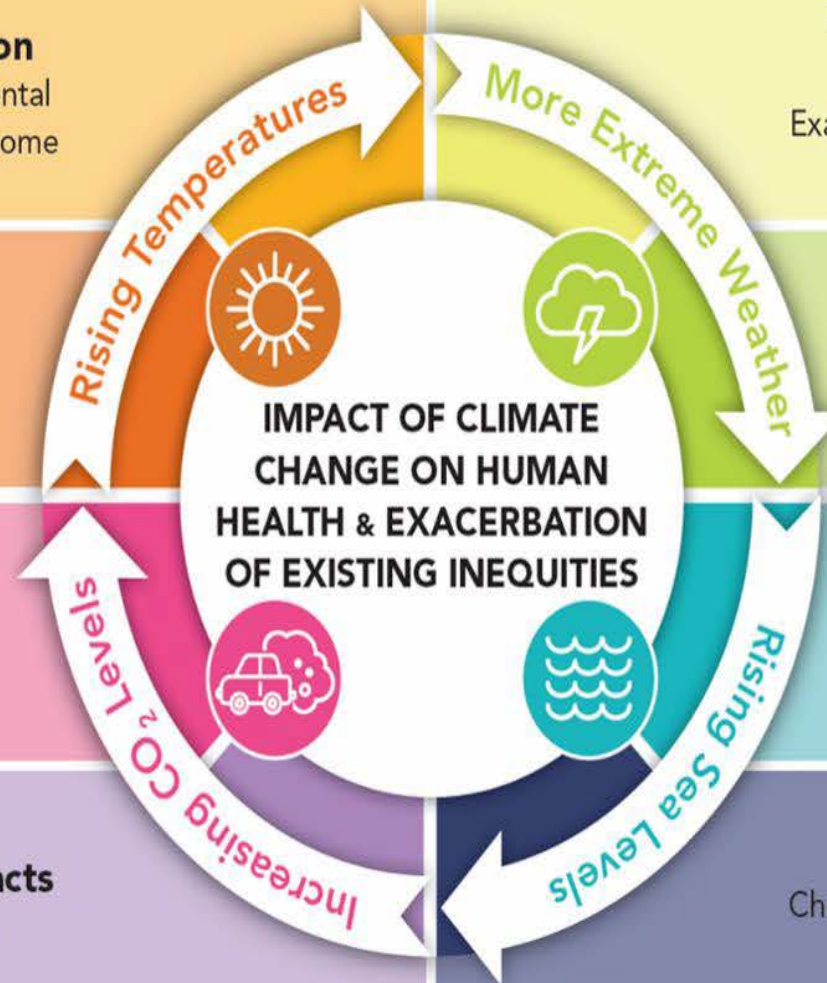
Water & Food Supply Impacts
Malnutrition, diarrheal disease

Degraded Living Conditions & Social Inequities
Exacerbation of existing social and health inequities and vulnerabilities

Changes In Vector Ecology
Malaria, dengue, encephalitis, hantavirus, Rift Valley fever, Lyme disease, chikungunya, West Nile virus

Air Pollution & Increasing Allergens
Asthma, cardiovascular disease, respiratory allergies

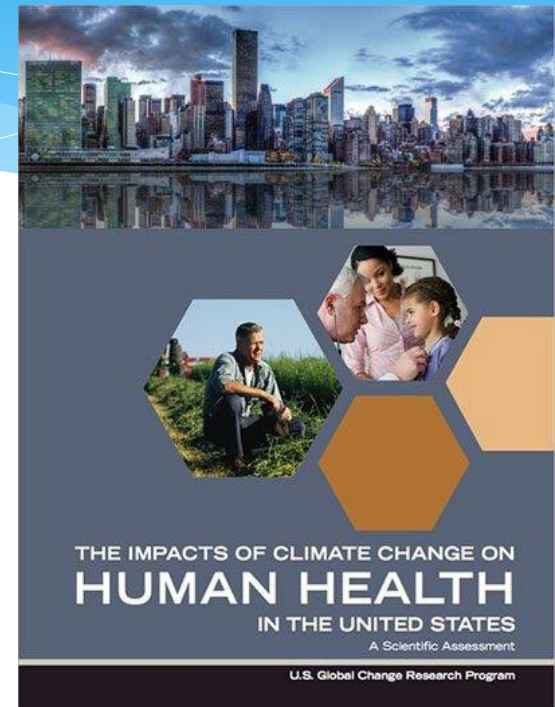
Water Quality Impacts
Cholera, cryptosporidiosis, Campylobacter, leptospirosis, harmful algal blooms



Adapted from CDC, J. Patz

2016 Climate and Health Assessment

- Written by a large team of ~100 experts including from authors from eight U.S. Federal agencies: HHS (NIH, CDC, NIOSH, ASPR, FDA, SAMHSA), NOAA, EPA, USDA, NASA, USGS, DOD (USUHS), VA
- Robust review process: Synthesizes a large body of scientific peer-reviewed research, extensively reviewed by the public and experts, including a review committee of the National Academies of Sciences and approved by the 13 Federal agencies of the USGCRP + White House
- Transparent and accessible: Multiple opportunities for public engagement during development, documentation of process, outreach after publication



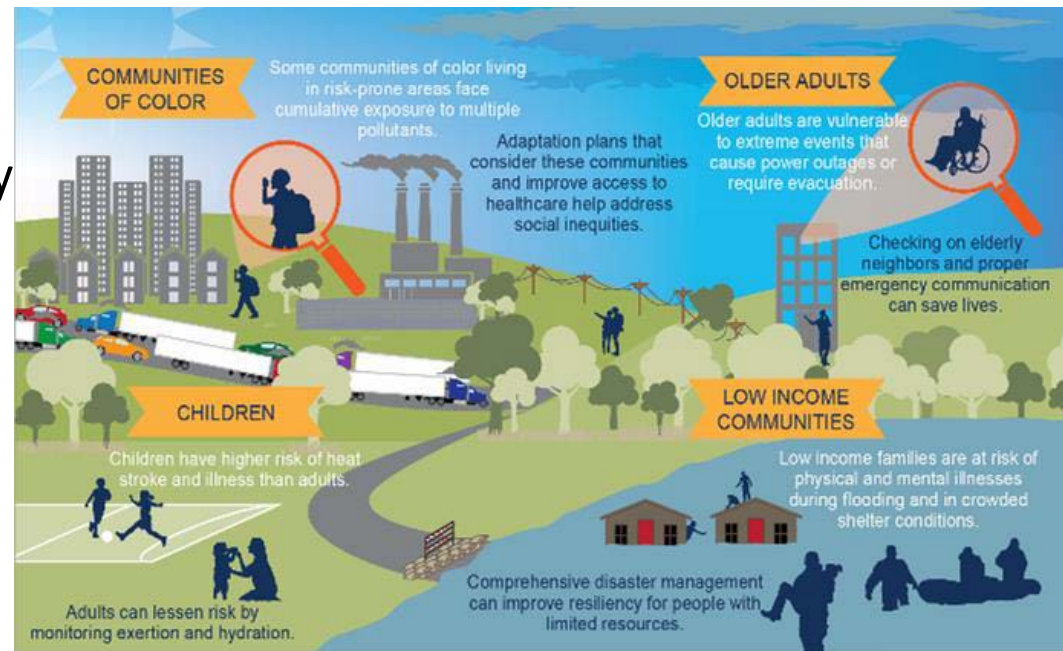
Health2016.globalchange.gov

14

Key Message – Climate Change will drive Health Inequity

Exposure and Resilience Vary Across Populations and Communities

People and communities are differentially exposed to hazards and disproportionately affected by climate-related health risks. **Populations experiencing greater health risks include children, older adults, low-income communities, and some communities of color.**



A few of the things CCHS is doing

- * Making climate change and its impacts a **CCHS Priority**
- * **Green & Healthy Homes Initiative** – Weatherization(DCD) and In-home Asthma Triggers (CCHP, CCRMC, PH)
- * CCHS Houses the **County Green Business Plan** in the Hazardous Materials Division.
- * Haz Mat Assessment of **Sea Level Rise Threat** to local industry.
- * 2020 CCHS **Excessive Heat Response Plan**
- * 2019 CCHS **Wildfire Smoke** Response Plan
- * CCRMC Facilities offered as “**Resiliency Center**” 2019-20 PSPS Events
- * 2020-22 CCHS Input & metrics to Revised **County General Plan**
- * 2020-22 CCHS Input to **County Climate Action Plan**
- * A number of CCRMC Facilities have **achieved LEED Silver Certification**
- * Participation on **Interdepartmental Climate Action Task Force**.
- * Leading on **AB 836 – Clean Air Centers** for vulnerable populations
- * **Distributing KN-95 mask** for wildfire smoke protection.

And CCRMC has.....

* Joined “Practice Green Health”

- * The leading sector focused, membership organization, that helps support health organizations in their efforts to reduce their own contribution to GHG emission. From sustainable procurement to reducing energy, water and waste, etc.
- * A close partner with Health Care Without Harm

- * *The **health care industry** is one of the most carbon-intensive service sectors in the industrialized world. It is responsible for 4.4–4.6 percent of worldwide greenhouse gas emissions and roughly **10 percent of US GHG emissions.** –*
<https://www.healthaffairs.org/doi/10.1377/hlthaff.2020.01247>

Our Climate Agenda Includes

- * **Building a CCHS Climate Action Plan** – as a compliment to the County CAP anchored in **Equity and Environmental Justice**.
- * Projecting and **detailing the local impact** on populations and communities **most at risk** & connecting that to our **“equity”** work.
- * **Advocating for Health, EQUITY and climate in all policies:** Policy & action at the State & Local Level that mitigates climate impacts to persons and communities that are most vulnerable.
- * Working a **Green Business Plan for CCHS**.
- * **Support Carbon Sequestration** – the companion to GHG reduction.
- * Elevating **community voice** in this urgent global public health issue and **partnering to advance community resiliency**.
- * Understanding how climate change is and will continue to **impact the biodiversity of the planet...** both land and sea...and how that will impact human health, disease vectors and the natural cycle of carbon exchange.