

How to Use the General Plan

Goal Numbering: Each goal number starts with the element acronym and is followed by the number of the goal (e.g., SC-8 = Stronger Communities Element, eighth goal).

Goals: A goal describes the general desired result sought by the County. Each goal has one or more policies and/or actions associated with the goal.

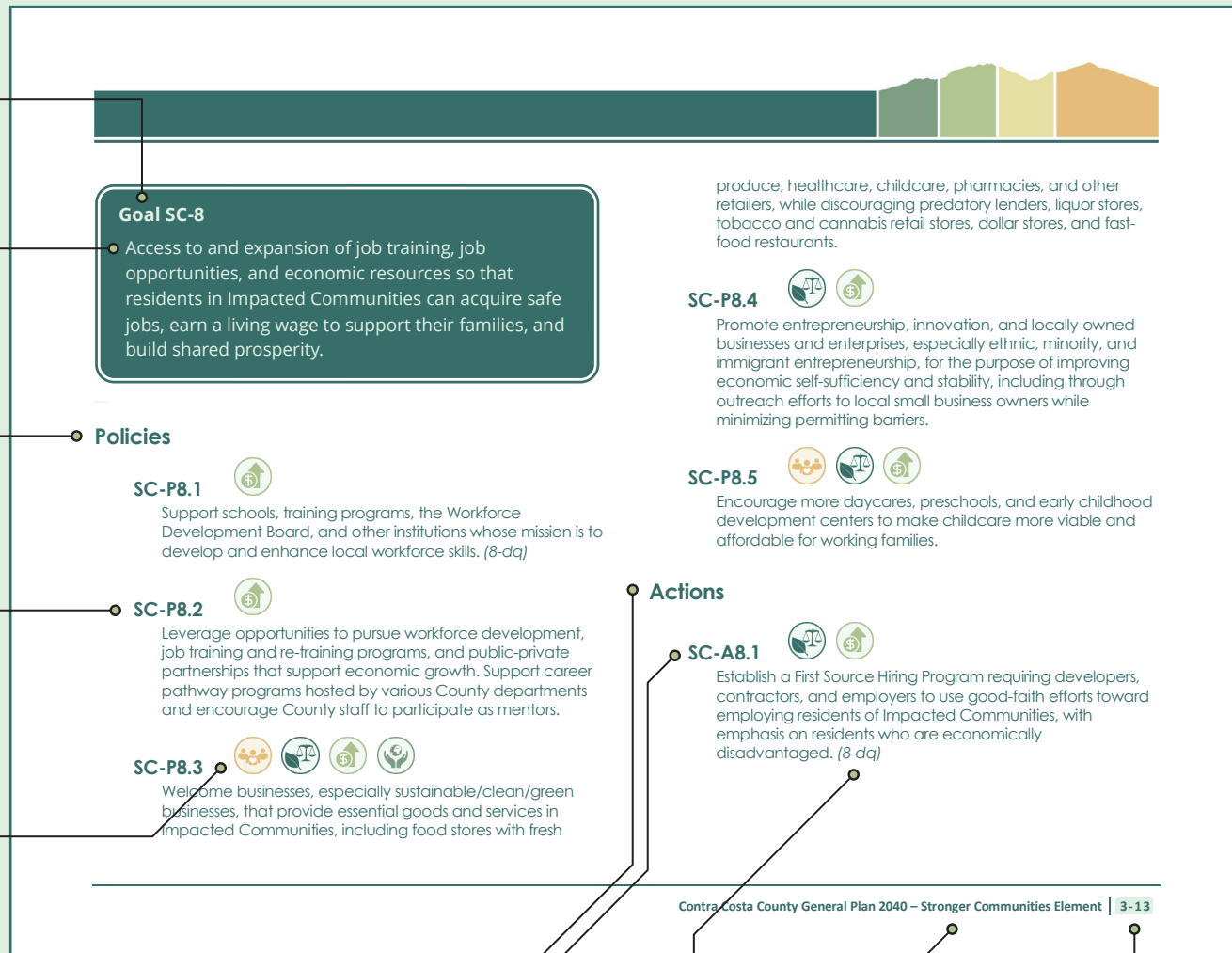
Policies: A policy is a specific statement that guides decision-making as the County works to achieve a specific goal. Policies represent statements of County regulation and set the standards used by decision-makers when considering proposed development and actions. These are on-going and require no further action.

Policy Numbering: The policy number is shown as the last number, supporting the goal it follows (e.g., SC-P8.2 = Stronger Communities Element, eighth goal, second policy). Policy numbers are not tied to action numbers.

Icons: Policies and actions related to the four themes of the General Plan – community health, environmental justice, economic development, and sustainability – are identified using these icons.

Actions: An action is a measure, procedure, or technique that helps the County achieve a specific goal. An action is something concrete that can and will be completed.

Action Numbering: The action number is shown as the last number, supporting the goal it follows (e.g., SC-A8.1 = Stronger Communities Element, eighth goal, first action). Action numbers are not tied to policy numbers.



Parenthetical Reference: These refer either to legislation (e.g., Assembly Bill [AB] 52) or goals, policies, and implementation measures in the existing General Plan that are somehow being carried forward in the General Plan. Existing goals are indicated by a number and capital letter (e.g., 3-A), existing policies are indicated by two numbers (e.g., 3-1), and existing implementation measures are indicated by a number and lower-case letter (e.g., 3-a). In most cases it is the concept or subject matter, not the actual wording, that is carried forward in the updated General Plan.

Page Numbering: Shows the chapter and page number (e.g., 3-13 = Chapter 3, page 13).

Section Footer: Identifies the element title.

3

STRONGER COMMUNITIES ELEMENT

NOTES FOR ALL ELEMENTS

The General Plan will call out policies and actions that address specific topics of concern raised by the community. For the reader’s ease, policies and actions related to these topics of concern are identified throughout the General Plan using the following icons. The policies and actions related to each topic will be compiled in an appendix to the General Plan.



Community Health



Environmental Justice



Economic Development



Sustainability

In addition, the draft policy guidance uses the term “Impacted Community” to identify what are called “disadvantaged communities” under Senate Bill (SB) 1000. SB 1000 defines these communities as low-income areas that are disproportionately affected by environmental pollution and other hazards that can lead to negative health effects, exposure, or environmental degradation.

Goals, Policies, and Actions

A. ENVIRONMENTAL JUSTICE

Goal SC-1

Equitable distribution of social and economic resources among all communities in the county so that Impacted Communities are not disproportionately burdened by environmental pollution or other hazards. *(EJ SC-1)*

Policies

SC-P1.1



In coordination partnership with residents of Impacted Communities, affected workers, business/industry, environmental and environmental justice stakeholders advocates, community colleges, workforce development and training entities, local government, and other appropriate agencies, support transition from



petroleum refining and other highly polluting industries to renewable and sustainable industries that provide living-wage jobs. (EJ SC-P1.1)

~~community groups. Provide streamlined and timely processing of permits~~ and assist applicants through the permit process. (EJ SC-A1.9)

SC-P1.2



~~Incentivize and s~~streamline the permitting process for ~~public and private investment in~~ new development, redevelopment, and rehabilitation that promotes community goals/objectives in Impacted Communities, as identified in the ~~e~~Community ~~p~~Profiles. (EJ SC-P1.2)

SC-P1.6



For projects negatively affecting an Impacted Community, ~~pursue support~~ community benefits agreements (CBAs) negotiated with the community and project applicant. The primary objective of these CBAs is to mitigate project impacts to the greatest extent possible, which could include mitigations exceeding the requirements of CEQA. Secondly, to compensate for impacts that cannot be fully mitigated, these CBAs should secure community benefits that exceed ~~the~~ inherent project benefits and support the community goals/objectives identified in the ~~e~~Community ~~p~~Profile. Neighborhood-serving retail uses that fill critical needs are exempt from this policy. (EJ SC-P1.5)

SC-P1.3



Support development of ~~small scale walking~~walkable districts that provide a range of neighborhood-serving retail and service uses, public amenities, ~~services~~, and related infrastructure to residents of Impacted Communities within walking distance of their homes. (EJ SC-P1.3)

SC-P1.7



Ensure the ongoing staffing, funding, and other resource needs of the Office of Racial Equity and Social Justice are adequately met to allow fulfillment of its mission and further the County's environmental justice goals.

SC-P1.4



Support cultural and community-driven events, such as art festivals, farmers' markets, and community service days, that support social connections, neighborhood identity, and environmental stewardship. (EJ SC-P1.4)

Actions

SC-P1.5



~~Establish/Maintain~~ a streamlined process to permit and facilitate partial and ~~/or~~ temporary street closures for community-driven amenities and activities, such as parklets, farmers' markets, arts and cultural events, and outdoor dining or other community-driven, events initiated by

SC-A1.1



~~In coordination with residents of Impacted Communities, workers, business/industry, environmental and environmental justice stakeholders, community colleges, workforce~~

development and training entities, local government, and other appropriate agencies. Partner with the stakeholders identified in Policy SC-P1.1 to develop and implement a plan to transition from petroleum-refining and other highly polluting industries to renewable, ~~and~~ sustainable, ~~and~~ clean industries that ~~offer~~ provide living-wage jobs. The plan should address site remediation responsibilities along with timelines and strategies to improve ~~the~~ health, safety, infrastructure, job opportunities, and revenue opportunities during the transition toward a net-zero-emission economy, paying special attention to ~~helping~~ developing new opportunities for ~~low~~ Impacted Communities ~~will to~~ realize economic, health, educational, and other benefits. (EJ SC-A1.1)

SC-A1.2



~~With input from residents of Impacted Communities, amend Title 8 of the County Ordinance Code to create an Impacted Communities Overlay Zone that applies to areas within and adjacent to Impacted Communities and establishes requirements for discretionary permits for non-residential developments of 25,000 square feet or more. The overlay zone will include additional required project findings that promote environmental justice and health. Projects able to satisfy the required findings will~~To support the findings necessary to approve large-scale developments in or adjacent to Impacted Communities require applicants for such projects to submit documentation demonstrating how the project will promote environmental justice and health, including how the project will ensure the following:

- ~~(a)~~ It will not adversely impact the community;
- ~~(b)~~ (a) _____ It will provide benefits that support the community ~~goals~~ objectives, such as those identified

in the eCommunity pProfile or otherwise expressed by the community.;

- ~~(c)~~ (b) _____ It will provide economic opportunities/benefits for the community.;
- ~~(c)~~ It will neither directly nor indirectly cause/Avoid unwelcome permanent displacement of existing residents or businesses in the community.;
- ~~(d)~~ Support community resiliency. ; ~~and~~
- ~~(e)~~ It will avoid direct and indirect negative/Positively impacts on health and the quality of life of residents within the community.

~~As part of the process to develop this ordinance, create guidance for demonstrating consistency with these findings.~~ (EJ SC-P1.6)

SC-A1.3

~~With input from residents of Impacted Communities, develop criteria to be used in the project review process to evaluate how new development supports the County's environmental justice and health goals and the environmental justice and health related community goals identified in the applicable community profile.~~ (EJ SC-A1.2)

SC-A1.4 SC-A1.3



Revise the Industrial Safety Ordinance to:

- ~~(a)~~ (a) _____ It will increase the hazard scores for projects with potential to adversely affect Impacted Communities to ensure more projects are subject to discretionary review.



~~(b) , as well as a~~ Address ambiguities and antiquated terminology that complicate administration of the ordinance.

~~(c) Require preparation of a plan to prevent and remediate any contaminant releases, along with bonds that guarantee remediation plans are implemented, for projects in areas subject to sea-level rise or tsunami inundation.~~ (EJ SC-A1.3)

~~the effectiveness of the County's environmental justice policies and actions and include these in the report.~~ (EJ SC-A1.5)

SC-A1.5



~~Study the feasibility of implementing an amortization process to eliminate non-conforming land uses.~~

SC-A1.6



Upon each review of the General Plan ~~[see Land Use Element Action LU-A##]~~, review health outcomes data for Impacted Communities ~~, and assess any updated information related to the delineation of Impacted Communities in Contra Costa County.~~ ~~Based on these reviews, u~~ Update the map of Impacted Communities (Figure SC-X) and environmental justice-related goals, policies, and actions accordingly. (EJ SC-A1.4)

SC-A1.7



As part of the annual General Plan ~~annual~~-progress report to the Board of Supervisors, describe specific efforts to implement the General Plan policies and actions related to environmental justice, highlighting efforts in each Impacted Community. Post this report in a visible location on the County website. ~~Develop metrics/indicators for evaluating~~

SC-A1.8



Submit a report to the Board of Supervisors on the feasibility of creating ~~and/or~~ participating in public-private partnerships, community land trusts, and other types of economic development and wealth-building tools to support local interests, ~~and~~ community development, ~~and in Impacted Communities.~~ In collaboration with nonprofit and for-profit developers, study the feasibility of establishing community land trusts and supporting existing community land trusts serving all Impacted Communities, that will support long-term community ownership and housing affordability in Impacted Communities. (EJ SC-1.6, EJ SC-A4.2)

SC-A1.9



Establish a process for the County to assist with obtaining easily accessed financial support, such as ~~mini~~ grants, for community-based organizations or public-private partners to support physical improvements in Impacted Communities, such as murals, vegetative buffers, and planting strips. (EJ SC-A1.7)

SC-A1.10



Dedicate staff in appropriate departments to assist applicants from Impacted Communities in navigating the project application and review process for projects in ~~Impacted Communities~~ their communities. (EJ SC-A1.10)

See the Land Use Element for policies on disadvantaged unincorporated communities pursuant to Senate Bill (SB) 244.

B. COMMUNITY HEALTH

B2. Health Services

Goal SC-3

Convenient access to comprehensive, co-located health services so ~~all residents of Impacted Communities~~ can find the physical and behavioral health care services they need. (EJ SC-2)

Actions

SC-A3.1



~~Collaborate with non-profit partners to Welcome~~ establishment of medical clinics, behavioral health facilities, and pharmacies in Impacted Communities. (EJ SC-A2. 1)

SC-A3.2



Streamline zoning requirements for healthcare facilities to reduce barriers to their establishment in Impacted Communities. (EJ SC-A2.2)

B3. Healthy Food

Goal SC-4

Support and expand small-scale food production and urban agriculture in ~~the county's~~ urban areas, including growing, processing, and distributing fresh food. (3-194)

Policies

SC-P4.4



Encourage all new residential development to incorporate community gardens into the project design and require incorporation of community gardens for projects that meet the criteria established through Action SC-A4.2. (EJ SC-P3.3)



Actions

SC-A4.1



~~Adopt guidelines to support implementation and program management of micro-agriculture, rooftop gardens, community gardens, and urban farms. Amend Title 8 of the County Ordinance Code to include an urban agriculture ordinance that addresses the following:~~

- ~~(a) Zoning districts where urban agriculture is allowed.~~
- ~~(b) Permitting requirements.~~
- ~~(c) Development and performance standards.~~
- ~~(d) Environmentally safe and sustainable practices.~~
- ~~(e) Sale of crops and/or cottage foods.~~
- ~~(f) Animal husbandry.~~
- ~~(g) Disposal of food waste and agricultural byproducts.~~

~~(3-195) (EJ SC-A3.3)~~

SC-A4.2



Amend the County Ordinance Code to add a requirement for certain projects to incorporate community gardens into the project design. As part of this process, identify a threshold for ~~when triggering~~ this requirement ~~would be triggered~~, considering project type, size, and location, and establish standards for garden size and design. Consider the unique needs of Impacted Communities when developing these amendments/regulations.

Goal SC-5

Convenient access to fresh, healthy, and affordable food in Impacted Communities. (EJ SC-3)

Policies

SC-P5.1



Increase access to fresh food in Impacted Communities by ~~allowing and encouraging grocery stores, and safe local food production, microurban~~ agriculture, ~~edible landscapes, rooftop gardens, community gardens, urban farms, farmers' markets, food trucks, and community neighborhood~~ kitchens on vacant or underutilized lands, ~~including County-owned land, to the extent legally permissible and provided that funding is available. Treat such uses as community benefits in and of themselves.~~ (EJ SC-P3.1)

SC-P5.2



Maximize multimodal access to fresh food in Impacted Communities, prioritizing bicyclemicro-mobility and pedestrian access, by encouraging grocery stores, healthy corner stores, community gardens, and outdoor markets at key transit nodes and within transit-oriented developments. (EJ SC-P3.2)



SC-P5.3



Provide temporary, ~~and/or possibly permanent,~~ access to County ~~locations~~facilities and land in Impacted Communities for farmers' markets and community gardens. (EJ SC-P3.4)

implementation of this ordinance, set up and maintain a shared data system between the Health Services and Conservation and Development departments that identifies the location of current establishments, along with information about public safety and health. (EJ SC-A3.5)

Actions

SC-A5.1



Inventory and map food deserts in the county. As part of the inventory, account for walking, ~~biking~~micro-mobility, and transit access. (EJ SC-A3.1)

SC-A5.5



Study the feasibility of restricting fast food restaurants near schools, parks, and other places where children normally gather. (EJ SC-A3.4)

C. HEALTHY HOMES

SC-A5.2



Update the Zoning County Ordinance Code to streamline permitting of grocery stores and markets, ~~including co-ops,~~ in Impacted Communities and food deserts. (EJ SC-A3.2)

Goal SC-6

Universal Access to safe and sanitary homes in Impacted Communities. (EJ SC-4)

SC-A5.3



Develop incentives to attract grocery stores, markets, and establishments selling fresh produce in areas with poor access to fresh food.

Policies

SC-A5.4



Every five years beginning in 20##, review the ~~existing~~ Alcoholic Beverage Sales Commercial Activities Ordinance to ensure it protects Impacted Communities from experiencing disproportionate concentrations of, and impacts from, new bars and liquor stores. To support

SC-P6.1



Ensure that future improvements in Impacted Communities will not ~~produce~~result in a net loss of affordable housing or ~~result insignificant~~ displacement of residents, ~~while seeking to increase the amount of affordable housing in the community.~~ (EJ SC-P4.1)



SC-P6.2



Expand efforts to prompt repair and rehabilitation of all substandard housing in Impacted Communities.

SC-P6.3



Coordinate with residents of Impacted Communities, community land trusts, the Housing Authority of Contra Costa County, affordable housing developers, and other organizations to transition vacant, unentitled land in Impacted Communities into affordable and transitional housing and shared equity models, which could include many types of innovative housing products. This should include homeownership opportunities to help residents build intergenerational wealth. (EJ SC-P4.2)

Actions

SC-A6.1



Obtain additional funding for and address barriers to participation in the County's Weatherization Program and similar programs like the Contra Costa Asthma Initiative and Neighborhood Preservation Program for extremely low-, very low-, and low-income homeowners, seniors, landlords, and renters. Focus these efforts on homes in Impacted Communities, and in particular rental housing and high-density multi-family housing. (EJ SC-A4.8)

SC-A6.2



Create a bulk buying program or ~~a~~ revolving loan fund that allows people to purchase energy-efficient electric appliances (, such as air conditioners, fans, air purifiers, heaters, stoves, ovens, and other etc.) and other items that increase building efficiency at wholesale prices or minimal cost, and/or possibly with zero-percent interest financing, to increase energy efficiency and replace hazardous appliances. Work with volunteer groups ~~to~~ help people install and dispose of air conditioners and other electrical appliances if they are unable to do so themselves, focusing on Impacted Communities and other areas with high levels/concentrations of vulnerable people. Consider augmenting energy-efficiency programs to reduce electricity use and help offset the cost of operating electrical appliances. (EJ SC-A4.10)

SC-A6.3



Partner with local solar providers, MCE, and ~~or~~ PG&E to enact a solar group buy program to purchase solar panels and battery storage in bulk for installation in Impacted Communities, including establishment and subsidization of community solar programs for joint membership, which aggregate multiple consumers' electricity sourced from a single photo-voltaic solar location. The program should include an educational component to teach/inform the community about the benefits and process of solar installation and give them the opportunity to sign up for the program at a discounted rate. (EJ SC-A4.11)



SC-A6.4



Expand the County’s first-time homebuyer program to provide more information and assistance, prioritizing outreach ~~and marketing~~ in Impacted Communities to spread awareness of the program. (EJ SC-A4.3)

See the Housing Element for a more comprehensive discussion of housing needs, homelessness, renter protection measures, and programs to affirmatively further fair housing.

SC-P7.2



Pursue arts and cultural investments as a tool for economic development, especially in Impacted Communities.

SC-P7.3



Support community groups and volunteer organizations in implementing temporary and permanent public art programs, especially in Impacted Communities.

D. ARTS AND CULTURE

Actions

Goal SC-7

Vibrant communities with strong identities reflected in public art and cultural events.

SC-A7.1

Amend the County Ordinance Code to establish a public art requirement for new development and funding mechanisms to create and maintain public art. (EJ SC-A1.8)

Policies

SC-P7.1



Support development of cultural facilities and programs, including public art, that are physically and financially accessible to all, with emphasis on bringing these to Impacted Communities. Work with residents, artists, and the Arts Council to ensure works of public art are appropriate for the communities where they are installed.



E. ECONOMIC EMPOWERMENT

E1. Workforce Development

Goal SC-8

Access to and expansion of high quality job training, job opportunities, and economic resources stability in Impacted Communities so that residents in Impacted Communities can access/acquire safe jobs, earn a living wage to support their families, and build shared prosperity. (EJ SC-5)

Policies

SC-P8.3



Welcome businesses, especially sustainable/clean/green businesses, that provide desired/essential goods and services in Impacted Communities, including food stores with fresh produce, healthcare, childcare, pharmacies, and other retailers, while discouraging predatory lenders, liquor stores, tobacco and cannabis retail stores, dollar stores, and fast-food restaurants. Balance community desires with comprehensive assessments of market demand to guide business attraction efforts. (EJ SC-P5.1)

SC-P8.4



Promote entrepreneurship, innovation, and locally -owned businesses and enterprises, especially ethnic, minority, and immigrant entrepreneurship, in Impacted Communities to support for the purpose of improving economic self-sufficiency and stability, including through training and outreach efforts to local small business owners and while minimizing permitting and other fees/barriers. (EJ SC-P5.2)

SC-P8.5



Encourage more daycares, preschools, and early childhood development centers to make childcare more viable and affordable for working families.

Actions

SC-A8.1



Establish a First Source Hiring Program requiring developers, contractors, and employers to utilize/make good-faith efforts toward employing the local construction workforce, with emphasis on residents of Impacted Communities, with emphasis on residents and those who are economically disadvantaged. (8-dq) (EJ SC-A5.1)

SC-A8.2



Partner with school districts, community colleges, community organizations, large employers, trade associations, unions, and job training centers to support enhanced job-skills training, recruitment programs and services, and childcare

services to support the county workforce, especially workers in Impacted Communities. Work with experienced groups to ensure that programs will be properly staffed and funded. Training and intervention strategies should reduce barriers to employment for youth, formerly incarcerated residents, and residents with limited English proficiency, and should support a just transition toward a sustainable economy by re-training displaced workers with skills for well-paying jobs in new industries.

SC-A8.3



Explore ~~strategies the feasibility to of~~ establishing a revolving loan fund, ~~a micro loans grant program, and~~ other economic development initiatives ~~to that~~ support small businesses ~~formation and expansion~~ in Impacted Communities. (EJ SC-A5.2)

SC-A8.4



Develop and sufficiently fund a program to offer one-on-one support to small businesses in Impacted Communities. ~~†~~ Through this program, provide guidance related to available grants, marketing, financing, and mentorship. (EJ SC-A5.3)

F. COMMUNITY ENGAGEMENT

Goal SC-10

Effective decision-making that seeks and incorporates the voices of county residents.

Policies

SC-P10.2



Provide residents with convenient access to information in the predominant languages spoken in the community and expand opportunities to engage with County government.

SC-P10.5

Support community-driven ~~/or~~ community-led initiatives that work toward achieving the ~~policies and actions~~ community objectives identified in the ~~e~~Community ~~p~~Profiles. (EJ SC-P6.2)



Goal SC-11

~~Meaningful and respectful engagement with Impacted Communities so that residents~~ Residents empowered have with strong voices to communicate needs and solutions. (EJ SC-6)

Policies

SC-P11.1



Engage with residents of Impacted Communities in a meaningful and respectful manner.

SC-P11.2



Notify and engage community members, organizations, and leaders when County planning decisions on major projects are being considered in or ~~adjacent to~~ near Impacted Communities. Conduct meaningful outreach and engagement with Impacted Communities early in the planning process, as follows:

- (a) Prepare public notices in the predominant language(s) spoken in the community and provide interpretation services at meetings as needed.
- (b) Make public notices and other important documents easy to understand and available in

print at local libraries, community centers, or other gathering places.

- (c) Use a wide array of methods to inform community members of opportunities to participate, such as the County website, social media, texts, banners, mailers, and flyers.
- (d) Use supplemental outreach approaches that are appropriate for the participating community.
- (e) Schedule, format, and locate community workshops and meetings to be convenient for community members, ~~z-~~ both in ~~-~~ person and online.
- (f) Use social media, virtual meeting platforms, recorded meetings, and other communication techniques ~~for~~ to assist those without time or ability to attend public meetings.
- (g) Consider data that reflects the economic, gender, age, and racial diversity of the affected population.
- (h) Clearly explain potential adverse impacts of a proposed project in plain language that is easily understood by the participating community. (EJ SC-P6.1)

SC-P11.3



Provide community engagement and information access options for people in Impacted Communities without access to computers or internet. Use facilities such as public libraries and community centers as a resource for making information and technology available.



SC-P11.4 

Strive for more diverse representation on County boards, commissions, committees, and similar bodies to better reflect the demographics and varying viewpoints of county residents, with greater efforts to engage under-represented populations.

SC-A11.4 

Develop centralized outreach services to support all County departments with language interpretation, translation services for written documents, and sign language services for public meetings ~~and interacting with the public.~~
(EJ SC-A6.5)

Actions

SC-A11.1 

Designate ~~County~~ staff in various departments to be liaisons to each Impacted Community. (EJ SC-A6.1)

SC-A11.2 

Identify communities with a significant number of non-English speaking households and develop resources and strategies ~~to~~ better engage ~~them.~~ (EJ SC-A6.3)

SC-A11.3 

Hold semi-annual public meetings in each Impacted Community, including the County Supervisor representing the community and representatives from the full spectrum of County ~~D~~ departments, to hear from residents of these communities, and use that input to inform the County's annual budgeting process. Provide interpretation services at these meetings. (EJ SC-A6.2)

SC-A11.6 

Amend the County Ordinance Code to i ~~n~~crease the public notification distance for hearings concerning refineries and other large stationary sources (i.e., any stationary source that emits, or has the potential to emit, 40 tons per year or more of nitrous oxides or sulfur dioxide; 15 tons per year of coarse particulate matter; 10 tons per year of fine particulate matter; and/or 200 tons per year of carbon dioxide) from 300 feet to 3,000 feet. (EJ SC-A6.4)

See the Public Facilities and Services Element for policies that prioritize public investment in capital improvements in Impacted Communities.

5

TRANSPORTATION ELEMENT

NOTES FOR ALL ELEMENTS

The General Plan will call out policies and actions that address specific topics of concern raised by the community. For the reader's ease, policies and actions related to these topics of concern are identified throughout the General Plan using the following icons. The policies and actions related to each topic will be compiled in an appendix to the General Plan.



Community Health



Environmental Justice



Economic Development



Sustainability

In addition, the draft policy guidance uses the term “Impacted Community” to identify what are called “disadvantaged communities” under Senate Bill (SB) 1000. SB 1000 defines these communities as low-income areas that are disproportionately affected by environmental pollution and other hazards that can lead to negative health effects, exposure, or environmental degradation.

Goals, Policies, and Actions

A. SAFE AND SUSTAINABLE TRANSPORTATION

Goal TR-1

A transportation system that promotes active transportation, supports ~~the~~ effective and equitable provision of transit services, and reduces greenhouse gases and other environmental harm. (5-L, 8-AE, 8-106)

Policies

TR-P1.6



~~Collaborate~~**Partner** with transit providers, cities, and CCTA to develop a countywide transit stop program that takes a holistic approach to transit stop planning and construction. Push for the program to address right-of-way adequacy (i.e., sufficient space for bus pullouts and amenities), amenities (e.g., shelters, seating), and improvements around stops to



~~improve~~increase accessibility (e.g., curb ramps, and sidewalk widening, etc.). (5-l) (EJ TR-A1.7)

Actions

TR-A1.5



Pursue funding and other resources to implement the Accessible Transportation Services Strategic Plan and similar plans ~~or~~and initiatives that expand the hours of operation, operational boundaries, convenience, and quality of accessible transit to improve mobility for seniors, people with disabilities, and other vulnerable populations. (5-u) (EJ TR-A1.2)

TR-A1.7



~~Work with transit agencies to P~~provide convenient ways for residents to ~~notify the County and other responsible agencies when transit shelters and amenities, other transportation infrastructure, and street furniture (i.e., benches, garbage cans, and water fountains) are in a state of disrepair~~report transit shelters and other improvements (e.g., lighting, seating) that are in disrepair. Encourage and promote ~~use of this reporting program~~reporting countywide, especially in Impacted Communities. (EJ TR-A1.3)

TR-A1.8



Support establishment of a Bay Area-wide transit fare equity program that includes free ~~and/or~~ means-based transit passes for ~~qualifying~~residents of Impacted Communities~~or other vulnerable communities~~. (EJ TR-A1.4)

TR-A1.9



~~Create~~Implement an equitable pricing program for on-street parking in commercial corridors throughout the county. Such a program would allocate parking revenue to improvement projects in Impacted Communities. (EJ TR-A1.1)

See also the Health and Safety Element for policies and actions related to greenhouse gas emissions, air quality, and parking lot shading.

Goal TR-2

A transportation system that protects human life.

Policies

TR-P2.3



~~Require or P~~provide energy-efficient street lighting for traveler safety and comfort. Prioritize ~~implementation~~installation in Impacted Communities, particularly at parks, transit stops, alleyways, ~~bike-bicycle~~ and pedestrian paths, and other appropriate areas, consistent with community ~~goals~~preferences. (5-15) (EJ TR-P1.2)

Actions

TR-A2.2



Work with school districts, neighborhood groups, and the local Safe Routes to School Program to identify and address neighborhood-specific issues and needs, prioritizing development and maintenance of sidewalks, enhanced crosswalks, street lighting, street trees, bicycling infrastructure, transit stop amenities, traffic calming, and other safety improvements in Impacted Communities, including in residential areas and near schools, libraries, and recreational facilities ensure that safe active modes of transportation to schools and related facilities are prioritized in Impacted Communities. Engage school districts, neighborhood groups, and the local Safe Routes to School Program in implementing this action. (5-42) (EJ TR-P1.4)

C. MULTIMODAL ROADWAY NETWORK

Goal TR-4

A roadway network that accommodates active, safe, reliable, comfortable, convenient, affordable, and resilient multi-modal travel options for all county residents, businesses, and visitors, regardless of age, ability, race, culture, or economic status.
(5-A, 5-M, 5-N, 5-O, 5-P) (EJ TR-1)

Policies

TR-P4.7



Encourage walkability by streamlining implementation of traffic-calming measures through the Neighborhood Traffic Management Program. (EJ TR-P1.3)

D. ACTIVE TRANSPORTATION

Goal TR-5

Support people who walk, bike, roll, or use mobility devices by creating safe, equitable, connected, and comfortable facilities for all ages and abilities.
(5-J, 8-107, 8-108, 9-1)

Actions

TR-A5.3



Develop a Local Access Score to identify top priorities for active transportation projects, including criteria that prioritize projects in Impacted Communities. (EJ TR-A1.8)



E. GOODS MOVEMENT

Goal TR-6

Safe and efficient movement of goods consistent with the County's goals to reduce emissions, protect public safety, and support economic development, local access, and circulation.

to divert trucks from Impacted Communities and establish criteria for designating truck routes, ~~and~~ installing signage, ~~and enforcement.~~ (EJ TR-A1.5)

TR-A6.2

Facilitate enforcement of idling ~~trucks~~ restrictions by promoting community-based reporting ~~through the use of phone and online apps for offenses that would trigger immediate to~~ enforcement agencies ~~follow up.~~ (EJ TR-A1.6)

See also the Health and Safety Element for policies and actions related to protecting the transportation network, including rail, from sea-level rise.

Policies

TR-P6.1

Partner with adjacent jurisdictions, ~~Contra-Costa Transportation Authority, CCTA,~~ and the Metropolitan Transportation Commission, to manage regional movement of goods through unincorporated areas, minimizing impacts on residents and other sensitive receptors. (EJ TR-P1.5)

Actions

TR-A6.1

Develop a program ~~that to~~ establishes, ~~and~~ maintains, ~~and aggressively enforces~~ truck routes ~~in the unincorporated county through State and local legislation and collaboration with other enforcement agencies,~~ with the goal of minimizing impacts on residents and other sensitive receptors. This program should provide engineering solutions

8

PUBLIC FACILITIES AND SERVICES ELEMENT

NOTES FOR ALL ELEMENTS

The General Plan will call out policies and actions that address specific topics of concern raised by the community. For the reader's ease, policies and actions related to these topics of concern are identified throughout the General Plan using the following icons. The policies and actions related to each topic will be compiled in an appendix to the General Plan.



Community Health



Environmental Justice



Economic Development



Sustainability

In addition, the draft policy guidance uses the term “Impacted Community” to identify what are called “disadvantaged communities” under Senate Bill (SB) 1000. SB 1000 defines these communities as low-income areas that are disproportionately affected by environmental pollution and other hazards that can lead to negative health effects, exposure, or environmental degradation.

Goals, Policies, and Actions

A. GENERAL PUBLIC FACILITIES AND SERVICES

A1. Coordinated Facilities and Services

Goal PFS-1

Coordinated public facilities and services that support the economic, social, and environmental well-being of the county and its residents. *(7-D, 7-AW)*

Actions

PFS-A1.2



Regularly update the County's Capital Improvement Program/Master Facilities Plan, Capital Road Improvement and Preservation Program, Parks Capital Improvement Program, and similar plans and programs. Ensure that each



update is consistent with the General Plan, particularly its provisions related to environmental justice. (3-l, 7-7, 7-e, 7-g)

A2. Just and Equitable Facilities and Services

Goal PFS-2

Public facilities, infrastructure, and services that meet the needs of, and are accessible to, residents of Impacted Communities. (EJ PFS-1)

Policies

PFS-P2.1



Ensure County facilities and services meet the needs of all users, regardless of age, ability, race, ethnicity, culture, language, or economic status. (7-AU, 7-AW, 7-161) (EJ PSF-P1.10)

PFS-P2.2



Systematically prioritize investments in public facilities, infrastructure, and services that benefit Impacted Communities and respond to the needs identified in their eCommunity pProfiles. (EJ PFS-P1.1)

PFS-P2.3



~~Advocate for and eC~~oordinate with ~~various~~ service providers (e.g., water, sewer, transit, and recreation districts) and advocate for proper planning, maintenance, and implementation of services and infrastructure to ensure efficient and effective service delivery in Impacted Communities. (EJ PFS-P1.2)

PFS-P2.4



Prioritize and adequately fund code enforcement and clean-up of illegal dumping and associated code enforcement on public and private property in Impacted Communities. ~~Implementation strategies to discourage illegal dumping such as increased education and awareness, patrols, signage, cameras, and rapid cleanup.~~ (EJ PFS-P1.3)

PFS-P2.5

~~Place appropriate contact information on the front page of the DCD website to m~~Maintain clear, simple lines of communication for residents to reach the County regarding code enforcement and nuisance complaints. Provide equitable, prompt responses to resident calls. (EJ SC-A1.11)

Actions

PFS-A2.1



Prioritize needs and services in each Impacted Community as part of the annual budgeting process. (EJ PFS-A1.1)



PFS-A2.2 

Establish funding and financing mechanisms in Impacted Communities to provide and maintain community-desired public facilities and services. These could be County- or community-initiated, and include business improvement districts, green benefit districts, and similar mechanisms. (EJ PFS-A1.2)

PFS-A2.3   

Implement and maintain urban greening and green infrastructure, including sustainable/green street projects, in Impacted Communities that support the community's ~~goals/objectives~~, including those identified in the ~~eC~~ommunity ~~pP~~rofiles. (EJ PFS-A1.3)

PFS-A2.4  

Assess current Code Enforcement and Public Works maintenance practices for equitable implementation. Prioritize resources to keep Impacted Communities safe and clean, emphasizing enforcement actions on issues identified in ~~eC~~ommunity ~~pP~~rofiles. (EJ PFS-A1.4)

PFS-A2.5

~~Provide contact information for Code Enforcement on the front page of the DCD website, and work with the Contra Costa Crisis Center to provide that information through~~ ~~Ensure the current 211 information service includes contact information for Code Enforcement.~~ (EJ PFS-A1.5)

PFS-A2.6 

Establish a task force of County department heads or their designee(s) to coordinate efforts, provide oversight, and otherwise ensure that public services and facilities in Impacted Communities are prioritized and delivered efficiently and effectively. (EJ PFS-A1.6)

PFS-A2.7 

~~Continue to advocate for~~ Pursue public-private partnerships that will improve access to reliable, fast internet and make digital resources available in Impacted Communities at affordable prices. (EJ PFS-P1.4)

A3. Funding Services and Infrastructure

Goal PFS-3

Adequate, fair, and cost-effective funding for public facilities, infrastructure, and services.

Policies

PFS-P3.4 

When communities request levels of County services that exceed the countywide standard, require ~~the~~ creation of (or annexation into) a County Service Area, Community



Facilities District, or other special governmental unit to fund the service costs. Allow exceptions for enhanced services in Impacted Communities if alternative funding sources can be identified. (7-U, 7-60) (EJ PFS-P1.5)

PFS-P3.6



When adopting, amending, and imposing impact fees, Community Benefits Agreements, and developer exactions, consider the effects of such fees and exactions upon project economics, the County's goals, ~~and~~ housing supply, ~~and~~ **overall economic development**. Consider fee reductions or exemptions for projects in Impacted Communities that are consistent with the ~~priorities~~ **community objectives** identified in their ~~re~~ **Community Profile** ~~if gap funding can be identified~~. (7-6) (EJ PFS-P1.6)

B. WATER AND SEWER

Goal PFS-4

Water and wastewater services that meet current and future needs in a safe and environmentally responsible manner. (7-F, 7-K, 7-L)

Policies

PFS-P4.12



~~Collaborate~~ **Partner** with water service providers ~~(e.g., Contra Costa Water District, EBMUD, and community services districts) and private well owners~~ to ensure continuity of water supplies and provide financial relief to Impacted Communities if prices rise in drought conditions. (EJ PFS-P1.7)

See also the Conservation, Open Space, and Working Lands Element for policies and actions related to water quality.

E. SOLID WASTE MANAGEMENT

Goal PFS-7

Safe, efficient, and environmentally responsible solid waste diversion practices and management. (7-AE, 7-AH)

Policies

PFS-P7.6

~~Support Expansion of~~ recycling programs and ~~efforts to~~ locate convenient, accessible recycling centers in Impacted Communities ~~that are convenient to reach using multiple modes of transportation.~~ (EJ PFS-P1.9)

Actions

PFS-A7.3

Partner with community organizations and solid waste franchise collection haulers to maximize participation in community clean-up days and residential on-call garbage pick-ups in Impacted Communities. Encourage community participation by holding these events in conjunction with other community events whenever possible. (EJ PFS-A1.7)

PFS-A7.5

Install signage and increase education, monitoring, and enforcement, and rapid cleanup to discourage illegal dumping ~~and to prosecute violators,~~ especially in Impacted Communities and rural areas. (EJ PFS -P1.8)

~~PFS-A7.6~~

~~Pursue funding for and develop a tool lending library program to serve Impacted Communities. (EJ PFS-A1.8)~~

F. PARKS AND RECREATION

F1. Comprehensive Parks and Trails System

Goal PFS-8

An easily accessible, integrated system of high-quality parks and trails to meet the needs of all residents.
(9-H)

Policies

PFS-P8.3

Require ~~major new development all~~ projects subject to the Park Impact Fee Ordinance in Impacted Communities to improve existing park and recreation amenities within the community and/or to add new amenities within the project; ~~ideally that are~~ open to the public and listed in, or added to, the County's Parks Capital Improvement Plan. In-lieu fees should be used when the County determines that amenity improvements or new amenities are not feasible.
(EJ PFS-P2.2)

PFS-P8.4

~~Encourage new development, cities, and recreation agencies to develop natural streams and flood control and~~



~~other utility facilities for public open spaces, linear parks, and trails.~~ Increase recreation opportunities by working with other agencies to ~~convert co-locate parks and trails with~~ public facilities and easements, ~~such as utility corridors or unused rights of way, into parks and trails~~, with Impacted Communities prioritized. (7-R, 7-48, 7-49, 7-50, 7-51, 7-ag, 8-Y, 8-dk, 9-38) (EJ PFS-P2.4)

F2. Just and Equitable Parks and Recreation Access

Goal PFS-9

Convenient access to safe and well-maintained recreational activities and parks in Impacted Communities. (EJ PFS-2)

PFS-P8.9



Support local community groups and volunteer organizations in efforts to improve and maintain local parks, trails, and other public spaces, such as through an Adopt-A-Park/Trail program, especially in Impacted Communities. (EJ PFS-P2.5)

Actions

PFS-A8.2



Coordinate with park and recreation districts ~~and cities~~ to prepare a parks and open space needs assessment for ~~all unincorporated communities, prioritizing each~~ Impacted Communities. ~~Integrate the results of the assessment into the Parks Capital Improvement Program and Based on the results of the assessment for each community,~~ implement improvements that address barriers to outdoor physical activity, such as inadequate infrastructure and safety concerns. (9-x) (EJ PFS-A2.1)

Policies

PFS-P9.1



Increase access to diverse, high-quality parks, green space, recreational facilities, trails, and natural environments for residents of Impacted Communities, including through ~~a~~ ~~variety of multiple~~ transportation modes. ~~Collaborate Partner~~ with other organizations to obtain funding, and design and maintain these facilities to offer a safe and comfortable environment for residents of all ages and abilities. (9-34) (EJ PFS-P2.1)

PFS-P9.2



Promote and prioritize recreational activity programs and opportunities in Impacted Communities. (EJ PFS-P2.6)



PFS-P9.3



~~Collaborate with school districts, park and recreation districts, utilities, and other entities to support joint use recreation facilities serving Impacted Communities. (9 f) (EJ PFS P2.3)~~

H. LIBRARIES

Goal PFS-11

Library services that meet the informational and social needs of county residents.

Policies

PFS-P11.1



Locate library facilities and services in areas with broadband internet access that are along well-traveled thoroughfares and transit routes accessible to the greatest number of people, prioritizing expansion of library services in Impacted Communities.

9

HEALTH AND SAFETY ELEMENT

NOTES FOR ALL ELEMENTS

The General Plan will call out policies and actions that address specific topics of concern raised by the community. For the reader's ease, policies and actions related to these topics of concern are identified throughout the General Plan using the following icons. The policies and actions related to each topic will be compiled in an appendix to the General Plan.



Community Health



Environmental Justice



Economic Development



Sustainability

In addition, the draft policy guidance uses the term “Impacted Community” to identify what are called “disadvantaged communities” under Senate Bill (SB) 1000. SB 1000 defines these communities as low-income areas that are disproportionately affected by environmental pollution and other hazards that can lead to negative health effects, exposure, or environmental degradation.

Goals, Policies, and Actions

A. AIR QUALITY

A1. Countywide Air Quality

Goal HS-1

Air quality that supports community and environmental health. (8-AC, 8-AD)

Policies

HS-P1.2



Support and participate in emission and exposure reduction, public education, engagement, and outreach programs sponsored by BAAQMD and other agencies that promote air quality, focusing on Impacted Communities, ~~and carried out in a way that is culturally and linguistically appropriate.~~ (EJ HS-P1.11)



HS-P1.4



Require that any mitigation of air quality impacts occur on-site to the extent feasible. For any mitigation that relies relying on offsets, obtains require that the offsets be obtained from sources as near to the project site as possible. For projects inlf the project site is within or adjacent to an Impacted Community, obtain the offsets/mitigation within or adjacent to the Impacted Community before seeking offsets elsewhere that community unless determined infeasible by the County. (7-120) (EJ HS-P1.12)

HS-P1.7



Require new or expanded commercial and industrial projects exceeding 1075,000 square feet of gross floor area, such as big-box stores, warehouses, distribution centers, and similar uses, to be near zero-emissions operations, including the facilities themselves and the associated fleets. Require all necessary measures, such as the following, to achieve near zero emissions:

- (a) Provide adequate on-site electric vehicle (EV)-capable parking for all anticipated truck traffic to prevent idling and off-site queuing.
- (b) Provide electrified loading docks with receptacles allowing plug-in of refrigerated and other types of trailers that otherwise would receive power from the tractor unit.
- (c) Utilize-Use heavy-duty trucks that are model year 2014 or later and expedite a transition to zero-emission trucks as they become commercially available. Ensure contracts with motor carriers

include air quality incentives or requirements, such as providing incentives to fleets that met United States Environmental Protection Agency (EPA) SmartWay standards or requiring use of zero-emission (ZE) or near zero-emission (NZE) trucks.

(b)(d) Utilize-Use a “clean fleet” of delivery vehicles as they become commercially available, but no later than 2025.

(e) Utilize-Use zero-emission yard equipment, such as forklifts, pallet trucks and jacks, and stackers, and other yard equipment.

(e)(f) Implement practices to control and remove feed fugitive dust, tire wear, brake dust, and other contaminants from paved areas.

(d)(g) Consider exemptions on a case-by-case basis for retailers selling groceries and medical products. (EJ HS-P1.5)

HS-P1.8



Prohibit non-essential idling of diesel engines idling countywide, and Prohibit non-essential vehicle idling of all vehicles within 100 feet of sensitive receptors, such as homes, schools, playgrounds, sports fields, childcare centers, senior centers, and long-term health care facilities. (EJ HS-P1.6)

HS-P1.9



Require new development to locate sensitive receptors, such as homes, schools, playgrounds, sports fields, childcare centers, senior centers, and long-term health care facilities as far away as possible from significant pollution sources. (8-111,

~~8-do) (EJ HS-P1.3)~~

HS-P1.10



~~Require that new residential developments are designed to ensure occupants will not be exposed to elevated levels of air pollution, including fine particulate matter (PM_{2.5}), by to adhering to BAAQMD's Planning Healthy Communities Places Guidelines when local conditions warrant. (EJ HS-P1.10)~~

HS-P1.11



~~Require housing projects to evaluate and mitigate the health risks from surrounding air pollution for the future occupants of the project, not just impacts of the project on the surrounding environment. (EJ HS-P1.9)~~

Actions

HS-A1.1



Adopt an ordinance ~~that matches or is more~~ at least as stringent than the State's maximum idling law, and coordinate with CARB, ~~BAAQMD~~, and law enforcement to achieve compliance. (EJ HS-A1.4)

HS-A1.4



In consultation with BAAQMD and community stakeholders, amend the County Ordinance Code to create an Air Pollution Exposure Overlay Zone around freeways that requires new construction in these areas to install enhanced

ventilation systems and other strategies to protect people from respiratory, heart, and other health effects associated with breathing polluted air.

HS-A1.5



In consultation with BAAQMD and community stakeholders, amend the County Ordinance Code to create an Industrial-Residential Interface Overlay Zone applied to areas where residential land uses and other sensitive receptors interface or directly abut heavy industrial land uses. In the overlay zone, require industrial uses to reduce pollution, plant vegetative buffers, and/or employ other strategies to mitigate air quality, noise, vibration, odor, light, visual, and safety impacts on nearby sensitive receptors. In addition, require new sensitive receptor uses to install enhanced ventilation systems and other strategies to protect residents from health and quality of life impacts.

A2. Air Quality in Impacted Communities

Goal HS-2

Healthy air quality for all communities so no community bears the disproportionate burden of environmental hazards and health risks. (EJ HS-1)



Policies

HS-P2.1



When evaluating health risk impacts of projects in Impacted Communities, use an excess cancer risk of ~~16.0~~ 1.0-2 per million and a non-cancer (acute and chronic) hazard index greater than 1.0-2 as the threshold for finding that the project could cause a cumulatively considerable contribution and a significant impact. (EJ HS-P1.2)

HS-P2.2



Increase the tree canopy on public property, especially in Impacted Communities and areas with a high heat index, by prioritizing funding for new street tree planting and maintenance. (EJ HS-P1.7)

HS-P2.3



Support protection, restoration, and enhancement of natural landscapes in and near Impacted Communities for their role in improving air quality and community health. (EJ HS-P1.8)

Actions

HS-A2.1



Coordinate with community members and Establish a comprehensive, long term strategy that coordinates efforts from appropriate regulatory agencies to prepare community-scale plans for reducing and mitigating air pollutant emissions and industrial hazards, such as impacts

from private industrial facilities on adjacent communities, both acute and long term, with priority given to developing strategies for Impacted Communities. The strategies must include specific mitigations to address air pollution, pipeline risks, accidents, potential water or soil contamination, and impacts to sensitive ecological resources, for each Impacted Community, or group of Impacted Communities, as appropriate. Require future projects to demonstrate consistency with those plans. (EJ HS-A2.3)

HS-A2.2



Coordinate with community members, BAAQMD, State and other regional appropriate regulatory agencies entities and community members to facilitate Assembly Bill (AB) 617 citizen-led programs, including data collection, monitoring of pollution exposure, and identification and implementation of solutions in Impacted Communities. Assist BAAQMD in establishing and implementing Community Air Monitoring Plans to reduce the health impacts of air pollution in Impacted Communities, including considering future General Plan and ~~for~~ Zoning Code amendments as needed to support BAAQMD in meeting AB 617 objectives. (EJ HS-A1.1 and -A1.2)

HS-A2.3



Coordinate with BAAQMD to determine where to focus a targeted permit inspection program in Impacted Communities to help ensure enforcement of air quality permits. (EJ HS-A1.3)



HS-A2.4



Prepare an urban forest master plan for the county that emphasizes planting of low-maintenance native tree species and includes quantified goals and tracking methods, including mapping the tree canopy, and prioritizes planting in Impacted Communities. (EJ HS-A1.5)

See Section F of this Health and Safety Element and the Conservation, Open Space, and Working Land Element for additional policies and actions related to tree preservation and planting. See also the Transportation Element for policies and actions related to air quality associated with vehicular emissions.

C. CLIMATE CHANGE, RESILIENCE, AND ADAPTATION

Goal HS-4

Resilient communities that are prepared for, responsive to, and recover from hazards created or worsened by climate change.

Policies

HS-P4.3



Prioritize efforts to protect Impacted Communities from the

impacts of climate change.

G. MANAGEMENT OF HAZARDOUS MATERIALS AND HAZARDOUS WASTE

G1. Hazardous Materials and Hazardous Waste Management

Goal HS-9

Communities that are protected from hazards associated with the use, manufacture, transport, storage, treatment, and disposal of hazardous waste materials and hazardous materials, including from fossil fuels, chemical refining, and power plants, as well as pipelines, rail lines, and truck transportation. (10-N) (EJ HS-2)

Policies

HS-P9.1



Provide equitable inspection and enforcement of hazardous material and hazardous waste regulations throughout the county. (EJ HS-P2.3)



HS-P9.9



~~Require applicants for projects in Impacted Communities that involve hazardous materials or hazardous waste to provide clear information in plain language to residents of Impacted Communities about the hazards they faced by nearby residents from the project. Review and verify this information, make it available to residents, and encourage project applicants to host at least one community meeting to discuss potential hazards from pollutant sources in and around their community. (EJ HS-A2.4)~~

HS-P9.10



Oppose construction of new large-scale hazardous waste facilities. (EJ HS-P2.2)

HS-P9.15



~~Ensure there are~~Encourage and facilitate establishment of adequate sites for ~~the~~ collection of household hazardous waste (HHW), unused pharmaceuticals, and universal wastes generated by boats and marinas, including along with provisions for residents ~~that don't own cars or who~~ are physically unable to deliver materials to a collection site. (EJ HS-P2.4)

G.2 Management of Historical Hazardous Waste Releases

Goal HS-10

Communities that are protected from the impacts of historical hazardous waste releases. (7-AK)

Policies

HS-P10.1



Coordinate with ~~local and regional~~appropriate agencies in efforts to remediate or treat contaminated surface water, groundwater, ~~or~~and soils in or affecting Impacted Communities. (7-116) (EJ HS-P2.1)

Actions

HS-A10.2



In ~~collaboration~~consultation with local environmental justice organizations, update the County's Brownfields and Contaminated Sites Cleanup Policy and prioritize implementation of clean-up efforts in Impacted Communities. (7-116) (EJ HS-A2.1)



HS-A10.3



Establish a mechanism, possibly similar to the surety bonds required by the US EPA for underground tanks, to ensure that new or expanded industrial uses ~~that involve~~ hazardous materials will fund any needed clean-up of resulting contamination ~~resulting from the use~~. (EJ HS-A2.2)

I. EMERGENCY PREPAREDNESS, RESPONSE, AND EVACUATION

11. Preparedness, Response, and Recovery

Goal HS-12

Communities and local economies that continue to function during all hazards and have coordinated and current effective response and recovery procedures. (10-5)

Policies

HS-P12.5



Ensure there are adequate identified locations for alternative alternate care sites, especially in Impacted Communities. (EJ HS-P2.5)

Actions

HS-A12.4



Identify and map existing community facilities, such as libraries, gymnasiums, community centers, and auditoriums, that can serve as community resilience hubs and support people with access and functional needs during hazard events. Work with the appropriate agencies to identify and implement facility upgrades, prioritizing facilities in Impacted Communities. Coordinate with park and recreation and school districts to identify indoor recreational and athletic facilities to serve as emergency housing and cooling centers in Impacted Communities for natural hazards or extreme heat events. In addition, work with these districts to prepare a list of priority improvements at these facilities to implement in preparation for emergency events.-(10-j) (EJ HS-A2.5))