

Style Definition: TOC 2



2021-22 Adopted Draft Federal Platform

Contra Costa County

Website: www.contracosta.ca.gov

As Amended March 9, 2021



TABLE OF CONTENTS

Introduction	3
County Profile	3
Demographic Highlights	3
Governance	4
Legislative Platform Purpose	6
Mission, Vision, and Values	6
Federal Funding Needs: <i>Project specific</i>	7
Surface Transportation Funding Needs	8
Federal Funding Needs: <i>Program specific</i>	10
Priority Policy Statements	12
Climate Change	12
Criminal Justice and Mental Health	12
The Delta	13
Health Care	13
Homeless Services	14
Human Services	15
Land Use	19
Library Services	19
Natural Resources/Permit Streamlining	19
Pipeline Safety	20
Telecommunications and Broadband	20
Transportation, Mobility Management and Coordination	20
Veterans	21
Waste Management	21

INTRODUCTION

County Profile

One of the original 27 counties established in California in 1850, Contra Costa County is home to more than one million people, making it the ninth most populous county in the state. Physically, Contra Costa is over 733 square miles and extends from the northeastern shore of the San Francisco Bay easterly about 50 miles to San Joaquin County. The County is bordered on the south and west by Alameda County and on the north by the Suisun and San Pablo Bays. The western and northern shorelines are highly industrialized, while the interior sections are suburban/residential, commercial and light industrial.



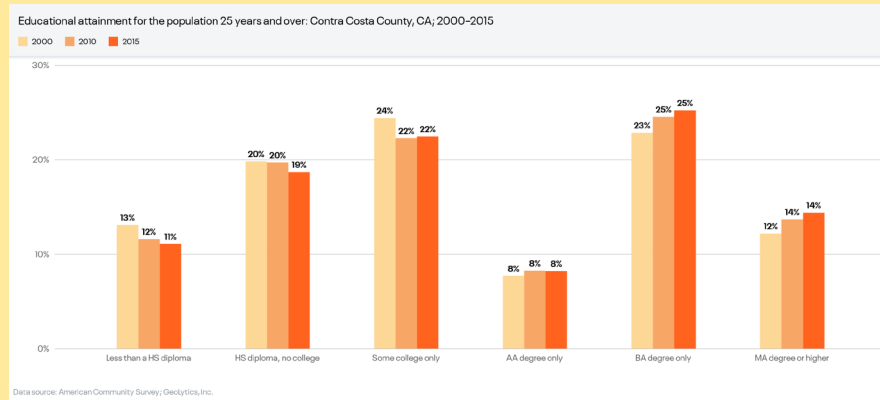
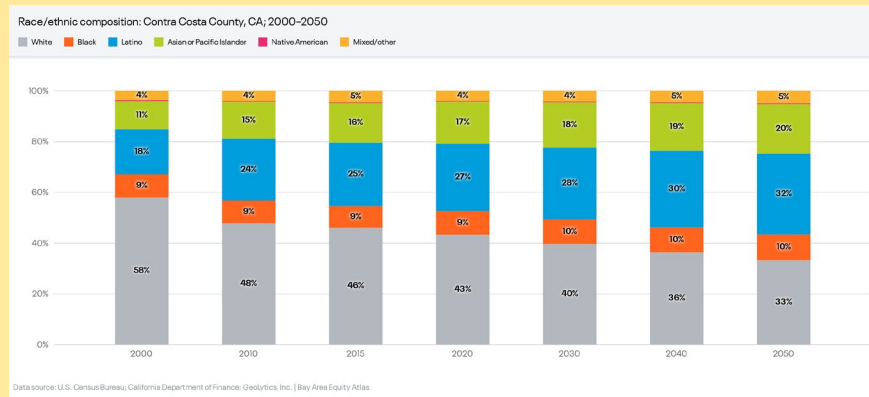
About 40 percent of the county is under the jurisdiction of 19 incorporated cities and towns, and large portions of the remaining unincorporated area are part of public park systems. Most of the population is consolidated along the major transportation corridors--Interstates 80 and 680, Highways 4 and 24, and the BART lines. Contra Costa County is also very diverse, with communities that range from small agricultural towns like

Byron, with a population density of about 200 people per square mile, to urban population centers like Contra Costa Centre, a bustling transit village with a population density of 8,400 people per square mile. With its strategic location as **The Capital of The Northern California Mega-Region™** and easy access to suppliers and customers, Contra Costa County is a business destination full of opportunity.

Demographic Highlights

~~Approximately 1.1 million people~~ According to the 2022 State Department of Finance data 1,156,555 people live in Contra Costa County; only 15%, or about ~~172,513~~176,941 people, reside in the unincorporated areas of the county. The median age of Contra Costa County residents is 39 years old. Our population of seniors age 60 or older is expected to grow by approximately 47% between 2020 and 2050, making this age group our fastest growing.

The majority (44%) of County residents are white, with significant proportions of Asian (16.5%) and African American (8%) people. The Census tracks Latinx ethnicity separately from other populations; in total, the Hispanic/Latino population makes up approximately 26% of the total population.



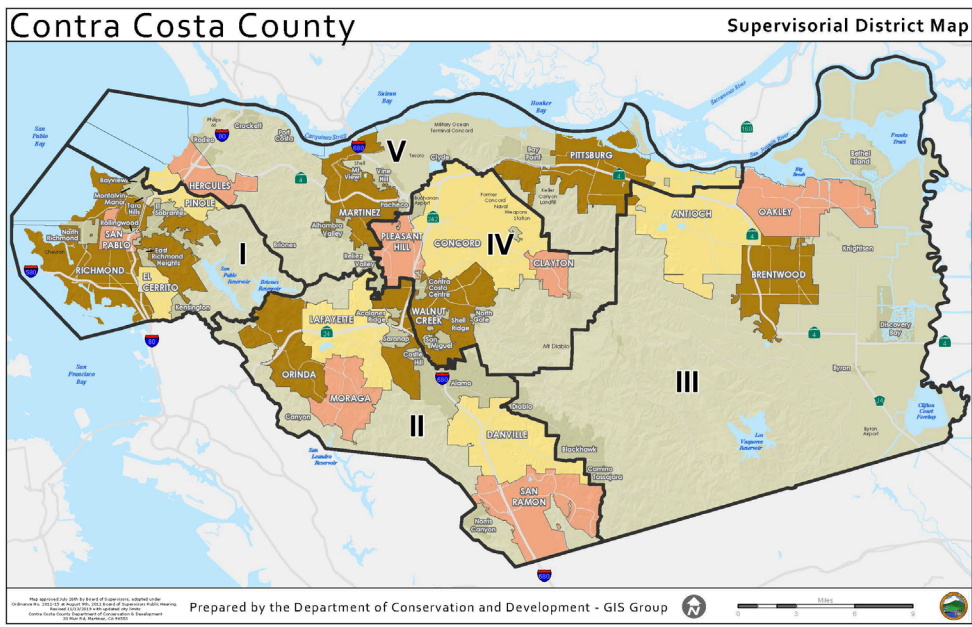
Governance

A five-member Board of Supervisors, each elected to four-year terms, serves as the legislative body of the County, which has a general law form of government. Also elected are the County Assessor, Auditor-Controller, Clerk-Recorder, District Attorney, Sheriff-Coroner and Treasurer-Tax Collector. The County Administrator, Monica Nino, is appointed by the Board and is responsible for running the day-to-day business of the County.

Contra Costa County Board of Supervisors:

Formatted: Font: 14 pt

- District I: John M. Gioia
- District II: Candace Andersen
- District III: Diane Burgis
- District IV: ~~Karen Mitchoff~~
Ken Carlson
- District V: Federal D. Glover



Legislative Platform Purpose

The Legislative Platform establishes the priorities, principles, and policy statements of the Contra Costa County Board of Supervisors and establishes the basis for its advocacy efforts, alerting our legislative partners of the greatest needs of our residents and where we need additional help. The Platform also provides general direction to County departments and agencies, legislative advocates, delegation members, and the public on our positions on key policy matters that would impact the way the County does business.

Throughout the legislative session, the County will review and take positions on various policy and regulatory proposals. When a recommended position is consistent with existing County policy, as adopted in the Platform, the CAO's office or department staff will prepare a County position letter for signature by the Board Chair.

Contra Costa County has also adopted a **Delta Water Platform** to identify and promote activities and policy positions that support the creation of a healthy Sacramento-San Joaquin Delta. Contra Costa County uses this Delta Water Platform to guide its actions and advocacy regarding the future of the Delta.

Mission, Vision, and Values

Contra Costa County has adopted the following Mission, Vision and Values statement:



The graphic features the Contra Costa County seal in the top left corner. The title "Contra Costa County" is prominently displayed in a large, light blue serif font. Below the title, the text is organized into three columns: Mission, Vision, and Values. The bottom of the graphic is a collage of diverse people in various professional and community roles, including a firefighter, a woman with a dog, a construction worker, a man with a laptop, a woman with books, a woman with a child, a nurse, a police officer, and a man in overalls.

Mission
Contra Costa County is dedicated to providing public services which improve the **quality of life** of our residents and the economic viability of our businesses.

Vision
Contra Costa County is recognized as a **world-class service organization** where innovation and partnerships merge to enable our residents to enjoy a safe, healthy and prosperous life.

Values
Contra Costa County **serves people,** businesses and communities. Our organization and each one of our employees value:

- Clients and communities
- Partnerships
- Quality Services
- Accountability
- Fiscal prudence
- Organizational excellence


FEDERAL FUNDING NEEDS: *PROJECT SPECIFIC*

1. Secure funding for the Army Corps' *annual maintenance dredging of the federal channels* along the County's borders that maintain the ship channel to the authorized depth of -35 feet.
2. Advocate for and support the *San Francisco to Stockton Navigation Improvement Project* that proposes to deepen the ship channel to realize transportation efficiencies.
3. *Mount Diablo Mercury Mine*. Support legislation in the Water Resources Development Act that would give authority to the Army Corps of Engineers to build remediation projects in the Remediation of Abandoned Mine Sites program.
4. *Buchanan Field and Byron Airports*: Secure funding for Master Plan/Business Plan Implementation.





Surface Transportation Funding Needs

- ✓ **Vasco Road Safety Improvements:** Project components (barriers, shoulders, passing facilities) will eliminate cross median collisions, wildlife undercrossing/overcrossing will preserve migration patterns.
- ✓ **North Richmond Community Supportive Transportation Improvements:** Alternate truck route/regulations, trail/school access improvements to address community safety, public health and livability needs, and general transportation improvements to support job growth and priority development area access.
- ✓ **Eastern Contra Costa Multi-use Trail Network:** Active mode access improvements for planned and existing mass transit stations, schools, and activity centers.
 
- ✓ **Brentwood Intermodal Transit Center:** Multimodal station access improvements and the extension of mass transit from the Antioch BART station.
- ✓ **Iron Horse Corridor Enhancement Program:** Improvements to trail access (to/from activity center and other regional trails), additional facilities for different active modes, overcrossings, and at grade intersection improvements.

- ✓ **State Route 4 / Old River Bridge Study:** The existing structure is narrow; improvements would address safety and traffic flow.

- ✓ **West Contra Costa High Capacity Transit:**
Implementation of the WCCTAC High Capacity Transit Study.



- ✓ **Kirker Pass Truck Climbing Lane (southbound) and Turn Channelization:**
Needed for improved traffic flow and safety.

- ✓ **Vasco Road – Byron Highway Connector:** Connection between two major arterials improving connectivity while removing through/truck traffic from the Byron community.



FEDERAL FUNDING NEEDS: *PROGRAM SPECIFIC*

1. **Housing:** Support funding for economic development and affordable housing for local agencies engaged in building stronger, more economically viable communities.
2. **Local Cost Share.** Support legislation that would give the Army Corps of Engineers the authority to reduce the project cost share in disadvantaged communities to 10% local match.
3. **Multimodal National Freight Network:** Support increases in funding for National Freight Strategic Plan implementation specifically to fulfill the goals of the Northern Waterfront initiative and to address congestion in the I-680 Corridor.

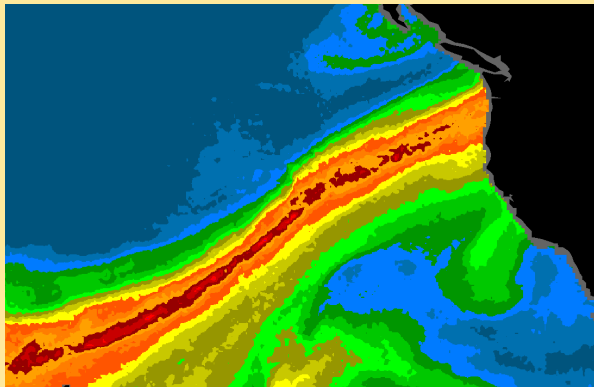
4. **Rail Safety:** Support measures to enhance the safety of rail transportation of hazardous materials with an emphasis on: increased state oversight of railroad bridges; funding for first responder training; funding to improve rail safety and prevent rail trespass fatalities; funding to improve the rail system to address the impacts of Sea Level Rise; improved regulations for tank car safety standards for hazardous materials; funding for enforcement; data sharing requirements between state emergency managers, local responders



and rail operators; support for improved partnerships between state and federal regulators; and addressing the enhanced hazard from incompatible hazardous materials being stored or transported in proximity to each other.

5. **Rural Road Funding Program:** Support the creation of a new program to modernize rural roads consistent with emerging safety, complete streets, active mode policies.
6. **Stormwater Program Funding:** Support additional funding through the EPA to enable compliance with the Clean Water Act.

7. **Surface Transportation Program/Increases in Highway (road/rail) Bridge Funding:** Consistent with the National Association of Counties (NACo) position, regulation changes are needed that allow for direct funding to qualified local jurisdictions to expedite economic benefits, increase purchasing power, and bolster travel, business and economic growth.
8. **Transportation Funding for Disabled, Low-income, and Elderly Persons:** Support increased capital and operations funding, in addition to funding and policy changes that would address local, state, and federally identified needs for coordination improvements.
9. **Flood Risk and Water Supply Forecasting:** Support coordination and funding for the Advanced Quantitative Precipitation Information (AQPI) radar system. <https://psl.noaa.gov/aqpi/>



PRIORITY POLICY STATEMENTS

Formatted: Underline

Climate Change

- ENSURE SUPPORT that the recovery from the COVID-19 pandemic supports funding and policy to implement the following:
 - ✓ Technologies that support the County's climate goals, including battery energy storage and microgrids, solar and wind energy, electric vehicles, and electric vehicle charging infrastructure;
 - ✓ Energy efficiency programs that encourage whole house retrofits and address asthma triggers in the built environment;
 - ✓ Planning work for adapting to rising sea levels;
 - ✓ Planning and implementation of microgrids;
 - ✓ Active transportation and green infrastructure programs;
 - ✓ Job training for careers in clean energy, clean transportation, and green infrastructure.
- SUPPORT legislative and administrative efforts that: address the impacts of climate change; support climate adaptation and resilience efforts; support the Green Business program; address the disproportionate impacts that some communities bear because they are located near sources of exposure such as large industrial facilities, freeways or transportation corridors and/or live in proximity to areas vulnerable to sea-level rise or inland flooding; reduce exposure to toxic air pollutants and reduce greenhouse gases; study and recognize the health impacts of global and regional climate change; and study the economic, workforce and social impacts of transitioning away from fossil fuels.
- SUPPORT the concept of establishing a national price on carbon-based fuels to address the costs to society of emissions from those fuels.



Criminal Justice and Mental Health

- SUPPORT policies and approaches that would enhance the ability of county officials and our partners to prevent and treat mental health and substance use disorders, both in the community and within the confines of the criminal justice system.
- SUPPORT policies and programs that divert non-violent individuals struggling with mental illness and/or substance use disorders from local jails into more appropriate treatment programs.
- SUPPORT legislation and regulations that would amend the federal Medicaid Inmate Exclusion Policy (MIEP) and allow non-convicted individuals to have continued access to necessary treatment through federal health benefits such as Medicaid, Medicare, CHIP and VA health benefits.



The Delta

- **SUPPORT** protection and restoration of a healthy sustainable Delta ecosystem including adequate water quality, inflow and outflow, and water supply, to support fisheries, wildlife and habitat in perpetuity and managing or eradicating invasive species.
- **SAFEGUARD** Delta Counties' responsibilities related to land use, water resources, flood management, tax revenues, public health and safety, economic development, agricultural stability, recreation, and environmental protection in any projects, policies, or operations.
- **SUPPORT** rehabilitation, improvement, and maintenance of levees throughout the Delta.
- **SUPPORT** the Delta pool, in which the common resource provides quality freshwater supply to all Delta users, requiring mutual responsibility to maintain, restore, and protect the common resource.
- **REPRESENT** and include local government in any governance structures for the Delta.
- **OPPOSE** isolated conveyance.

Formatted: Indent: Left: 0.25", No bullets or numbering

Health Care

- **SUPPORT** full funding of the Federal Medicaid program. **OPPOSE** federal efforts to reduce Medicaid funding or restrict access to Medicaid benefits and services. **OPPOSE** federal legislation and administrative efforts to privatize Medicaid and/or to impose work requirements as a condition of Medicaid (Medi-Cal) eligibility.
- **OPPOSE** efforts to repeal the Affordable Care Act or to replace it with any proposals that represent significant, permanent structural alterations to current subsidized segments of the health care system. **SUPPORT** efforts to strengthen the ACA and expand eligibility, regardless of immigration status.



- OPPOSE new block-granting proposals, harsh cuts, or proposals that will significantly and/or permanently shift the structure of health and human service funding and programming that would lead to the restriction or elimination of safety-net programs.
- OPPOSE efforts to eliminate or reduce funding for essential public health services, inclusive of funding for immunization, HIV/Ryan White, Communicable Disease and Tuberculosis Control, Hansen's Disease, Teen Pregnancy, Public Health Preparedness and Maternal Child Health Funding.
- OPPOSE changes to Title X Family Planning Program, enacted in 1970, dedicated solely to providing individuals with comprehensive family planning and related preventive health services.
- ~~OPPOSE efforts to privatize Medicaid and/or impose work requirement as a condition of Medicaid (Medi-Cal) eligibility.~~
- SUPPORT Medicaid (Medi-Cal) funding for same day mental health appointments.
- SUPPORT reauthorization of funding for HIV/Ryan White Care, Maternal Child Health Funding including Maternal Infant Early Childhood Home Visiting (MIECHV), and CHIP (Children's Health Insurance Program).
- SUPPORT legislation and administrative changes that will enhance counties' ability to provide comprehensive Behavioral Health Services.
- PROTECT funding for core local public health and prevention efforts.
- ADVOCATE for federal resources to address local pandemic response efforts, including vaccination efforts, that provide direct allocations to local governments to offset revenue losses and maximize local flexibility for use of such funds.
- SUPPORT legislation and administrative policy changes that will continue into the future the flexibilities in use of Telehealth services.

Formatted: List Paragraph

Homeless Services

- SUPPORT the continuation and expansion of funding for fair and equitable affordable housing, homelessness assistance and prevention programs, and strategic local and regional responses to homelessness that promote transparency, equity and data informed decision-making and enhance access to resources that support the County's compliance with federal and state anti-homelessness and anti-poverty initiatives and requirements.



- SUPPORT increasing and maintaining affordable housing stock and housing stability by way of supporting funding, policy, or regulations that promote fair and equitable housing for the most vulnerable low, very low, and extremely low-income households, including the production and preservation of various housing types and the protection of stable housing for vulnerable persons experiencing homelessness.
- SUPPORT removal of barriers in planning processes, regulatory frameworks, funding programs, healthcare access, and policy to promote increased equity, innovation, transparency and data-driven approaches to addressing homelessness and housing affordability, with the goals of increasing affordable housing and eliminating discrimination and disparate treatment of individuals based on race, ethnicity, gender, gender identify, sexual orientation, ability, housing status, income, or other household characteristics.
- SUPPORT wide variety of housing types and formats, for all persons regardless of personal characteristic or status, and actively promote the equitable distribution and access to affordable units and holistic services, in line with evidence-based practices, to ensure the elimination of discrimination and disparate treatment of individuals, particularly vulnerable individuals and those from communities of color.
- SUPPORT increasing funding, policy, and regulations for disaster planning and relief efforts that allow the County and the County's homeless system to plan for and equitably respond to disasters and pandemics, including for purposes of supporting the health and safety of providers and persons experiencing homelessness, particularly the most vulnerable and those from communities of color.



Human Services

Older Adults and Aging

- OPPOSE elimination or cuts to funding for older adult programs and services. SUPPORT funding for programs that support older adults, veterans, disabled individuals, the homeless, and low-income individuals, especially the most vulnerable in racial minority communities.
- SUPPORT funding and policies to provide older adults with holistic (culturally appropriate) services and treatment modalities that support well-being, health, and mental health.
- SUPPORT health insurance programs that maintain or expand current services and protections under Medicare, Medicaid and the Affordable Care Act (ACA), including – but not limited to – protections for preexisting conditions.
- SUPPORT funding to maintain or increase Social Security.

Formatted: Indent: Left: 0.25"

- ~~SUPPORT funding to maintain~~ SSI and Federal Disability programs.

Safety Net Programs

- SUPPORT ~~reinstatement of the Child Tax Credit.~~
- SUPPORT ~~reevaluation and updates to the Federal Poverty Guidelines.~~
- SUPPORT funding for entitlement programs that help low-income families, especially the ethnic minority communities, to reach self-sufficiency. This includes efforts to expand eligibility to the Earned Income Tax Credit (EITC) program to all tax filers regardless of immigration status.
- SUPPORT funding for retroactive and future COVID-19 related expenses at the state, and ideally, county level, with flexibility to address county-specific needs and ensure protections and the access to treatment modalities in the racial and ethnic communities disproportionately impacted.
-
- SUPPORT the extension of flexibilities and waivers for benefit program administration.
- OPPOSE actions that would result in cost shifts on federal entitlement programs to state and localities or which would result in greater dependency on county-funded programs.
- SUPPORT efforts to increase Supplemental Nutrition Assistance Program (SNAP) benefit amounts to better meet recipients' nutritional needs, adjust SNAP eligibility requirements to include populations with significant need, and remove current federal barriers that prevent some nutrition programs from employing EBT technology.
- OPPOSE efforts to eliminate states' flexibility in taking high cost of living into eligibility determinations; OPPOSE restoration of asset tests for SNAP.
- OPPOSE funding cuts or block granting benefit programs, including SNAP and Medicaid.
- SUPPORT efforts that allow people to apply for benefits while incarcerated. OPPOSE efforts to limit eligibility for individuals with certain criminal records or to impose work requirements on them for benefit programs, including SNAP and Medicaid.
- SUPPORT efforts to eliminate time limits for Temporary Assistance for Needy Families (TANF) recipients and provide families who are working with modest cash assistance grants to supplement low earnings.
- SUPPORT reauthorization and increase the TANF Block Grant. OPPOSE changes to TANF that will require counties to invest new funds to administer the program.
- OPPOSE efforts to restrict allowable state maintenance-of-effort expenditures and end federal efforts to impose a national TANF error rate.

Formatted: Indent: Left: 0.25", No bullets or numbering

Formatted: No bullets or numbering

- SUPPORT federal and state financial assistance to aid county and local government efforts to meet unfunded federal mandates.
- OPPOSE elimination and reduction in funding for programs that help low-income families pay their heating bills and reduce energy bills by making homes more energy efficient, including LIHEAP and ~~WAP~~Weatherization Assistance Program (WAP).

Child Welfare Services

- SUPPORT legislation that increases and protects the safety and well-being of children at risk of abuse, neglect and exploitation.
- OPPOSE the elimination or cuts to funding streams for child welfare programs.
- SUPPORT increasing prevention dollars to help children who are victims of abuse, neglect and exploitation remain safely in their own homes or family-based settings and provide support to their caregivers.
-
- SUPPORT efforts to provide states with financial incentives, as opposed to monetary penalties, and minimize the significant administrative burden associated with child welfare review processes.

Early Childhood Development

- SUPPORT efforts that ensure all children have access to quality care by expanding high quality learning opportunities for children, expanding subsidized childcare and tax credits, increasing new childcare slots, increasing access to home visiting programs, and making funding available for First 5 commissions, increasing wages and supporting infrastructure of ECE programs.
- SUPPORT policies that increase or align eligibility guidelines to ensure more access of services for low income working families to programs such as Head Start.
- OPPOSE actions that would reduce funding for early childhood education, including Head Start and Early Head Start programs.
- SUPPORT funding and initiatives to support children's mental health and studies on the long-term impacts of COVID-19 on the physical and mental health of adults and children

Immigration, Inclusion, and Racial and Ethnic Equity



Formatted: No bullets or numbering

Formatted: Line spacing: Multiple 1.15 li

- OPPOSE actions to repeal DACA (Deferred Action for Childhood Arrivals) as well as legislation and administrative efforts that negatively target immigrants.
- OPPOSE actions which discourage or prevent immigrant populations from accessing public benefits and housing, including ~~proposed any negative~~ changes to the Public Charge ~~rule~~ Final Rule published in September 2022.
- ~~OPPOSE any efforts that would restrict a full Census count from including all residents of the county regardless of immigration status. SUPPORT efforts to fully canvas hard-to-count communities.~~
- SUPPORT the inclusion of historically marginalized communities in the development of housing, workforce and health policies ~~including COVID-19 vaccine allocation strategies and clinical trials.~~
- SUPPORT legislation and administrative actions that address inequities in housing, health (including mental health), education, economic development, reentry and criminal justice.

Formatted: Indent: Left: 0.25", Line spacing: Multiple 1.15 li

Formatted: Indent: Left: 0", First line: 0", Line spacing: Multiple 1.15 li

Formatted: Line spacing: Multiple 1.15 li

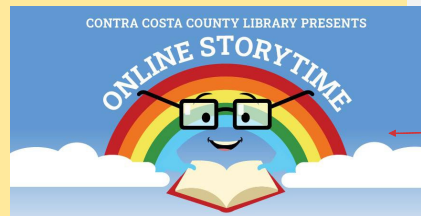
Violence Prevention

- SUPPORT efforts to prevent, interrupt and end gun violence, child abuse, domestic violence, sexual assault, elder abuse and human trafficking in all its forms.
- OPPOSE any elimination and cuts to grant programs for violence prevention, human/labor trafficking, victim services, and federal grants related to the Violence Against Women Act.
- SUPPORT efforts that increase access to cultural responsiveness and language support for victims of crime.
- SUPPORT efforts to protect housing access and employment rights for victims of harassment and survivors of interpersonal violence.
- SUPPORT programs and actions that address suicide, injury and violence prevention.
- SUPPORT efforts aimed at reducing health disparities and inequities associated with violence against women, communities of color, and the LGBTQ+ community.
- SUPPORT increased funding for Lethality Assessment Protocols (LAP) and reallocation strategies to support other prevention programs and social services.



Workforce Development

- SUPPORT policies that meet the needs of serving businesses, workers, job seekers, and youth under the Workforce Innovation & Opportunity Act (WIOA) that preserve local decision-making relative to spending, direction of work, and other functions of local workforce boards.
- SUPPORT establishing a higher minimum wage.
- SUPPORT additional funding for WIOA programs and activities including education, training, apprenticeships, job seeker support, and job placements. SUPPORT additional funding for racial-ethnic minority communities impacted by COVID job loss and displacement.
- SUPPORT policies that increase access to training and education for social workers and staff in Aging, including programs that assist students in obtaining a social work degree.
- SUPPORT policies that drive innovation in training and apprenticeships for jobs of the future and expansion of equitable economic opportunity.
- SUPPORT policies that provide greater access for people with disabilities to participate in programs for training, education, upskilling, and job seeking.



Formatted: List Paragraph, Line spacing: Multiple 1.15 li

Land Use

- SUPPORT legislative efforts to evaluate, clean up and redevelop contaminated sites.

Library Services

- SUPPORT funding for the Institute of Museum and Library Services (IMLS), the primary source of federal support for the nation's approximately 120,000 libraries and 35,000 museums and related organizations.
- SUPPORT the reauthorization and funding for the Library Services and Technology Act (LSTA) including the Museum and Library Services Act.
- SUPPORT federal funding for library renovation and construction projects.

Formatted: List Paragraph, Line spacing: Multiple 1.15 li

Natural Resources/Permit Streamlining

- SUPPORT locally-controlled resource permitting to streamline economic development activities and conserve and recover species and the habitats upon which they depend, natural resources, watersheds and open space.

Pipeline Safety

- SUPPORT legislative efforts that increase the safety of the shipment of hazardous materials by pipeline through better monitoring, technical seismic vulnerability studies, leak detection, operational practices and equipment.

Telecommunications and Broadband

- SUPPORT the expansion of broadband (high speed internet service) and the deployment of emergency technologies, such as small cell 5G, to drive economic development and job opportunities, support county service delivery, and improve health, education and public safety outcomes for residents.
- SUPPORT the restoration of net neutrality to ensure open and nondiscriminatory access to online information.
- SUPPORT preservation of local government ownership and control of the local public rights-of-way and ensure reasonable compensation for their use.
-
- OPPOSE Federal Communications Commission (FCC) rulemaking that would reduce franchise fee obligations which fund community television operations and the General Fund.
- ENSURE nondiscriminatory treatment of Public, Educational and Government (PEG) channels by cable system operators.
- SUPPORT continued funding for PEG channels.
- SUPPORT local decision-making and accountability of local elected officials and OPPOSE any actions that would preempt or limit the zoning and siting authority of local governments.
- SUPPORT extension of Affordable Connectivity Program (ACP) that provides income-eligible individuals and families discounts to internet service and computer equipment. SUPPORT funding for outreach to create awareness of ACP and other opportunities for increased digital access.

Formatted: No bullets or numbering

Formatted: List Paragraph, Line spacing: Multiple 1.15 li

Formatted: List Paragraph, Line spacing: Multiple 1.15 li

Transportation, Mobility Management and Coordination

- SUPPORT and seek opportunities to streamline the regulatory process as well as encourage the development of regulations that are appropriate and flexible.
- SUPPORT policies, programs and funding increases that enable new technologies, practices, and services to improve mobility to vulnerable populations.

- SUPPORT legislative efforts to increase and improve waterborne transportation of goods when it increases safety.

Veterans

- SUPPORT legislation to increase availability, accessibility, and utilization of Veterans Benefits.
- SUPPORT legislation to provide America’s veterans organizations with resources to make necessary repairs to or replacement of their meeting halls and facilities.



- SUPPORT legislation that enhances health care/mental health care in support of veterans.
- SUPPORT legislation that would focus on getting homeless veterans off the street and into housing.

Formatted: List Paragraph, Line spacing: Multiple 1.15 li

Formatted: List Paragraph, Line spacing: Multiple 1.15 li

Waste Management

- SUPPORT legislation that protects human health and the environment from exposure to hazardous materials and hazardous wastes.
- SUPPORT legislative efforts that establish producer responsibility for management of products at the end of their useful life including pharmaceuticals, batteries, sharps, and veterinary medicine.
- SUPPORT legislative efforts that reduce the quantity of harmful pharmaceuticals (including veterinary medicine) that ultimately enter wastewater treatment facilities, bodies of water, and landfills.

