



Health Care for the Homeless

6/27/2022

Heather Cedermaz, MSN, FNP-C Medical Director, Health Care for the Homeless

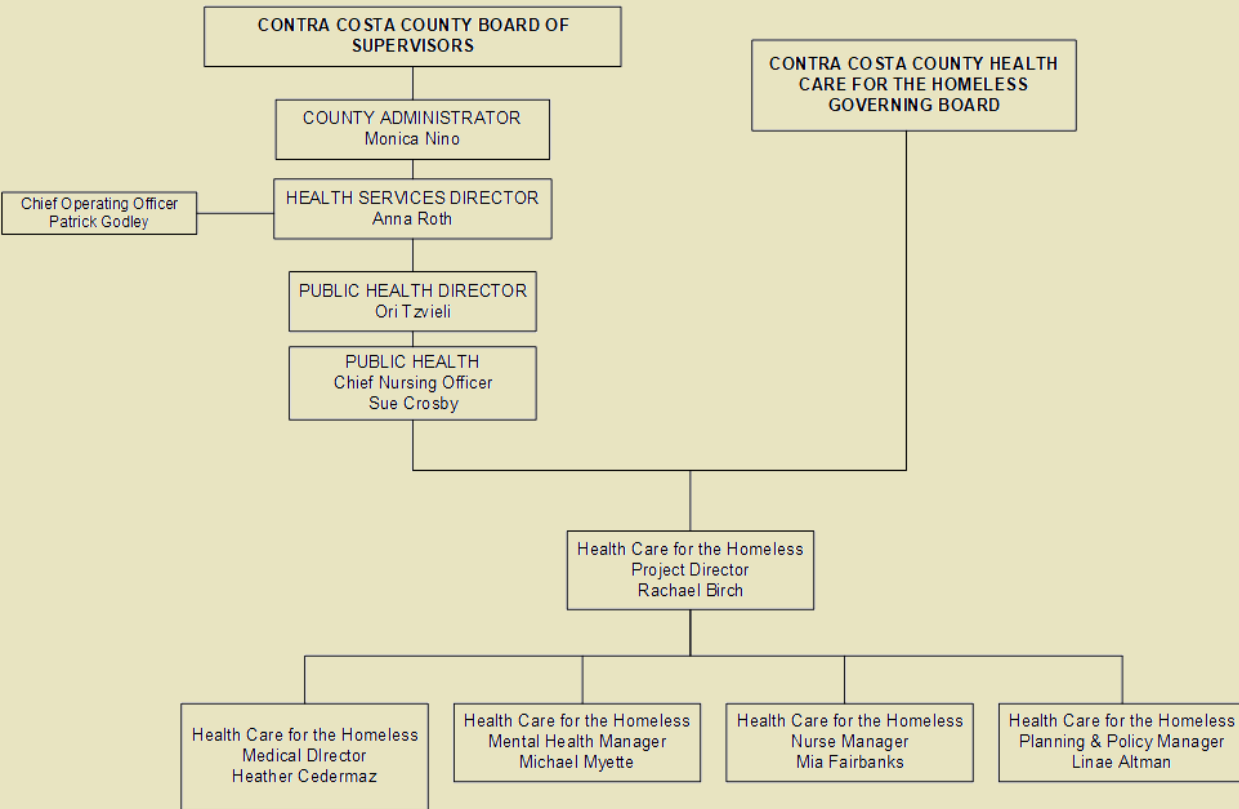
Maria Fairbanks, MSN, RN, PHN, Program Manager Health Care for the Homeless

Agenda

1. HCH Program Overview
2. Mission Statement
3. Operations
4. Strategic Plan and Metrics
5. Collaborations and Access to Services

Program Overview

CONTRA COSTA HEALTH SERVICES



Mission Statement

Contra Costa County Health Services, Health Care for the Homeless program's mission is to **improve the health of the homeless population in Contra Costa County by increasing access to health care** and by providing a team-oriented approach to health care that focuses on **harm reduction and integration of mental health and medical services.**

Population Based Care focused on meeting clients where they are to build trust and support and collaborate with them and their health home to optimize wellness.

Clinic Operations

**All Project Room Key Hotel HCH clinics have closed.
Collaborating with partners on other clinic opportunities.**

Delta Landing – Pittsburg

Largest site – 157 rooms

- PUI rooms
- M-F – RN/CHW
- RN/Provider/Mental Health/Dental

Concord Shelter

- **Respite**
 - RN-Provider M-F
 - Medical management support M-F for most vulnerable patients
 - Dental
 - RN/Provider – Monday and Wednesday

Brookside Shelter – North Richmond

- M/W – 4 hour clinics
- RN/Provider/Mental Health
- Lower census

Mobile Clinics

Monday-8-4: BARM

Tuesday – 8-12: Bay Point - JM

Thursday-1-4: Fulton Ship Yard - JM

Friday- 8-12: Martinez Marina – JM

Mobile Outreach Teams

- 40 hours a week – MH/RN
- RN/Provider-CHW-MH clinician visit encampments throughout the county.
- Collaborations - Local Police Department, CORE, Communicable Disease program Prenatal
- HEPPAC

Strategic Plan

- Strategic Plan includes enhancing transparency and collaboration with all stakeholders
- Improve outcomes on all HRSA Clinical Measures
- Focus on Harm Reduction: Medically Assisted Treatment, Point of Care Testing, Treatment for infectious Disease
- Focus on Vulnerable Senior Population who become homeless as older adults and have diminished capacity
- Continue support for congregate settings to normalize response and management of COVID 19. Vaccination, testing and isolation

HRSA Clinical Measures

Priority Area: Improve outcomes on all HRSA Clinical Measures

- On track to return to pre-pandemic rates following 2020 declines
 - 15% increase in Colorectal Cancer Screening
 - 6% increase in Breast Cancer Screening
 - 20% increase in Depression Screening and Follow Up Care

Harm Reduction & Medication Assisted Treatment

Priority Area: Increase availability for addiction treatment in all HCH Clinics

- Reduce barriers to treatment and recovery support
 - 100% of HCH Providers Waivered to prescribed Buprenorphine
 - 87% of HCH patients with an opioid use disorder were offered MAT services during the year
 - 81% received at least 1 MAT prescription during the year

Aging Homeless Adults

- **Priority Area: Focus on Vulnerable Senior Population who become homeless as older adults and have diminished capacity**
- Implement new strategic plan initiatives to serve the aging homeless
 - 26% Increase in patients age 65+ seen by HCH in the last year
 - New workflows to identify & serve patients with decreased cognitive capacity
 - Implement monthly high acuity case rounds for patients with decreased capacity in collaboration with H3

COVID-19 Response

- **Priority Area: Continued Support for COVID-19 Response**
- Direct Service Provider for COVID-19 Testing, Vaccination, & Safe Isolation
 - Nearly 10,000 tests administered to Contra Costa homeless
 - Over 4,800 persons experiencing homeless fully vaccinated
 - PUI hotel continuing to house an average of 20 patients a day in 2022

How to Reach Us and Learn More

- <https://cchealth.org/healthcare-for-homeless/>
- Warm Line: 925-608-5276—Community Health Worker M-F: 8-4
 - General services questions, appointment assistance for HCH requiring timely response
- Health Care for the Homeless Main Number – 925-608-5300
- hch@cchealth.org general questions, less urgent, client coordination questions
- 211—Access to CORE—single entry for housing