

**SUBDIVISION 9590
"LAFAYETTE OAKS - PHASE 2"**

ALL OF PARCEL A, AS SHOWN ON THAT CERTAIN
SUBDIVISION MAP ENTITLED "LAFAYETTE OAKS—PHASE 1,
SUBDIVISION NO. 9442" FILED FOR RECORD ON NOVEMBER 2,
2020, IN BOOK 544 OF MAPS, AT PAGE 11-18 OFFICIAL
RECORDS OF CONTRA COSTA COUNTY

**CONTRA COSTA COUNTY, CALIFORNIA
MARCH - 2022**



ALIQUOT
CIVIL ENGINEERS
TRAFFIC ENGINEERS
LAND SURVEYORS

Aliquot Associates, Inc.
1390 S. Main St. - Bldg. 310
Walnut Creek, CA 94598
Tel: (925) 938-6000
Fax: (925) 978-2330

ZONING ADMINISTRATOR'S STATEMENT

I HEREBY STATE THAT THE ZONING ADMINISTRATOR OF THE COUNTY OF CONTRA COSTA
STATE OF CALIFORNIA HAS APPROVED THE TENTATIVE MAP OF THIS SUBDIVISION UPON
WHICH THIS FINAL MAP IS BASED.

ARUNA BHAT
DEPUTY DIRECTOR
DEPARTMENT OF CONSERVATION AND DEVELOPMENT
COMMUNITY DEVELOPMENT DIVISION

BY: *Aruna Bhat*
DATED: *March 24*, 2022

CLERK OF THE BOARD OF SUPERVISORS CERTIFICATE

STATE OF CALIFORNIA
COUNTY OF CONTRA COSTA

I, MONICA NIÑO, CLERK OF THE BOARD OF SUPERVISORS AND COUNTY ADMINISTRATOR
OF THE COUNTY OF CONTRA COSTA, STATE OF CALIFORNIA, DO HEREBY CERTIFY THAT
THE ABOVE AND FOREGOING MAP ENTITLED "SUBDIVISION 9590 LAFAYETTE OAKS—PHASE 2,
SUBDIVISION NO. 9442" WAS PREPARED AND SUBMITTED TO THE BOARD OF
SUPERVISORS AS PROVIDED BY LAW, AT A REGULAR MEETING THEREOF HELD ON
DAY OF _____, 2022, AND THAT SAID BOARD OF
SUPERVISORS DID THEREUPON BY RESOLUTION DULY PASSED AND ADOPTED AT SAID
MEETING, APPROVE SAID MAP AND DID ACCEPT SUBJECT TO INSTALLATION AND
ACCEPTANCE OF IMPROVEMENTS ON BEHALF OF THE PUBLIC ALL OF THE PARCELS OR
EASEMENTS SHOWN THEREON AS DEDICATED TO PUBLIC USE.

I FURTHER CERTIFY THAT ALL TAX LIENS HAVE BEEN SATISFIED AND THAT ALL BONDS AS
REQUIRED BY LAW TO ACCOMPANY THIS MAP HAVE BEEN APPROVED BY THE BOARD OF
SUPERVISORS OF CONTRA COSTA COUNTY, AND FILED IN MY OFFICE.

IN WITNESS WHEREOF, I HAVE HEREUNTO SET MY HAND THIS _____ DAY OF
_____, 2022.

MONICA NIÑO
CLERK OF THE BOARD OF SUPERVISORS
AND COUNTY ADMINISTRATOR

BY: _____
DEPUTY CLERK

BUILDING INSPECTION STATEMENT

A GEOTECHNICAL INVESTIGATION REPORT, PREPARED BY THE STEVENS FERRONE & BAILEY
ENGINEERING COMPANY, INC., DATED JUNE, 2014, SFB PROJECT NO. 633-1 HAS BEEN
RECEIVED AND APPROVED. THE REPORT IS ON FILE IN THE DEPARTMENT OF
CONSERVATION AND DEVELOPMENT, CONTRA COSTA COUNTY.

JASON CRAPO
DEPUTY DIRECTOR
DEPARTMENT OF CONSERVATION AND DEVELOPMENT
BUILDING INSPECTION DIVISION

BY: *Jason Crapo*
DATED: *4/25*, 2022

SUBDIVISION 9590

"LAFAYETTE OAKS - PHASE 2"

ALL OF PARCEL A, AS SHOWN ON THAT CERTAIN SUBDIVISION MAP ENTITLED "LAFAYETTE OAKS-PHASE 1, SUBDIVISION NO. 9442" FILED FOR RECORD ON NOVEMBER 2, 2020, IN BOOK 544 OF MAPS, AT PAGE 11-18 OFFICIAL RECORDS OF CONTRA COSTA COUNTY

CONTRA COSTA COUNTY, CALIFORNIA
MARCH - 2022



**ALIQUOT ENGINEERS
LAND SURVEYORS**
Civil Engineers
Traffic Engineers
Allyquot Associates, Inc.
1900 S. Main St., Ste. 310
Hayward, CA 94504
Telephone: (925) 476-2300
Fax: (925) 476-2350

LEGEND

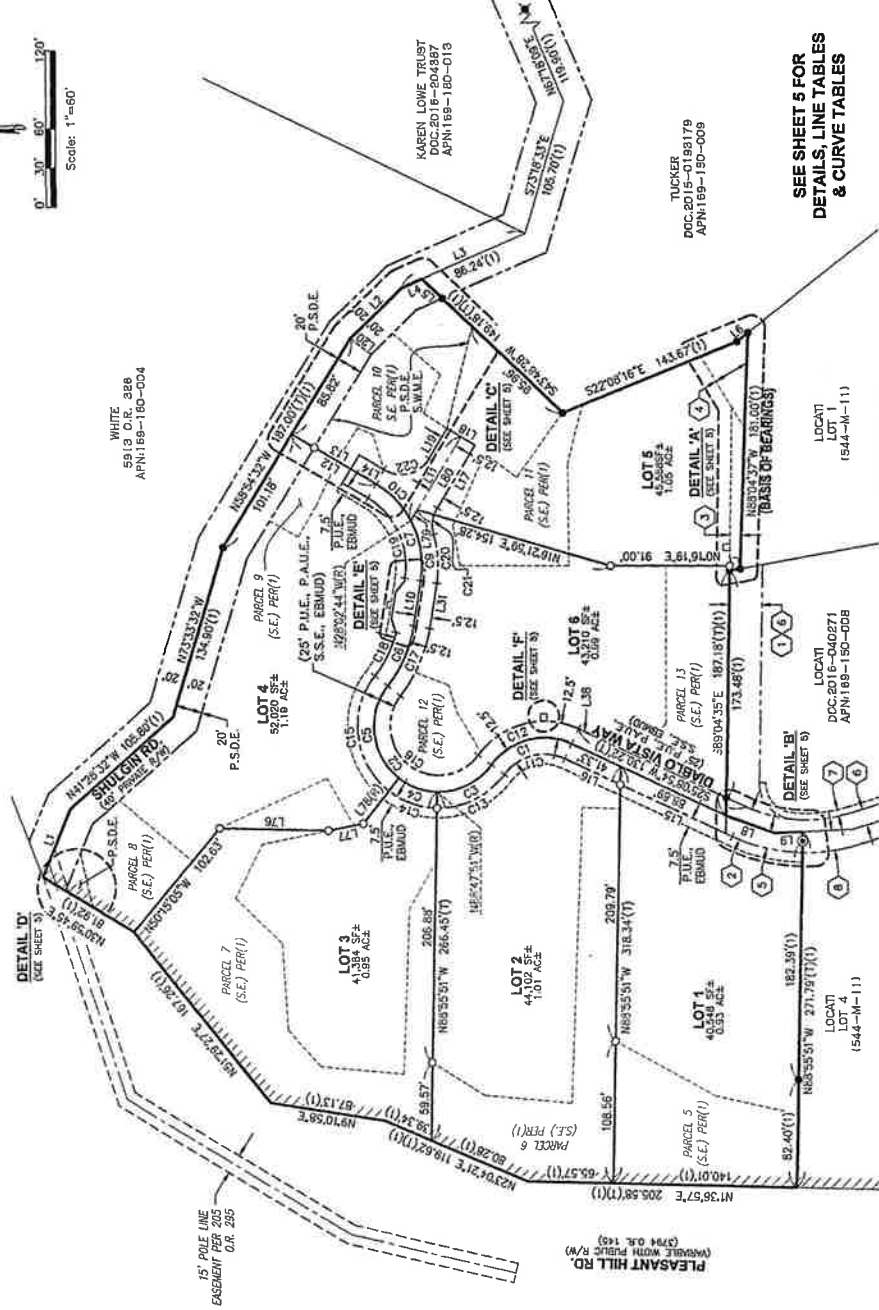
- PROPERTY LINE
- ADJACENT PROPERTY LINE
- CENTERLINE
- RIGHT-OF-WAY LINE/ACCESS EASEMENT
- EXISTING EASEMENT LINE (AS NOTED)
- PROPOSED EASEMENT LINE (AS NOTED)
- BOUNDARY TIE LINE
- RELINQUISHMENT OF ADJUTER'S RIGHTS, AND PRIVATE ACCESS PROHIBITED
- FOUND STANDARD STREET MONUMENT PER (1)
- 4210' PER (1)
- FOUND 1" IRON PIPE WITH NO TAG PER (1)
- SET 1/2" REBAR WITH CAP STAMPED "L.S. 4210" ACRES
- DOCUMENT NUMBER
- EAST BAY MUNICIPAL UTILITY DISTRICT MONUMENT TO MONUMENT
- OFFICIAL RECORDS OF CONTRA COSTA COUNTY
- PUBLIC UTILITY EASEMENT
- PRIVATE ACCESS & UTILITY EASEMENT
- PRIVATE STORM DRAIN EASEMENT
- RECORD DATA
- SCENIC EASEMENT
- 5'
- S.S.E.
- SANITARY SEWER EASEMENT
- STORMWATER MANAGEMENT EASEMENT
- TOTAL
- EXISTING EASEMENT REFERENCE NUMBER (SEE SHEET 3)

EXISTING EASEMENT REFERENCE LIST

1. PARCEL 2 ACCESS & UTILITY EASEMENT APPURTENANT TO RESULTANT LOT 1 PER DOCUMENT NO.: 2015-0193180.
2. INGRESS/EGRESS & WATERLINE EASEMENT GRANTED TO EBMUD PER DOCUMENT NO.: 2016-0040987.
3. P.A.U.E (C) PER "LAFAYETTE OAKS-PHASE 1" SUBDIVISION NO. 9442 FILED FOR RECORD ON NOVEMBER 2, 2020 IN BOOK 544 OF MAPS, AT PAGES 11-18.
4. P.S.D.E. PER "LAFAYETTE OAKS-PHASE 1" SUBDIVISION NO. 9442 FILED FOR RECORD ON NOVEMBER 2, 2020 IN BOOK 544 OF MAPS, AT PAGES 11-18.
5. P.A.U.E (A) PER "LAFAYETTE OAKS-PHASE 1" SUBDIVISION NO. 9442 FILED FOR RECORD ON NOVEMBER 2, 2020 IN BOOK 544 OF MAPS, AT PAGES 11-18.
6. RESERVATION FOR ACCESS & UTILITY EASEMENT PER DOCUMENT NO.: 2016-0040271.
7. RESERVATION FOR 5' PUBLIC UTILITY EASEMENT PER DOCUMENT NO.: 2016-0040271.
8. PARCEL 2 ACCESS & UTILITY EASEMENT PER DOCUMENT NO.: 2016-0040271.

SURVEYOR'S NOTES

1. THE SUBDIVISION BOUNDARY AS SHOWN HEREON CONTAINS 6.13 ACRES, MORE OR LESS.
2. ALL DISTANCES SHOWN HEREON ARE GROUND DISTANCES, AND ARE IN U.S. SURVEY FEET AND DECIMALS THEREOF.
3. THE SUBDIVISION BOUNDARY AS SHOWN HEREON IS BASED ON THAT CERTAIN SUBDIVISION MAP ENTITLED "LAFAYETTE OAKS-PHASE 1" SUBDIVISION NO. 9442 FILED FOR RECORD ON NOVEMBER 2, 2020 IN BOOK 544 OF MAPS, AT PAGE 11-18.



SEE SHEET 5 FOR
DETAILS, LINE TABLES
& CURVE TABLES

TUCKER
DOC.2015-0189179
APN:169-150-009

LOCATI
LOT 1
(1544-11-11)

LOCATI
DOC.2016-040271
APN:169-150-008

APN: 169-150-014

BASIS OF BEARINGS
THE BASIS OF BEARINGS FOR THIS SURVEY IS NORTH BE04°37' WEST AS DETERMINED BY FOUND MONUMENTS ALONG THE NORTH LINE OF LOT 1 AS SHOWN ON THAT CERTAIN SUBDIVISION MAP ENTITLED "LAFAYETTE OAKS PHASE-1" SUBDIVISION NO. 9442 FILED FOR RECORD IN BOOK 544 OF MAPS, AT PAGES 11-18 OFFICIAL RECORDS OF CONTRA COSTA COUNTY.

RECORD REFERENCES

- (1) "LAFAYETTE OAKS PHASE-1" SUBDIVISION 9442 BOOK 544 OF MAPS, AT PAGE 11-18 DATED: NOVEMBER 2ND, 2020

RECORD REFERENCES

- (1) "LAFAYETTE OAKS PHASE-1" SUBDIVISION 9442, BOOK 544 OF MAPS, AT PAGE 11-18 DATED: NOVEMBER 2, 2020

SCENIC EASEMENT CURVE TABLE

CURVE #	RADIUS	DELTA	LENGTH	CHORD BEARING	CHORD LENGTH
C16	37.50'	181°56'56"	119.09'	S37°12'44"W	74.89'
C25	62.50'	75°59'35"	82.90'	N12°50'54"W	76.95'
C26	62.50'	2°55'03"	3.18'	N82°18'13"W	3.18'
C27	112.50'	18°02'15"	35.42'	S71°47'11"E	35.27'
C28	112.50'	10°57'15"	21.51'	S57°17'26"E	21.48'
C22	25.50'	89°54'59"	40.02'	S13°48'33"E	36.04'

SCENIC EASEMENT SHEET

WHITE
5913 O.R. 366
APN:109-180-004

SUBDIVISION 9590
"LAFAYETTE OAKS - PHASE 2"
ALL OF PARCEL A, AS SHOWN ON THAT CERTAIN SUBDIVISION MAP ENTITLED "LAFAYETTE OAKS-PHASE 1, SUBDIVISION NO. 9442," FILED FOR RECORD ON NOVEMBER 2, 2020, IN BOOK 544 OF MAPS, AT PAGE 11-18. OFFICIAL RECORDS OF CONTRA COSTA COUNTY

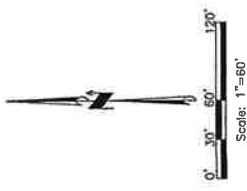
CONTRA COSTA COUNTY, CALIFORNIA
MARCH ~ 2022

ALIQUOT
CIVIL ENGINEERS
TRAFFIC ENGINEERS
LAND SURVEYORS

Aliquot Associates, Inc.
1390 S. Main St., Ste. 310
Walnut Creek, CA 94596
Tel: (925) 938-6600
Fax: (925) 476-2830

LEGEND

- PROPERTY LINE
- ADJACENT PROPERTY LINE
- CENTERLINE
- RIGHT-OF-WAY LINE/ACCESS EASEMENT
- EXISTING EASEMENT LINE (AS NOTED)
- PROPOSED EASEMENT LINE (AS NOTED)
- BOUNDARY TIE LINE
- RELINQUISHMENT OF ABUTTER'S RIGHTS, AND PRIVATE ACCESS PROHIBITED
- FOUND STANDARD STREET MONUMENT PER (1)
- FOUND 1/2" REBAR WITH CAP STAMPED "L.S. 4210" PER (1)
- FOUND 1" IRON PIPE WITH NO TAG PER (1)
- SET 1/2" REBAR WITH CAP STAMPED "L.S. 4210"
- ACRES
- AC
- DOC.
- EMUD
- (M-W)
- (M-W)
- P.U.E.
- P.A.O.E.
- P.S.O.E.
- (1)
- (S.E.)
- S.F.
- S.S.E.
- SW/4E
- (7)
- (1)



SCENIC EASEMENT LINE TABLE

LINE #	DIRECTION	LENGTH
L40	S80°10'38"W	31.34'
L41(T)	N65°33'56"W	50.35'
L42	N53°41'3"W	9.13'
L43	N85°53'3"E	27.95'
L44	N54°14'12"W	60.55'
L45	S33°37'29"W	21.48'
L46	N66°33'12"E	32.16'
L47	N40°47'53"E	48.66'
L48	N23°36'32"W	21.76'
L49	N44°03'32"W	25.85'
L50	N44°03'32"W	23.25'
L51	N58°54'32"W	83.24'
L52	N58°54'32"W	65.46'

LINE #	DIRECTION	LENGTH
L53	N58°54'32"W	65.46'
L54	S09°54'32"W	24.89'
L55	S61°12'21"E	26.96'
L56	S85°18'17"E	38.19'
L57	S24°13'43"W	12.82'
L58	S73°03'51"W	28.19'
L59	S21°22'15"W	27.62'
L60	S72°53'54"W	22.89'
L61	S58°41'33"W	33.89'
L62	S25°09'54"W	52.39'
L63	S25°09'54"W	72.20'

SCENIC EASEMENT LINE TABLE

LINE #	DIRECTION	LENGTH
L64	S80°10'38"W	31.34'
L65	N65°33'56"W	50.35'
L66	N53°41'3"W	9.13'
L67	N85°53'3"E	27.95'
L68	N54°14'12"W	60.55'
L69	S33°37'29"W	21.48'
L70	N66°33'12"E	32.16'
L71	N40°47'53"E	48.66'
L72	N23°36'32"W	21.76'
L73	N44°03'32"W	25.85'
L74	N44°03'32"W	23.25'
L75	N58°54'32"W	83.24'
L76	N58°54'32"W	65.46'

SCENIC EASEMENT LINE TABLE

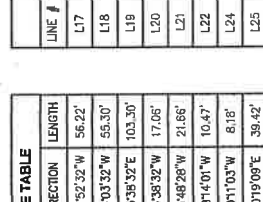
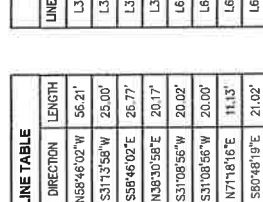
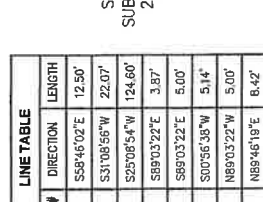
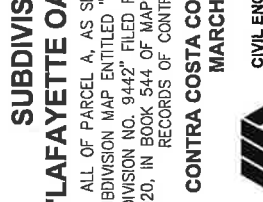
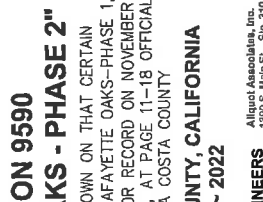
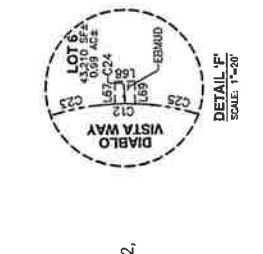
LINE #	DIRECTION	LENGTH
L77	N22°08'16"W	143.87'(T)
L78	S89°04'35"E	187.16'(T)
L79	N89°04'35"E	187.16'(T)
L80	S89°04'35"E	187.16'(T)
L81	N89°04'35"E	187.16'(T)
L82	S89°04'35"E	187.16'(T)
L83	N89°04'35"E	187.16'(T)
L84	S89°04'35"E	187.16'(T)
L85	N89°04'35"E	187.16'(T)
L86	S89°04'35"E	187.16'(T)
L87	N89°04'35"E	187.16'(T)
L88	S89°04'35"E	187.16'(T)
L89	N89°04'35"E	187.16'(T)
L90	S89°04'35"E	187.16'(T)
L91	N89°04'35"E	187.16'(T)
L92	S89°04'35"E	187.16'(T)
L93	N89°04'35"E	187.16'(T)
L94	S89°04'35"E	187.16'(T)
L95	N89°04'35"E	187.16'(T)
L96	S89°04'35"E	187.16'(T)
L97	N89°04'35"E	187.16'(T)
L98	S89°04'35"E	187.16'(T)
L99	N89°04'35"E	187.16'(T)
L100	S89°04'35"E	187.16'(T)
L101	N89°04'35"E	187.16'(T)
L102	S89°04'35"E	187.16'(T)
L103	N89°04'35"E	187.16'(T)
L104	S89°04'35"E	187.16'(T)
L105	N89°04'35"E	187.16'(T)
L106	S89°04'35"E	187.16'(T)
L107	N89°04'35"E	187.16'(T)
L108	S89°04'35"E	187.16'(T)
L109	N89°04'35"E	187.16'(T)
L110	S89°04'35"E	187.16'(T)
L111	N89°04'35"E	187.16'(T)
L112	S89°04'35"E	187.16'(T)
L113	N89°04'35"E	187.16'(T)
L114	S89°04'35"E	187.16'(T)
L115	N89°04'35"E	187.16'(T)
L116	S89°04'35"E	187.16'(T)
L117	N89°04'35"E	187.16'(T)
L118	S89°04'35"E	187.16'(T)
L119	N89°04'35"E	187.16'(T)
L120	S89°04'35"E	187.16'(T)
L121	N89°04'35"E	187.16'(T)
L122	S89°04'35"E	187.16'(T)
L123	N89°04'35"E	187.16'(T)
L124	S89°04'35"E	187.16'(T)
L125	N89°04'35"E	187.16'(T)
L126	S89°04'35"E	187.16'(T)
L127	N89°04'35"E	187.16'(T)
L128	S89°04'35"E	187.16'(T)
L129	N89°04'35"E	187.16'(T)
L130	S89°04'35"E	187.16'(T)
L131	N89°04'35"E	187.16'(T)
L132	S89°04'35"E	187.16'(T)
L133	N89°04'35"E	187.16'(T)
L134	S89°04'35"E	187.16'(T)
L135	N89°04'35"E	187.16'(T)
L136	S89°04'35"E	187.16'(T)
L137	N89°04'35"E	187.16'(T)
L138	S89°04'35"E	187.16'(T)
L139	N89°04'35"E	187.16'(T)
L140	S89°04'35"E	187.16'(T)
L141	N89°04'35"E	187.16'(T)
L142	S89°04'35"E	187.16'(T)
L143	N89°04'35"E	187.16'(T)
L144	S89°04'35"E	187.16'(T)
L145	N89°04'35"E	187.16'(T)
L146	S89°04'35"E	187.16'(T)
L147	N89°04'35"E	187.16'(T)
L148	S89°04'35"E	187.16'(T)
L149	N89°04'35"E	187.16'(T)
L150	S89°04'35"E	187.16'(T)
L151	N89°04'35"E	187.16'(T)
L152	S89°04'35"E	187.16'(T)
L153	N89°04'35"E	187.16'(T)
L154	S89°04'35"E	187.16'(T)
L155	N89°04'35"E	187.16'(T)
L156	S89°04'35"E	187.16'(T)
L157	N89°04'35"E	187.16'(T)
L158	S89°04'35"E	187.16'(T)
L159	N89°04'35"E	187.16'(T)
L160	S89°04'35"E	187.16'(T)
L161	N89°04'35"E	187.16'(T)
L162	S89°04'35"E	187.16'(T)
L163	N89°04'35"E	187.16'(T)
L164	S89°04'35"E	187.16'(T)
L165	N89°04'35"E	187.16'(T)
L166	S89°04'35"E	187.16'(T)
L167	N89°04'35"E	187.16'(T)
L168	S89°04'35"E	187.16'(T)
L169	N89°04'35"E	187.16'(T)
L170	S89°04'35"E	187.16'(T)
L171	N89°04'35"E	187.16'(T)
L172	S89°04'35"E	187.16'(T)
L173	N89°04'35"E	187.16'(T)
L174	S89°04'35"E	187.16'(T)
L175	N89°04'35"E	187.16'(T)
L176	S89°04'35"E	187.16'(T)
L177	N89°04'35"E	187.16'(T)
L178	S89°04'35"E	187.16'(T)
L179	N89°04'35"E	187.16'(T)
L180	S89°04'35"E	187.16'(T)
L181	N89°04'35"E	187.16'(T)
L182	S89°04'35"E	187.16'(T)
L183	N89°04'35"E	187.16'(T)
L184	S89°04'35"E	187.16'(T)
L185	N89°04'35"E	187.16'(T)
L186	S89°04'35"E	187.16'(T)
L187	N89°04'35"E	187.16'(T)
L188	S89°04'35"E	187.16'(T)
L189	N89°04'35"E	187.16'(T)
L190	S89°04'35"E	187.16'(T)
L191	N89°04'35"E	187.16'(T)
L192	S89°04'35"E	187.16'(T)
L193	N89°04'35"E	187.16'(T)
L194	S89°04'35"E	187.16'(T)
L195	N89°04'35"E	187.16'(T)
L196	S89°04'35"E	187.16'(T)
L197	N89°04'35"E	187.16'(T)
L198	S89°04'35"E	187.16'(T)
L199	N89°04'35"E	187.16'(T)
L200	S89°04'35"E	187.16'(T)

SCENIC EASEMENT LINE TABLE

LINE #	DIRECTION	LENGTH
L201	N22°08'16"W	143.87'(T)
L202	S89°04'35"E	187.16'(T)
L203	N89°04'35"E	187.16'(T)
L204	S89°04'35"E	187.16'(T)
L205	N89°04'35"E	187.16'(T)
L206	S89°04'35"E	187.16'(T)
L207	N89°04'35"E	187.16'(T)
L208	S89°04'35"E	187.16'(T)
L209	N89°04'35"E	187.16'(T)
L210	S89°04'35"E	187.16'(T)
L211	N89°04'35"E	187.16'(T)
L212	S89°04'35"E	187.16'(T)
L213	N89°04'35"E	187.16'(T)
L214	S89°04'35"E	187.16'(T)
L215	N89°04'35"E	187.16'(T)
L216	S89°04'35"E	187.16'(T)
L217	N89°04'35"E	187.16'(T)
L218	S89°04'35"E	187.16'(T)
L219	N89°04'35"E	187.16'(T)
L220	S89°04'35"E	187.16'(T)
L221	N89°04'35"E	187.16'(T)
L222	S89°04'35"E	187.16'(T)
L223	N89°04'35"E	187.16'(T)
L224	S89°04'35"E	187.16'(T)
L225	N89°04'35"E	187.16'(T)
L226	S89°04'35"E	187.16'(T)
L227	N89°04'35"E	187.16'(T)
L228	S89°04'35"E	187.16'(T)
L229	N89°04'35"E	187.16'(T)
L230	S89°04'35"E	187.16'(T)
L231	N89°04'35"E	187.16'(T)
L232	S89°04'35"E	187.16'(T)
L233	N89°04'35"E	187.16'(T)
L234	S89°04'35"E	187.16'(T)
L235	N89°04'35"E	187.16'(T)
L236	S89°04'35"E	187.16'(T)
L237	N89°04'35"E	187.16'(T)
L238	S89°04'35"E	187.16'(T)
L239	N89°04'35"E	187.16'(T)
L240	S89°04'35"E	187.16'(T)
L241	N89°04'35"E	187.16'(T)
L242	S89°04'35"E	187.16'(T)
L243	N89°04'35"E	187.16'(T)
L244	S89°04'35"E	187.16'(T)
L245	N89°04'35"E	187.16'(T)
L246	S89°04'35"E	187.16'(T)
L247	N89°04'35"E	187.16'(T)
L248	S89°04'35"E	187.16'(T)
L249	N89°04'35"E	187.16'(T)
L250	S89°04'35"E	187.16'(T)
L251	N89°04'35"E	187.16'(T)
L252	S89°04'35"E	187.16'(T)
L253	N89°04'35"E	187.16'(T)
L254	S89°04'35"E	187.16'(T)
L255	N89°04'35"E	187.16'(T)
L256	S89°04'35"E	187.16'(T)
L257	N89°04'35"E	187.16'(T)
L258	S89°04'35"E	187.16'(T)
L259	N89°04'35"E	187.16'(T)
L260	S89°04'35"E	187.16'(T)
L261	N89°04'35"E	187.16'(T)
L262	S89°04'35"E	187.16'(T)
L263	N89°04'35"E	187.16'(T)
L264	S89°04'35"E	187.16'(T)
L265	N89°04'35"E	187.16'(T)
L266	S89°04'35"E	187.16'(T)
L267	N89°04'35"E	187.16'(T)
L268	S89°04'35"E	187.16'(T)
L269	N89°04'35"E	187.16'(T)
L270	S89°04'35"E	187.16'(T)
L271	N89°04'35"E	187.16'(T)
L272	S89°04'35"E	187.16'(T)
L273	N89°04'35"E	187.16'(T)
L274	S89°04'35"E	187.16'(T)
L275	N89°04'35"E	187.16'(T)
L276	S89°04'35"E	187.16'(T)
L277	N89°04'35"E	187.16'(T)
L278	S89°04'35"E	187.16'(T)
L279	N89°04'35"E	187.16'(T)
L280	S89°04'35"E	187.16'(T)
L281	N89°04'35"E	187.16'(T)
L282	S89°04'35"E	187.16'(T)
L283	N89°04'35"E	187.16'(T)
L284	S89°04'35"E	187.16'(T)
L285	N89°04'35"E	187.16'(T)
L286	S89°04'35"E	187.16'(T)
L287	N89°04'35"E	187.16'(T)
L288	S89°04'35"E	187.16'(T)
L289	N89°04'35"E	187.16'(T)
L290	S89°04'35"E	187.16'(T)
L291	N89°04'35"E	187.16'(T)
L292	S89°04'35"E	187.16'(T)
L293	N89°04'35"E	187.16'(T)
L294	S89°04'35"E	187.1

LEGEND

- PROPERTY LINE
- ADJACENT PROPERTY LINE
- CENTERLINE
- RIGHT-OF-WAY LINE/ACCESS EASEMENT
- EXISTING EASEMENT LINE (AS NOTED)
- PROPOSED EASEMENT LINE (AS NOTED)
- BOUNDARY TIE LINE
- RELINQUISHMENT OF ABUTTER'S RIGHTS, AND PRIVATE ACCESS PROHIBITED
- FOUND STANDARD STREET MONUMENT PER (1)
- FOUND 1/2" REBAR WITH CAP STAMPED "L.S. 4210" PER (1)
- FOUND 1" IRON PIPE WITH NO TAG PER (1)
- SET 1/2" REBAR WITH CAP STAMPED "L.S. 4210"
- ACRES
- DOCUMENT NUMBER
- EAST BAY MUNICIPAL UTILITY DISTRICT MONUMENT TO MONUMENT
- OFFICIAL RECORDS OF CONTRA COSTA COUNTY
- PUBLIC UTILITY EASEMENT
- PRIVATE ACCESS & UTILITY EASEMENT
- PRIVATE STORM DRAIN EASEMENT
- RECORD DATA
- SCENIC EASEMENT
- SQUARE FEET
- SANITARY SEWER EASEMENT
- STORMWATER MANAGEMENT EASEMENT
- TOTAL
- EXISTING EASEMENT REFERENCE NUMBER (SEE SHEET 3)



RECORD REFERENCES

- (1) "LAFAYETTE OAKS PHASE-1", SUBDIVISION 9442 BOOK 544 OF MAPS, AT PAGE 11-18 DATED: NOVEMBER 2, 2020

APPLICABLE CODES

- CONTRA COSTA COUNTY ZONING ORDINANCE
- CONTRA COSTA COUNTY SUBDIVISION MAP ACT
- CONTRA COSTA COUNTY PUBLIC UTILITIES ACT
- CONTRA COSTA COUNTY STORMWATER MANAGEMENT ORDINANCE
- CONTRA COSTA COUNTY SANITARY SEWER ORDINANCE
- CONTRA COSTA COUNTY SCENIC EASEMENT ORDINANCE
- CONTRA COSTA COUNTY PRIVATE ACCESS & UTILITY EASEMENT ORDINANCE
- CONTRA COSTA COUNTY PRIVATE STORM DRAIN EASEMENT ORDINANCE
- CONTRA COSTA COUNTY RELINQUISHMENT OF ABUTTER'S RIGHTS AND PRIVATE ACCESS PROHIBITED ORDINANCE
- CONTRA COSTA COUNTY FOUND STANDARD STREET MONUMENT PER (1)
- CONTRA COSTA COUNTY FOUND 1/2" REBAR WITH CAP STAMPED "L.S. 4210" PER (1)
- CONTRA COSTA COUNTY FOUND 1" IRON PIPE WITH NO TAG PER (1)
- CONTRA COSTA COUNTY SET 1/2" REBAR WITH CAP STAMPED "L.S. 4210"

PROJECT INFORMATION

ALIQUOT
CIVIL ENGINEERS
TRAFFIC ENGINEERS
LAND SURVEYORS

Aliquot Associates, Inc.
10000 Wilcox Road, Suite 200
Walnut Creek, CA 94598
Telephone: (925) 478-2300
Fax: (925) 478-2380

CONTRA COSTA COUNTY, CALIFORNIA
MARCH ~ 2022

SUBDIVISION 9590
"LAFAYETTE OAKS - PHASE 2"

ALL OF PARCEL A, AS SHOWN ON THAT CERTAIN SUBDIVISION MAP ENTITLED "LAFAYETTE OAKS - PHASE 1, SUBDIVISION NO. 9442" FILED FOR RECORD ON NOVEMBER 2, 2020, IN BOOK 544 OF MAPS, AT PAGE 11-18 OFFICIAL RECORDS OF CONTRA COSTA COUNTY

APN: 189-150-014

SHEET 5 OF 6

LINE TABLE

LINE #	DIRECTION	LENGTH
L35	S58°46'02"E	12.50'
L36	S31°08'56"W	22.07'
L38	S25°08'54"W	124.60'
L39	S89°03'22"E	3.97'
L64	S89°03'22"E	5.00'
L65	S00°56'38"W	5.14'
L66	N89°03'22"W	5.00'
L67	N89°46'19"E	8.42'
L68	S00°13'41"E	11.00'
L69	S89°46'19"W	8.42'
L70(T)	N80°48'19"W	35.15'
L71	S80°48'19"E	10.63'
L72	N09°11'41"E	3.00'
L73	S80°48'19"E	5.00'
L74	S09°11'41"W	3.00'
L75	S00°48'19"E	19.51'
L76	S01°30'41"W	82.63'
L77	N12°28'40"W	26.65'
L78(R)	S51°57'26"E	44.16'
L79	S58°46'02"E	9.71'
L80	N58°46'02"W	85.31'

LINE #	DIRECTION	LENGTH
L17	N85°46'02"W	56.21'
L18	S31°13'58"W	25.00'
L19	S58°46'02"E	26.77'
L20	N38°30'58"E	20.17'
L21	S31°08'56"W	20.02'
L22	S31°08'56"W	20.00'
L24	N71°18'16"E	11.13'
L25	S80°48'19"E	21.02'
L26	S48°50'29"E	10.69'
L27	S90°48'19"E	2.29'
L28	N00°56'38"E	5.14'
L29	S89°03'22"E	11.56'
L31	N80°48'19"W	35.15'
L32	S80°48'19"E	35.15'
L33	N31°08'56"E	22.65'
L34	S58°46'02"E	12.50'

LINE #	DIRECTION	LENGTH
L1	N67°52'32"W	56.22'
L2	N44°03'32"W	55.30'
L3(T)	S23°38'32"E	103.30'
L4	N23°38'32"W	17.06'
L5	S43°48'28"W	21.66'
L6	N38°14'01"W	10.47'
L7	N10°17'03"W	8.18'
L8	N01°09'09"E	39.42'
L9	N02°34'11"W	21.66'
L10	N80°48'19"W	35.15'
L11(T)	S58°46'02"E	75.02'
L12(T)	N31°08'56"E	74.60'
L13	S31°08'56"W	11.95'
L14	S31°08'56"W	22.64'
L15	N25°08'54"E	94.32'
L16	N25°08'54"E	46.92'

CURVE TABLE

CURVE #	RADIUS	DELTA	LENGTH	CHORD BEARING	CHORD LENGTH
C1	50.00'	76°54'38"	68.66'	N14°18'25"W	63.55'
C2(T)	50.00'	181°56'58"	159.78'	S37°12'44"W	98.99'
C3	50.00'	54°57'53"	47.97'	S26°16'48"E	46.15'
C4	50.00'	36°50'25"	32.15'	S19°37'21"W	31.60'
C5	50.00'	90°08'36"	76.87'	S83°06'53"W	70.80'
C8	100.00'	28°59'31"	50.60'	S66°18'34"E	50.06'
C7(T)	73.00'	66°02'45"	86.70'	N65°10'19"E	81.69'
C9	73.00'	37°14'25"	47.45'	N80°34'29"E	46.62'
C10	73.00'	30°49'20"	39.25'	N46°33'06"E	38.78'
C11	37.50'	76°54'38"	51.65'	N14°18'25"W	47.66'
C12(T)	62.50'	76°54'38"	66.06'	N14°18'25"W	79.43'
C13	62.50'	54°56'17"	59.83'	S26°17'36"E	57.66'
C14	62.50'	36°52'01"	40.22'	S19°36'33"W	39.53'
C15	62.50'	90°08'36"	98.33'	S83°06'53"W	88.50'
C16	37.50'	181°56'58"	119.09'	S37°12'44"W	74.99'
C18	87.50'	24°17'27"	37.10'	S63°57'32"E	56.32'
C19	80.50'	66°02'45"	71.65'	N65°10'19"E	67.70'
C20	85.50'	25°14'59"	37.88'	N66°34'12"E	37.37'
C21(T)	25.50'	47°17'15"	21.05'	N62°24'40"W	20.45'
C22	25.50'	69°54'59"	40.02'	S13°48'33"E	36.04'
C23	62.50'	51°14'05"	55.89'	N28°08'42"W	54.04'
C24	62.50'	23°05'28"	25.19'	N13°36'10"E	25.02'
C25	62.50'	4°35'06"	5.00'	N00°14'07"W	5.00'
C26	62.50'	2°55'03"	3.18'	N62°16'13"W	3.18'
C27	112.50'	10°57'15"	21.51'	S57°17'26"E	21.48'

APPLICABLE CODES

- CONTRA COSTA COUNTY ZONING ORDINANCE
- CONTRA COSTA COUNTY SUBDIVISION MAP ACT
- CONTRA COSTA COUNTY PUBLIC UTILITIES ACT
- CONTRA COSTA COUNTY STORMWATER MANAGEMENT ORDINANCE
- CONTRA COSTA COUNTY SANITARY SEWER ORDINANCE
- CONTRA COSTA COUNTY SCENIC EASEMENT ORDINANCE
- CONTRA COSTA COUNTY PRIVATE ACCESS & UTILITY EASEMENT ORDINANCE
- CONTRA COSTA COUNTY PRIVATE STORM DRAIN EASEMENT ORDINANCE
- CONTRA COSTA COUNTY RELINQUISHMENT OF ABUTTER'S RIGHTS AND PRIVATE ACCESS PROHIBITED ORDINANCE
- CONTRA COSTA COUNTY FOUND STANDARD STREET MONUMENT PER (1)
- CONTRA COSTA COUNTY FOUND 1/2" REBAR WITH CAP STAMPED "L.S. 4210" PER (1)
- CONTRA COSTA COUNTY FOUND 1" IRON PIPE WITH NO TAG PER (1)
- CONTRA COSTA COUNTY SET 1/2" REBAR WITH CAP STAMPED "L.S. 4210"

APN: 189-150-014

SHEET 5 OF 6

APR 2022

ALIQUOT

CIVIL ENGINEERS
TRAFFIC ENGINEERS
LAND SURVEYORS

Aliquot Associates, Inc.
10000 Wilcox Road, Suite 200
Walnut Creek, CA 94598
Telephone: (925) 478-2300
Fax: (925) 478-2380

CONTRA COSTA COUNTY, CALIFORNIA
MARCH ~ 2022

SUBDIVISION 9590
"LAFAYETTE OAKS - PHASE 2"

ALL OF PARCEL A, AS SHOWN ON THAT CERTAIN SUBDIVISION MAP ENTITLED "LAFAYETTE OAKS - PHASE 1, SUBDIVISION NO. 9442" FILED FOR RECORD ON NOVEMBER 2, 2020, IN BOOK 544 OF MAPS, AT PAGE 11-18 OFFICIAL RECORDS OF CONTRA COSTA COUNTY