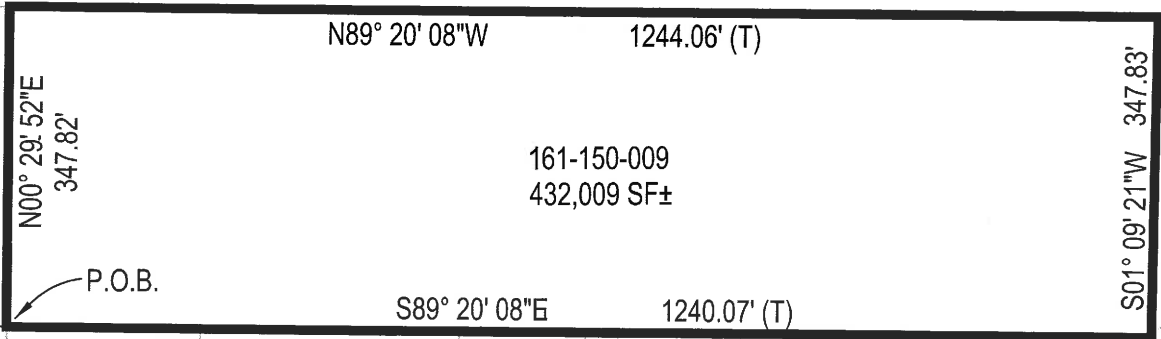




Yunjie Su



MIDHILL ROAD

N00° 29' 52" E
347.82'

P.O.B.

N89° 20' 08" W

1244.06' (T)

161-150-009
432,009 SF±

S89° 20' 08" E

1240.07' (T)

S01° 09' 21" W
347.83'

N 89° 30' 08" W
20.00'

N 00° 29' 52" E
262.20'

FINAL MAP OF SUBDIVISION 6959
MIDHILL RIDGE

RECORDED MARCH 29, 1989 IN
BOOK 332 OF MAPS AT PAGE 4
(332 M 4)

MIDWAY PLACE

MEDFORD CT

FORSYTHIA WAY

MIDHILL ROAD

N 00° 29' 52" E
251.06' (M-M)

P.O.C.

MIDWAY DRIVE

SUNHILL LANE

MIDWAY COURT



LEGEND & ABBREVIATIONS:

- M-M MONUMENT TO MONUMENT
- P.O.B. POINT OF BEGINNING
- P.O.C. POINT OF COMMENCEMENT
- SF SQUARE FEET
- (T) TOTAL
- STREET MONUMENT
- BOUNDARY LINE
- - - MONUMENT LINE

SCALE: 1"=200'



M MERIDIAN ASSOCIATES, INC.
CIVIL ENGINEERS • SURVEYORS
1300A WILLOW PASS COURT
CONCORD, CA 94520 925-691-7300

EXHIBIT "B"
PLAT TO ACCOMPANY LEGAL DESCRIPTION
POLICE SERVICE DISTRICT
UNINCORPORATED (MARTINEZ) - CONTRA COSTA COUNTY - CALIFORNIA