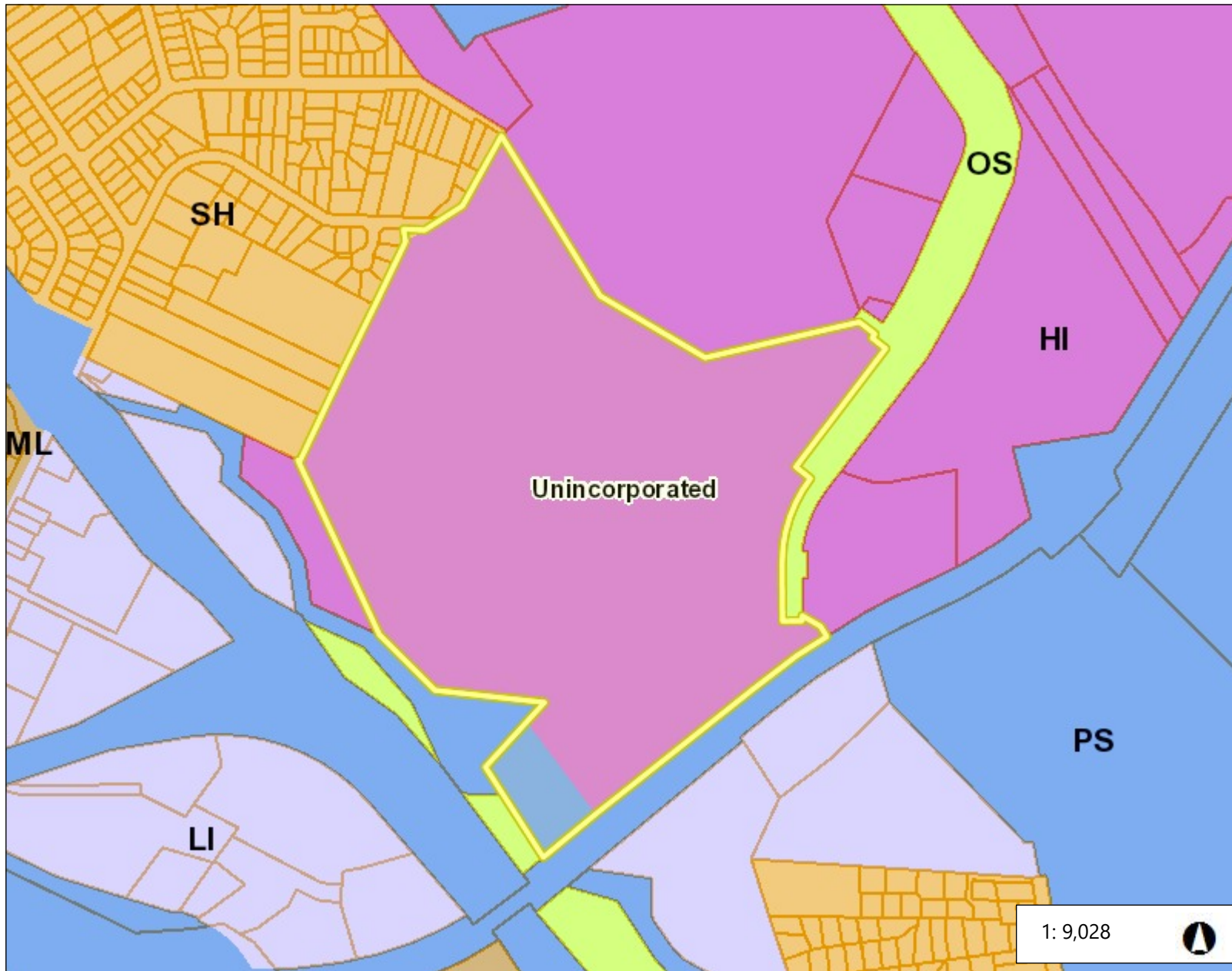


GENERAL PLAN: (HI) HEAVY INDUSTRIAL (APN 380-030-046)



Legend

- City Limits
- Unincorporated
- General Plan
 - SV (Single Family Residential - Ver
 - SL (Single Family Residential - Low
 - SM (Single Family Residential - Me
 - SH (Single Family Residential - Hig
 - ML (Multiple Family Residential - Lc
 - MM (Multiple Family Residential - Iv
 - MH (Multiple Family Residential - H
 - MV (Multiple Family Residential - V-
 - MS (Multiple Family Residential - V-
 - CC (Congregate Care/Senior Housi
 - MO (Mobile Home)
 - M-1 (Parker Avenue Mixed Use)
 - M-2 (Downtown/Waterfront Rodeo I
 - M-3 (Pleasant Hill BART Mixed Use
 - M-4 (Willow Pass Road Mixed Use)
 - M-5 (Willow Pass Road Commercia
 - M-6 (Bay Point Residential Mixed U
 - M-7 (Pittsburg/Bay Point BART Sta
 - M-8 (Dougherty Valley Village Cent
 - M-9 (Montalvin Manor Mixed Use)
 - M-10 (Willow Pass Business Park M
 - M-11 (Appian Way Mixed Use)
 - M-12 (Triangle Area Mixed Use)

1:9,028

0.3 0 0.14 0.3 Miles

WGS_1984_Web_Mercator_Auxiliary_Sphere

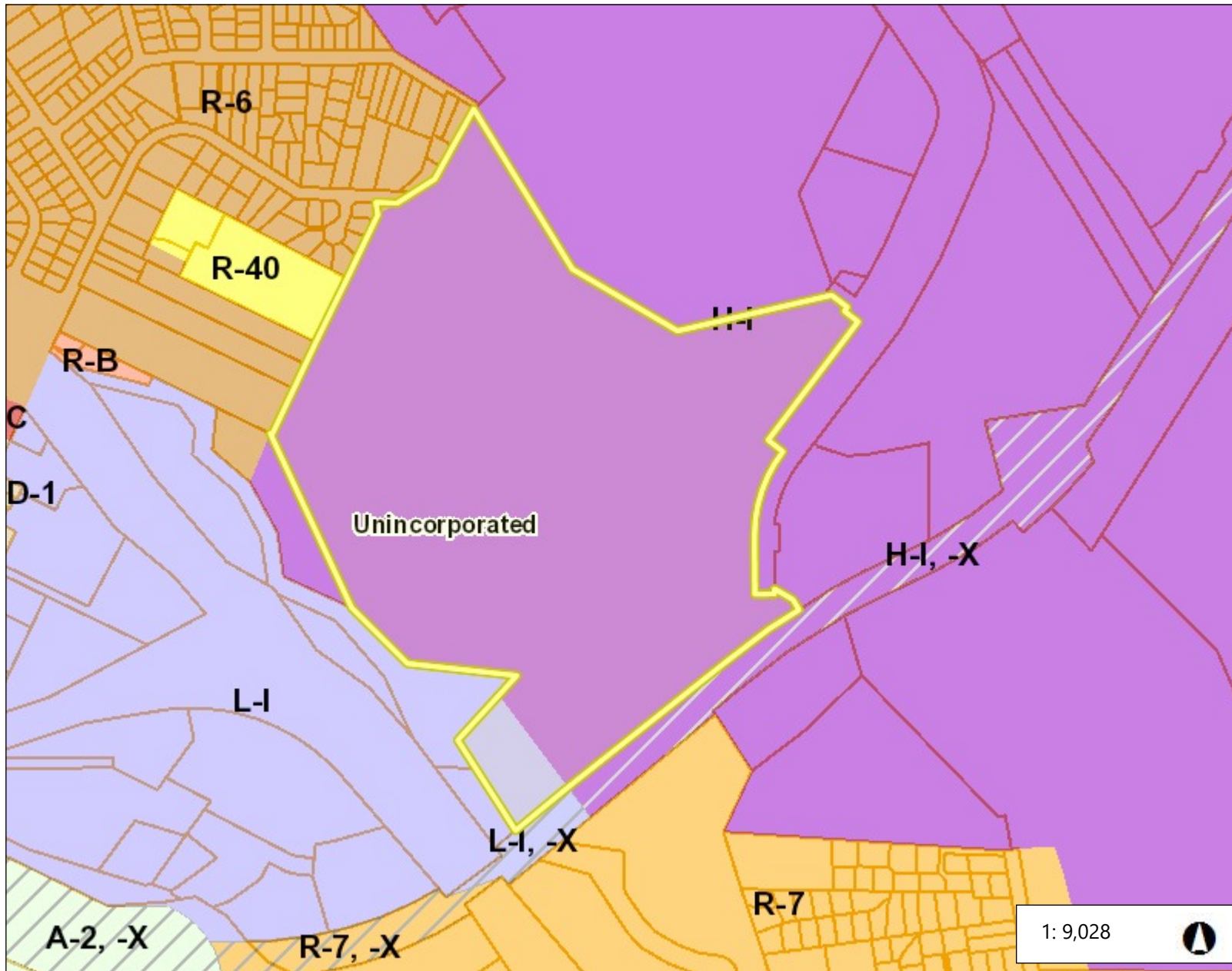
This map is a user generated static output from an Internet mapping site and is for reference only. Data layers that appear on this map may or may not be accurate, current, or otherwise reliable.

THIS MAP IS NOT TO BE USED FOR NAVIGATION

Notes

Contra Costa County -DOIT GIS

ZONING: (H-I) HEAVY INDUSTRIAL DISTRICT (APN 380-030-046)



Legend

- City Limits
- Unincorporated
- Zoning
- R-6 (Single Family Residential)
- R-6, -FH -UE (Flood Hazard and A
- R-6 -SD-1 (Slope Density Hillside I
- R-6 -TOV -K (Tree Obstruction anc
- R-6, -UE (Urban Farm Animal Excl
- R-6 -X (Railroad Corridor Combinir
- R-7 (Single Family Residential)
- R-7 -X (Railroad Corridor Combinir
- R-10 (Single Family Residential)
- R-10, -UE (Urban Farm Animal Exc
- R-12 (Single Family Residential)
- R-15 (Single Family Residential)
- R-20 (Single Family Residential)
- R-20, -UE (Urban Farm Animal Exc
- R-40 (Single Family Residential)
- R-40, -FH -UE (Flood Hazard and A
- R-40, -UE (Urban Farm Animal Exc
- R-65 (Single Family Residential)
- R-100 (Single Family Residential)
- D-1 (Two Family Residential)
- D-1 -T (Transitional Combining Dist
- D-1, -UE (Urban Farm Animal Excl
- M-12 (Multiple Family Residential)

1: 9,028



0.3 0 0.14 0.3 Miles

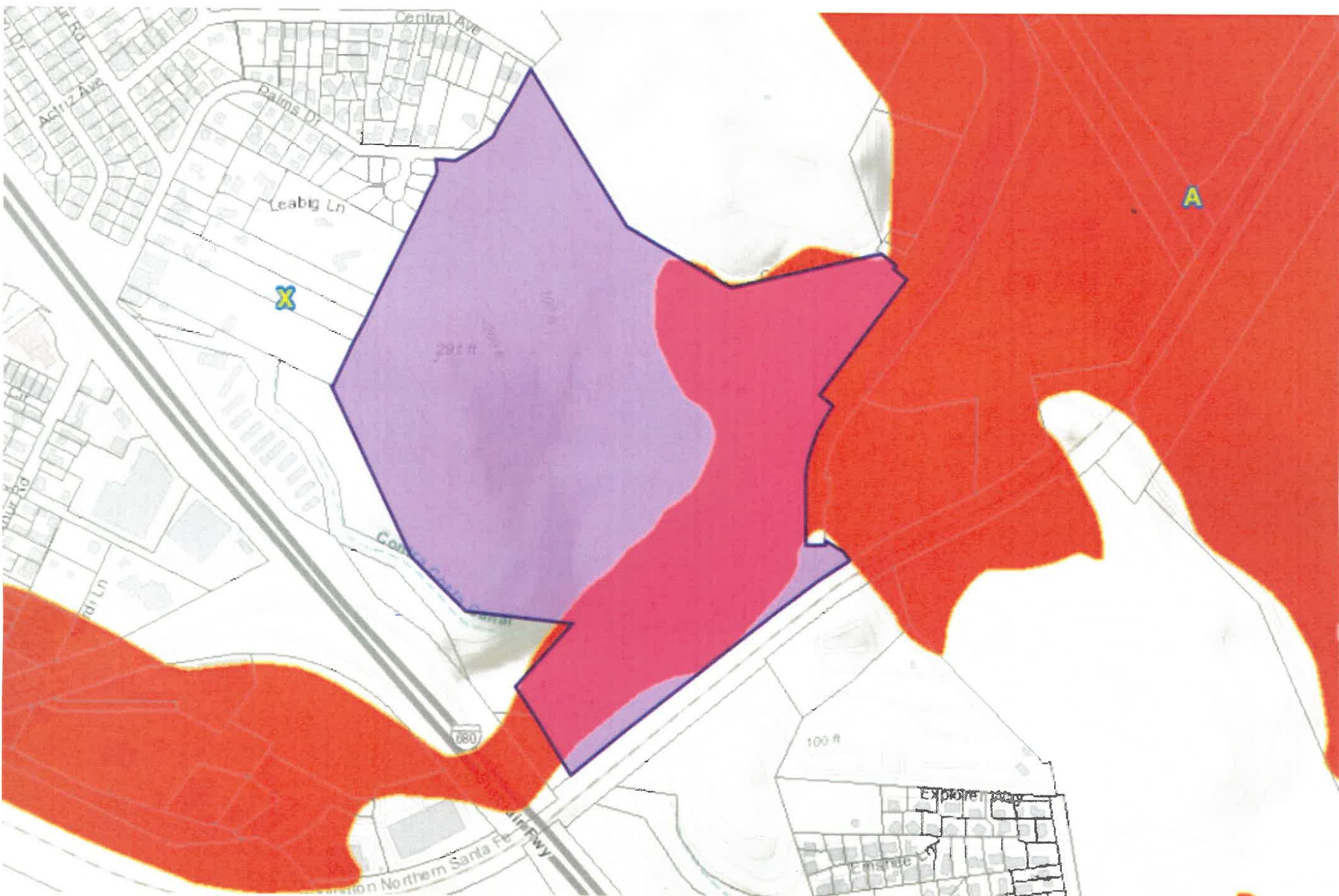
WGS_1984_Web_Mercator_Auxiliary_Sphere

This map is a user generated static output from an Internet mapping site and is for reference only. Data layers that appear on this map may or may not be accurate, current, or otherwise reliable.

THIS MAP IS NOT TO BE USED FOR NAVIGATION

Notes

Contra Costa County -DOIT GIS





FLOOD ZONE: A & X (APN 380-030-046)

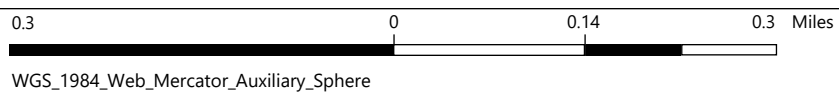
AERIAL PHOTO (APN 380-030-046)



Legend

-  City Limits
- Unincorporated
- World Imagery
- Low Resolution 15m Imagery
- High Resolution 60cm Imagery
- High Resolution 30cm Imagery
- Citations

1: 9,028 



This map is a user generated static output from an Internet mapping site and is for reference only. Data layers that appear on this map may or may not be accurate, current, or otherwise reliable.
THIS MAP IS NOT TO BE USED FOR NAVIGATION

Notes

Contra Costa County -DOIT GIS