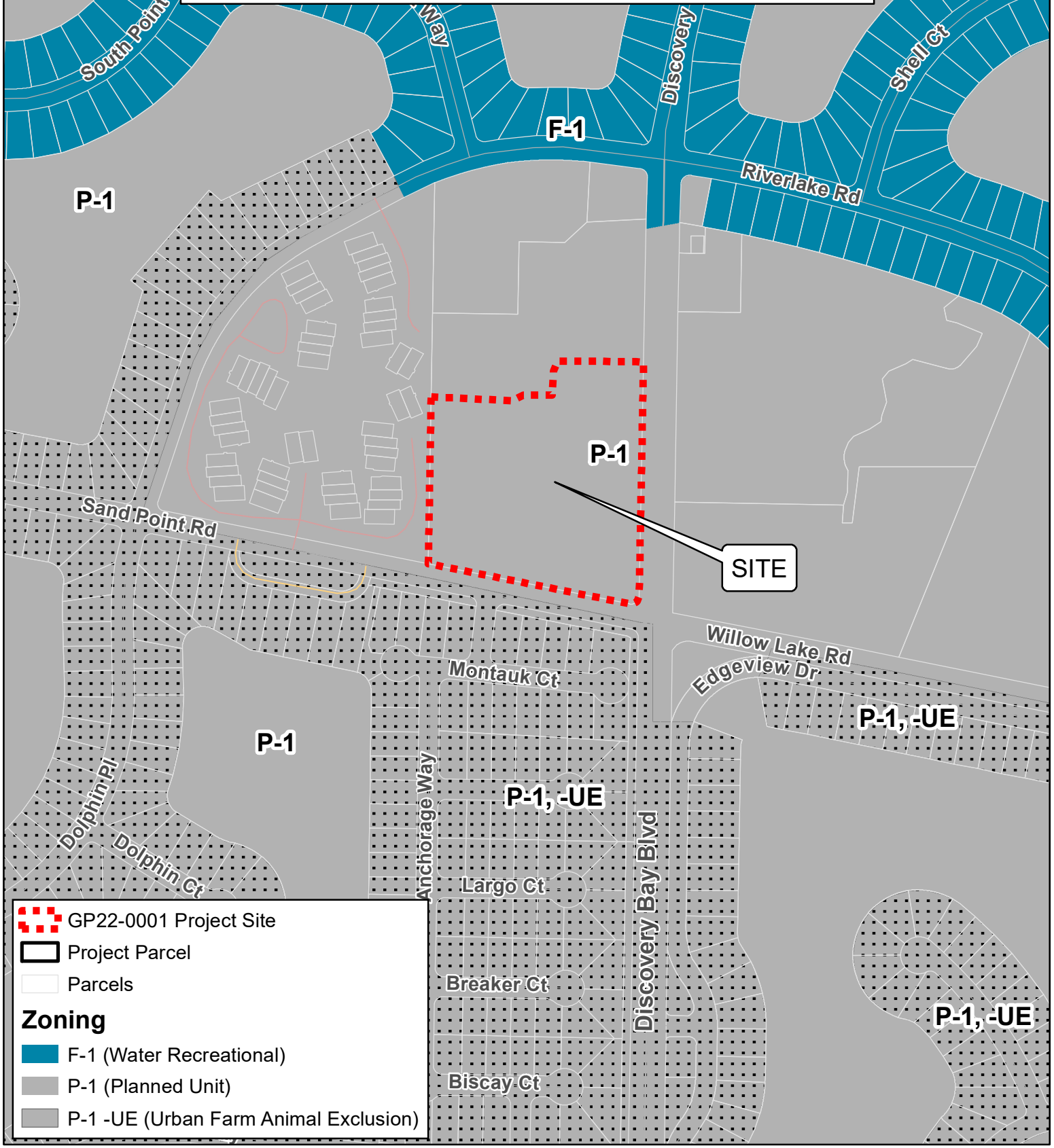


Attachment C: APN: 004-182-006 General Plan Amendment Study (GP22-0001) Zoning Map



GP22-0001 Project Site

Project Parcel

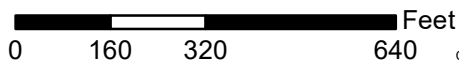
Parcels

Zoning

F-1 (Water Recreational)

P-1 (Planned Unit)

P-1 -UE (Urban Farm Animal Exclusion)



Map Created 3/31/2022
by Contra Costa County Department of
Conservation and Development, GIS Group
30 Muir Road, Martinez, CA 94553
37:59:41.791N 122:07:03.756W

This map was created by the Contra Costa County Department of Conservation and Development with data from the Contra Costa County GIS Program. Some base data, primarily City Limits, is derived from the CA State Board of Equalization's tax rate areas. While obligated to use this data the County assumes no responsibility for its accuracy. This map contains copyrighted information and may not be altered. It may be reproduced in its current state if the source is cited. Users of this map agree to read and accept the County of Contra Costa disclaimer of liability for geographic information.

