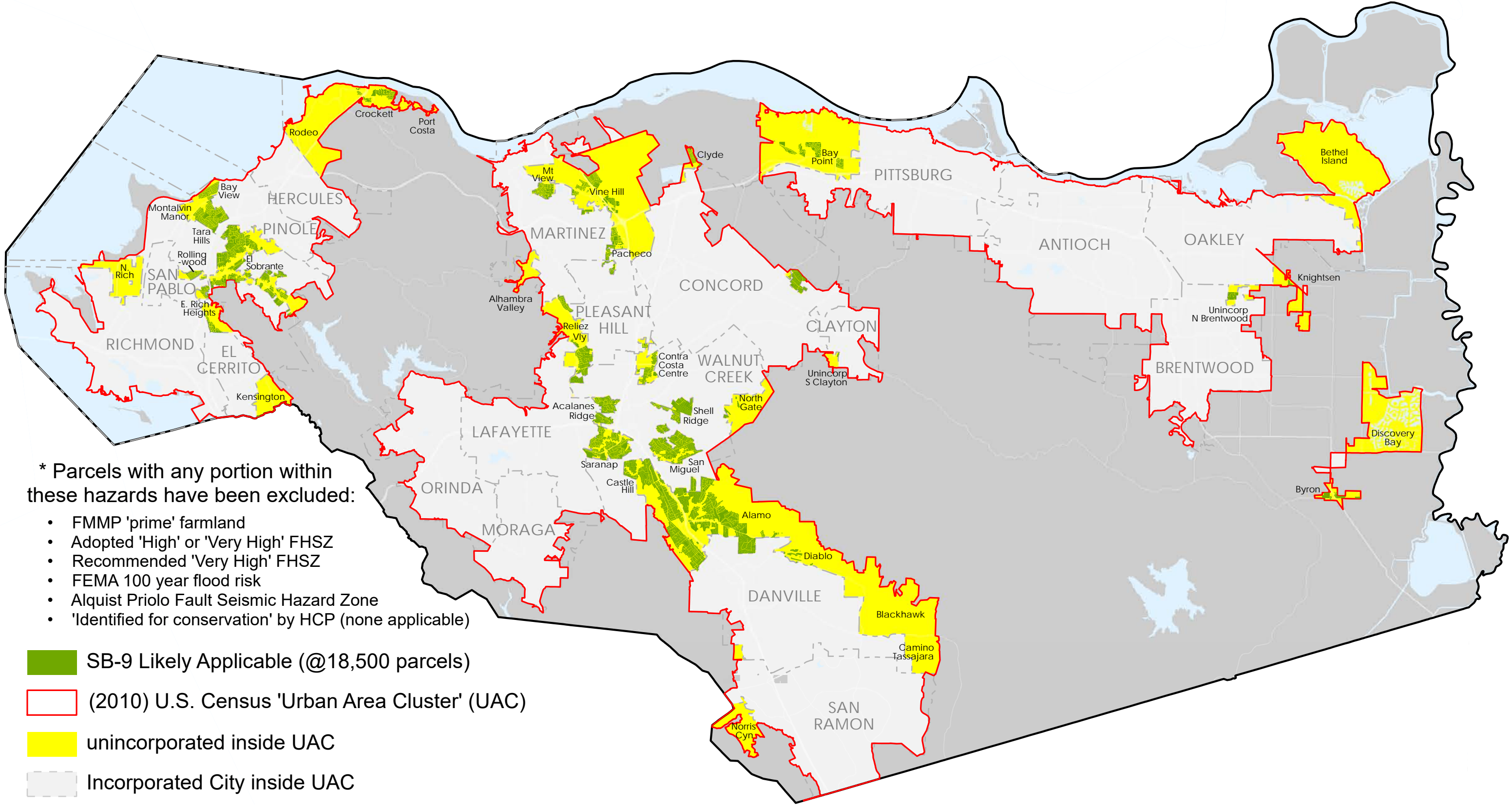


ATTACHMENT A

SB-9 BASE MAP SB-9 QUALIFYING PARCELS

SB-9 likely applicable 'Urban' parcels with Single Family Zoning outside designated Hazard Areas*

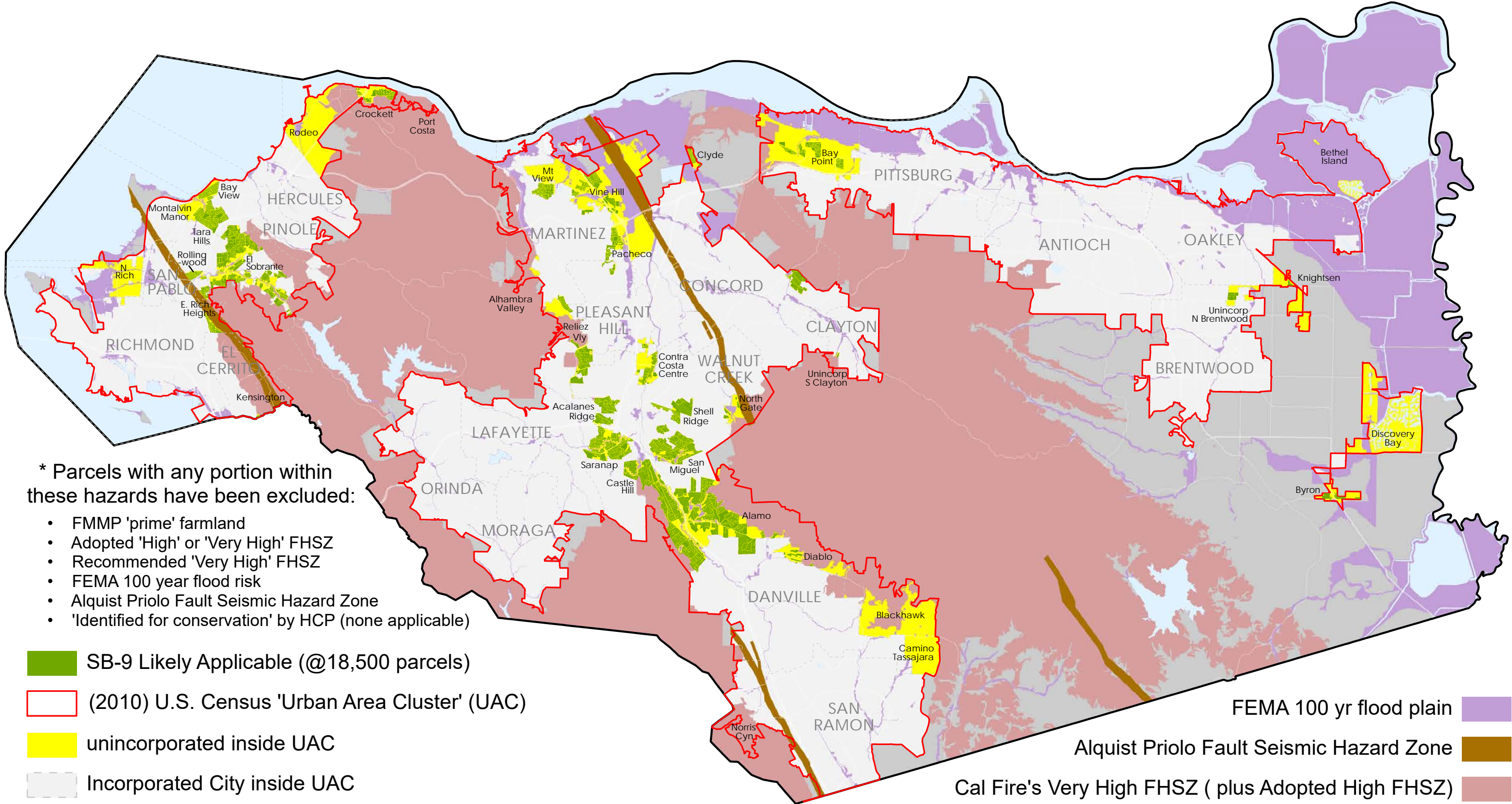


The Census Bureau will likely release new Urban Clusters in 2022.

Cal Fire will likely release new FHSZ in December 2021

CGS may revise AP Fault Zones as they complete full Seismic Hazard mapping for CCC over the next several years

SB-9 likely applicable 'Urban' parcels with Single Family Zoning outside designated Hazard Areas*



- * Parcels with any portion within these hazards have been excluded:
- FMMP 'prime' farmland
 - Adopted 'High' or 'Very High' FHSZ
 - Recommended 'Very High' FHSZ
 - FEMA 100 year flood risk
 - Alquist Priolo Fault Seismic Hazard Zone
 - 'Identified for conservation' by HCP (none applicable)

- SB-9 Likely Applicable (@18,500 parcels)
- (2010) U.S. Census 'Urban Area Cluster' (UAC)
- unincorporated inside UAC
- Incorporated City inside UAC
- outside UAC

- FEMA 100 yr flood plain
- Alquist Priolo Fault Seismic Hazard Zone
- Cal Fire's Very High FHSZ (plus Adopted High FHSZ)

The Census Bureau will likely release new Urban Clusters in 2022.

Cal Fire will likely release new FHSZ in December 2021

CGS may revise AP Fault Zones as they complete full Seismic Hazard mapping for CCC over the next several years