

CONTRA COSTA COUNTY INTERDEPARTMENTAL CLIMATE ACTION TASK FORCE

PROGRESS UPDATE

March 22, 2022

John Kopchik, Director, Department of Conservation and Development

Steve Kowalewski, Chief Deputy Director, Department of Public Works

Sustainability Fund

- Board approved in October 2021
- In November 2021, Board agreed to allocate \$2.5 million/year from Measure X to investments in County facilities
- First priority project is electric vehicle chargers to expedite conversion of County fleet vehicles to electric
- Second priority project is energy use reduction (LED with motion sensors)
- Primary focus on Distributed Energy Resource Plan - Solar PV, Energy Efficiency, Electric Vehicles, Energy Storage, Automated Demand Response



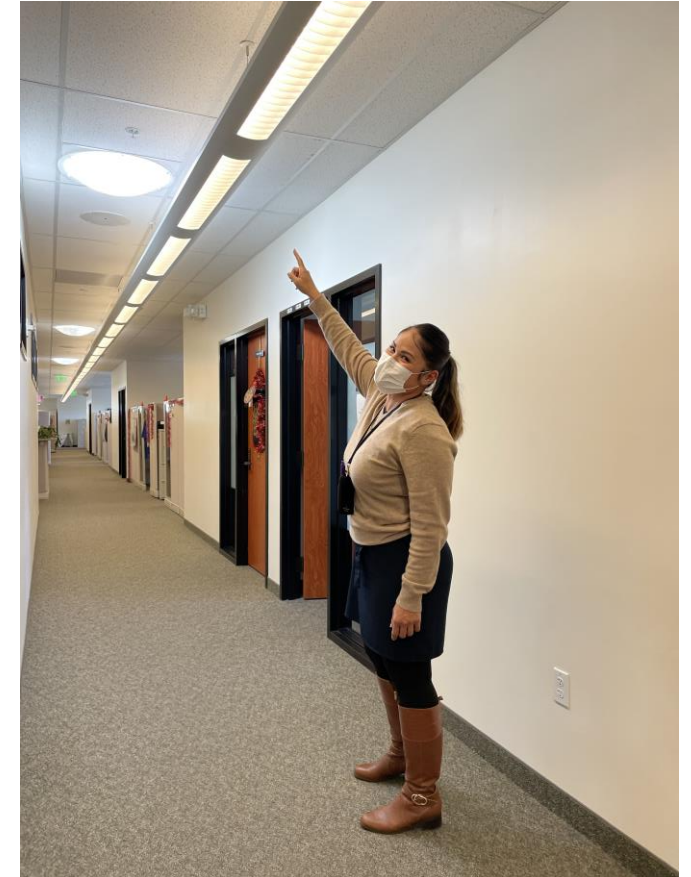
G3 Champions



- Each department will appoint a champion(s) to help the department adopt best practices from the County's Green Business Program.
 - Champions are volunteers
 - Expected time commitment: 2-3 hours/month
 - May need a champion at each site, if your department has multiple sites
- [Intranet Site](#)
- G3 Champion Guide and other resources
- Regular meetings of all Champions to be led by Steering Committee (Public Works DCD, Health, Library, CAO, HR)

G3 Champions

- Champion recruitment will begin over coming weeks
- We will provide department heads with resources to find the right people
- Launch around Earth Day (April 22)
- [See G3 Champion Intranet Site](https://www.insidecontracosta.org/334/Contra-Costa-Sustainability) for County employees (<https://www.insidecontracosta.org/334/Contra-Costa-Sustainability>)



Tracking Our Progress

Green Business Program has developed a custom dashboard for Contra Costa County!

The screenshot shows a web dashboard for the Green Business Program. At the top is a navigation bar with links: 'My Checklist', 'My Status', 'My Company Profile', 'My Report Card', and 'Communication'. Below this is a sidebar with a 'GET STARTED' button and a list of categories: ENERGY, Awareness & Maintenance, Lighting & Equipment, POLLUTION PREVENTION, SOLID WASTE, TRANSPORTATION, WASTEWATER, WATER, and COMMUNITY. The main content area is titled 'MEETING THE REQUIREMENTS Tier 2' and shows a progress bar for 'Lighting & Equipment' with the text '10 Tier 2 measures completed. A minimum of 19 Tier 2 measures are required.' Below this is a 'CORE MEASURES' section with a table of measures. The first measure is '1. Use energy-efficient lighting. Replace all halogen, incandescent, T-12, high-pressure sodium, and metal halide lighting with LEDs. T-8s should be replaced with T-8 LEDs/integrated LEDs as they burn out. Below, select the lights you have or what you've recently replaced.' It has a 'YES' toggle (checked), a 'HELP' button, and a 'N/A' toggle. The second measure is '2. Lighting Energy Savings [Which fixtures did you retrofit?]' with a 'YES' toggle (checked). To the right of the measures is a 'CATEGORY PROGRESS' section with a progress bar and the text 'You have completed all measures.' Below this is an information box titled 'Efficient Lighting Options' with a green icon and text: 'When compared to incandescent bulbs, CFL and LED bulbs will not on last 8-10 times longer, but also save businesses thousands of dollars each year in daily lighting costs.'

My Checklist My Status My Company Profile My Report Card Communication

GET STARTED

ENERGY

Awareness & Maintenance

Lighting & Equipment

POLLUTION PREVENTION

SOLID WASTE

TRANSPORTATION

WASTEWATER

WATER

COMMUNITY

PRINT TIER 2

PROGRESS

2 REQUIRED MEASURES

19 measures completed

Tier is available in view mode only.

MEETING THE REQUIREMENTS

Tier 2

10 Tier 2 measures completed. A minimum of 19 Tier 2 measures are required.

Lighting & Equipment

SAVE **NEXT**

Last saved 4 days ago

CORE MEASURES **YES NO N/A**

CATEGORY PROGRESS

You have completed all measures.

1. Use energy-efficient lighting. Replace all halogen, incandescent, T-12, high-pressure sodium, and metal halide lighting with LEDs. T-8s should be replaced with T-8 LEDs/integrated LEDs as they burn out. Below, select the lights you have or what you've recently replaced.

HELP

> Lighting Energy Savings [Which fixtures did you retrofit?]

Efficient Lighting Options

When compared to incandescent bulbs, CFL and LED bulbs will not on last 8-10 times longer, but also save businesses thousands of dollars each year in daily lighting costs.



THANK YOU!
