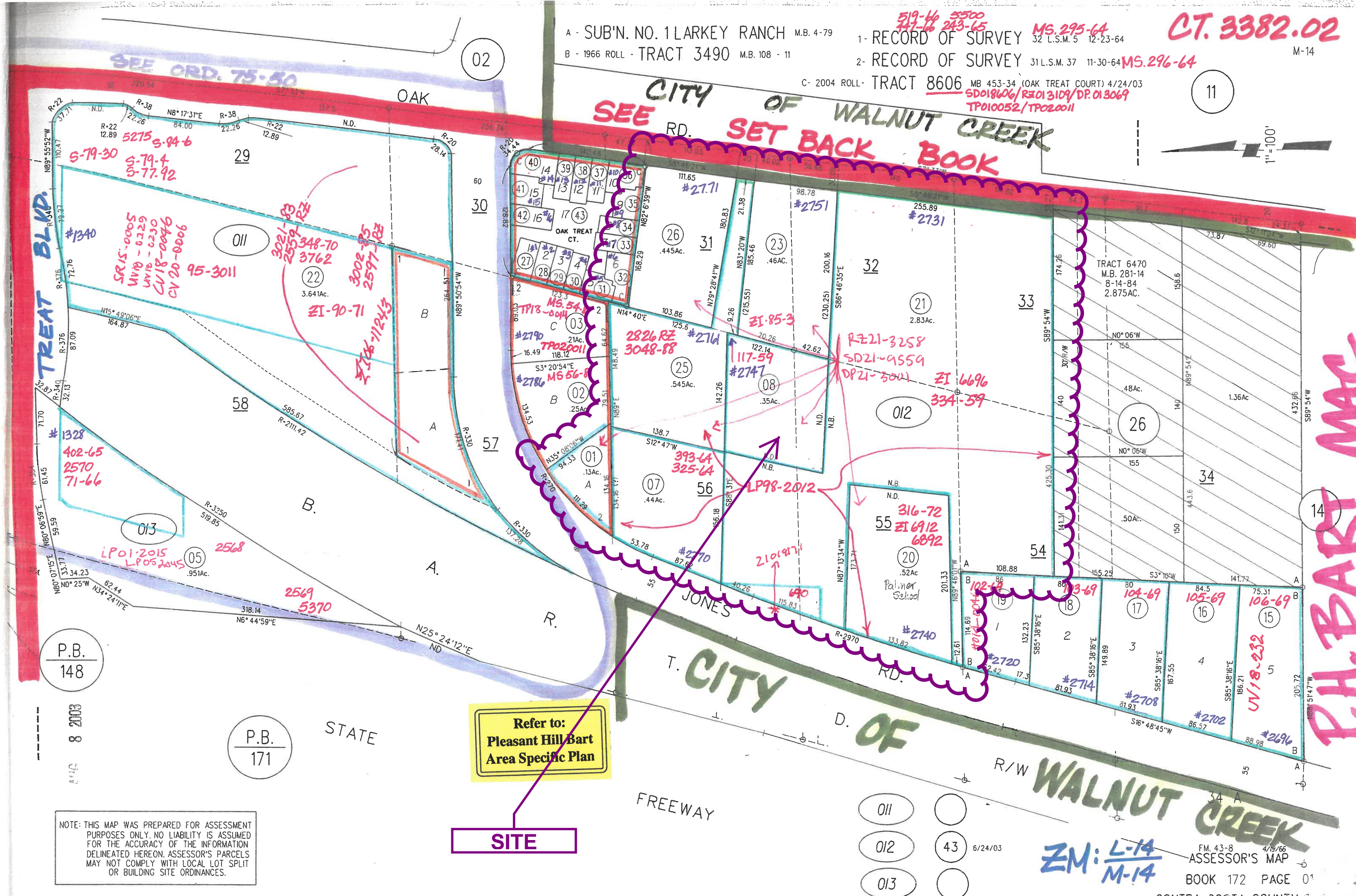


A - SUB'N. NO. 1 LARKEY RANCH M.B. 4-79
B - 1966 ROLL - TRACT 3490 M.B. 108 - 11

519-46 5500
447-16 243-65
1- RECORD OF SURVEY 32 L.S.M. 5 12-23-64 MS.295-64
2- RECORD OF SURVEY 31 L.S.M. 37 11-30-64 MS.296-64
C- 2004 ROLL - TRACT 8606 MB 453-34 (OAK TREAT COURT) 4/24/03
SD018606/R3013109/DP.013069
TP010052/TP020011

CT. 3382.02
M-14

CITY OF WALNUT CREEK
SEE RD. SET BACK BOOK



NOTE: THIS MAP WAS PREPARED FOR ASSESSMENT PURPOSES ONLY. NO LIABILITY IS ASSUMED FOR THE ACCURACY OF THE INFORMATION DELINEATED HEREON. ASSESSOR'S PARCELS MAY NOT COMPLY WITH LOCAL LOT SPLIT OR BUILDING SITE ORDINANCES.

Refer to:
Pleasant Hill/Bart
Area Specific Plan

SITE

ZM: L-14
M-14

FM. 43-8 4/19/66
ASSESSOR'S MAP
BOOK 172 PAGE 01
CONTRA COSTA COUNTY

Geary Rd

Treat Blvd

Treat Blvd

County Files:

SD21-9559,

DP21-3001,

RZ21-3258

General Plan Map

M-3

Oak Rd

PS

Jones Rd



WALNUT
CREEK


MH

Parnell Ct

Oak Rd

Jones Rd

General Plan Land Use Designation

 MH (Multiple Family Residential - High) 21.0 - 29.9 Units per Net Acre

 M-3 (Pleasant Hill BART Mixed Use)

 PS (Public/Semi-Public)

 Site

 City Limits



Map Created 1/18/2022
by Contra Costa County Department of
Conservation and Development, GIS Group
30 Muir Road, Martinez, CA 94553
37:59:41.791N 122:07:03.756W

This map was created by the Contra Costa County Department of Conservation and Development with data from the Contra Costa County GIS Program. Some base data, primarily City Limits, is derived from the CA State Board of Equalization's tax rate areas. While obligated to use this data the County assumes no responsibility for its accuracy. This map contains copyrighted information and may not be altered. It may be reproduced in its current state if the source is cited. Users of this map agree to read and accept the County of Contra Costa disclaimer of liability for geographic information.



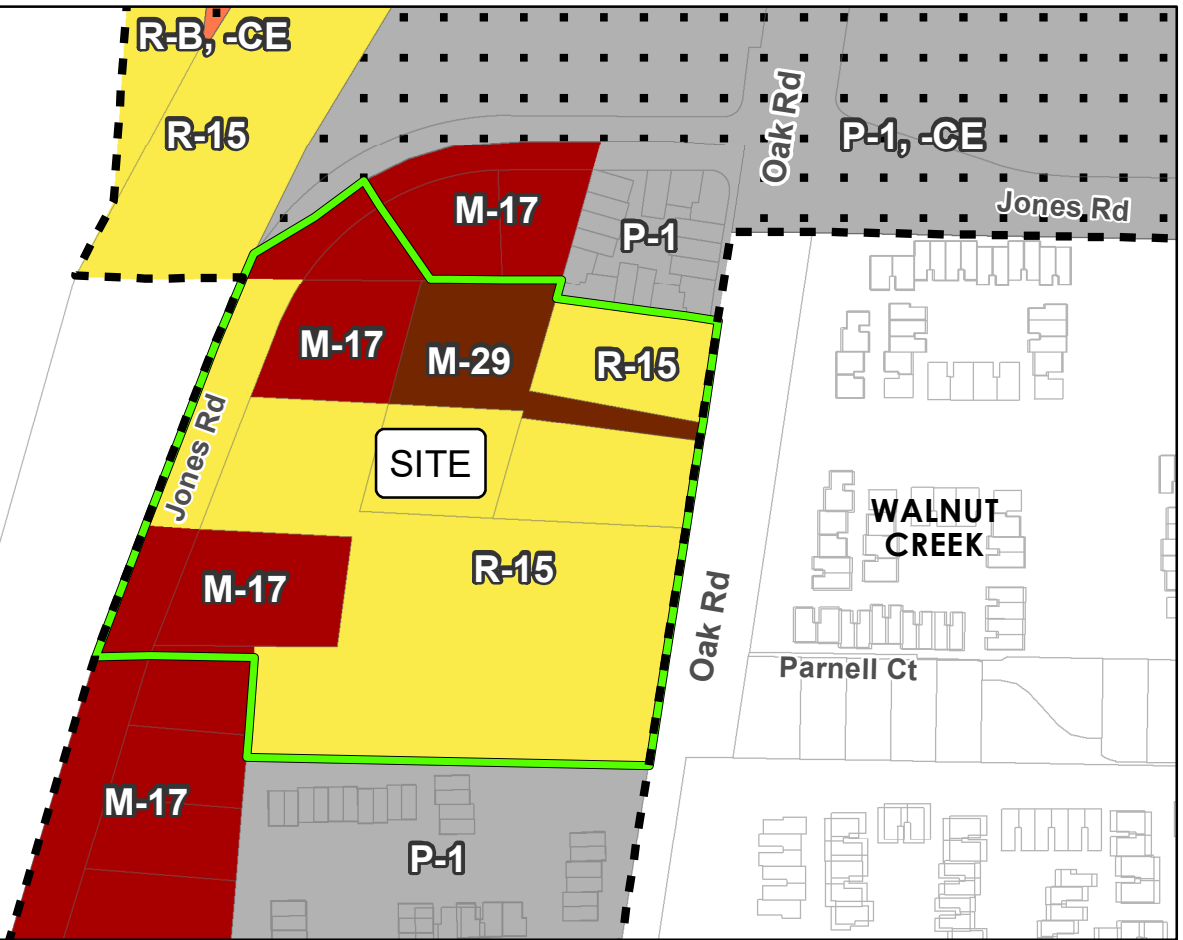
County Files: SD21-9559, DP21-3001, RZ21-3258 Zoning Map



WALNUT
CREEK



Current Zoning



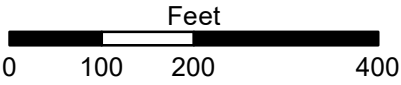
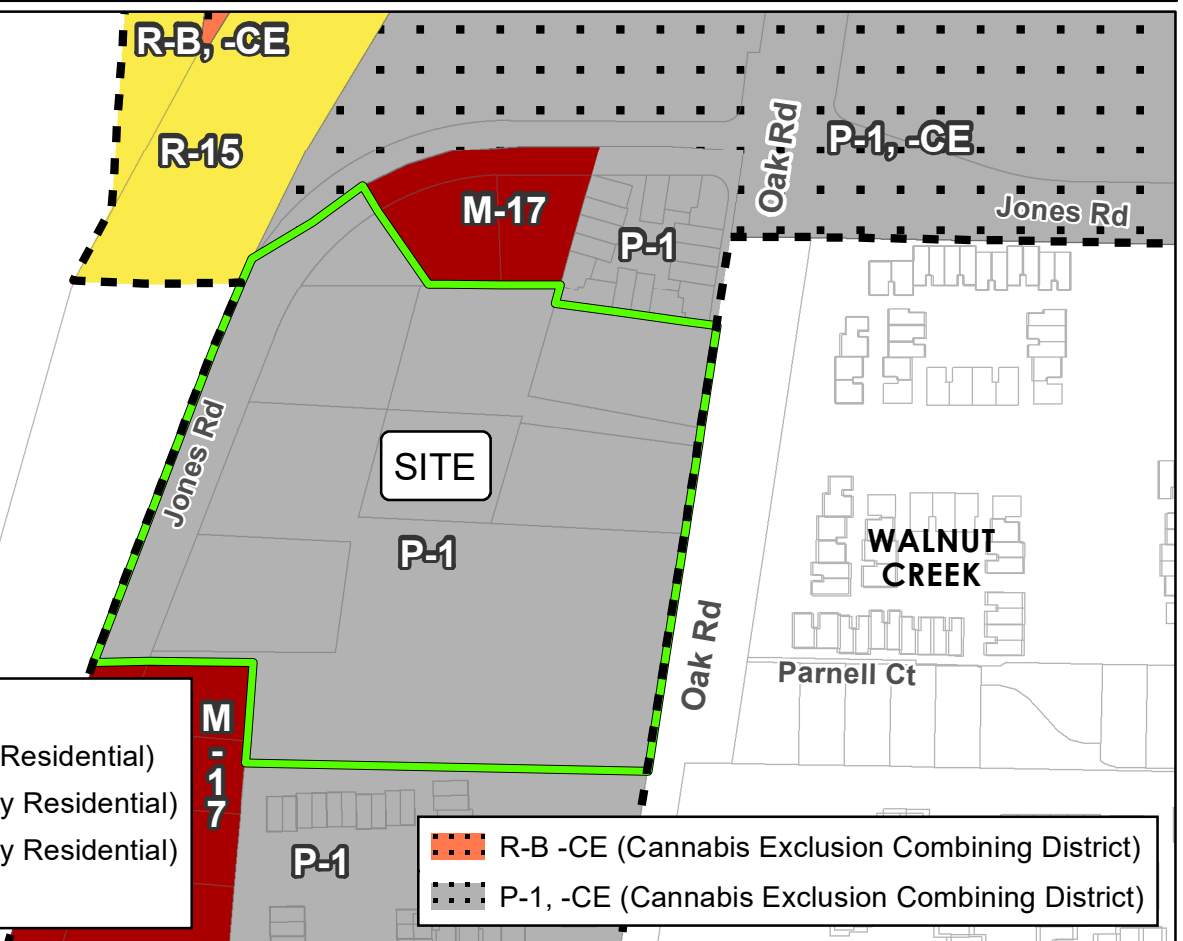
Proposed Zoning



WALNUT
CREEK

- Zoning**
- R-15 (Single Family Residential)
 - M-17 (Multiple Family Residential)
 - M-29 (Multiple Family Residential)
 - P-1 (Planned Unit)

- R-B -CE (Cannabis Exclusion Combining District)
- P-1, -CE (Cannabis Exclusion Combining District)

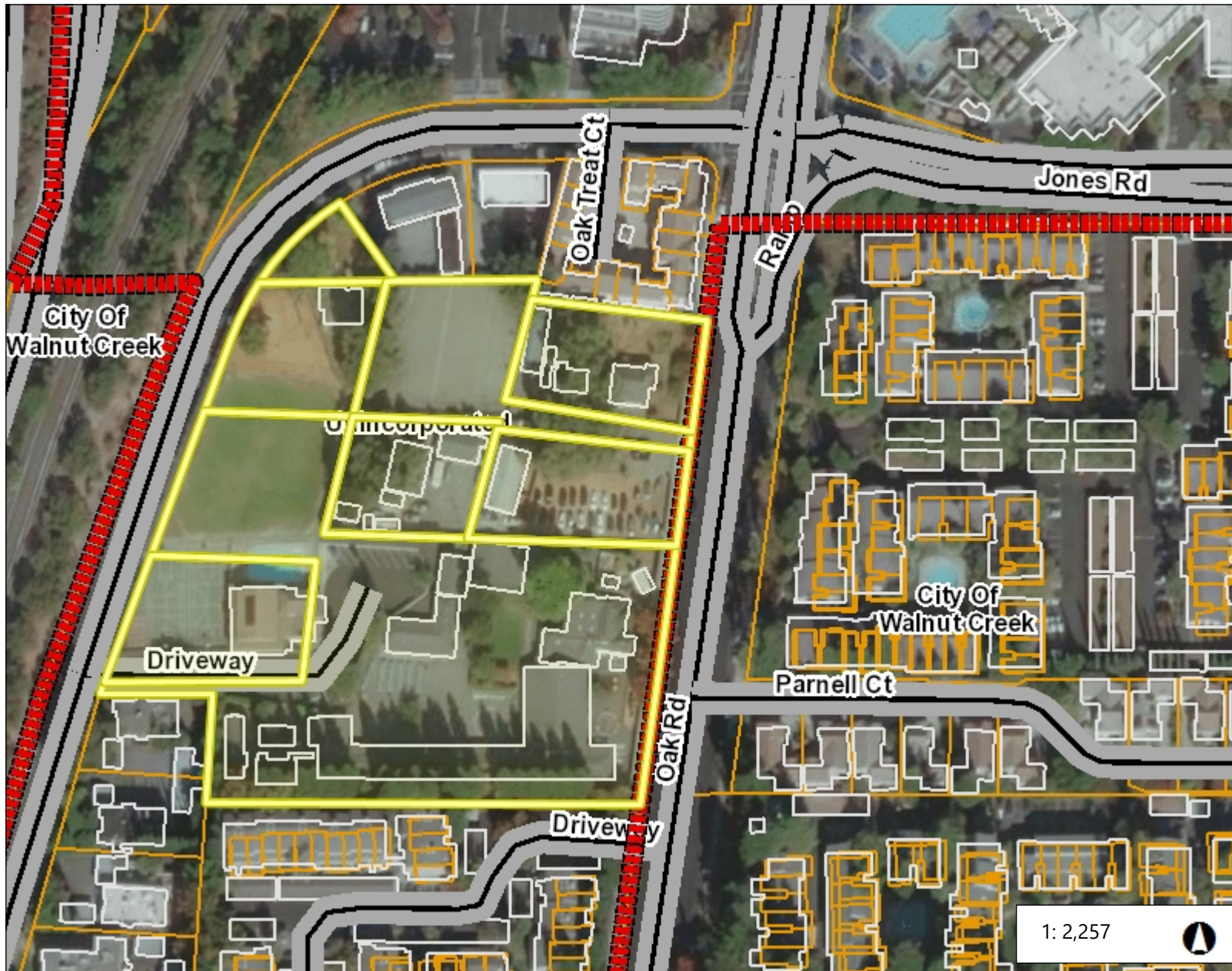


Map Created 01/18/2022
by Contra Costa County Department of
Conservation and Development, GIS Group
30 Muir Road, Martinez, CA 94553
37:59:41.791N 122:07:03.756W

This map was created by the Contra Costa County Department of Conservation and Development with data from the Contra Costa County GIS Program. Some base data, primarily City Limits, is derived from the CA State Board of Equalization's tax rate areas. While obligated to use this data the County assumes no responsibility for its accuracy. This map contains copyrighted information and may not be altered. It may be reproduced in its current state if the source is cited. Users of this map agree to read and accept the County of Contra Costa disclaimer of liability for geographic information.



Aerial Photograph



Legend

- City Limits
- Unincorporated
- Streets
- Building Outlines
- Assessment Parcels
- World Imagery
- Low Resolution 15m Imagery
- High Resolution 60cm Imagery
- High Resolution 30cm Imagery
- Citations

Notes

Contra Costa County -DOIT GIS

0.1 0 0.04 0.1 Miles

WGS_1984_Web_Mercator_Auxiliary_Sphere

This map is a user generated static output from an Internet mapping site and is for reference only. Data layers that appear on this map may or may not be accurate, current, or otherwise reliable.

THIS MAP IS NOT TO BE USED FOR NAVIGATION