

East Contra Costa Subbasin Groundwater Sustainability Plan Update August 9, 2021



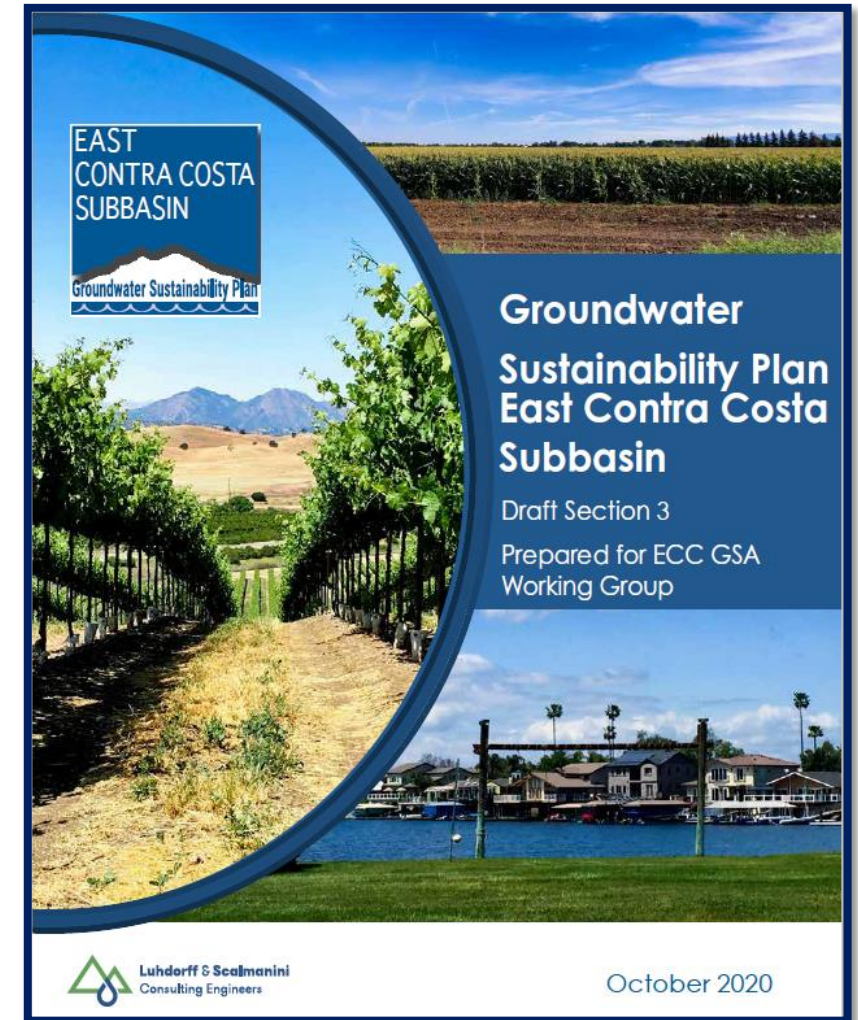
Contra Costa County
Transportation, Water,
Infrastructure Committee

ECC Groundwater Sustainability Plan

Plan Sections

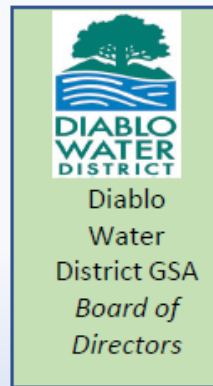
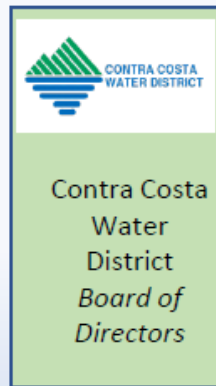
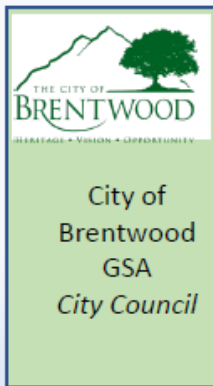
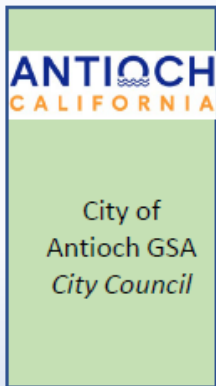
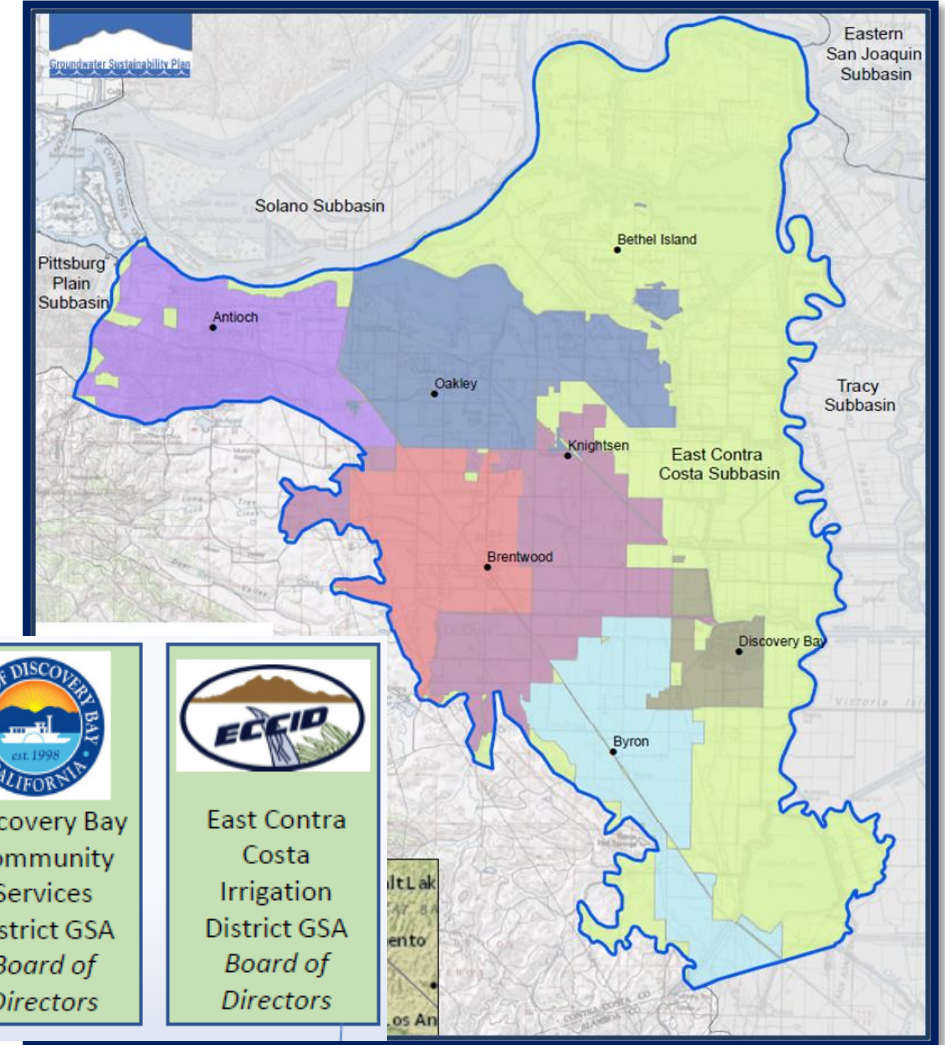
1. Introduction and Agencies
2. Plan Area
3. Basin Setting
4. Water Supply
5. Water Budget – Past, Current and Future
6. Monitoring Networks
- ✓ 7. Sustainable Management Criteria
- ✓ 8. Projects and Management Actions
- ✓ 9. Implementation
10. Communication

<https://www.eccc-irwm.org/sgma-documents-reports>

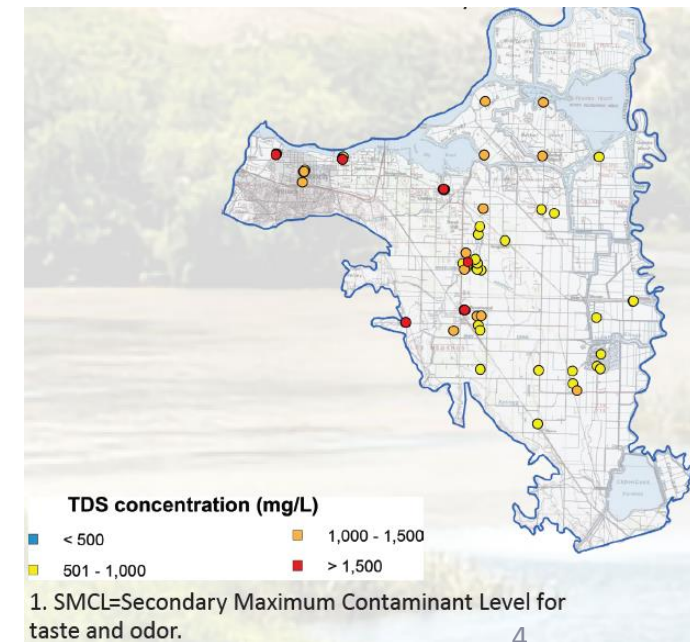


Participating Agencies

Seven GSAs and Contra Costa Water District

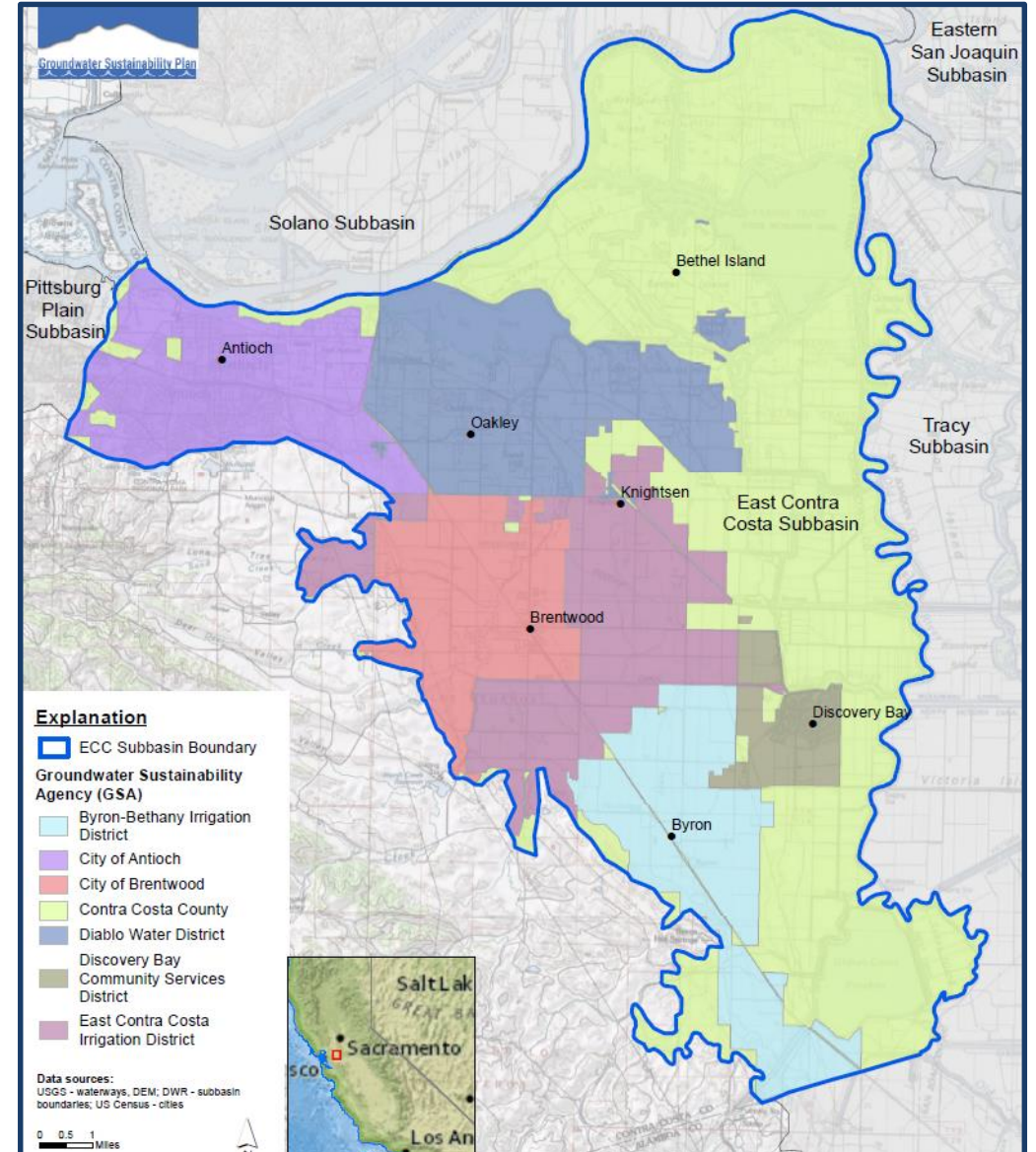


1. Chronic Groundwater Level Lowering: Not present
2. Groundwater Storage: No reduction
3. Seawater Intrusion: Not present
4. Groundwater Quality: No degradation due to pumping
5. Land Subsidence due to pumping: Not present
6. Surface Water Depletion due to pumping: Not present

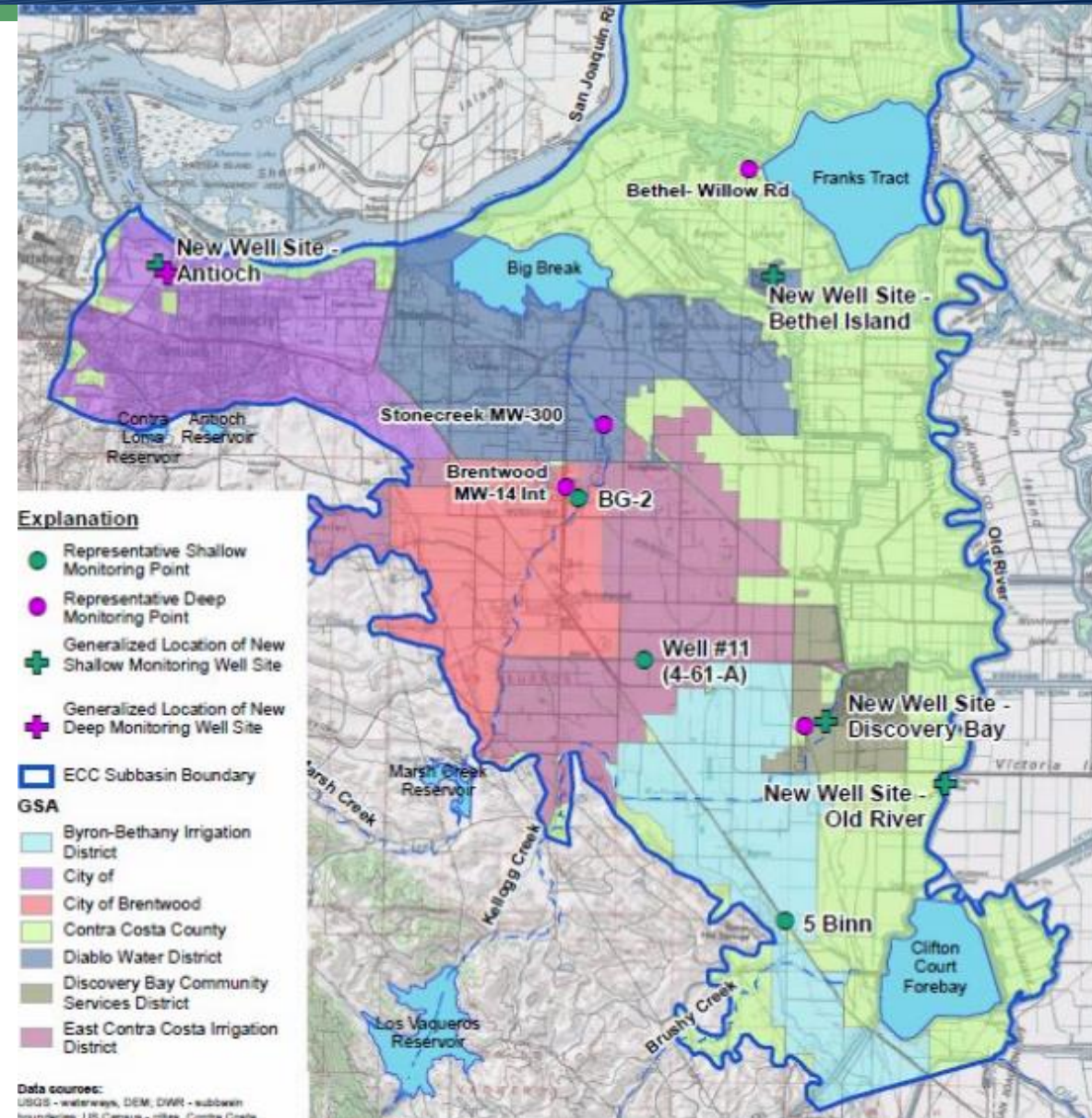


ECC Sustainability Goal:

- Protect and maintain safe and reliable groundwater in the face of climate change*



Proposed Representative Monitoring Network



East Contra Costa GSP Sections 7, 8 and 9

✓ **Posted for Public Review and Comment**

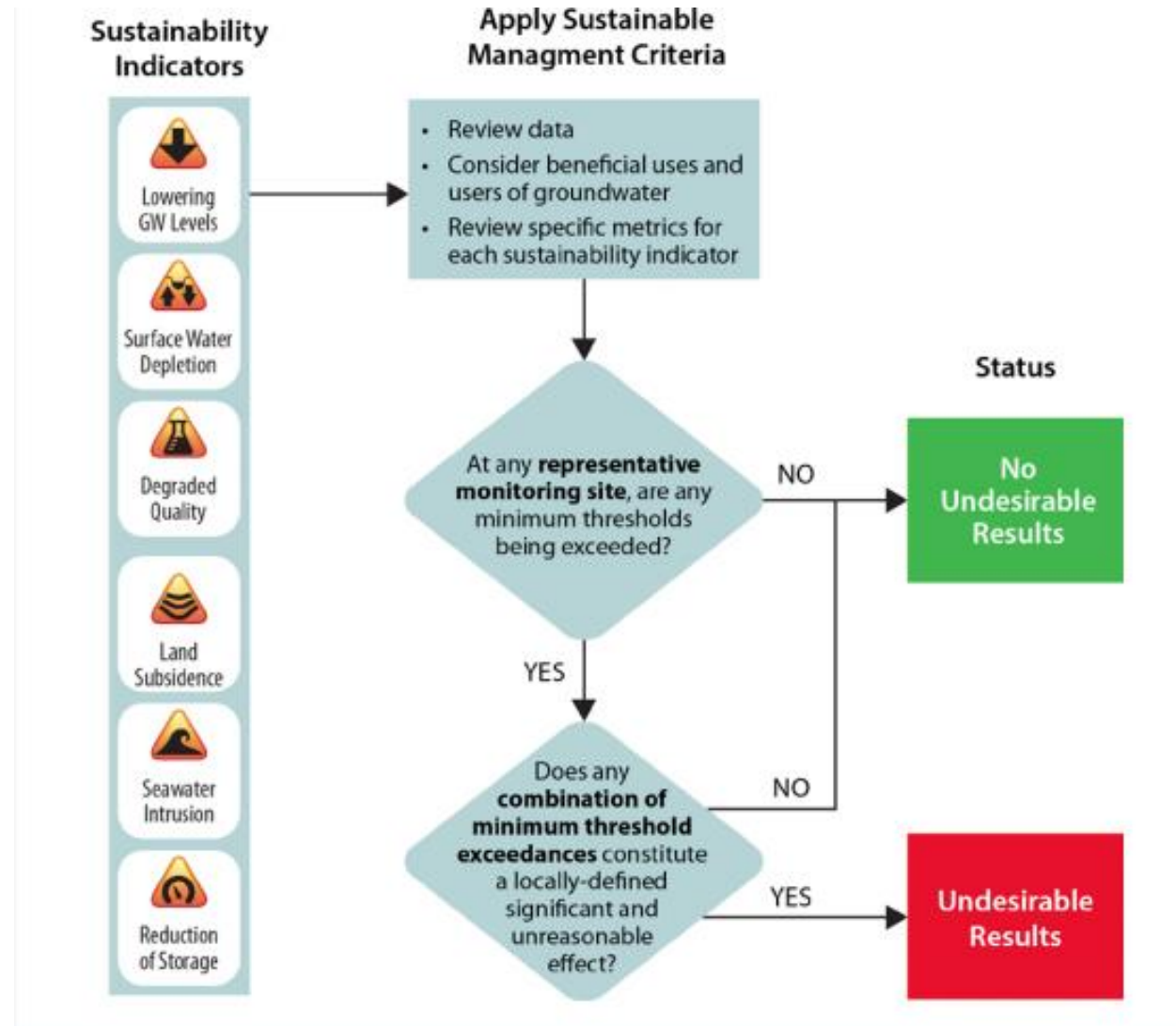
<https://www.eccc-irwm.org/sgma-documents-reports>

Section 7: Sustainable Management Criteria

Four requirements

1. Establish a Sustainability Goal
2. Identify Undesirable Results
3. Determine Minimum Thresholds (MT)
4. Determine Measurable Objectives (MO)

Relationship between Sustainable Management Criteria, Minimum Thresholds and Undesirable Results



Process for Sustainable Management Criteria

- Identify groundwater uses and users.
- Define undesirable results that have the potential to harm users and beneficial uses.
- Set Measurable Thresholds and Measurable Objectives.

ECC Subbasin Sustainability Goal

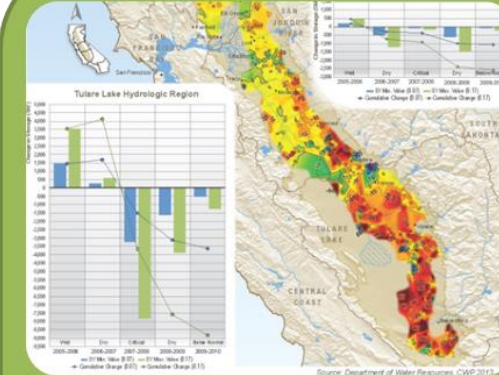
- Protect and maintain safe and reliable sources of groundwater for all beneficial uses and users.
- Ensure current and future groundwater demands are met under climate change.
- Establish and protect sustainable yield for the Subbasin.
- Avoid undesirable results defined under SGMA.

Sustainable Management Criteria, cont.

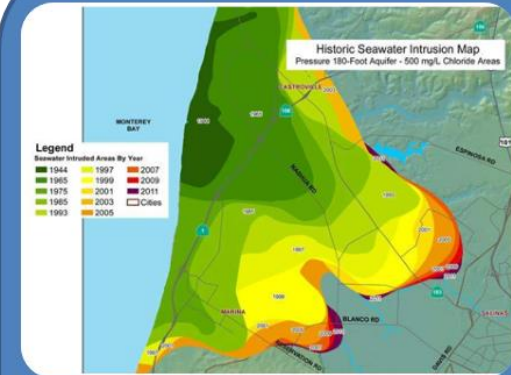
Avoid
undesirable results
for SGMA
sustainability
indicators:



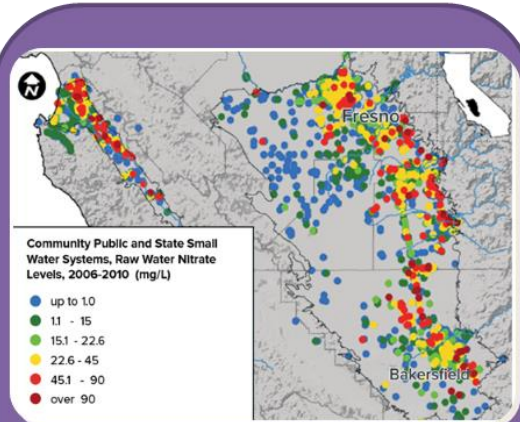
Lowering of GW
Levels



Reduction of GW
Storage



Seawater Intrusion



Degraded
Water Quality



Land Subsidence



Depletion of Inter-
connected Streams

Sustainable Management Criteria, cont.

Principles in the ECC Subbasin GSP include:

- Outreach to interested parties, stakeholders and the public
- Prioritize environmental justice and groundwater dependent ecosystems
- Protect supply for potentially underrepresented communities
- Protect sufficient groundwater storage for operational flexibility in all water year types

Current groundwater uses and users

- Domestic
 - Municipal
 - Small water system
 - Private domestic
- Agricultural
- Commercial
- Industrial

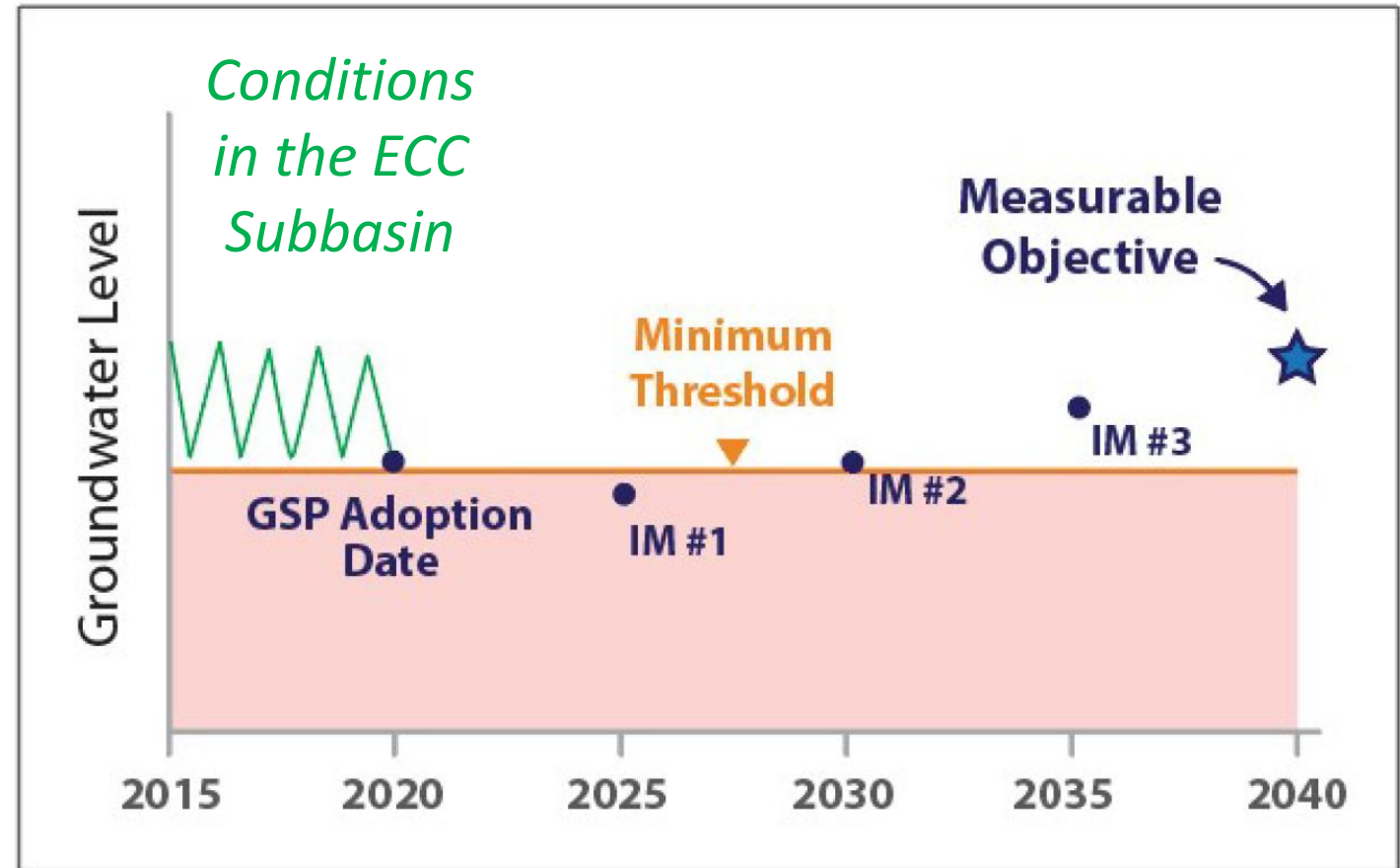
Sustainable Management Criteria, cont.

Minimum Thresholds

- Set at Representative Monitoring Points
- Set for each sustainability indicator
- Quantitative value triggering undesirable result

Measurable Objectives

- Quantitative goal that allows operation flexibility



Section 8- Projects and Management Actions

- Developed by GSAs
- Not anticipated to be needed but;
- Implemented if needed in response to potential causes of undesirable results

Projects may include:

- Direct recharge
- Aquifer Storage and Recovery (ASR)
- In-lieu recharge

Management Actions may include:

- Conservation
- Pumping restrictions
- Well location limitations

Projects and Management Actions, cont.

SGMA grants GSAs authorities to regulate wells:

Type	No.	Management Action
Wells	1	Restrict well spacing
	2	Require meter/ Withdrawal Fees/Tiered Pricing:
	3a	New Well Permitting Requirements: specific conditions that may include monitoring, usage reporting, and usage limits.
	3b	New Well Permitting Requirement: GSAs by their own discretions limit well completion zones

SGMA Regulations

Generally do not apply to de minimis users extracting < 2 acre-feet¹ per year. However, some management actions may apply such as to protect water quality through construction requirements.

1. The average household in California uses <1/2 to 1 acre-foot per year depending on location (various sources).

Projects and Management Actions, cont.

County Coordination

Management actions to address sustainability will require coordination between GSAs and Contra Costa County Environmental Health Division (for well permitting).

And, the GSP has identified a need (data gap) to inventory new, and possibly existing, wells which will also require coordination.

Section 9: Plan Implementation

1. Governance

- GSAs are exploring options such as an MOU used in preparing the GSP

2. Budget

- Funding needed for ongoing work to satisfy regulations
- GSAs reviewing projected costs and means to pay for costs
- Needs include monitoring, reporting, outreach and communication

3. Schedule

Plan Implementation: Budget

Estimated ECC GSP annual cost range: \$140,000 to \$245,000/year

Tasks covered by the 5-year budget

- Community Outreach and Education
- GSP Monitoring and Data Management
- GSP Reporting
 - Annual Reports
 - 5-year Update of GSP
- Grant Writing
- Response to comments from DWR on submitted GSP

Funding Sources

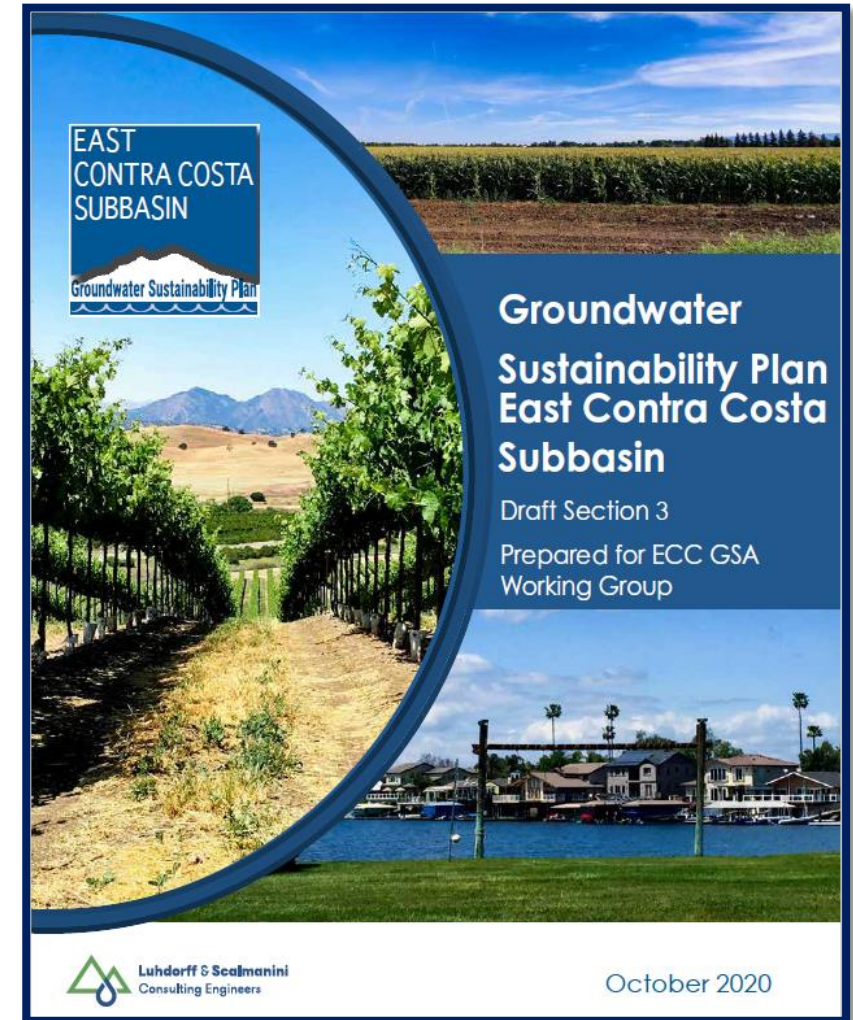
- Cost sharing options being evaluated
- Grants

Plan Implementation: 5-Year Schedule

Task	2022	2023	2024	2025	2026	2027
Plan Implementation						
GSP Submittal to DWR	X					
Outreach and Communication	Ongoing/ Continuous Activity					
Monitoring and Data Management	Ongoing/Continuous Activity					
Reporting						
Annual Reports	X	X	X	X	X	X
5-year GSP Evaluation Reports						X
DWR Review	DWR Review		Response to Review Comments	Approval		
GSA operating agreement	Groundwater Management under the GSP					

Upcoming Milestones

- Notice of Intent to Adopt
July 1 to September 28
- Final Public Comment Period for
Public Draft of entire GSP
September 1 to 30
- Publish Final GSP October 15
- Board Adoption Oct.-Dec. 2021
- Deadline to Submit January 31, 2022





Questions?

<https://www.eccc-irwm.org/sgma-documents-reports>

Thank you

Ryan Hernandez
Ryan.Hernandez@dcd.cccounty.us