

Contra Costa County Office of the Sheriff

Operational Information

For the Measure X Community Advisory Board



Mission Statement

THE OFFICE OF THE SHERIFF WORKS IN PARTNERSHIP WITH OUR DIVERSE COMMUNITY TO SAFEGUARD THE LIVES, RIGHTS, AND PROPERTY OF THE PEOPLE WE SERVE. WITH UNWAVERING DEDICATION, WE PROVIDE INNOVATIVE PROFESSIONAL LAW ENFORCEMENT SERVICES TO OUR COMMUNITY. WE ACCOMPLISH THIS MISSION BY MAINTAINING OUR CORE VALUES WHILE ALWAYS CONDUCTING OURSELVES WITH THE HIGHEST ETHICAL STANDARDS.

Sheriff David O. Livingston

HONOR COURAGE COMMITMENT LEADERSHIP TEAMWORK

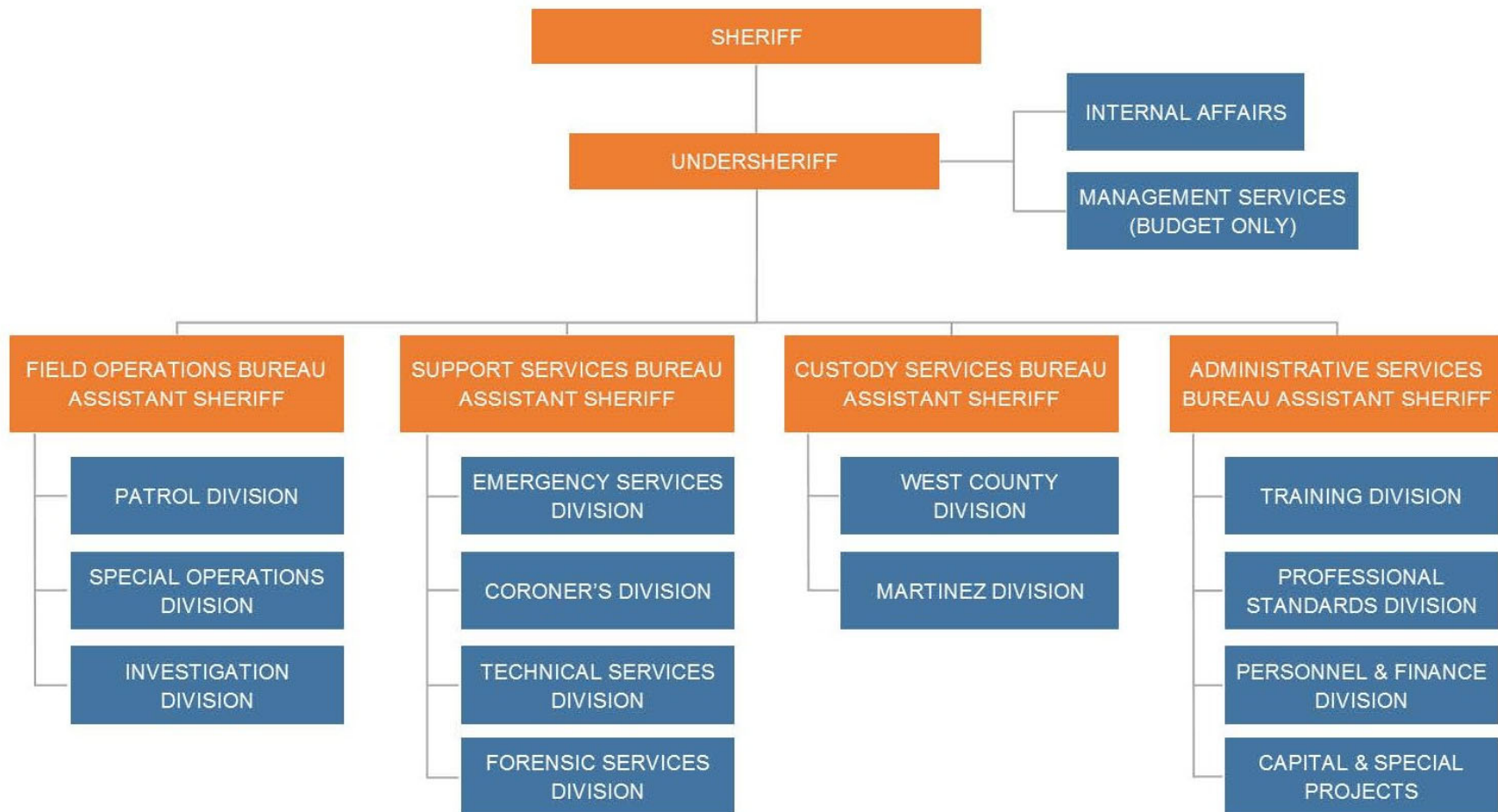


Contra Costa County Office of the Sheriff

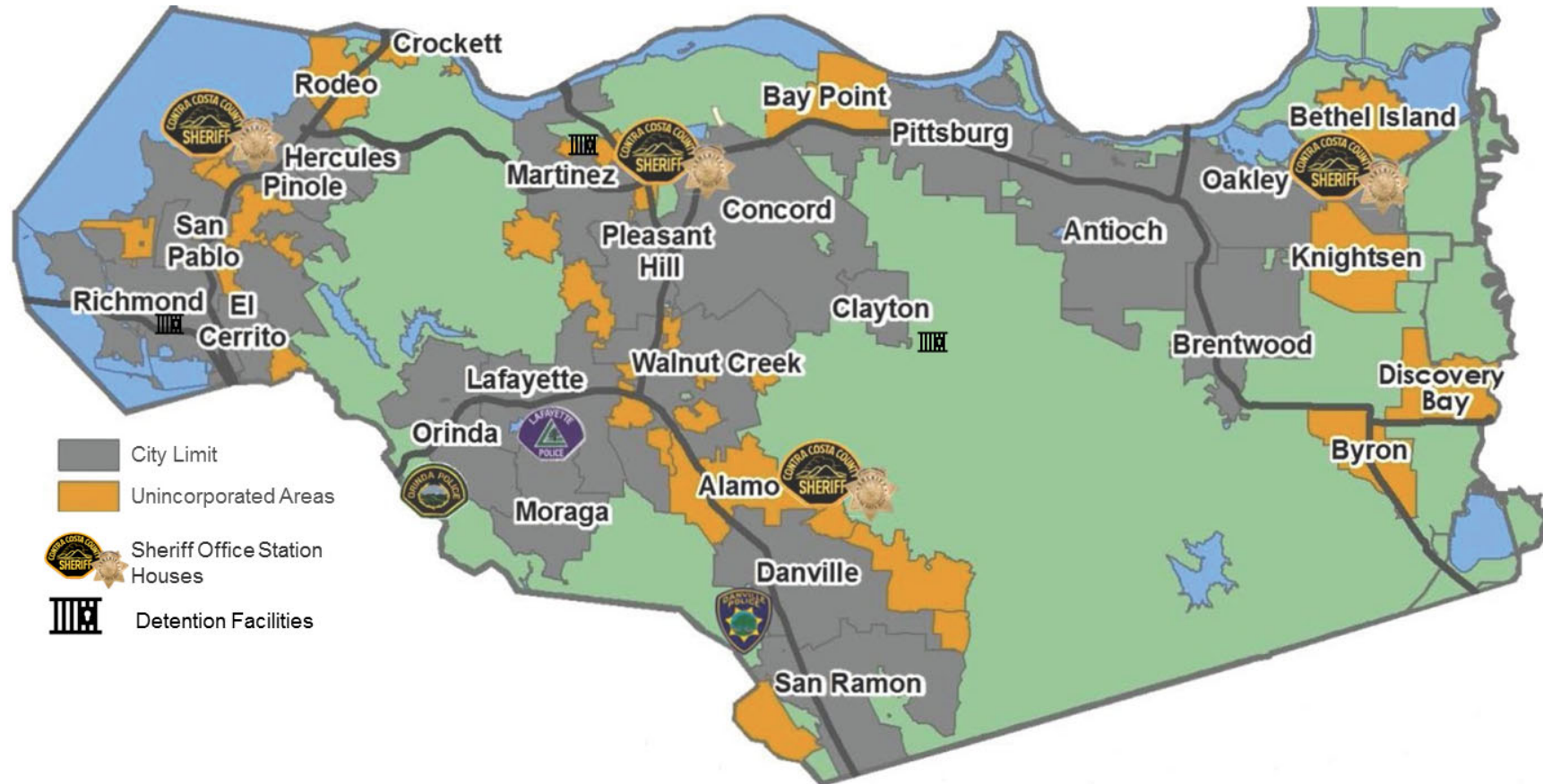
Largest law enforcement
agency in Contra Costa County

1075 employees, including 720
sworn officer and 355
professional staff

Organizational Chart



Office of the Sheriff Facilities and Station Houses

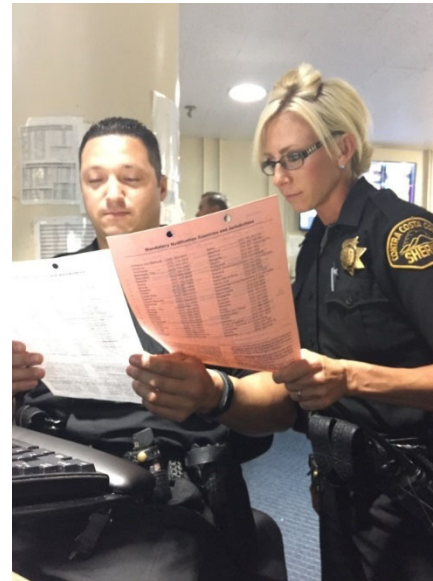


Bureau Overview – CUSTODY SERVICES

**The Custody Services Bureau consists of two Divisions:
the Martinez Detention Division and the West County
Detention Division**

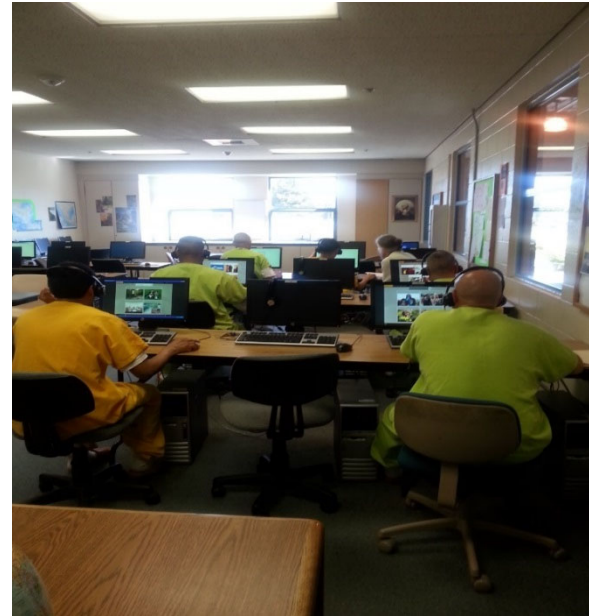


Martinez Detention Division



The Martinez Detention Division includes the Martinez Detention Facility (MDF), Marsh Creek Detention Facility (MCDF), Transportation, Classification, Training, Administration, and Court Security.

West County Detention Division



The West County Detention Division includes the West County Detention Facility (WCDF), Custody Alternative Facility (CAF), Food Services, Inmate Services and the Contra Costa County Adult School

Bureau Overview – FIELD OPERATIONS

The Field Operations Bureau Consists of three Divisions:

- Patrol Division
- Special Operations Division
- Investigation Division



Patrol Division

The Patrol Division consists of four Station Houses which patrol the unincorporated areas of the County:

- **Delta Station – East County**
- **Muir Station – Martinez / Bay Point**
- **Valley Station – Central County**
- **Bay Station – West County**

Additionally, the Patrol Division established a Watch Commander Program to ensure management supervision of all personnel 24 hours a day, seven days a week.



Patrol Division

The Patrol Division also consists of special policing districts and agencies under contract.

- Alamo – P2B
- Blackhawk – P2A
- Diablo – P3
- Roundhill – P5
- Crockett – P1
- Discovery Bay – P6
- Contra Costa Centre
- Contra Costa County Housing Authority



Patrol Division

The Patrol Division includes a Community Services Officer Program:

- Professional non-sworn support staff
- Provide supplemental patrol support for select crimes and calls
- Enforce ordinances and infractions
- Write reports
- Offer public assistance and crime prevention



Special Operations Division

Police Departments Under Contract:

Danville



Lafayette



Orinda



Agencies Under Contract:

A.C. Transit (Alameda-Contra Costa Transit)

Health Services Security Unit (HSSU)

Contra Costa Water District (Los Vaqueros Watershed)

Special Operations Division

Air Support Unit, *STARR*:

**Sheriff's
Tactical
Airborne
Reconnaissance
and Rescue**



Special Operations Division

Health Services Security Unit:

Contra Costa Regional Medical Center

Employment and Human Services
Department

- Antioch
- Brentwood
- Richmond
- Pleasant Hill
- North Richmond

Health Centers and Clinics

- Antioch
- Brentwood
- Concord Mental Health
- Concord Health Clinic
- Pittsburg
- San Pablo Adult Mental Health
- San Pablo West County Health Center
- North Richmond



Special Operations Division

The Marine Services Unit is comprised of Marine Patrol, and the Infrastructure Protection Team.



Investigation Division

The Investigation Division is divided into these areas of responsibility:

**Homicide Unit
Special Victims Unit
General Investigations Team
Violence Suppression Unit
Misdemeanor Complaints
Safe Streets Task Force
Community Services Unit
Civil Unit**



Bureau Overview – SUPPORT SERVICES

The Support Services Bureau consists of four Divisions:

- **Emergency Services Division**
- **Forensic Services Division**
- **Technical Services Division**
- **Coroner's Division**



Emergency Services Division

The Emergency Services Division Includes:

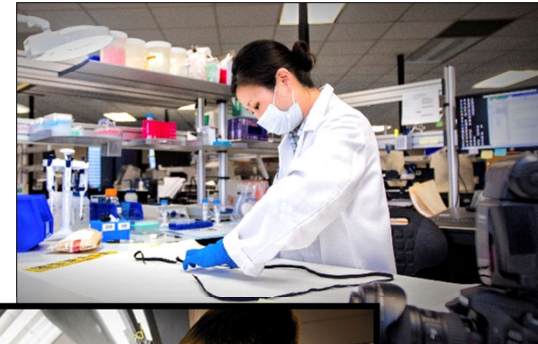
- **Office of Emergency Services**
- **Grants**
- **Homeland Security**
- **Community Warning System**
- **Emergency Services Support Unit**
- **Volunteer Services**
- **Mutual Aid**



Forensic Services Division

Criminalistics:

- Comparative Evidence (Firearms)
- Forensic Biology (DNA)
- Latent Prints
- Digital Evidence
- Crime Scene



Drugs, Alcohol and Toxicology:

- Drugs
- Alcohol (Blood & Breath Programs)
- Toxicology

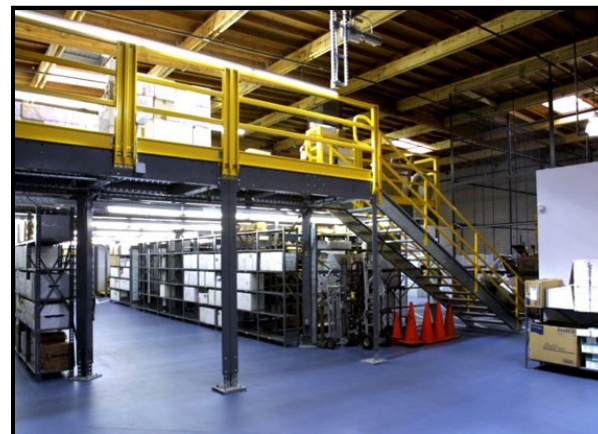


Forensic Services Division

The Property and Evidence Unit

Provides storage and disposition of all property and evidence submitted by the following agencies:

- **Contra Costa County Sheriff's Office**
- **Contra Costa County Superior Courts**
- **Danville P.D.**
- **Lafayette P.D.**
- **Orinda P.D.**



Technical Services Division

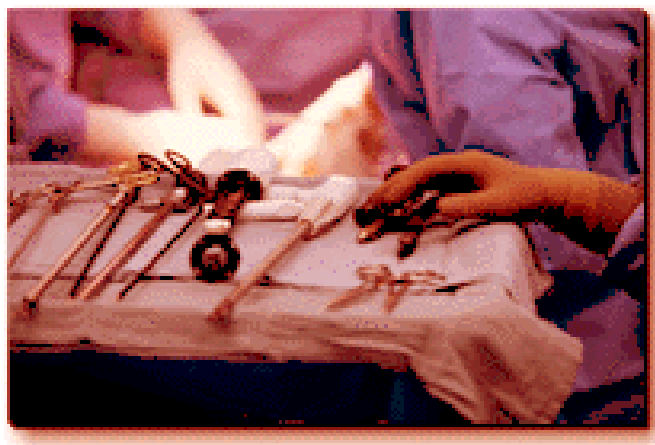
The Technical Services Division consists of the Central Communications Unit, Information and Network Services, Fleet Services Unit, and Records Unit/Central Identification



Coroner's Division

The Coroner's Division critical functions and responsibilities are to:

- **Determine the extent of inquiry to be made in all reported deaths**
- **Determine the medical cause and legal manner of death**
- **Determine the legal manner of all sudden, violent, unusual, and unattended deaths**



Bureau Overview – ADMINISTRATION

The Administration Bureau consists of three Divisions: The Training Division, Professional Standards Division, and Personnel and Finance Division.



Training Division

The Training Division operates the Law Enforcement Training Center which includes the Basic Academy and the In-Service Training Unit.



Professional Standards Division

Recruiting for all classifications

Background Investigations (Hiring)

Public Affairs Unit

Planning and Research Unit



Personnel and Finance Division

Personnel Unit:

- Processes Human Resource transactions
- Manages Long-Term Leave, Family Medical Leave, and Military and Temporary Modified Duty Programs
- Coordinates Worker's Compensation and serves as a liaison with Risk Management
- Maintains Personnel records

Fiscal Unit:

- Budget preparation and management
- Processes Accounts Payable and Accounts Receivable
- Manages payroll, contracts, and grants

