

Measure X Community Advisory Board Meeting 7/14/21

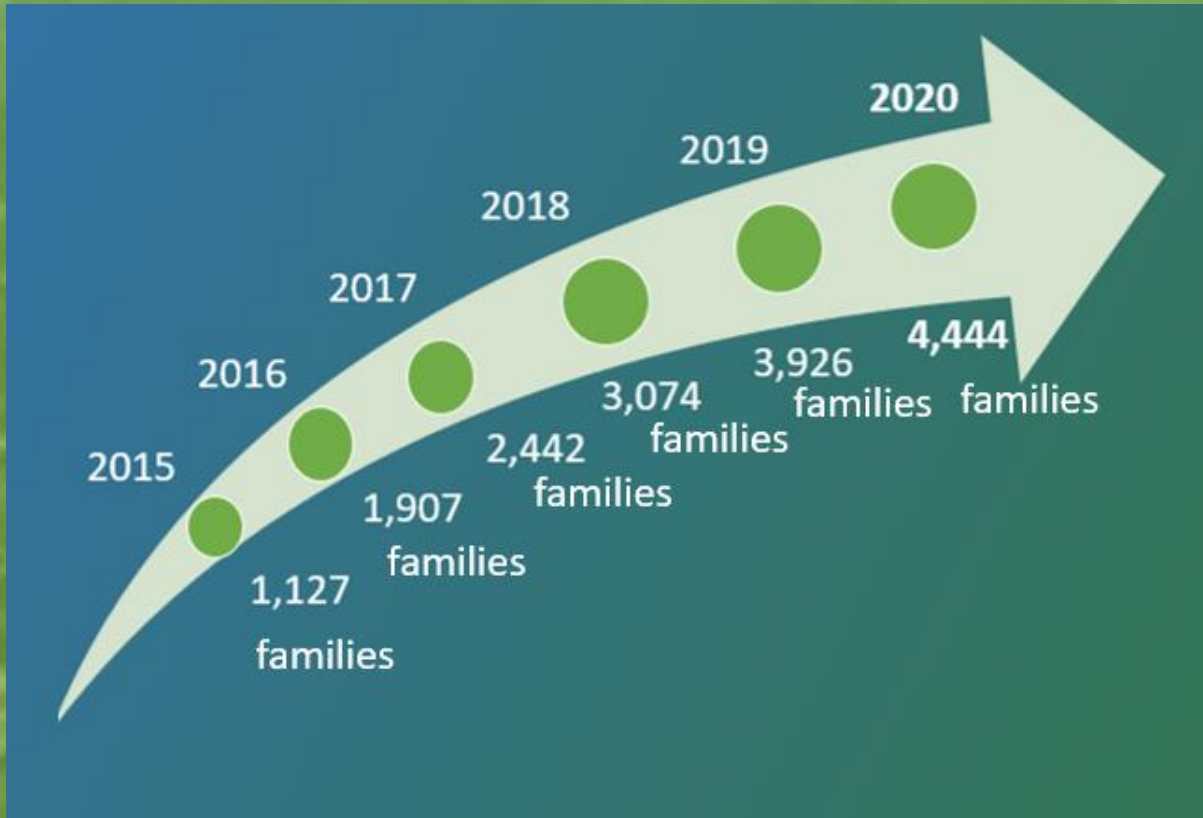


Maria Solorzano
Navigator

Violence is Interconnected



Clients at Family Justice Center



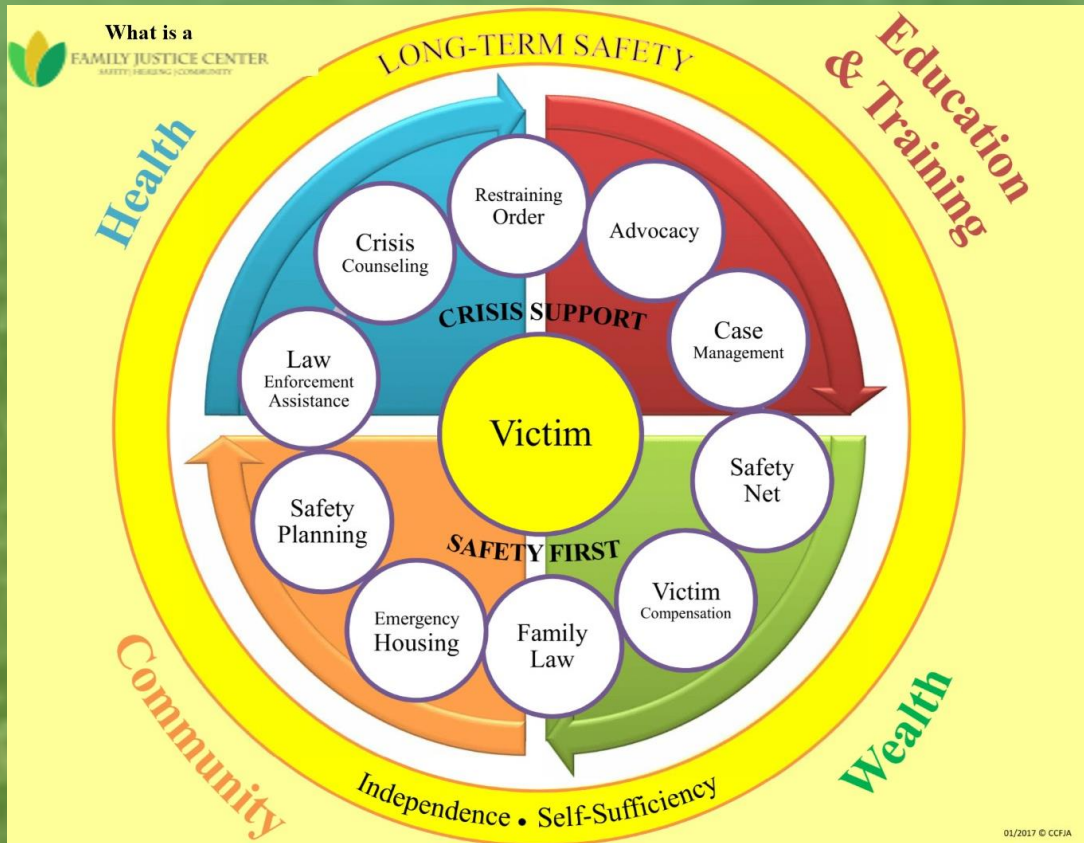
- 86% of our clients are female.
- 70% of our clients have children.
- 70% earn less than \$2,000/mo.
- 50% are Latinx; 15% African American.
- 30% speak primarily Spanish.
- Close to 20% undocumented.

Family Justice Center Partnership



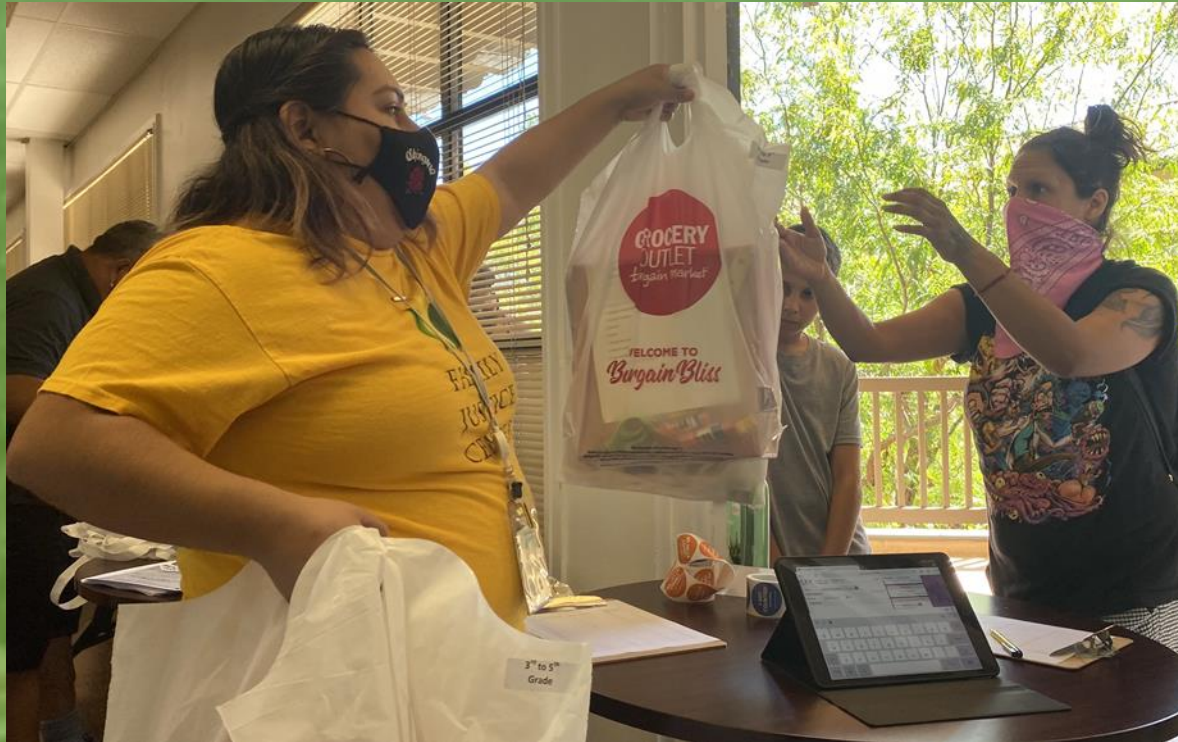
- 9 law enforcement agencies; 8 public agencies; 46 community partners
- Collaborative partnerships allow victims to get connected to resources more quickly.
- Crisis support, long term safety, community building

Violence is Preventable



- Addressing root causes: Systemic racism, lack of economic opportunities and gender norms
- Coordinated services (Family Justice Center)
- Community connectedness

Unmet Needs



- Civil legal assistance
- Community based victim advocates
- Childcare
- Housing (emergency and permanent)

Transformational Ideas

- Community Fellowship
- Flexible Financial Assistance
 - Best practice Housing First model
 - Rent, utilities, childcare, education, business start-up cost, transportation
- Community Based Restorative Justice Response (CHAT Collective Healing And Transformation)



Measure X Request

\$4 Million/Year

- Building Sustainable Infrastructure
 - Civil Legal Assistance: \$1 million/year
 - Community Victim Advocates: \$500,000/year
- Community Connectedness: \$500,000/year
- Flexible Financial Assistance: \$1 million/year
- Public Health: \$1 million/year