

EAST CONTRA COSTA SUBBASIN

East Contra Costa Subbasin Groundwater Sustainability Plan

Contra Costa County
Board of Supervisors,
Public Hearing
December 7, 2021
9:00 AM





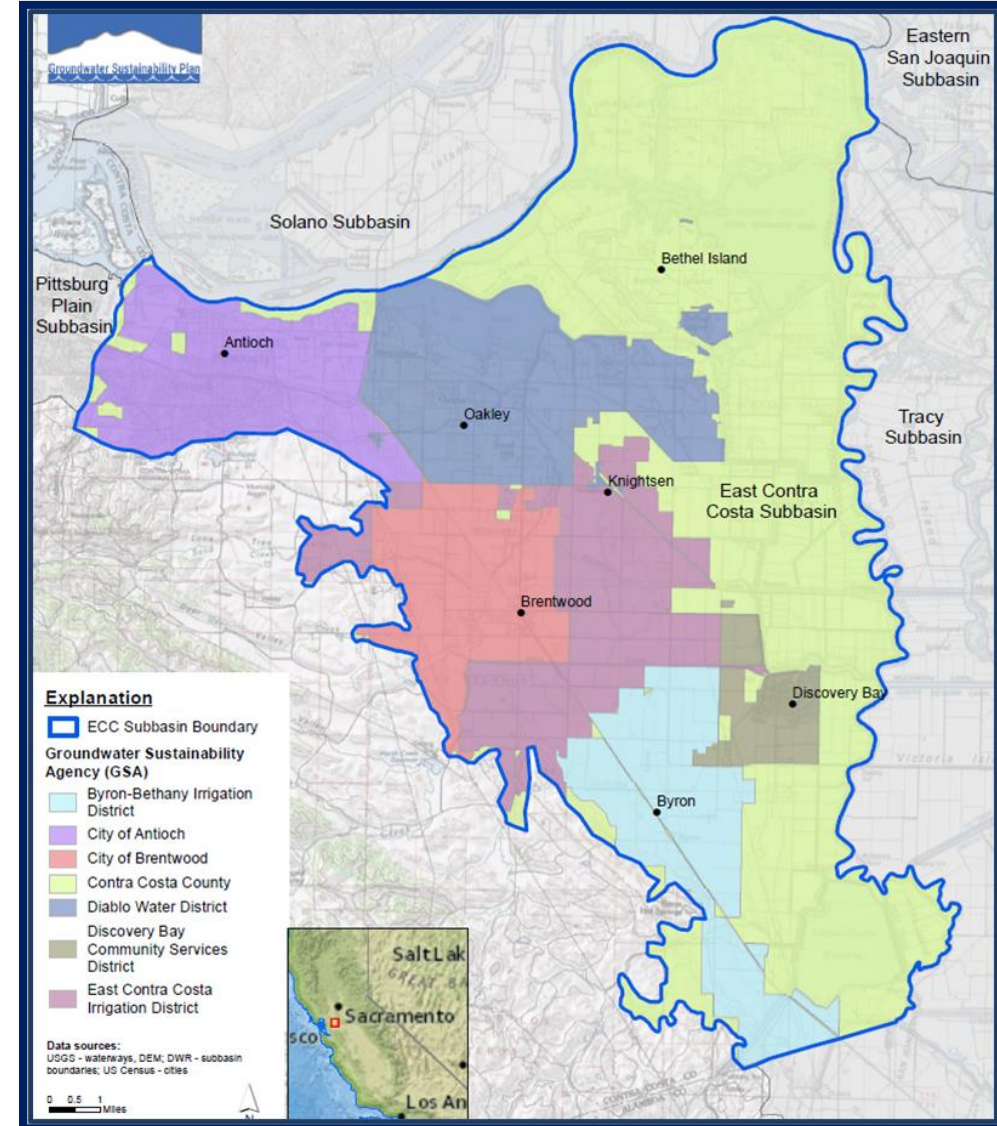
East Contra Costa Subbasin and SGMA

**Ryan Hernandez,
Department of Conservation and
Development, Water Agency**

- In 2014, the state passed the Sustainable Groundwater Management Act – **SGMA**
- SGMA requires groundwater to be managed by local public agencies called Groundwater Sustainability Agencies – **GSA**
- GSAs are responsible to ensure a groundwater basin is managed sustainably
- Sustainable management is conducted through the Groundwater Sustainability Plan - **GSP**

Introduction to SGMA

The GSP (Plan) is a plan to ensure that groundwater is sustainably managed over a 50-year planning and implementation horizon

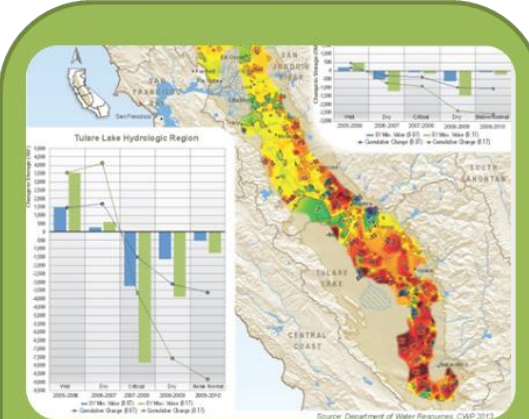


Sustainability Indicators

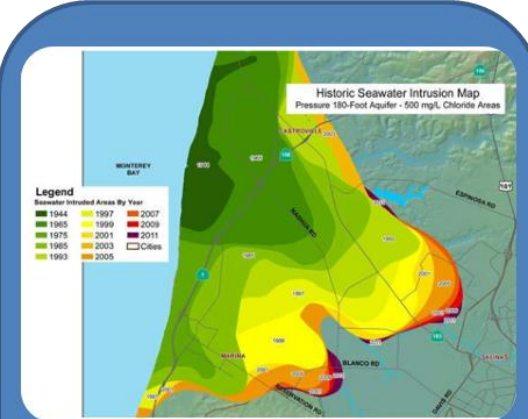
Avoiding
Groundwater
Conditions that
Cause
Significant and
Unreasonable.....



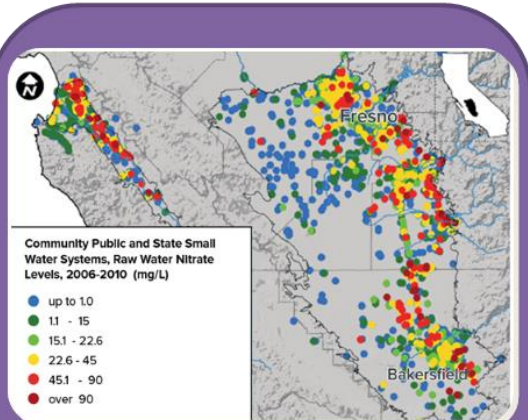
Lowering of GW Levels



Reduction of GW Storage



Seawater Intrusion



Degraded Water Quality



Land Subsidence



Depletion of Inter-connected Streams

Groundwater Use:

- Domestic
- Urban
- Agricultural
- Industrial
- Groundwater dependent ecosystems



Who the GSP affects

The GSP does **not** :

- affect or change water rights
- regulate individual domestic well owners (less than 2 AF or 650,000 gallons)
- mitigate pre-existing or native features of groundwater such as water quality



What a GSP is not

Also, it is **not**:

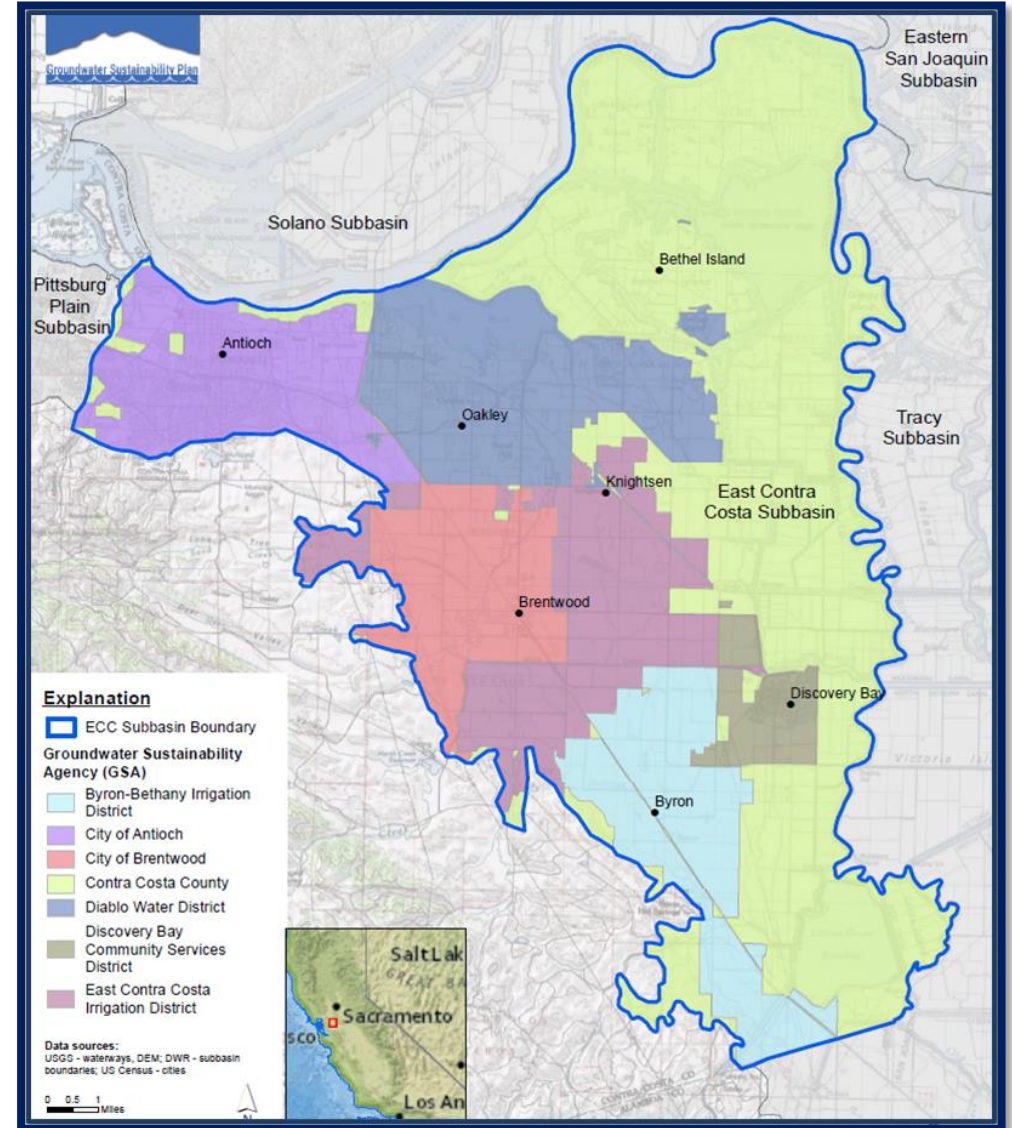
- A land use plan
- An environmental restoration plan
- A flood control plan
- Part of the Delta Conveyance Project



What a GSP is

The GSP is a plan to:

- ensure adequate groundwater supply for all beneficial uses and users in the Subbasin
- manage groundwater under climate change, sea level rise, and drought
- protect vulnerable users
- protect groundwater dependent ecosystems



What a GSP is

Under SGMA, GSAs have authorities to enact sustainability measures including:

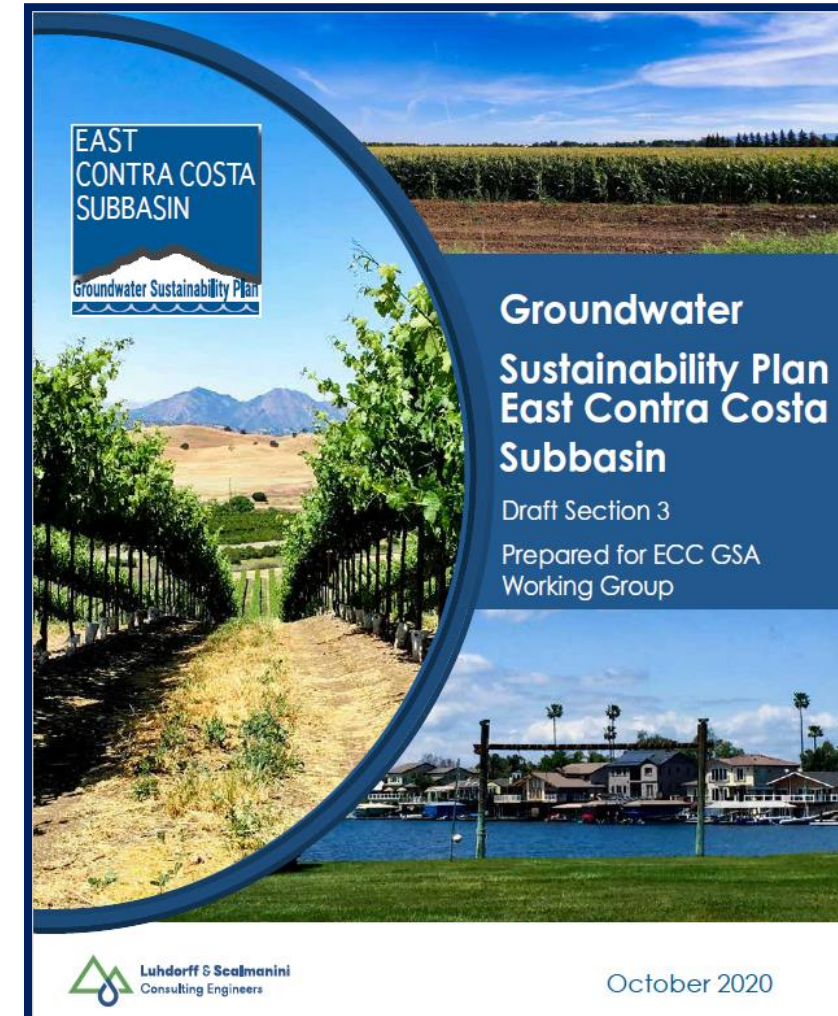
- Well monitoring
- Metering
- Pumping fees (does not apply to de minimis users)
- Well spacing restrictions

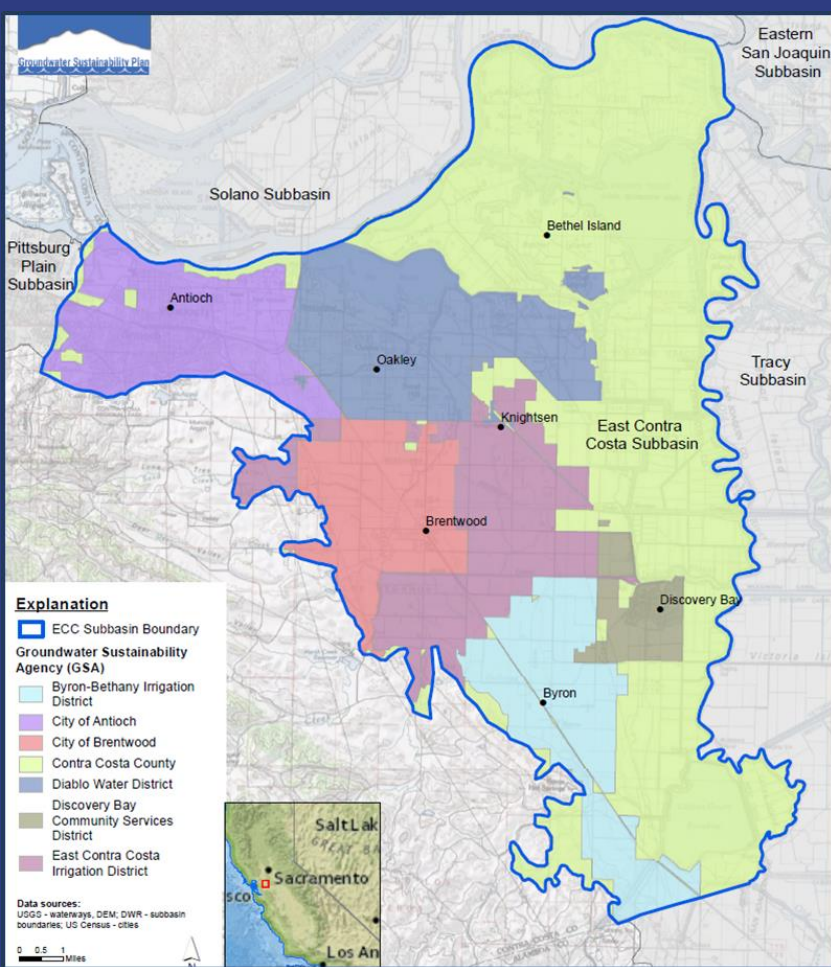


What a GSP is

Plan Sections

1. Introduction – Responsible Agencies
2. Plan Area – Water Resources, Land Use Elements, Environment
3. Basin Setting – Hydrogeology, Groundwater and Surface Water Conditions
4. Water Supply – Historical, Current, and Projected
5. Water Budget – Historical, Current and Projected Scenarios
6. Monitoring Networks – Sustainability Indicators
7. Sustainable Management Criteria – Goals
8. Projects and Management Actions – Implemented As-Needed
9. Plan Implementation – Budget and funding
10. Notice and Communication





 Byron –Bethany Irrigation District GSA Board of Directors	 City of Antioch GSA City Council	 City of Brentwood GSA City Council	 Contra Costa County GSA Board of Supervisors	 Contra Costa Water District Board of Directors	 Diablo Water District GSA Board of Directors	 Discovery Bay Community Services District GSA Board of Directors	 East Contra Costa Irrigation District GSA Board of Directors
--------------------------------------------------------------------------------------------------------------------------------------------------------------	-------------------------------------------------------------------------------------------------------------------------------	------------------------------------------------------------------------------------------------------------------------------------	----------------------------------------------------------------------------------------------------------------------------------------------	---------------------------------------------------------------------------------------------------------------------------------------------------	-------------------------------------------------------------------------------------------------------------------------------------------------	------------------------------------------------------------------------------------------------------------------------------------------------------------------------	--------------------------------------------------------------------------------------------------------------------------------------------------------------------

Agency Information

- What is a GSA?
- ECC GSA Information: 7 GSAs and CCWD
 - History of coordination and stewardship of East Contra Costa County water resources, including IRWMs and Basin Boundary Modification

Sustainability Goal for the ECC Subbasin



- To protect and maintain safe and reliable sources of groundwater for all beneficial uses and users.
- To ensure current and future groundwater demands are met under climate change.
- To establish and protect sustainable yield by achieving measurable objectives set forth in this GSP over the 50-year implementation and planning horizon.
- Avoid undesirable results.

Process for Adopting a GSP

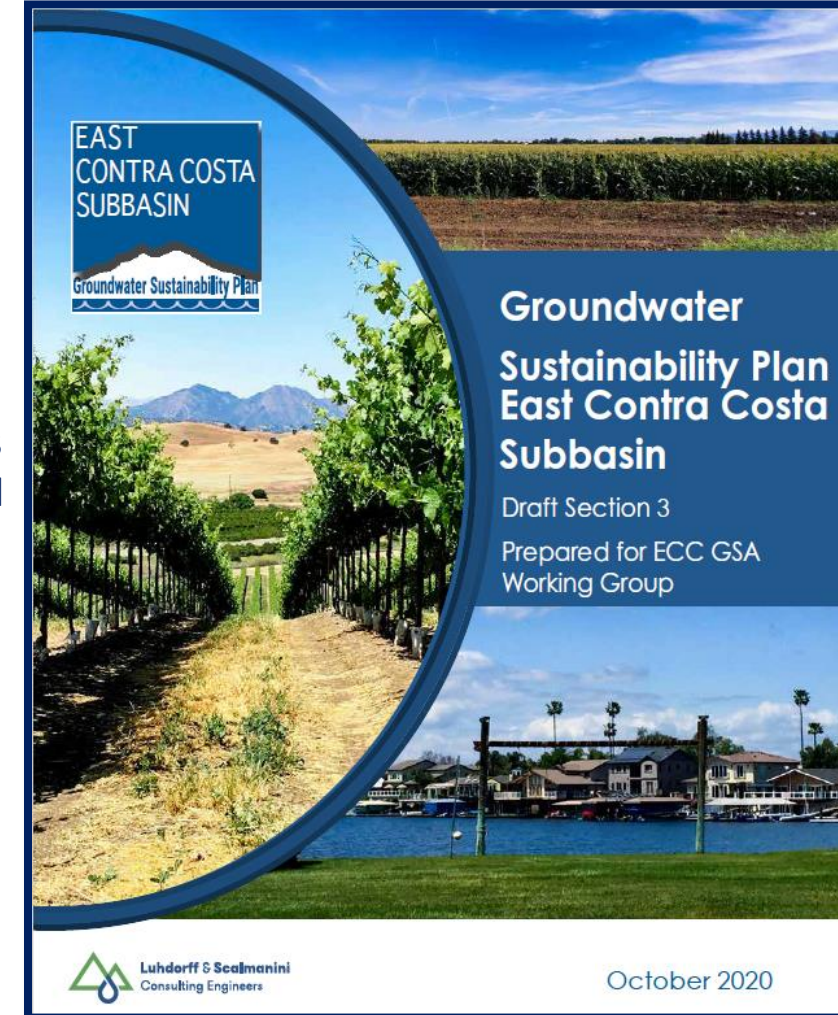
Groundwater Sustainability Plan

1. Public Outreach and Working Group Meetings:

- Over 40 meetings, materials posted on website, public surveys, interested parties email list, social media, Public Workshops, TWIC meetings, MAC Meetings (Bethel Island, Byron and Knightsen), non-County GSA board meetings.

2. Adoption – Each GSAs shall adopt the Final GSP

3. Deadline – Submit GSP to state DWR January 31, 2022





Why the Plan is Important

- Maintain sustainable groundwater management
- Protect your well
- Maintain local control
- Eligibility for benefits/grants
- Coordination with other planning processes
- Comply with State regulations

10/05/2009

Key Findings: ECC Subbasin Conditions

The ECC Subbasin is in a stable condition

1. Chronic Groundwater Level Lowering

Not present

2. Groundwater Storage

Stable

3. Seawater Intrusion

Not present

4. Groundwater Quality

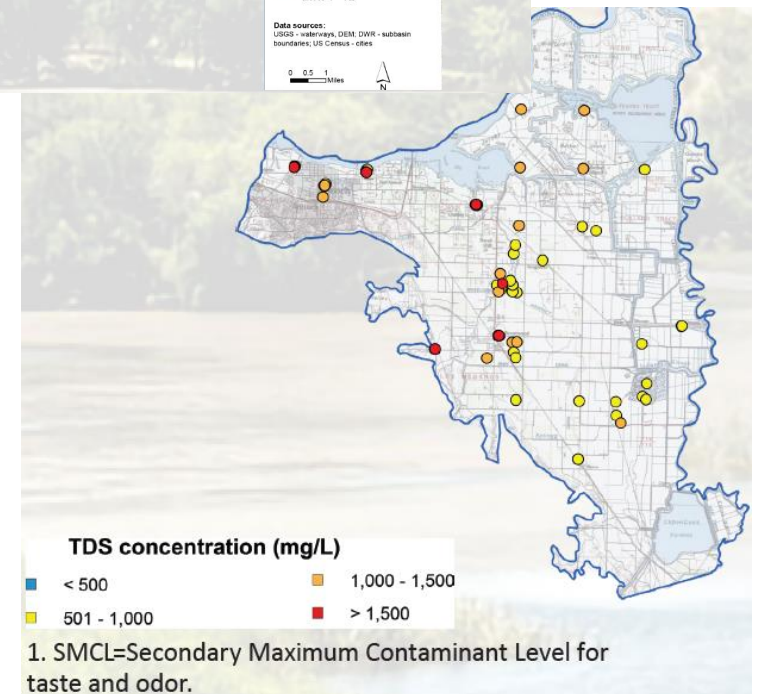
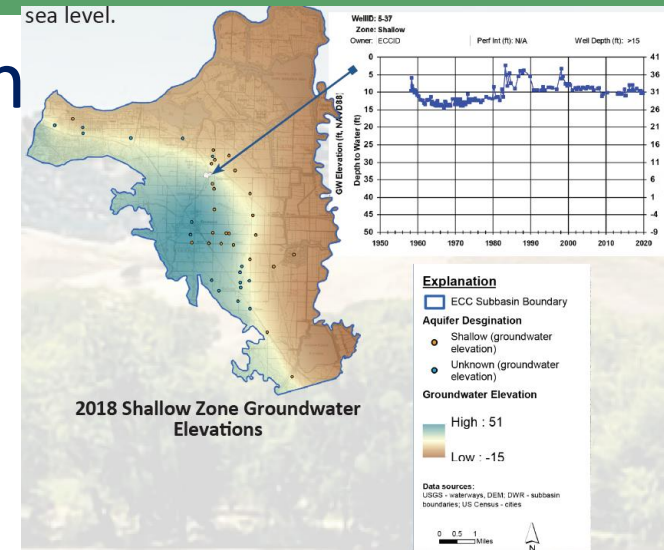
No degradation due to pumping

5. Land Subsidence due to groundwater pumping

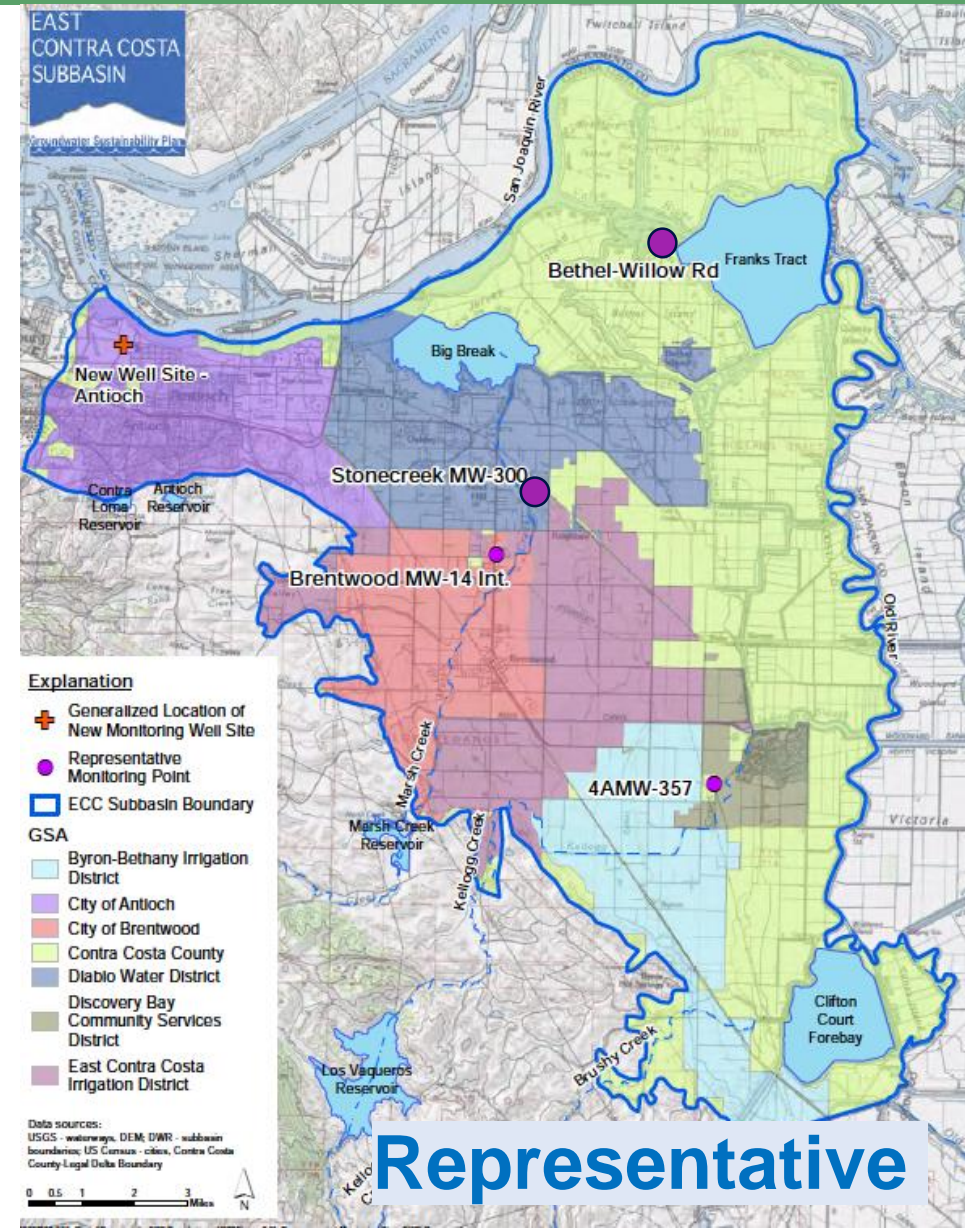
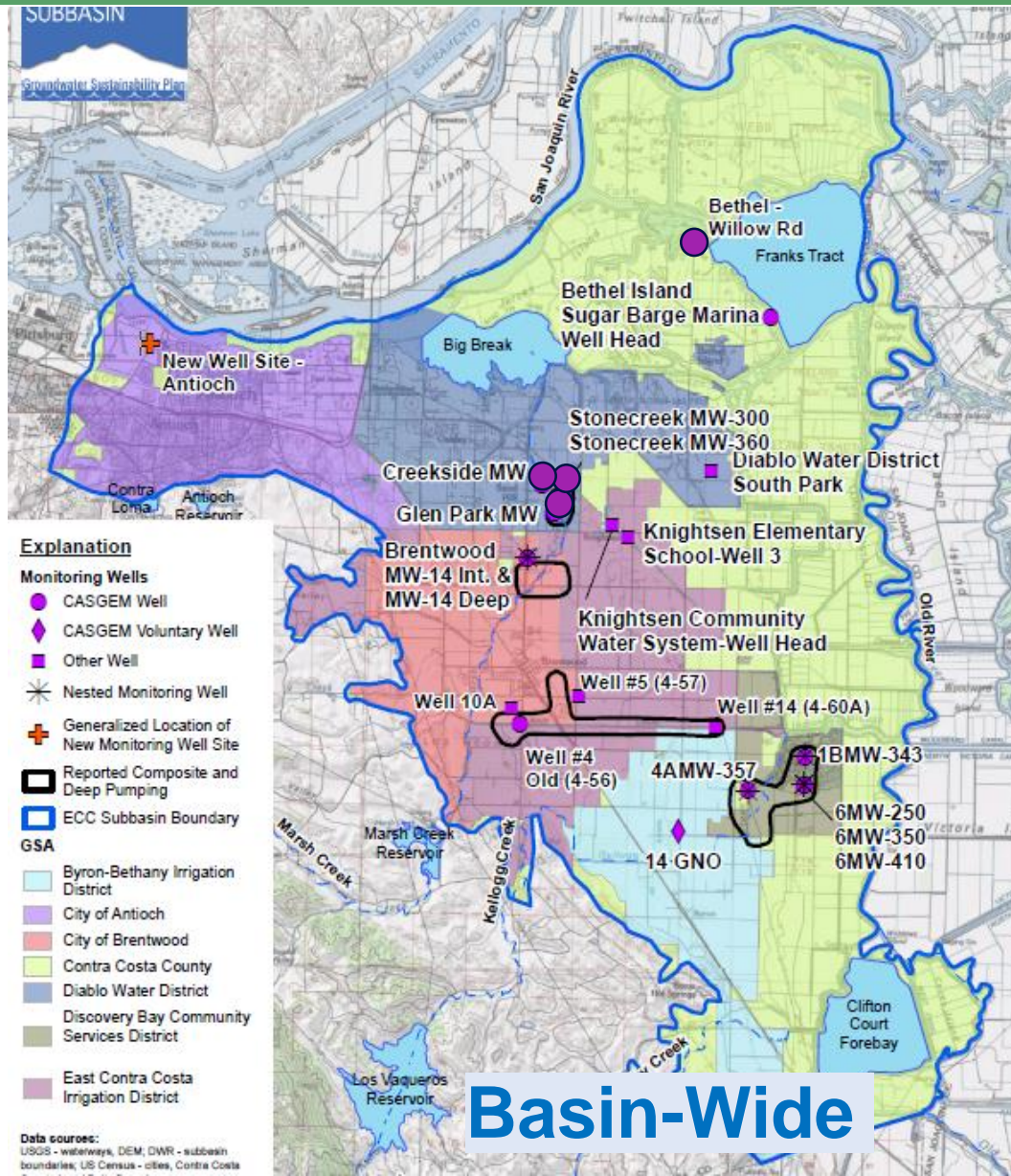
Not present

6. Surface Water Depletion due to groundwater pumping

Not Present



GSP Implementation: Monitoring commences now



- **If necessary, GSAs may develop projects and management actions for sustainability**
 - Project Examples: Groundwater recharge, Conjunctive use of surface water and groundwater, Water exchanges
 - Management Action Examples: Conservation, Pumping allocations, Well location restrictions
- **For now, the GSP requires installation of additional wells, groundwater monitoring, annual reporting of results to DWR and a 5-year comprehensive review.**

Questions?



More Information

- ECC GSP Plan: <https://www.eccc-irwm.org/sgma-documents-reports>
- Email: groundwaterinfo@dcd.cccounty.us