

PARCEL MAP
SUBDIVISION MS 05-0053

LANDS OF MAIN STONE CORPORATION
PER DOCUMENT 2020-058597 RECORDED MARCH 26,
2020, CONTRA COSTA COUNTY OFFICIAL RECORDS,
BEING A PORTION OF SECTIONS 25,
26, 27, 34, 35, T.2N., R.3E., M.D.B.&M.,
COMMONLY KNOWN AS HOLLAND TRACT
KNIGHTSEN

CONTRA COSTA COUNTY CALIFORNIA
NO SCALE OCTOBER 2020

MERIDIAN SURVEYING ENGINEERING, INC.

CORPORATE OFFICE
2550 RAY AVE SUITE 4100
SAN FRANCISCO, CA 94109
(415) 440-4131

777 BAY ST
SAN RAFAEL, CA 94901
(415) 656-5469



OWNER'S STATEMENT
THE UNDERSIGNED, BEING THE ONLY PARTIES HAVING A RECORD TITLE INTEREST IN
THE LANDS DELINEATED AND EMBRACED WITHIN THE HEAVY BLACK LINES UPON THIS
MAP, DO HEREBY CONSENT TO THE PREPARATION AND RECORDATION OF THE SAME.
THIS MAP SHOWS ALL RECORD EASEMENTS DISCLOSED IN THE TITLE REPORT LISTED
HEREON, EXCEPT AS NOTED BELOW.

BY: MAIN STONE CORPORATION, A CALIFORNIA CORPORATION

Pierre H. Perret
PIERRE H. PERRET, PRESIDENT
DATE 1-5-2021

Marc R. Frelier
MARC R. FRELIER, VICE-PRESIDENT
DATE 1-5-2021

OWNER'S ACKNOWLEDGMENT

A NOTARY PUBLIC OR OTHER OFFICER COMPLETING THIS CERTIFICATE VERIFIES
THIS CERTIFICATE IS ATTACHED, AND NOT THE TRUTHFULNESS, ACCURACY, OR
VALIDITY OF THAT DOCUMENT

STATE OF CALIFORNIA }
COUNTY OF Inyo } SS
ON 1/5/2021 BEFORE ME, Lori L. Norman, Notary Public
PERSONALLY APPEARED Pierre H. Perret and

Marc R. Frelier
WHO PRESENTED TO ME SUFFICIENT EVIDENCE TO BE THE
PERSON(S) WHOSE NAME(S) WAS/WERE SUBSCRIBED TO THE WITHIN INSTRUMENT, AND
ACKNOWLEDGED TO ME THAT HE/SHE (THEY) EXECUTED THE SAME IN HIS/HER/ITS
OTHER AUTHORIZED CAPACITY(IES), AND THAT BY HIS/HER/ITS SIGNATURE(S) ON
THE INSTRUMENT THE PERSON(S), OR THE ENTITY UPON BEHALF OF WHICH THE
PERSON(S) ACTED, EXECUTED THE INSTRUMENT.

I CERTIFY UNDER PENALTY OF PERJURY UNDER THE LAWS OF THE STATE OF
CALIFORNIA THAT THE FOREGOING PARAGRAPH IS TRUE AND CORRECT.

WITNESS MY HAND AND OFFICIAL SEAL

Lori L. Norman
SIGNATURE (SEAL)

SURVEYOR'S STATEMENT

THIS MAP WAS PREPARED BY ME OR UNDER MY DIRECTION AND IS BASED UPON
A FIELD SURVEY IN CONFORMANCE WITH THE REQUIREMENTS OF THE SUBDIVISION
MAP ACT AND LOCAL ORDINANCE AT THE REQUEST OF MARC PERRET AND PIERRE
FRELIER. THIS MAP SUBSTANTIALLY CONFORMS TO THE CONDITIONALLY APPROVED
TENTATIVE MAP. I FURTHER STATE THAT THE MONUMENTS SHOWN HEREON ARE OF
THE CHARACTER AND OCCUPY THE POSITIONS INDICATED, AND WILL BE SUFFICIENT
TO ENABLE THE SURVEY TO BE RETRACTED.



Stanley T. Gray
STANLEY T. GRAY
P.L.S. 6784
DATE 1/5/2021

CLERK OF THE BOARD OF SUPERVISORS' CERTIFICATE
STATE OF CALIFORNIA
COUNTY OF CONTRA COSTA

I, DAVID TWA, CLERK OF THE BOARD OF SUPERVISORS AND THE COUNTY
ADMINISTRATOR OF CONTRA COSTA COUNTY, STATE OF CALIFORNIA DO HEREBY
CERTIFY THAT THE ABOVE AND FORGING MAP ENTERED REVISION MS
05-0053 WAS PREPARED BY ME OR UNDER MY SUPERVISION, AS PROVIDED BY
LAW AT A REGULAR MEETING THEREOF HELD ON THE _____ DAY
OF _____, 20____, AND THAT THE SAID BOARD DID THEREUPON
BY RESOLUTION DULY PASSED AND ADOPTED AT SAID MEETING, APPROVE SAID
MAP AND DID ACCEPT, SUBJECT TO INSTALLATION AND ACCEPTANCE OF
IMPROVEMENTS, ON BEHALF OF THE PUBLIC ALL STREETS, EASERS, AVENUES OR
EASEMENTS SHOWN THEREON AS DEDICATED TO PUBLIC USE.

I FURTHER CERTIFY THAT ALL TAX LIENS HAVE BEEN SATISFIED AND THAT ALL
BONDS AS REQUIRED BY LAW TO ACCOMPANY THE WITHIN MAP HAVE BEEN
APPROVED BY THE BOARD OF SUPERVISORS OF CONTRA COSTA COUNTY AND ARE
ON FILE IN MY OFFICE.

IN WITNESS WHEREOF, I HAVE SET MY HAND ON THIS _____ DAY
OF _____, 20____.

DAVID TWA
CLERK OF THE BOARD OF SUPERVISORS

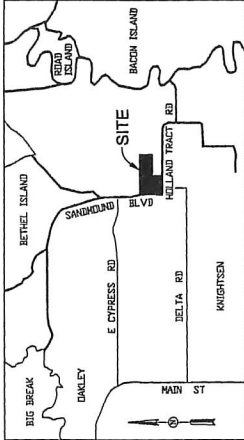
BY: _____
DEPUTY CLERK

RECORDER'S STATEMENT

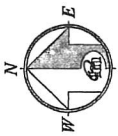
FILED THIS _____ DAY OF _____, 20____ AT _____ IN
BOOK _____ OF PARCEL MAPS, AT PAGE(S) _____ AT THE REQUEST OF

DOCUMENT NO: _____
DEBORAH COOPER
COUNTY RECORDER
COUNTY OF CONTRA COSTA, CALIFORNIA

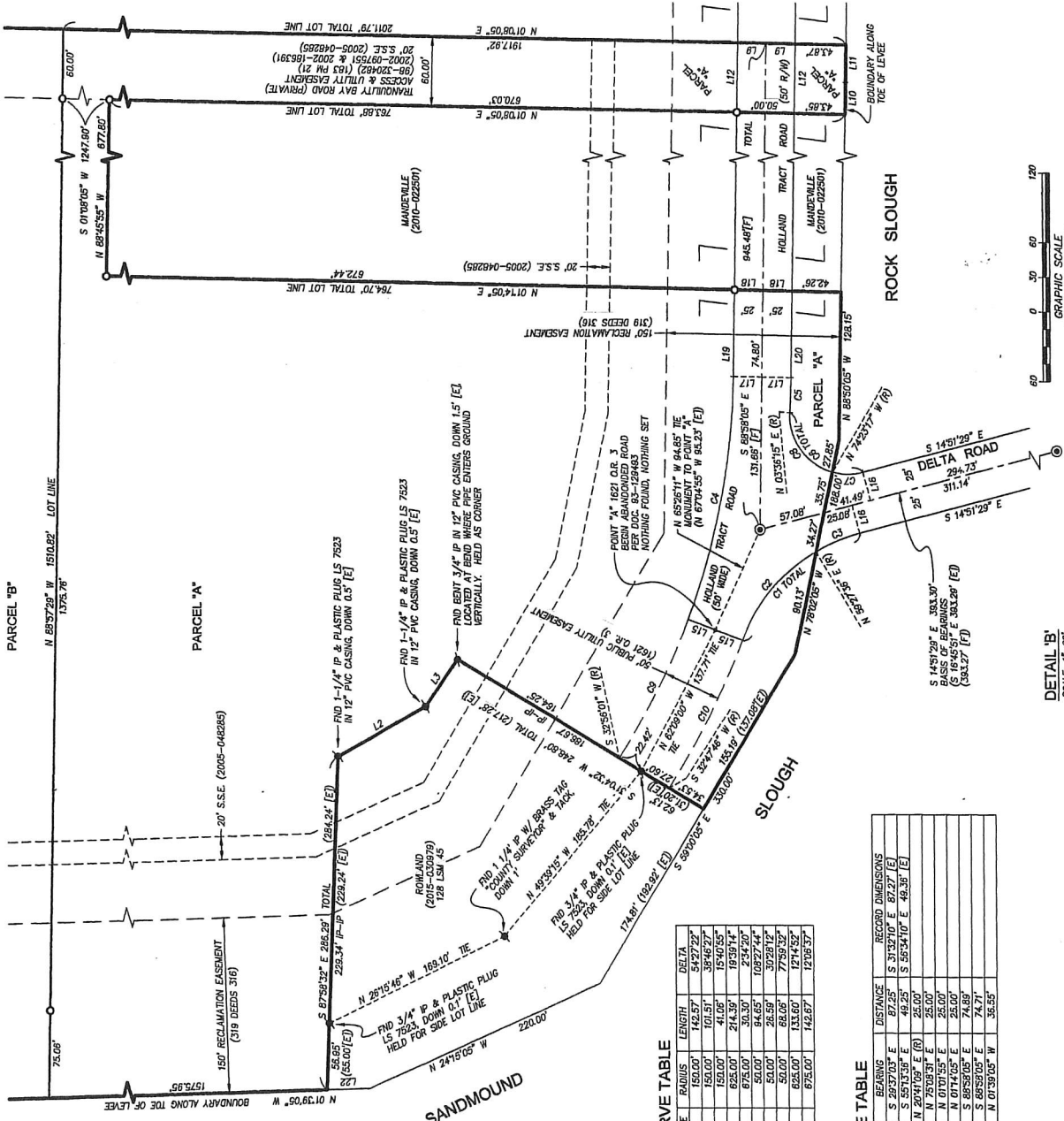
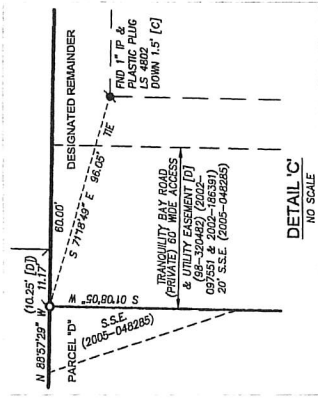
BY: _____
DEPUTY COUNTY RECORDER



VICINITY MAP
NO SCALE



- LEGEND**
- BOUNDARY
 - LOT LINE
 - EASEMENT LINE
 - RADIAL / TIE LINE
 - ENVIRONMENTAL EASEMENT LINE
 - FOUND MONUMENT AS NOTED
 - SET REBAR & PLASTIC CAP PLUS 8784*
 - FOUND COUNTY MONUMENT, 2" x 1/2" BRASS
 - RECORDED DIMENSION PER REFERENCE ([A], [B], [C], [D], [E], [F], [G], [H], [I], [J], [K], [L], [M], [N], [O], [P], [Q], [R], [S], [T], [U], [V], [W], [X], [Y], [Z], [AA], [AB], [AC], [AD], [AE], [AF], [AG], [AH], [AI], [AJ], [AK], [AL], [AM], [AN], [AO], [AP], [AQ], [AR], [AS], [AT], [AU], [AV], [AW], [AX], [AY], [AZ], [BA], [BB], [BC], [BD], [BE], [BF], [BG], [BH], [BI], [BJ], [BK], [BL], [BM], [BN], [BO], [BP], [BQ], [BR], [BS], [BT], [BU], [BV], [BW], [BX], [BY], [BZ], [CA], [CB], [CC], [CD], [CE], [CF], [CG], [CH], [CI], [CJ], [CK], [CL], [CM], [CN], [CO], [CP], [CQ], [CR], [CS], [CT], [CU], [CV], [CW], [CX], [CY], [CZ], [DA], [DB], [DC], [DD], [DE], [DF], [DG], [DH], [DI], [DJ], [DK], [DL], [DM], [DN], [DO], [DP], [DQ], [DR], [DS], [DT], [DU], [DV], [DW], [DX], [DY], [DZ], [EA], [EB], [EC], [ED], [EE], [EF], [EG], [EH], [EI], [EJ], [EK], [EL], [EM], [EN], [EO], [EP], [EQ], [ER], [ES], [ET], [EU], [EV], [EW], [EX], [EY], [EZ], [FA], [FB], [FC], [FD], [FE], [FF], [FG], [FH], [FI], [FJ], [FK], [FL], [FM], [FN], [FO], [FP], [FQ], [FR], [FS], [FT], [FU], [FV], [FW], [FX], [FY], [FZ], [GA], [GB], [GC], [GD], [GE], [GF], [GG], [GH], [GI], [GJ], [GK], [GL], [GM], [GN], [GO], [GP], [GQ], [GR], [GS], [GT], [GU], [GV], [GW], [GX], [GY], [GZ], [HA], [HB], [HC], [HD], [HE], [HF], [HG], [HH], [HI], [HJ], [HK], [HL], [HM], [HN], [HO], [HP], [HQ], [HR], [HS], [HT], [HU], [HV], [HW], [HX], [HY], [HZ], [IA], [IB], [IC], [ID], [IE], [IF], [IG], [IH], [II], [IJ], [IK], [IL], [IM], [IN], [IO], [IP], [IQ], [IR], [IS], [IT], [IU], [IV], [IW], [IX], [IY], [IZ], [JA], [JB], [JC], [JD], [JE], [JF], [JG], [JH], [JI], [JJ], [JK], [JL], [JM], [JN], [JO], [JP], [JQ], [JR], [JS], [JT], [JU], [JV], [JW], [JX], [JY], [JZ], [KA], [KB], [KC], [KD], [KE], [KF], [KG], [KH], [KI], [KJ], [KK], [KL], [KM], [KN], [KO], [KP], [KQ], [KR], [KS], [KT], [KU], [KV], [KW], [KX], [KY], [KZ], [LA], [LB], [LC], [LD], [LE], [LF], [LG], [LH], [LI], [LJ], [LK], [LL], [LM], [LN], [LO], [LP], [LQ], [LR], [LS], [LT], [LU], [LV], [LW], [LX], [LY], [LZ], [MA], [MB], [MC], [MD], [ME], [MF], [MG], [MH], [MI], [MJ], [MK], [ML], [MN], [MO], [MP], [MQ], [MR], [MS], [MT], [MU], [MV], [MW], [MX], [MY], [MZ], [NA], [NB], [NC], [ND], [NE], [NF], [NG], [NH], [NI], [NJ], [NK], [NL], [NM], [NO], [NP], [NQ], [NR], [NS], [NT], [NU], [NV], [NW], [NX], [NY], [NZ], [OA], [OB], [OC], [OD], [OE], [OF], [OG], [OH], [OI], [OJ], [OK], [OL], [OM], [ON], [OO], [OP], [OQ], [OR], [OS], [OT], [OU], [OV], [OW], [OX], [OY], [OZ], [PA], [PB], [PC], [PD], [PE], [PF], [PG], [PH], [PI], [PJ], [PK], [PL], [PM], [PN], [PO], [PP], [PQ], [PR], [PS], [PT], [PU], [PV], [PW], [PX], [PY], [PZ], [QA], [QB], [QC], [QD], [QE], [QF], [QG], [QH], [QI], [QJ], [QK], [QL], [QM], [QN], [QO], [QP], [QQ], [QR], [QS], [QT], [QU], [QV], [QW], [QX], [QY], [QZ], [RA], [RB], [RC], [RD], [RE], [RF], [RG], [RH], [RI], [RJ], [RK], [RL], [RM], [RN], [RO], [RP], [RQ], [RR], [RS], [RT], [RU], [RV], [RW], [RX], [RY], [RZ], [SA], [SB], [SC], [SD], [SE], [SF], [SG], [SH], [SI], [SJ], [SK], [SL], [SM], [SN], [SO], [SP], [SQ], [SR], [SS], [ST], [SU], [SV], [SW], [SX], [SY], [SZ], [TA], [TB], [TC], [TD], [TE], [TF], [TG], [TH], [TI], [TJ], [TK], [TL], [TM], [TN], [TO], [TP], [TQ], [TR], [TS], [TT], [TU], [TV], [TW], [TX], [TY], [TZ], [UA], [UB], [UC], [UD], [UE], [UF], [UG], [UH], [UI], [UJ], [UK], [UL], [UM], [UN], [UO], [UP], [UQ], [UR], [US], [UT], [UU], [UV], [UW], [UX], [UY], [UZ], [VA], [VB], [VC], [VD], [VE], [VF], [VG], [VH], [VI], [VJ], [VK], [VL], [VM], [VN], [VO], [VP], [VQ], [VR], [VS], [VT], [VU], [VV], [VW], [VX], [VY], [VZ], [WA], [WB], [WC], [WD], [WE], [WF], [WG], [WH], [WI], [WJ], [WK], [WL], [WM], [WN], [WO], [WP], [WQ], [WR], [WS], [WT], [WU], [WV], [WW], [WX], [WY], [WZ], [XA], [XB], [XC], [XD], [XE], [XF], [XG], [XH], [XI], [XJ], [XK], [XL], [XM], [XN], [XO], [XP], [XQ], [XR], [XS], [XT], [XU], [XV], [XW], [XX], [XY], [XZ], [YA], [YB], [YC], [YD], [YE], [YF], [YG], [YH], [YI], [YJ], [YK], [YL], [YM], [YN], [YO], [YP], [YQ], [YR], [YS], [YT], [YU], [YV], [YW], [YX], [YY], [YZ], [ZA], [ZB], [ZC], [ZD], [ZE], [ZF], [ZG], [ZH], [ZI], [ZJ], [ZK], [ZL], [ZM], [ZN], [ZO], [ZP], [ZQ], [ZR], [ZS], [ZT], [ZU], [ZV], [ZW], [ZX], [ZY], [ZZ]



PARCEL MAP
SUBDIVISION MS 05-0053
 LANDS OF MAIN STONE CORPORATION
 PER CONCEPT 2020-086897 RECORDED MARCH 26,
 2020, CONTRA COSTA COUNTY OFFICIAL RECORDS,
 BEING A PORTION OF SECTIONS 25,
 26, 27, 34, 35, T21N, R3E., M.D.B.60M.,
 COMMONLY KNOWN AS HOLLAND TRACT
 KNIGHTSEN

CONTRA COSTA COUNTY CALIFORNIA
 SCALE 1" = 60'
 OCTOBER 2020
MERIDIAN SURVEYING ENGINEERING, INC.
 850 UNIVERSITY AVE
 777 GRAND AVE #202
 SAN FRANCISCO, CA 94109
 SAN RAFAEL, CA 94901
 (415) 440-4031
 (415) 458-5450

A.P.N. 023-010-010, 023-020-001 & 023-060-001 JOB 14115 SHEET 3 OF 3

CURVE TABLE

CURVE	RADIUS	LENGTH	DELTA
C1	150.00'	142.57'	54°27'22"
C2	150.00'	101.51'	38°46'55"
C3	625.00'	241.39'	18°32'14"
C4	675.00'	30.30'	2°34'20"
C5	50.00'	84.65'	109°27'44"
C6	50.00'	26.59'	30°20'12"
C7	50.00'	68.06'	77°59'32"
C8	625.00'	133.60'	12°14'52"
C9	675.00'	142.87'	12°08'37"

LINE TABLE

LINE	BEARING	DISTANCE	RECORD DIMENSIONS
L1	S 28°57'05" E	87.25'	S 31°32'10" E 87.27' [E]
L2	S 88°57'05" E	25.00'	S 88°57'05" E 25.00' [E]
L3	N 20°14'05" E (R)	25.00'	S 55°54'10" E 46.50' [E]
L4	N 20°14'05" E	25.00'	
L5	N 70°03'37" E	25.00'	
L6	N 01°07'55" E	25.00'	
L7	N 01°14'05" E	25.00'	
L8	N 01°14'05" E	74.69'	
L9	S 88°57'05" E	74.71'	
L10	N 01°39'05" W	36.55'	

