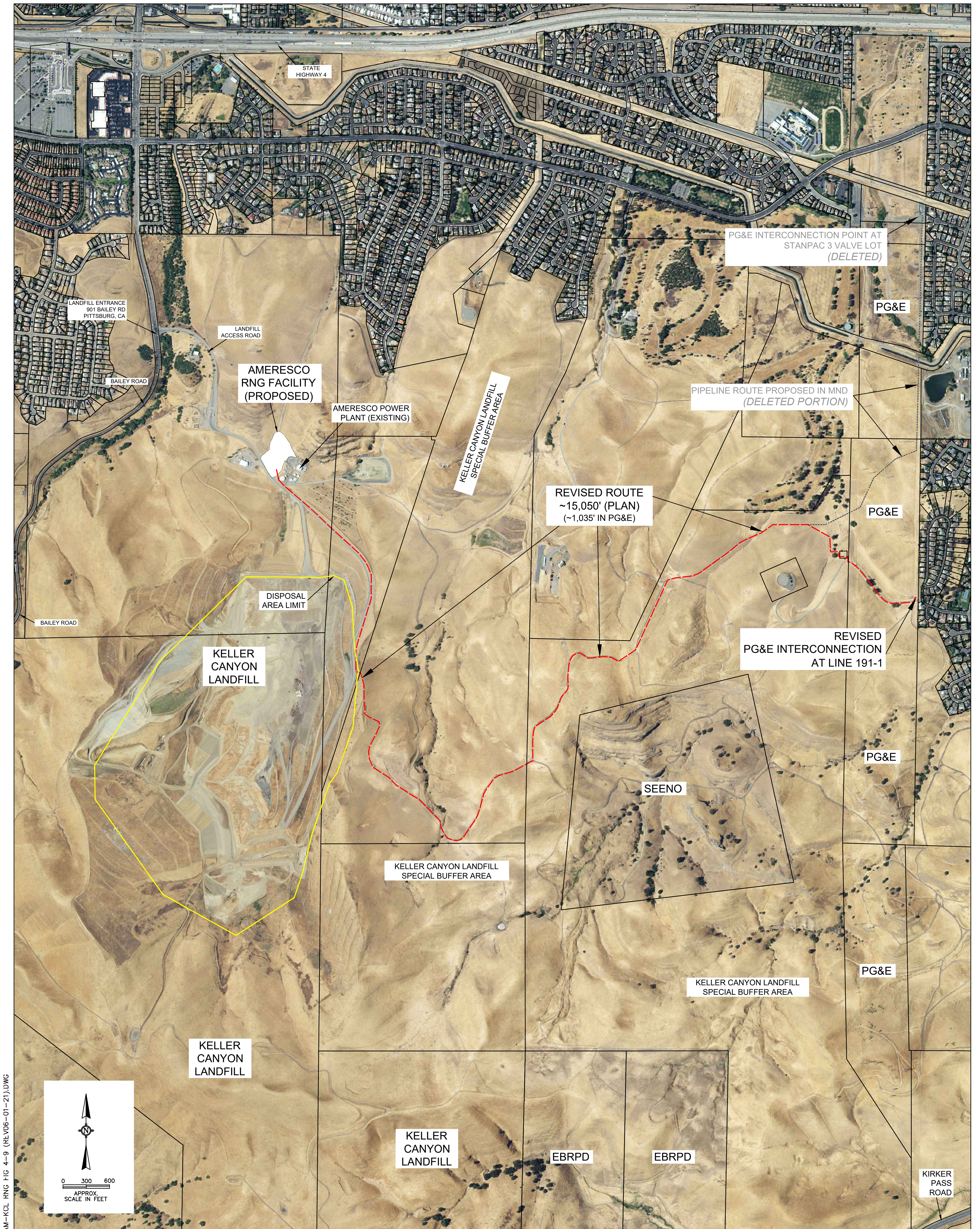


ATTACHMENT 4

PROJECT PLANS



AM-KCL-RNG-FIG 4-9 (REV08-01-21).DWG

2018 AERIAL PHOTO FROM TERRAIN NAVIGATOR PRO (TRIMBLE, INC.)
 PROPERTY BOUNDARIES FROM CONTRA COSTA COUNTY GIS

PERMIT DRAWING - NOT FOR CONSTRUCTION
 LENGTHS, AREAS, AND PROPERTY LINE LOCATIONS ARE APPROXIMATE

**FIGURE 4 - PROJECT AREA
 (REVISED)**

RECEIVED on 06/08/2021 **CDLP18-02022**
 By Contra Costa County
 Department of Conservation and Development

C:\Land Projects\2006\Amresco Keller Canyon\dwg\2021 Figures\Final MND\Am-KCL RNG Fig 5 (rev06-01-21).dwg

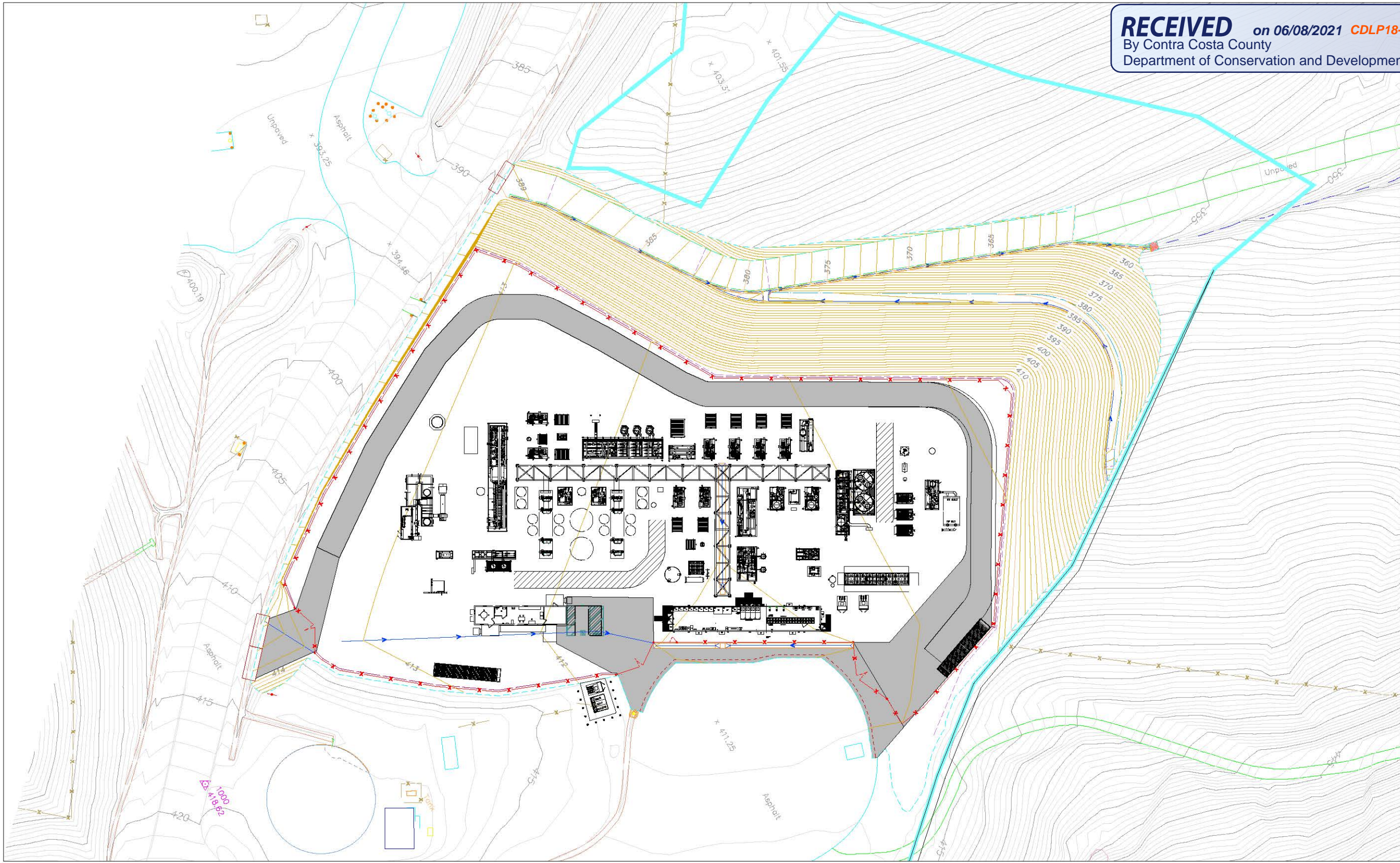
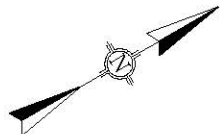


FIGURE 5
RNG PROCESSING FACILITY SITE PLAN (REVISED)

0 30 60
 APPROX.
 SCALE IN FEET



BRYAN A. STIRRAT & ASSOCIATES
 3748 MT. DIABLO BLVD #300
 LAFAYETTE, CA 94549
 909-655-3271



AMERESCO KELLER CANYON
 RENEWABLE NATURAL GAS PROJECT
 CONTRA COSTA COUNTY LP18-2022 / SCH 2020100267

DATE:	01 JUNE 2021
DRAWN BY:	EBT
REVIEW BY:	AS / JAS
REV:	2021-1/ATSI 01-27-2021

RECEIVED on 06/08/2021 **CDLP18-02022**
 By Contra Costa County
 Department of Conservation and Development

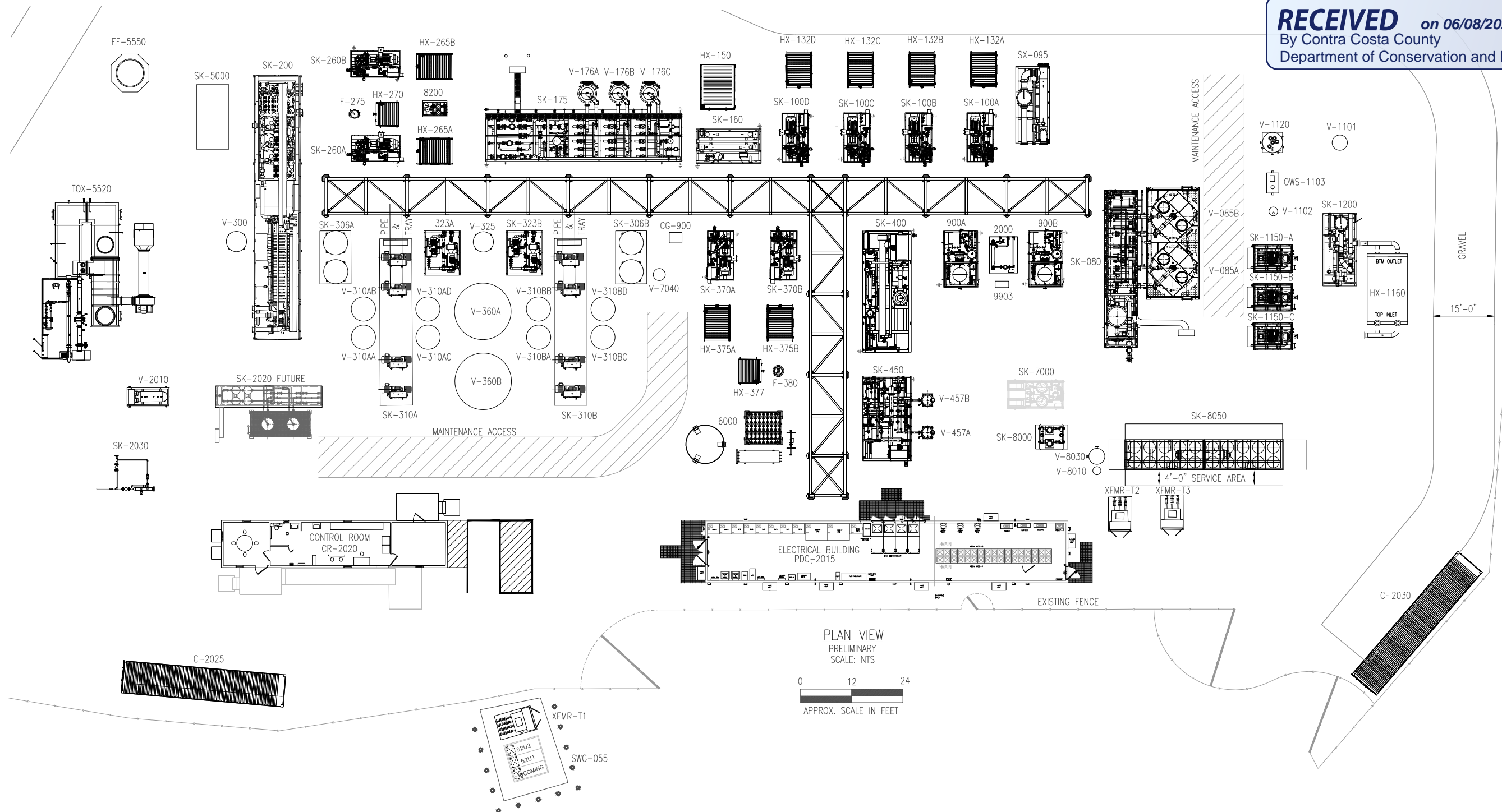
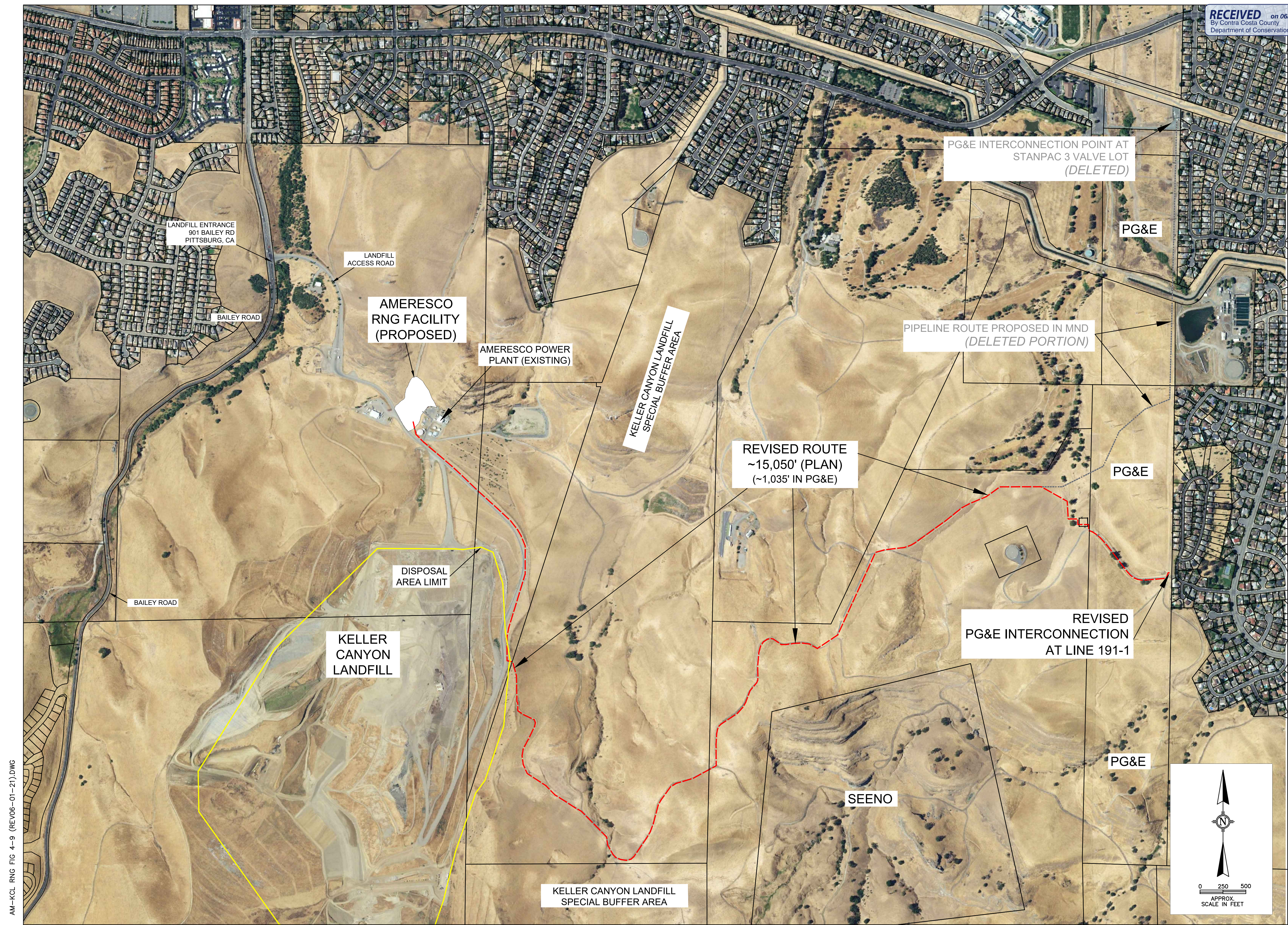


FIGURE 6
RNG PROCESSING FACILITY GENERAL ARRANGEMENT (REVISED)

EQUIP TAG	EQUIPMENT NAME	EQUIP TAG	EQUIPMENT NAME	EQUIP TAG	EQUIPMENT NAME	EQUIP TAG	EQUIPMENT NAME	EQUIP TAG	EQUIPMENT NAME
SK-080	DESULFUR VALVE SKID	SK-260A	RECIRCULATION COMPRESSOR A SKID	SK-323A	NRU REGENERATION SKID	V-1102	CONDENSATE VESSEL	SK-7000	COMPRESSED AIR SKID
V-085A	DESULFUR MEDIA VESSEL A	SK-260B	RECIRCULATION COMPRESSOR B SKID	SK-323B	NRU REGENERATION SKID	OWS-1103	OIL WATER SEPARATOR	V-7040	VERTICAL DRY RECEIVER
V-085B	DESULFUR MEDIA VESSEL B	HX-265A	RECIRC COMPRESSOR A OIL AMBIENT COOLER	V-325	VENT VESSEL	V-1120	CONDENSATE SUMP	SK-8000	CHILLED PUMP SKID
SK-095	FEED COMPRESSOR INLET DEHYDRATION SKID	HX-265B	RECIRC COMPRESSOR B OIL AMBIENT COOLER	V-360A	PRODUCT VESSEL	SK-1150-A	FEED BLOWER SKID	V-8010	CHILLED WATER EXPANSION TANK
SK-100A	FEED COMPRESSOR A SKID	HX-270	RECIRC COMPRESSOR AFTER COOLER	V-360B	PRODUCT VESSEL	SK-1150-B	FEED BLOWER SKID	V-8030	CHILLED THERMAL STORAGE TANK
SK-100B	FEED COMPRESSOR B SKID	F-275	2ND STAGE FILTER	SK-370A	2ND STAGE COMPRESSOR A SKID	SK-1150-C	FEED BLOWER SKID	SK-8050	CHILLER UNIT - CHILLED WATER SYSTEM
SK-100C	FEED COMPRESSOR C SKID	V-300	NRU HIGH PRESSURE RECEIVER	SK-370B	2ND STAGE COMPRESSOR B SKID	HX-1160	RAW GAS AMBIENT COOLER	V-9903	USED OIL STORAGE TANK
SK-100D	FEED COMPRESSOR D SKID	SK-306A	NRU DRYER SKID A	HX-375A	2ND STAGE A OIL AMBIENT COOLER	SK-1200	RAW GAS DEHYDRATION SKID	SK-8200	HOT GLYCOL SKID
HX-132A	FEED A AMBIENT OIL COOLER	SK-306B	NRU DRYER SKID A	HX-375B	2ND STAGE B OIL AMBIENT COOLER	SK-2000	R21 PRETREATMENT SKID	SK-5000	FLARE VALVE SKID
HX-132B	FEED B AMBIENT OIL COOLER	SK-310A	NRU PSA VALVING SKID A	HX-377	AMBIENT COOLER	V-2010	ODORIZER	XFMR-T1	MAIN 3000 Kva TRANSFORMER T1
HX-132C	FEED C AMBIENT OIL COOLER	SK-310B	NRU PSA VALVING SKID B	F-380	2ND STAGE FILTER	PDC-2015	POWER DISTRIBUTION CENTER	XFMR-T2	AUX TRANSFORMER T2
HX-132D	FEED D AMBIENT OIL COOLER	V-310AA	ABSORPTION MEDIA VESSEL AA	SK-400	DEOXO SKID	CR-2020	OFFICE & CONTROL ROOM	XFMR-T3	AUX TRANSFORMER T3
HX-150	FEED COMPRESSOR GAS AMBIENT COOLER	V-310AB	ABSORPTION MEDIA VESSEL AB	SK-450	TSA DRYER	SK-2020	FUTURE R21 FILTER	SWG-055	SWITCH GEAR
SK-160	FEED COMPRESSOR DEHYDRATION SKID	V-310AC	ABSORPTION MEDIA VESSEL AC	V-457A	TSA ABSORPTION MEDIA VESSEL A	C-2025	CONEX		
SK-175	TSA SILOXANE REMOVAL SKID	V-310AD	ABSORPTION MEDIA VESSEL AD	V-457B	TSA ABSORPTION MEDIA VESSEL B	C-2030	CONEX		
V-176A	TSA SILOXANE MEDIA VESSEL A	V-310BA	ABSORPTION MEDIA VESSEL BA	CG-900	GAS CHROMATOGRAPH	SK-2030	PIG LAUNCHER		
V-176B	TSA SILOXANE MEDIA VESSEL B	V-310BB	ABSORPTION MEDIA VESSEL BB	SK-900A	3RD STAGE COMPRESSOR A SKID	TOX-5520	THERMAL OXIDIZER		
V-176C	TSA SILOXANE MEDIA VESSEL C	V-310BC	ABSORPTION MEDIA VESSEL BC	SK-900B	3RD STAGE COMPRESSOR B SKID	EF-5550	ENCLOSED FLARE		
SK-200	CO2 MEMBRANE SYSTEM (DMT CONTAINER)	V-310BD	ABSORPTION MEDIA VESSEL BD	V-1101	RAW GAS SEPARATOR	6000	LIQUID NITROGEN AREA		



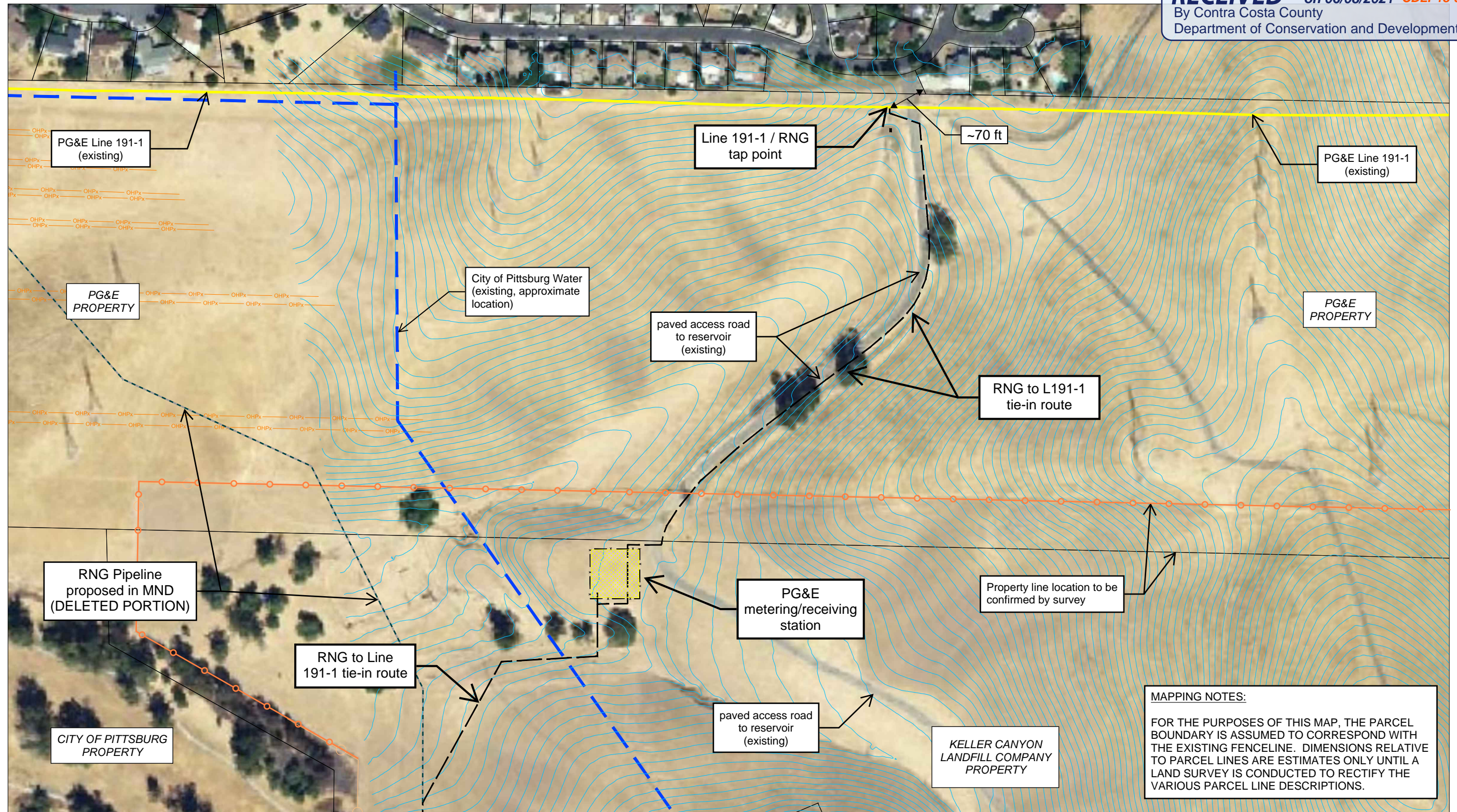
AM-KCL RNG FIG 4-9 (REV06-01-21).DWG

2018 AERIAL PHOTO FROM TERRAIN NAVIGATOR PRO (TRIMBLE, INC.)
 PROPERTY BOUNDARIES FROM CONTRA COSTA COUNTY GIS

LENGTHS, AREAS, AND PROPERTY LINE LOCATIONS ARE APPROXIMATE

FIGURE 9 - PIPELINE PLAN (REVISED)

C:\Land Projects 2006\Ameresco Keller Canyon\dwg\pipeline\Ameresco RNG Alt Pipe Routes - Rev3 (04-28-2021).dwg



MAPPING NOTES:
 FOR THE PURPOSES OF THIS MAP, THE PARCEL BOUNDARY IS ASSUMED TO CORRESPOND WITH THE EXISTING FENCELINE. DIMENSIONS RELATIVE TO PARCEL LINES ARE ESTIMATES ONLY UNTIL A LAND SURVEY IS CONDUCTED TO RECTIFY THE VARIOUS PARCEL LINE DESCRIPTIONS.

FIGURE 10 - PIPELINE IN PG&E PROPERTY (REVISED)

PROPERTY LINES FROM CONTRA COSTA COUNTY GIS - CONFIRM BY SURVEY PRIOR TO CONSTRUCTION.
 AERIAL PHOTO FROM TRIMBLE NAVIGATION, INC.
 TOPOGRAPHY FROM LIDAR PROCESSED BY TETRA TECH