

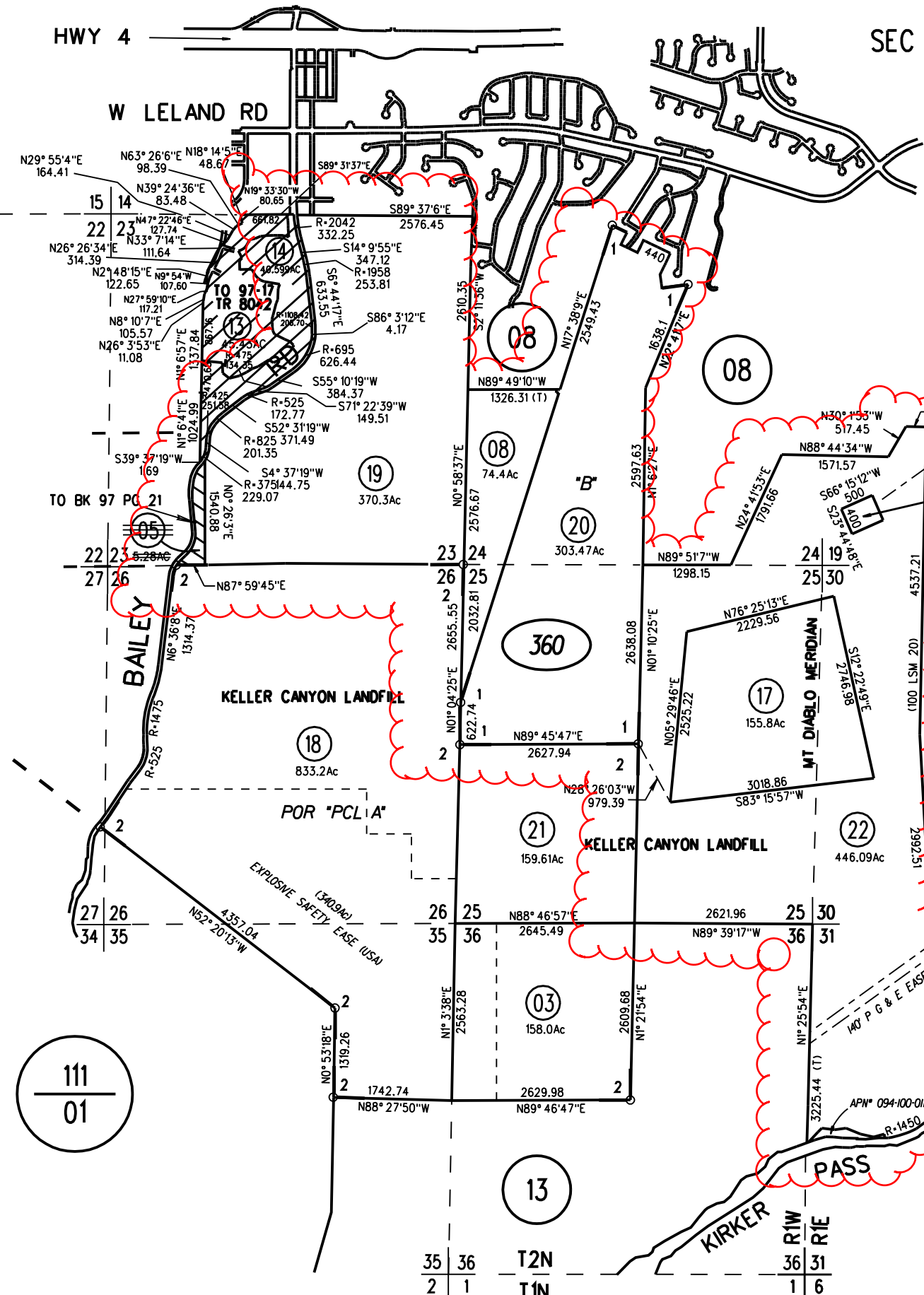
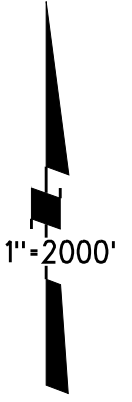
ATTACHMENT 3

PARCEL PAGE, GENERAL PLAN MAP, ZONING MAP

SEC 25 & POR SEC 23,24,26,35,36 T2N R1W &
POR SEC 19,30,31 T1N R1E MDB&M
1- POR 32PM42 3/18/1974
2- POR 155PM44 11/22/1991

16 | 15
21 | 22

97
17



AMERESCO RINGPGP SITE,
Part 1 of 2

111
01

13

75
08

360

22
6/2/09

NOTE: THIS MAP WAS PREPARED FOR ASSESSMENT PURPOSES ONLY. NO LIABILITY IS ASSUMED FOR THE ACCURACY OF THE INFORMATION DELINEATED HEREON. ASSESSOR'S PARCELS MAY NOT COMPLY WITH LOCAL LOT SPLIT OR BUILDING SITE ORDINANCES.

35 | 36 T2N
2 | 1 T1N

R1W
36 | R1E
1 | 6

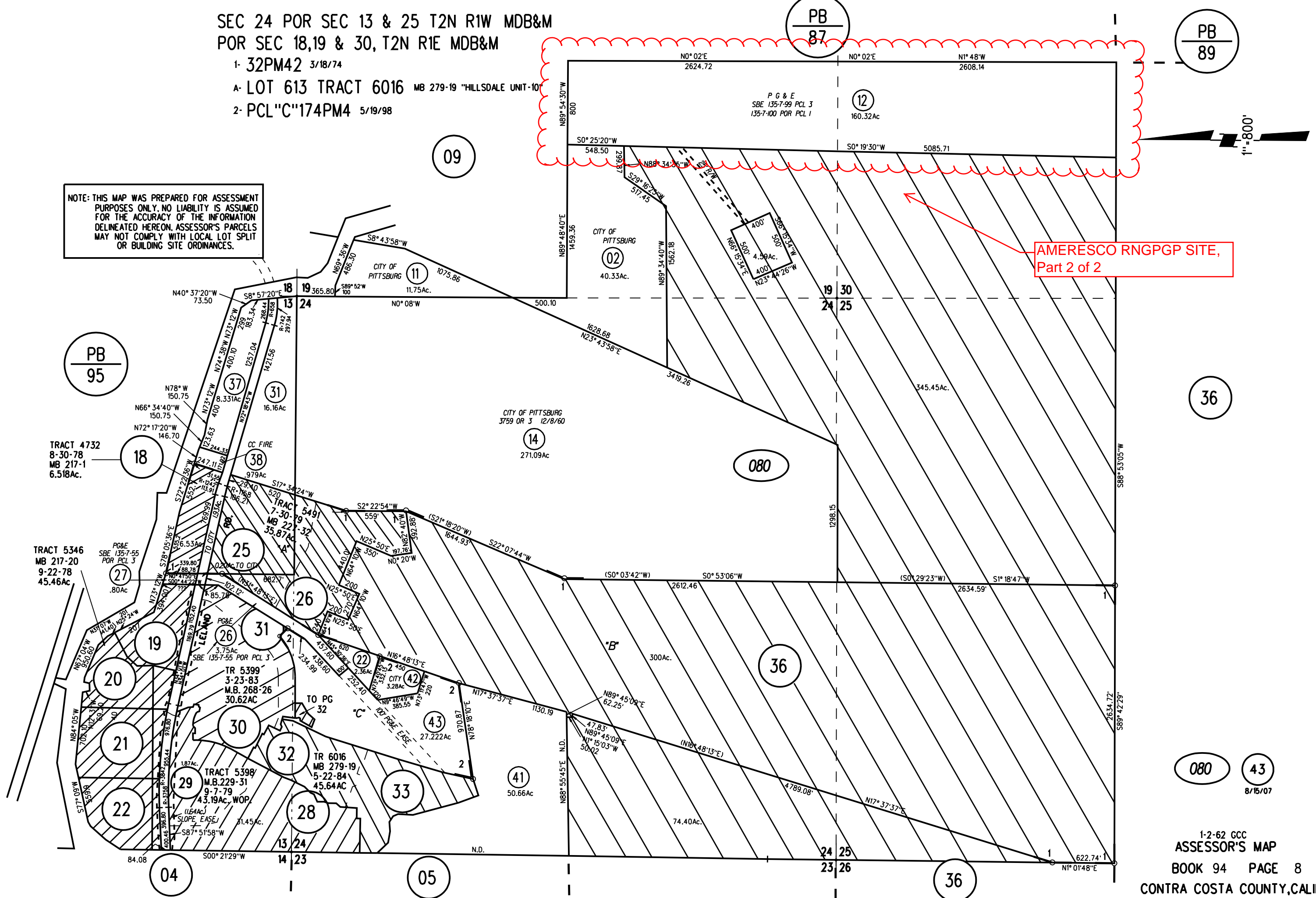
SEC 24 POR SEC 13 & 25 T2N R1W MDB&M
 POR SEC 18,19 & 30, T2N R1E MDB&M

1- 32PM42 3/18/74

A- LOT 613 TRACT 6016 MB 279-19 "HILLSDALE UNIT-10"

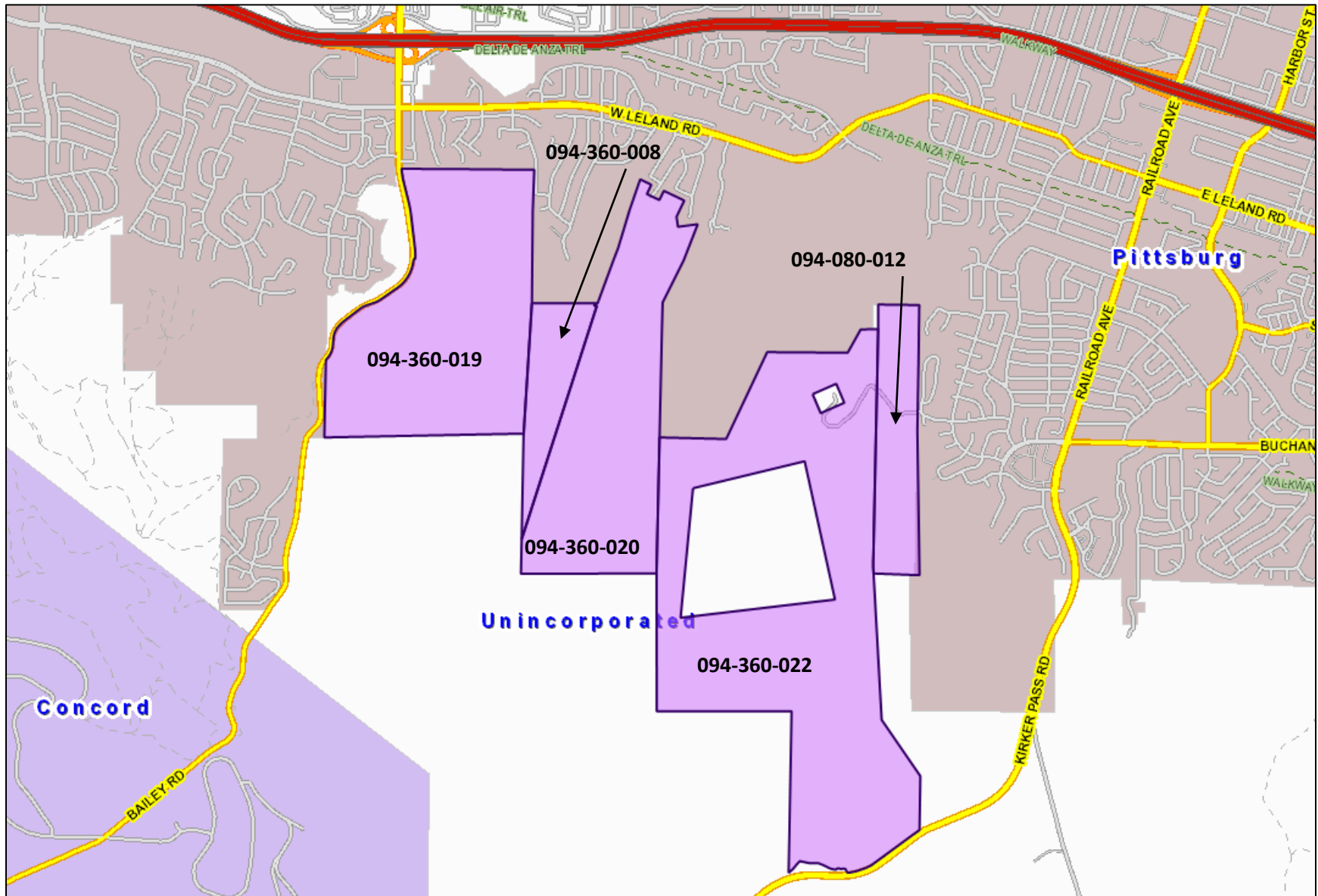
2- PCL"C"174PM4 5/19/98

NOTE: THIS MAP WAS PREPARED FOR ASSESSMENT PURPOSES ONLY. NO LIABILITY IS ASSUMED FOR THE ACCURACY OF THE INFORMATION DELINEATED HEREON. ASSESSOR'S PARCELS MAY NOT COMPLY WITH LOCAL LOT SPLIT OR BUILDING SITE ORDINANCES.



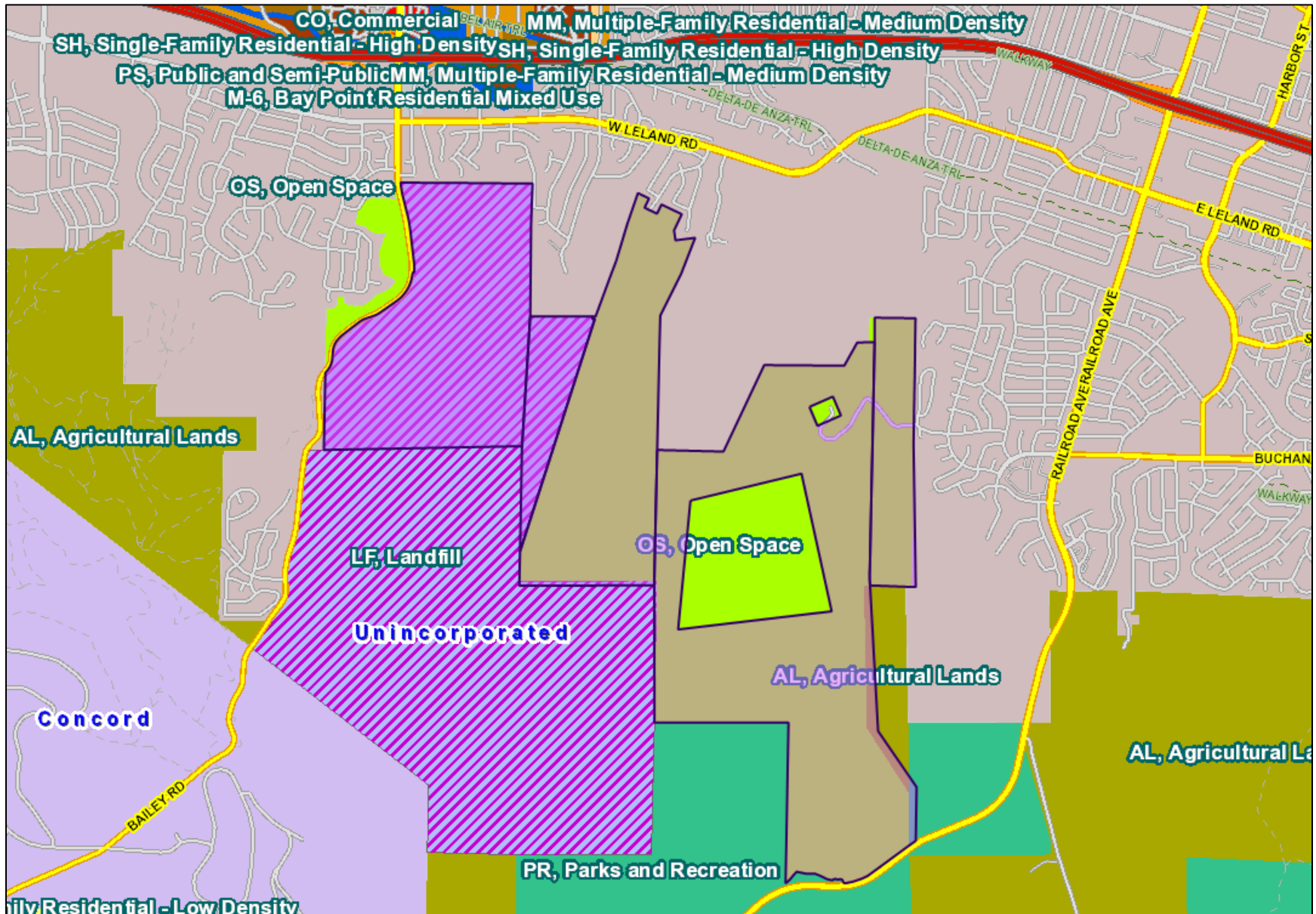
AMERESCO RINGP SITE, Part 2 of 2





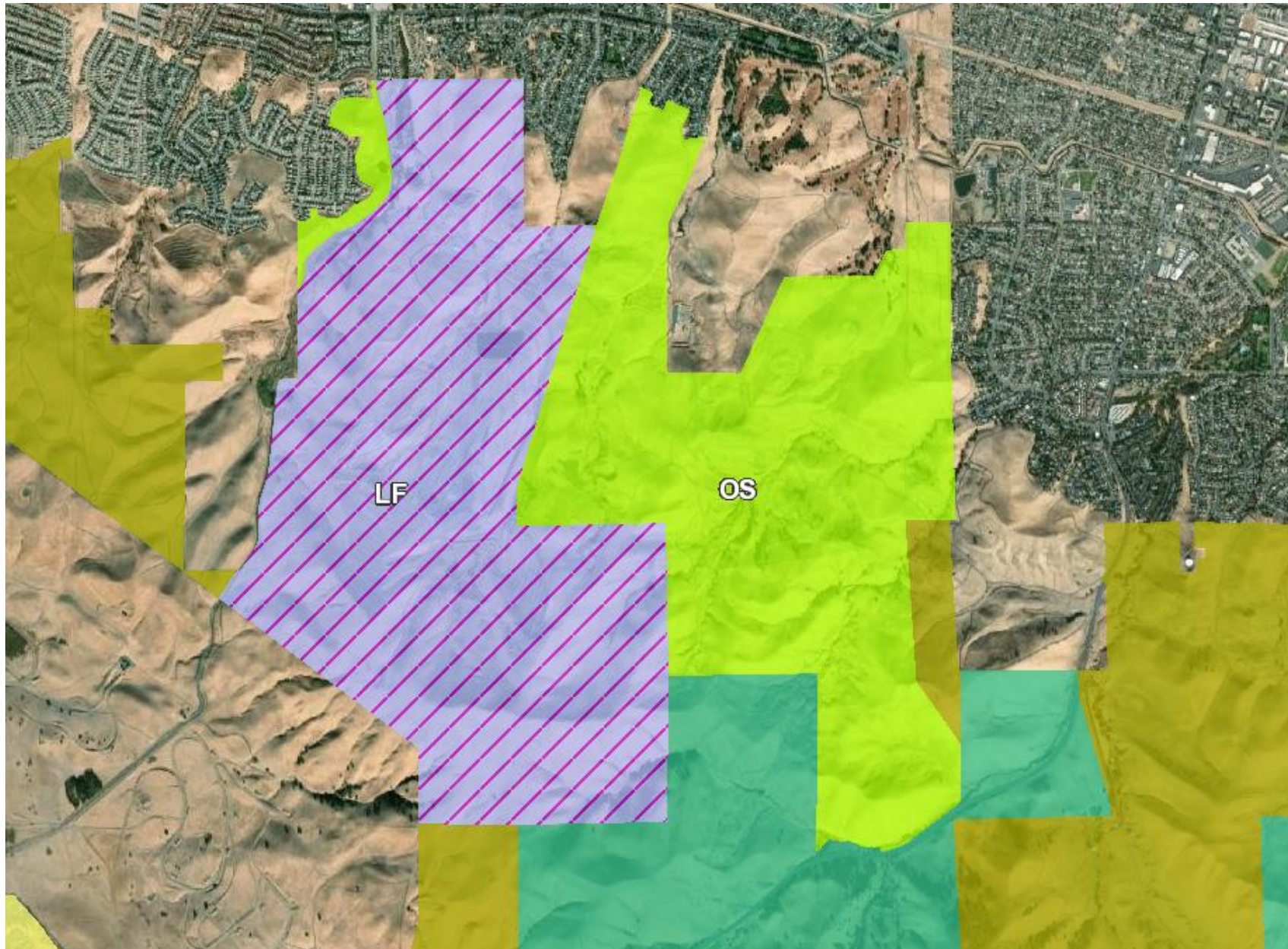
CDLP18-02022 Project Site: APN 094-360-019, 094-360-008, 094-360-020, 094-360-022, 094-080-012

Source: Accela, accessed July 24, 2018

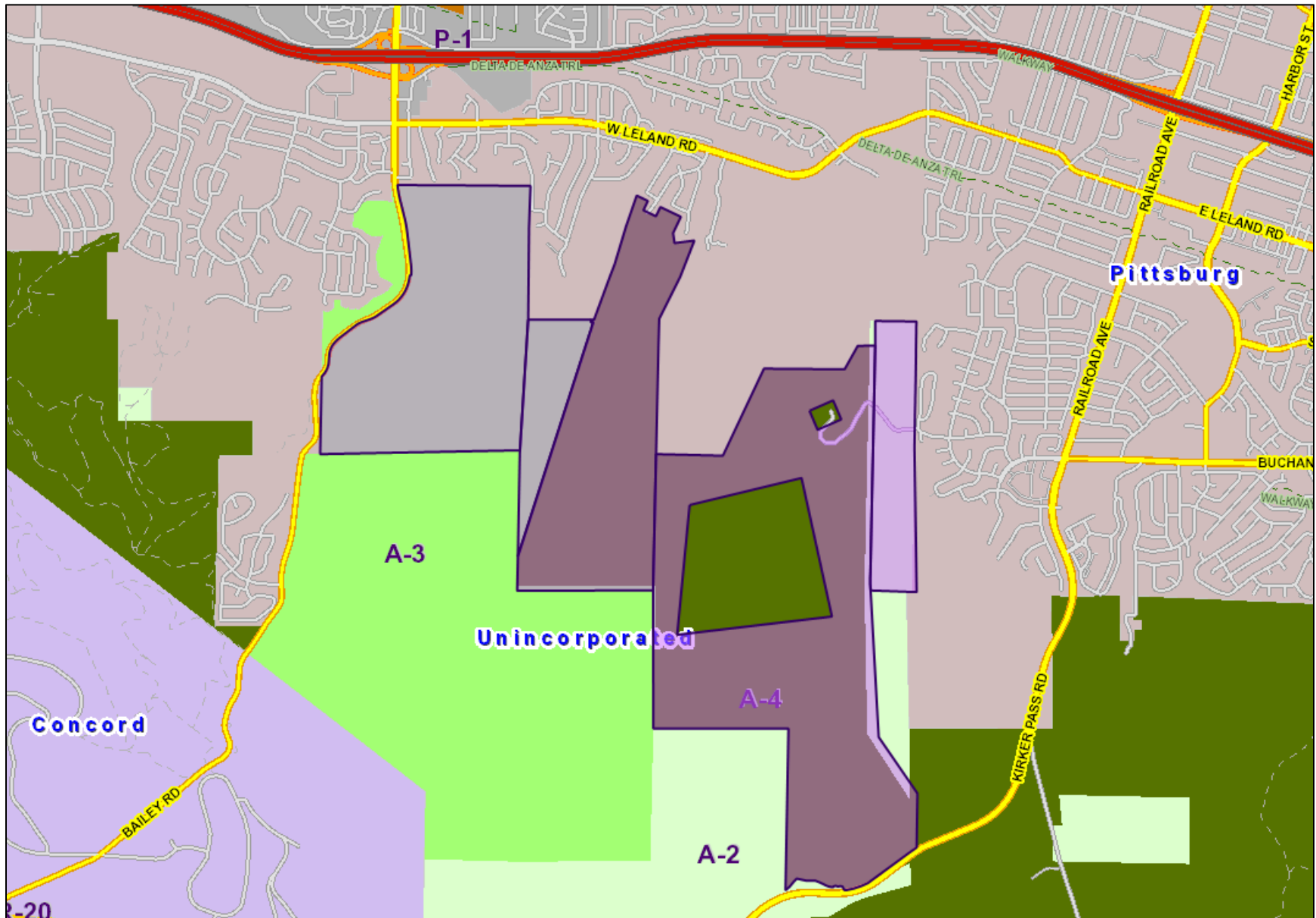


CDLPLP18-02022 General Plan: LF, Landfill – APN 094-360-019, 094-360-008; OS, Open Space – APN 094-360-020, 094-360-022, 094-080-012

Source: Accela, accessed July 24, 2018



CDLP18-02022 General Plan Land Use Designations: LF, Landfill; OS, Open Space
Source: Accela, accessed July 14, 2020



CDLP18-02022 Zoning: A-3, Heavy Agricultural – APN 094-360-019, 094-360-008; A-4, Agricultural Preserve – APN 094-360-020, 094-360-022; A-2, General Agricultural – APN 094-080-012

Source: Accela, accessed July 24, 2018



CDLP18-02022 Zoning: A-3, Heavy Agricultural; A-4, Agricultural Preserve; A-2, General Agricultural
Source: Accela, accessed July 14, 2020