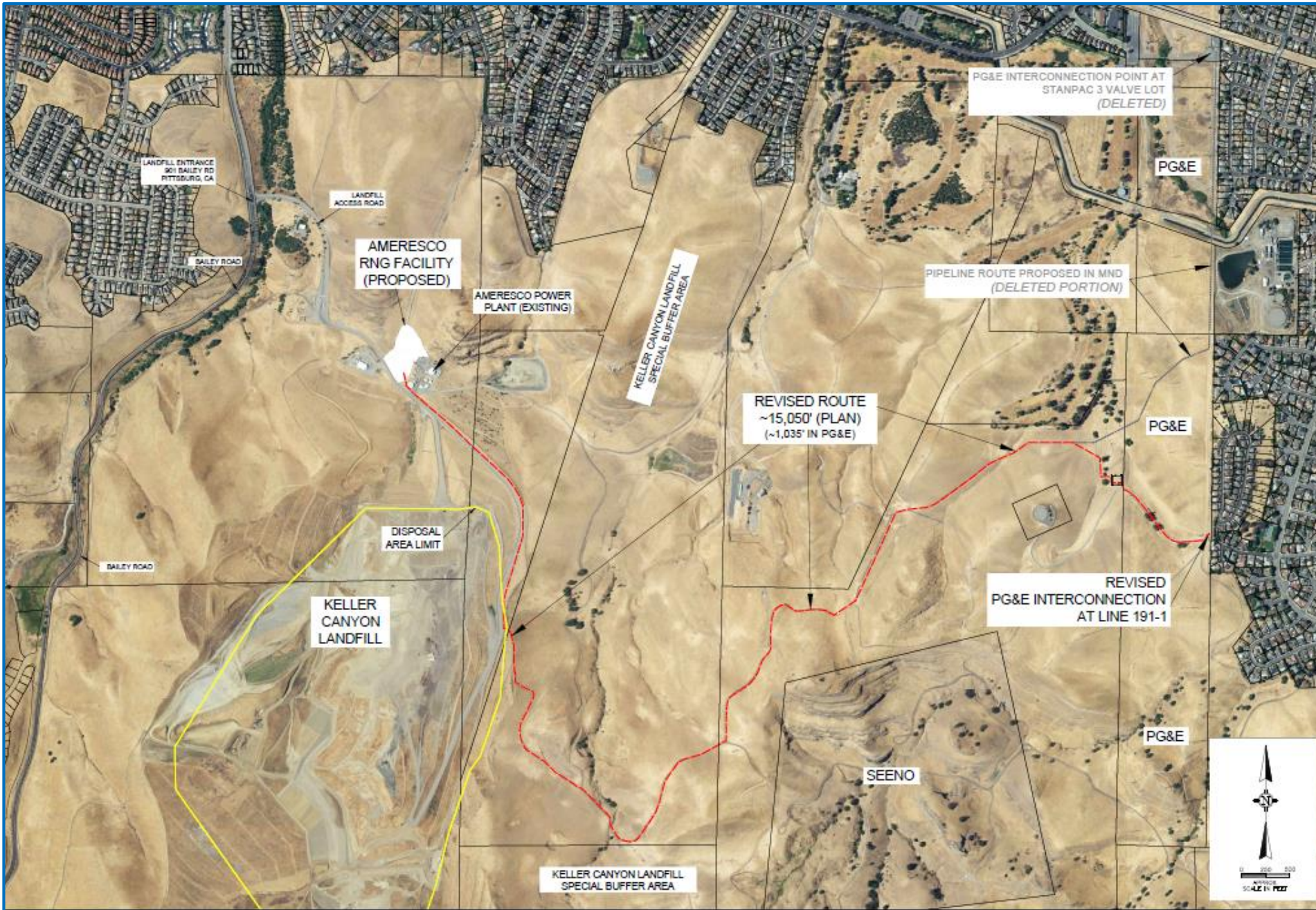


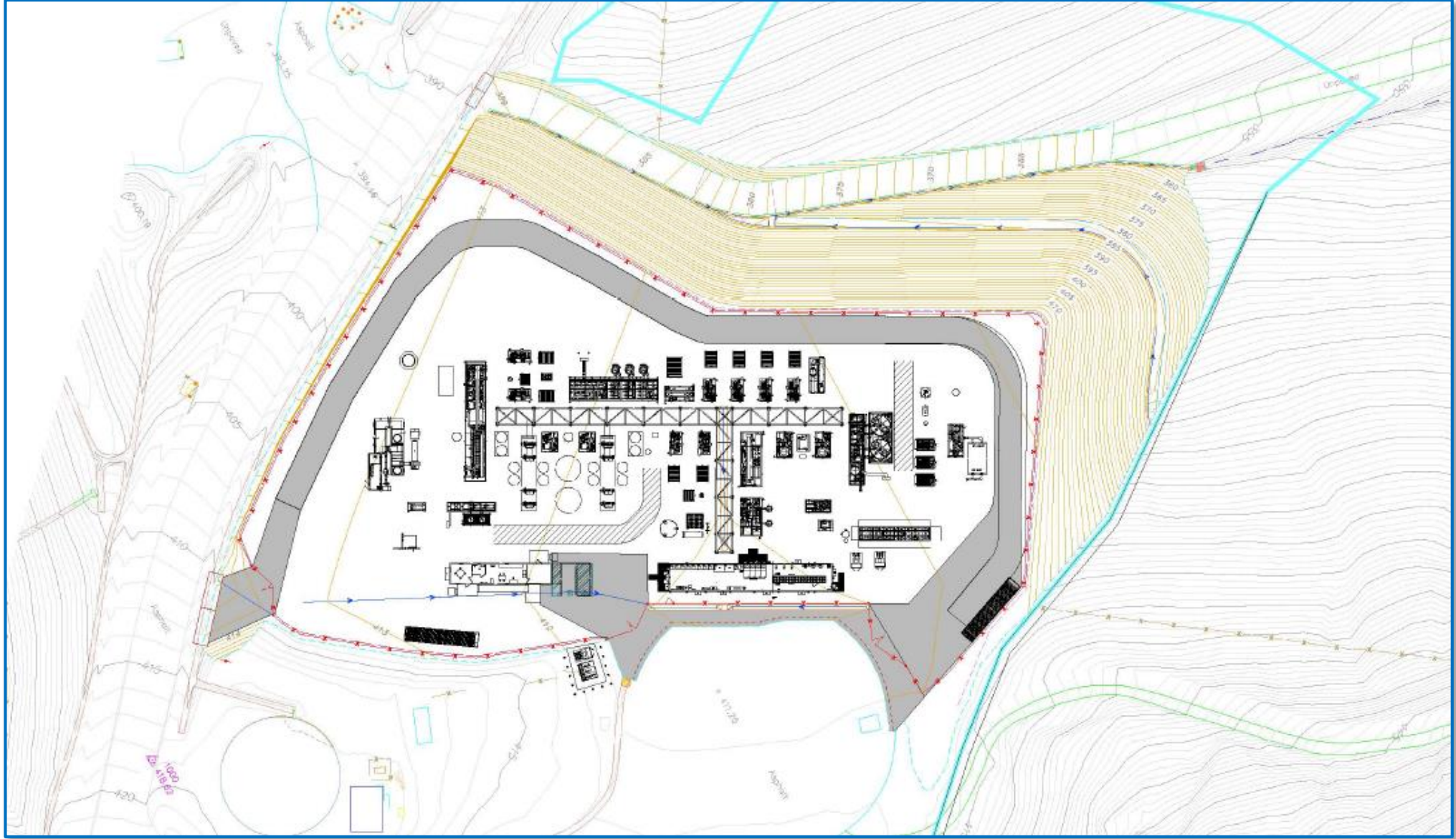


**CDLP18-02022
Ameresco
Keller Canyon
RNGPFP**

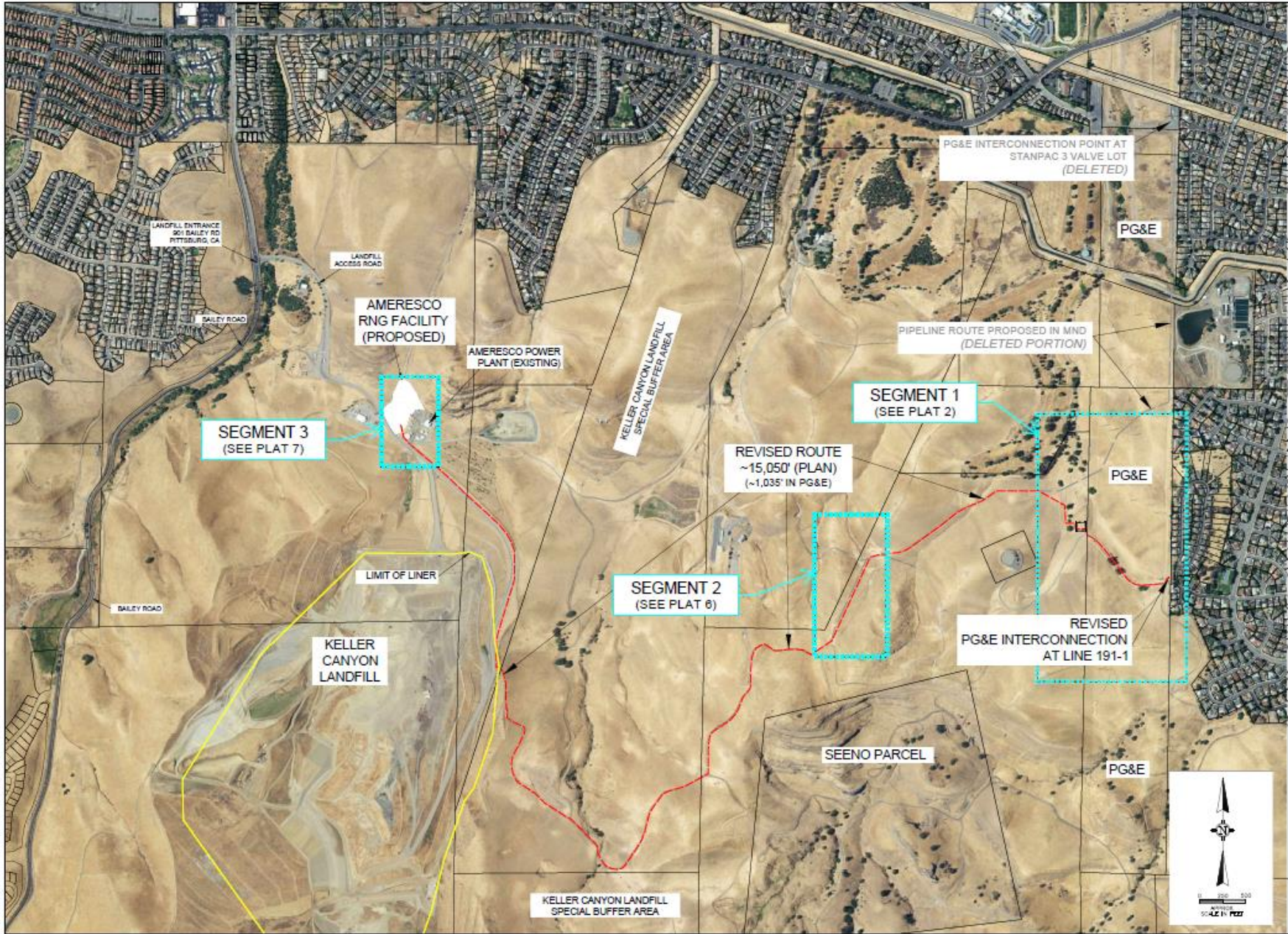
**Board of Supervisors
July 13, 2021**



Map of Ameresco RNGPF and Underground RNG Pipeline

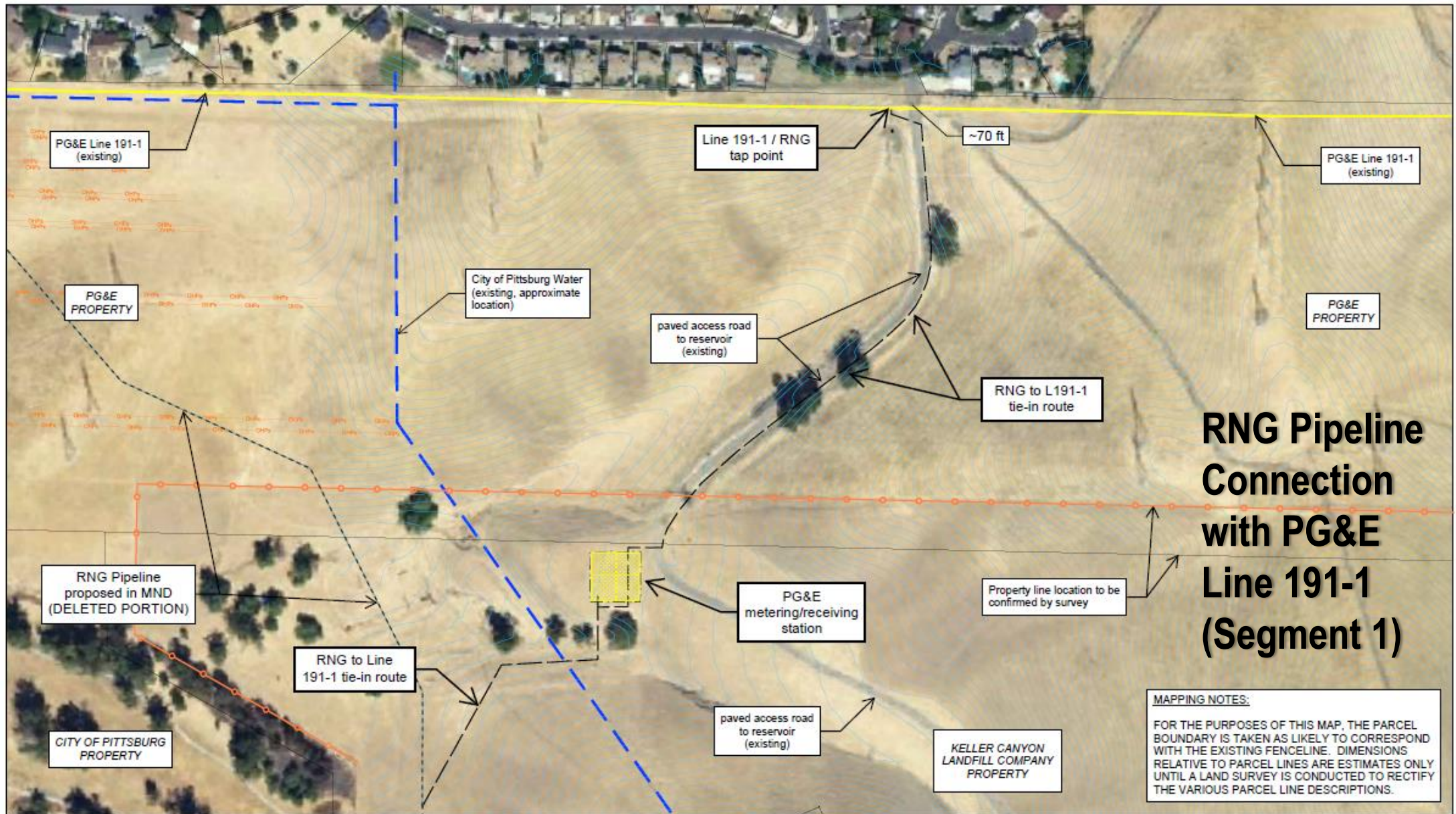


RNG Processing Facility Site Plan



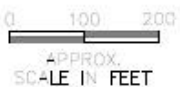
PLAT 1 (REVISED FROM MND FIGURE 9)
REVISED PIPELINE PLAN

Three Pipeline Segments Revised

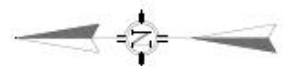


RNG Pipeline Connection with PG&E Line 191-1 (Segment 1)

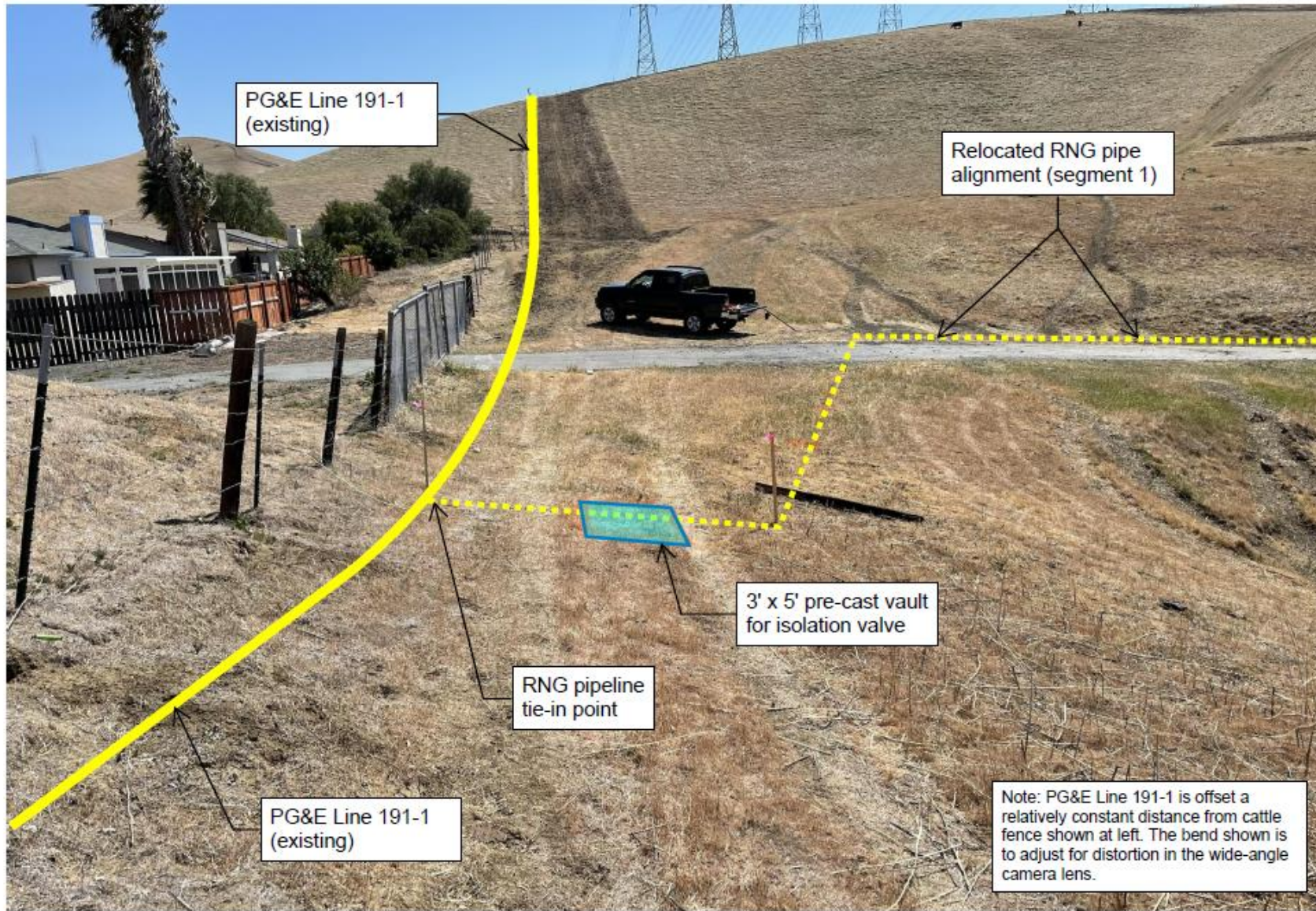
MAPPING NOTES:
 FOR THE PURPOSES OF THIS MAP, THE PARCEL BOUNDARY IS TAKEN AS LIKELY TO CORRESPOND WITH THE EXISTING FENCELINE. DIMENSIONS RELATIVE TO PARCEL LINES ARE ESTIMATES ONLY UNTIL A LAND SURVEY IS CONDUCTED TO RECTIFY THE VARIOUS PARCEL LINE DESCRIPTIONS.



**PLAT 2 - REVISED PIPELINE ROUTE SEGMENT 1
 PG&E METERING STATION & LINE 191-1 TIE IN POINT**

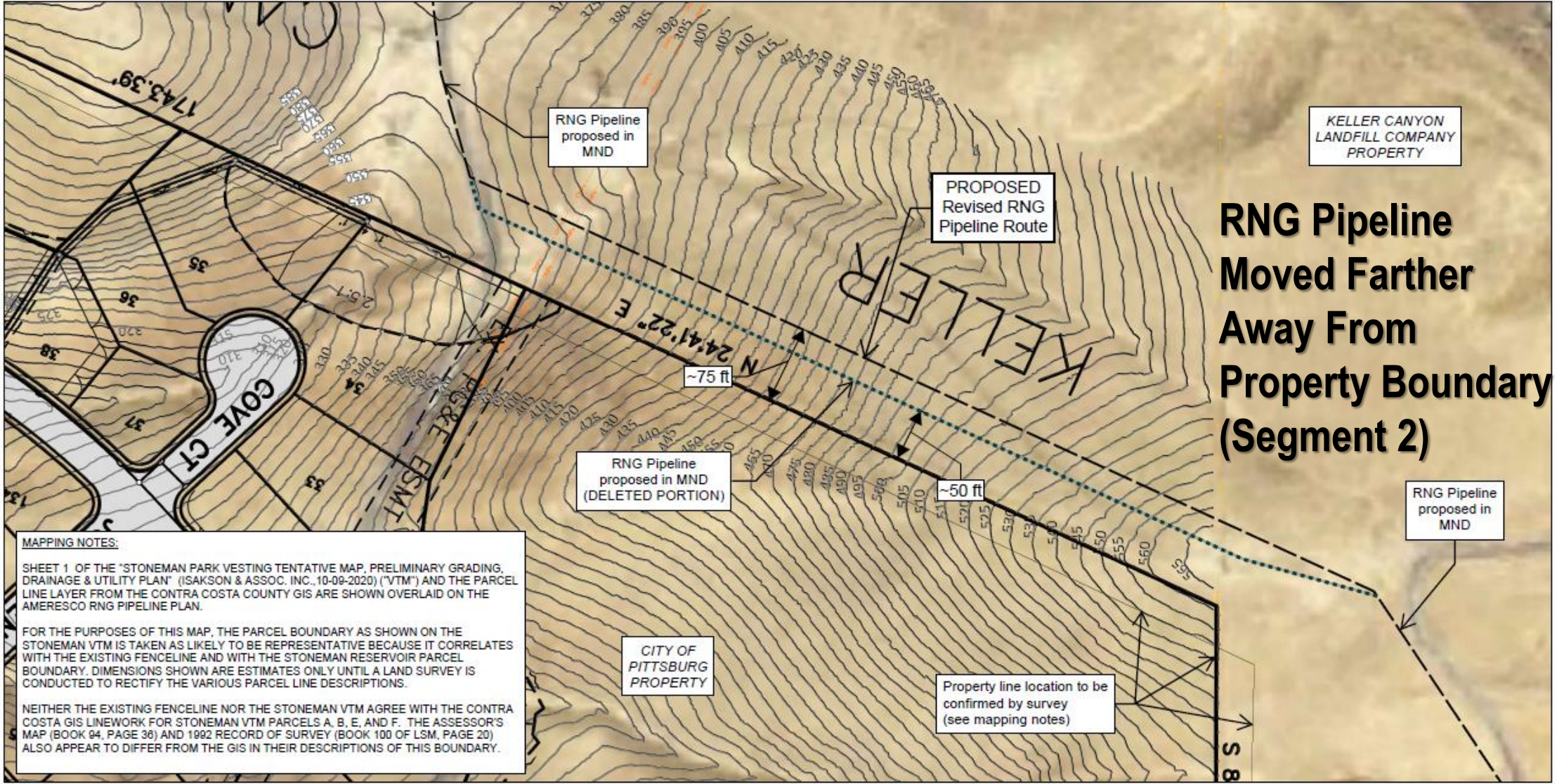


**Tie-In to
PG&E →
Line 191-1
(Segment 1)**



PLAT 5
PROPOSED RNG/PG&E LINE 191-1 TIE IN (LOOKING SOUTH)

E:\Land Projects\2006\444\rescco Keller_City\hwy\kdg\p\hellre\respresso RND 4.1 File Routes - Revd 06-28-2012.dwg



RNG Pipeline Moved Farther Away From Property Boundary (Segment 2)

MAPPING NOTES:

SHEET 1 OF THE "STONEMAN PARK VESTING TENTATIVE MAP, PRELIMINARY GRADING, DRAINAGE & UTILITY PLAN" (ISAKSON & ASSOC. INC., 10-09-2020) ("VTM") AND THE PARCEL LINE LAYER FROM THE CONTRA COSTA COUNTY GIS ARE SHOWN OVERLAID ON THE AMERESCO RNG PIPELINE PLAN.

FOR THE PURPOSES OF THIS MAP, THE PARCEL BOUNDARY AS SHOWN ON THE STONEMAN VTM IS TAKEN AS LIKELY TO BE REPRESENTATIVE BECAUSE IT CORRELATES WITH THE EXISTING FENCELINE AND WITH THE STONEMAN RESERVOIR PARCEL BOUNDARY. DIMENSIONS SHOWN ARE ESTIMATES ONLY UNTIL A LAND SURVEY IS CONDUCTED TO RECTIFY THE VARIOUS PARCEL LINE DESCRIPTIONS.

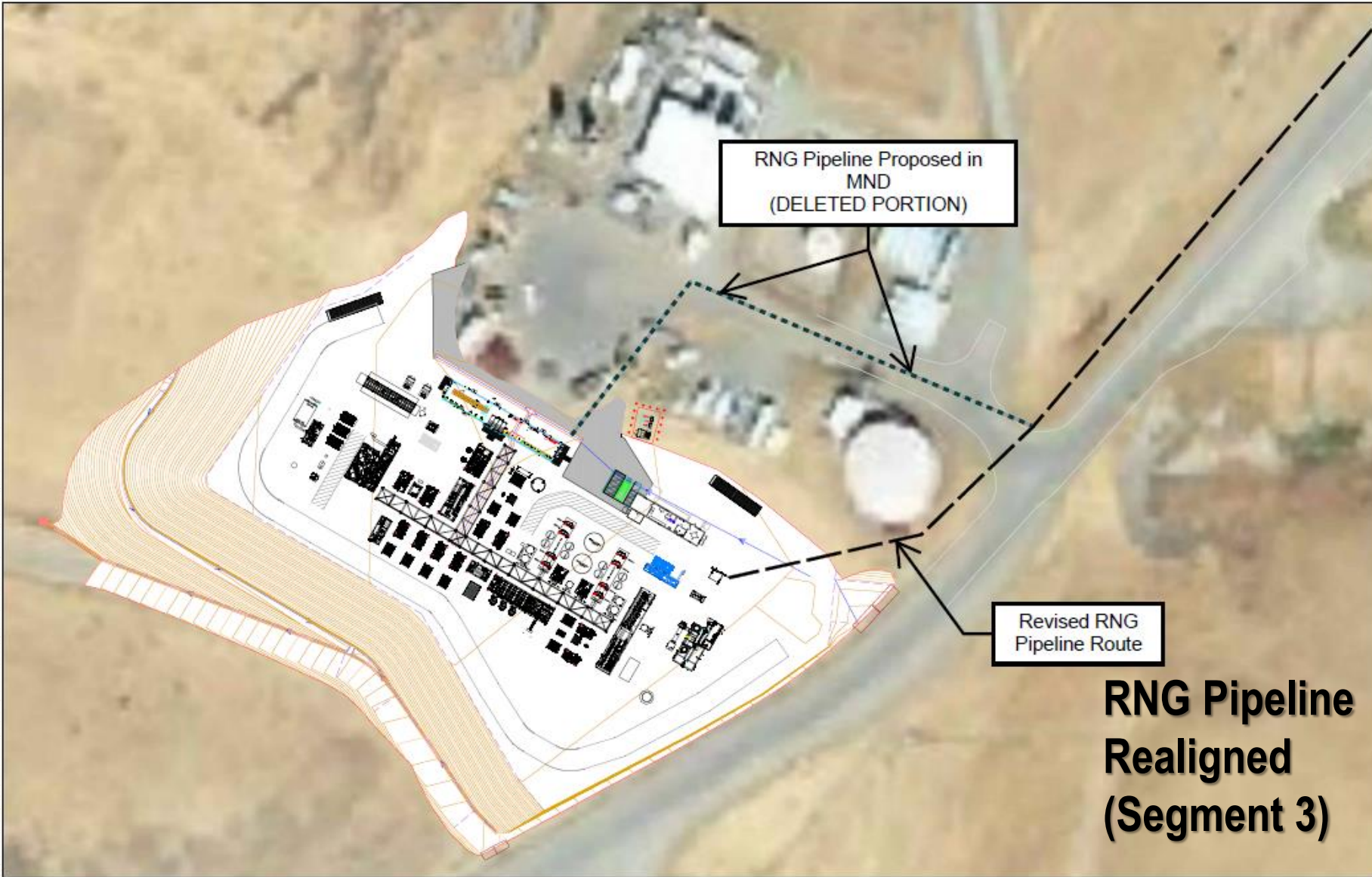
NEITHER THE EXISTING FENCELINE NOR THE STONEMAN VTM AGREE WITH THE CONTRA COSTA GIS LINWORK FOR STONEMAN VTM PARCELS A, B, E, AND F. THE ASSESSOR'S MAP (BOOK 84, PAGE 38) AND 1992 RECORD OF SURVEY (BOOK 100 OF LSM, PAGE 20) ALSO APPEAR TO DIFFER FROM THE GIS IN THEIR DESCRIPTIONS OF THIS BOUNDARY.



**PLAT 6 - REVISED PIPELINE ROUTE SEGMENT 2
ADJACENT TO PROPOSED STONEMAN PARK DEVELOPMENT**



C:\Land Projects\2006\Aneresco Keller Canyon\dwg\pipeline\Aneresco RNG Alt Pipe Routes - Rev4 (04-30-2021).dwg

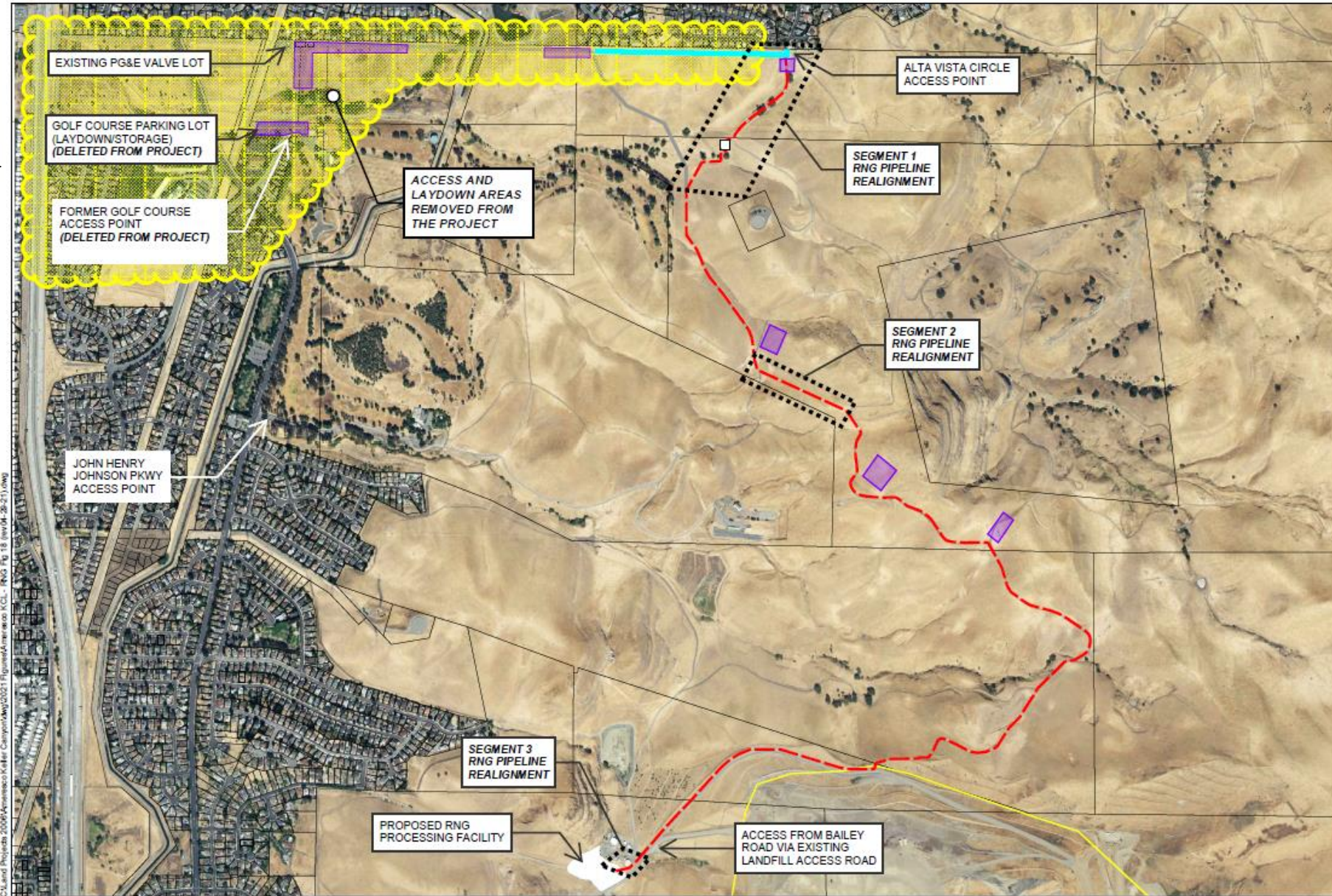


0 50 100
APPROX.
SCALE IN FEET

PLAT 7 - REVISED PIPELINE ROUTE SEGMENT 3
RNG PIPELINE CONNECTION AT PROCESSING FACILITY



Area →
Removed
From
Project



C:\Land Projects\2009\Accesses\Keller Canyon\dwg\2021\Figures\Accesses\KCL - RNG Fig 18 (rev 04-28-21).dwg

0 500 1000
APPROX.
SCALE IN FEET

PLAT 4 (REVISED FROM MND FIGURE 18)
ACCESS AND LAYDOWN AREAS DURING PIPELINE CONSTRUCTION

