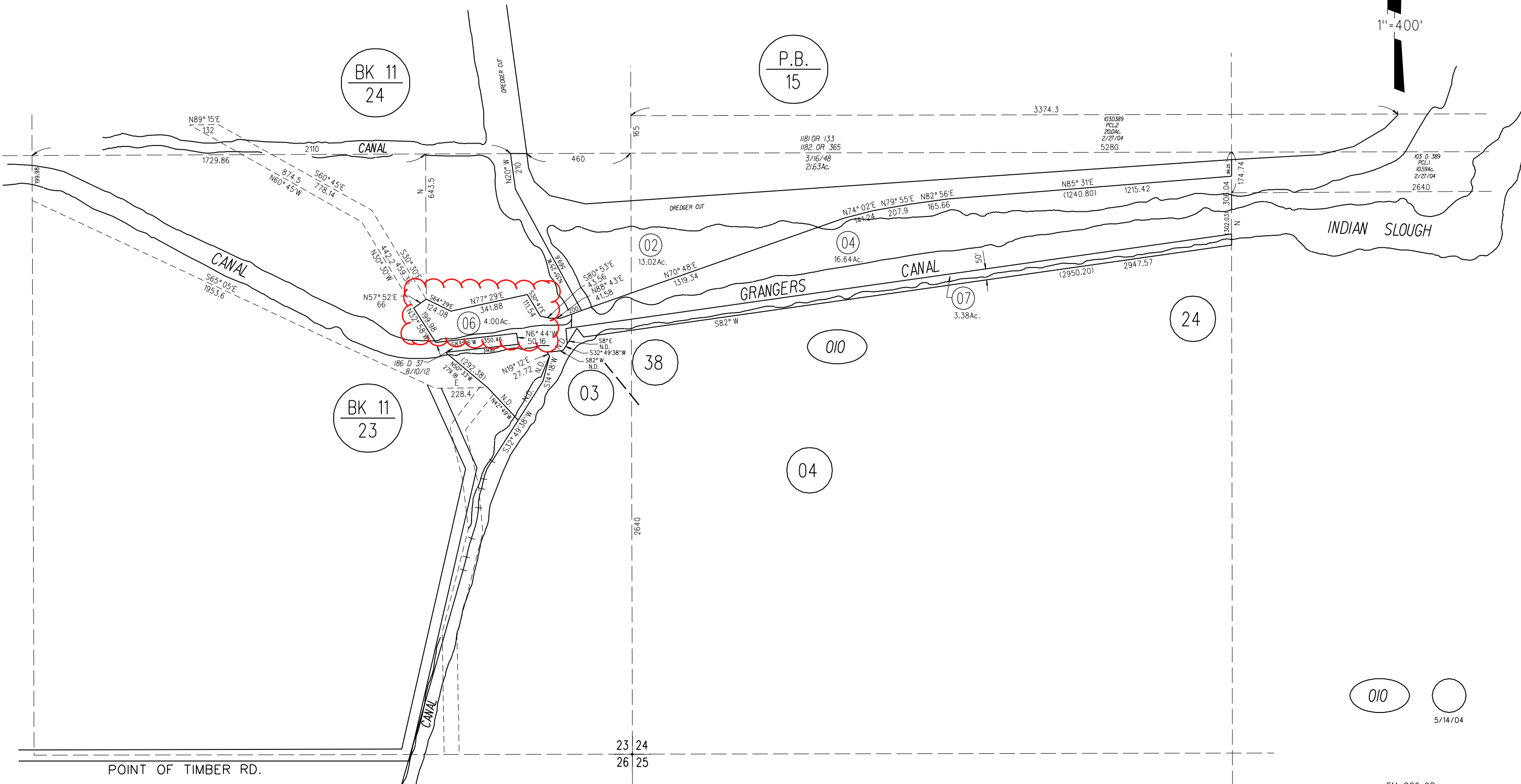


POR. SEC. 23 & 24 T1N R3E M.D.B.&M.

1" = 400'



POINT OF TIMBER RD.

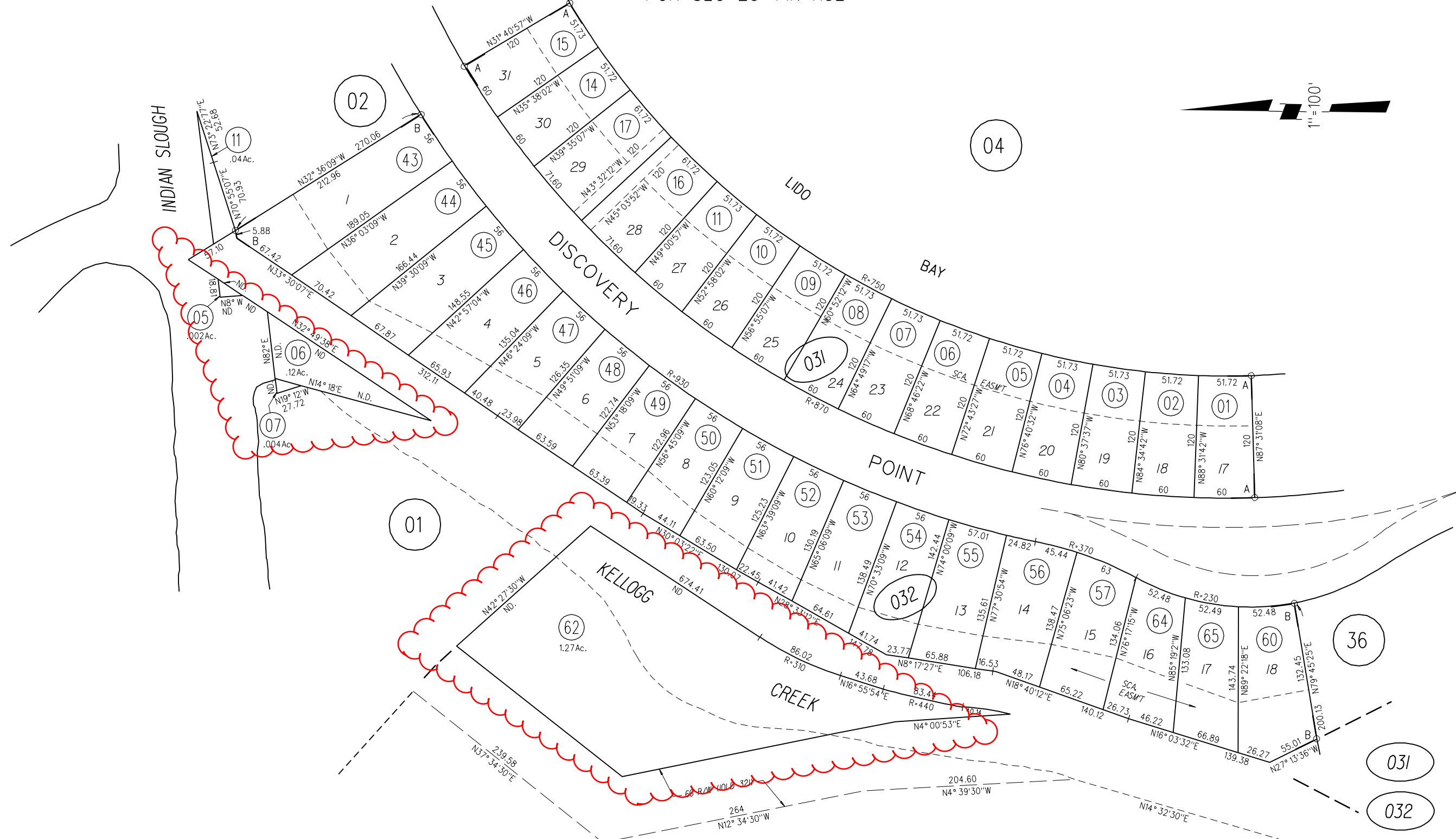
NOTE: THIS MAP WAS PREPARED FOR ASSESSMENT PURPOSES ONLY. NO LIABILITY IS ASSUMED FOR THE ACCURACY OF THE INFORMATION DELINEATED HEREON. ASSESSOR'S PARCELS MAY NOT COMPLY WITH LOCAL LOT SPLIT OR BUILDING SITE ORDINANCES.

010
5/14/04

A-1975 ROLL TRACT 4077 (DISCOVERY BAY NO 3) MB 170-37 AMENDED MAP

B-1981 ROLL TRACT 5811 MB 236-4

POR SEC 23 T1N R3E



NOTE: THIS MAP WAS PREPARED FOR ASSESSMENT PURPOSES ONLY. NO LIABILITY IS ASSUMED FOR THE ACCURACY OF THE INFORMATION DELINEATED HEREON. ASSESSOR'S PARCELS MAY NOT COMPLY WITH LOCAL LOT SPLIT OR BUILDING SITE ORDINANCES.

PB11
P-23

FM 9-37 5-15-89
~~FM 11-29 4-5-71~~
ASSESSOR'S MAP

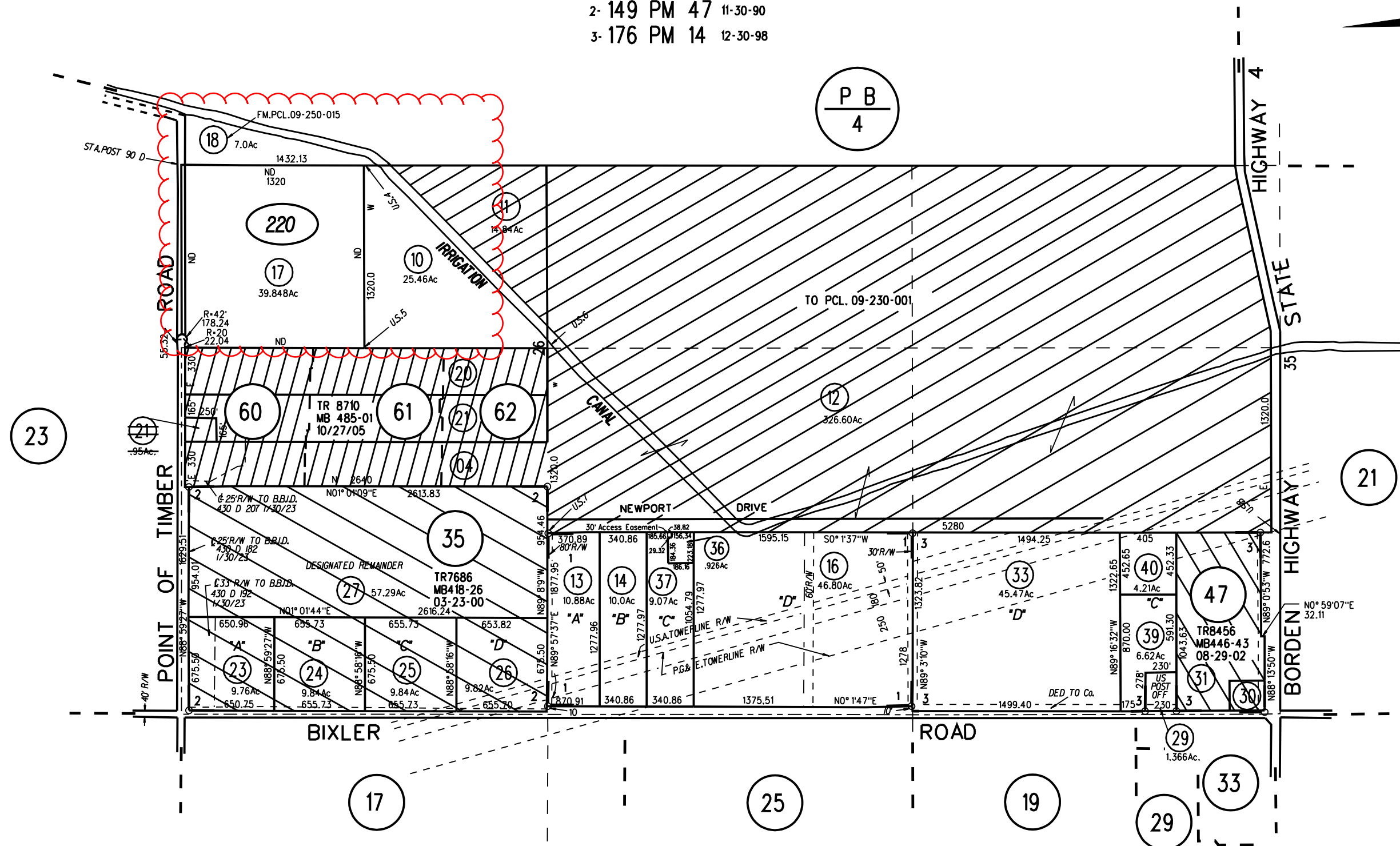
BOOK 4 PAGE 3
CONTRA COSTA COUNTY, CALIF.

AMS 10-21-99

12/09/03

POR SECS 26 & 35 T 1 N R 3 E MD&M

- 1- 24 PM 19 9-20-72
- 2- 149 PM 47 11-30-90
- 3- 176 PM 14 12-30-98



P B
4

23

21

NOTE: THIS MAP WAS PREPARED FOR ASSESSMENT PURPOSES ONLY. NO LIABILITY IS ASSUMED FOR THE ACCURACY OF THE INFORMATION DELINEATED HEREON. ASSESSOR'S PARCELS MAY NOT COMPLY WITH LOCAL LOT SPLIT OR BUILDING SITE ORDINANCES.

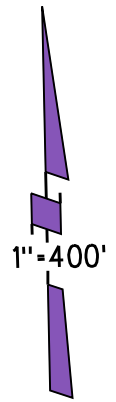
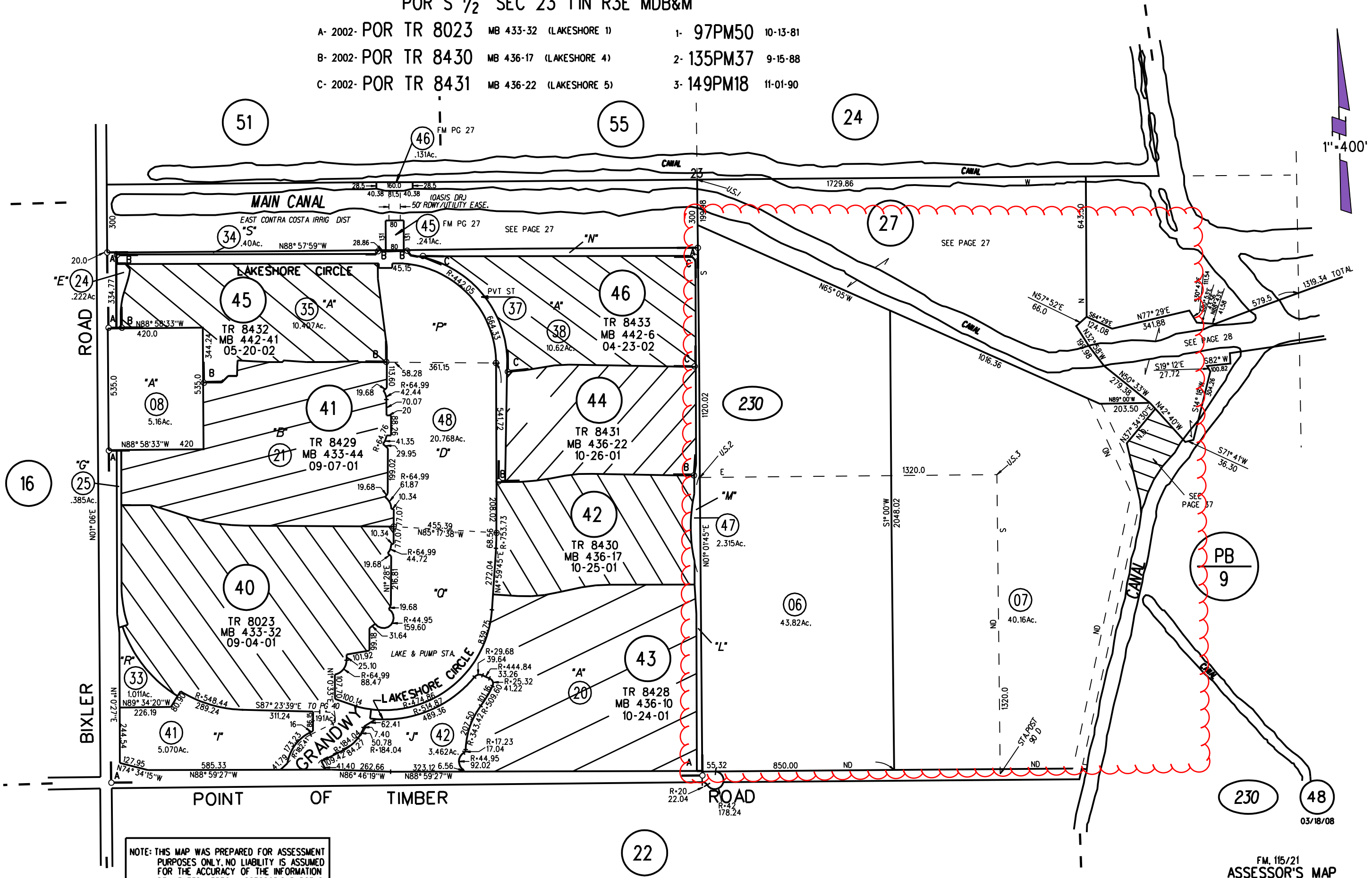
220

39,40

8/13/12

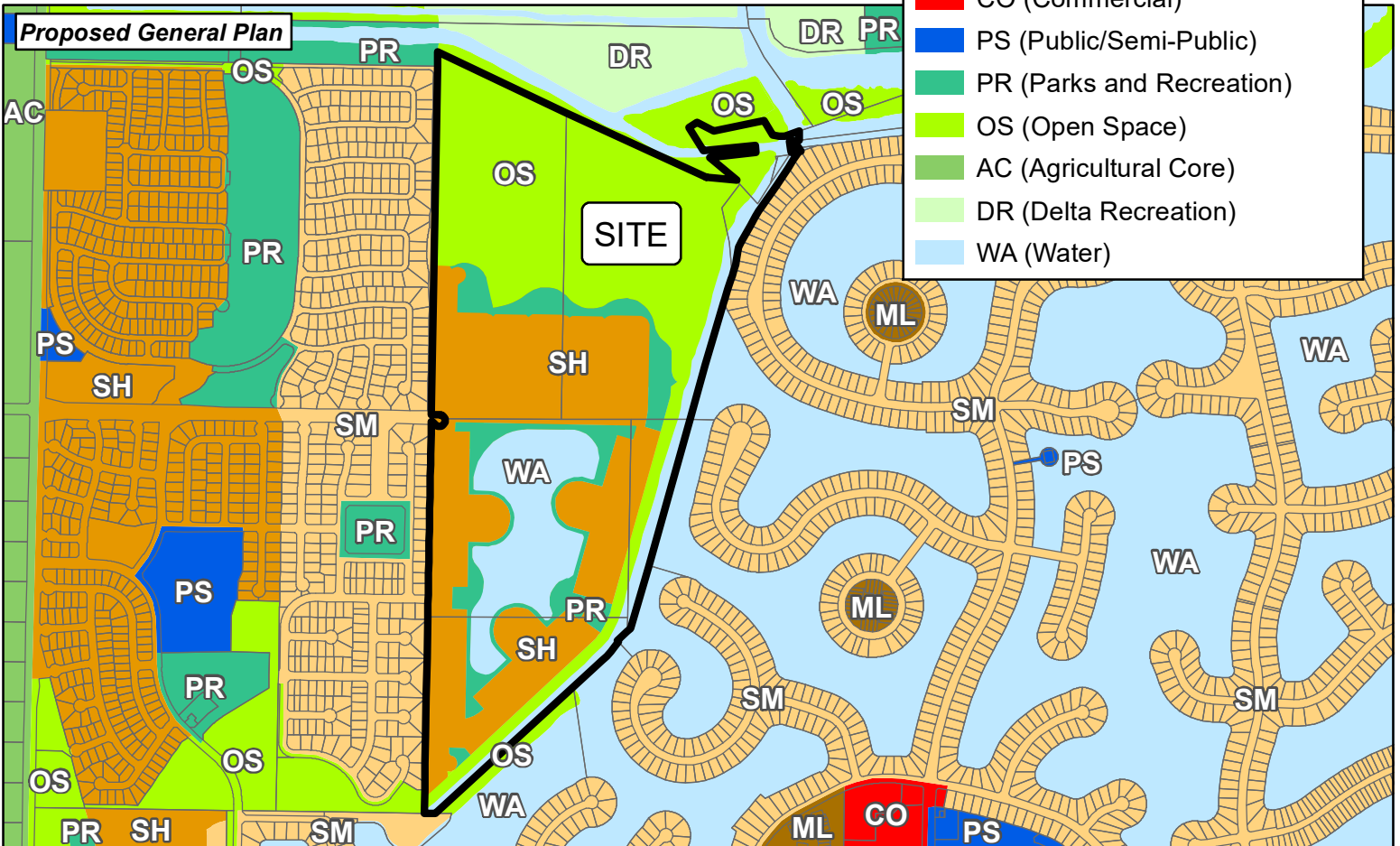
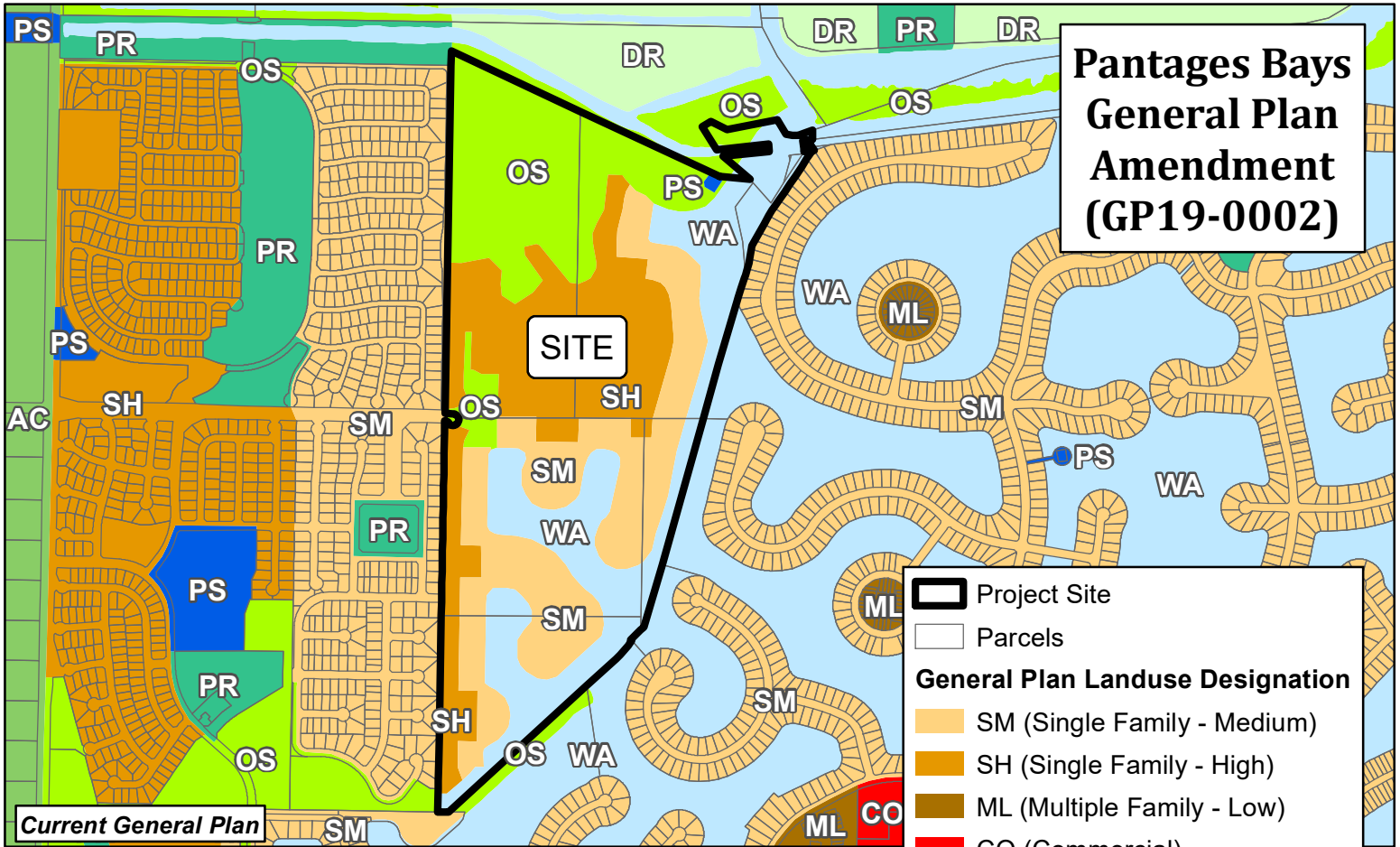
POR S 1/2 SEC 23 T1N R3E MDB&M

A- 2002- POR TR 8023	MB 433-32 (LAKESHORE 1)	1- 97PM50	10-13-81
B- 2002- POR TR 8430	MB 436-17 (LAKESHORE 4)	2- 135PM37	9-15-88
C- 2002- POR TR 8431	MB 436-22 (LAKESHORE 5)	3- 149PM18	11-01-90



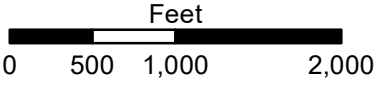
NOTE: THIS MAP WAS PREPARED FOR ASSESSMENT PURPOSES ONLY. NO LIABILITY IS ASSUMED FOR THE ACCURACY OF THE INFORMATION DELINEATED HEREON. ASSESSOR'S PARCELS MAY NOT COMPLY WITH LOCAL LOT SPLIT OR BUILDING SITE ORDINANCES.

Pantages Bays General Plan Amendment (GP19-0002)



Legend

- Project Site
- Parcels
- General Plan Landuse Designation**
- SM (Single Family - Medium)
- SH (Single Family - High)
- ML (Multiple Family - Low)
- CO (Commercial)
- PS (Public/Semi-Public)
- PR (Parks and Recreation)
- OS (Open Space)
- AC (Agricultural Core)
- DR (Delta Recreation)
- WA (Water)

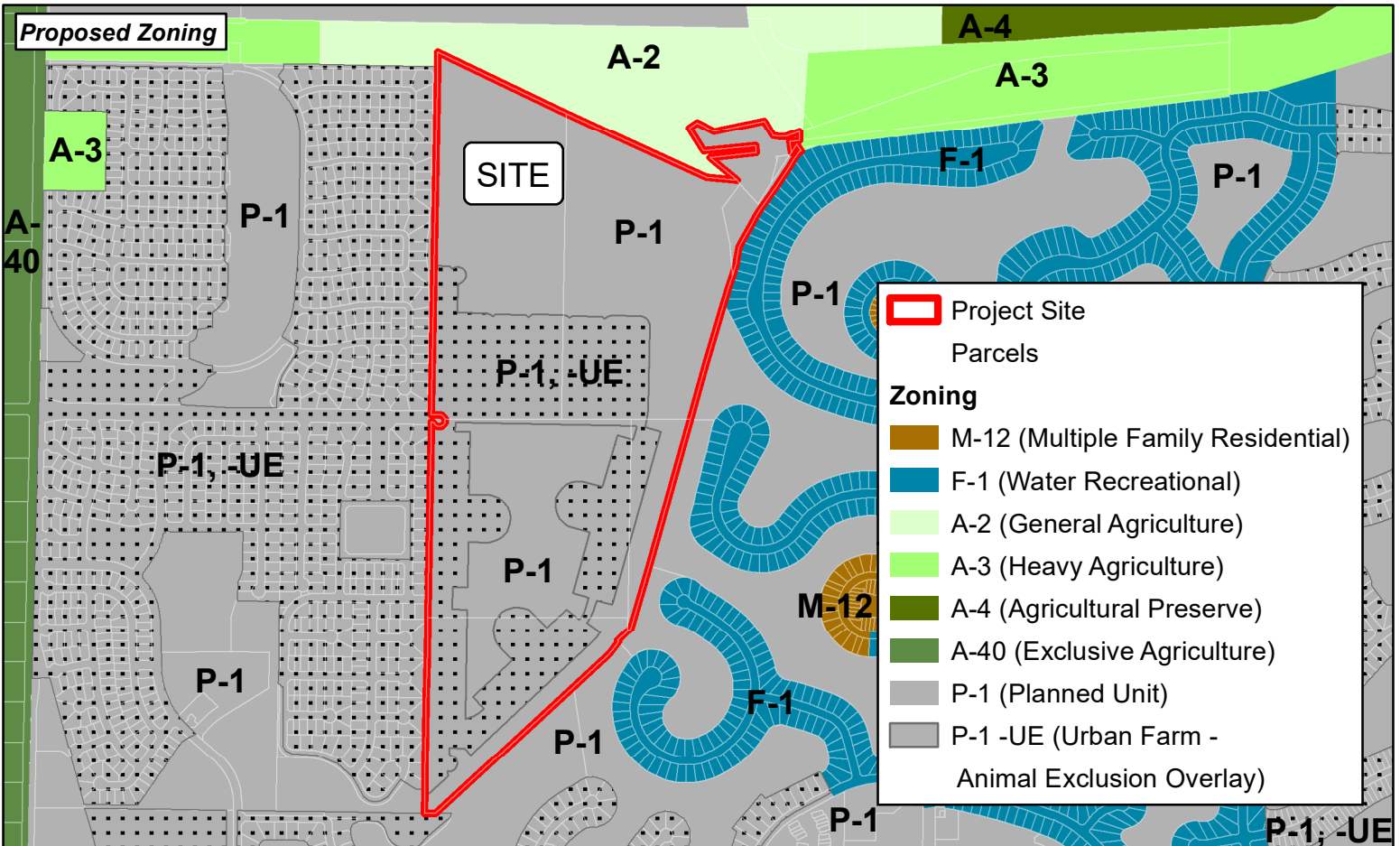
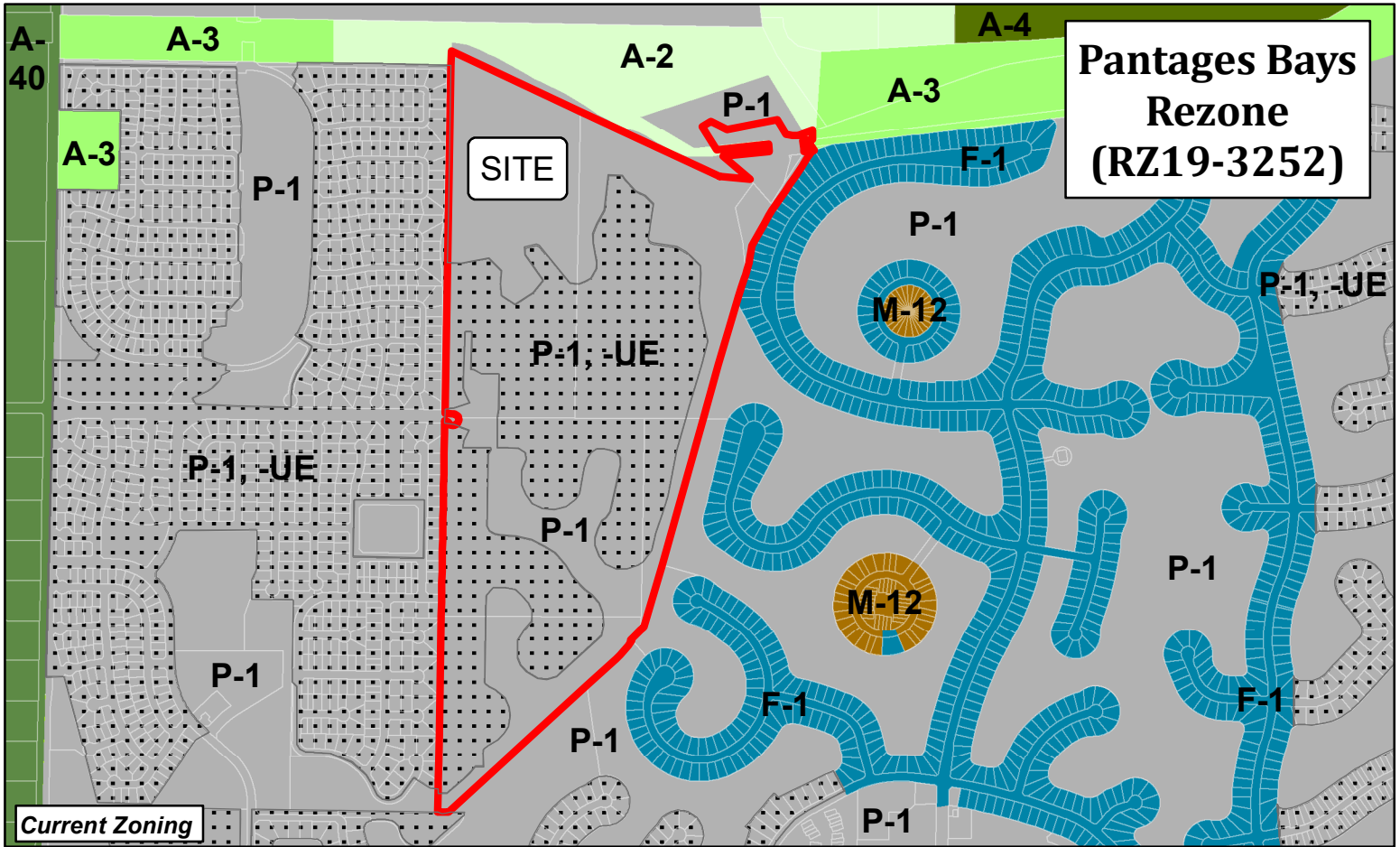


Map Created 03/24/2021
 by Contra Costa County Department of
 Conservation and Development, GIS Group
 30 Muir Road, Martinez, CA 94553
 37:59:41.791N 122:07:03.756W

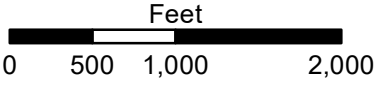
This map was created by the Contra Costa County Department of Conservation and Development with data from the Contra Costa County GIS Program. Some base data, primarily City Limits, is derived from the CA State Board of Equalization's tax rate areas. While obligated to use this data the County assumes no responsibility for its accuracy. This map contains copyrighted information and may not be altered. It may be reproduced in its current state if the source is cited. Users of this map agree to read and accept the County of Contra Costa disclaimer of liability for geographic information.



Pantages Bays Rezone (RZ19-3252)



	Project Site
	Parcels
Zoning	
	M-12 (Multiple Family Residential)
	F-1 (Water Recreational)
	A-2 (General Agriculture)
	A-3 (Heavy Agriculture)
	A-4 (Agricultural Preserve)
	A-40 (Exclusive Agriculture)
	P-1 (Planned Unit)
	P-1 -UE (Urban Farm - Animal Exclusion Overlay)

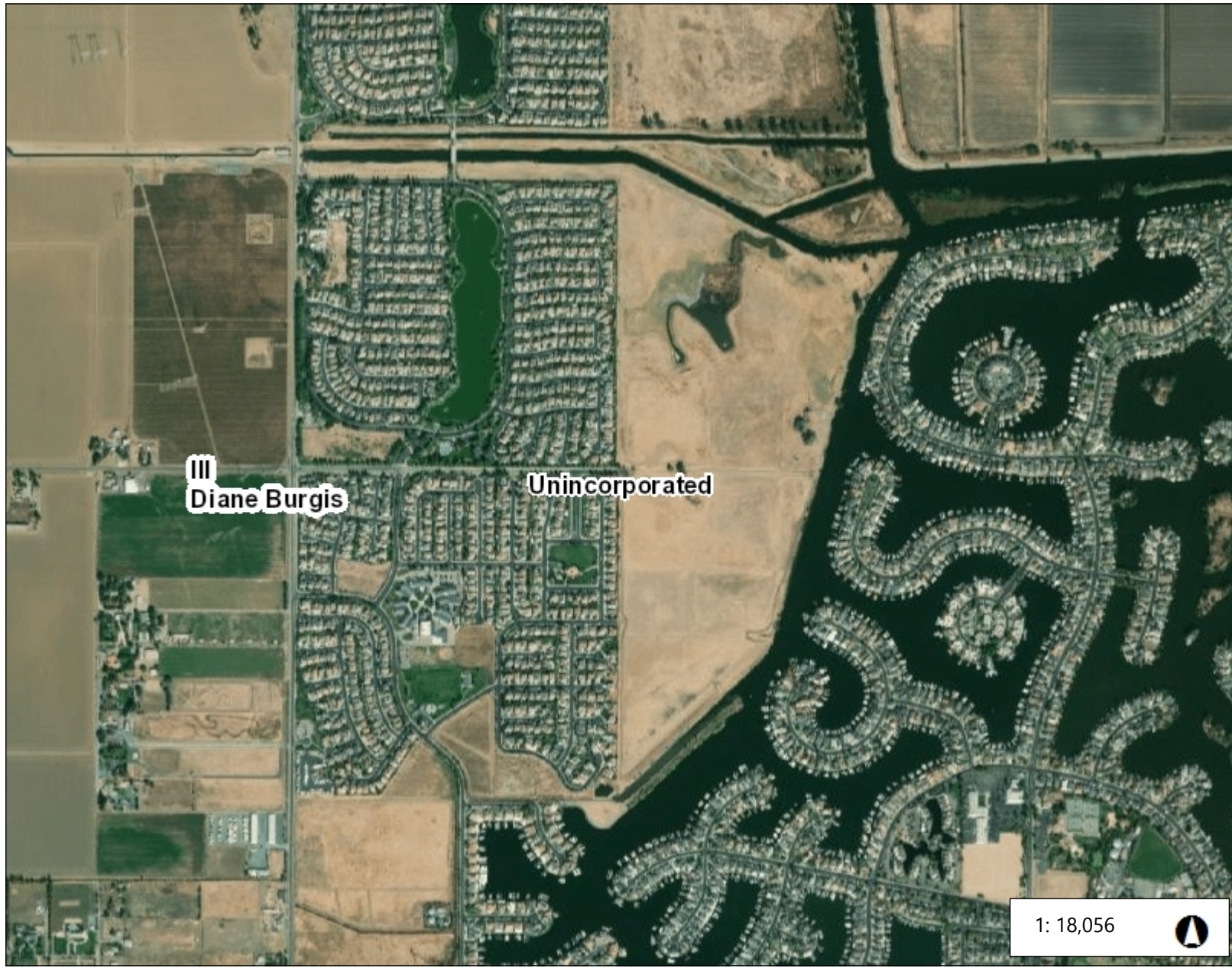


Map Created 03/23/2021
 by Contra Costa County Department of
 Conservation and Development, GIS Group
 30 Muir Road, Martinez, CA 94553
 37:59:41.791N 122:07:03.756W



This map was created by the Contra Costa County Department of Conservation and Development with data from the Contra Costa County GIS Program. Some base data, primarily City Limits, is derived from the CA State Board of Equalization's tax rate areas. While obligated to use this data the County assumes no responsibility for its accuracy. This map contains copyrighted information and may not be altered, it may be reproduced in its current state if the source is cited. Users of this map agree to read and accept the County of Contra Costa disclaimer of liability for geographic information.



Aerial Photograph



Legend

-  Board of Supervisors' Districts
-  City Limits
- Unincorporated
- World Imagery
- Low Resolution 15m Imagery
- High Resolution 60cm Imagery
- High Resolution 30cm Imagery
- Citations

1: 18,056 

0.6 0 0.28 0.6 Miles

WGS_1984_Web_Mercator_Auxiliary_Sphere

This map is a user generated static output from an Internet mapping site and is for reference only. Data layers that appear on this map may or may not be accurate, current, or otherwise reliable.

THIS MAP IS NOT TO BE USED FOR NAVIGATION

Notes

Contra Costa County -DOIT GIS