

CONTRA COSTA COUNTY

EMPLOYMENT & HUMAN SERVICES

Contra Costa County Employment and Human Services Department

CalFresh Report

Family and Human Services Committee

May 24, 2021



Contra Costa County Quick Facts

\$156,175,070
CalFresh assistance issued to Contra Costa residents between
April 2020 – March 2021.
Source: CalWIN

76,427
Residents on
CalFresh

38%
of CalFresh
recipients are
children

*Source: CalWIN; CDSS CalFresh
Dashboard*

10%
2021 projected
overall food
insecurity rate

14.4%
2021 projected child
food insecurity rate

Source: Feeding America

90%
CalFresh persons
enrolled in
Medi-Cal

26%
Medi-Cal persons
enrolled in CalFresh

Source: CDSS CalFresh Dashboard

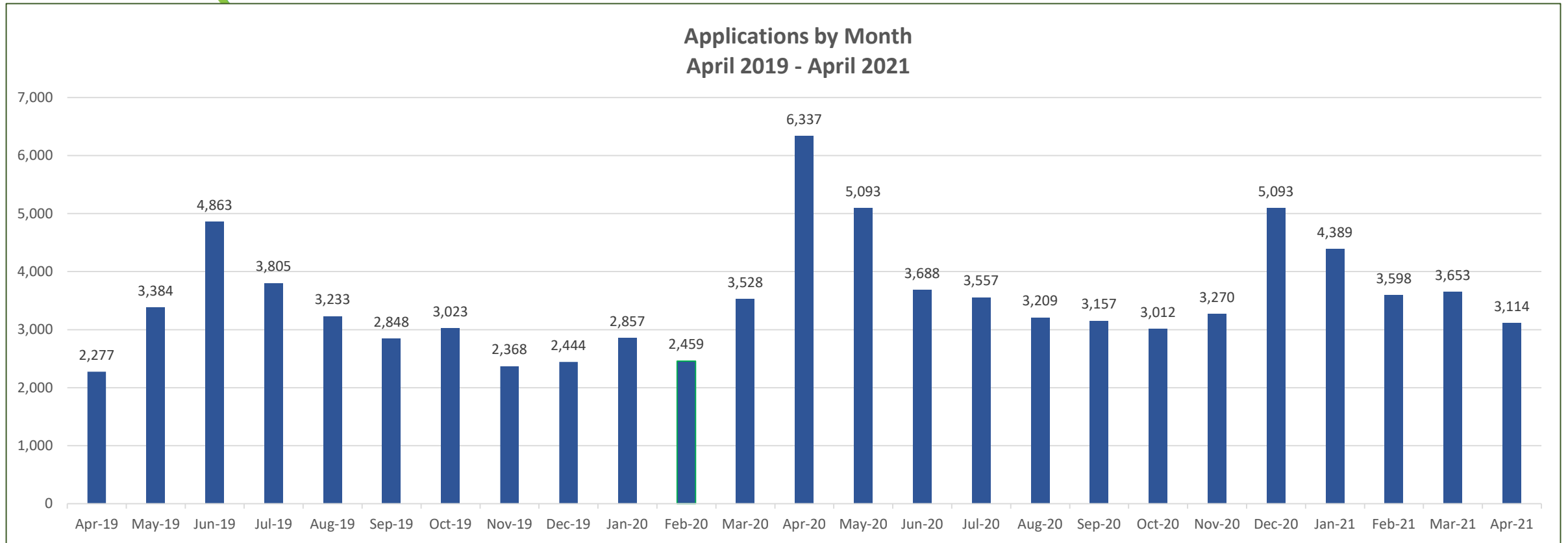
53%
CalFresh
households opted
in for text messages

Source: CalWIN

25
New eligibility
workers in CalFresh
training



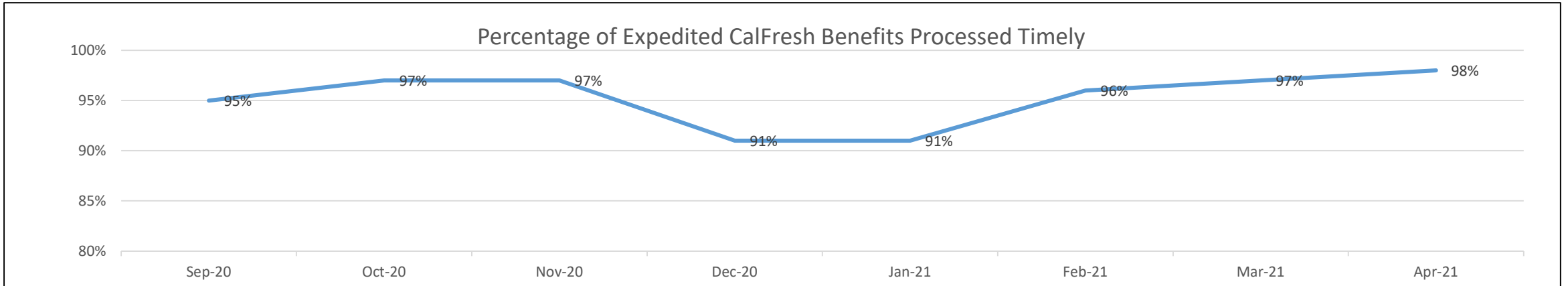
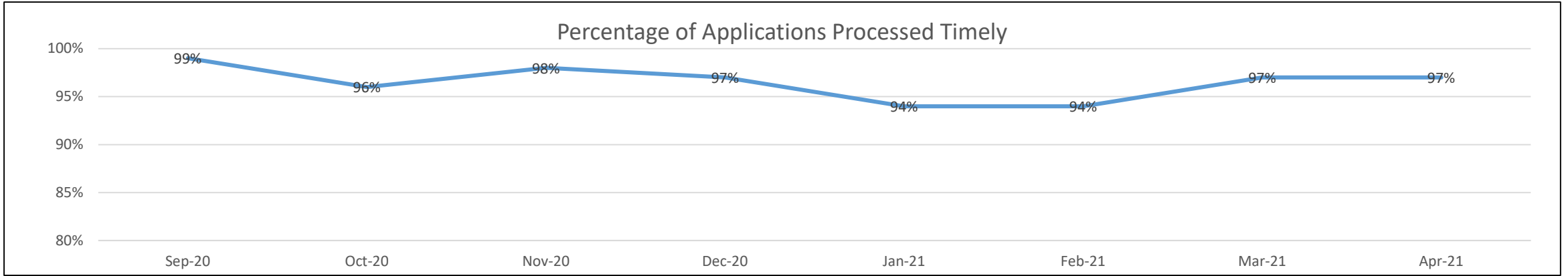
Application Waves



Key drivers of application waves:

- Expansion of CalFresh eligibility to Supplemental Security Income recipients previously ineligible (May 2019)
- Pandemic shelter-at-home order (March 2020)
- EDD outreach to households with CARES Act unemployment benefits ending (December 2020)

CalFresh Application Processing Timeliness

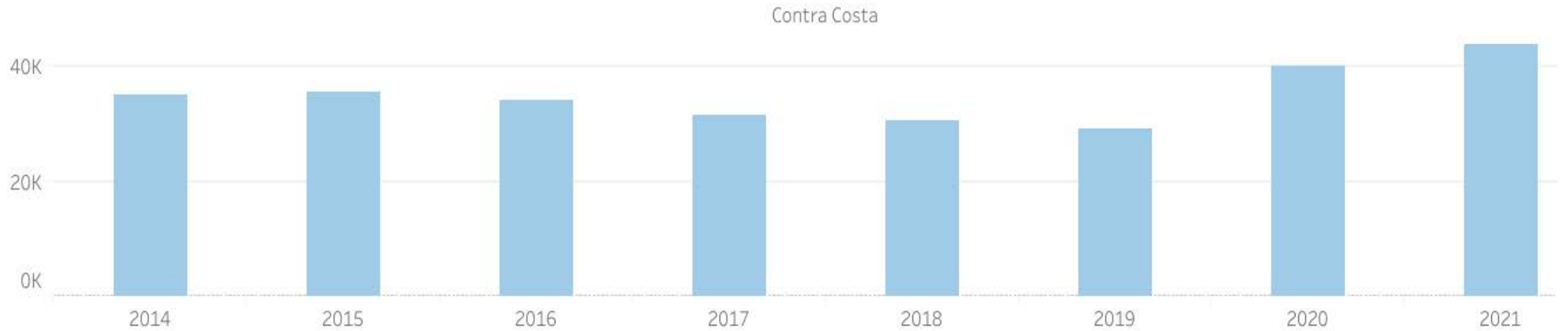


EHSD has remained in compliance with timely application processing since the last FHS Report in September 2020.



Historical Annual Participation

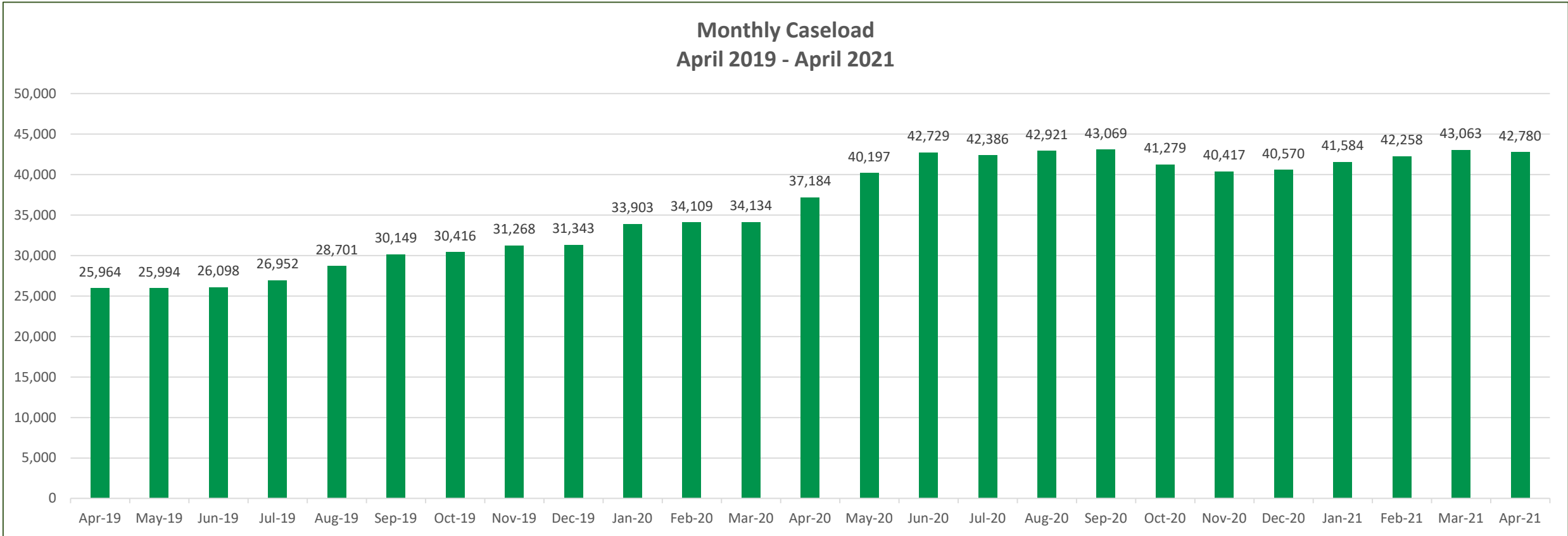
CalFresh Households Calendar Year Average



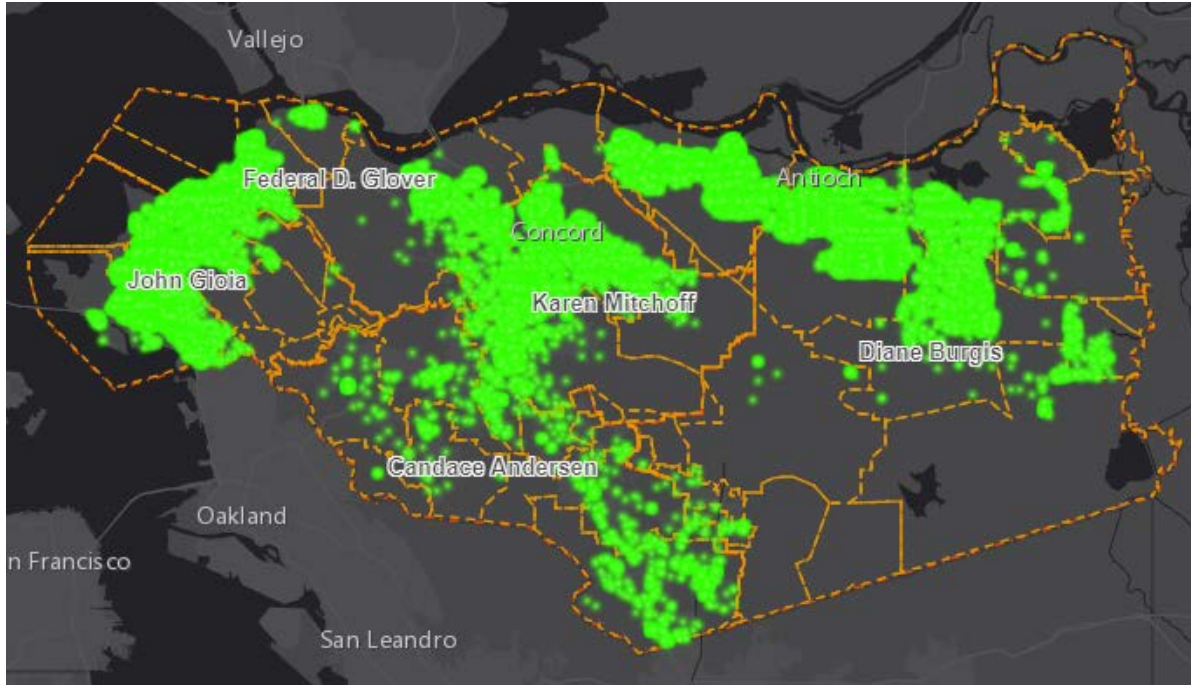
Source: CalFresh Participation and Benefit Issuance Report (DFA 256)



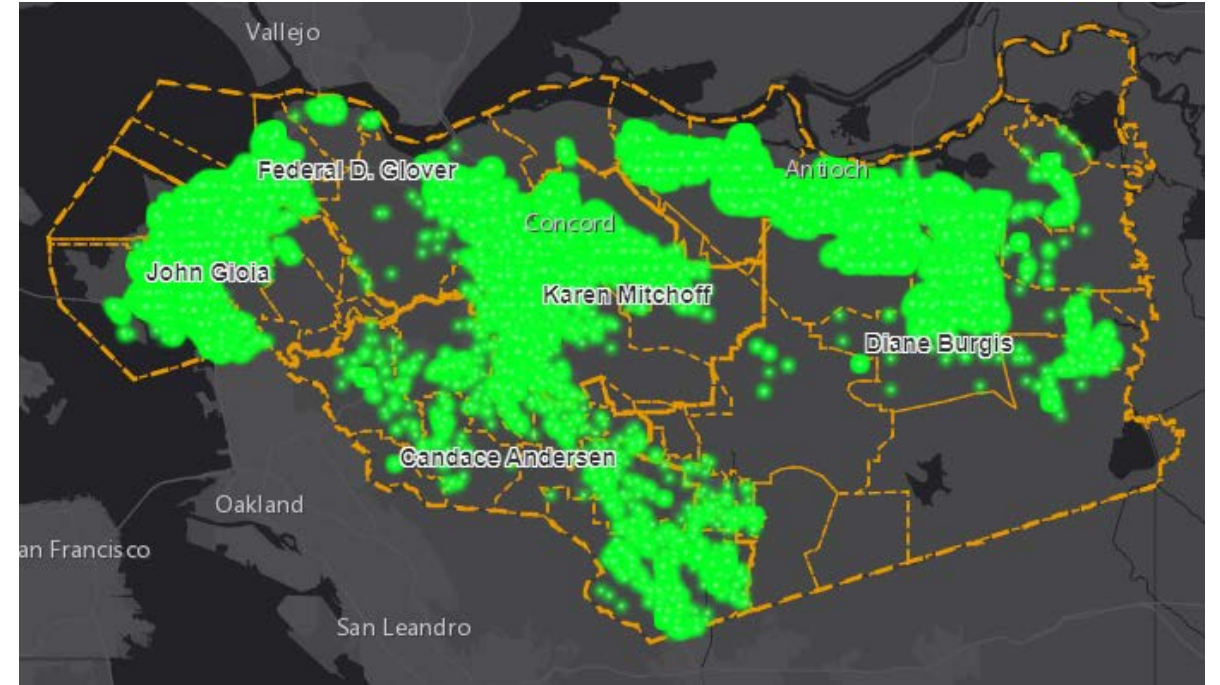
Recent Caseload Trend



Through the Public Health Emergency, the CalFresh caseload has remained at historic levels.



March 2020

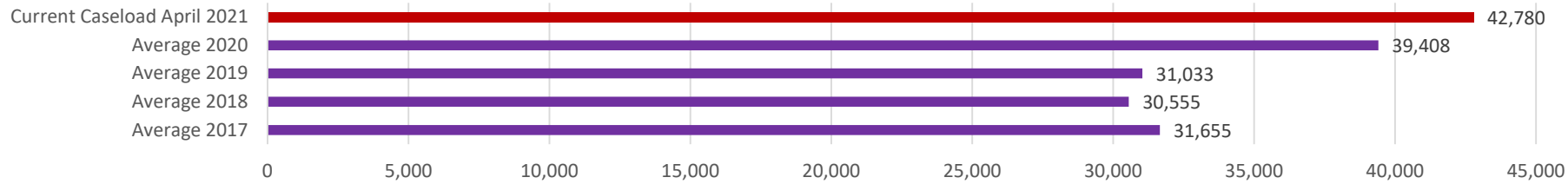


December 2020



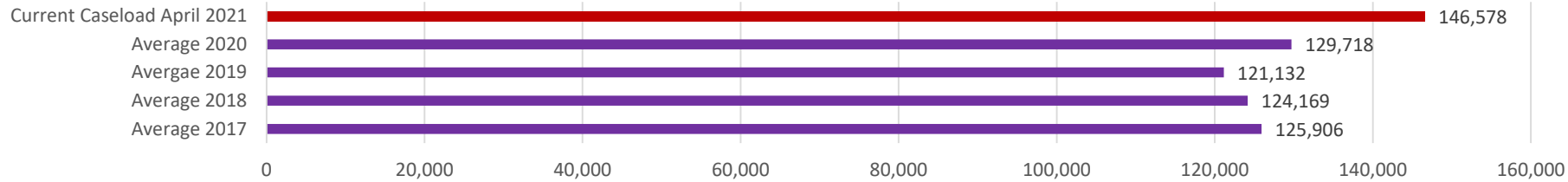
Program Comparison

CalFresh Caseload Averages 2017-2020 and Current Caseload April 2021



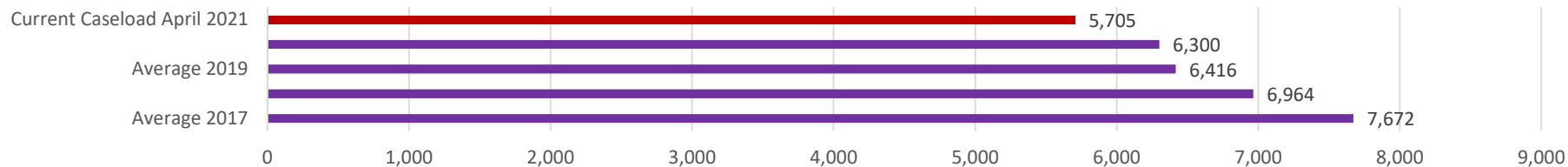
Number of CalFresh Individuals served in April 2021:
76,427

Medi-Cal Caseload Averages 2017-2020 and Current Caseload April 2021



Number of Medi-Cal Individuals served in April 2021:
280,458

CalWORKs Caseload Averages 2017-2020 and Current Caseload April 2021



Number of CalWORKs Individuals served in April 2021:
12,334



Program Updates

➤ **Temporary Benefit Enhancements and Expansions**

- Enhanced CalFresh emergency allotments continue.
 - Effective April 2021, every CalFresh household receives a minimum of \$95 in CalFresh emergency allotment benefits.
- CalFresh student eligibility expanded through public health emergency to include college students who are eligible for work study or have a \$0 Expected Family Contribution, regardless of work or exemption status.
- The State will be issuing new Pandemic EBT cards to families with eligible children between June and September 2021.

➤ **Federal and State Program Changes**

- 5.3% COLA to CalFresh benefits implemented in October 2020.
- Public charge rule changes rescinded.
- All County Letter recently issued requiring MC eligibility workers to be cross trained to CalFresh by January 2022 to increase dual program enrollment.
- CalFresh over issuance forgiveness policy for households with disabled or elderly members approved by FNS.

The logo for CalFresh features the word "Cal" in a green cursive font, followed by a stylized graphic of a green leaf with red and purple accents, and the word "Fresh" in a bold green sans-serif font.

CalFresh Reducing Procedural Denials

Top 3 denial reasons

1. Over income
2. Missed mandatory interview appointment
3. Failed to provide mandatory verification

Strategies implemented since March 2020 to reduce procedural denials

- Changed CalFresh intake model to predominantly same day application interviews
- Telephonic signature for applications and recertifications
- EHSD.org updated to receive verifications for applications and recertifications
- Secure texting and emailing with customers to receive verifications immediately



Outreach

- ❖ The outreach mailing to all Supplemental Security Income (SSI)/In-Home Supportive Services (IHSS) recipients has been completed.
 - An additional 1024 SSI/IHSS households were added to CalFresh since September 2020.
- ❖ CalFresh Program Analysts conducted a virtual “Just the Basics” CalFresh training for community partners on May 21st.
- ❖ The Food Bank of Contra Costa and Solano, our CalFresh outreach partner, is engaged in the following activities:
 - Medi-Cal recipient mailer in June 2021
 - Outreach to patients in County Health Clinics identified as food insecure to provide information about CalFresh and other community food resources
 - Enhanced referral process with WIC
 - Facebook Food Finder Live and Eventbrite CalFresh/Food Resource series in English and Spanish



Questions?