



Agenda

AD HOC COMMITTEE ON COVID-19 ECONOMIC IMPACT AND RECOVERY

May 21, 2020
1:30 P.M.

Join Zoom Meeting from:

PC, Mac, Linux, iOS or Android:
<https://atttrials.zoom.us/j/98712831644>

Or Telephone:
USA 312 777 1449
USA 888-331-6293 (US Toll Free)
Conference code: 918542
Find local AT&T Numbers:
<https://www.teleconference.att.com/servlet/glbAccess?process=1&accessNumber=USA3127771449&accessCode=918542>

Supervisor Candace Andersen, Chair
Supervisor Karen Mitchoff, Vice Chair

Agenda Items:	Items may be taken out of order based on the business of the day and preference of the Committee
----------------------	--

1. Introductions
2. Public comment on any item under the jurisdiction of the Committee and not on this agenda (speakers may be limited to three minutes).
3. RECEIVE and APPROVE the partial Record of Action for the May 14, 2020 meeting.
4. CONSIDER the impacts of COVID-19 on the following business sectors and discuss pathways that may allow these business to resume, if possible, within the limitations established by the County Health Officer:
 1. Recreation/Lifestyle Services
 - a. Health Clubs/Gyms
 - b. Camping/RV Parks
 - c. Swimming Schools
 - d. Municipal Parks and Recreation Programs
 2. Curbside Retail and Associated Warehousing / Manufacturing
5. The next meeting is currently scheduled for May 28, 2020.
6. Adjourn

The Ad Hoc Committee on Covid-19 Economic Impact and Recovery will provide reasonable accommodations for persons with disabilities planning to attend Committee meetings. Contact the staff person listed below at least 72 hours before the meeting.

Any disclosable public records related to an open session item on a regular meeting agenda and distributed by the County to a majority of members of the Ad Hoc Committee on Covid-19 Economic Impact and Recovery less than 96 hours prior to that meeting are available for public inspection at 651 Pine Street, 10th floor, during normal business hours. Staff reports related to items on the agenda are also accessible on line at www.contracosta.ca.gov.

Public comment may be submitted via electronic mail on agenda items at least one full work day prior to the published meeting time.

For Additional Information Contact:

Julie DiMaggio Enea, Committee Staff
Phone (925) 335-1077, Fax (925) 646-1353
julie.enea@cao.cccounty.us



Contra Costa County Board of Supervisors

Subcommittee Report

AD HOC COMMITTEE ON COVID-19 ECONOMIC IMPACT AND RECOVERY

Meeting Date: 05/21/2020
Subject: RECORD OF ACTION FOR MARCH 14, 2020 MEETING
Submitted For: David Twa, County Administrator
Department: County Administrator
Referral No.:
Referral Name:
Presenter: Julie DiMaggio Enea **Contact:** Julie DiMaggio Enea
(925) 335-1077

Referral History:

County Ordinance requires that each County body keep a record of its meetings. Though the record need not be verbatim, it must accurately reflect the agenda and the decisions made in the meeting.

Referral Update:

Due to a technical problem with the County's enterprise Zoom account, only a portion of the Record of Action for the May 14, 2020 could be completed. The Zoom history for the meeting is no longer accessible.

Attached is the draft Record of Action for the portion of the May 14, 2020 meeting that could be accessed.

Recommendation(s)/Next Step(s):

RECEIVE and APPROVE the partial Record of Action for the May 14, 2020 meeting.

Fiscal Impact (if any):

No fiscal impact.

Attachments

DRAFT Partial Record of Action 5-14-2020



AD HOC COMMITTEE ON COVID-19 ECONOMIC IMPACTS AND RECOVERY

RECORD OF ACTION FOR
May 14, 2020

Supervisor Candace Andersen, Chair
Supervisor Karen Mitchoff, Vice Chair

Present: Chair Candace Andersen
Vice Chair Karen Mitchoff

1. Introductions
2. Public comment on any item under the jurisdiction of the Committee and not on this agenda (speakers may be limited to three minutes).

The following individuals commented:

Nick Despota regarding budgetary impacts, climate goals and economic recovery goals.

Pamela Hill regarding in-home hands-on cancer (lymphatic drainage) therapy services, which may fall under Stage 3 of the Governor's recovery plan.

Dr. Farnitano clarified that there are some exceptions for medical-based procedures, with proper protection and practices.

3. RECEIVE and APPROVE the Record of Action for the May 7, 2020 meeting.

The Committee approved the Record of Action for the May 7, 2020 meeting as presented.

AYE: Chair Candace Andersen, Vice Chair Karen Mitchoff
Passed

4. CONSIDER the impacts of COVID-19 on the following business sectors and discuss pathways that may allow these business to resume, if possible, within the limitations established by the County Health Officer:
 1. Personal Services
 1. Personal services in the home such as cleaning services, piano tuners
 2. Personal services outside the home in salons, individual suites
 2. Recreation/Lifestyle Services
 1. Health Clubs/Gyms

2. Camping/RV Parks
3. Swimming Schools
4. Municipal Parks and Recreation Programs

Chair Andersen provided an overview of changes in the County's COVID-19 situation since last week's meeting:

- *1089 cases, 919 recovered, 33 deaths, 137 active cases*
- *update to isolation quarantine orders to change period from 7 to 10 days after symptom onset*
- *redefining infectious period or those who are asymptomatic and test positive to 48 hours to identify close contacts, defined as those coming within 6 feet of a case for at least 15 min during infectious period*
- *Orinda care center cases have run their course*
- *SIP changes merging toward Phase 2 forthcoming due to progress in key reopening indicators*
- *More testing sites are now available*
- *New school graduation guidelines on County website*
- *Accepting applications for people who want to assist with contact tracing*

Personal in-home services: Example, piano tuners or house cleaners.

Dr. Farnitano advised that such a service would fall under later part of Phase 2 under the Governor's roadmap. The Governor has identified three groups of counties: those whose recovery would parallel the State, extremely rural with few/no cases that would recover faster than the State, and urban counties with dense population with higher numbers that would trail behind the State. The Bay Area falls into the third group. CCC initial SIP order was more restrictive than the State and our pace is a little slower than the State.

The follow person commented:

Shawna Garvin regarding Christian values and need to meet together in fellowship, and the negative impacts of isolation.

Personal services outside the home: Example salons. Dr. Farnitano advised that these services fall under Phase of the recovery plan. Businesses should read the checklists for each industry to get prepared to open and operate safely once permitted. The County doesn't intend to create different guidelines than the State, though the County's timing might be different. Local orders will be aligned with the State's.

Dr. Farnitano reviewed the varying degrees of safety depending on the type of masks worn and the distance between individuals.

Health Clubs/Gyms/Swimming/

Health Clubs, Gyms and public pools (any pool not in a private home) will be covered in the State's Phase 3. There is evidence that the risk of transmission increases while people are exercising because the particles travel farther. Child camps involving stable groups of less than 12 with consistent adult supervision will be permitted for childcare for persons working during the pandemic. This exception doesn't apply to

adult swimmers or public pools outside this camp setting.

The follow persons commented:

- *Lisa Blackwell regarding swimming for patients and the efficacy of chlorine against the virus.*
- *Marcy regarding studio gyms vs big box gyms.*
- *J Canesa regarding lap swimming in a public pool.*
- *Lauren Sondel regarding fitness studios by appointment only and personal training.*
- *Chris Rasmussen regarding coaching at children's camps, and inconsistency in rules between different types of businesses.*
- *Christine Hernandez regarding how close proximity is defined*
- *Melanie Kress regarding children's camp swim guidelines*
- *Matt Struempf regarding children's camp swim guidelines and lifeguard duties*
- *Liz Claytor regarding swim lessons for the summer season and mixed messaging*
- *Tilde regarding*

Dr. Farnitano explained that differing rules between businesses types relate more to the essentiality of the service. The County's are primarily relying on the State to define the business operating rules. He also clarified that lifeguards could potentially with older kids be considered part of support staff and not part of the staff that work closely with groups of children.

Chair Andersen explained that enforcement of the Health Order is by cities. The County is providing guidance and people and businesses are expected to self-govern.

(Due to technical issues with the County's virtual meeting account, the remainder of the Record of Action could not be completed.)

5. The next meeting is currently scheduled for May 21, 2020 at 1:30 p.m.

The Committee confirmed the next scheduled meeting date/time, as agendized.

AYE: Chair Candace Andersen, Vice Chair Karen Mitchoff
Passed

6. Adjourn

Chair Andersen adjourned the meeting at approximately 3:00 p.m.

For Additional Information Contact:

Julie DiMaggio Enea, Committee Staff
Phone (925) 335-1077, Fax (925) 646-1353
julie.enea@cao.cccounty.us

DRAFT



Contra Costa County Board of Supervisors

Subcommittee Report

AD HOC COMMITTEE ON COVID-19 ECONOMIC IMPACT AND RECOVERY

Meeting Date: 05/21/2020
Subject: COVID-19 Recovery Road Map for Personal Services
Businesses and Recreation/Lifestyle Services
Submitted For: David Twa, County Administrator
Department: County Administrator
Referral No.:
Referral Name:
Presenter: **Contact:**

Referral History:

Although the Board of Supervisors has authority over County issues, under State law, when an emergency of this nature is declared and there is a pandemic of this magnitude, the Health Officer of each County has the legal authority to impose whatever orders she or he deem necessary to protect the public.

On Tuesday, April 21, the Board of Supervisors formed this ad hoc committee to advise the Health Department on COVID19 impacts. The goal of the committee is to work toward having a sustainable COVID-19 mitigation and recovery plan. The committee will be working with the community and industry on issues of concern, advising the Board of Supervisors and the Health Officer on possible ways to interpret and apply Health Orders so they will continue to keep the community safe, but allow more businesses to re-open and provide common-sense applications to outdoor activities.

The Committee conducted its first meeting on May 7, 2020 and plans to meet weekly, taking up issues related to different business sectors at each meeting. The Committee previously identified eight business sectors to focus on over the course of the next several meetings:

1. Faith organizations
2. Recreation and Lifestyle
3. Restaurant
4. In-home and other personal services
5. RV/Park
6. Small businesses
7. Thrift sales & collection
8. Furniture

Referral Update:

Relevant Excerpts From the California Corona Virus Response Website:

Californians have been staying home and saving lives since the start of the statewide stay-at-home order issued on March 19, 2020. These efforts have allowed the state to move forward on its [roadmap](#) for modifying the statewide order.

STAGE 1: Safety and preparedness

Make workplaces safe for our essential workers.

STAGE 2: Lower-risk workplaces

Gradually reopen retail (curbside only), manufacturing & logistics. Later, relax retail restrictions, adapt & reopen schools, child care, offices & limited hospitality, personal services.

STAGE 3: Higher-risk workplaces

Adapt and reopen movie theaters, religious services, & more personal & hospitality services.

STAGE 4: End of Stay Home Order

Reopen areas of highest risk: e.g. Concerts, conventions, sports arenas.

When modifications are advanced and the state's [six indicators](#) show we've made enough progress, we can move to the next stage of the roadmap. Stage 2 expansion will be phased in gradually. Some communities may move through Stage 2 faster if they are able to show greater progress. Counties that have met the readiness criteria and worked with the California Department of Public Health can open more workplaces as outlined on the [County Variance page](#).

Industry guidance to reduce the risk

California will move into Stage 2 of modifying the state's Stay-at-Home order on May 8, 2020. Our progress in achieving key [public health metrics](#) will allow a gradual re-opening of California's economy. We recognize the impact of economic hardship. We must get our economy roaring once again and put paychecks in people's pockets. But the risk of COVID-19 infection is still real for all Californians and continues to be fatal. That is why every business should take every step humanly possible to reduce the risk of infection:

- Plan and prepare for re-opening
- Make radical changes within the workplace
- Adjust practices by employees and help educate customers

Below are [guidance](#) for each early Stage 2 business to follow. The goal is a safe, clean environment for workers and customers. Businesses may use effective alternative or innovative methods to build upon the guidance. Review the guidance that is relevant to your workplace, prepare a plan based on the guidance for your industry, and put it into action. When complete, you can post the industry-specific checklist (below) in your workplace to show your customers and your employees that you've reduced the risk and are open for business. Before reopening, all facilities must:

1. Perform a detailed risk assessment and implement a site-specific protection plan
2. Train employees on how to limit the spread of COVID-19, including how to [screen themselves for symptoms](#) and stay home if they have them
3. Implement individual control measures and screenings
4. Implement disinfecting protocols
5. Implement physical distancing guidelines

It is critical that employees needing to self-isolate because of COVID-19 are encouraged to stay at home, with sick leave policies to support that, to prevent further infection in your workplace. See additional information on [government programs supporting sick leave and worker's compensation for COVID-19](#).

The State describes high-risk workplaces/venues to include:

- Personal services such as nail salons, tattoo parlors, gyms and fitness studios
- Hospitality services, such as bars and lounges
- Entertainment venues, such as movie theaters, gaming facilities, and pro sports
- Indoor museums, kids museums and gallery spaces, zoos, and libraries
- Community centers, including public pools, playgrounds, and picnic areas
- Religious services and cultural ceremonies
- Nightclubs
- Concert venues
- Festivals
- Theme parks
- Hotels/lodging for leisure and tourism

Out-of-home personal services such as salons, and recreation and community facilities are generally categorized by the State as high-risk workplaces/venues, which could re-open with limitations at Stage 3 of the State's recovery road map.

It is unclear how at-home personal services are categorized and their category may depend on whether or not social distancing can be maintained and how much personal contact is required.

Community centers, public swimming facilities, picnic areas are included in the State's high-risk category and would not be permitted during Stage 2 of the recovery.

Recommendation(s)/Next Step(s):

CONSIDER the impacts of COVID-19 on the following business sectors and discuss pathways that may allow these business to resume, if possible, within the limitations established by the County Health Officer:

1. Recreation/Lifestyle Services
 - a. Health Clubs/Gyms
 - b. Camping/RV Parks
 - c. Swimming Schools
 - d. Municipal Parks and Recreation Programs
2. Curbside Retail and Associated Warehousing / Manufacturing

Fiscal Impact (if any):

No fiscal impact. The Committee's meetings facilitate the exchange of information and ideas.

Attachments

Update-on-California-Pandemic-Roadmap

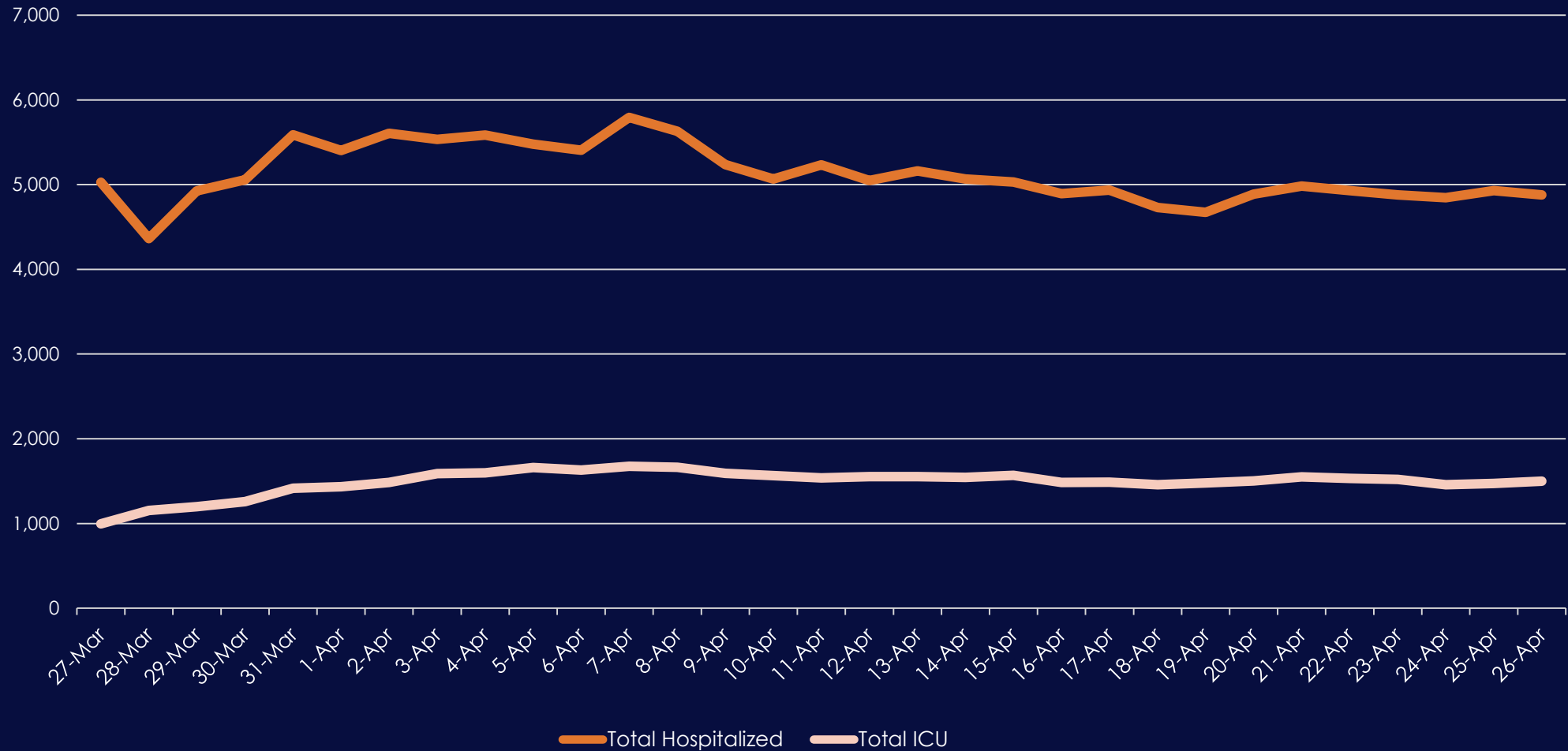


Update on California's Pandemic Roadmap

6 Indicators for Modifying Stay-at-Home Order

- Ability to test, contact trace, isolate, and support the exposed
- Ability to protect those at high risk for COVID-19
- Surge capacity for hospital and health systems
- Therapeutic development to meet the demand
- Ability of businesses, schools, and childcare facilities to support physical distancing
- Determination of when to reinstitute measures like Stay-At-Home

California Hospitalization Trend Lines



Total includes both COVID-19 confirmed positive hospitalizations as well as COVID-19 suspect hospitalizations.

The Basics



COVID-19 is not going away soon.



Modifications to Stay-At-Home Order must be guided by health risk and a commitment to equity.



Taking responsibility is key at all levels – individual, business, and government.

Resilience Roadmap Stages

STAGE 1: Safety and Preparedness

Making essential workforce environment as safe as possible.

STAGE 2: Lower Risk Workplaces

Creating opportunities for lower risk sectors to adapt and re-open.

Modified school programs and childcare re-open.

STAGE 3: Higher Risk Workplaces

Creating opportunities for higher risk sectors to adapt and re-open.

STAGE 4: End of Stay-At-Home Order

Return to expanded workforce in highest risk workplaces.

Requires
Therapeutics.

Stage 1: Safety and Preparedness

This is where we are now.

- **Continue to build out testing, contact tracing, PPE, and hospital surge capacity.**
- **Continue to make essential workplaces as safe as possible.**
 - Physical and work flow adaption
 - Essential workforce safety net
 - Make PPE more widely available
 - Individual behavior changes
- **Prepare sector-by-sector safety guidelines for expanded workforce.**

Stage 2: Lower Risk Workplaces

Gradually opening some lower risk workplaces with ADAPTATIONS:

- Retail (e.g. curbside pickup)
- Manufacturing
- Offices (when telework not possible)
- Opening more public spaces

Expanded Workforce Safety Net:

- Wage replacement so workers can stay home when sick

Stage 2: Lower Risk Workplaces

Schools and Childcare Facilities with Adaptations:

- Summer programs and next school year potentially starting sooner (July/August)
- Childcare facilities to provide more care
- Address learning gaps
- Ensure students and staff are protected
- Allow broader workforce to return to work

Actions needed to get from Stage 1 to Stage 2



Government Actions

- Policies that allow people to stay home when they're sick
- Guidance provided on how to reduce risk



Business Actions

- Wage replacement so workers can stay home when sick
- Implement adaptations to lower-risk workplaces NOW
- Employees continue to work from home when possible



Individual Actions

- Safety precautions – physical distancing, face coverings, etc.
- Avoid all non-essential travel
- Support and care for people who are at high risk

When are we ready for Stage 2?

Key indicator considerations to move to Stage 2:

- Hospitalization and ICU trends stable.
- Hospital surge capacity to meet demand.
- Sufficient PPE supply to meet demand.
- Sufficient testing capacity to meet demand.
- Contact tracing capacity statewide.

Transition to Stage 2 will occur through a statewide modification to the Stay-At-Home Order.

Opportunity for Regional Variations

During Stage 2, counties may choose to relax stricter local orders at their own pace.

Following Stage 2, once a statewide COVID-19 surveillance system is made possible through testing, further regional variations could be supported.

State will consult and collaborate closely with local governments.

Stage 3: Higher Risk Workplaces

Open higher risk environments with adaptations and limits on size of gatherings:

- Personal care (hair and nail salons, gyms)
- Entertainment venues (movie theaters, sports without live audiences)
- In-person religious services (churches, weddings)

Stage 4: End of Stay-At-Home Order

Re-open highest risk workplaces with all indicators satisfied once therapeutics have been developed:

- Concerts
- Convention Centers
- Live audience sports

Be Part of the Solution

Stay Home. Practice Physical Distancing.

We are enlisting all Californians to help inform the development of guidance for sectors across our economy.

This guidance will provide a framework for how to safely re-open.

CALIFORNIA
ALL

**Your Actions
Save Lives**

covid19.ca.gov