

Contra Costa County

Agricultural
Crop Report
2019
2021 Calendar



Steve Verduzco

Cover

Table of Contents - Staff

Agricultural Commissioner and Sealer's Letter

General Information of Contra Costa County

November – December 2020 Calendar

January: **Leading Crops - Mission Statement**

February: **Production Summary**

March: **Nursery Production**

April: **Fruit & Nut Crops**

May: **U Pick**

June: **Pest Detection**

July: **Certified Farmers' Markets**

August: **Livestock & Livestock Products**

September: **Pest Management & Pest Exclusion**

October: **Vegetable & Seed Crops**

November: **Field Crops**

December: **Weights & Measures**

**Agricultural Commissioner /
Director of Weights & Measures**

Matt Slattengren

**Assistant Agricultural Commissioner /
Sealer of Weights and Measures**

Jose Arriaga

Deputy Agricultural Commissioners

Beth Slate, Larry Yost

Deputy Sealer of Weights and Measures

Gil Rocha

Agricultural Biologists

Simone Ackermann, Karen Adler, Keri Brumfield,
Ralph Fonseca, Ivan Godwyn, David Hallinan,
Omar Luna, Lucas Pattie, Wil Schaub, Greg Spurlock,
Jorge Vargas, Janessa Weingand

Weights & Measures Inspectors

Gabriel Adebote, Patrick Bowen, Christine Buelna,
Ngozi Egbuna, Harmeet Gil, Chris Michaels

Agricultural & Standards Aides

Karin Linnen, Shannon Smith

Administrative Support

Roxann Crosby, Stephanna Hidalgo

Information Technology Support

Michael Liu

**Pest Detection, Pest Management & Glassy-
winged Sharpshooter Staff**

Ana De Abreu, Danilo Angcla, Nancy Dennis,
Beth Jessen, Warren Kawamoto, Lauryn Lei,
John Luzar, David Maderios, Rick Mata, Linda Mazur,
Kerry Motts, Connor Nitsos, Eldren Prieto,
Sarah Ratto, Laura Matta-Russo, Daniel Sinz,
Lindsay Skidmore, Stephen Vollmer, Oscar Zaldua

Pest Quarantine Detector Canine

Major

Contra Costa County

Department of Agriculture / Weights & Measures

2380 Bisso Lane Suite A, Concord, CA 94520 Tel: (925) 608-6600

<http://www.co.contra-costa.ca.us/1542/Agriculture-Weights-Measures>

email: AgCommissioner@ag.cccounty.us

Agricultural Commissioner and Sealer's Letter

Karen Ross, Secretary
California Department of Food and Agriculture and
The Honorable Board of Supervisors of Contra Costa County

Contra
Costa
County

I am pleased to submit the 2019 Agricultural Crop & Livestock Report for Contra Costa County in accordance with the provisions of Section 2272 and 2279 of the California Food and Agricultural Code.

The total gross value of agricultural crops in 2019 was \$106,367,000, which is an increase of \$1,148,303 or 1% from 2018. In general, demand and prices have remained strong for agricultural crops in Contra Costa County. The crop values are rounded estimates based on data collected from producers, experts, and literature.



Crop values vary from year to year due to factors such as production, weather, and market conditions. Some notable changes include a production nursery acreage decrease of 44%. A majority of this decrease came from the closure of one of Contra Costa County's largest production nurseries. Nevertheless, the total value of nursery products for 2019 was down only .3% from 2018. Despite unexpected rains putting cherries at risk, the total value of cherry production rose 44% compared to 2018. Almonds accounted for approximately 18% of the 7,200 cultivated acres among Contra Costa County's 20 organic farms. The Agriculture Improvement Act of 2018 (2018 Farm Bill), effective January 1, 2019, removed industrial hemp from its Schedule I status of the Federal Controlled Substances Act. The first modern crop reporting of hemp in Contra Costa County is present in the miscellaneous field crop total. The miscellaneous category is used to maintain confidential values for commodities where there are less than three producers of one product or where one producer is responsible for 60% or more of the product entering the marketplace. The product total is combined with other totals to avoid disclosure of the business affairs of the firms involved. Therefore, we have combined hemp with other products of this nature.

Eleven crop categories exceeded one million dollars in value this year. These categories in decreasing order include cattle and calves, sweet corn, tomatoes, grapes, cherries, rangeland, alfalfa hay, peaches, walnuts, irrigated pasture, and apricots.

During the summer of 2019, County Pest Detection staff found four peach fruit flies while performing their inspections. This find increased the fruit fly detection efforts in East Contra Costa County to assess the extent of the infestation. The detection area became part of a delimitation plan; this delimitation includes portions of, the unincorporated county, Brentwood, Oakley, and Antioch. Efforts to contain and eradicate the infestation are currently underway using an attractant bait and fruit fly pheromone. County staff along with officials from the California Department of Food and Agriculture (CDFA) are working together to control the current peach fruit fly infestation and to prevent the affected area from expanding. They are working toward complete eradication of the infestation.

It should be emphasized that the values stated in this report are gross receipts and do not include the cost of production, transportation, or marketing of the products. The economic benefit of agricultural production is generally thought to be about three times the gross production value.

I truly appreciate the agricultural producers, farmers, ranchers, and organizations that shared information and supported our efforts in completing this report. Special recognition goes to all of the staff who assisted in compiling this information to make this report possible.

Respectfully Submitted,

A handwritten signature in black ink that reads "Matt Slattengren".

Matt Slattengren
Agricultural Commissioner
Director of Weights and Measures

Contra Costa Population 2018

Total County Population – 1.15 Million

- Antioch – 111,535
- Brentwood – 63,800
- Clayton – 12,192
- Concord – 129,688
- Town of Danville – 44,650
- El Cerrito – 25,601
- Hercules – 25,601
- Lafayette – 26,521
- Martinez – 38,402
- Town of Moraga – 17,692
- Oakley – 42,129
- Orinda – 19,806
- Pinole – 19,318
- Pittsburg – 72,437
- Pleasant Hill – 34,903
- Richmond – 110,146
- San Pablo – 31,124
- San Ramon – 75,839
- Walnut Creek – 69,825



California

- Ranked 1st Agricultural state in the U.S.
- Land – 163,696 sq miles
- Market Value products sold - \$45,154,359,000
- Livestock & Poultry – \$11,800,525,000
- Crops - \$33,353,834,000

Contra Costa

- Martinez has been county seat since 1850
- Ranked 36th county in Agriculture Production in California (2017)
- Ranked 51st out of 58 counties in California by land mass
- Ranked 1,321th Agricultural County of 3,143 counties in the U.S.
- Land - 716 square miles
- Water - 81 square miles
- Market Value products sold - \$ 83,229,000
- Livestock & Poultry - \$ 18, 823,000
- Crops – \$64,406,000



Iowa

- Ranked 2nd Agricultural state in the U.S.
- Land – 56,272 sq miles
- Market Value products sold - \$28,956,455,000
- Livestock & Poultry - \$15, 123, 882,000
- Crops - \$13,832,573,000

Rhode Island

- Ranked 50th Agricultural state in the U.S.
- Land 1,045 sq miles
- Water 169 sq miles
- Market value products sold - \$57,998,000
- Livestock & - \$17,089,000
- Crops – \$40,909,000

*Agricultural Statistics from USDA National Agricultural Statistics Service

November

2020

Sunday	Monday	Tuesday	Wednesday	Thursday	Friday	Saturday
1	2	3	4	5	6	7
Daylight Savings Ends		Election Day				
8	9	10	11	12	13	14
			Offices Closed Veterans Day			
15	16	17	18	19	20	21
22	23	24	25	26	27	28
				Offices Closed Thanksgiving	Offices Closed	
29	30					

December

2020

Sunday	Monday	Tuesday	Wednesday	Thursday	Friday	Saturday
		1	2	3	4	5
			Grower Continuing Education Meeting			Grower Continuing Education Meeting
6	7	8	9	10	11	12
13	14	15	16	17	18	19
20	21	22	23	24	25	26
				Christmas Eve	Christmas Offices Closed	
27	28	29	30	31		
				New Year's Eve		

Mission Statement

The Contra Costa County Department of Agriculture, under the direction of the California Department of Food and Agriculture, Department of Pesticide Regulation, and Division of Measurement Standards, is responsible for conducting regulatory and service activities pertaining to the agricultural industry and the consumers of our County. The primary goal of this office is to promote and protect agriculture while safeguarding the public and the environment. Our work as County Weights and Measures officials in the community ensures a safe place to live and a fair marketplace for trade.



Brentwood 1920

East Contra Costa Historical Society



1990 Brentwood
Population – 8,357

East Contra Costa Historical Society

The first recorded population in the US Census for Brentwood was 1950.

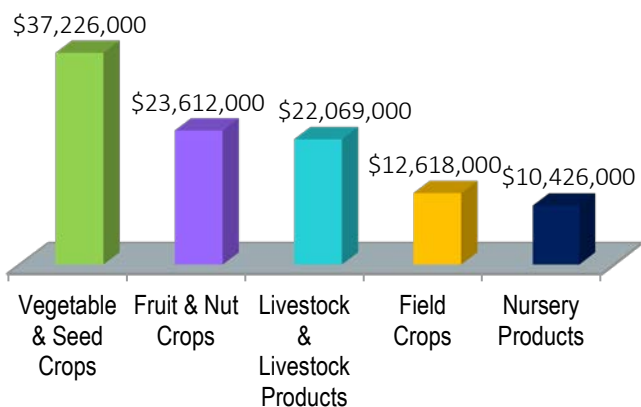
1950 – 1,729
1990 – 8,357
2018 – 63,800

January

2021

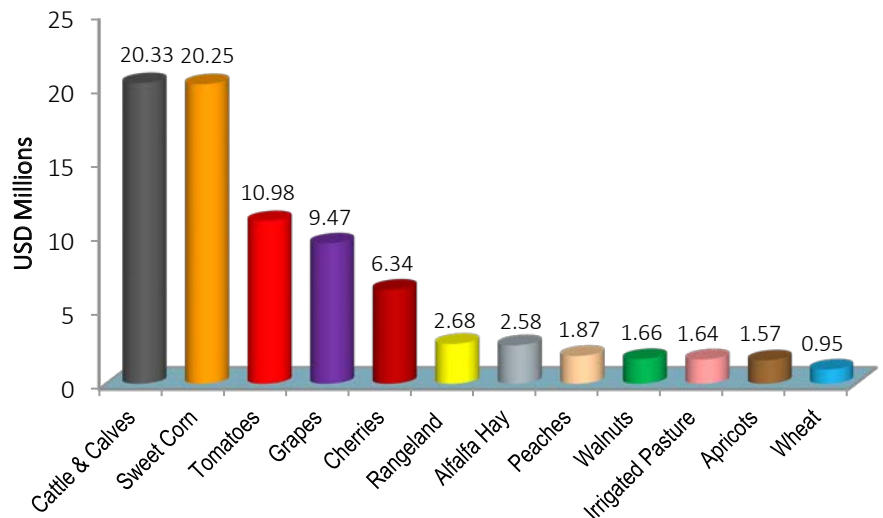
Sunday	Monday	Tuesday	Wednesday	Thursday	Friday	Saturday
					1 Offices Closed New Year's Day	2
3	4	5	6	7	8	9
10	11	12	13	14	15	16
17	18 Offices Closed Martin Luther King Jr. Day	19	20	21	22	23
24	25	26	27	28	29	30
31						

Gross Production Values by Category



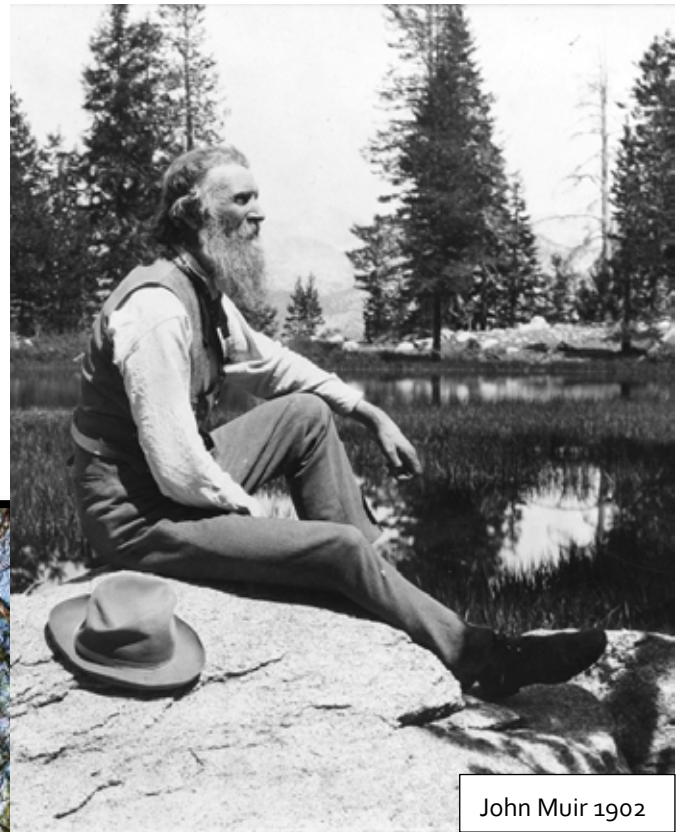
*Totals may not add due to rounding thru report

Leading Crops



John Muir National Historic Site

John Muir National Historic site is located in Martinez. The site preserves Muir's house and 325 acres that were part of the original 2,600-acre fruit ranch owned by the Strentzel/Muir family. John Muir managed the ranch for ten years with his father in law Dr. John Strentzel. Muir experimented with fruits by grafting and creating new varieties that matured in both early and late seasons. Muir understood that being first and last to market was most financially advantageous. He was able to convince the railroad to build a station on the Strentzel ranch to increase efficiency of getting fruit to market.



John Muir 1902

John Muir is known as the "Father of Our National Park System". In 1890, he was largely responsible for the act of Congress that created Yosemite National Park. He was also very involved in the creation of Sequoia, Mount Rainer, Petrified Forest, and Grand Canyon National Parks. In 1903, Muir and President Theodore Roosevelt journeyed into Yosemite and planned Roosevelt's groundbreaking and pioneering conservation programs.



Muir's Home Today



Contra Costa County Historical Society

Muir's Home 1900

The proposed action of damming the Hetch Hetchy Valley within Yosemite National Park was one of the biggest battles Muir and the Sierra Club fought. The proposed damming was to provide water for a growing San Francisco. In 1913, the battle was lost and the reservoir was built. Muir was co-founder of the Sierra Club and the first president until his death in 1914.

February

2021

Sunday	Monday	Tuesday	Wednesday	Thursday	Friday	Saturday
	1	2	3	4	5	6
		Groundhog Day				
7	8	9	10	11	12	13
Super Bowl					Lincoln's Birthday	
14	15	16	17	18	19	20
Valentine's Day	Offices Closed Washington's Birthday President's Day					
21	22	23	24	25	26	27



Production Summary

Category	Gross Value		Change in Gross Value	Total Cultivated Acreage		Change in Acreage	Ranking	
	2019	2018	%	2019	2018	%	2019	2018
Vegetable & Seed Crops	\$37,226,000	\$36,607,000	2%	7,125	7,224	-1%	1	1
Fruit & Nut Crops ¹	\$23,612,000	\$22,363,000	6%	4,469	4,250	2%	2	3
Livestock & Livestock Products	\$22,069,000	\$22,997,000	-4%	n/a	n/a	n/a	3	2
Field Crops ¹	\$12,618,000	\$12,181,000	4%	173,923	175,557	3%	4	4
Nursery Products	\$10,426,000	\$10,459,000	0%	14	24	-44%	5	5
Total¹	\$105,951,000	\$104,607,000	1%	---	---	---	---	---

¹ Correction in 2018 Statistics created new totals

Moraga

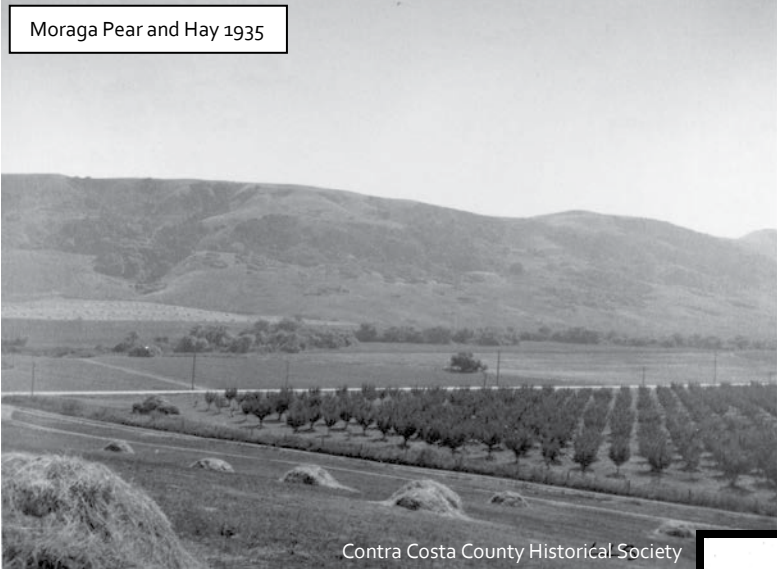
There is a pear tree in Moraga that was planted at the turn of the 20th century. It has five trunks and was declared a "Heritage Tree" by the Moraga Historical Society. Some of these pear trees are next to the Joaquin Moraga Middle school today. These trees are still producing despite being over a hundred years old. E.M. Rice, a manager at the Moraga Company, in 1929 wrote to the University of California, College of Agriculture and asked how long the trees would continue to produce fruit.



Rancho Moraga Pear Packing 1920

Contra Costa County Historical Society

Moraga Pear and Hay 1935



Contra Costa County Historical Society

He was told that if they were properly cared for they could produce for a couple of centuries. James Irvine, owner of the Moraga Company, planted Bartlett pears in 1913 in much of Moraga. In 1923, the pears from these trees were shipped out of Moraga to the East Coast or to Oakland for canning. They had the reputation of being the best in the state of California. Today, the town of Moraga has an annual Wine and Pear festival to honor these roots every fall.

Lafayette

Elam Brown was one of the first people to settle in present day Lafayette. Brown bought the 3,329-acre Mexican land grant known as Rancho Acalanus. He sold 300 acres to his neighbor Nathaniel Jones, who would become Contra Costa County's first sheriff. Brown and Jones would raise everything from wheat and barley to cattle, horses, and sheep. Brown established a horse drawn gristmill in Lafayette and did away with the ten-day time-consuming trip to the mill in San Jose.



Rowland Ranch Hay Stacking 1898

Contra Costa County Historical Society



Contra Costa County Historical Society

Sullivan Ranch Haying



Cattle Brands
(above)
Registered to
Elam Brown and
Nathaniel Jones



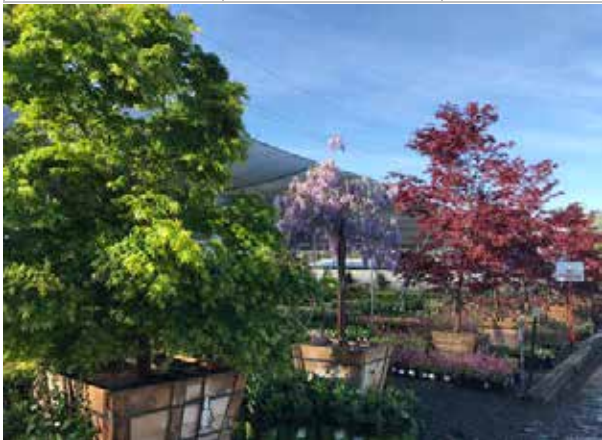
Contra Costa County Historical Society

One of the original Elam Brown gristmill stones (above). Present today in the Lafayette Plaza.

March

2021

Sunday	Monday	Tuesday	Wednesday	Thursday	Friday	Saturday
	1	2	3	4	5	6
7	8	9	10	11	12	13
14	15	16	17	18	19	20
Daylight Savings Begins			St. Patrick's Day			Spring Equinox
21	22	23	24	25	26	27
28	29	30	31			
			Caesar Chavez Day			



Nursery Production

Commodity	Year	Production	Total Value
Nursery Products ¹	2019	14.19 acres	\$10,426,000
	2018	24.80 acres	\$10,460,000
Total	2019	14.19 acres	\$10,426,000
	2018	24.80 acres	\$10,460,000

¹ Includes Bedding Plants, Christmas Trees, Ground Covers, Propagative Materials, Ornamental Tree & Shrubs, Fruit Trees, Cut Flowers.





Almonds – 1900's

East Contra Costa Historical Society

Knightsen

George W. Knight, for who Knightsen was named after, developed and began to propagate a new type of almond known as the "Klondike" in 1894. Knight took this nut to the St. Louis World Fair in 1904. After the exposition, the nut and trees became more widespread and was planted throughout the Sacramento Valley. The Klondike, along with the I.X.L, which it is frequently mistaken for, is grown in Contra Costa today.

East Contra Costa County has had a very diverse agriculture history. The San Joaquin Delta has played a large part in the diversity of East Contra Costa County. The soil, easy access to clean water, and an ingress to the delta for shipping was an advantage to farmers and ranchers; they grew hundreds of acres of potatoes, white celery, and asparagus that were highly sought after on the East Coast.



Contra Costa County Historical Society

H.P. Garin Lettuce Harvest



Picking Cherries – Brentwood 1920

East Contra Costa Historical Society

Other crops that were grown in the East County included Cherries, Walnuts, Olives, Grapes, Lettuce, Corn, Alfalfa, Wheat, Barley, and Oats. Many of these crops are still grown in East County today and available on U-Pick farms and at certified farmer's markets.



East Contra Costa Historical Society

Planting Crops by Hand – Brentwood 1930

April

2021

Sunday	Monday	Tuesday	Wednesday	Thursday	Friday	Saturday
				1	2	3
				April Fool's Day		
4	5	6	7	8	9	10
Easter						
11	12	13	14	15	16	17
				Tax Day		
18	19	20	21	22	23	24
			Administrative Professional's Day	Earth Day		
25	26	27	28	29	30	

Fruit & Nut Crops

Crop	Year	Harvested Acreage	Production Per Acre	Harvested Tons	Value Per Ton	Total Value
Apricots	2019	167	2.72 tons	454	\$3,451	\$1,566,000
	2018	75	2.58 tons	193	\$3,539	\$683,000
Cherries	2019	977	1.77 tons	1,730	\$3,666	\$6,342,000
	2018	880	.94 tons	823	\$5,320	\$4,380,000
Grapes	2019	2,136	5.49 tons	11,700	\$809	\$9,470,000
	2018	2,437	5.30 tons	12,900	\$897	\$11,582,000
Nectarines	2019	32	4.41 tons	140	\$3,228	\$452,000
	2018	25	4.28 tons	107	\$3,143	\$336,000
Olives	2019	173	3.01 tons	519	\$906	\$470,000
	2018	151	2.45 tons	370	\$860	\$318,000
Peaches	2019	122	5.00 tons	609	\$3,068	\$1,868,000
	2018	111	4.70 tons	522	\$2,978	\$1,554,000
Plums & Pluots	2019	47	3.58 tons	169	\$2,734	\$462,000
	2018	35	5.66 tons	198	\$2,644	\$524,000
Walnuts	2019	492	1.76 tons	866	\$1,920	\$1,663,000
	2018	451	1.95 tons	878	\$1,552	\$1,363,000
Miscellaneous ¹	2019	428	Various	Various	Various	\$2,088,000
	2018 ²	204				\$1,612,000
Total	2019	4,574				\$24,381,000

¹ Includes almonds, apples, apriums, Asian pears, berries, citrus, figs, loquats, melons, pears, pecans, persimmons, pistachios, prunes, pomegranates, quinces and strawberries.

² Correction in 2018 Statistics created new totals



NET WT. 36 LB. POIDS NET 16.3 kg

PRODUCE OF U.S.A. U.S. NO. 1 JUICE
PRODUIT DES E.-U. NO. 1 A JUS

NON-IRRIGATED **FRANK D. EVANGELHO** NON-ARROSE
1840 East 18th Street Antioch, California 94509

QUALITY JUICE GRAPES
RAISONS À JUS
DE HAUTE QUALITÉ

VARIETY VARIÉTÉ

Brentwood Aces BRAND

CALIFORNIA FRUIT EXCHANGE
BRENTWOOD, CALIFORNIA

PRODUCE OF U.S.A.

CLIFTON COURT BRAND
GREEN ASPARAGUS

GROWN & PACKED BY
A. S. FERGUSON
CLIFTON COURT, BYRON, CALIFORNIA

MINIMUM WEIGHT 30 LBS.

ARBOR BRAND

FORMERLY KNOWN AS ARBOR STATION
DIABLO VALLEY

DeMARTINI BROS.
BRENTWOOD, CALIFORNIA

CARIGNANE
NET WEIGHT 24 LBS.

B-LINE BRAND

DISTRIBUTED BY
HAROLD BLOOMFIELD
BRENTWOOD, CALIFORNIA
BRIDGEHEAD - OAKLEY DISTRICT

HETCH-HETCHY BRAND

GROWN BY
P. & P. BANCROFT
CONTRA COSTA COUNTY, CALIF.

PRODUCE OF U.S.A.
MINIMUM NET WEIGHT 46 LBS.

CALIFORNIA BARTLETT'S

LUGANO BRAND

COMARCA

G. CONTINENTE
MAIN OFFICE
OAKLEY, CALIF. 94561

Producers of QUALITY GRAPES since 1915

PRODUCE OF U.S.A.

CONTINENTE
Apricots ABRICOTS

PRODUCE OF U.S.A.
PRODUIT DES ETATS-UNIS

JOHN A. CONTINENTE, OAKLEY, CALIFORNIA 94561

NET WT. 24 LBS.
POIDS NET 10.9 KG.

B-LINE TOMATOES

Distributed by *HAROLD BLOOMFIELD Brentwood, Calif.*

PRODUCE OF U.S.A.

Roper BRAND

NET WEIGHT 30 LBS.
WHEN PACKED

PACKED & SHIPPED BY
H-D-ROPER
ANTIOCH, CALIFORNIA

G. SPINELLI & SONS

NON-IRRIGATED

GROWER-SHIPPER
G. SPINELLI
RT. 2, BOX 243
BRENTWOOD, CA 94513

OAKLEY JUICE GRAPES
RAISONS À JUS

PRODUCE OF U.S.A.
U.S. NO. 1 JUICE
PRODUIT DES E.-U.
E.-U. NO. 1 A JUS

NET WEIGHT/POIDS NET
36 lb/16.3 kg

May

2021

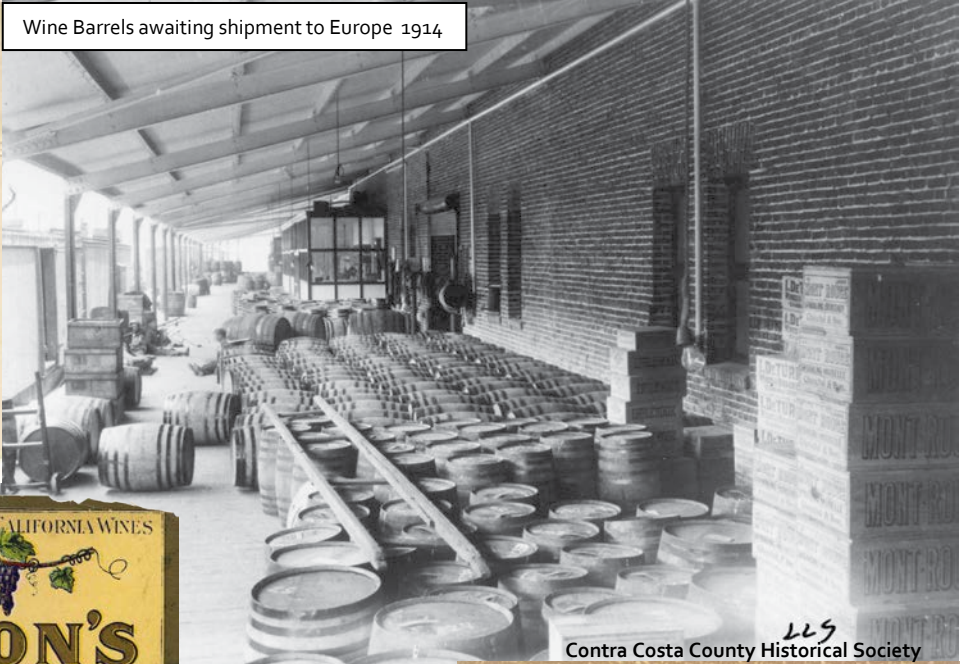
Sunday	Monday	Tuesday	Wednesday	Thursday	Friday	Saturday
						1 May Day
2	3	4	5 Cinco de Mayo	6	7	8
9 Mother's Day	10	11	12	13	14	15 Armed Forces Day
16	17	18	19	20	21	22
23	24	25	26	27	28	29
30	31 Offices Closed Memorial Day	U-Pick Farms  http://harvest4you.com				

Share your agricultural pictures with us at agcommissioner@ag.cccounty.us

This year for the 2019 annual crop report, the Contra Costa Agriculture Department decided to highlight some of the historical features and times of our county. This report was made possible with help from the Contra Costa County Historical Society, East Contra Costa Historical Society, Walnut Creek Historical Society, John Muir National Historic Site, Moraga Historical Society, Lafayette Historical Society, Point Richmond History Association, Martinez Historical Society, San Ramon Historical Society, and Steve Verduzco with Our Town Brentwood Ca Facebook page. The historical societies and sites are all available to visit in person and online. They are a wealth of knowledge about the history and ever changing events that make up our county. We would like to thank them all for the help that they provided.

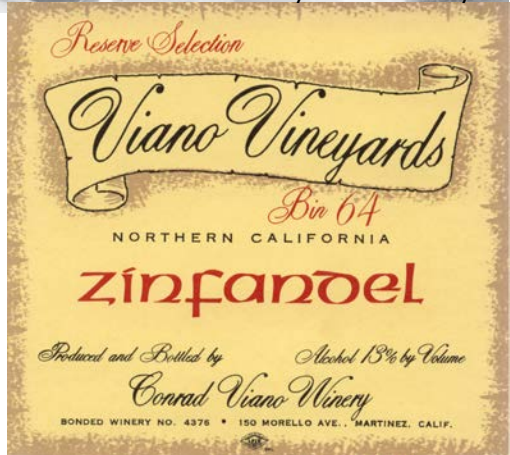
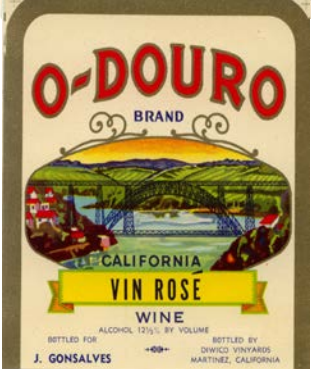


Wine Barrels awaiting shipment to Europe 1914



LLS

Contra Costa County Historical Society



Winehaven is located on San Pablo Peninsula in Richmond. The California Wine Association moved its headquarters to Point Molate after the devastation caused by the 1906 San Francisco earthquake. Winehaven was the "World's Largest Winery" for 12 years until 1920 when prohibition was enacted. California Wine Association shipped all their production out of the Winehaven docks; this includes shipments to the east and west coasts, New York Markets, and abroad. The capacity for the dock was 500,000 gallons a month; this included 40 ships a year bound for New York. Annual production for the winery was 10 -12 million gallons a year. The winery produced wines using 67 different varieties of grapes from over 40 vineyards. Winehaven sat empty after prohibition until 1941 when the US Navy bought the property for use as a refueling depot. In 1978, it was registered as a US National Historic Place. The US Government returned the property back to Richmond in 1995. Today this site is operated as the Point Molate Beach Park and is a city owned park, which is open to the public.

Winehaven Facilities 1908



LLS

Contra Costa County Historical Society



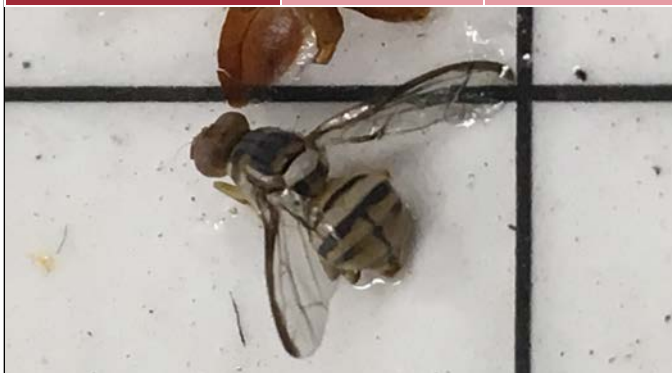
June

2021

Sunday	Monday	Tuesday	Wednesday	Thursday	Friday	Saturday
		1	2	3	4	5
6	7	8	9	10	11	12
D-Day						
13	14	15	16	17	18	19
	Flag Day					
20	21	22	23	24	25	26
Father's Day Summer Solstice						
27	28	29	30			

Pest Detection

Insect Pest	Total No. of Traps	Total Trap Servicing's	Insect Pest	Total No. of Traps	Total Trap Servicing's
Asian Citrus Psyllid	864	14,496	Japanese Beetle	590	4,099
European Grapevine Moth	123	1,617	Mediterranean Fruit Fly	894	14,620
General Fruit Fly	815	34,440	Melon Fly	788	9,509
Glassy-Winged Sharpshooter	864	8,865	Oriental Fruit Fly	894	18,028
Gypsy Moth	604	4,016			

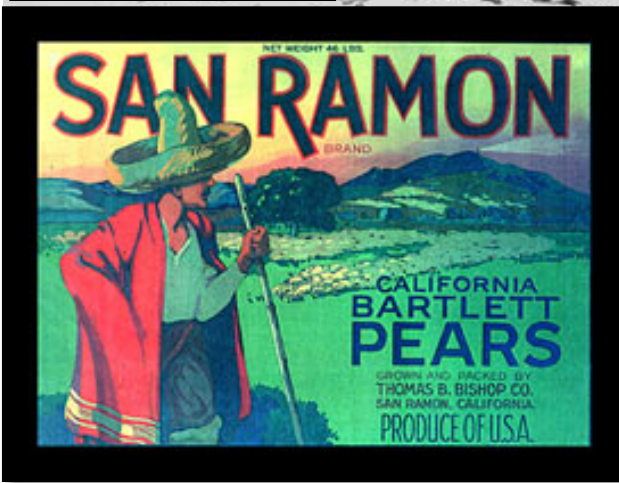




Bishop Ranch Pear Picking 1900

BISHOP RANCH

Attorney Thomas Bishop was paid for his services in the separation of Mr. & Mrs. Norris in 1891, by receiving 960 acres of land in the San Ramon Valley. He grazed cattle and planted hay and grains. The Bishop family grew the ranch to two thousand acres over the next several decades. They diversified to pear trees, walnut groves, and purebred Shropshire sheep.



The Bartlett pear orchard was planted in 1911 and by 1940 grew to be recognized as the single largest in the world. The purebred Shropshire sheep that were raised on the ranch won innumerable awards.



Boone Ranch & Forest Hill Farms

Numa Boone was a second-generation farmer in the San Ramon Valley. He owned a 250-acre ranch and leased a ranch with an additional 700 acres on which he planted wheat and diversified into walnuts, dates, and other fruit. His son, Travis Boone with his wife Ruth Quayle Boone took over the ranch. Travis invented several items. He designed portable towers for knocking walnuts and picking dates. To knock walnuts you need a heavy-duty pole to beat the branches and knock the nuts loose. He also invented the most successful dehydrator in the industry. Ruth ran an "all ladies" picking crew through the Great Depression and years afterwards.



Hay Press San Ramon

Ruth died in 1998, when she was 94. She donated her 22-room, 1900 Dutch colonial home and the 16-acre family farm to the City of San Ramon. The farm includes a three story 1930's walnut processing plant with 16 barns, outbuildings, and a windmill. You can visit this park, which includes Forest Home Farms, sheep shearing, working dog, and historical tractor demonstrations. Take a tour and step back in time.

July

2021

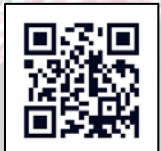
Sunday	Monday	Tuesday	Wednesday	Thursday	Friday	Saturday
				1	2	3
4	5	6	7	8	9	10
Independence Day	Offices Closed					
11	12	13	14	15	16	17
18	19	20	21	22	23	24
25	26	27	28	29	30	31

Certified Farmers' Markets (CFM)

In 2019, Contra Costa County Agricultural Department registered 22 farmers' markets; issued 47 Certified Producer's Certificates and conducted 51 certified market inspections.

2021 Currently operating Farmers' Markets in Contra Costa County:

CFM Name / Location	Day	CFM Name / Location	Day
Alamo	Sun	Orinda	Sat
Antioch Kaiser	Thu	Pinole	Sat
Brentwood	Sat	Pittsburg	Sat
Concord	Tue + Thu	Richmond	Fri
Danville	Sat	Rossmoor	Fri
Diablo Valley Shadelands	Sat	San Ramon Bishop Ranch 2	Sat
El Cerrito	Tue + Sat	San Ramon Bishop Ranch 3	Thu
Kensington	Sun	Walnut Creek Kaiser	Tue
Martinez	Sun	Walnut Creek	Sun
Moraga	Sun		





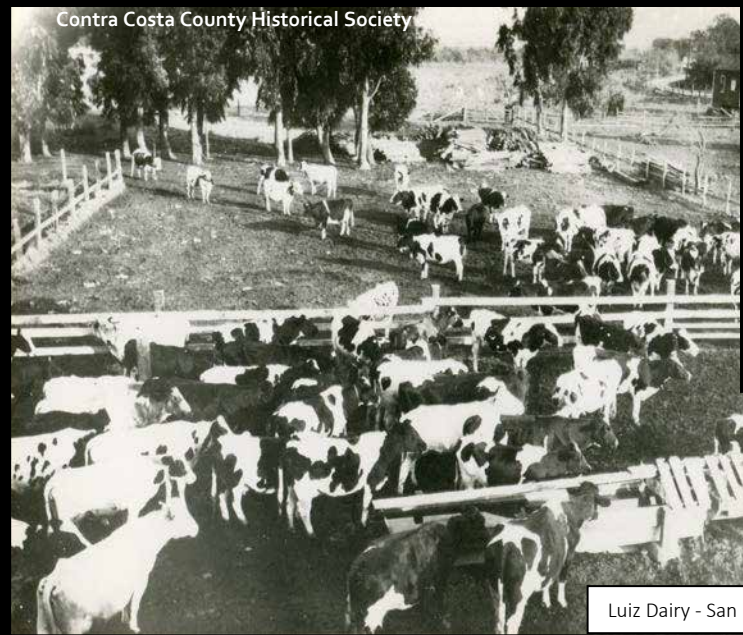
Wiedemann Ranch – San Ramon 1932

Contra Costa County Historical Society

In 1924, California saw a catastrophic epidemic of hoof and mouth disease in the cattle, sheep, pig, and deer populations. All the ranches in the state were quarantined. Other States and Countries had stopped importing meat and other products including vegetables from California. Arizona closed their borders to anyone from California and it took President Coolidge to get it reopened. Contra Costa was one of the hardest hit counties in the state. This disease hit almost every ranch and some lost all of their stock completely. The main duration of this disease epidemic lasted from February to October of 1924, and was estimated to cost millions of dollars.

Contra Costa County Historical Society

Cattle Drive –Pittsburg 1910



Contra Costa County Historical Society

Luiz Dairy - San Pablo

Hinds Dairy – El Cerrito



Contra Costa County Historical Society



Milk Shipment - Knightsen

East Contra Costa Historical Society

Dairy farmers in the Knightsen area shipped by railcar on average 2,500 gallons of milk a day in 1917. The six main dairy farmers in the area were Fox, Stone Brothers, Bridgeford, Burroughs Brothers, Hotchkiss, and Emerson. The Emerson Dairy was the last of these to close in the early 2000's. Part of this property is now being developed into residential housing.

August

2021

Sunday	Monday	Tuesday	Wednesday	Thursday	Friday	Saturday
1	2	3	4	5	6	7
8	9	10	11	12	13	14
15	16	17	18	19	20	21
22	23	24	25	26	27	28
29	30	31				



Livestock & Livestock Products

Commodity	Year	Number of Head	Total Live Weight	Value Per CWT	Total Value
Cattle & Calves	2019	17,523	145,000 lbs.	\$140	\$20,326,000
	2018	18,579	165,335 lbs.	\$129	\$21,376,000
Apiary Products ¹	2019	n/a	n/a	n/a	\$967,000
	2018	n/a	n/a	n/a	\$845,000
Misc. Livestock ²	2019	n/a	n/a	n/a	\$776,000
	2018	n/a	n/a	n/a	\$776,000
Total	2019				\$22,069,000
	2018				\$22,997,000

¹ Includes honey, wax and pollination.

² Includes chickens, ducks, emus, goats, hogs, llamas, ostriches, pigs, rabbits, sheep, turkeys, milk, wool, and eggs.

Apiary Registration & Pesticide Notification

Contra Costa County welcomes all beekeepers and pesticide applicators to participate in the new BeeWhere program. BeeWhere allows beekeepers to complete their county registration obligations online and helps communicate bee movement to our department with a simple pin drop on a map. Annual apiary registration and bee movement notice is required under California law.



Marking and Branding Inspections

Our inspectors survey the county for unmarked and unregistered apiaries year-round. Beekeepers are required to identify their name, address and phone number when bees are not at their residence. The markings are stenciled directly on the hives or displayed on a sign at the entrance in dark letters not less than one inch in height. They also perform serial brand number inspections in the effort to reduce hive theft. Beekeepers may only be in possession of apiary equipment that is branded; that he or she owns or has obtained through legal transfer. To obtain a serial brand number, contact our department.



Beekeepers are encouraged to receive pesticide notifications from agricultural applicators intending to apply a pesticide toxic to bees to flowering crops. California law requires pesticide applicators to provide a 48-hour notice to the beekeeper prior to performing such an application. Pesticide applicators receive beekeeper contact information when they perform a Beecheck. Visit <https://beewhere.calagpermits.org/> to get started.

September

2021

Sunday	Monday	Tuesday	Wednesday	Thursday	Friday	Saturday
			1	2	3	4
5	6 Offices Closed Labor Day	7	8	9	10	11 Patriot Day
12 Grandparent's Day	13	14	15	16	17	18
19	20	21	22	23	24	25
			Fall Equinox			
26	27	28	29	30		

Pest Management

Weed Pest	Sites Surveyed	Acres Treated	Acres Surveyed	Control Method
Artichoke Thistle	36	29	36,865	Chemical
Purple Starthistle	23	4	5,405	Chemical
Red Sesbania	1	5	5	Manual



Pest Exclusion

Post Office/UPS/FedEx – Package Inspections	10,576
Truck Shipment Inspections from within California	1,901
Truck Shipment Inspections from other States	625
Household Goods Inspections for Gypsy Moth	34
Canine Detection Non-native Pest Interceptions ¹	11
Quarantine Pest, Certification and Markings Rejections	118

¹ Interceptions in Contra Costa, San Joaquin, Santa Clara, and Yolo Counties

C and H Sugars
 ReFinery at Crockett, California
 Largest in the world

Contra Costa County Historical Society



C & H Refinery 1940

During Prohibition C & H had "Juice Making" kits (picture below) for people who wanted to try their hand at bootlegging.



Contra Costa County Historical Society

In 1902, Loren Lasell bought 300 acres on upper Alhambra Valley Road. He used a 2 inch galvanized pipe to transport spring water to the bottling plant in downtown Martinez, creating Alhambra Water Company. The business grew to include glass lined railcars to transport water to Oakland and San Francisco where it was bottled and distributed.

Alhambra Water - Martinez



Contra Costa County Historical Society

California and Hawaii Sugar Company, known as C & H, was founded in Crockett in 1906. The refinery was created as an agricultural co-operative with the sugar cane growers in Hawaii. The Carquinez Strait shipping channel made a perfect place to off load sugar and molasses. The C & H Refinery was once the largest in the world. It produced all the sugar for the United States west of the Mississippi River. C & H was sold to American Sugar Refining in 2006 and continues to operate today.

Contra Costa County Historical Society



C & H Refinery 1900

The refinery produces 750,000 metric tons of sugar annually. Unfortunately, the last load of Hawaii sugar was off loaded in 2017 due to the Hawaii sugar mills closing. To learn more, visit the Crockett Historical Museum. Today Crockett hosts the Sugartown Festival and Sweet Fair in July.



Contra Costa County Historical Society

Alhambra Water - San Francisco

In 1945, the National Water Company acquired Alhambra Water Company of San Francisco. Shortly thereafter, the name was changed to Alhambra National Water. Today it provides a variety of water products to establishments throughout the Bay Area in such locales as San Francisco, Santa Rosa, Vallejo, Santa Clara, Milpitas, and Union City as well as in Central Valley communities such as Sacramento, Chico, Manteca, Stockton, and Fresno.

October

2021

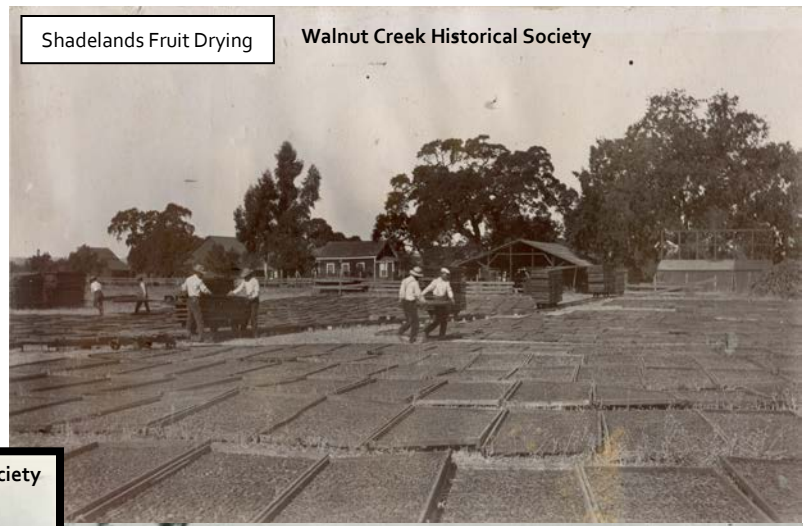
Sunday	Monday	Tuesday	Wednesday	Thursday	Friday	Saturday
					1	2
3	4	5	6	7	8	9
10	11	12	13	14	15	16
17	18	19	20	21	22	23
24	25	26	27	28	29	30
United Nations Day 31						
Halloween						

Vegetable & Seed Crops

Crop	Year	Harvested Acreage	Production Per Acre	Tons Harvested	Value Per Ton	Total Value	
Tomatoes ¹	2019	2,925	63.00 tons	184,000	60.00	\$10,977,000	¹ Includes fresh and processing tomatoes. ² Includes asparagus, artichokes, beets, broccoli, cabbage, cardoon, carrots, cauliflower, cucumbers, eggplant, garlic, ginseng, green beans, greens, herbs, kohlrabi, lettuce, melons, mushrooms, okra, onions, peas, peppers, potatoes, pumpkins, radishes, squash, and wheat grass. ³ Correction in 2018 Statistics created new totals
	2018	3,581	60.00 tons	215,000	72.00	\$15,412,000	
Sweet Corn	2019	3,484	9.90 tons	34,500	\$587	\$20,247,000	
	2018 ³	2,977	10.60 tons	31,500	\$535	\$16,900,000	
Misc. ²	2019	715	various	various	various	\$6,002,000	
	2018	666				\$4,297,000	
Total	2019	7,125				\$37,226,000	
	2018 ³	7,224				\$36,609,000	

Shadelands Fruit Farm

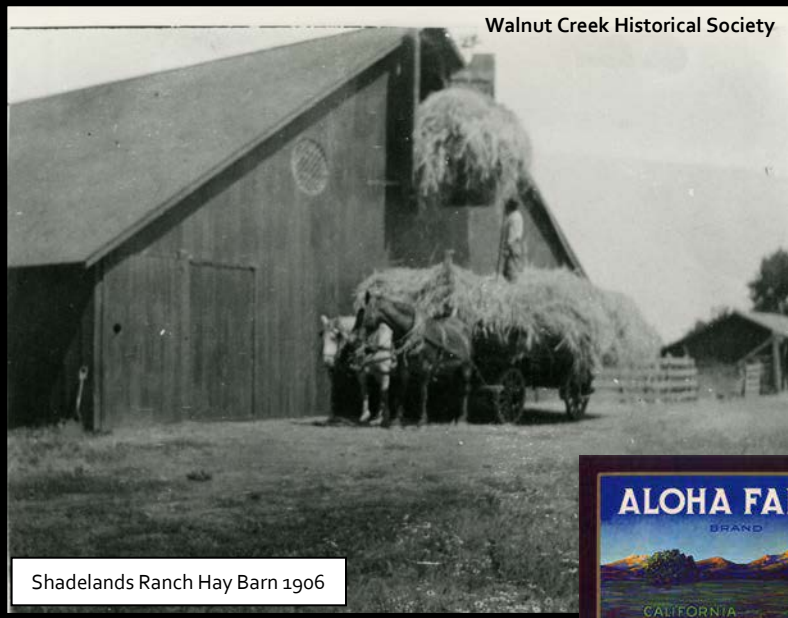
Hiram Penniman and his brother in law established the Shadelands ranch in 1852, as a fruit farm on 370 acres of land. In 1903, Hiram Penniman built the home that now houses the Shadelands Ranch Historical Museum. Hiram is also credited with creating the initial layout of Walnut Creek, which the town still uses today. Shadelands was listed on the National Register of Historic Places in 1985 and is run today by the city of Walnut Creek. The Shadelands Ranch is open today for visitors.



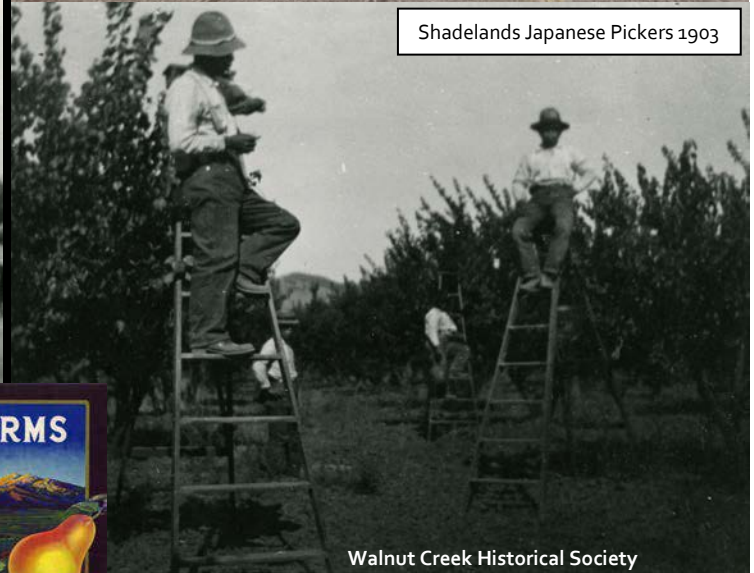
Shadelands Fruit Drying

Walnut Creek Historical Society

Walnut Creek Historical Society

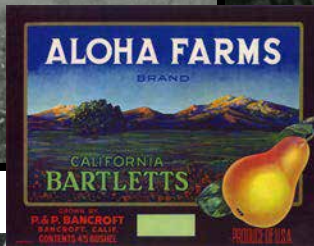


Shadelands Ranch Hay Barn 1906



Shadelands Japanese Pickers 1903

Walnut Creek Historical Society



Bancroft Ranch "Aloha Farms"

Apricot cutting at Bancroft Ranch 1917

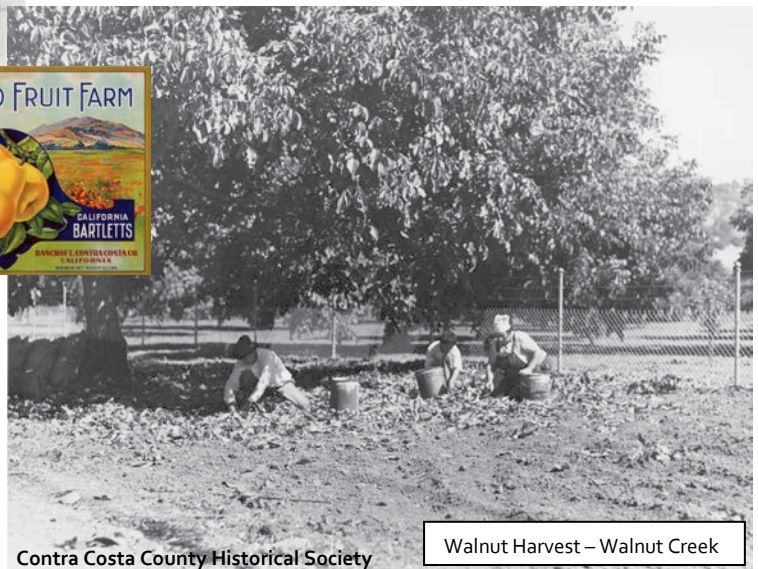


Contra Costa County Historical Society



Albert L. Bancroft was a successful book publisher and seller in San Francisco. He and his wife Fannie A. Bancroft bought 183 acres in the Ygnacio Valley and started the Bancroft Ranch. Fannie took control of the agricultural, horticultural and management decisions. You can visit Ruth Bancroft Garden today and see the outstanding landscape of dry-growing plants.

The Bancroft's grew the ranch to 600 acres; Mrs. Bancroft named the ranch "Aloha Farms". The ranch was the second commercial orchard in the Ygnacio Valley and the first in the valley to have an irrigation system. In 1916 the ranch was producing 22,000 boxes of fruit that were shipped to the east coast and overseas. They grew pears, peaches, apricots, French prunes, and almonds.



Contra Costa County Historical Society

Walnut Harvest - Walnut Creek

November

2021

Sunday	Monday	Tuesday	Wednesday	Thursday	Friday	Saturday
	1	2	3	4	5	6
		Election Day				
7	8	9	10	11	12	13
Daylight Savings Ends				Offices Closed Veterans Day		
14	15	16	17	18	19	20
21	22	23	24	25	26	27
				Offices Closed Thanksgiving Day	Offices Closed	
28	29	30				

Field Crops

Crop	Year	Harvested Acreage	Production Per Acre	Tons Harvested	Unit	Value Per Unit	Total Value
Alfalfa Hay	2019	3,642	3.88	14,100	Ton	\$184.00	\$2,594,000
	2018 ²	1,941	4.41	8,559		\$197.00	\$1,686,000
Cereal Hay	2019	3,919	1.88	7,370	Ton	\$120.00	\$884,000
	2018 ²	2,548	4.07	10,400		\$94.00	\$978,000
Irrigated Pasture	2019	5,450	n/a	n/a	Acre	\$300.00	\$1,635,000
	2018	5,450				\$300.00	\$1,635,000
Rangeland	2019	149,000	n/a	n/a	Acre	\$18.00	\$2,682,000
	2018	149,000				\$22.00	\$3,278,000
Wheat	2019	2,989	1.90	5,680	Ton	\$168.00	\$954,000
	2018	967	1.90	1,840		\$189.00	\$348,000
Misc. ¹	2019	8,924	various	various	var.	various	\$3,879,000
	2018	9,124				various	\$4,262,000
Total	2019	173,924					\$12,628,000
	2018 ²	169,030					\$12,187,000



¹ Includes barley, corn silage, field corn, forage hay, hay (wild), industrial hemp, rye, safflower, silage, straw, Sudan grass, and sorghum.

² Correction in 2018 Statistics created new totals



In 1913, California State Legislature created an Office of State Superintendent of Weights & Measures. County officials then began a more active role in helping the State by inspecting and sealing weight scales and measurement devices. The Weighmasters Act of 1915 arranged for licensing and oversight of people who were weighting commodities for hire.



The Department of Agriculture was restructured in 1921 to include the Department of Weights and Measures. This included railroad track scales and devices used for commerce, in the medical field, and at prisons. At the time, the inspection of railroad scales was predominantly because the railroad tariffs were based on weight or measurement for the commodity being shipped. Test railcars were provided by the National Bureau of Standards. They contained 80,000 pounds of known weight used for tolerance testing. Tests done in 1920 proved that 52.4% of railroad scales in California were out of tolerance. When retested in 1921, all scales were found to be in tolerance.



December

2021

Sunday	Monday	Tuesday	Wednesday	Thursday	Friday	Saturday
			1	2	3	4 Grower Continuing Education Meeting
5	6	7 Pearl Harbor Remembrance	8 Grower Continuing Education Meeting	9	10	11
12	13	14	15	16	17	18
19	20	21 Winter Solstice	22	23	24 Christmas Eve Offices Closed	25 Christmas Day
26	27	28	29	30	31 New Year's Eve	

Weights & Measures

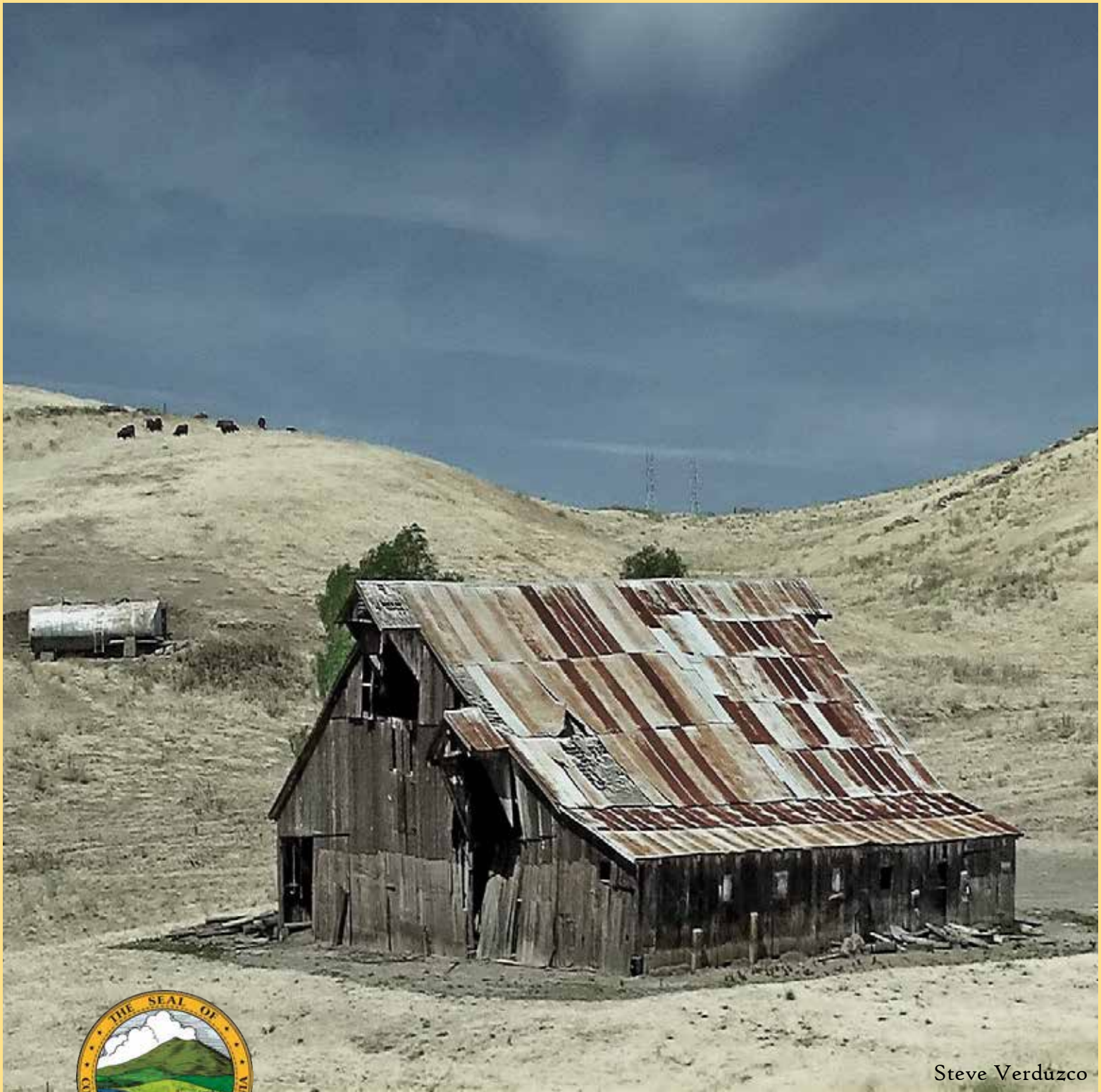
The Contra Costa County Division of Weights and Measures promotes a fair and equitable marketplace by performing inspections of retail packages and commercial weighing and measuring devices. These efforts certify that the sales of harvested crop, livestock, animal feed, vehicle fuel, and other commodities are based on a precise weight or measure. Contra Costa County has over 37,000 commercial devices that require testing. Over 19,000 devices need to be tested annually. Another 18,000 are tested less frequently per regulations.



Measuring Devices	Commercial Devices
Vehicle Fuel Station Meters	7,875
Electric Sub meters	6,817
Water Meters & Sub meters	7,388
Vapor/LPG Meters & Sub meters	3,888
Taxi Meters	168
Other Measuring Devices	9
Weighing Devices	
Light Capacity Retail Scales	2,079
Heavy Capacity Retail Scales	281
Vehicle/Railway Scales	102
Prescription/Jewelers Scales	38
Livestock/Animal Scales	20
Other Weighing Devices	1
Advertisement & Transaction Verification	Commercial Devices
Petroleum Gas Stations	267
Retail Price Verification	5519
Quality Assurance	Audited
Weighmaster Locations	102
Consumer Complaint Investigations	76



<http://www.co.contra-costa.ca.us/1542/Agriculture-Weights-Measures>



Steve Verdusco



CONTRA COSTA COUNTY

Department of Agriculture Weights & Measures

2380 Bisso Lane Suite A, Concord, CA 94520 TEL (925) 608-6600 FAX (925) 608-6620