

PARCEL MAP

SUBDIVISION MS 18-0006

BEING A PORTION OF LOT 151 OF THE MAP OF MOUNT DIABLO ESTATE PARK SUBDIVISION, FIRST UNIT (15-M-301), CONTRA COSTA COUNTY RECORDS, AND A PORTION OF THE NE 1/4 OF SECTION 22, T. 1 S., R. 1 W., MOUNT DIABLO BASE AND MERIDIAN

CONTRA COSTA COUNTY, CALIFORNIA

DeRoit Civil Engineering
Danville, California 94526

JANUARY 2020 SCALE: 1 in. = 50 ft.

SHOWN AS FOUND SPIKE PER (R5)
LS 4210 PER (R3)
SHOWN AS SET NAIL & TAG

BASIS OF BEARINGS

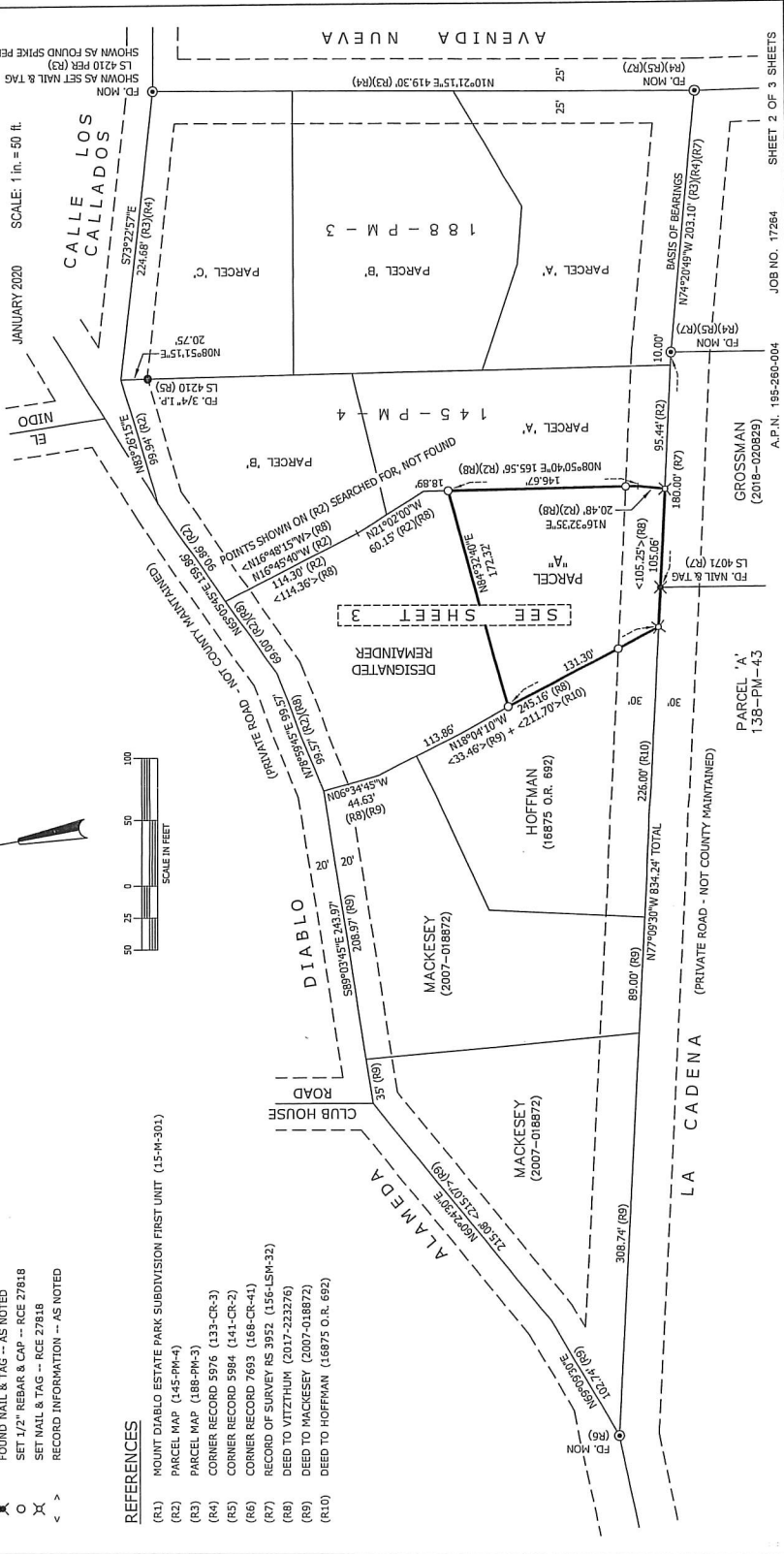
THE CENTERLINE OF LA CADENA, TAKEN AS NORTH 74°20'49" WEST, AS SHOWN ON RECORD OF SURVEY RS-3952 (156-LSM-32). BEARINGS ARE BASED ON THE CALIFORNIA STATE PLANE COORDINATE SYSTEM ZONE 10N (CGS27). ALL DISTANCES SHOWN ARE IN FEET AND DECIMALS THEREOF.

LEGEND

- FOUND STANDARD STREET MONUMENT
- FOUND IRON PIPE -- AS NOTED
- ✕ FOUND NAIL & TAG -- AS NOTED
- SET 1/2" REBAR & CAP -- RCE 27818
- ✕ SET NAIL & TAG -- RCE 27818
- < RECORD INFORMATION -- AS NOTED

REFERENCES

- (R1) MOUNT DIABLO ESTATE PARK SUBDIVISION FIRST UNIT (15-M-301)
- (R2) PARCEL MAP (145-PH-4)
- (R3) PARCEL MAP (188-PH-3)
- (R4) CORNER RECORD 5976 (133-CR-3)
- (R5) CORNER RECORD 5984 (141-CR-2)
- (R6) CORNER RECORD 7693 (166-CR-4)
- (R7) RECORD OF SURVEY RS 3952 (156-LSM-32)
- (R8) DEED TO VITZTHUM (2017-223276)
- (R9) DEED TO MACKESEY (2007-018872)
- (R10) DEED TO HOFFMAN (16875 O.R. 692)



GROSSMAN (2018-020829)

PARCEL 'A'
138-PM-4-3

A.P.N. 185-260-004 JOB NO. 17264

SHEET 2 OF 3 SHEETS

PARCEL MAP

SUBDIVISION MS 18-0006

BEING A PORTION OF LOT 151 OF THE MAP OF MOUNT DIABLO ESTATE PARK SUBDIVISION, FIRST UNIT (15-M-307), CONTRA COSTA COUNTY RECORDS, AND A PORTION OF THE NE 1/4 OF SECTION 22, T. 1 S., R. 1 W., MOUNT DIABLO BASE AND MERIDIAN

CONTRA COSTA COUNTY, CALIFORNIA

DeBolt Civil Engineering
 Danville, California 94526

JANUARY 2020 SCALE: 1 in. = 20 ft.

REFERENCES

- (R1) MOUNT DIABLO ESTATE PARK SUBDIVISION FIRST UNIT (15-M-307)
- (R2) PARCEL MAP (145-PM-4)
- (R3) PARCEL MAP (188-PM-3)
- (R4) CORNER RECORD 5976 (133-CR-3)
- (R5) CORNER RECORD 5984 (141-CR-2)
- (R6) CORNER RECORD 7693 (168-CR-41)
- (R7) RECORD OF SURVEY RS 3952 (156-LSM-32)
- (R8) DEED TO VITZTHUM (2017-223276)

COURSE DATA

- ① N44°06'21"E 27.92'
- ② N44°06'21"E 10.98'

- ⊙ FOUND STANDARD STREET MONUMENT
- ⊗ FOUND NAIL & TAG -- AS NOTED
- ⊙ SET 1/2" REBAR & CAP -- RCE 27818
- ⊙ SET NAIL & TAG -- RCE 27818
- < > RECORD INFORMATION -- AS NOTED
- P.S.D.E. PRIVATE STORM DRAINAGE EASEMENT
- S.N.F. SURVEY POINTS PER (R2) SEARCHED FOR, NOT FOUND

BASIS OF BEARINGS

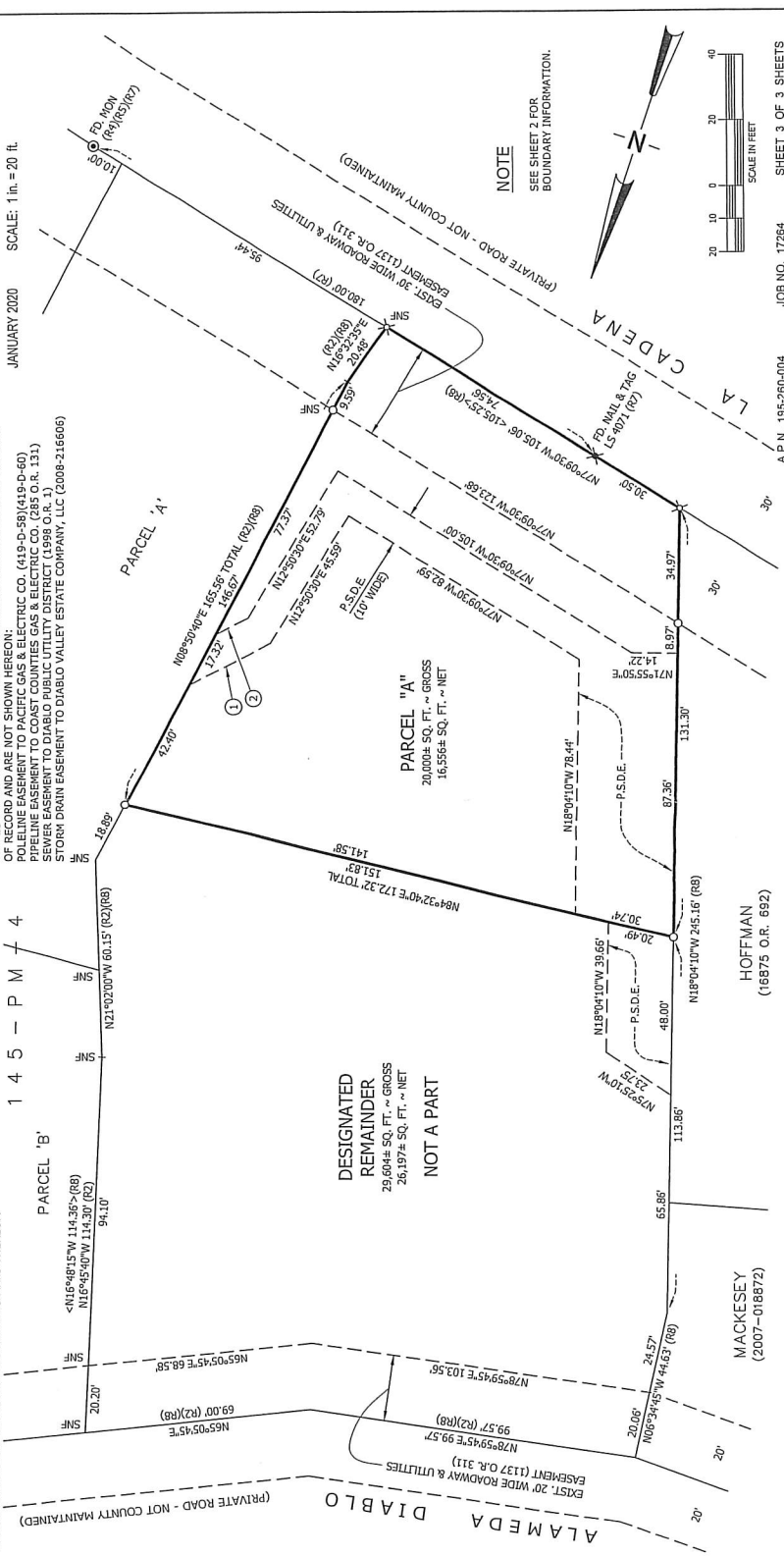
THE CENTERLINE OF LA CADEENA, TAKEN AS NORTH 74°20'49" WEST, AS SHOWN ON RECORD OF SURVEY RS-3952 (156-LSM-32). BEARINGS ARE BASED ON THE CALIFORNIA COORDINATE SYSTEM, ZONE III (CCS-27). ALL DISTANCES SHOWN ARE IN FEET AND DECIMALS THEREOF.

1 4 5 - P M + 4

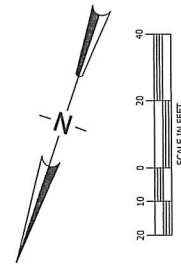
NOTE

THE LOCATION OF THE FOLLOWING EASEMENTS ARE NOT SPECIFICALLY DEFINED ON THIS MAP:

- PIPELINE EASEMENT TO PACIFIC GAS & ELECTRIC CO. (419-D-58)(419-D-60)
- PIPELINE EASEMENT TO COAST COUNTIES GAS & ELECTRIC CO. (285 O.R. 131)
- SEWER EASEMENT TO DIABLO PUBLIC UTILITY DISTRICT (1998 O.R. 1)
- STORM DRAIN EASEMENT TO DIABLO VALLEY ESTATE COMPANY, LLC (2008-216606)



NOTE
 SEE SHEET 2 FOR
 BOUNDARY INFORMATION.



JOB NO. 17284 SHEET 3 OF 3 SHEETS
 A.P.N. 195-260-004