

RANCHO SAN RAMON POR. SEC. 33 T1N R2W

& POR. SEC. 4 T1S R2W M.D.B.&M.

PLEASANT HILL ROAD

OLYMPIC

P.B.  
185

Project site

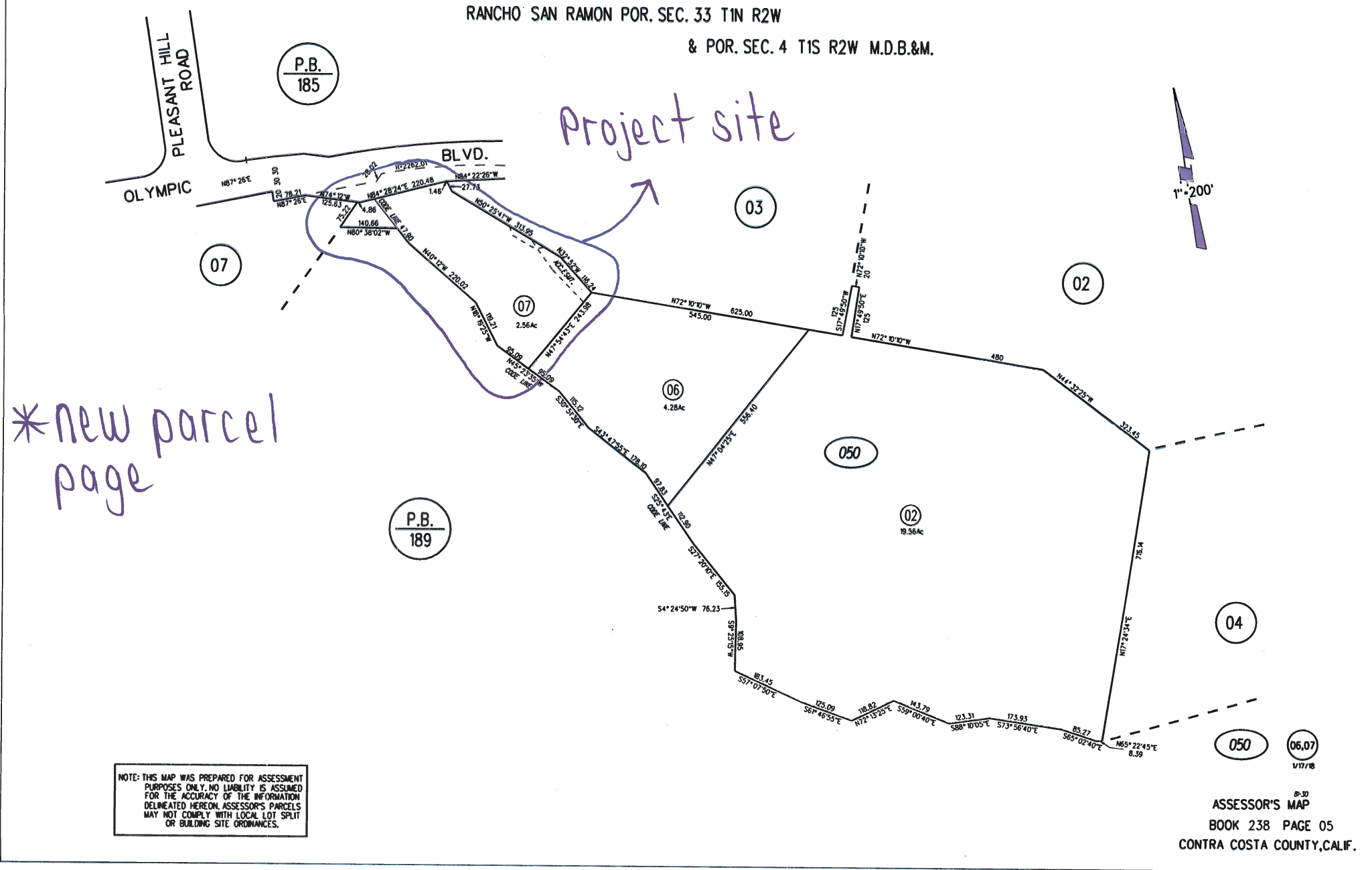


\*new parcel  
page

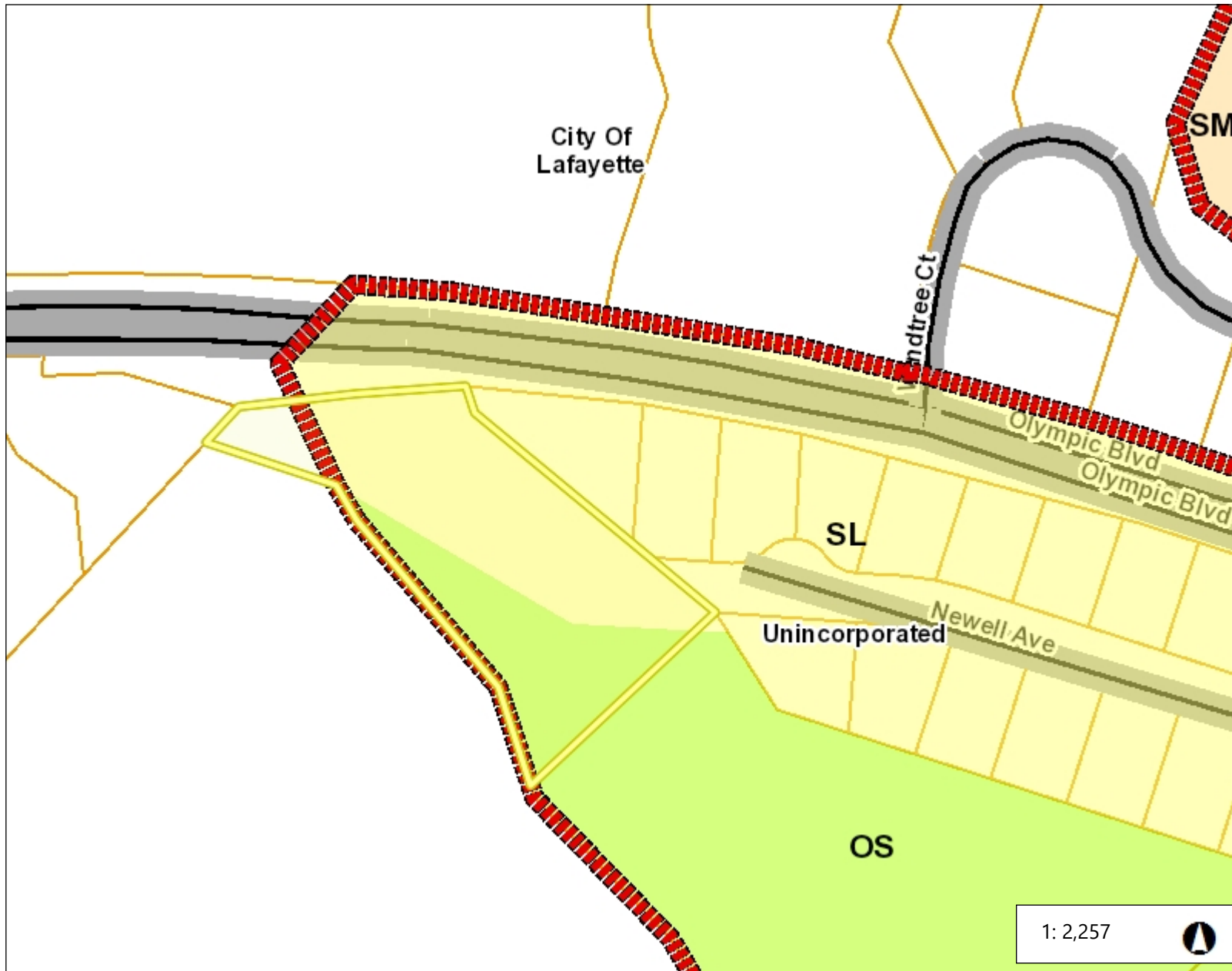
P.B.  
189

NOTE: THIS MAP WAS PREPARED FOR ASSESSMENT PURPOSES ONLY. NO LIABILITY IS ASSUMED FOR THE ACCURACY OF THE INFORMATION DELINEATED HEREON. ASSESSOR'S PARCELS MAY NOT COMPLY WITH LOCAL LOT SPLIT OR BUILDING SITE ORDINANCES.

ASSESSOR'S MAP  
BOOK 238 PAGE 05  
CONTRA COSTA COUNTY, CALIF.



# General Plan: Single-Family Residential – Low Density (SL) and Open Space (OS)



## Legend

- City Limits
- Unincorporated
- General Plan
  - SV (Single Family Residential - Ver
  - SL (Single Family Residential - Low
  - SM (Single Family Residential - Me
  - SH (Single Family Residential - Hig
  - ML (Multiple Family Residential - Lc
  - MM (Multiple Family Residential - Iv
  - MH (Multiple Family Residential - H
  - MV (Multiple Family Residential - V
  - MS (Multiple Family Residential - V
  - CC (Congregate Care/Senior Housi
  - MO (Mobile Home)
  - M-1 (Parker Avenue Mixed Use)
  - M-2 (Downtown/Waterfront Rodeo I
  - M-3 (Pleasant Hill BART Mixed Use
  - M-4 (Willow Pass Road Mixed Use)
  - M-5 (Willow Pass Road Commercia
  - M-6 (Bay Point Residential Mixed U
  - M-7 (Pittsburg/Bay Point BART Sta
  - M-8 (Dougherty Valley Village Cent
  - M-9 (Montalvin Manor Mixed Use)
  - M-10 (Willow Pass Business Park M
  - M-11 (Appian Way Mixed Use)
  - M-12 (Triangle Area Mixed Use)

## Notes

Contra Costa County -DOIT GIS

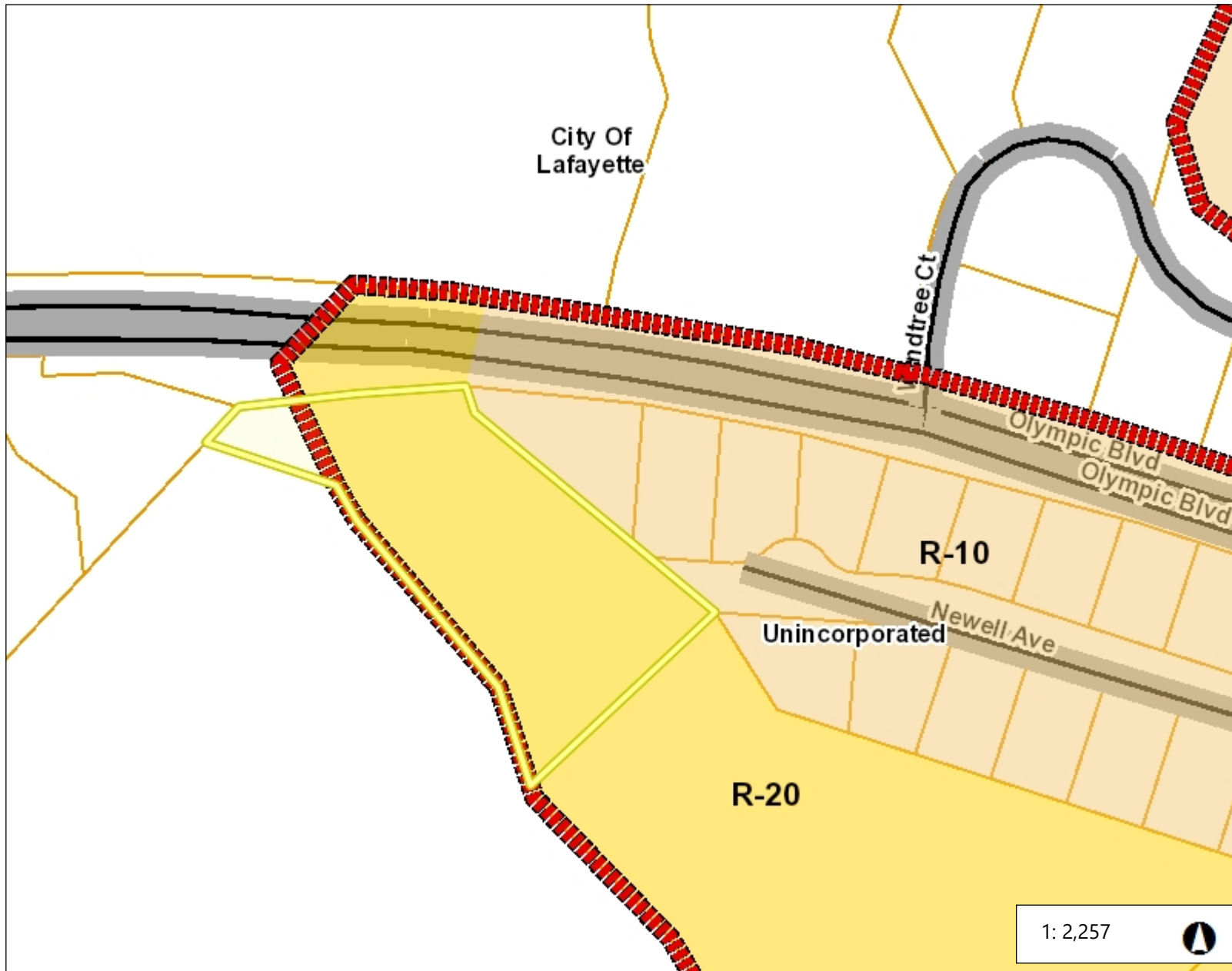
0.1 0 0.04 0.1 Miles

WGS\_1984\_Web\_Mercator\_Auxiliary\_Sphere

This map is a user generated static output from an Internet mapping site and is for reference only. Data layers that appear on this map may or may not be accurate, current, or otherwise reliable.

THIS MAP IS NOT TO BE USED FOR NAVIGATION

# Zoning: Single-Family Residential (R-20)



## Legend



City Limits

Unincorporated

### Zoning

- R-6 (Single Family Residential)
- R-6, -FH -UE (Single Family Resid Urban Farm Animal Exclusion Com
- R-6 -SD-1 (Single Family Resident Hillside Development Combining Di
- R-6 -TOV -K (Single Family Reside View Ordinance and Kensington Cc
- R-6, -UE (Single Family Residential Exclusion Combining District)
- R-6 -X (Single Family Residential - Combining District)
- R-7 (Single Family Residential)
- R-7 -X (Single Family Residential - Combining District)
- R-10 (Single Family Residential)
- R-10, -UE (Single Family Residenti Exclusion Combining District)
- R-12 (Single Family Residential)
- R-15 (Single Family Residential)
- R-20 (Single Family Residential)
- R-20, -UE (Single Family Residenti Exclusion Combining District)
- R-40 (Single Family Residential)
- R-40, -FH -UE (Single Family Resic Urban Farm Animal Exclusion Com
- R-40, -UE (Single Family Residenti Exclusion Combining District)
- R-65 (Single Family Residential)
- R-100 (Single Family Residential)

## Notes

Contra Costa County -DOIT GIS

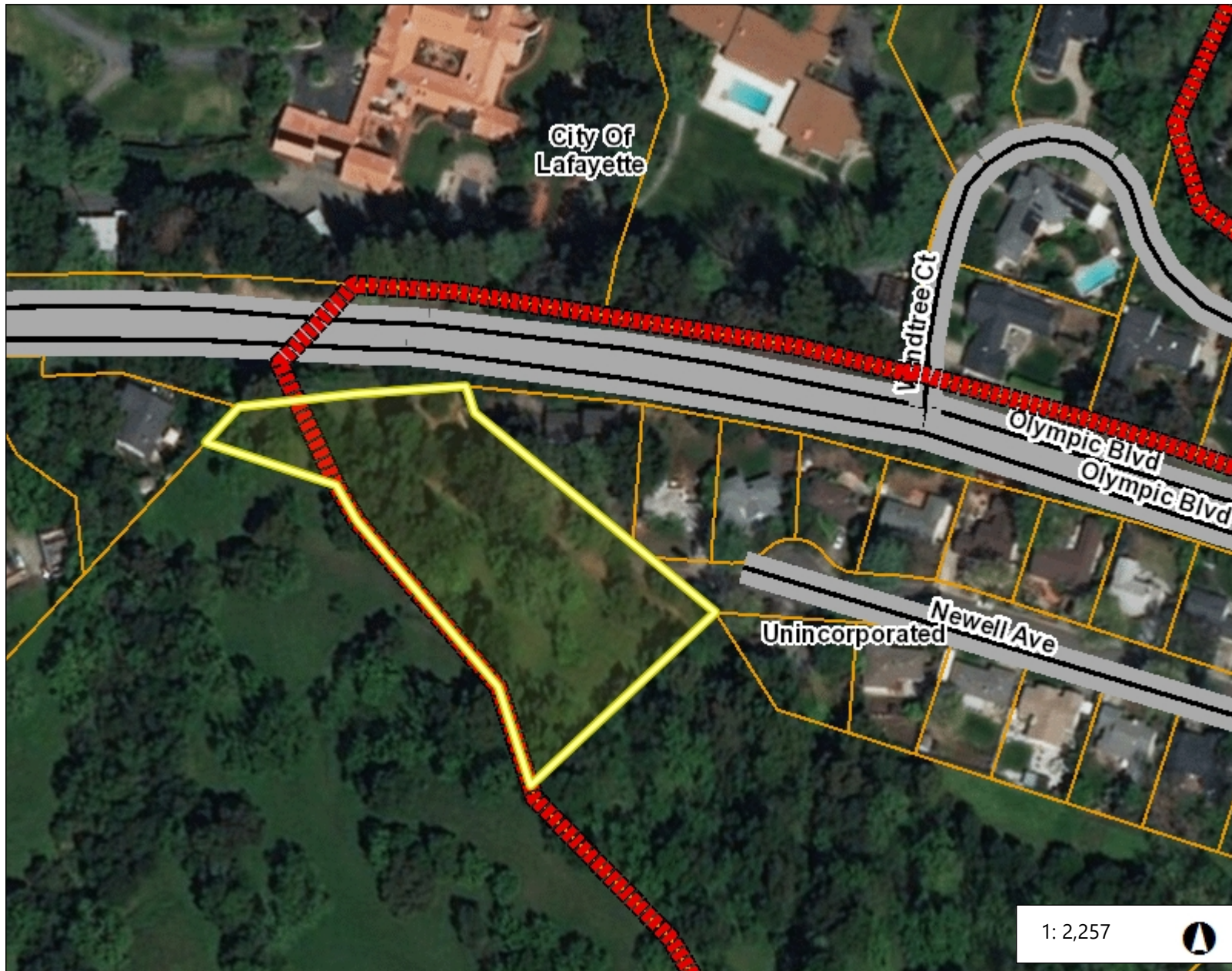
0.1 0 0.04 0.1 Miles

WGS\_1984\_Web\_Mercator\_Auxiliary\_Sphere

This map is a user generated static output from an Internet mapping site and is for reference only. Data layers that appear on this map may or may not be accurate, current, or otherwise reliable.

THIS MAP IS NOT TO BE USED FOR NAVIGATION

# Aerial Photo



## Legend

- City Limits
- Unincorporated
- Streets
- Assessment Parcels
- World Imagery
- Low Resolution 15m Imagery
- High Resolution 60cm Imagery
- High Resolution 30cm Imagery
- Citations

1: 2,257



0.1 0 0.04 0.1 Miles

WGS\_1984\_Web\_Mercator\_Auxiliary\_Sphere

This map is a user generated static output from an Internet mapping site and is for reference only. Data layers that appear on this map may or may not be accurate, current, or otherwise reliable.

THIS MAP IS NOT TO BE USED FOR NAVIGATION

## Notes

Contra Costa County -DOIT GIS