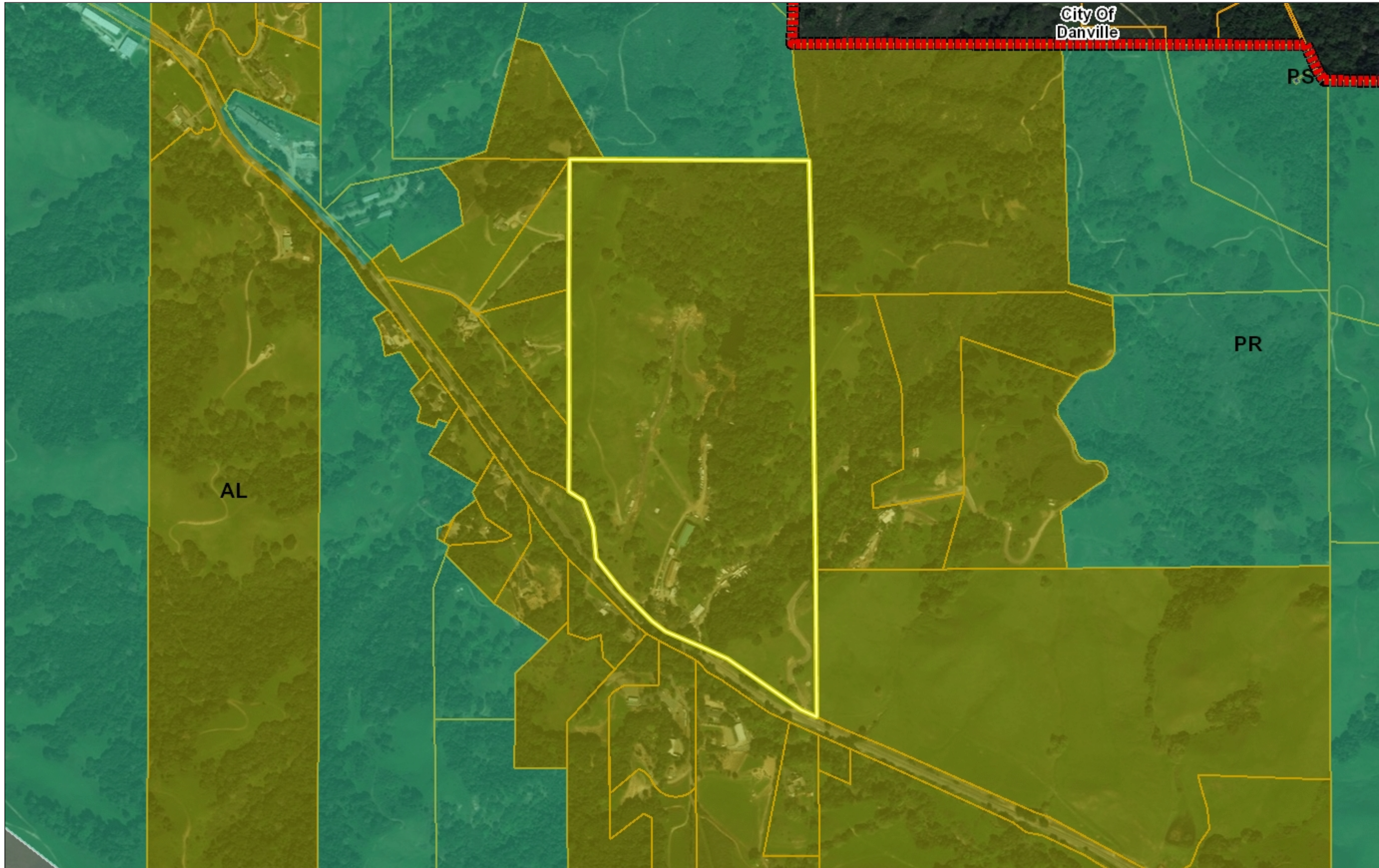


# Bollinger Canyon Rd Two-Lot Minor Subdivision and Rezoning Project (RZ16-3234) - General Plan Map



## Legend

- City Limits
- Highways
- Highways Bay Area
- General Plan**
- SV (Single Family Residential - Ver
- SL (Single Family Residential - Low
- SM (Single Family Residential - Me
- SH (Single Family Residential - Hig
- ML (Multiple Family Residential - Lc
- MM (Multiple Family Residential - M
- MH (Multiple Family Residential - H
- MV (Multiple Family Residential - V
- MS (Multiple Family Residential - V
- CC (Congregate Care/Senior Housi
- MO (Mobile Home)
- M-1 (Parker Avenue Mixed Use)
- M-2 (Downtown/Waterfront Rodeo I
- M-3 (Pleasant Hill BART Mixed Use
- M-4 (Willow Pass Road Mixed Use)
- M-5 (Willow Pass Road Commercia
- M-6 (Bay Point Residential Mixed U
- M-7 (Pittsburg/Bay Point BART Star
- M-8 (Dougherty Valley Village Cent
- M-9 (Montalvin Manor Mixed Use)
- M-10 (Willow Pass Business Park M
- M-11 (Appian Way Mixed Use)
- M-12 (Triangle Area Mixed Use)
- M-13 (San Pablo Dam Road Mixed
- M-14 (Heritage Mixed Use)
- CO (Commercial)
- OF (Office)
- BP (Business Park)
- LI (Light Industry)
- HI (Heavy Industry)
- AL, OIBA (Agricultural Lands & Off
- CR (Commercial Recreation)
- ACO (Airport Commercial)
- LF (Landfill)
- PS (Public/Semi-Public)

1: 9,028



0.3 0 0.14 0.3 Miles

WGS\_1984\_Web\_Mercator\_Auxiliary\_Sphere

This map is a user generated static output from an Internet mapping site and is for reference only. Data layers that appear on this map may or may not be accurate, current, or otherwise reliable.

THIS MAP IS NOT TO BE USED FOR NAVIGATION

## Notes

Contra Costa County -DOIT GIS