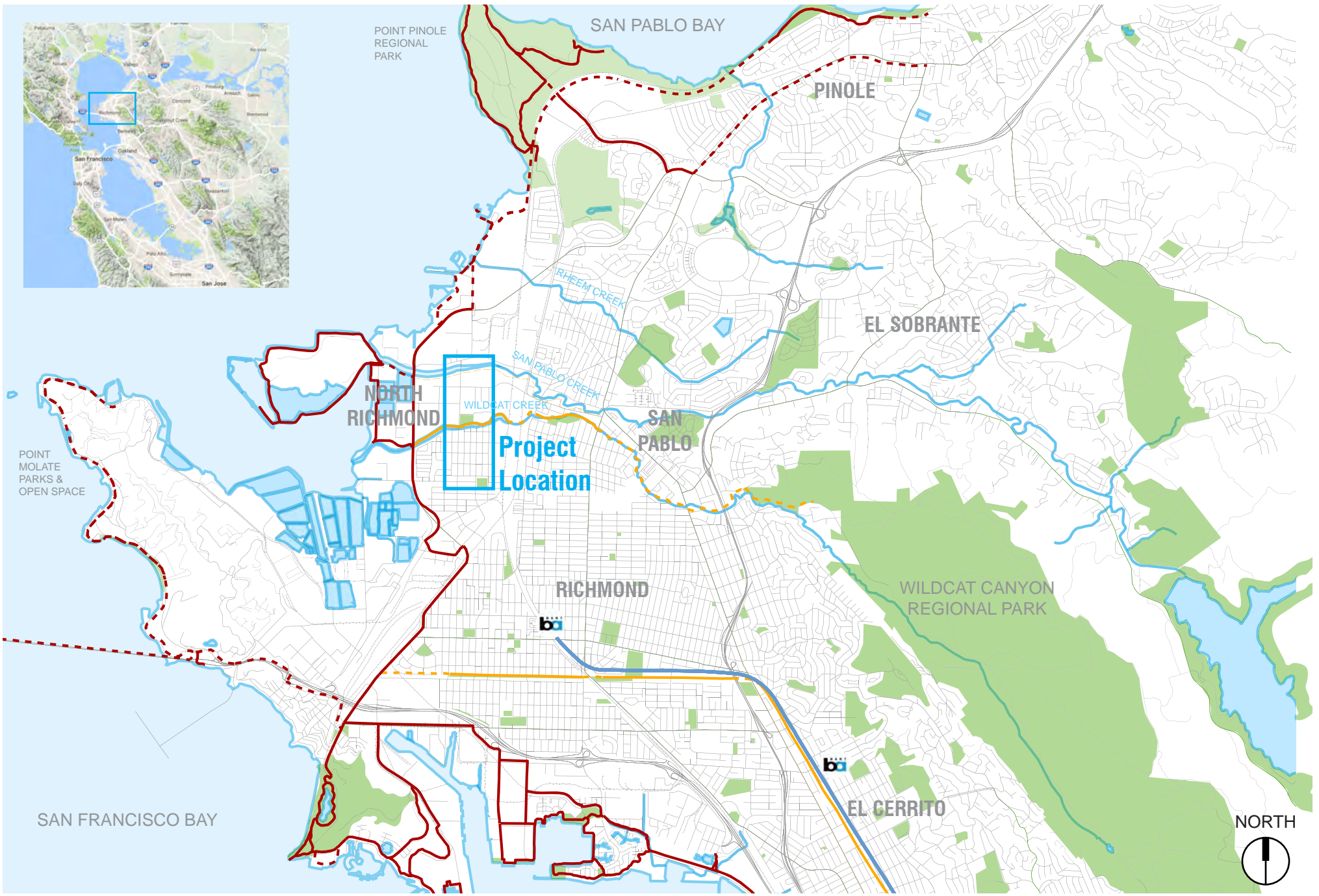
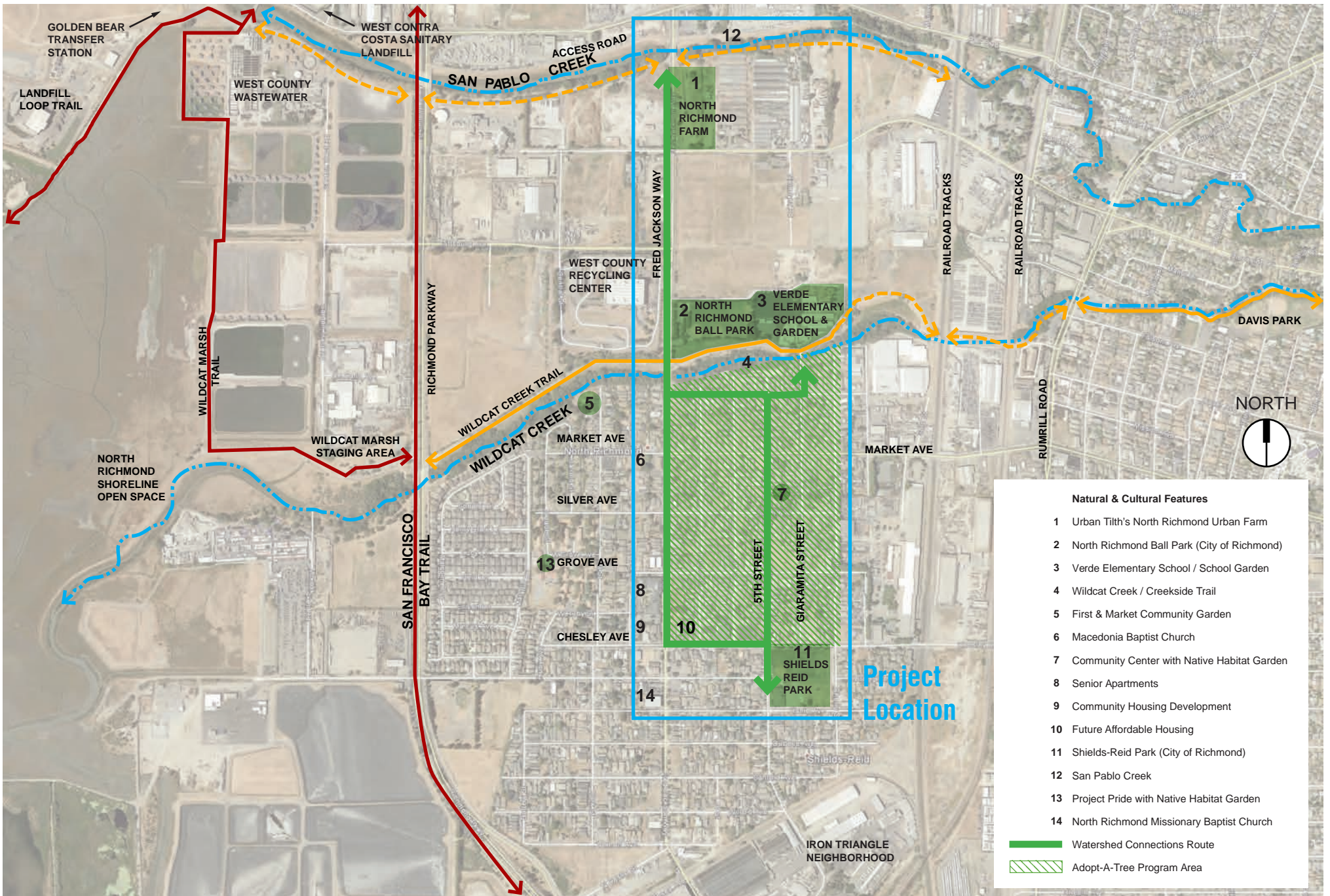


ATTACHMENT 1: PROJECT MAPS AND GRAPHICS



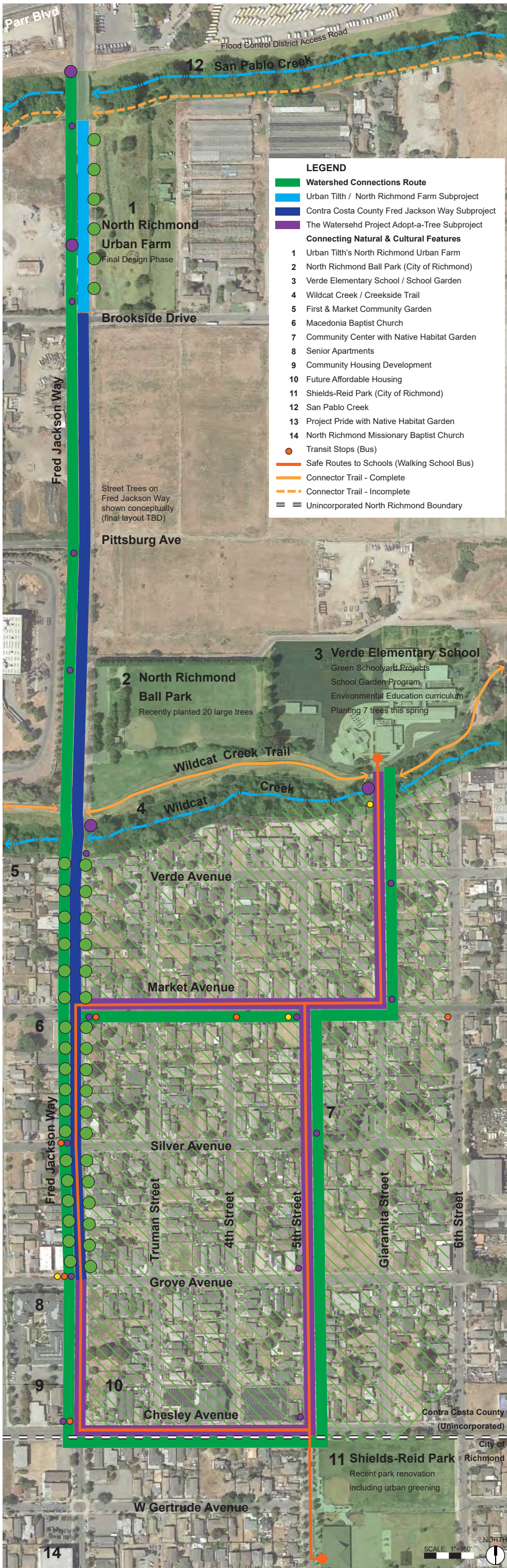
Regional Map: North Richmond and Vicinity



Neighborhood Scale Map

NORTH RICHMOND WATERSHED CONNECTIONS A MULTI-BENEFIT URBAN GREENING DEMONSTRATION PROJECT

- Trail Legend**
- Bay Trail - Complete
 - Bay Trail - Incomplete
 - Connector Trail - Complete
 - Connector Trail - Incomplete



Fred Jackson Way Rain Gardens

Project Lead: Urban Tilth

- Urban Greening: 6 Trees, 3,475 s.f. planting area with native species
- Stormwater Management: 3,475 s.f. rain garden treats 3,110,400 gallons of stormwater annually



Fred Jackson Way
Complete Streets integrate urban greening, sustainable features, stormwater management and active transportation

Rain Garden
Stormwater management becomes a neighborhood amenity, featuring native plants and pollinators as well as street trees to lower urban temperatures

Pedestrian Sidewalk

Interpretive Signage
This sign describes the bioswale design and how a healthy watershed benefits the farm

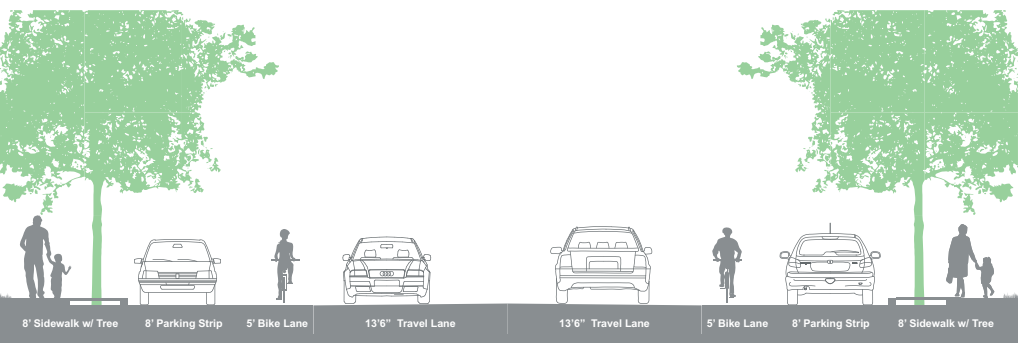
Urban Tilth's North Richmond Urban Farm
In Summer of 2012 Urban Tilth began work with County Supervisor John Gioia's office on developing the North Richmond Farm at the corner of Fred Jackson Way and Brookside Dr.



Fred Jackson Way First Mile/Last Mile Urban Greening

Project Lead: Contra Costa County Public Works Department

- Urban Greening: 37 Trees (shown conceptually, see design plan for layout)
- This is a Contra Costa County Department of Public Works Project. The ATP-funded project includes ADA accessible sidewalks with street trees along 0.3-mile roadway from Grove Avenue to Wildcat Creek Trail. It extends an additional 0.3 miles northerly to Brookside Drive to construct sidewalk and Class II bike lanes for a total of 0.6 miles of continuous pedestrian and bicycle access.



Clean & Green Adopt-a-Tree Program & Walkable Watersheds

Project Lead: The Watershed Project

- ▨ Urban Greening: Adopt-a-Tree Program / 50 Trees (refer to design plan for opportunity sites)
- Walkable Watersheds: 4 interpretive features, 15 wayfinding markers, painted pavements, art
- Water Quality / Litter Reduction: 3 "jewel boxes" (litter/recycling receptacles with mosaic art)



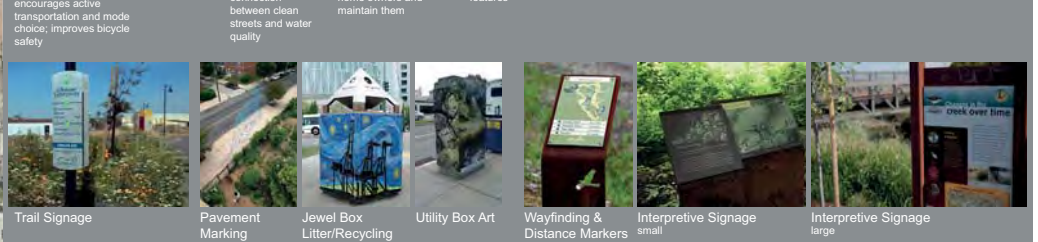
Complete Streets
Integrate urban greening, sustainable features, stormwater management and active transportation

Pavement Marking
playful stormwater art highlights the connection between clean streets and water quality

Adopt-a-Tree Program
a sustainable program to plant street trees in collaboration with home owners and maintain them

Wayfinding & Distance Markers
improves walkability; encourages exercise; identifies safe routes; calls out multi-benefit green infrastructure features

Interpretive Signage
references natural and cultural features; promotes watershed awareness



NORTH RICHMOND WATERSHED CONNECTIONS A MULTI-BENEFIT URBAN GREENING DEMONSTRATION PROJECT

