



Contra Costa County Green Infrastructure Plan: Final Update

For the Transportation, Water, & Infrastructure Committee

By John Steere, Watershed Program, CCC PWD

July 18, 2019



Background/History

- ▶ TWIC reviewed the Contra Costa County Green Infrastructure (GI) Work Plan in October 2016 and received update in July 2018
- ▶ The GI Plan Framework was approved by the Board of Supervisors in June, 2017.

Contra Costa County Green Infrastructure Workplan

Approved on: June 13, 2017

Approved by: Contra Costa County Board of Supervisors

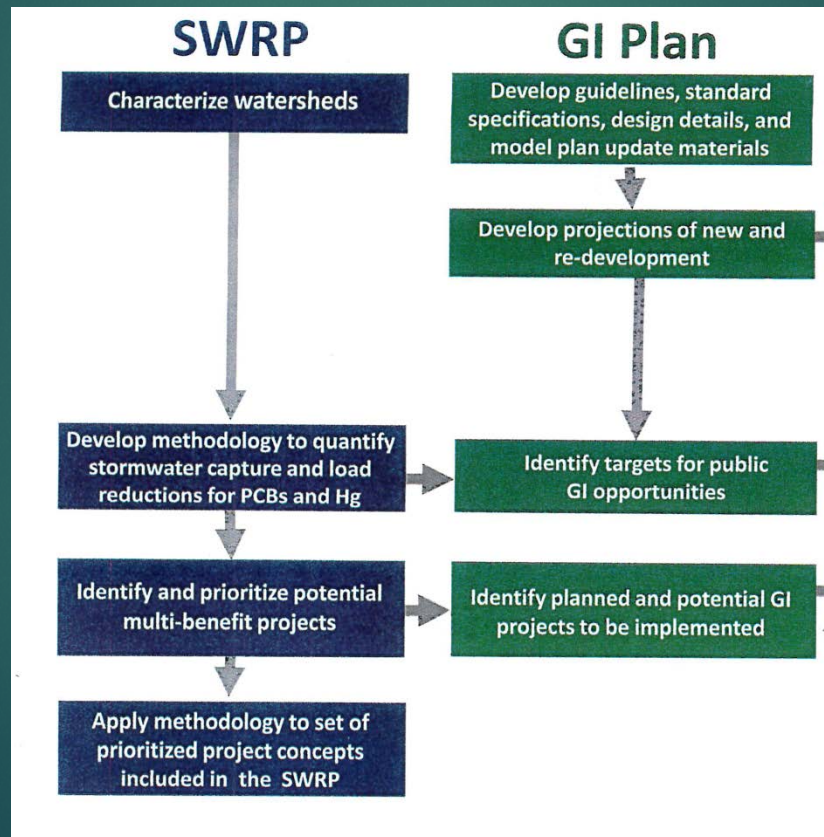
Submitted by:

John Steere/Contra Costa County

Green Infrastructure Plan Technical Advisory Group

GI Plan: Basis in Stormwater Resources Plan

GI plan based on County Stormwater Resources Plan (SWRP), completed in September 2018:



Green Infrastructure: Why so important?

- Green infrastructure is broadly defined as an approach to water management that strives to deliver environmental, social, and economic benefits
- GI measures can take many forms, yet primarily use retention and/or infiltration to achieve water quality flow control benefits.
- GI is an efficient and resilient method to reduce pollutant loads from development runoff.



What is the GI Plan...

- *The Municipal Regional Permit (MRP) requires municipalities to develop long-term plans (30-40 years) to incorporate low impact development measures to treat polluted stormwater.*
- *Provides blueprint for how County will transform drainage system to treat stormwater through bioretention basins and bioswales.*
- *Intended to be a “living” document, and become a tracking and implementation tool.*
- *Creates multipurpose project benefits, including: pollutant filtration; reduce localized flooding; and environmental and community enhancements.*



Examples of bioretention



...and permeable pavement

Green Infrastructure Benefits

- Long-term solution to reduce pollution and meet water quality goals
- Sustainable, low-maintenance stormwater treatment option
- Supports protection and restoration of urban creeks and the Bay/Delta

Other potential benefits:

- Neighborhood greening
- Recreation space
- Traffic calming
- Habitat creation
- Heat island mitigation
- Water supply augmentation



Cities across the US are Incorporating GI



Daly City



Fremont



San Francisco



Portland



Seattle



Philadelphia (pervious pavement)

Final Draft GI Plan

Green Infrastructure Plan



Unincorporated Contra Costa County



Prepared by Geosyntec Consultants and SCI Consulting Group

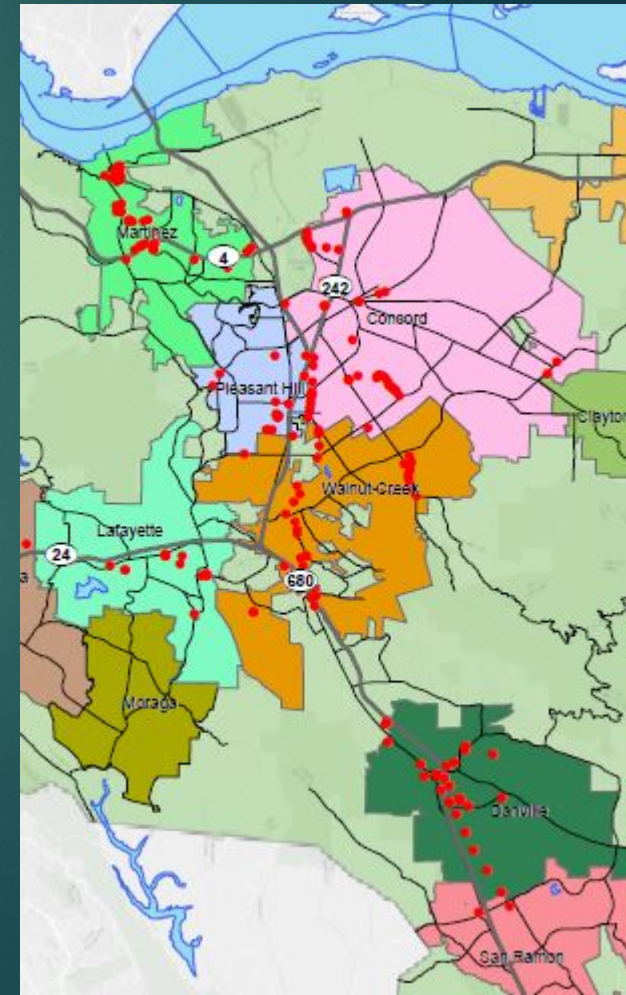
FINAL DRAFT FOR REVIEW – JUNE 2019

GI Plan: Prioritizing Projects

Projects in **SWRP** have been prioritized in **GI Plan** for those that best fulfill:

- 1) Treatment of unincorporated County lands and road right of way contaminated with PCBs, Mercury, and other regulated pollutants
- 2) County-owned properties in County and cities' jurisdictions with "Old Industrial" land use designation
- 3) County-owned properties in County and cities' jurisdictions with "Old Urban" land use use
- 4) County roads in unincorporated areas adjacent to land with "Old Urban" land use designation
- 5) **Emphasis on multi-benefit projects**

*Portion of County-Owned
Parcels within Cities*



Final Draft GI Plan Sections

Eight sections:

1. Introduction and Overview
2. Green Infrastructure Targets
3. Public Project Identification, Prioritization, and Mapping
4. Early Implementation Projects
5. Tracking and Mapping Public and Private Projects Over Time
6. Design Guidelines and Specifications
7. Funding Options
8. Adaptive Management



Determination of Potential Priority GI Locations

- ▶ Storm Water Resource Plan (SWRP) identified approximately 3,800 potential public project locations
- ▶ Initial screening reduced number to 856 locations
- ▶ Screening excluded: new urban/open space; old urban ROW not prioritized in SWRP; low priority locations from SWRP
- ▶ Additional screening using priority categories (e.g. PCBs, old industrial and old urban land uses), resulted in 206 locations
- ▶ *From TAG feedback and further prioritization, 109 locations moved forward to desktop screening*

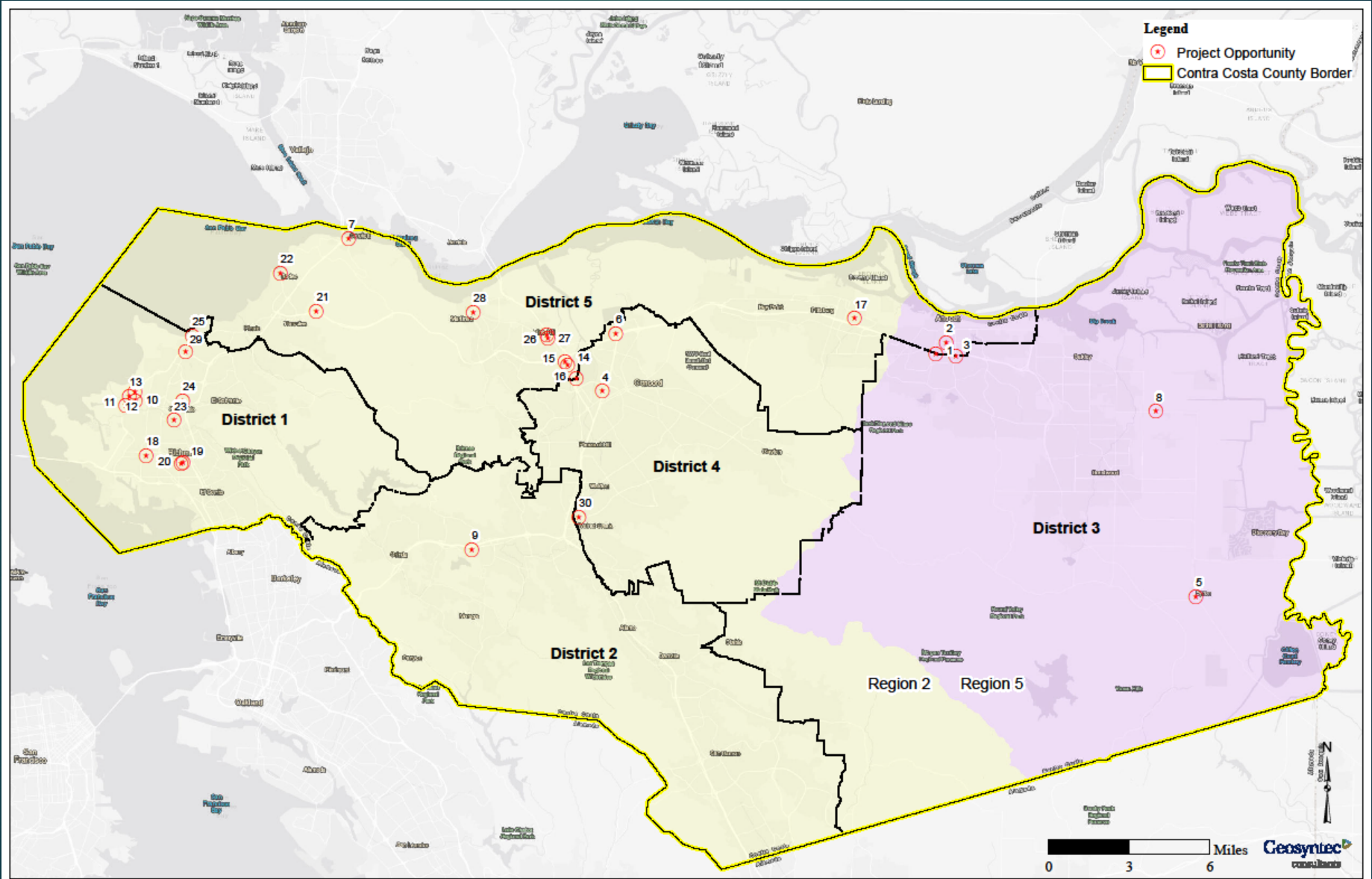
Revised Potential Project Location List

Based on further prioritization from TAG comments, feedback from County staff, desktop feasibility assessments, and selected site visits, *potential project locations reduced to 30 (for 2020-2040).*

Goal: Implement 1 GI project per year (on average) on a County parcel/ROW



Potential Priority GI Projects Locations



Potential Project Location Distribution

- ▶ Locations by BOS District:

- ▶ *District 1*: 11
- ▶ *District 2*: 1
- ▶ *District 3*: 4
- ▶ *District 4*: 4
- ▶ *District 5*: 10



- ▶ Locations by Regional Water Quality Control Board (Regions):

- ▶ Region 2: 26
- ▶ Region 5: 4

Nine GI Funding Strategies

(From Chapter 7 of the County GI Plan)



1. Stormwater Fee
2. Green Benefits District
3. Enhanced Infrastructure Financing District
4. Not-for-Profit Partnerships
5. Community Development Corporation
6. Volunteers
7. Developer Fees, In-Lieu Fees, and Credit Trading Program
8. Mitigation Fees Fund
9. Other Opportunistic Strategies (e.g. agency partnerships)

Next Steps

1. Geosyntec responds to comments and furnishes Final GI Plan by July 19th
2. BOS approval August 6, 2019
3. Submit to Clean Water Program (CWP) by August 30th
4. CWP submits GI Plan to Water Board by September 30th
(as part of Annual Report)

