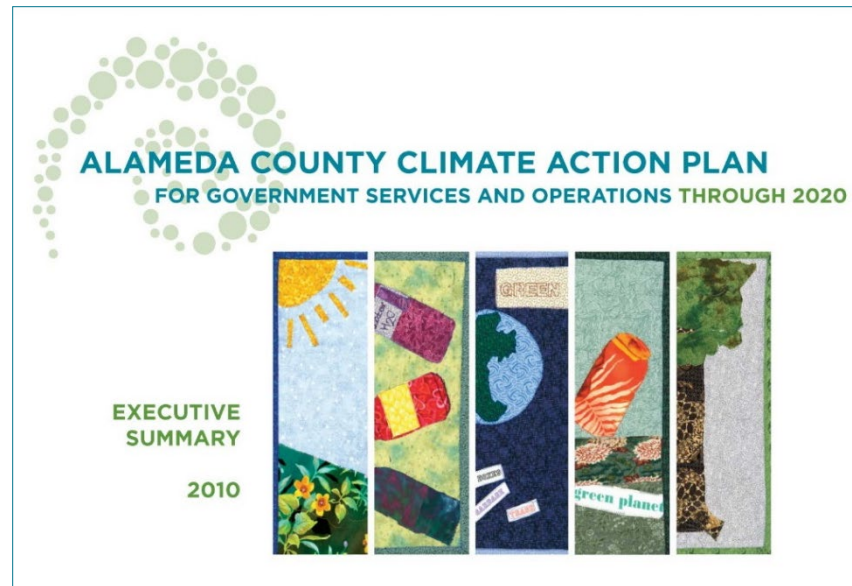


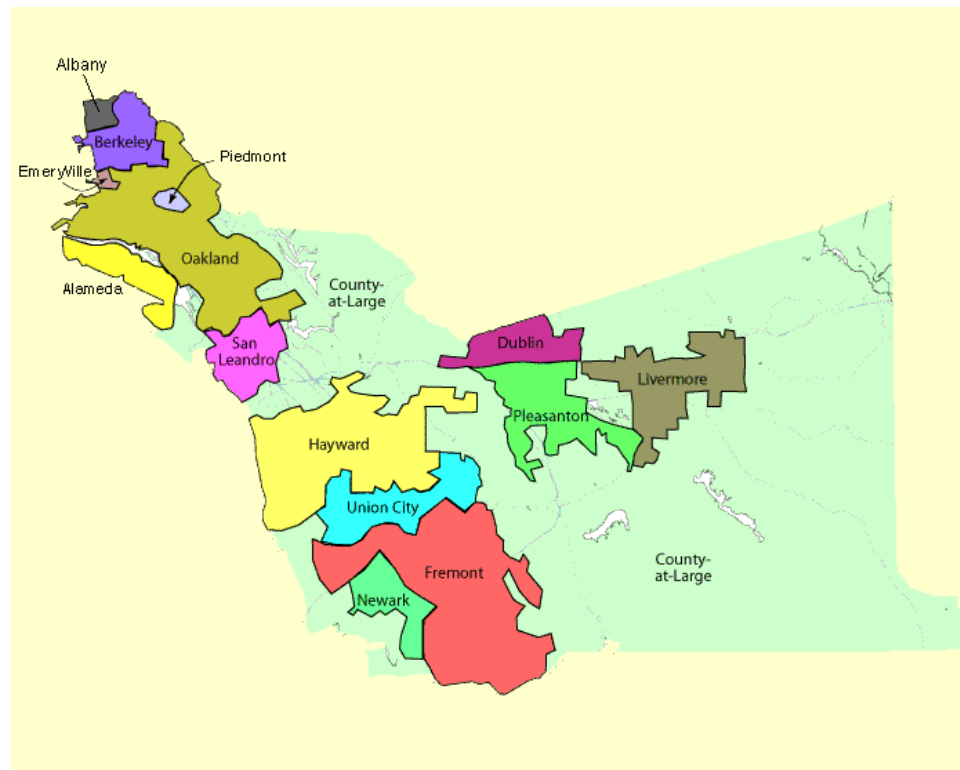
Alameda County: Putting Action into Our Climate Action Plan



Contra Costa County Sustainability Commission
by Carolyn Bloede, AC Sustainability Office
August 1, 2019

Alameda County Serves 1.6M Residents

- Social safety net, public health, ensuring justice & community safety, improving quality of life
- 9,700 employees, 160 buildings, 6M sq. ft.
- Community centers, libraries, offices, courts, detention centers, maintenance facilities, medical



Delivering Services Uses Energy and Resources = GHG Emissions

GHG



GHG



GHG



GHG



GHG



Energy Use



Vehicle Travel



Purchasing
& Using
Goods



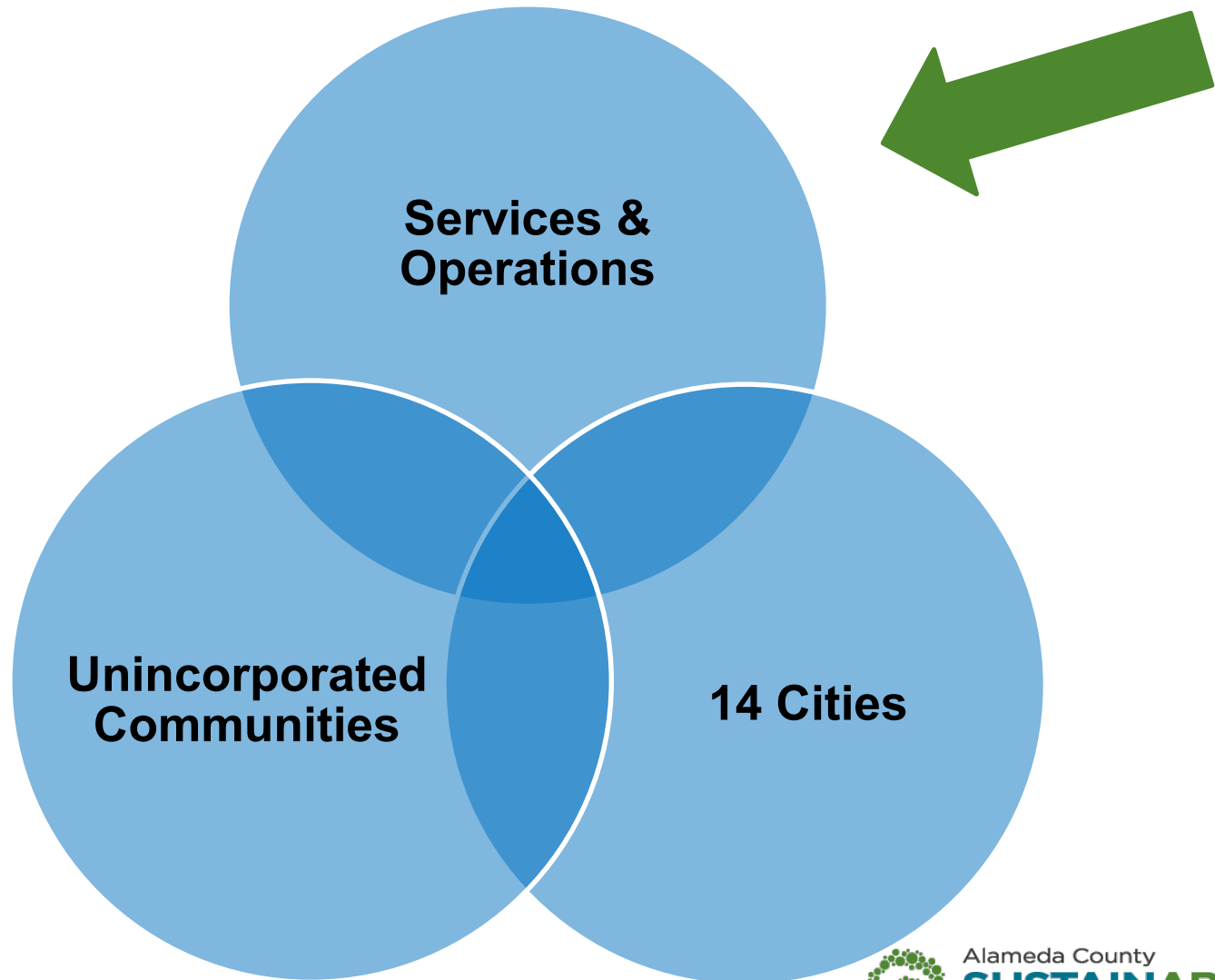
Building
Design &
Operations



Landfilling
Waste



County Climate Action Planning



Good News: Sustainability Innovation is Already Taking Place Across Agencies



Recycling



Environmentally Preferable Purchasing



Smart Commutes



Green Building



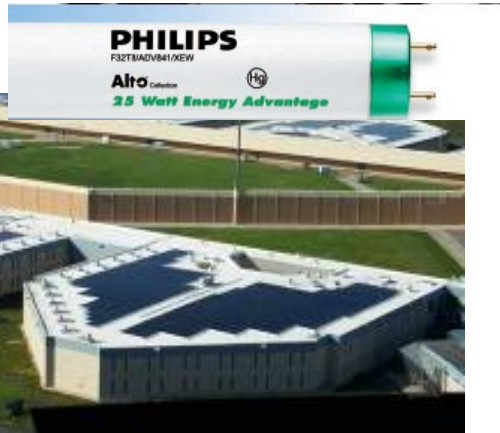
Bay Friendly Landscaping



Green Fleets



PBT & Toxics Reduction



Efficiency & Renewable Power

BOS & CAO Want to Align Efforts through Policy



Board Action

**Emissions
Inventory**

**Broad
Engagement
Approach**

**Implementation
Structure**

Board of Supervisors' Mandate: Climate Protection Leadership Resolution (2006)

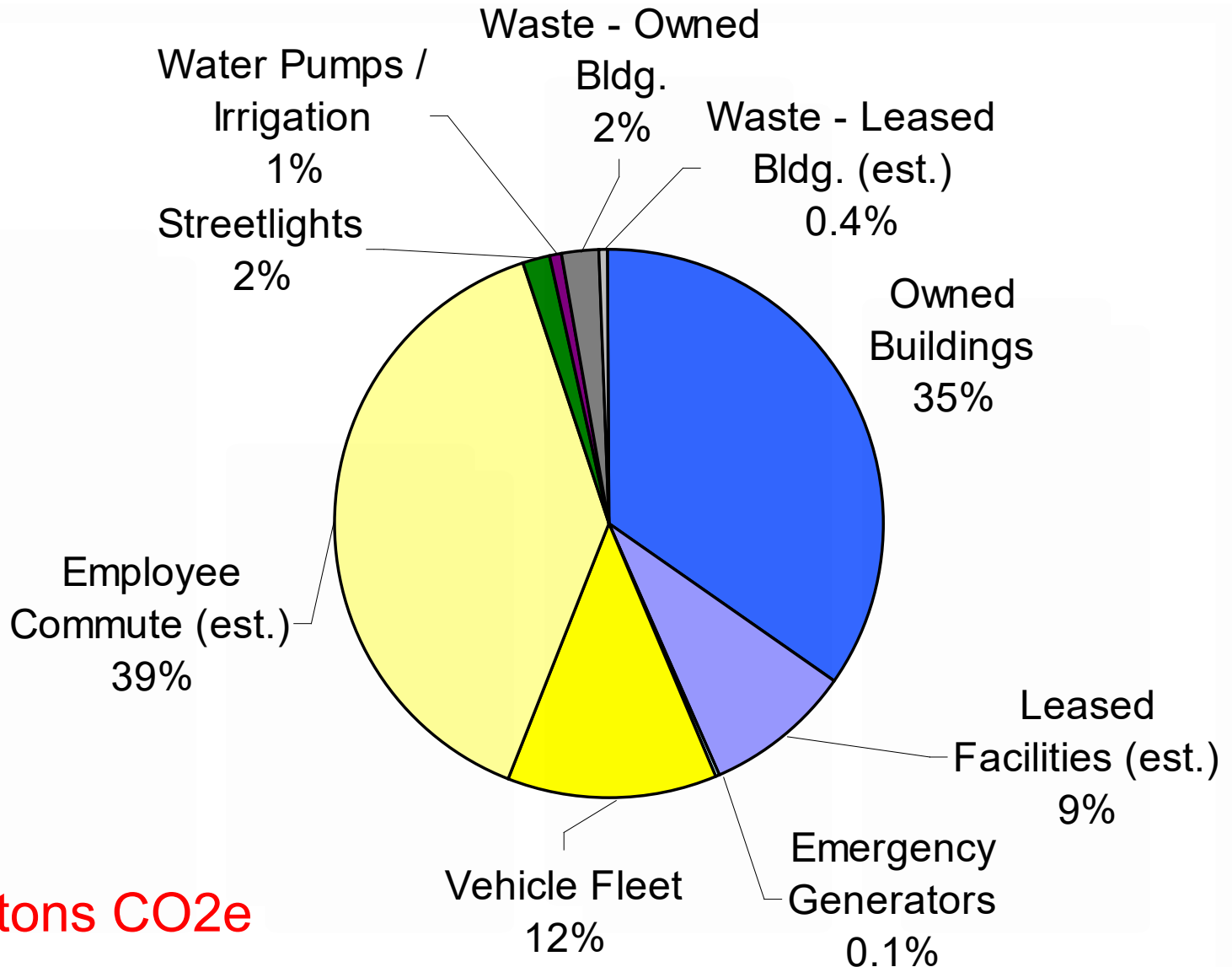
- 
- 
- Complete an emissions inventory
 - Set a reduction target
 - Develop an action plan
 - Implement the plan
 - Monitor progress



And.....

- **County Executive** will provide **administrative oversight** through a **Climate Executive Committee**
- County agencies will use **collaborative cross-agency approaches** to implement the Plan
- **Strategies** will be **integrated into County processes**: general plans, strategic plans, capital planning, budgeting, County Vision

Assess Where We Are



62,907 metric tons CO₂e

Engagement

Broad Engagement Approach from the Start

Simplicity

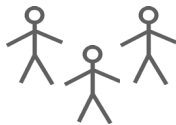
Consensus /
Ownership

Success

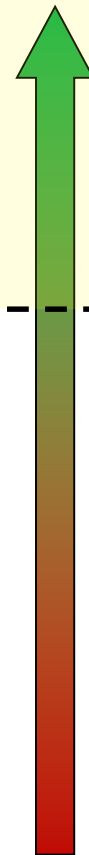
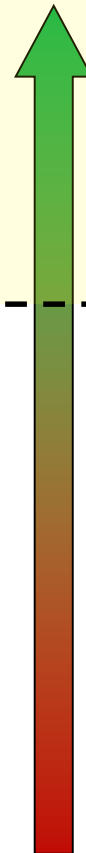
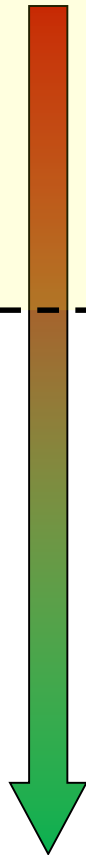
- All Hands on Deck



- Brain Trust



- Climate Czar(in)



80 Prioritized Measures in 6 Action Areas

Built Environment


Transportation

Solid Waste

Climate Protection
Leadership

Cross-Cutting
Strategies

Beyond Reductions

Measure	Priority Tier	Benefits	Resource Efficiency	Practicality
Action 1	1st			



ALAMEDA COUNTY CLIMATE ACTION PLAN

FOR GOVERNMENT SERVICES AND OPERATIONS THROUGH 2020

EXECUTIVE
SUMMARY

2010



Board of
Supervisors
Approval

How do we implement this?

Challenge: Climate Action in a Decentralized County Government

- 5-member Board of Supervisors
- County's Administrator's Office (CAO)
- 20+ Departments / Agencies
- 9,700 County Employees located in >160 facilities



Need an Implementation Approach that Works

- Connect agency's missions to climate action
- CAO convenes Executive Committee
- Launch cross-agency teams for broad thinking
- Create visibility on outcomes
- Engage individual employees to take action



Climate Change is Impacting Residents & Our Services



CAO Convened Climate Executive Committee



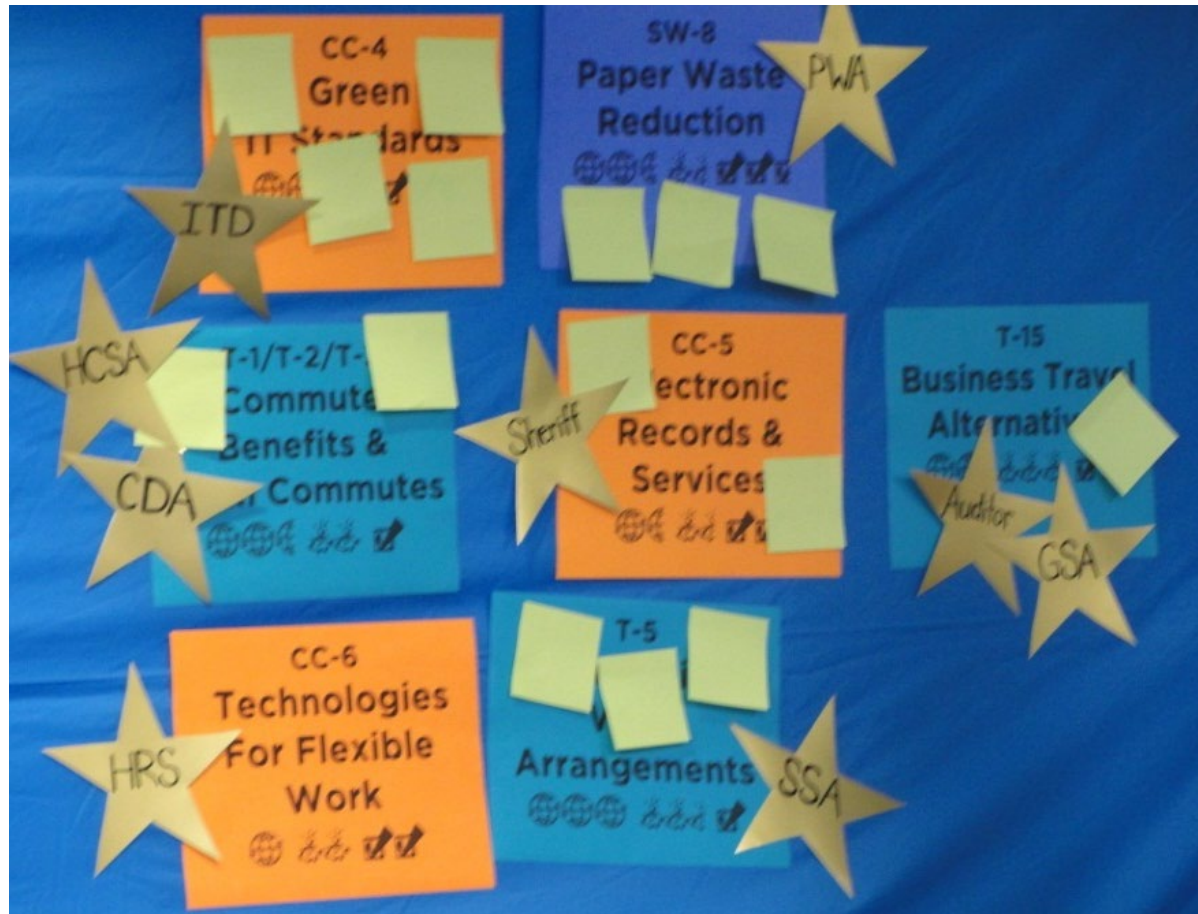
CAO Gave Call to Action



Engaged Executives in Decision Making Using Participatory Methods



CAO & Agency Directors Sponsored 12 Countywide Initiatives



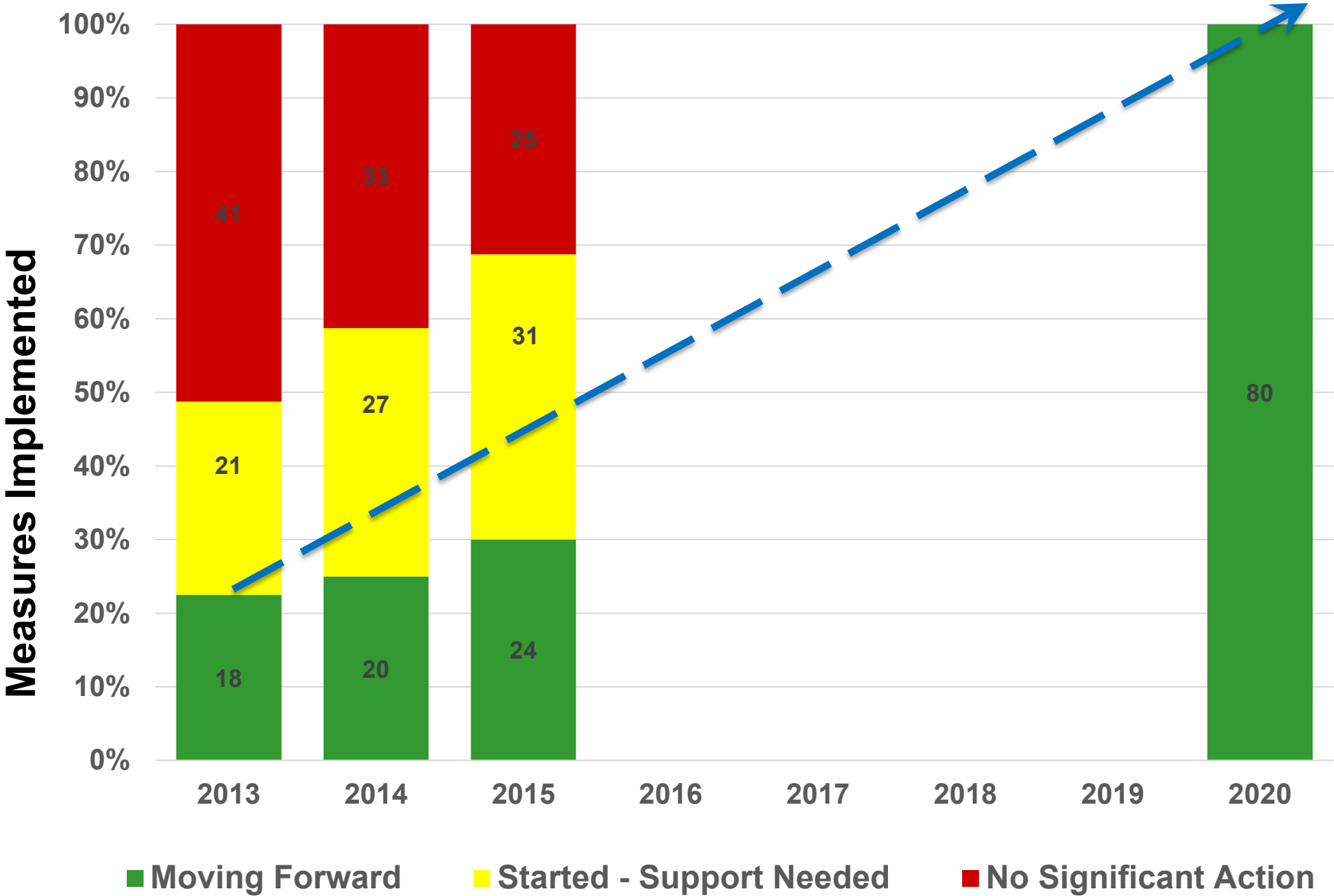
Launched Climate Teams with Support Structures



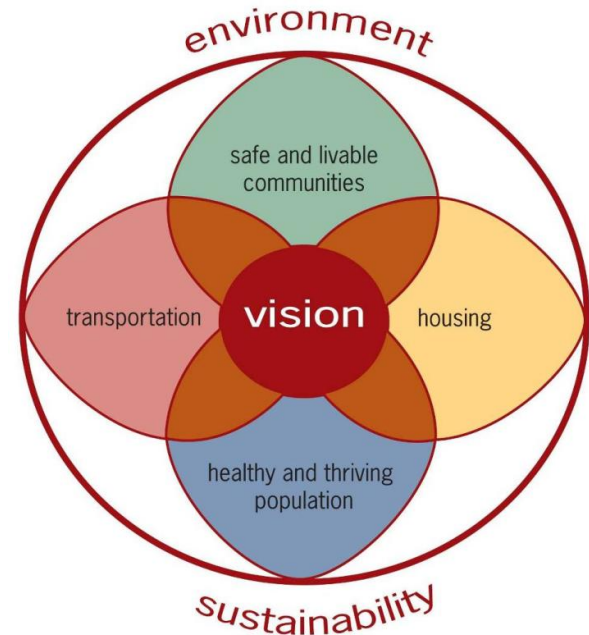
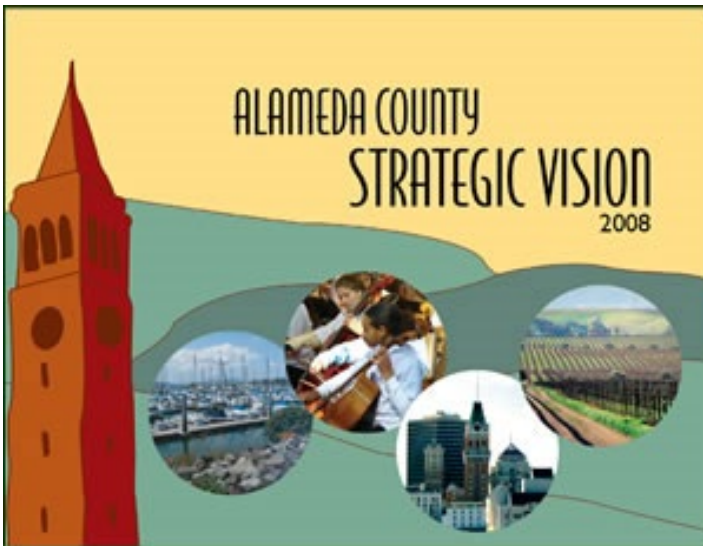
Innovated on Saving Resources and Increasing Efficiency



Visibility: Plan Implementation Progress



Visibility: Embed Sustainability as a Guiding Principle in County Vision



Employees are Engaged to Set a Culture of Sustainability



small steps.
BIG difference.



Operate Green



Employee Campaigns: Community Commutes Day

Goal: Convey that clean commuting is doable



20 Agencies 40 Teams

600 Participants

*300 new Clean Commuters
on a single day*

- Local emphasis
- Make it “the norm”

Walking the Green Carpet - Green Meeting Academy Awards!



Employee Reminders: Bathrooms and Kitchens

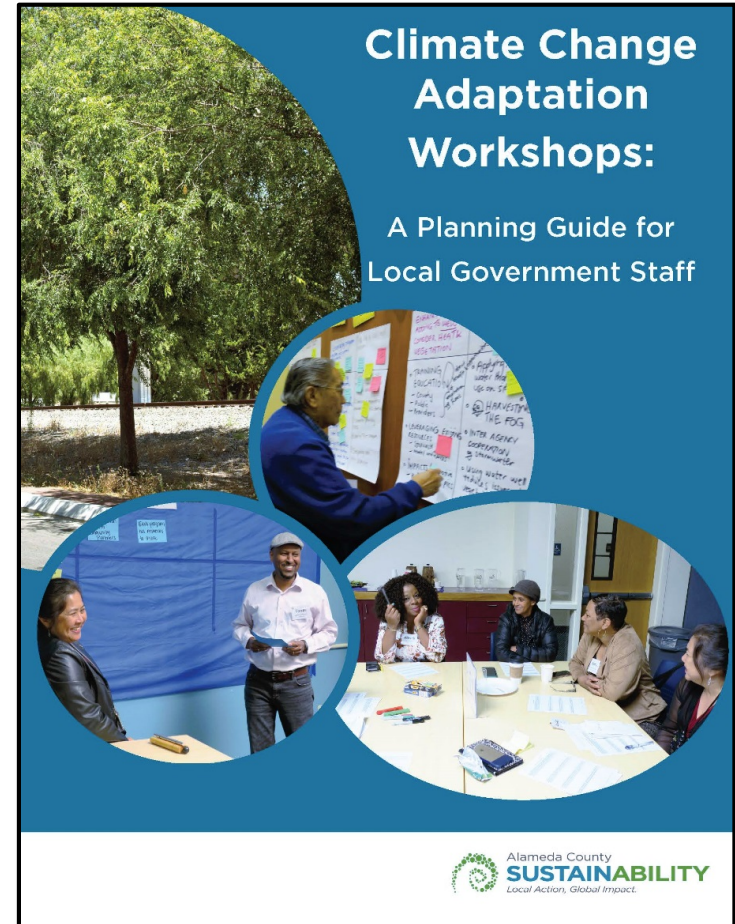


Make it Fun: “The Great Race”



On Deck

- Wildfire smoke communication protocol
- Heat preparedness – vulnerability and cooling center mapping
- Cooling our Communities tree planting project in unincorporated areas
- Climate Vulnerability Assessment
- Climate Plan updates
- And more.....

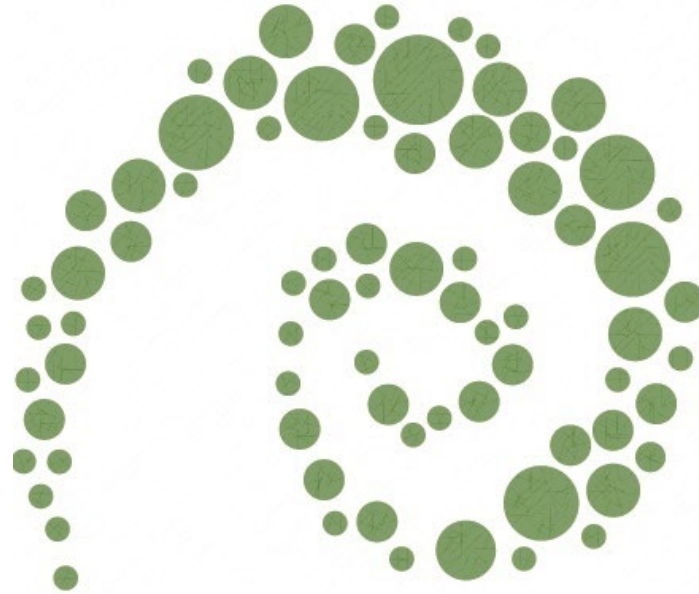


To Learn More About Participatory Facilitation

- Technology of Participation Facilitation (ToP)
 - Center for Strategic Facilitation, Oakland
 - www.strategicfacilitation.com/



Thank You!



Carolyn Bloede, Sustainability Office
(510) 208-9721
carolyn.bloede@acgov.org

Thank You!



Carolyn Bloede
Sustainability Office
(510) 208-9721
carolyn.bloede@acgov.org