



# 2020 Draft State Platform

## Contra Costa County

Website: [www.contracosta.ca.gov](http://www.contracosta.ca.gov)



# TABLE OF CONTENTS

Introduction _____	3
County Profile _____	3
Demographic Highlights _____	3
Governance _____	4
Legislative Platform Purpose _____	5
Mission, Vision, and Values _____	5
Sponsored bills and legislative priorities _____	6
Legislative and/or Regulatory Advocacy Priorities _____	6
Principles and Policy Statements _____	7
Agriculture _____	7
Animal Services _____	7
Child Support Services _____	8
Climate Change _____	8
The Delta _____	10
Economic Development _____	10
Elections _____	10
Flood Control and Clean Water _____	11
General Revenues/Finance _____	12
Health Care _____	13
Homeless Services _____	16
Human Services _____	17
Justice Systems _____	19
Land Use/Community Development/Natural Resources _____	20
Library _____	20
Telecommunications and Broadband _____	21
Transportation _____	21
Veterans _____	23
Waste Management _____	23
Workforce Development _____	23

# INTRODUCTION

## County Profile

Contra Costa County is home to more than one million residents and was one of the original 27 counties established in California in 1850. It is the ninth most populous county in the state. Contra Costa is large - over 733 square miles and extends from the northeastern shore of the San Francisco Bay easterly about 50 miles to San Joaquin County. The County is bordered on the south and west by Alameda County and on the north by the Suisun and San Pablo Bays.

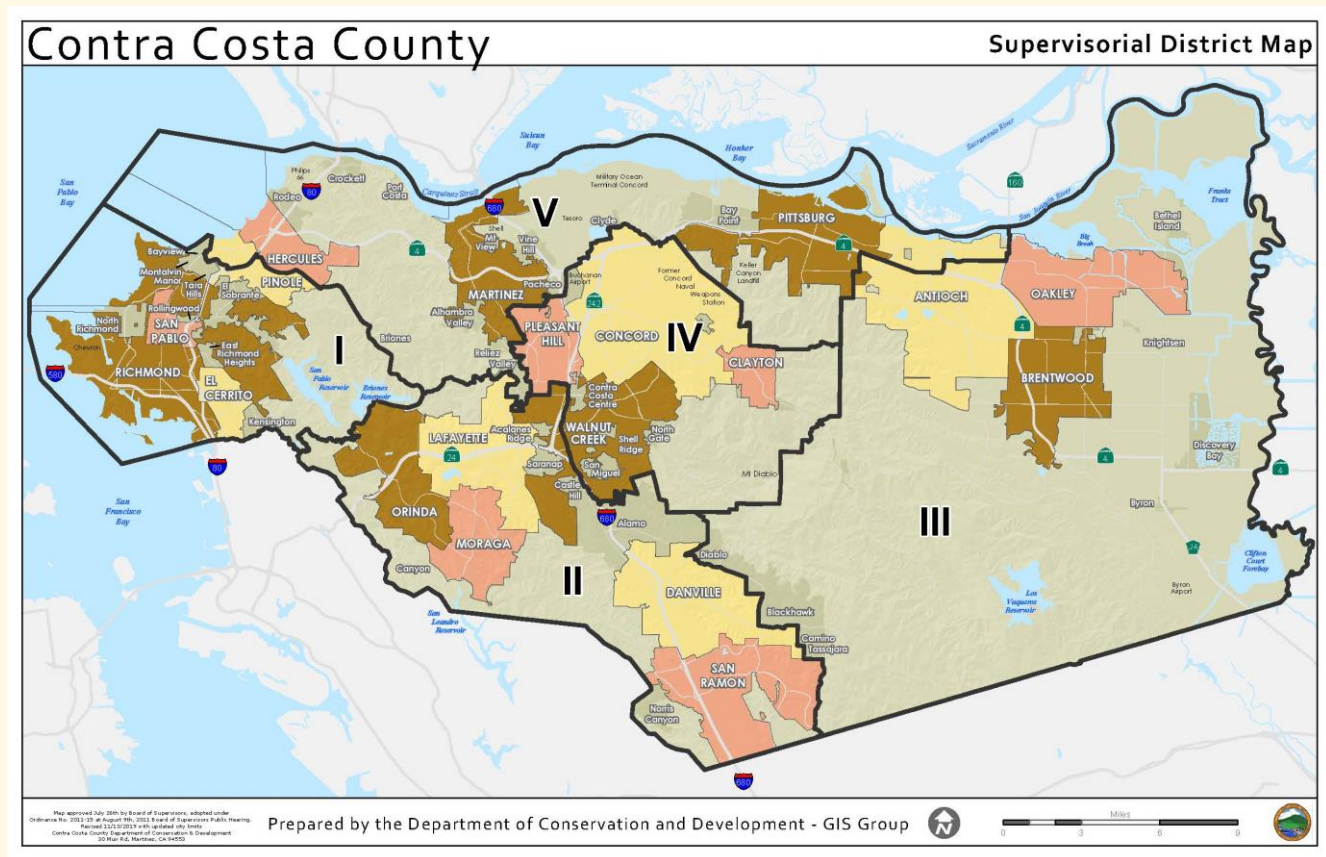
The western and northern shorelines are highly industrialized, while the interior sections are suburban/residential, commercial and light industrial. About 40 percent of the county is under the jurisdiction of 19 incorporated cities and towns, and large portions of the remaining unincorporated area are part of public park systems. Contra Costa County is also very diverse, with communities that range from small agricultural towns like Byron, with a population density of about 200 people per square mile, to urban population centers like Contra Costa Centre, a bustling transit village with a population density of 8,400 people per square mile.



## Demographic Highlights

Approximately 1.1 million people live throughout Contra Costa County, but only 15 percent of those, or about 172,080 people, reside in the unincorporated areas of the county. Most of the population is consolidated along the major transportation corridors, including Interstates 80 and 680, Highways 4 and 24, and the BART lines. The median age of County residents is 39 years old. Since 2010, the fastest-growing age group has been seniors 65 or older, as the baby boom generation ages. The majority (57 percent) of County residents are white, with significant proportions of Asian (17 percent) and African American (8 percent) people. The Census tracks Latinx ethnicity separately from other populations; in total, the Hispanic/Latino population makes up approximately one-quarter of the total population.





## Legislative Platform Purpose

The Legislative Platform establishes the priorities, principles, and policy statements of the Contra Costa County Board of Supervisors and establishes the basis for its advocacy efforts, alerting our legislative partners of the greatest needs of our residents and where we need additional help<sup>1</sup>. The Platform provides general direction to County departments and agencies, legislative advocates, delegation members, and the public on our positions on key policy matters that would impact the way the County does business. The Platform also includes new bill requests for which legislation is sought from Contra Costa County. The County's protocol for position development is *Attachment A*.

Contra Costa County has also adopted a *Delta Water Platform* to identify and promote activities and policy positions that support the creation of a healthy Sacramento-San Joaquin Delta. Contra Costa County uses this Delta Water Platform to guide its actions and advocacy regarding the future of the Delta. The Delta Water Platform is *Attachment B*.

## Mission, Vision, and Values

Contra Costa County has adopted the following Mission, Vision and Values statement:



The graphic features the Contra Costa County seal at the top left. The title "Contra Costa County" is prominently displayed in a large, white, serif font. Below the title, the text "Mission", "Vision", and "Values" are arranged in three columns. The "Mission" section states that the county is dedicated to providing public services that improve the quality of life for residents and businesses. The "Vision" section states that the county is recognized as a world-class service organization where innovation and partnerships merge to enable residents to enjoy a safe, healthy, and prosperous life. The "Values" section states that the county serves people, businesses, and communities, and lists six core values: Clients and communities, Partnerships, Quality Services, Accountability, Fiscal prudence, and Organizational excellence. At the bottom of the graphic is a large, diverse group of people, including a firefighter, a woman holding a dog, a construction worker, a man holding a keyboard, a woman holding books, a woman holding a child, a nurse, a police officer, and a man holding a tool.

**Mission**  
Contra Costa County is dedicated to providing public services which improve the **quality of life** of our residents and the economic viability of our businesses.

**Vision**  
Contra Costa County is recognized as a **world-class service organization** where innovation and partnerships merge to enable our residents to enjoy a safe, healthy and prosperous life.

**Values**  
Contra Costa County **serves people,** businesses and communities. Our organization and each one of our employees value:

- Clients and communities
- Partnerships
- Quality Services
- Accountability
- Fiscal prudence
- Organizational excellence

<sup>1</sup> Note that until the 2021-2022 Platform is adopted, the 2019 Adopted Platform policies are considered a component of this Platform.

# SPONSORED BILLS AND LEGISLATIVE PRIORITIES

Sponsored bill proposal #1: Legislation to increase the cap for a countywide general sales tax measure to be placed on the November 2020 ballot.

Sponsored bill proposal #2: Legislation, in conjunction with Alameda County and other partners, that establishes statewide hauler permitting requirements and associated penalties as well as increases penalties allowed by State law for illegal dumping.

Sponsored bill proposal #3: Legislation to dedicate net proceeds from State Lands Commission lease revenues for public benefit in the County in which they are generated with a focus on increasing public access to and enjoyment of the waterfront.

Sponsored bill proposal #4: Legislation to allow telephonic annual In-Home Supportive Services (IHSS) reassessments when a client meets criteria consistent with variable assessment guidelines.



## Legislative and/or Regulatory Advocacy Priorities

- ✓ Climate Change
- ✓ Health Care (including Behavioral Health, Substance Use Disorder (SUD))
- ✓ Housing and Homelessness
- ✓ Justice Reform
- ✓ The Sacramento-San Joaquin Delta/Water and Levees
- ✓ Transportation for Seniors/Persons with Disabilities

# PRINCIPLES AND POLICY STATEMENTS

## Agriculture

- SUPPORT efforts to ensure sufficient state funding for pest and disease control and eradication efforts to protect both agriculture and the native environment; high risk pest exclusion activities; pesticide regulatory and law enforcement activities; and noxious weed pest management.
- SUPPORT funding for agricultural land conservation programs and agricultural enterprise programs, and support revisions to State school siting policies, to protect and enhance the viability of local agriculture.
- SUPPORT legislation to establish legal authority where needed to facilitate the efforts by the California Department of Food and Agriculture and the Department of Boating and Waterways to survey and treat all infestations in the Delta of invasive aquatic species through integrated pest management methods.
- SUPPORT legislative changes that preserve the integrity of the Williamson Act, eliminate abuses resulting in unjustified and premature conversions of contracted land for development, and to fully restore Williamson Act subventions.

## Animal Services

- SUPPORT efforts to protect local revenue sources designated for use by the Animal Services Department; i.e., animal licensing, fines and fees.
- SUPPORT efforts to protect or increase local control and flexibility over the scope and level of animal services.
- SUPPORT efforts to protect against unfunded mandates in animal services or mandates that are not accompanied by specific revenue sources which completely offset the costs of the new mandates, both when adopted and in future years.
- SUPPORT efforts to ensure full funding of State animal services mandates.
- SUPPORT efforts to protect and/or increase County flexibility to provide animal services consistent with local needs and priorities.
- SUPPORT efforts to preserve the integrity of existing County policy relating to Animal Services (e.g., the Animal Control Ordinance and land use requirements).

## Child Support Services

- SUPPORT the establishment of a statewide electronic registry for the creation and release/satisfaction of real property liens to collect delinquent child support payments.
- SUPPORT amendment of current code to clarify that county recorders may not charge a fee or tax to record any child support agency document.
- SUPPORT efforts that require the Department of Child Support Services to provide documents, forms, and letters in digitized format and distribute by any means that the department determines is feasible, including email, website and SMS texting.
- SUPPORT efforts that create new child support enforcement methods or enhance existing child support enforcement methods. OPPOSE efforts that eliminate or restrict existing child support enforcement methods.
- SUPPORT efforts to ensure that any reduction in funding for the department of Child Support Services at the state level is not passed down as a reduction to the local child support agency.
- SUPPORT efforts to increase funding for the child support program. OPPOSE efforts to reduce funding for the child support program.
- OPPOSE efforts that restrict the child support agency from access to customer data.

## Climate Change

- SUPPORT legislative and administrative efforts that: address the impacts of climate change; support climate adaptation and resilience efforts; address the disproportionate impacts that some communities bear because they are located near large industrial facilities; reduce exposure to toxic air pollutants and greenhouse gases; and study and recognize the health impacts of global and regional climate change.
- SUPPORT efforts to ensure that the implementation of AB 32 and successor bills results in harmony between the greenhouse gas reduction target created by the Air Resources Board for each regional/local agency, the housing needs numbers provided by the state Department of Housing and Community Development pursuant to housing element law, and the Sustainable Communities Strategy developed through the Regional Transportation Plan processes.
- SUPPORT efforts that favor allocation of funding and infrastructure from the California Climate Investments Program to jurisdictions within whose boundaries are the largest emitters of greenhouse gas, have vulnerable and/or disadvantaged communities that are disproportionately affected by climate change and environmental pollution, have Natural



Community Conservation Plans or similar land conservation efforts that will address climate change and have demonstrated a local commitment to climate protection (e.g. established emissions reduction targets, prepared Climate Action Plans, etc.).

- SUPPORT revisions to the Public Resources Code and the Air Resources Board's Investment Plans to provide California Climate Investments funding for the conservation of natural lands, parks and open space through fee title acquisition as well as easements.
- SUPPORT efforts to expand eligible expenditures of the Climate Investments to investments in accessible transit/transportation systems (serving seniors, disabled, veterans) which result in more efficient service and corresponding reductions in greenhouse gas production, and in investments in infrastructure and programs to promote active transportation, particularly bicycling and walking.
- OPPOSE changes to the California Environmental Protection Agency's protocols for designating disadvantaged communities which result in a reduction in the number or size of disadvantaged communities in Contra Costa County prioritized for receipt of California Climate Investment funds.
- SUPPORT efforts to ensure life-cycle costs are considered when planning new projects in the state.
- SUPPORT policies that support the autonomy of community choice aggregators (CCAs) in policymaking and decision-making. OPPOSE legislation and regulatory policies that unfairly disadvantage CCAs or CCA customers or reduce or undermine local decision-making autonomy by the CCA or its governing board.
- SUPPORT continuing development of local renewable energy resources and supply, including protection of local autonomy to administer energy efficiency programs and install and utilize integrated distributed energy resources, and SUPPORT effective leveraging of energy efficiency programs tailored to address local needs and concerns.
- SUPPORT complete transparency of all energy procurement practices, stranded costs, and departing load charges; fair competition in statewide energy markets for community choice aggregators (CCAs) and municipal or other publicly owned utilities; legislation and regulatory policies that protect CCA customers from improper cost allocation; and OPPOSE legislation that conflicts with or diminishes CCA procurement autonomy.
- SUPPORT requirements for investor-owned and public energy utilities to provide local governments with energy usage data for all facilities - residential, commercial, and industrial - in their jurisdictions for purposes of allowing the local governments to develop inventories of greenhouse gas emissions within their boundaries.

- SUPPORT legislation and programs that provide technical, financial, and governance resources for local governments to use in addressing current and anticipated impacts of rising water levels caused by a warming climate.

## The Delta

- PROTECTION and RESTORATION of a healthy sustainable Delta ecosystem including adequate water quality, inflow and outflow, and water supply, to support fisheries, wildlife and habitat in perpetuity and managing or eradicating invasive species.
- RESPECT and SAFEGUARD Delta Counties' responsibilities related to land use, water resources, flood management, tax revenues, public health and safety, economic development, agricultural stability, recreation, and environmental protection in any projects, policies, or operations.
- SUPPORT rehabilitation, improvement, and maintenance of levees throughout the Delta.
- SUPPORT the Delta pool concept, in which the common resource provides quality freshwater supply to all Delta users, requiring mutual responsibility to maintain, restore, and protect the common resource.
- REPRESENT and include local government in any governance structures for the Delta.
- OPPOSE isolated conveyance.

## Economic Development

- ADVOCATE for jobs-oriented incentive programs for jurisdictions that have met their Regional Housing Needs Assessment (RHNA) numbers. State legislators will continue to advance bills that make it easier to build housing, but it would also benefit the county to have those streamlining measures apply to jobs-oriented development like office and advanced manufacturing as well.
- SUPPORT an amendment to the California Competes Tax Credit program guidelines to consider qualifying low-income census tracts within unincorporated areas of a county in the enhanced scoring category.

## Elections

- SUPPORT full state reimbursement for state mandates imposed upon local registrars by the Secretary of State, including special state elections.

## Emergency Preparedness, Emergency Response

- ADVOCATE for disaster recovery funding that addresses tax backfills, debris removal, resiliency, forest health, and economic assistance. SUPPORT legislation that will improve forest management and emergency communications systems.
- SUPPORT legislation that would give local agencies more authority to train volunteers, provide funding for Community Emergency Response Training (CERT), and help clean-up oil spills without taking on additional legal liability.
- SUPPORT funding for defensible space inspections, community wildfire risk mitigation, and for hardening of existing homes from wildfire exposure.
- SUPPORT legislation that would provide a sales tax exemption for public safety related apparatus and/or equipment over a certain value (e.g., \$250,000).
- SUPPORT exemptions from CEQA for wildfire risk mitigation projects and Essential Services Facilities (ESF) such as fire stations, and exemptions from fees and air quality limitations for emergency generators at fire stations.
- SUPPORT measures that evaluate and implement changes to EMS regulations that hinder the transport of patients to alternate destinations, provide community paramedicine programs, and engage in other programs that alter or enhance the delivery of 911 emergency ambulance transport.
- SUPPORT a permanent resolution to the reimbursement for air ambulance providers.
- ENSURE that development impact fees provide adequate funding for public safety facilities and ongoing operations.
- SUPPORT legislation to improve telephone (cellular and voice over internet protocol) access or back-up during emergencies.

## Flood Control and Clean Water

- SUPPORT legislation that would improve integration of planning between member agencies of an Integrated Regional Water Management Planning group, thereby increasing multi-benefit projects.
- SUPPORT legislation that would require Metropolitan Planning Organizations to integrate local and regional stormwater needs into their regional transportation planning process.

## General Revenues/Finance

- SUPPORT the State's effort to balance its budget through actions that do not adversely affect County revenues, services or ability to carry out its governmental responsibilities.
- OPPOSE any state-imposed redistribution, reduction or use restriction on general purpose revenue, sales taxes or property taxes unless financially beneficial to the County.
- OPPOSE efforts to limit local authority over transient occupancy taxes (TOT).
- OPPOSE any efforts to increase the County's share-of-cost, maintenance-of-effort requirements or other financing responsibility for state-mandated programs, absent new revenues sufficient to meet current and future program needs.
- SUPPORT efforts to ensure that Contra Costa County receives its fair share of state allocations.
- SUPPORT efforts to receive reimbursement for local tax revenues lost pursuant to sales and property tax exemptions approved by the Legislature and the State Board of Equalization.
- SUPPORT continued efforts to reform the state/local relationship in a way that makes both fiscal and programmatic sense for local government and conforms to the adopted 2010 CSAC Realignment Principles, with an emphasis on maximum flexibility for counties to manage the existing and realigned discretionary programs.
- SUPPORT a reduction in the 2/3rd vote requirement to 55% voter approval for locally-approved special taxes that fund health, education, economic, stormwater services, library, transportation and/or public safety programs and services.
- SUPPORT efforts to authorize counties to impose forfeitures for violations of ordinances, as currently authorized for cities.
- SUPPORT efforts to redefine the circumstances under which commercial and industrial property is reassessed to reduce the growing imbalance between the share of overall property tax paid by residential property owners versus commercial/industrial owners.
- SUPPORT efforts to reduce County costs for Workers' Compensation, including the ability to control excessive medical utilization and litigation.
- SUPPORT state actions that maximize federal and state revenues for county-run services and programs.



- SUPPORT legislative compliance with both the intent and language of Proposition 1A.
- OPPOSE efforts of the state to avoid state mandate claims through the practice of repealing the statutes, then re-enacting them. SUPPORT timely, full payments to counties by the state for programs operated on their behalf or by mandate.
- SUPPORT full state participation in funding the County's retiree and retiree health care unfunded liability.
- OPPOSE the establishment of specific or stricter standards for the use of personal services contracts by counties that would make contracting with community-based organizations more difficult for counties.

## Health Care

- SUPPORT state action to increase health care access and affordability.
- SUPPORT Medi-Cal reimbursement rate increases to incentivize providers to participate in the program.
- SUPPORT Medi-Cal reimbursement rate increases through Proposition 56 funding to provide quality reproductive health care services.
- SUPPORT reimbursement for a maximum of 2 visits taking place on the same day at one location if the patient suffers illness/ injury requiring additional diagnosis/ treatment, or if the patient has a medical visit and mental health or dental visit.
- SUPPORT actions that address provider shortages (including physicians, particularly specialists, and nurses). Innovative programs, such as loan forgiveness programs, should be expanded.
- SUPPORT efforts that implement comprehensive systems of care, including case management, for frequent users of emergency care and those with chronic diseases and/or dual (or multiple) diagnoses.
- SUPPORT efforts that provide sufficient time for detailed data gathering of current safety net funding in the system and the impact of any redirection of funds on remaining county responsibilities.
- SUPPORT measures that maximize federal reimbursement from Medicaid and S-CHIP.

- SUPPORT state action to implement a Medi-Cal waiver in a manner that maximizes the drawdown of federal funds for services and facilities, provides flexibility, and ensures that counties receive their fair share of funding.
- SUPPORT efforts to extend Drug Medi-Cal and Minor Consent Medi-Cal Coverage to incarcerated youths, many of whom are in custody due to drug related crimes.
- SUPPORT funding and policy changes to support coverage of medically necessary alcohol and substance use related disorder treatment at the same level as other medical conditions.
- SUPPORT legislation that extends the restrictions and prohibitions against the smoking of, and exposure to, tobacco products; and the promotion of cessation among young people and adults.

SUPPORT legislation and administrative actions that further align a statewide regulatory framework for the commercial cannabis industry and that continue to authorize local jurisdictions to adopt more restrictive measures to protect the health, safety and welfare of their residents. OPPOSE legislation and state regulation that seeks to weaken or eliminate local control over the commercial cannabis industry.

- SUPPORT funding and policy changes to support population-based chronic disease prevention efforts such as the creation and funding of a State Wellness Trust.
- SUPPORT funding and policy changes to support developing a workforce with gerontological expertise to manage the exponential growth in the chronically ill aging population.
- SUPPORT efforts that would advance a Health-In-All-Policies approach to policy work done across the County. This implies consideration of how health is influenced by the built environment and a connection with land use planning and development.
- SUPPORT ongoing study of the health impacts of global and regional climate change and ongoing countywide mitigation and adaptation efforts.
- SUPPORT efforts that would preserve the nature and quality and continuity of care associated with safety net services historically provided at the local level, such as the California Children's Services (CCS) and Child Health and Disability Prevention (CHDP) programs, which are being transitioned into managed care at the state level.
- SUPPORT efforts that promote aging in place through the utilization of long-term supports and services and caregiver support services.

- SUPPORT increasing the level of funding for Long-Term Services and Supports (LTSS) and Home and Community Based Services (HCBS) to meet the increase in cost to provide services and to meet the tremendous increase in the aging population.
- SUPPORT maintaining level or enhanced funding, streamlined processes and greater flexibility for use of state and federal funding to respond to Public Health Emergency Preparedness initiatives including Pandemic Influenza, emerging diseases, and continued funding for all categories related to Public Health Preparedness.
- SUPPORT increased funding and policy changes for Tuberculosis (TB) prevention and treatment, to reflect the increased risk of transmission faced across the Bay Area.
- SUPPORT increased funding for the public health infrastructure, capacity and prevention services as outlined in the public health components of the Affordable Care Act and the National Prevention and Public Health Fund.
- SUPPORT recognition of Local Public Health Departments as an authorized provider for direct billing reimbursement related to the provision of Immunization, Family Planning, HIV, STD and TB services.
- SUPPORT the reversal of the pre-emption language regarding local Menu-Labeling that is included in the Affordable Care Act.
- SUPPORT enhanced funding and capacity for public health programs.
- SUPPORT efforts to strengthen needle exchange programs as part of an overall program to combat the spread of HIV and other diseases.
- SUPPORT legislative efforts to reduce or eliminate lead and toxic substances in consumer products, particularly those used by infants and children.
- SUPPORT funding, policy and programs dedicated to suicide, injury and violence prevention.
- SUPPORT funding and policy changes to support program development aimed at reducing the misuse of prescription drugs, most especially opioids, and increase prevention and treatment of opioid disorders to eliminate overdoses and combat the opioid epidemic.
- SUPPORT funding and legislation to restrict the sale and use of powdered alcohol and other similar products marketed to youth; restrictions on advertising of marijuana products targeting youth and near places frequented by youth or alcohol and other drug treatment facilities.

- SUPPORT necessary County infrastructure and adequate funding related to education, regulatory, testing and enforcement functions associated with cannabis regulatory controls.
- SUPPORT legislation to tax certain beverages that contain added sugars.
- SUPPORT legislation and efforts that support healthy meals, adequate meal time, and increased physical activity/education for school-age children.
- SUPPORT efforts to dedicate funding that sustains and expands non-infrastructure *Safe Routes to School* programs that educate students, parents, and school staff about safe walking and bicycling to school.
- SUPPORT efforts to address the underlying determinants of health and health equity, such as housing and prevention of displacement, educational attainment and livable wage jobs, and accessible transportation.
- SUPPORT legislation that extends the restrictions and prohibitions against the smoking of, and exposure to, marijuana products in various places, including, but not limited to, places of employment, school campuses, public buildings, day care facilities, multi-family housing, health facilities, alcohol and other drug treatment facilities, and homeless shelters.
- SUPPORT efforts to seek a state ban on electronic devices that deliver flavored e-liquids as well as the e-juice itself.

## Homeless Services

- SUPPORT the continuation and expansion of funding for affordable housing, homelessness assistance and prevention programs, and strategic local and regional responses to homelessness, including resources that support the County's compliance with federal and state anti-homelessness and anti-poverty initiatives and requirements.
- SUPPORT increasing and maintaining affordable housing stock and housing stability by way of supporting funding, policy, or regulations that promote housing for the most vulnerable low, very low, and extremely low-income households, including the production and preservation of various housing types and the protection of stable housing for vulnerable persons experiencing homelessness.
- SUPPORT removal of barriers in planning processes, regulatory frameworks, funding programs, healthcare access, and policy to promote increased innovation and data-driven approaches to addressing homelessness, and housing affordability, with the goal of eliminating discrimination or arbitrary treatment of individuals based on housing status, income, or other household characteristics.



- SUPPORT wide variety of housing types and formats, for all persons regardless of personal characteristic or status, and the equitable distribution and access to affordable units and holistic services, particularly for vulnerable individuals, in line with evidence-based practices

## Human Services

### Older Adults

- SUPPORT efforts that promote individual choice by easing access to In Home Supportive Services (IHSS).
- SUPPORT efforts to allow counties to use alternative IHSS reassessment approaches including, but not limited to, telephonic reassessments.
- SUPPORT fully funding the administration of IHSS.
- SUPPORT the creation of funding opportunities and policies which promote the development of aging-friendly communities.
- SUPPORT efforts that strengthen the capacity and funding of Adult Protective Services (APS) to address all forms of abuse and neglect.
- SUPPORT efforts to provide respite for caregivers.
- SUPPORT continued and improved funding to expand services for older adults and people with disabilities.
- SUPPORT efforts to promote safety of social workers.

### Safety Net Programs

- OPPOSE legislative and budgetary actions that result in reduced level of services to families, children, adults and seniors, or that lead to preemption of local control.
- SUPPORT continuous investment in safety net programs, including the California Earned Income Tax Credit (Cal EITC) and the Supplemental Security Income/State Supplementary Payment (SSI/SSP) Program.
- SUPPORT fully funding administrative costs for administering programs.

- SUPPORT efforts to improve and expand access to food, including emergency food assistance networks (e.g. local food banks, and food pantries), increasing the amount and flexibility of CalFresh, and other local assistance programs.
- SUPPORT efforts to streamline benefit applications, align verifications between programs, and have the same appointment for multiple applications.
- SUPPORT efforts that would ease data sharing and coordination of care across safety net programs, including those administered by the Health Department, such as WIC.
- SUPPORT efforts to ease access to Medi-Cal and services provided through the program.
- SUPPORT actions which would expand eligibility to CalWORKS.
- SUPPORT efforts to increase access to employment training programs and subsidized work programs for vulnerable populations, including access to community colleges.
- SUPPORT establishing a General Assistance Program with a state share of funding.
- SUPPORT efforts to create whole family care through a more comprehensive safety net of services that enable families to be stable and have economic opportunities.
- SUPPORT research that describes and assesses local service needs and gaps.

### *Child Welfare Services*

- SUPPORT continued and improved funding for services that stabilize children and families in the foster care system.
- SUPPORT full funding of efforts to support the Continuum of Care Reform.
- SUPPORT initiatives which would expand benefits and support for reunified families.

### *Early Childhood Development*

- SUPPORT legislation to expand early childcare, education, and other holistic approaches.
- SUPPORT increased funding for preschool and early learning.

### *Violence Prevention*

- SUPPORT efforts that seek to address the impact of gun violence, domestic violence, sexual assault, human trafficking, elder abuse and child abuse.

- SUPPORT efforts that seek to prevent the underlying causes of all forms of violence and invest in upstream strategies.
- SUPPORT efforts to increase cross-agency and cross-system collaboration on interpersonal violence cases, including the sharing of confidential or protected information in multidisciplinary team settings.

### Immigration

- SUPPORT the expansion of benefits and services for immigrants, refugees, and asylum seekers. SUPPORT efforts to amend Medi-Cal expansion to include Deferred Action for Childhood Arrivals (DACA) youth and state efforts to support DACA youth.
- SUPPORT efforts to increase language access and culturally responsive social services for all immigrants.
- OPPOSE any changes that may penalize immigrants for using vital public benefits they are legally allowed to access.

## **Justice Systems**

- SUPPORT legislation to restore pretrial detainee access to federal health benefits.
- SUPPORT legislation raising the maximum age limit for juvenile court jurisdiction, allowing youths to remain on juvenile probation supervision through age 24, as opposed to the current age limit of 21, with an elevated focus on rehabilitation and restorative justice.
- SUPPORT legislation that provides local flexibility and funding to implement justice diversion programs.
- SUPPORT legislation that seeks to curb metal theft by making it easier for law enforcement agencies to track stolen metals sold to scrap dealers.
- SUPPORT legislation that provides a practical and efficient solution to addressing the problem of abandoned and trespassing vessels and ground tackle.
- OPPOSE legislation that would shift the responsibility of parolees from the state to the counties without adequate notification, documentation and funding.
- SUPPORT legislation that will help counties implement 2011 Public Safety Realignment as long as the proposal would: provide for county flexibility, eliminate redundant or unnecessary reporting, and would not transfer more responsibility without funding.

- SUPPORT legislation that will combat the negative impact that human trafficking has on victims in our communities, including the impact that this activity has on a range of County services and supports, and support efforts to provide additional tools, resources and funding to help counties address this growing problem.
- SUPPORT legislative reform of current bail provisions that will replace reliance on money bail with a system that incorporates a pretrial risk assessment tool and evidence-based pretrial release decisions. ADVOCATE for funding for any new or revised responsibilities, including the assessment and supervision of people charged with crimes.

## **Land Use/Community Development/Natural Resources**

- ASSIST in the development and preservation of low and moderate income housing through support of programs that: 1) provide access to federal, state and local financing, 2) ensure timely review of residential projects, 3) provide financial and/or regulatory incentives where feasible and appropriate to offset or reduce the costs of affordable housing development, and 4) promote the re-use of existing publicly-owned assets.
- MAINTAIN local agency land use authority.
- SUPPORT ways to streamline overall compliance with State legislation, while opposing efforts to expedite a particular development project.
- ENSURE Contra Costa residents of all income categories have access to adequate housing.
- GROW more jobs countywide, particularly in those parts of the County with the longest commutes and most acute jobs-housing imbalance.
- SUPPORT historically under-invested communities in their equitable economic growth.
- IDENTIFY new or enhanced revenue to support residents' quality of life.
- ESTABLISH, fund and support locally-controlled resource permitting to streamline economic development activities and conserve and recover species and the habitats upon which they depend, natural resources, watersheds and open space.

## **Library**

- SUPPORT State financial assistance in the operation of public libraries, including full funding of the Public Library Fund (PLF) and the California Research and Education Network (CalREN).



- SUPPORT State bonds for public library construction.
- SUPPORT continued funding for the California Library Literacy and English Acquisition Services Program, which provides matching funds for public library adult literacy programs that offer free, confidential, one-on-one basic literacy instruction to English-speaking adults who want to improve their reading, writing, and spelling skills.

## **Telecommunications and Broadband**

- SUPPORT preservation of local government ownership and control of the local public rights-of-way and ensure reasonable compensation for their use.
- SUPPORT continued funding for Public, Educational and Government Access (PEG) channels to provide local community access and benefits, and increase flexibility in the use of PEG funds.
- ENSURE nondiscriminatory treatment of Public, Educational and Government Access Channels by Cable System Operators.
- SUPPORT the expansion of broadband (high speed internet service) to drive economic development and job opportunities, support county service delivery, and improve health, education and public safety outcomes for residents.

## **Transportation**

- PROVIDE an integrated, multi-modal transportation system that safely and efficiently meets the transportation needs of all economic and social segments of the County and provides for the transport of goods and services throughout Contra Costa County.
- EMPHASIZE the efficient use of the existing transportation system and cost-effective enhancements to this system. New and emerging policy direction includes an increase in the support for active transportation modes, support for the development of aging-friendly communities, and a decreasing emphasis on automotive capacity expanding projects which increase greenhouse gas production.
- SUPPORT the provision of a safe, reliable, efficient, and accessible transportation system that balances social, environmental, and economic needs of the County.
- SUPPORT increased flexibility in the use of transportation funds.
- Increased regional coordination, while reflecting local input, is necessary for public transit (paratransit and fixed route), roads, trails, advanced mobility technology, and greenhouse gas reduction related projects.

- ENSURE complete life-cycle costs, including an emphasis on environmentally friendly construction resources, are considered during state and local project development.
- SUPPORT improvements in safety throughout the transportation system, specifically for vulnerable users of the system (children, pedestrians, cyclists, etc.).
- PROMOTE the streamlining of transportation safety projects.
- SUPPORT efforts to put in place local planning coordination mechanisms and requirements for state funded or regulated facilities such as schools, roads, courts, jails, and OPPOSE efforts to compromise the County's road authority and the ability to protect public health, safety, and welfare.
- SUPPORT regional, coordinated aviation transportation planning efforts to improve service delivery and to provide options to the surface transportation system for people and goods movement.
- SUPPORT efforts to increase waterborne transport of goods, in particular relative to the San Francisco to Stockton Ship Channel.
- SUPPORT measures to enhance rail safety with an emphasis on; increased state oversight of railroad bridges, funding for first responder training, funding to improve rail safety and prevent rail trespass fatalities, improved regulations for tank car safety standards, and data sharing requirements between state emergency managers, local responders, and rail operators.
- OPPOSE linking transportation funding to housing production.
- OPPOSE reducing or eliminating development impact fees (without secured backfill) in an effort to increase housing production.
- INCREASE requirements for coordination between transportation agencies and utilities.
- SUPPORT funding increases for active transportation projects and planning with an emphasis on facilities and investments that increase the likelihood of a mode shift away from automobiles.
- PROVIDE resources to facilitate the deployment of electric vehicles and electric vehicle charging infrastructure, including funding for vehicles, chargers, and facility upgrades, and improvements to the electric distribution and transmission grids to safely accommodate increased load.

## Veterans

- SUPPORT legislation and budget actions that will continue the state's annual local assistance for County Veterans Service Offices at a minimum of the \$5.6 million level.
- SUPPORT legislation and funding that will provide veterans organizations with resources to make necessary repairs to, or replacement of, their meeting halls and facilities.
- SUPPORT legislation that will improve the timeliness and quality of both VA benefits claim decisions and VA healthcare services.

## Waste Management

- MAINTAIN the County's existing discretionary authority over matters pertaining to waste management, recovery and disposal. ENSURE new or expanded responsibilities are not imposed on the County, either directly or indirectly, without providing statutory authority to guarantee funding to implement actions necessary to adequately enforce or comply.
- SEEK more robust local regulatory and enforcement authority relative to the storage, transport, processing, recovery and disposal of waste within our jurisdictional boundaries.
- SUPPORT efforts to improve recycling markets.
- ENSURE manufacturers are held accountable for proper disposal of non-recyclable products they produce to foster more environmentally sustainable product design.
- SUPPORT statewide regulation and enforcement to limit production or sale of non-recyclable single-use items that negatively impact the environment.

## Workforce Development

- SUPPORT efforts to increase the flexibility of Workforce Development Board spending and ability to partner with community agencies and other county bureaus to increase supportive services and respond to local workforce needs.
- SUPPORT increased teacher training and education, including funding to support employees to obtain a teaching credential.
- SUPPORT efforts that promote training, capacity building and deeper understanding for students, educators and county staff on trauma informed care, interpersonal violence, adverse childhood experiences, and healthy workplaces and schools.