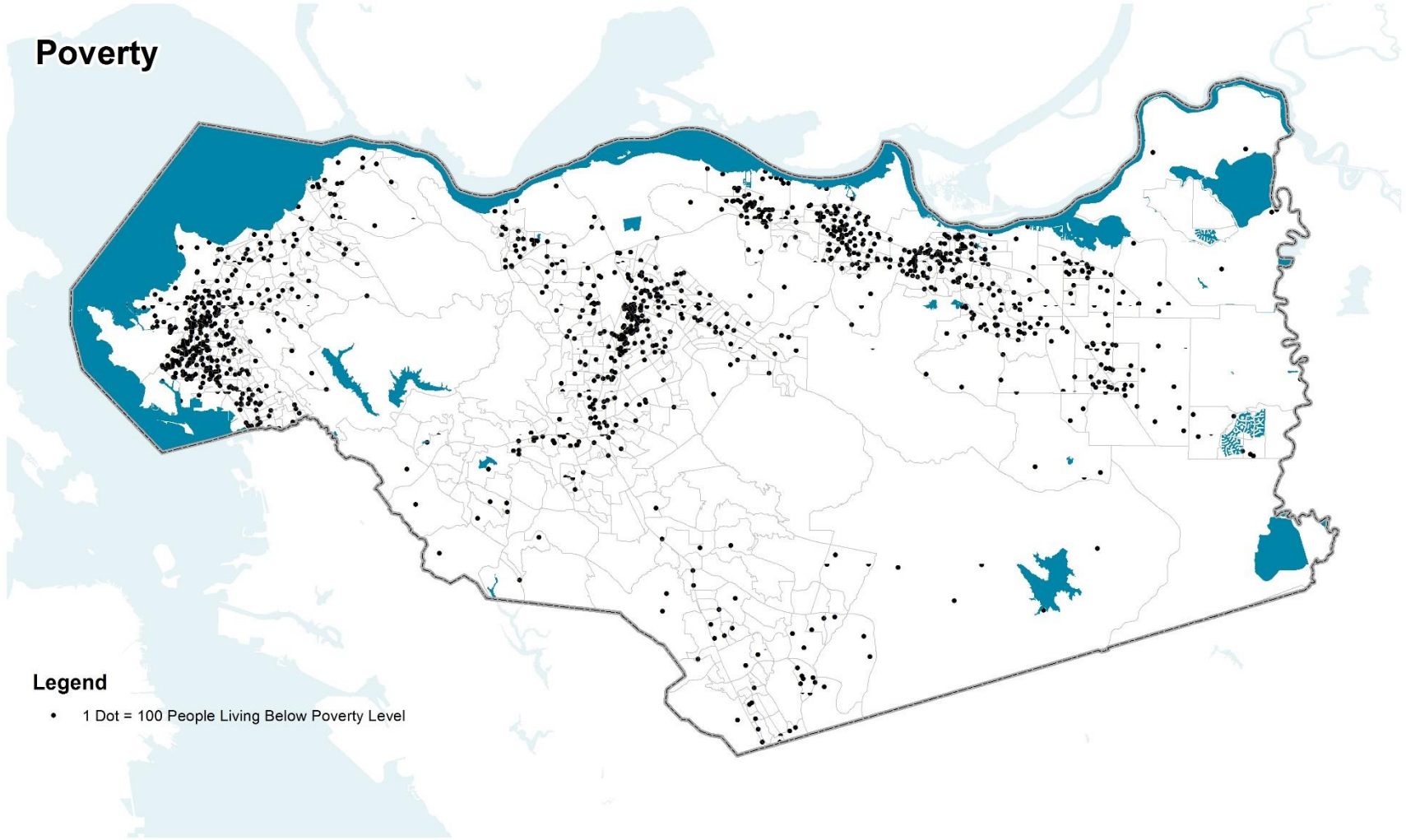


# Attachment A

## Poverty

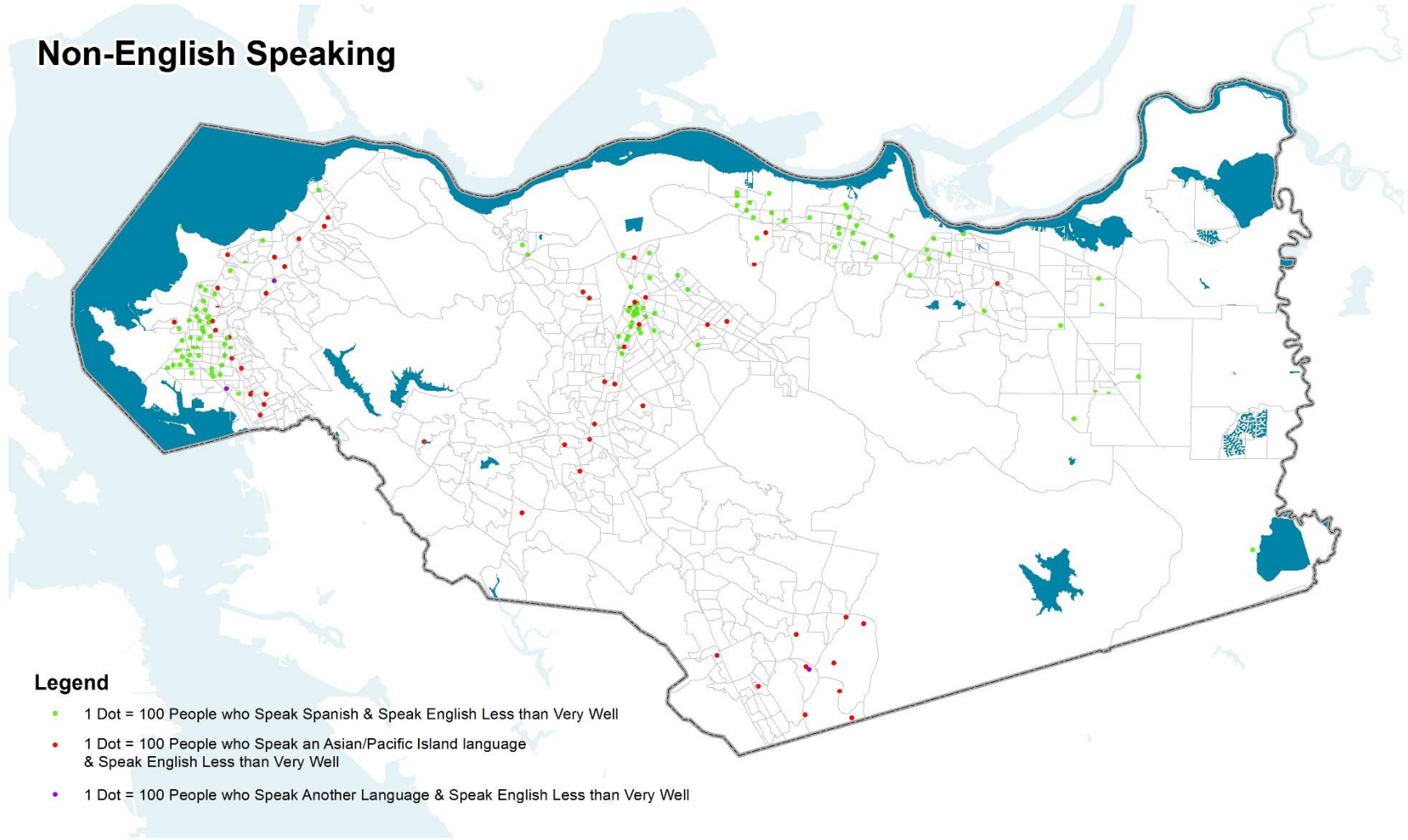


### Legend

- 1 Dot = 100 People Living Below Poverty Level

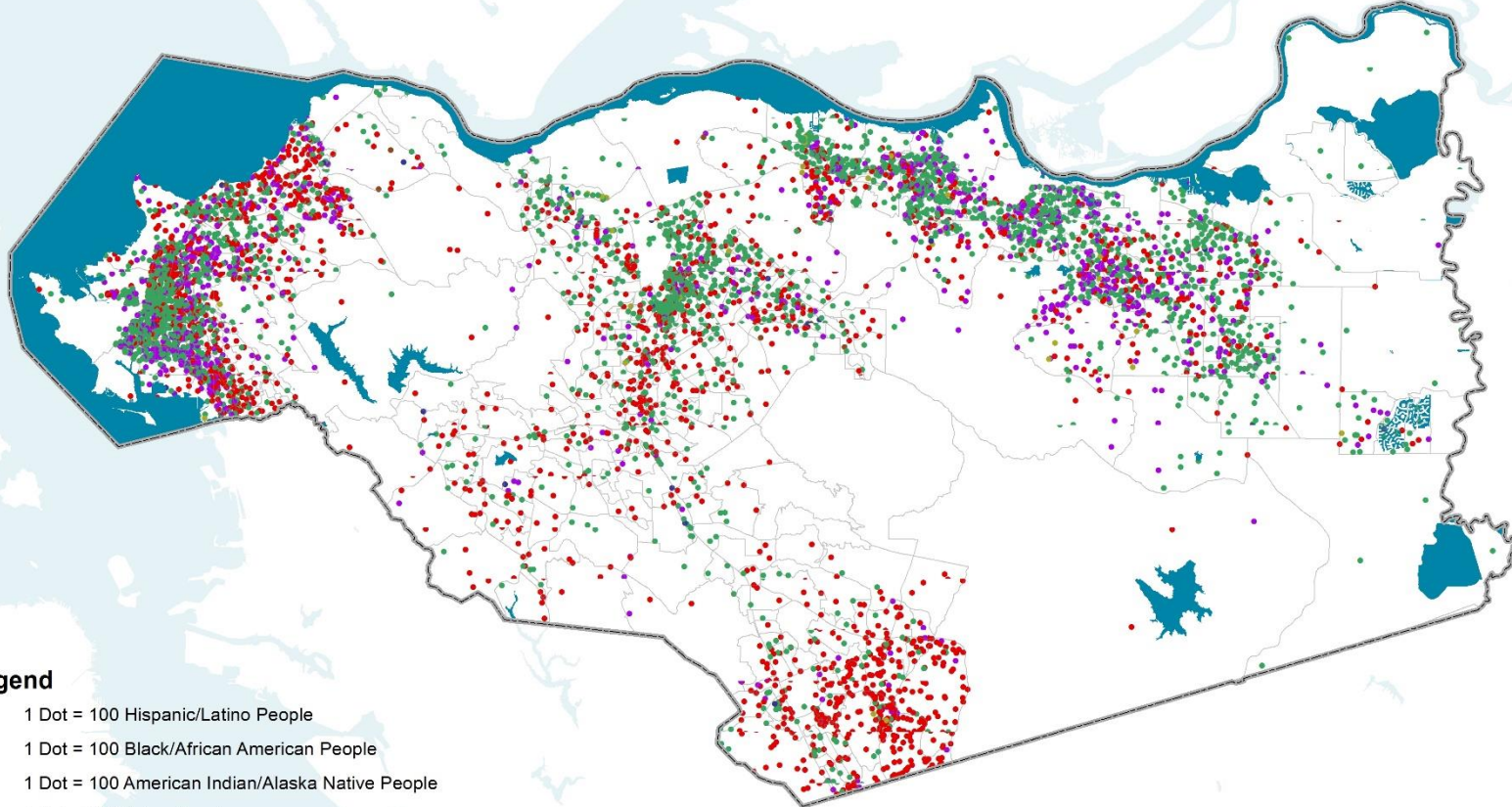
# Attachment A

## Non-English Speaking



# Attachment A

## Race and Ethnicity

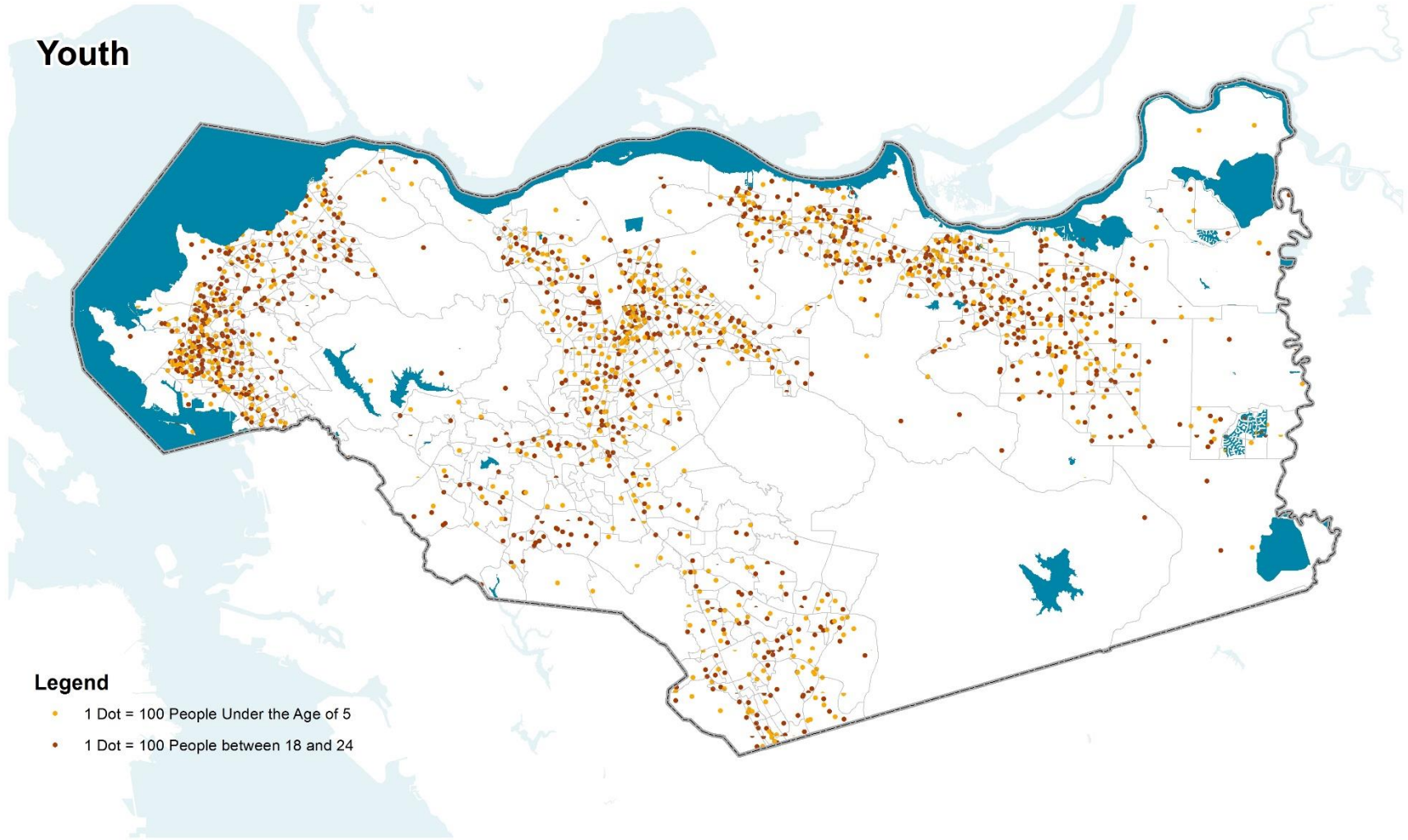


### Legend

- 1 Dot = 100 Hispanic/Latino People
- 1 Dot = 100 Black/African American People
- 1 Dot = 100 American Indian/Alaska Native People
- 1 Dot = 100 Asian People
- 1 Dot = 100 Native Hawaiian/Pacific Islander People
- 1 Dot = 100 Some Other Race People

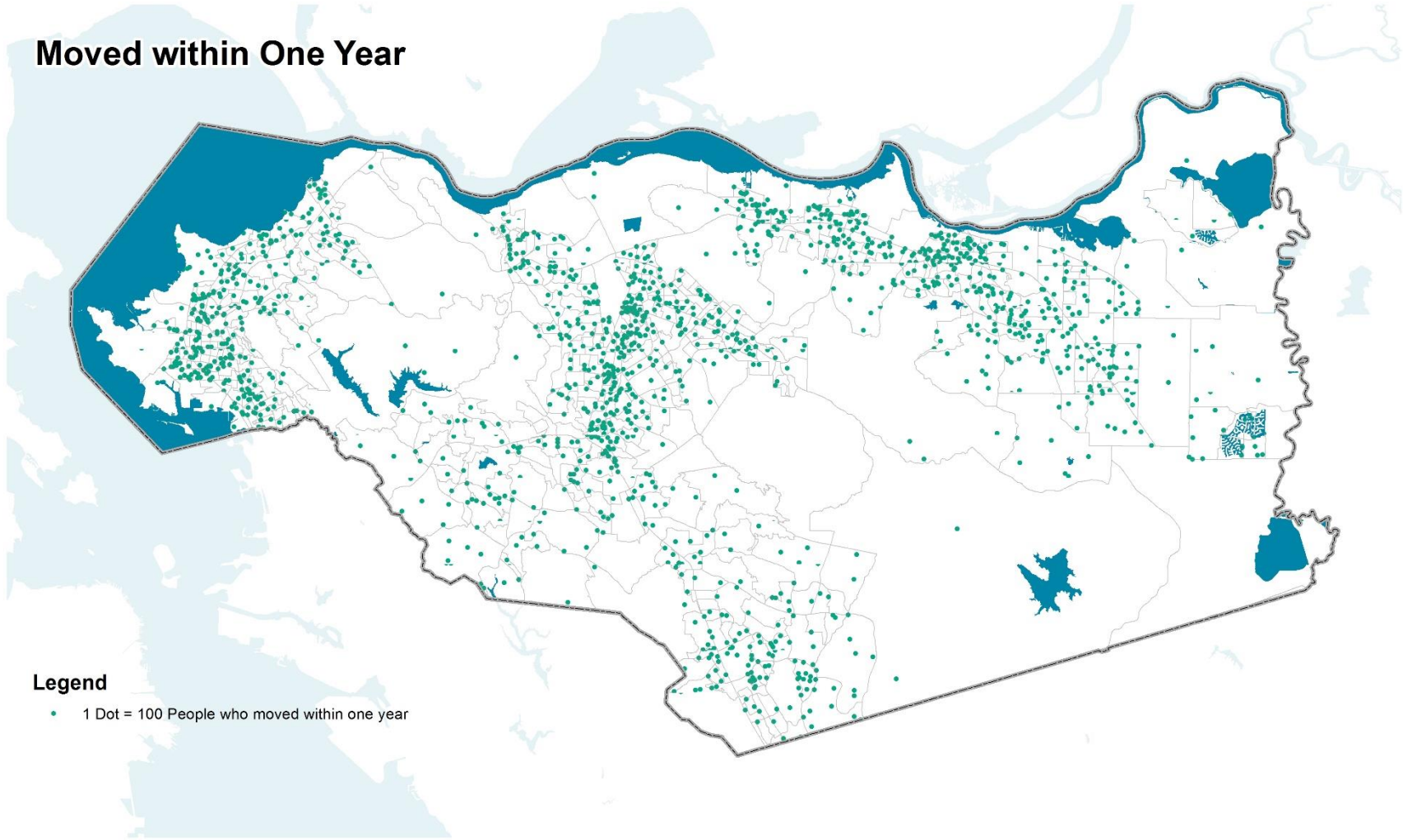
# Attachment A

## Youth



# Attachment A

## Moved within One Year

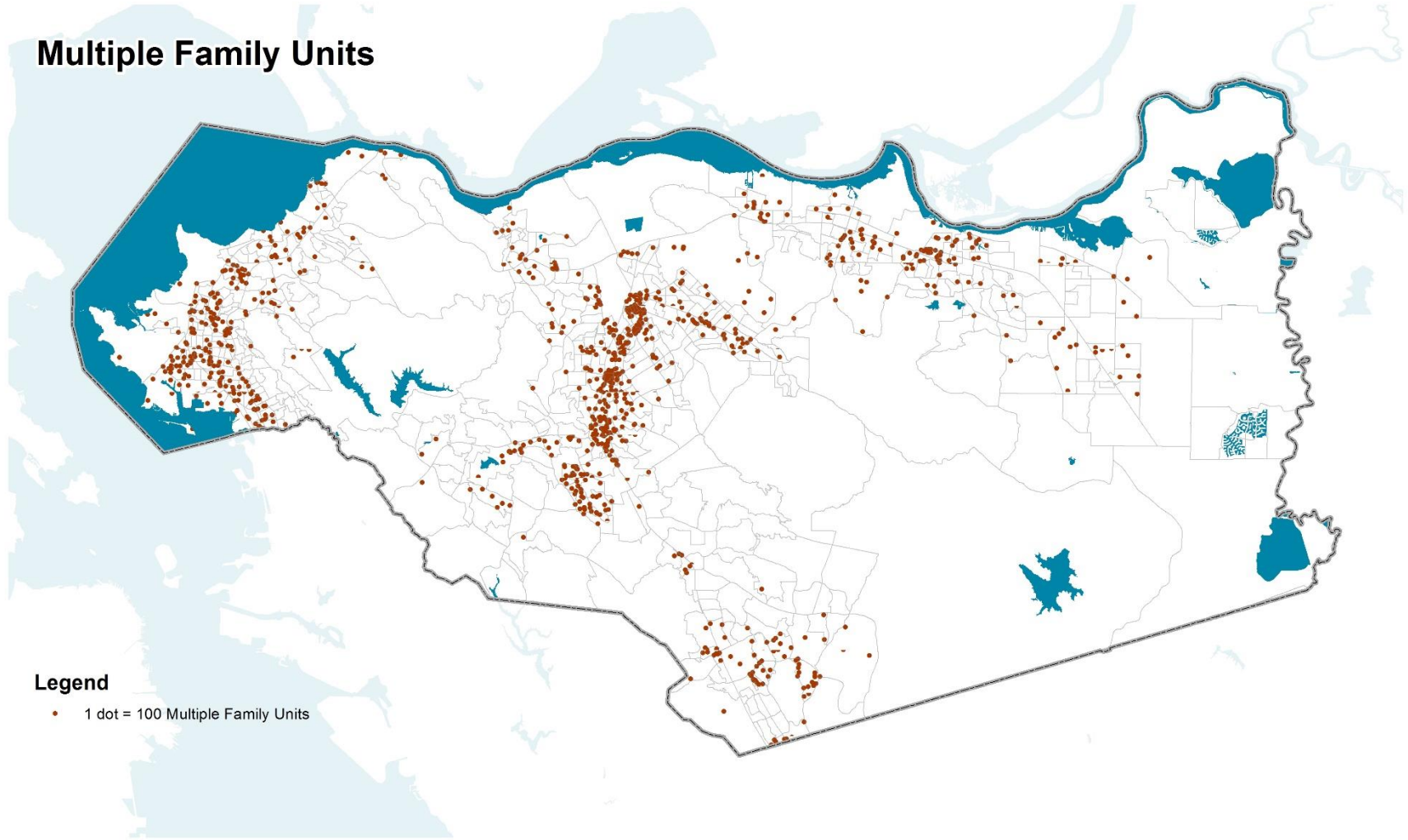


### Legend

- 1 Dot = 100 People who moved within one year

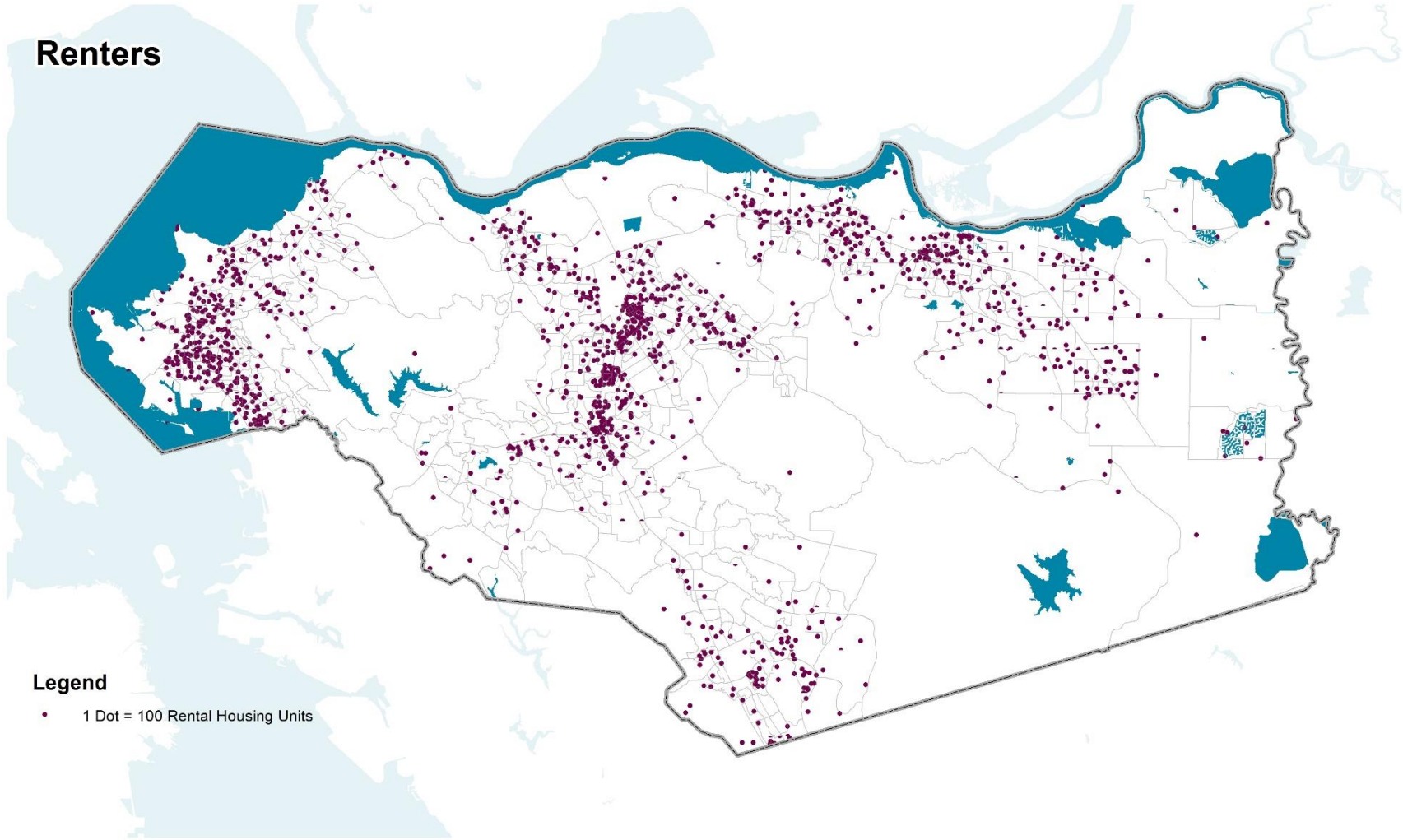
# Attachment A

## Multiple Family Units



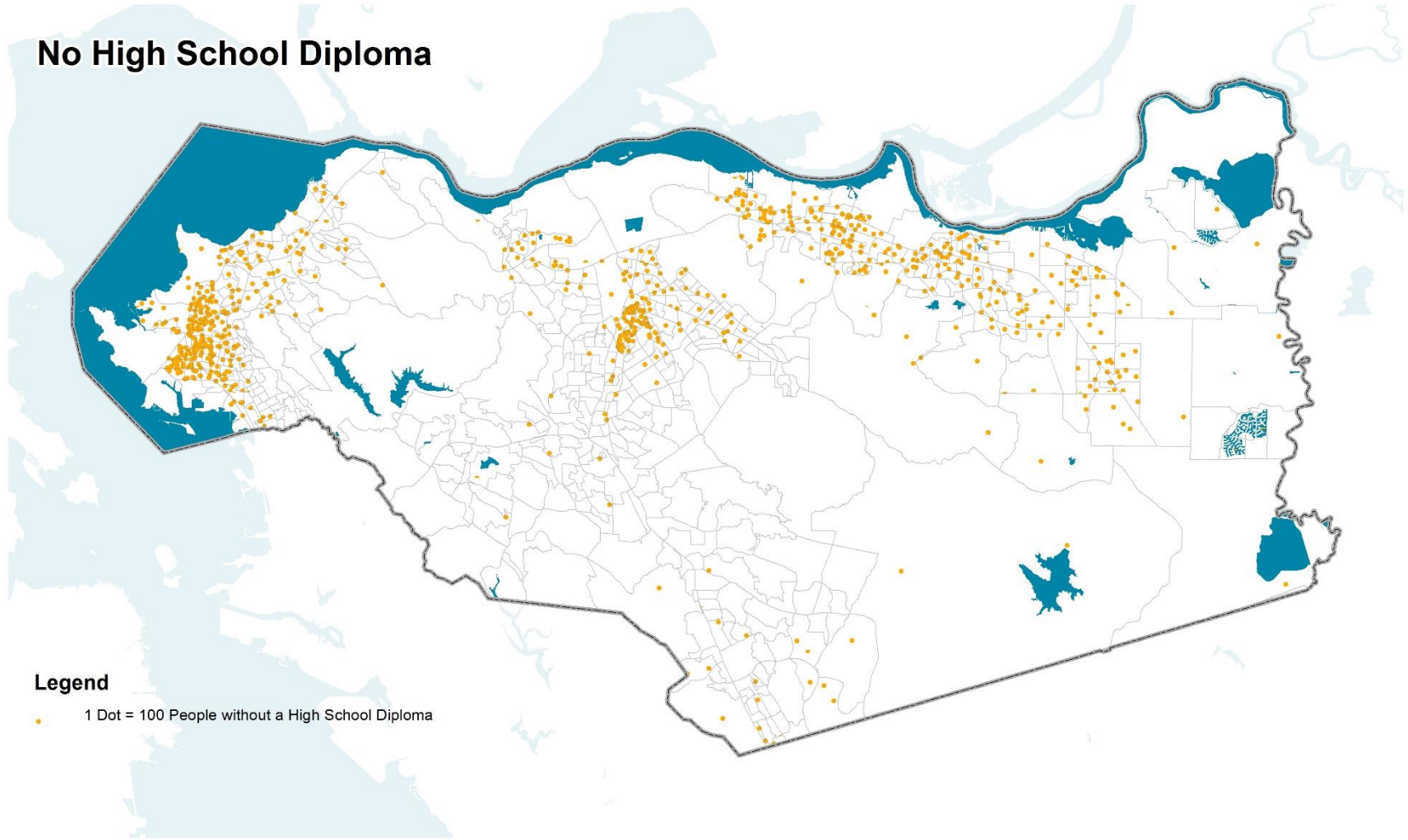
# Attachment A

## Renters



# Attachment A

## No High School Diploma



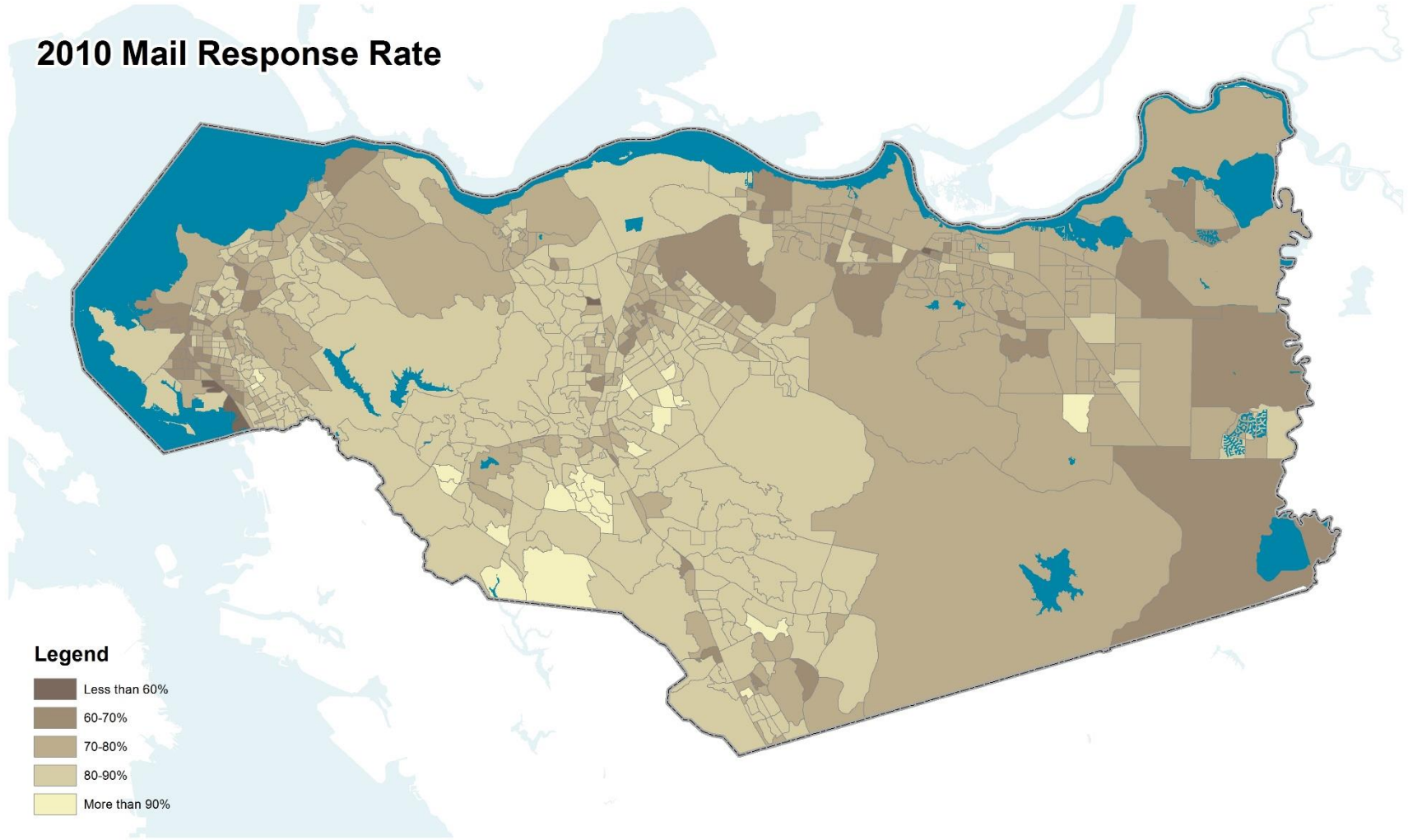
### Legend

• 1 Dot = 100 People without a High School Diploma



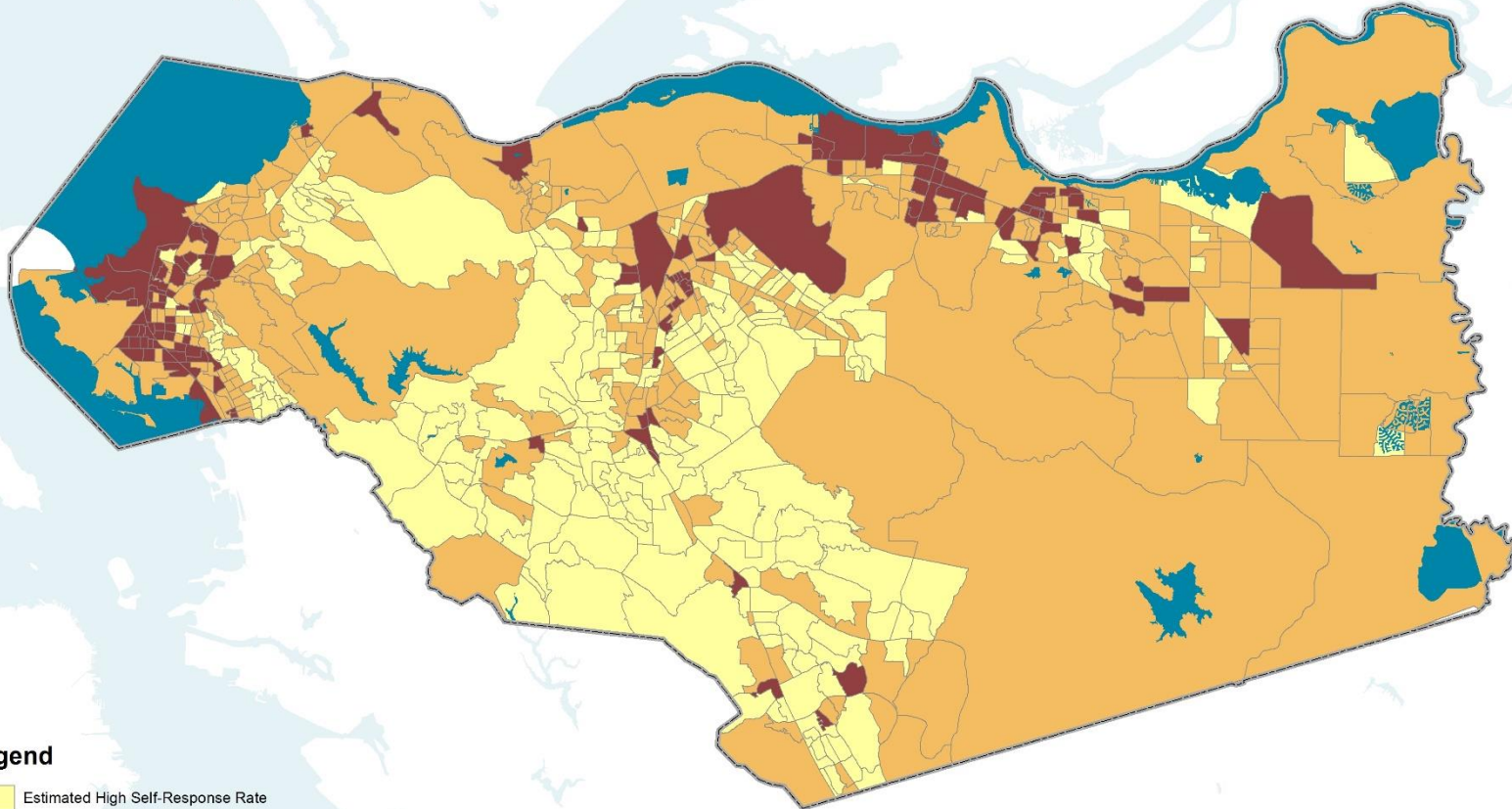
# Attachment A

## 2010 Mail Response Rate



# Attachment A

## 2020 Low Response Score



### Legend

- Estimated High Self-Response Rate
- Estimated Medium Self-Response Rate
- Estimated Low Self-Response Rate