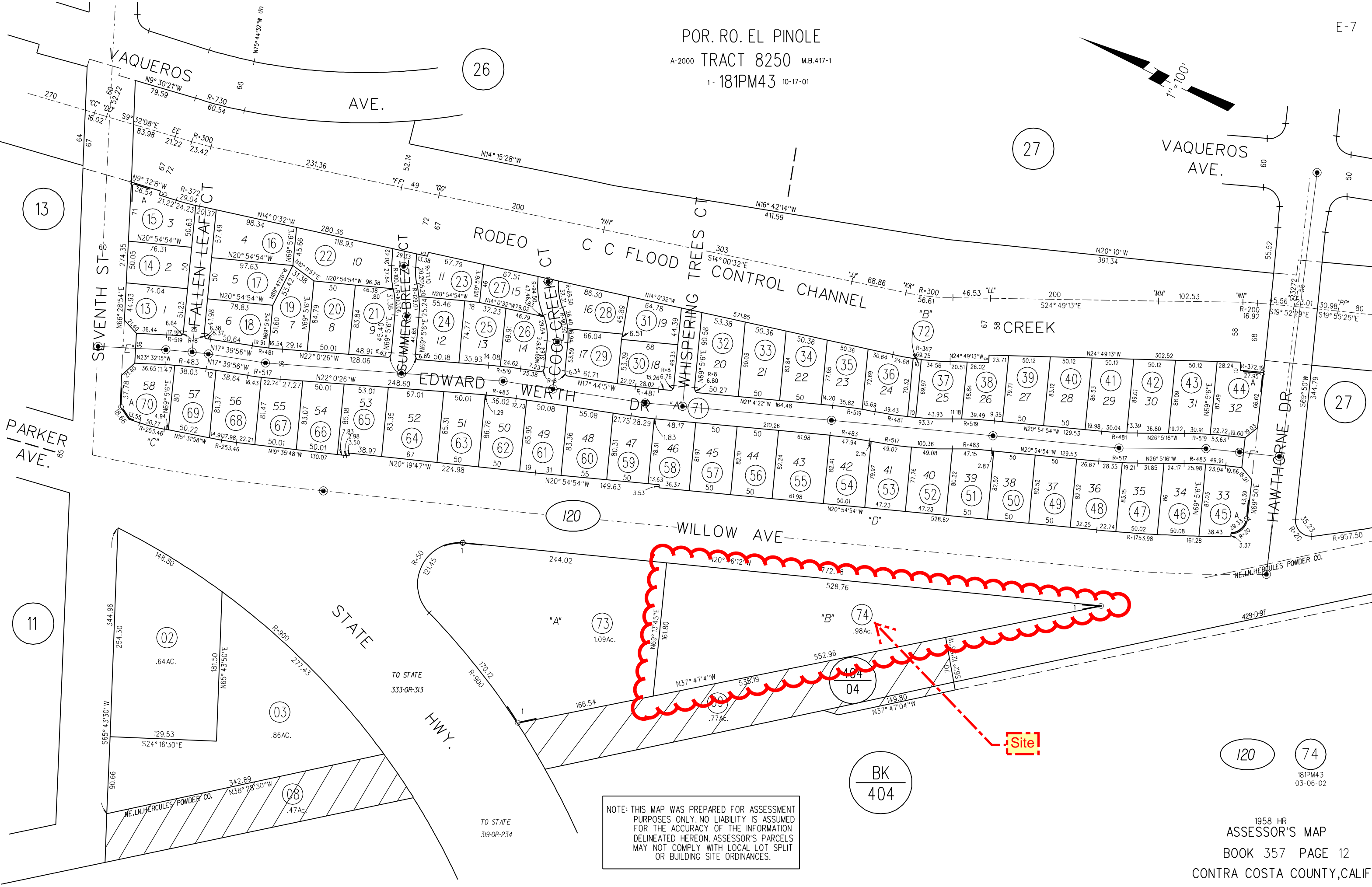
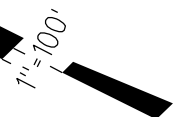


Maps

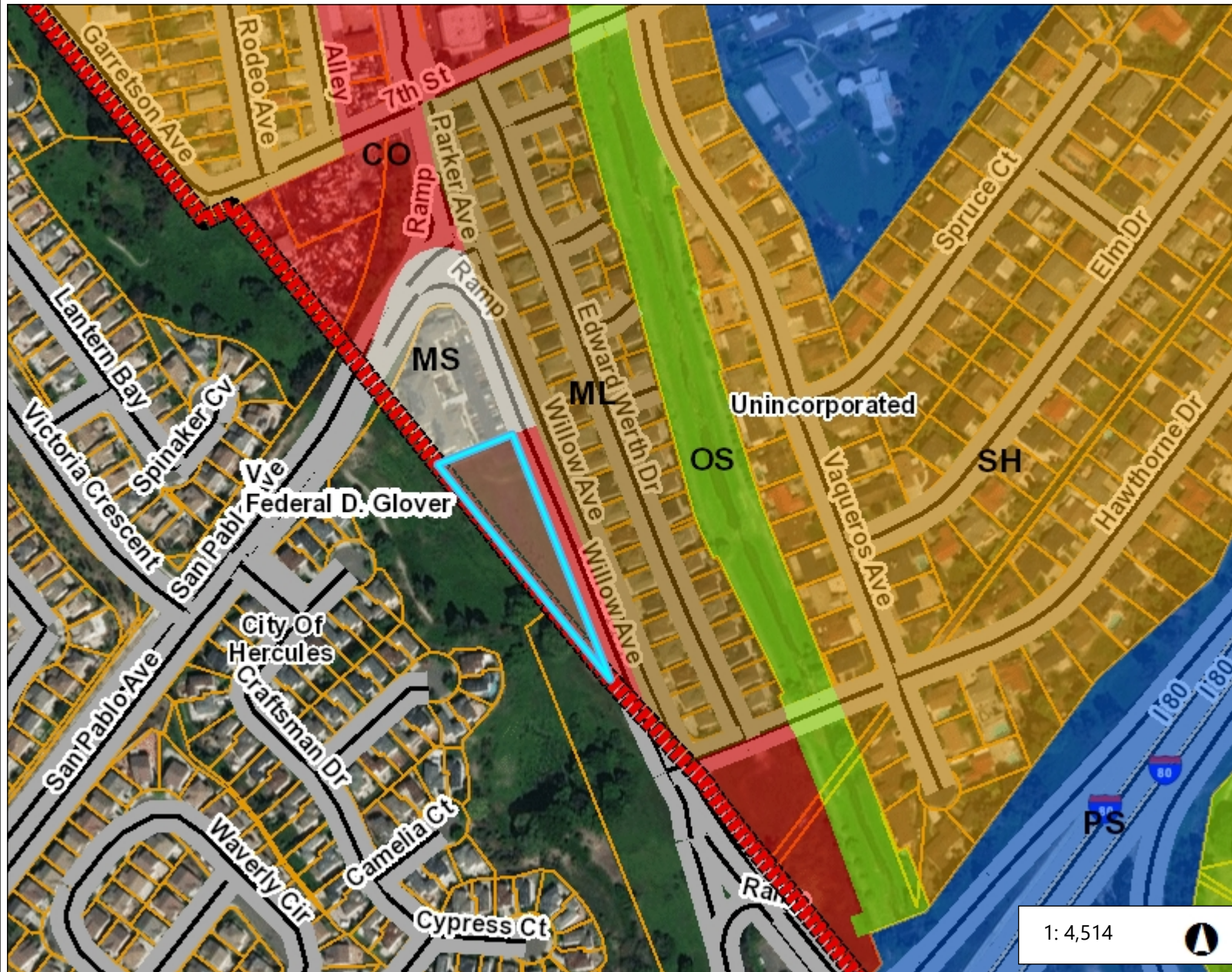
- 1) Parcel Page
- 2) Existing General Plan
- 3) Existing Zoning
- 4) Aerial

POR. RO. EL PINOLE
A-2000 TRACT 8250 M.B.417-1
1-181PM43 10-17-01



NOTE: THIS MAP WAS PREPARED FOR ASSESSMENT PURPOSES ONLY. NO LIABILITY IS ASSUMED FOR THE ACCURACY OF THE INFORMATION DELINEATED HEREON. ASSESSOR'S PARCELS MAY NOT COMPLY WITH LOCAL LOT SPLIT OR BUILDING SITE ORDINANCES.

Existing General Plan (Commercial)



Legend

- Board of Supervisors' Districts
- City Limits
- Unincorporated
- General Plan
 - SV (Single Family Residential - Ver)
 - SL (Single Family Residential - Low)
 - SM (Single Family Residential - Me)
 - SH (Single Family Residential - Hig)
 - ML (Multiple Family Residential - Lc)
 - MM (Multiple Family Residential - Iv)
 - MH (Multiple Family Residential - H)
 - MV (Multiple Family Residential - V)
 - MS (Multiple Family Residential - V)
 - CC (Congregate Care/Senior Housi)
 - MO (Mobile Home)
 - M-1 (Parker Avenue Mixed Use)
 - M-2 (Downtown/Waterfront Rodeo I)
 - M-3 (Pleasant Hill BART Mixed Use)
 - M-4 (Willow Pass Road Mixed Use)
 - M-5 (Willow Pass Road Commercia)
 - M-6 (Bay Point Residential Mixed U)
 - M-7 (Pittsburg/Bay Point BART Sta)
 - M-8 (Dougherty Valley Village Cent)
 - M-9 (Montalvin Manor Mixed Use)
 - M-10 (Willow Pass Business Park A)
 - M-11 (Appian Way Mixed Use)

Notes

Contra Costa County -DOIT GIS

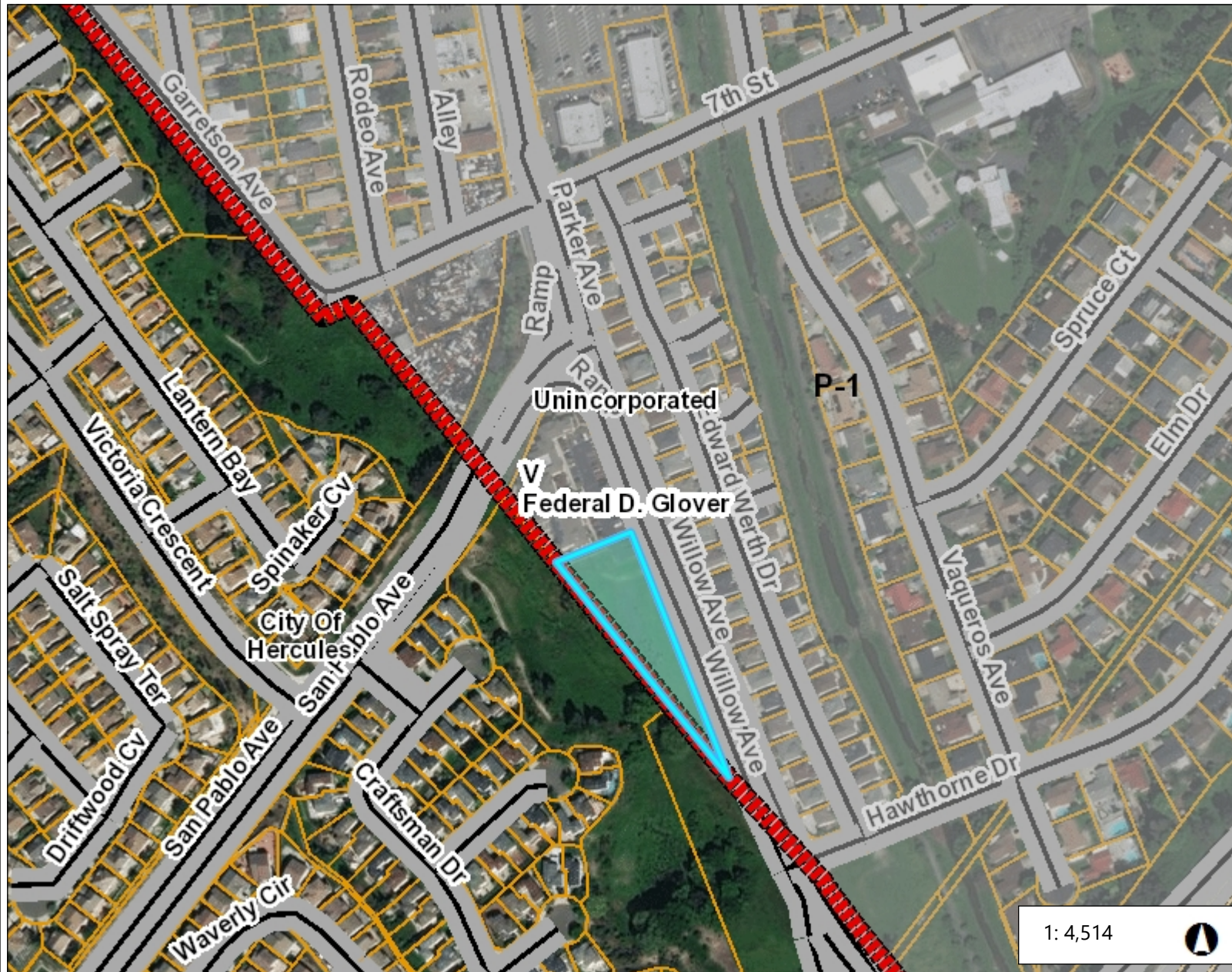
0.1 0 0.07 0.1 Miles

WGS_1984_Web_Mercator_Auxiliary_Sphere

This map is a user generated static output from an Internet mapping site and is for reference only. Data layers that appear on this map may or may not be accurate, current, or otherwise reliable.

THIS MAP IS NOT TO BE USED FOR NAVIGATION

Existing Zoning (P-1, Planned Unit District)



Legend

- Board of Supervisors' Districts
- City Limits
- Unincorporated
- Zoning
 - R-6 (Single Family Residential)
 - R-6, -FH -UE (Single Family Resid Urban Farm Animal Exclusion Com)
 - R-6 -SD-1 (Single Family Resident Hillside Development Combining Di)
 - R-6 -TOV -K (Single Family Reside View Ordinance and Kensington Cc)
 - R-6, -UE (Single Family Residential Exclusion Combining District)
 - R-6 -X (Single Family Residential - Combining District)
 - R-7 (Single Family Residential)
 - R-7 -X (Single Family Residential - Combining District)
 - R-10 (Single Family Residential)
 - R-10, -UE (Single Family Resident Exclusion Combining District)
 - R-12 (Single Family Residential)
 - R-15 (Single Family Residential)
 - R-20 (Single Family Residential)
 - R-20, -UE (Single Family Resident Exclusion Combining District)
 - R-40 (Single Family Residential)
 - R-40, -FH -UE (Single Family Resic Urban Farm Animal Exclusion Com)
 - R-40, -UE (Single Family Residential Exclusion Combining District)
 - R-65 (Single Family Residential)

Notes

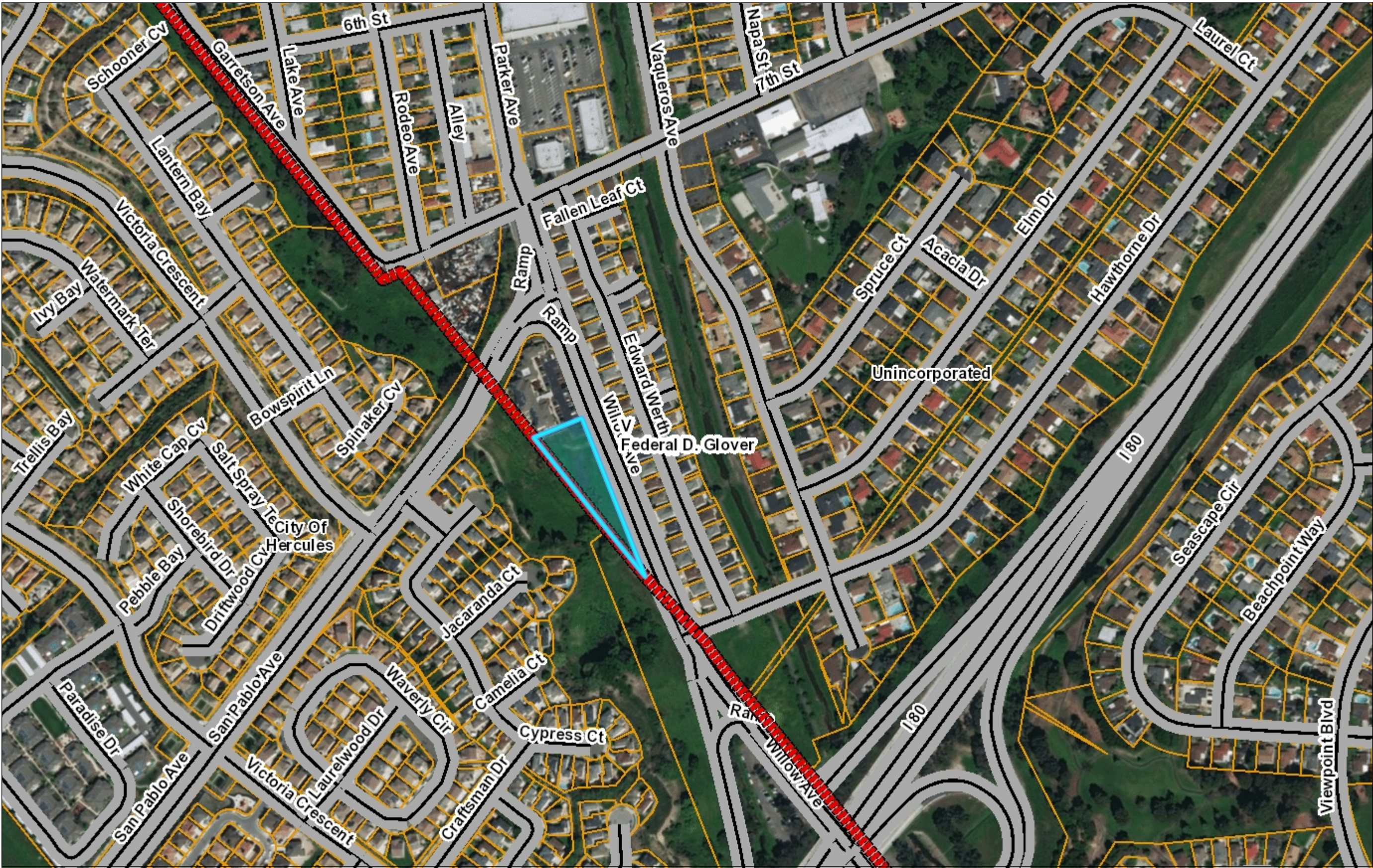
Contra Costa County -DOIT GIS

0.1 0 0.07 0.1 Miles

WGS_1984_Web_Mercator_Auxiliary_Sphere

This map is a user generated static output from an Internet mapping site and is for reference only. Data layers that appear on this map may or may not be accurate, current, or otherwise reliable.

THIS MAP IS NOT TO BE USED FOR NAVIGATION



- Legend
- Board of Supervisors' Districts
 - City Limits
 - Unincorporated
 - Streets
 - Assessment Parcels
 - World Imagery
 - Low Resolution 15m Imagery
 - High Resolution 60cm Imagery
 - High Resolution 30cm Imagery
 - Citations

1: 4,514



This map is a user generated static output from an Internet mapping site and is for reference only. Data layers that appear on this map may or may not be accurate, current, or otherwise reliable.

THIS MAP IS NOT TO BE USED FOR NAVIGATION

Notes

Contra Costa County -DOIT GIS