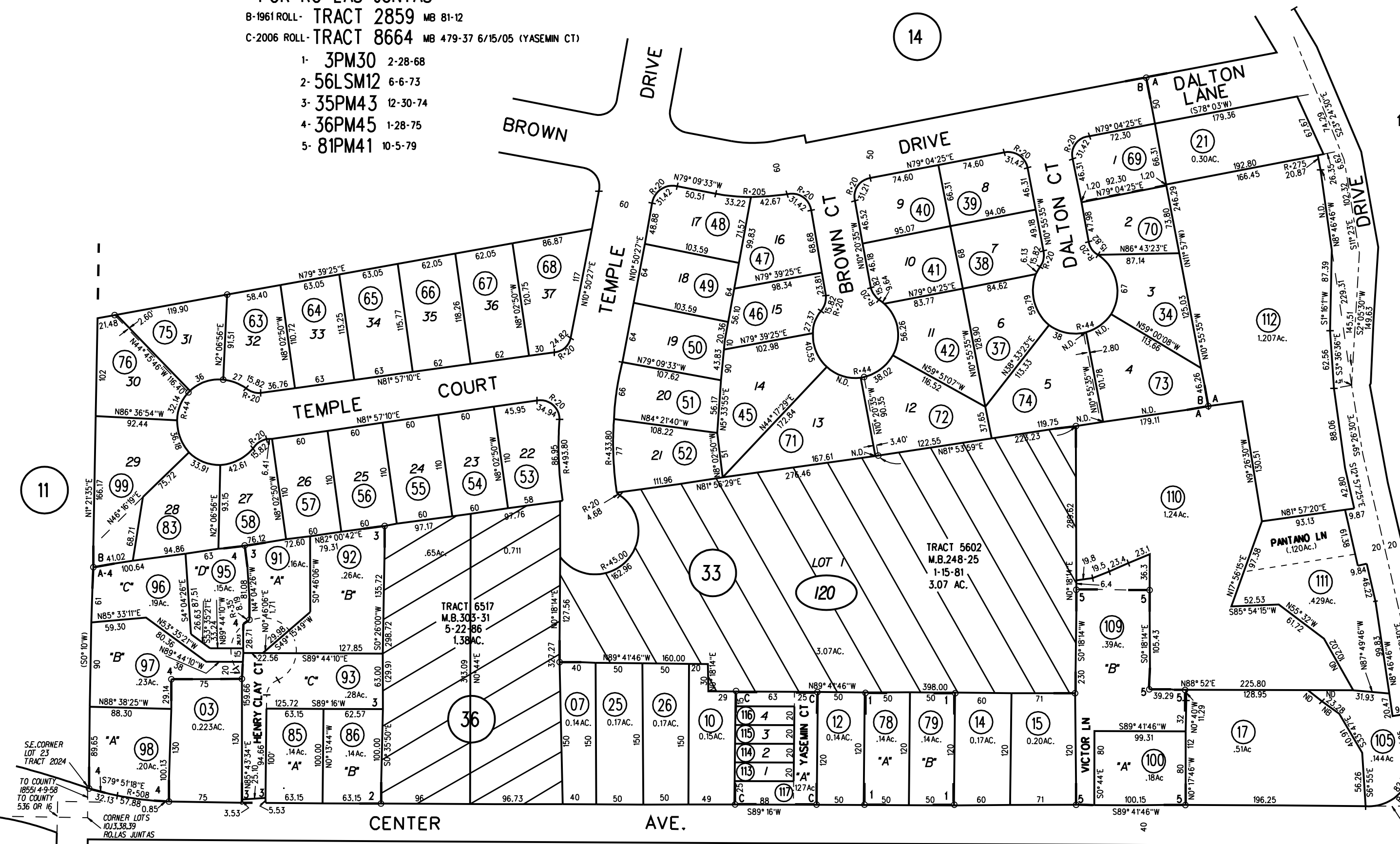


Maps  
(Parcel Map, General Plan, Zoning,  
Aerial Photograph)

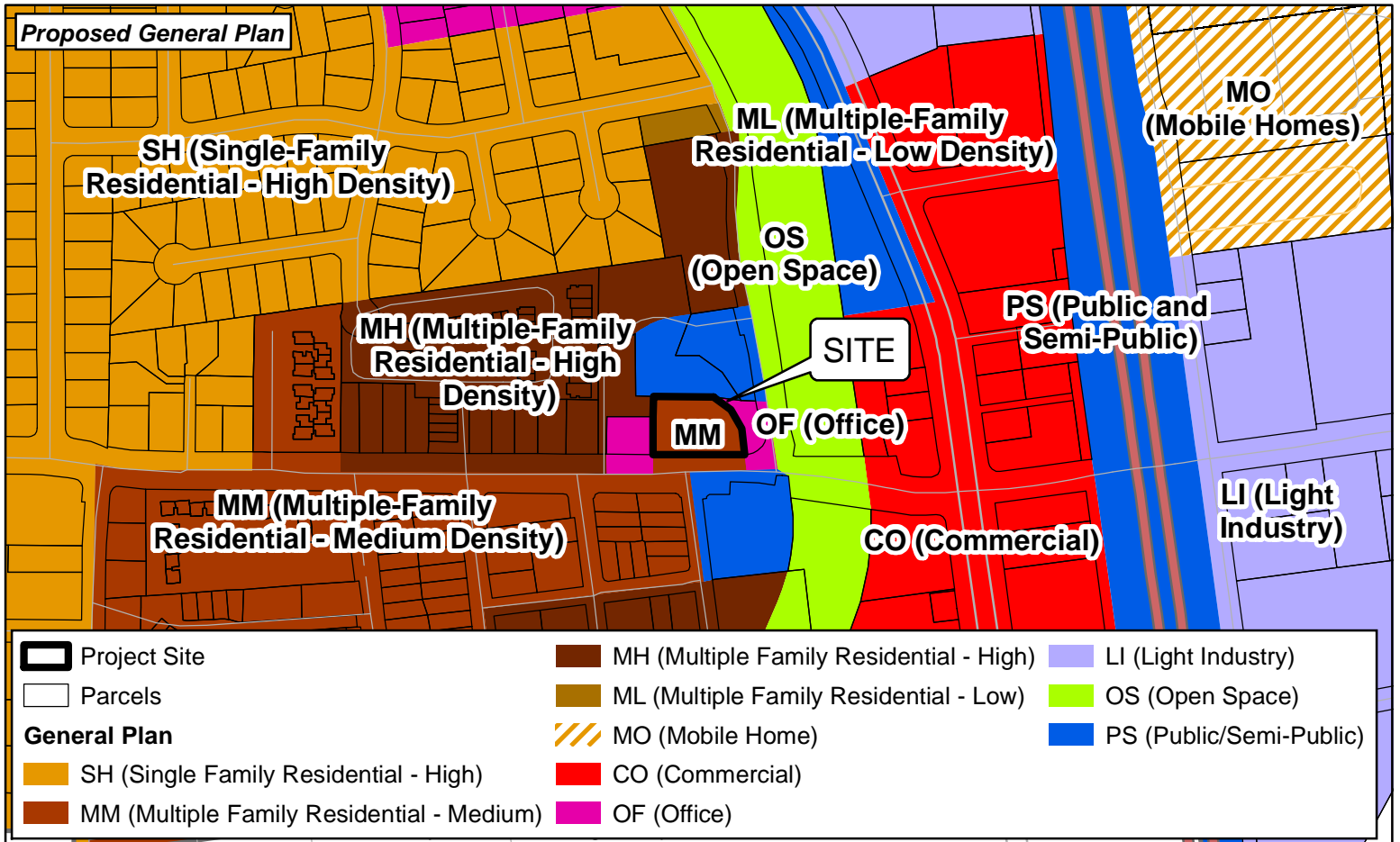
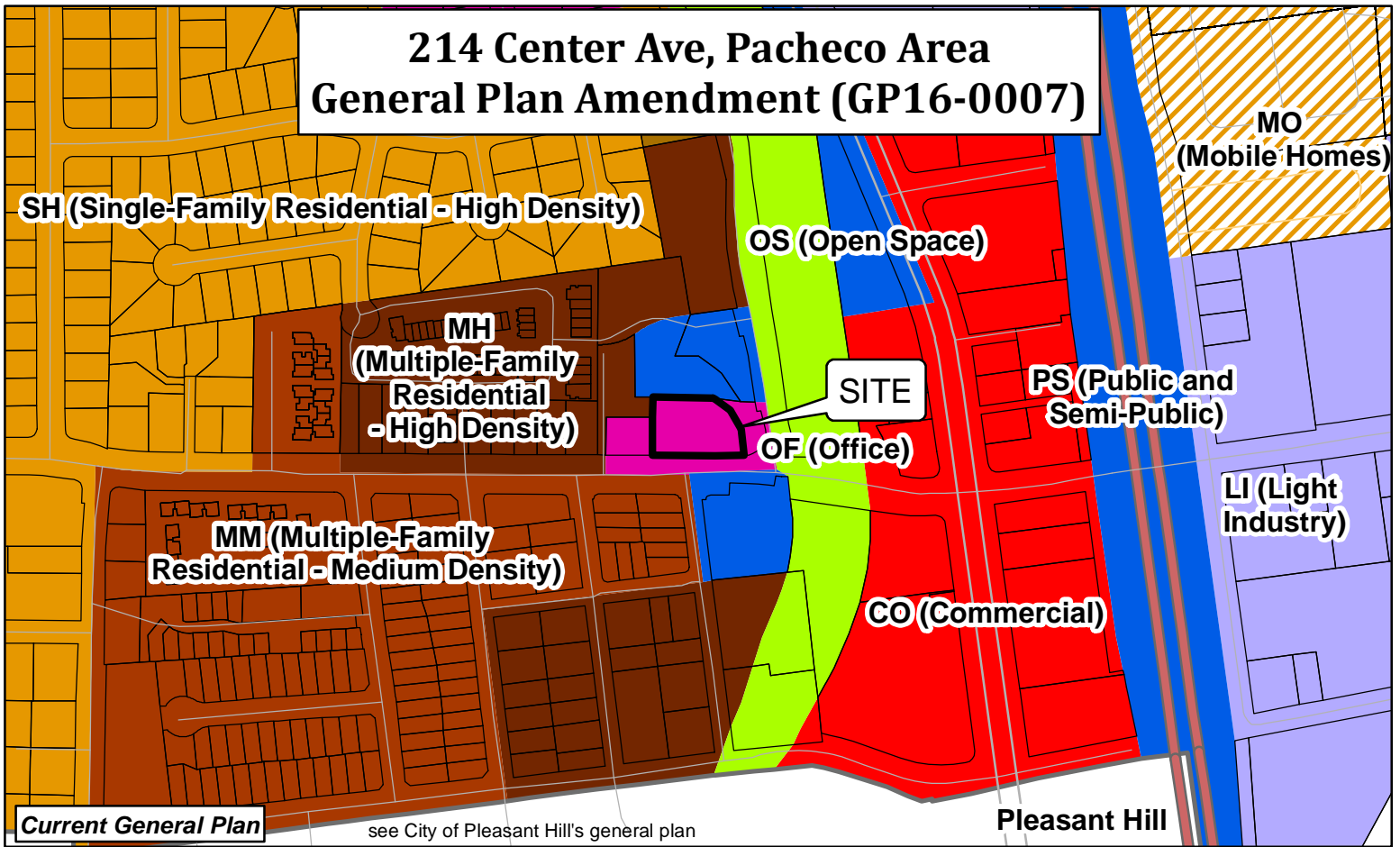
A- POR RO LAS JUNTAS  
B- 1961 ROLL - TRACT 2859 MB 81-12  
C- 2006 ROLL - TRACT 8664 MB 479-37 6/15/05 (YASEMIN CT)

- 1- 3PM30 2-28-68
- 2- 56LSM12 6-6-73
- 3- 35PM43 12-30-74
- 4- 36PM45 1-28-75
- 5- 81PM41 10-5-79



NOTE: THIS MAP WAS PREPARED FOR ASSESSMENT PURPOSES ONLY. NO LIABILITY IS ASSUMED FOR THE ACCURACY OF THE INFORMATION DELINEATED HEREON. ASSESSOR'S PARCELS MAY NOT COMPLY WITH LOCAL LOT SPLIT OR BUILDING SITE ORDINANCES.

# 214 Center Ave, Pacheco Area General Plan Amendment (GP16-0007)



Project Site

Parcels

## General Plan

SH (Single Family Residential - High)

MM (Multiple Family Residential - Medium)

MH (Multiple Family Residential - High)

ML (Multiple Family Residential - Low)

MO (Mobile Home)

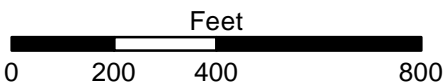
CO (Commercial)

OF (Office)

LI (Light Industry)

OS (Open Space)

PS (Public/Semi-Public)

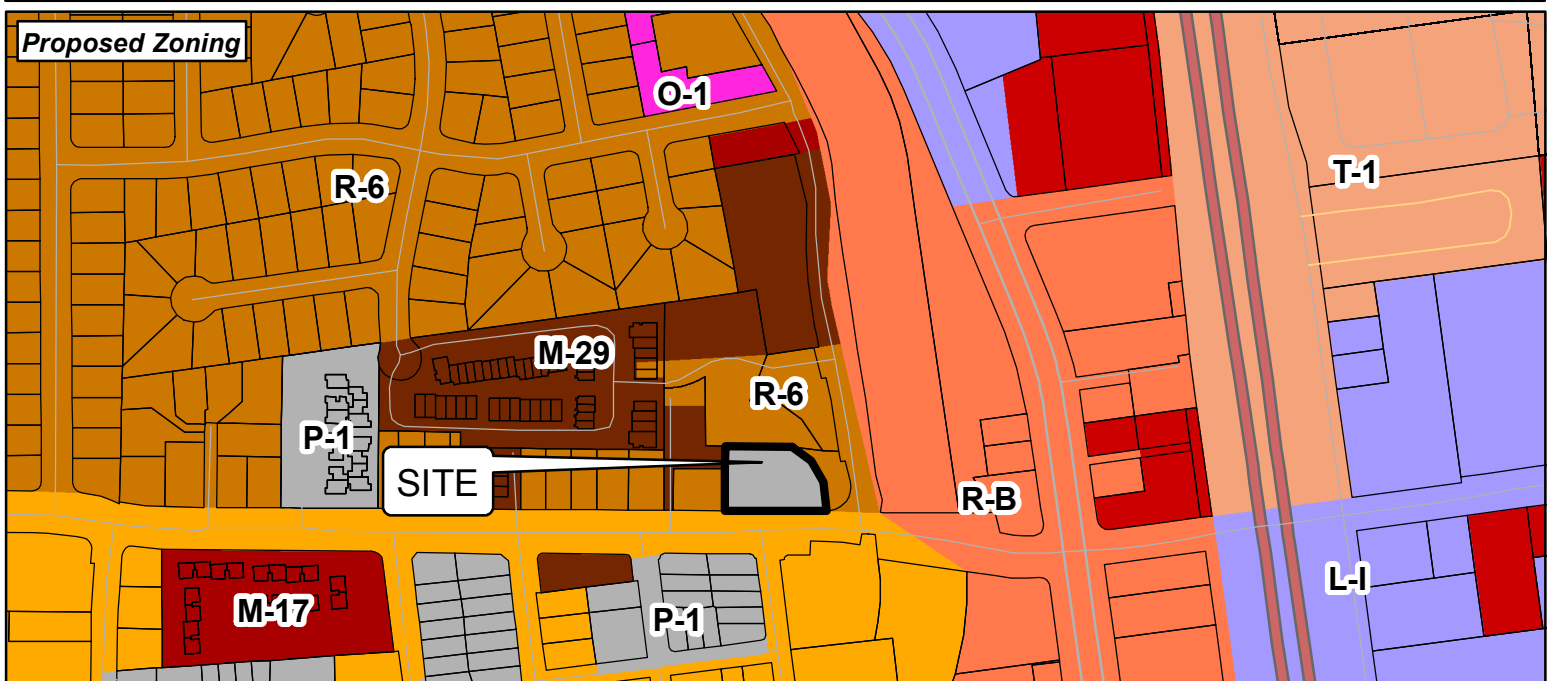
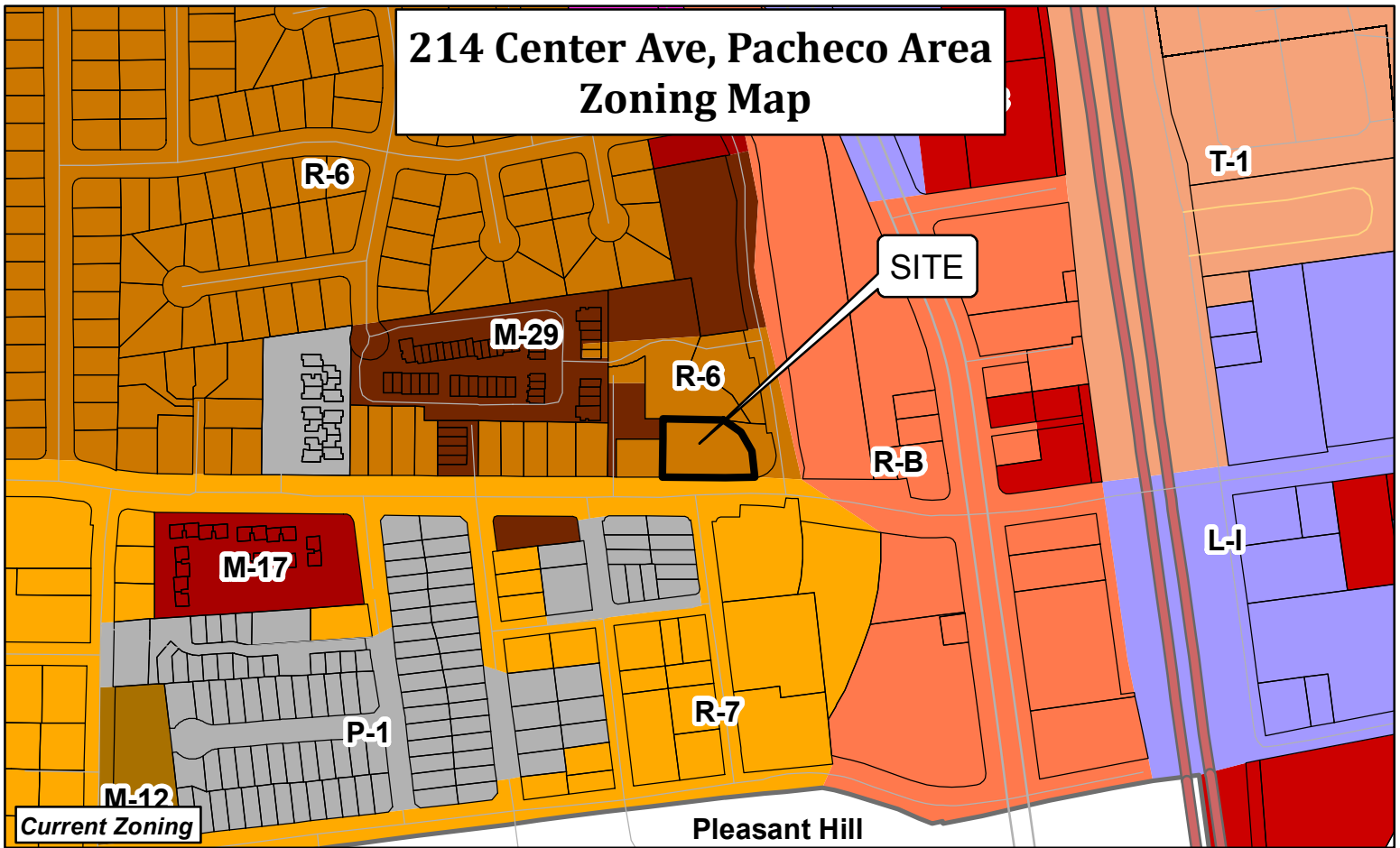


Map Created 02/14/2019  
by Contra Costa County Department of  
Conservation and Development, GIS Group  
30 Muir Road, Martinez, CA 94553  
37:59:41.791N 122:07:03.756W

This map was created by the Contra Costa County Department of Conservation and Development with data from the Contra Costa County GIS Program. Some base data, primarily City Limits, is derived from the CA State Board of Equalization's tax rate areas. While obligated to use this data the County assumes no responsibility for its accuracy. This map contains copyrighted information and may not be altered. It may be reproduced in its current state if the source is cited. Users of this map agree to read and accept the County of Contra Costa disclaimer of liability for geographic information.



# 214 Center Ave, Pacheco Area Zoning Map



Project Site

Parcels

## Zoning

R-6 (Single Family Residential)

R-7 (Single Family Residential)

M-12 (Multiple Family Residential)

M-17 (Multiple Family Residential)

M-29 (Multiple Family Residential)

O-1 (Limited Office)

R-B (Retail Business)

C (General Commercial)

L-I (Light Industrial)

P-1 (Planned Unit)

T-1 (Mobile Home/Manufactured Home Park)



0 185 370 740 Feet

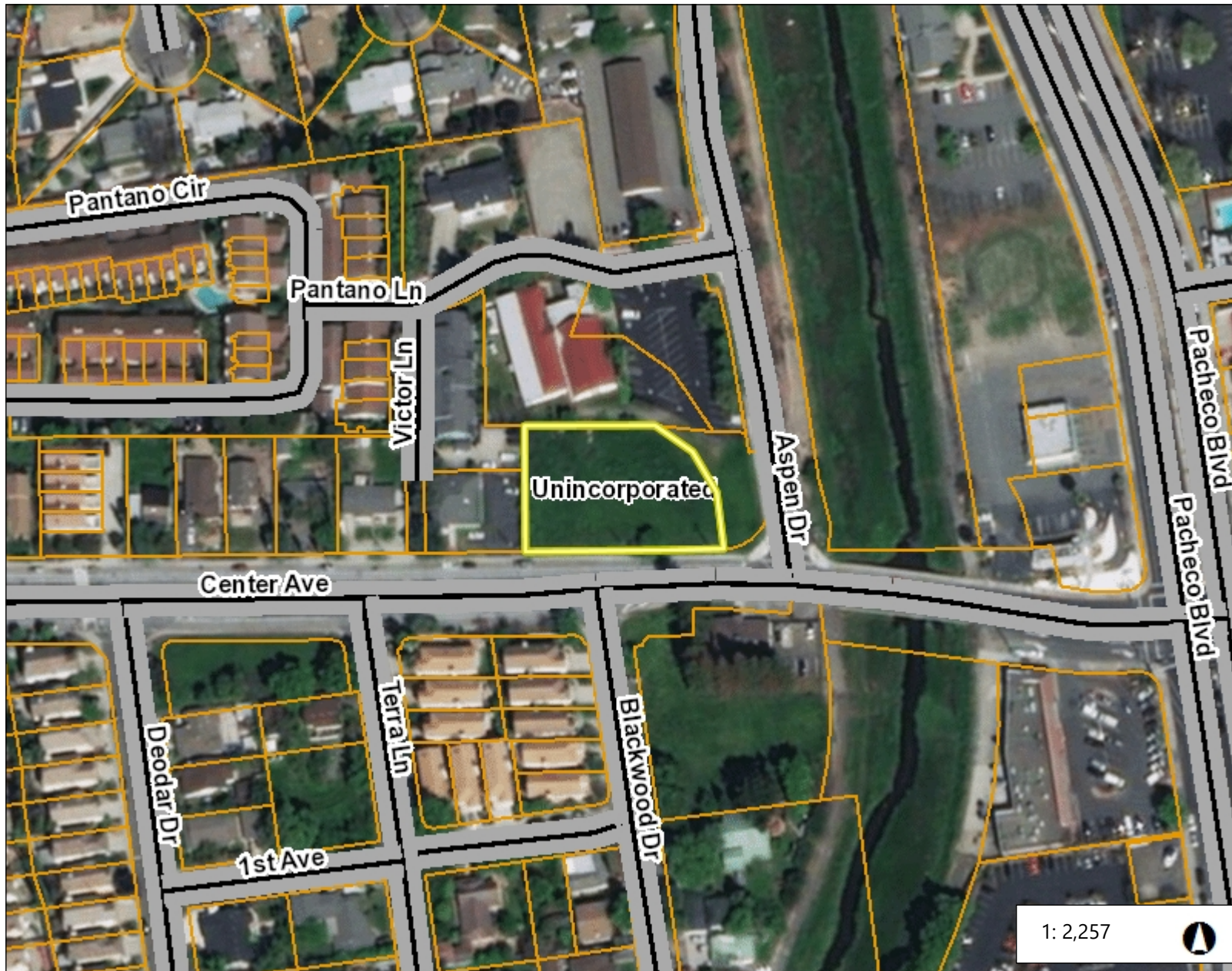
Map Created 12/04/2018  
by Contra Costa County Department of  
Conservation and Development, GIS Group  
30 Muir Road, Martinez, CA 94553  
37:59:41.791N 122:07:03.756W

This map was created by the Contra Costa County Department of Conservation and Development with data from the Contra Costa County GIS Program. Some base data, primarily City Limits, is derived from the CA State Board of Equalization's tax rate areas. While obligated to use this data the County assumes no responsibility for its accuracy. This map contains copyrighted information and may not be altered. It may be reproduced in its current state if the source is cited. Users of this map agree to read and accept the County of Contra Costa disclaimer of liability for geographic information.





# Aerial Photograph



## Legend

- City Limits
- Unincorporated
- Highways
- Highways Bay Area
- Streets
- Water Bodies
- County Boundary
- Bay Area Counties
- Assessor Parcels
- World Imagery
- Low Resolution 15m Imagery
- High Resolution 60cm Imagery
- High Resolution 30cm Imagery
- Citations

## Notes

Contra Costa County -DOIT GIS

0.1 0 0.04 0.1 Miles

WGS\_1984\_Web\_Mercator\_Auxiliary\_Sphere

This map is a user generated static output from an Internet mapping site and is for reference only. Data layers that appear on this map may or may not be accurate, current, or otherwise reliable.

THIS MAP IS NOT TO BE USED FOR NAVIGATION