


Memorandum

*Making Conservation  
a California Way of Life.*

To: ALICE ZHONG  
District Relinquishment Coordinator  
Office of Right of Way Engineering

Date: October 31, 2018

File: Relinquishment No. 56144  
CC-680, PM 13.6

From:  RAY BOYER, P.E.  
District Branch Chief  
Office of Environmental Engineering

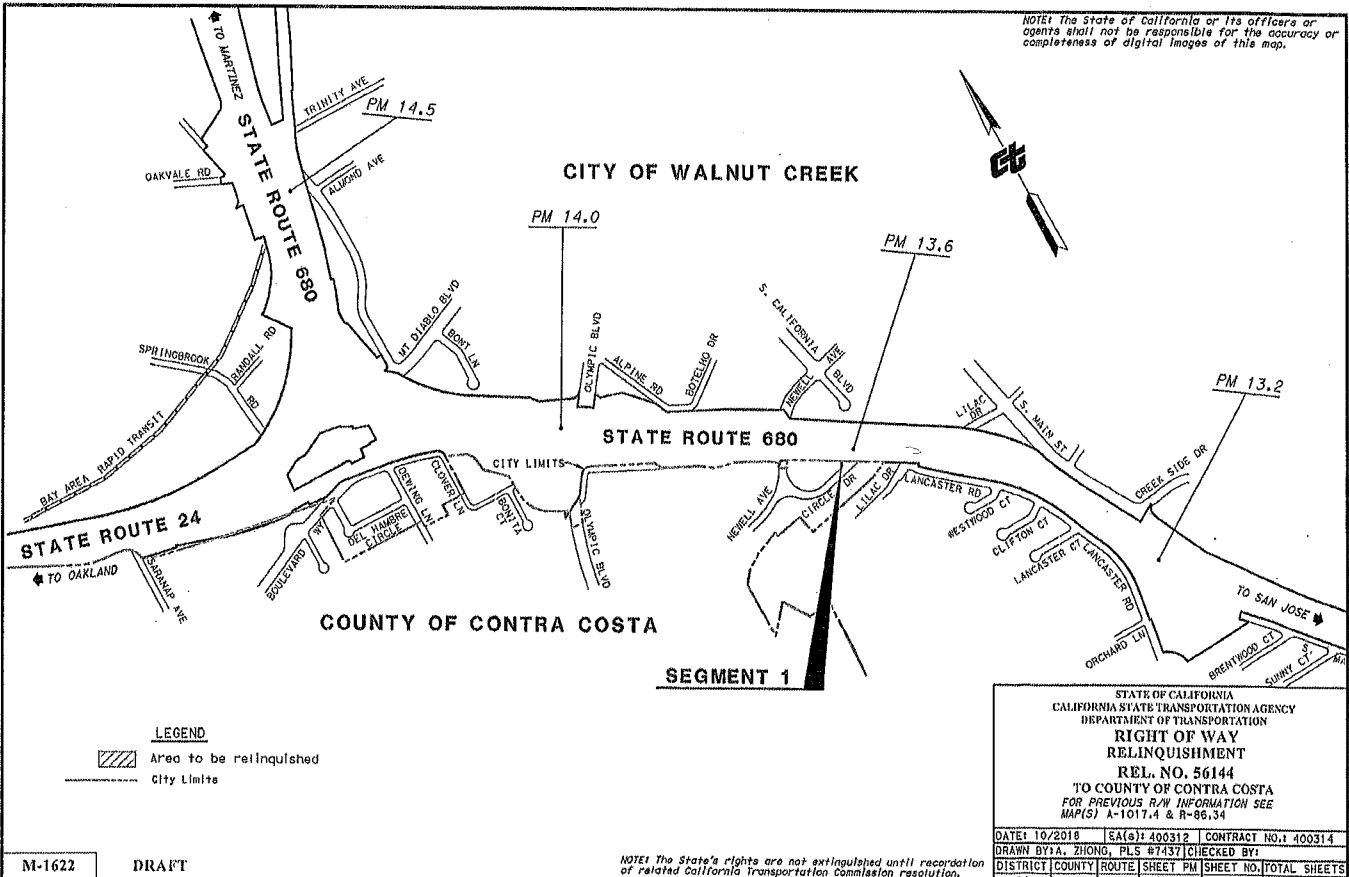
Subject: INITIAL SITE ASSESSMENT FOR RELINQUISHMENT - CC-680, PM 13.6

District 4 Office of Environmental Engineering has concluded a review of relinquishment number 56144, PM 13.6

We conducted an initial site assessment by reviewing all available site investigation reports, regulatory databases and our historical data maintained by the Office of Environmental Engineering covering the footprint of the referenced site.

Based on our initial site assessment, we found no evidence of contamination at this location. It is therefore our professional recommendation that this site be relinquished.

NOTE: The State of California or its officers or agents shall not be responsible for the accuracy or completeness of digital images of this map.



**LEGEND**  
 [Hatched Box] Area to be relinquished  
 [Dashed Line] City Limits

STATE OF CALIFORNIA  
 CALIFORNIA STATE TRANSPORTATION AGENCY  
 DEPARTMENT OF TRANSPORTATION  
**RIGHT OF WAY  
 RELINQUISHMENT**  
 REL. NO. 56144  
 TO COUNTY OF CONTRA COSTA  
 FOR PREVIOUS R/W INFORMATION SEE  
 MAP(S) A-1017.4 & R-86.34

DATE	10/2018	EA(6)	400312	CONTRACT NO.	40031.4
DRAWN BY	A. ZHONG	PLS #	47437	CHECKED BY:	
DISTRICT	04	COUNTY	CC	ROUTE	680
SHEET	13.6	SHEET NO.	1	TOTAL SHEETS	2

M-1622 DRAFT

NOTE: The State's rights are not extinguished until recordation of related California Transportation Commission resolution.

PROJECT ID: 0416000263

NOTE: The State of California or its officers or agents shall not be responsible for the accuracy or completeness of digital images of this map.

COUNTY OF CONTRA COSTA

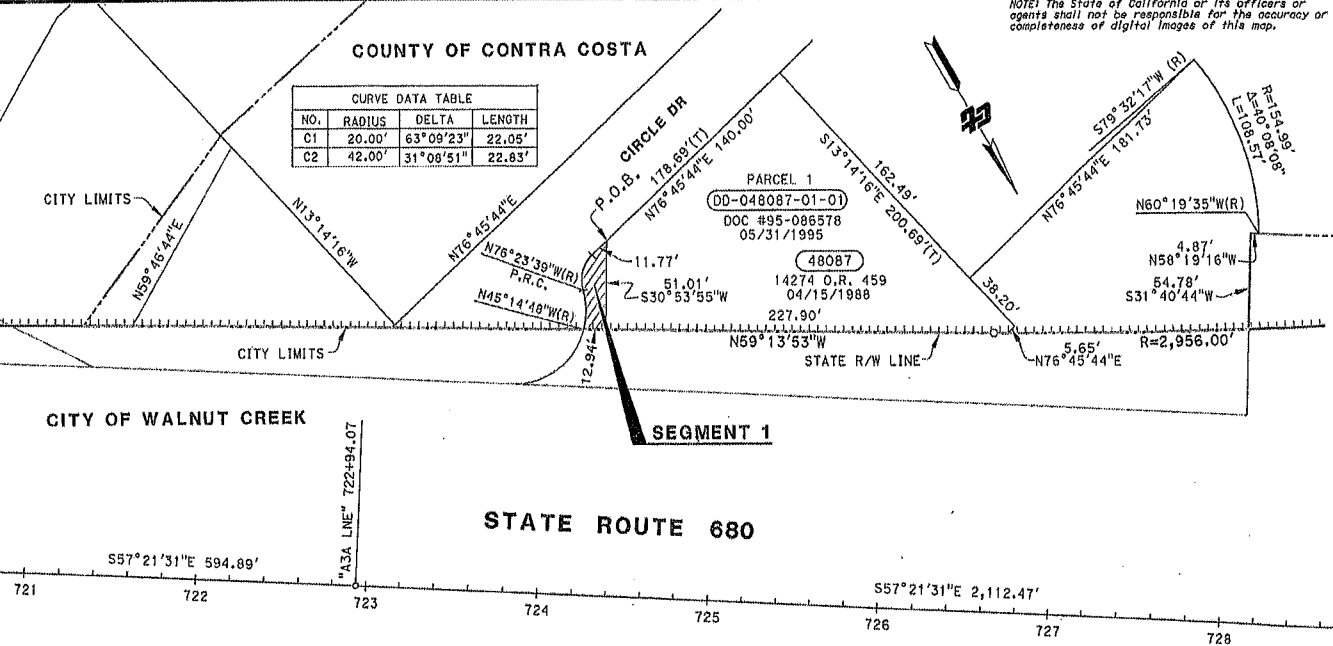
CURVE DATA TABLE			
NO.	RADIUS	DELTA	LENGTH
C1	20.00'	63°09'23"	22.05'
C2	42.00'	31°08'51"	22.83'

CITY LIMITS

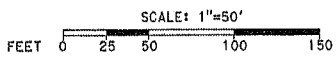
CITY OF WALNUT CREEK

SEGMENT 1

STATE ROUTE 680



- LEGEND**
- ||||||| Access Prohibited
  - City Limits
  - P.O.B. Point of Beginning
  - (R) Indicates Radial Bearing
  - o Indicates calculated point. (Does not imply monument set)
  - ▨ Area to be relinquished



STATE OF CALIFORNIA  
 CALIFORNIA STATE TRANSPORTATION AGENCY  
 DEPARTMENT OF TRANSPORTATION  
**RIGHT OF WAY  
 RELINQUISHMENT**  
 REL. NO. 56144  
 TO COUNTY OF CONTRA COSTA  
 FOR PREVIOUS R/W INFORMATION SEE  
 MAP(S) A-10117.4 & R-88.34

DATE: 10/2018	EAC(S): 400312	CONTRACT NO.: 400314
DRAWN BY: A. ZHONG, PLS #7437 CHECKED BY:		
DISTRICT: 04	COUNTY: CC	ROUTE: 680
SHEET: 13.6	PAGE: 2	TOTAL SHEETS: 2

M-1622 DRAFT

NOTE: The State's rights are not extinguished until recordation of related California Transportation Commission resolution.

PROJECT ID: 0416000263