



# SF ALAMO 012

(NEAR) 1955 MEADOW ROAD  
WALNUT CREEK, CA 94595

PSL# 433678

Revised  
CONTRACT 01517  
APR 15 PM 2:03  
WA18-0003



Verizon Wireless  
2785 Mitchell Drive, Suite 9  
Walnut Creek, CA 94598

Client:



Project Architect:

ON AIR

485 First St., Third, Suite 101  
Berkeley, CA 94704  
Phone: 707-453-6033  
Fax: 707-624-8811

Site Agent:

100% Construction Drawings

Drawing Phase:

SF ALAMO 012  
(NEAR) 1955 MEADOW ROAD  
WALNUT CREEK, CA 94595

PSL# 433678

Site Name:



Professional Seal:

It is a violation of law for any person, unless they are acting under the direction of a Licensed Professional Architect/Engineer, to alter this document.

Rev.	Date	Description
01	11/01/17	Const. Deep 90%
02	02/14/18	Const. Deep 100%
03	04/03/18	Const. Deep 100%

Project No.:

Date: 04/03/18 Job No.:

Scale: AS SHOWN CAD File:

Designed By: JG Checked: RB

TITLE SHEET

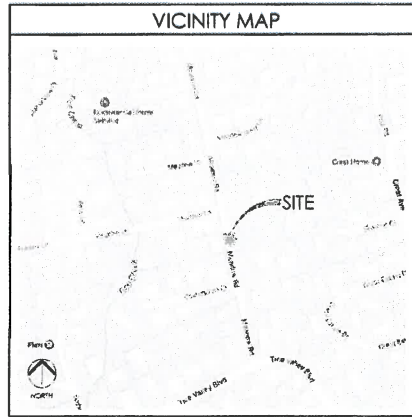
Sheet Title:

T.1

Sheet No.:

© Meridian Management LLC, 2018

SITE INFORMATION	
PSL #:	433678
OWNER:	PG&E 245 MARKET STREET SAN FRANCISCO, CA 94110 CONTACT: MARK ANDERSON TEL (925) 439-0032
APPLICANT:	VERIZON WIRELESS 2785 MITCHELL DRIVE, SUITE 9 WALNUT CREEK, CA 94598
AGENT:	ON AIR LLC 445 FIRST ST. WEST SUITE 101 SONOMA, CA 95476 TEL (707) 933-9633
APN ADJACENCY:	(IFC) 118-210-015
SITE ADDRESS:	(NEAR) 1955 MEADOW ROAD WALNUT CREEK, CA 94595
COUNTY:	CONTRA COSTA COUNTY
ZONING:	PUBLIC ROW
ZONING JURISDICTION:	CONTRA COSTA COUNTY



PROJECT TEAM	
<b>ON AIR, LLC</b>	
ON AIR LLC 445 FIRST ST. WEST SUITE 101 SONOMA, CA 95476	
PROJECT MGR: CHRIS FOWLER	
MOBILE:	(650) 888-0809
OFFICE:	(707) 933-9633
EMAIL:	cfowler@onairllc.com
CONSTRUCTION MANAGER: MOHAMMAD A. BASEER	
MOBILE:	(510) 414-7075
EMAIL:	mbaseer@onairllc.com
SITE ACQUISITION MGR: PETE HILLIARD	
MOBILE:	(707) 732-7277
OFFICE:	(707) 933-9633
EMAIL:	philliard@onairllc.com
<b>ARCHITECT/ENGINEER</b>	
PROJECT MANAGER: RODNEY BARNES	
MERIDIAN MANAGEMENT, INC. MOBILE: (707) 592-5924 EMAIL: rodney@meridianmanagement.com	
<b>VERIZON WIRELESS</b>	
VERIZON WIRELESS 2785 MITCHELL DRIVE BUILDING 9 WALNUT CREEK, CA 94598	

PROJECT DESCRIPTION	
THIS IS AN UNMANNED TELECOMMUNICATIONS FACILITY FOR THE VERIZON WIRELESS NETWORK CONSISTING OF THE INSTALLATION AND OPERATION OF AN ANTENNA AND ASSOCIATED EQUIPMENT ON AN EXISTING WOOD POLE IN THE PUBLIC RIGHT-OF-WAY.	
<b>SCOPE OF WORK</b>	
1. INSTALL NEW TELECOMMUNICATIONS EQUIPMENT BOXES ON AN EXISTING 48.7' HT. POLE WOOD POLE.	
2. POLE MOUNTED EQUIPMENT TO BE INSTALLED ON A GUY'S COMPLIANT STANDOFF BRACKET.	
3. EQUIPMENT CONSISTS OF (1) 4' HT. ANTENNA ON POLE TOP EXTENSION (2) BRUSSE AND (2) DIPLEXER INSET (2) RFI SHROUDED, (1) DISCONNECT SWITCH, (2) POWER SUPPLY UNIT, (1) FIBER DEMARC BOX, AND (1) POLE MOUNTED POWER METER.	
4. INSTALL POLE STEPS AS REQUIRED	
5. ALL POLE EQUIPMENT TO BE PAINTED VALSPAR 'DEEP EARTH' COLOR	
6. POWER SERVICE FROM OVERHEAD TRANSFORMER POC	

DRAWING INDEX	
SHEET NO:	SHEET TITLE
T.1	TITLE SHEET
C.1	SITE SURVEY
C.2	SITE SURVEY
A.1	OVERALL SITE PLAN
A.2	POLE PLAN ENLARGEMENTS
A.3	ELEVATIONS
A.4	ELEVATIONS
A.5	EQUIPMENT DETAILS
A.6	EQUIPMENT DETAILS
A.7	EQUIPMENT DETAILS
E.1	SINGLE LINE DIAGRAM, BUSS DIAGRAM, PANEL SCHEDULE
E.2	POLE GROUNDING, ELECTRICAL DETAILS
TC.1	SITE SPECIFIC VEHICLE TRAFFIC CONTROL PLAN

CODE COMPLIANCE	
CONSTRUCTION WORKS AND MATERIALS MUST COMPLY WITH ALL APPLICABLE NATIONAL, STATE AND LOCAL CODES AS ADOPTED BY LOCAL JURISDICTION, INCLUDING BUT NOT LIMITED TO:	
<ul style="list-style-type: none"> <li>CALIFORNIA CODE OF REGULATIONS</li> <li>2016 CALIFORNIA BUILDING CODE</li> <li>2016 CALIFORNIA MECHANICAL CODE</li> <li>2016 CALIFORNIA PLUMBING CODE</li> <li>2016 CALIFORNIA ELECTRIC CODE</li> <li>2016 GREEN CODE</li> <li>2016 EDITION OF TITLE 24 ENERGY STANDARDS</li> <li>ANY LOCAL BUILDING CODE AMENDMENTS TO THE ABOVE</li> <li>CITY / COUNTY ORDINANCES</li> <li>2016 CALIFORNIA FIRE CODES WITH ALL LOCAL AMENDMENTS</li> <li>GO 95 REGULATIONS</li> </ul>	

DRIVING DIRECTIONS	
<b>DIRECTIONS FROM VERIZON WIRELESS RF MARKET OFFICE:</b>	
<ol style="list-style-type: none"> <li>FOLLOW OAK GROVE RD TO YGNACIO VALLEY RD</li> <li>HEAD NORTHEAST ON MITCHELL DR TOWARD OAK GROVE RD</li> <li>TURN RIGHT ONTO OAK GROVE RD</li> <li>CONTINUE ON YGNACIO VALLEY RD. TAKE I-680 S TO S MAIN ST. TAKE EXIT 45A FROM I-680 S</li> <li>TURN RIGHT ONTO YGNACIO VALLEY RD</li> <li>YGNACIO VALLEY RD TURNS RIGHT AND BECOMES HILLSIDE AVE</li> <li>USE THE LEFT 2 LANES TO TURN LEFT ONTO THE INTERSTATE 680 S RAMP TO SAN JOSE</li> <li>MERGE ONTO I-680 S</li> <li>TAKE EXIT 45A FOR S MAIN ST</li> <li>TAKE CASTLE HILL RD TO MEADOW RD IN ALAMO</li> <li>TURN RIGHT ONTO S MAIN ST</li> <li>TURN RIGHT ONTO CASTLE HILL RD</li> <li>TURN LEFT ONTO MEADOW RD</li> <li>DESTINATION WILL BE ON THE RIGHT</li> </ol>	

HANDICAP REQUIREMENTS	
FACILITY IS UNMANNED AND NOT FOR HUMAN HABITATION. HANDICAPPED ACCESS NOT REQUIRED IN ACCORDANCE WITH CALIFORNIA ADMINISTRATIVE STATE CODE PART 2, TITLE 24, CHAPTER 118, SECTION 11038.	



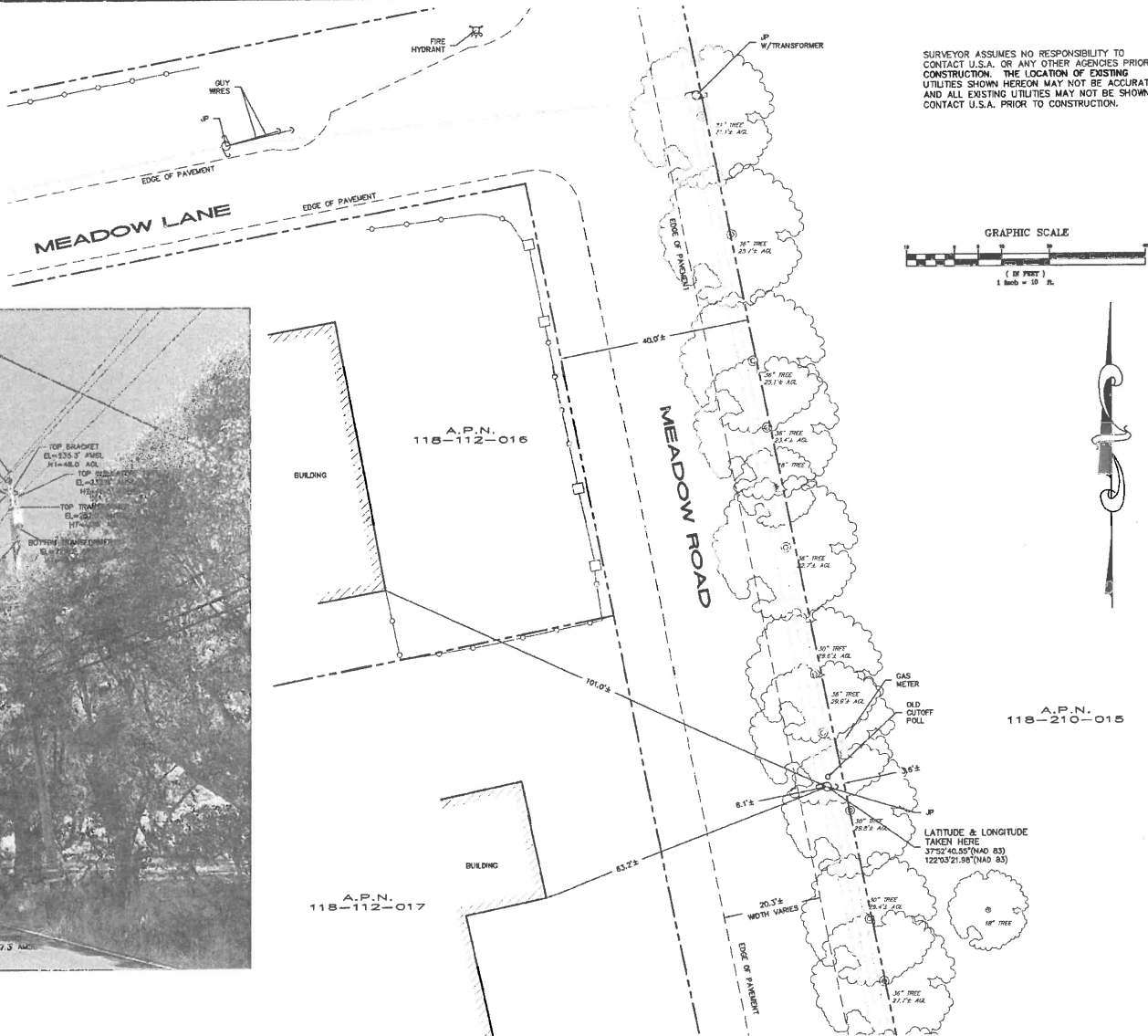
ADMINISTRATIVE REQUIREMENTS	
CONTRACTOR SHALL VERIFY ALL PLANS & (E) DIMENSIONS & CONDITIONS ON THE JOB SITE & SHALL IMMEDIATELY NOTIFY THE ENGINEER IN WRITING OF ANY DISCREPANCIES BEFORE PROCEEDING WITH THE WORK OR BE RESPONSIBLE FOR SAME IF USING 11"x17" PLOT, DRAWINGS WILL BE HALF SCALE	

SITE MAP

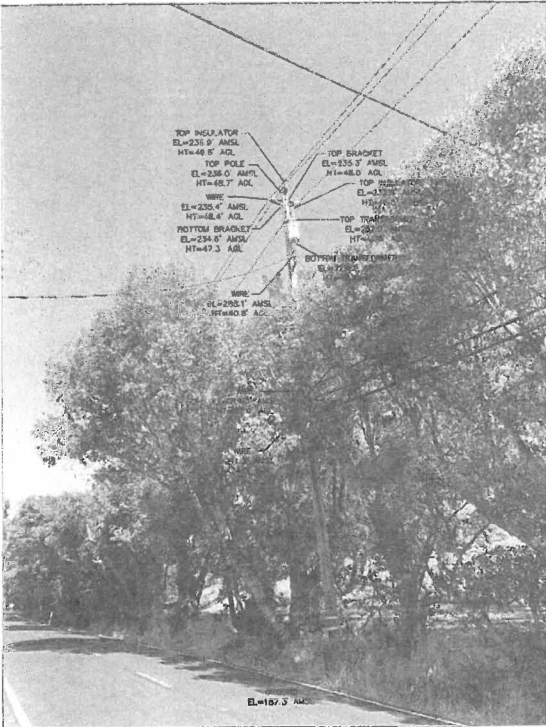
A BOUNDARY SURVEY WAS NOT PERFORMED AT THIS TIME. RIGHT-OF-WAY WIDTHS AND PROPERTY LINE LOCATIONS SHOWN HEREON ARE APPROXIMATE AND BASED ON A COMBINATION OF VARIOUS MAPS AND FIELD OBSERVATIONS FOR GRAPHICAL PURPOSES ONLY.

LEGEND

- PROPERTY LINE
- FENCE
- - - - EDGE OF PAVEMENT
- - - - EDGE OF GRAVEL
- - - - OVERHEAD UTILITY LINE
- AGL ABOVE GROUND LEVEL
- AMSL ABOVE MEAN SEA LEVEL



SURVEYOR ASSUMES NO RESPONSIBILITY TO CONTACT U.S.A. OR ANY OTHER AGENCIES PRIOR TO CONSTRUCTION. THE LOCATION OF EXISTING UTILITIES SHOWN HEREON MAY NOT BE ACCURATE AND ALL EXISTING UTILITIES MAY NOT BE SHOWN. CONTACT U.S.A. PRIOR TO CONSTRUCTION.



**SJ SURVEYS**  
9883 ASBLOMAR LANE  
ELK GROVE, CA 95757

REVISIONS	
NO.	DATE / DESCRIPTION
1	10/17/17 ISSUED FOR REVIEW

**verizon**

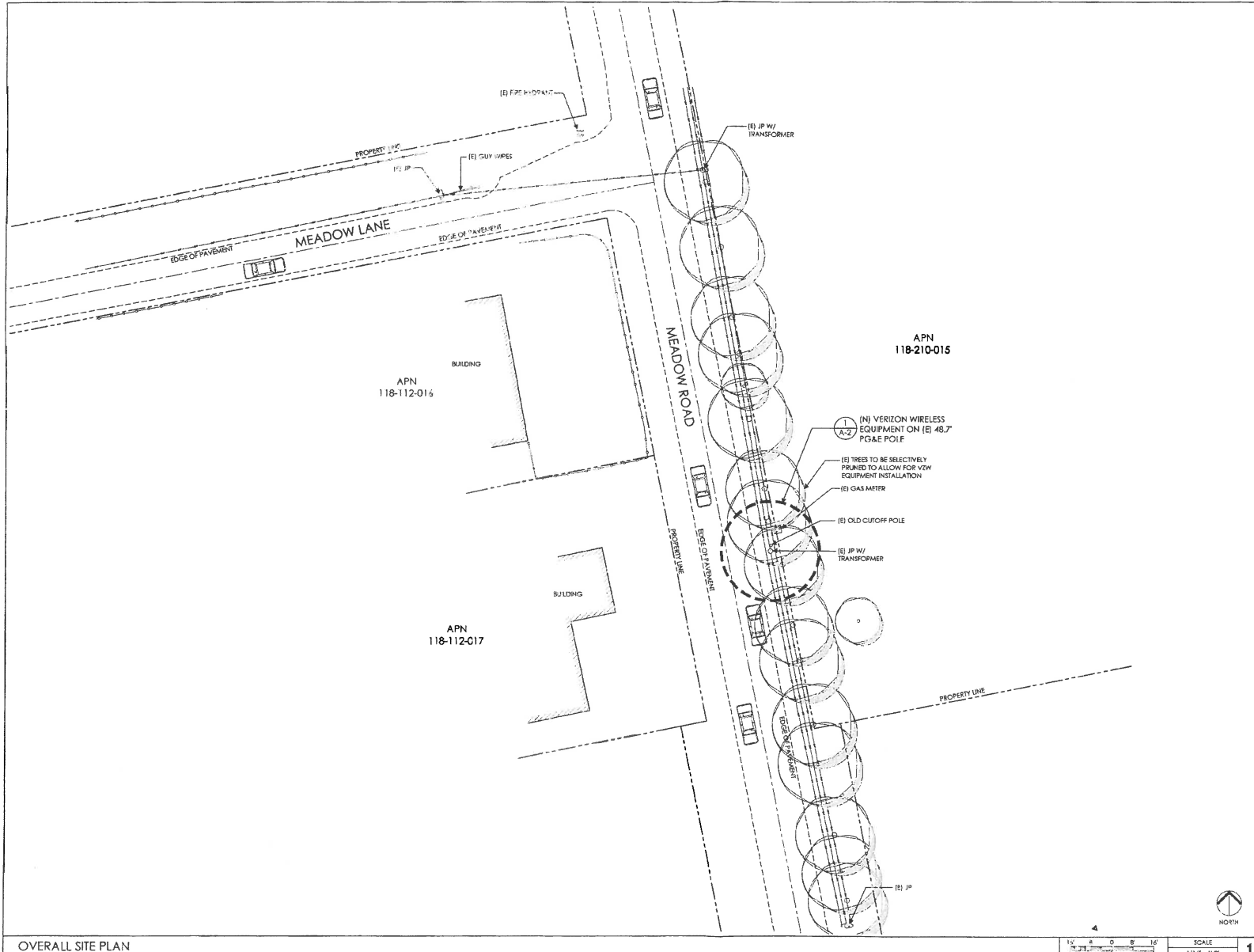
VERIZON WIRELESS  
2785 MITCHELL DRIVE, BLDG 9  
WALNUT CREEK, CA, 94598

433678  
SF ALAMO 012  
NEAR 1955 MEADOW ROAD  
WALNUT CREEK, CA 94595

DRAWN: [ ] DATE: 10/18/17  
JOB NO. [ ] SHEET NO. 17016

C-1

BOUNDARY SHOWN IS BASED ON RECORD INFORMATION AND FOUND MONUMENTATION. THIS IS NOT A BOUNDARY SURVEY. PROPERTY LINES SHOWN ARE APPROXIMATE.



Verizon Wireless  
2785 Mitchell Drive, Suite 9  
Walnut Creek, CA 94598

Client:

**MM** Meridian Management LLC  
788 Oak Grove Road E2  
Suite 201  
Oakland, CA 94618  
T: 925.283.9959  
www.meridianmanagement.com

Project Architect:



488 Five St. West, Suite 101  
Berkeley, CA 94710  
Phone: 925.842.8400  
Fax: 925.842.8411

Site Agent:

100% Construction Drawings

Drawing Phase:

**SF ALAMO 012**  
(NEAR) 1955 MEADOW ROAD  
WALNUT CREEK, CA 94595  
PSL# 433678

Site Name:



Professional Seal:

It is a violation of law for any person, unless they are acting under the direction of a licensed Professional Architect/Engineer, to alter this document.

Rev.	Date	Description
D1	11/01/17	Comm. Drawg 90%
D2	03/14/18	Comm. Drawg 100%
D3	04/03/18	Comm. Drawg 100%

Project No.:

Date: 04/03/18 Job No.:

Scale: AS SHOWN CAD File:

Designed By: JG Checked: RB

**OVERALL SITE PLAN**

Sheet Title:

**A.1**

Sheet No.:

© Meridian Management LLC, 2018

OVERALL SITE PLAN

SCALE 1/16" = 1'-0"

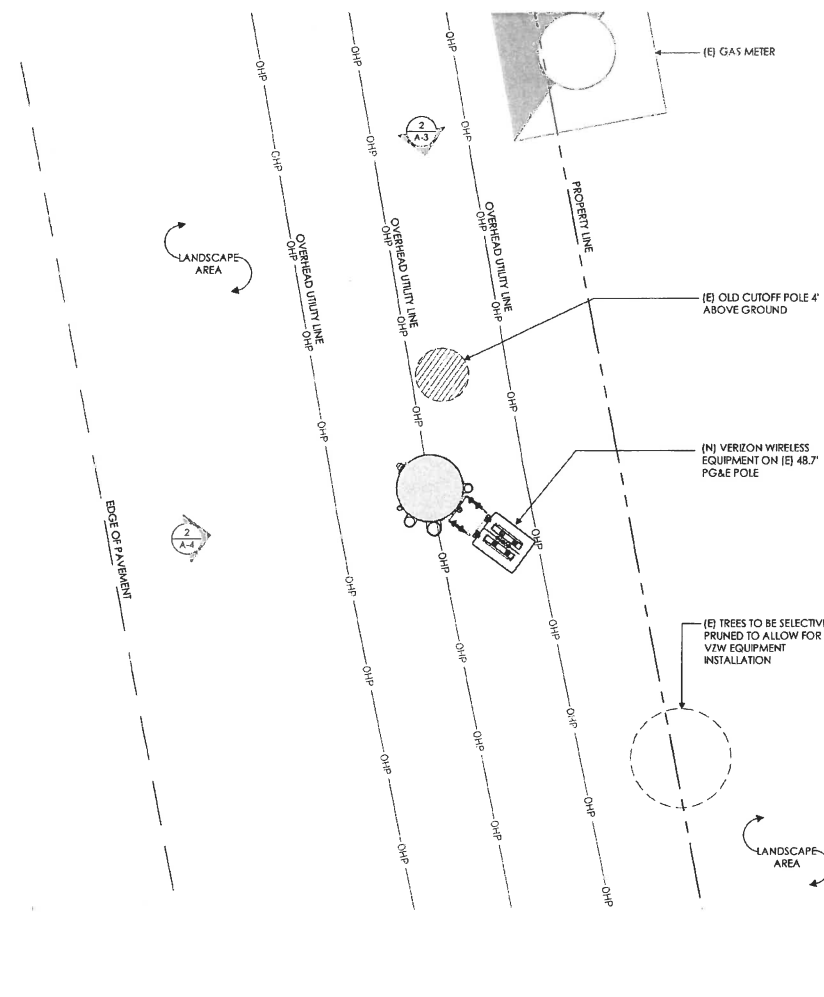
(N) VERIZON EQUIPMENT TO BE MOUNTED IN THE 1:30 ORIENTATION RELATIVE TO THE STREET. CLIMBING SPACE IS BETWEEN 3:00 AND 6:00.  
POLE STEPS REQUIRED FROM 8.5' TO COMMUNICATIONS ZONE. STEPS SHOULD BE USABLE WHEN INSTALLED WITHIN CLIMBING SPACE

**EQUIPMENT SYSTEM:**

ALL NEW COMPONENTS NOT SHOP PAINTED SHOULD BE FIELD PAINTED VALSPAR 'DEEP EARTH' COLOR

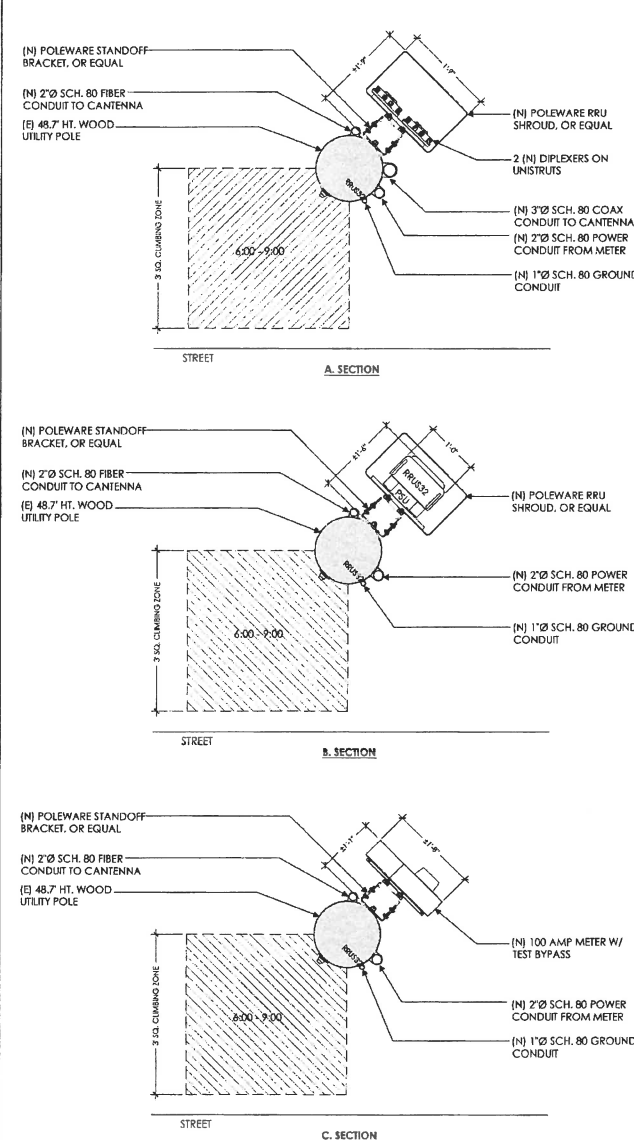
**NEW CONDUIT FOR POWER/TELCO:**

- (1) 2" CONDUIT FOR POWER
- (1) 2" CONDUIT FOR FIBER
- (1) 3" CONDUIT FOR COAX
- (1) 1" CONDUIT FOR GROUND



POLE PLAN ENLARGEMENT

1"	6"	0'	6"	1"
SCALE				
1" = 1'-0"				



POLE SECTIONS

1"	6"	0'	6"	1"
SCALE				
1" = 1'-0"				



Verizon Wireless  
2785 Mitchell Drive, Suite 9  
Walnut Creek, CA 94598

Client:



Meldion Management LLC  
758 Oak Grove Road E2  
Suite 201  
Concord, CA 94519  
1 925.893.8924  
www.meldionmanagement.com

Project Architect:



488 First St., Suite 101  
Berkeley, CA 94701  
Phone: 415.863.6213  
Fax: 415.863.6411

Site Agent:

**100% Construction Drawings**

Drawing Phase:

**SF ALAMO 012**  
[NEAR] 1955 MEADOW ROAD  
WALNUT CREEK, CA 94595

PSL# 433678

Site Name:



Professional Seal:  
It is a violation of law for any person, unless they are acting under the direction of a licensed Professional Architect, to sign this document.

Rev.	Date	Description
01	11/01/17	Const. Drawg 90%
02	03/14/18	Const. Drawg 100%
03	04/03/18	Const. Drawg 100%

Project No.:

Date: 04/03/18 Job No.:

Scale: AS SHOWN CAD File:

Designed By: JG Checked: RB

**POLE PLAN ENLARGEMENTS**

Sheet T. c:

**A.2**

Sheet No.:

© Meldion Management LLC, 2018

- TOP OF (E) INSULATOR/POWER WIRE  
ELEV. 49.8' AGL
- TOP OF (E) WOOD POLE  
ELEV. 48.7' AGL
- (E) POWER WIRE  
ELEV. 48.8' AGL

- TOP OF (E) TRANSFORMER  
ELEV. 44.8' AGL

- TOP OF (E) STANDOFF BRACKET  
ELEV. 42.4' AGL

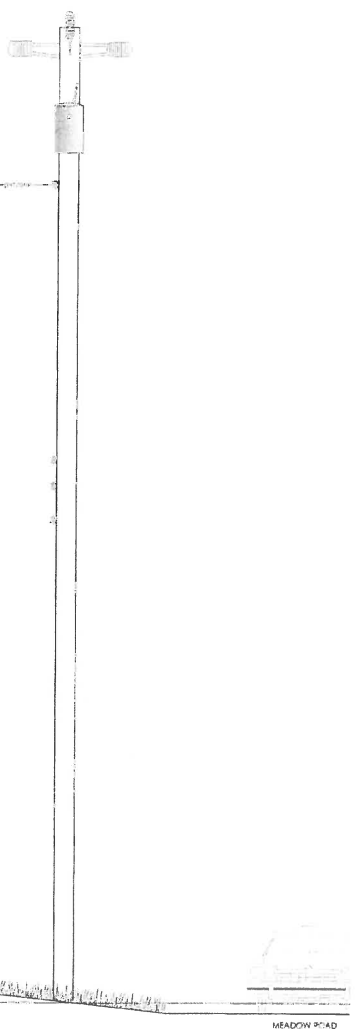
- (E) POWER WIRE  
ELEV. 40.8' AGL

- (E) COMM WIRE  
ELEV. 27.0' AGL

- (E) COMM WIRE  
ELEV. 25.7' AGL

- (E) COMM WIRE  
ELEV. 24.0' AGL

- GROUND  
ELEV. 0.0' AGL



NORTH ELEVATION - EXISTING



1

- TOP OF (N) CANTENNA  
ELEV. 59.4' AGL
- RAD CENTER OF (N) CANTENNA  
ELEV. 57.4' AGL
- TOP OF (N) CANTENNA  
ELEV. 55.4' AGL

- (N) 6 WOOD POLE EXTENSION

- TOP OF (E) WOOD POLE  
ELEV. 48.7' AGL

- (N) RELOCATED CONDUCTOR ON NEW CROSS ARM TO REPLACE EXISTING

- RELOCATED POWER WIRE  
ELEV. 46.4' AGL

- TOP OF RELOCATED TRANSFORMER  
ELEV. 42.4' AGL

- BOTTOM OF RELOCATED TRANSFORMER  
ELEV. 40.0' AGL

- (E) POWER WIRE  
ELEV. 38.4' AGL

- (E) COMM WIRE  
ELEV. 27.0' AGL

- (E) COMM WIRE  
ELEV. 25.7' AGL

- (E) COMM WIRE  
ELEV. 24.0' AGL

- (N) 3" DIA. SCH. 80 COAX RISER TO CANTENNA

- TOP OF (N) DIPLEXER SHROUD/STANDOFF BRACKET  
ELEV. 18.0' AGL

- TOP OF (N) RRUSS2  
ELEV. 16.0' AGL

- BOTTOM OF (N) RRUSS2  
ELEV. 14'-10" AGL

- TOP OF (N) RRUSS2  
ELEV. 13'-6" AGL

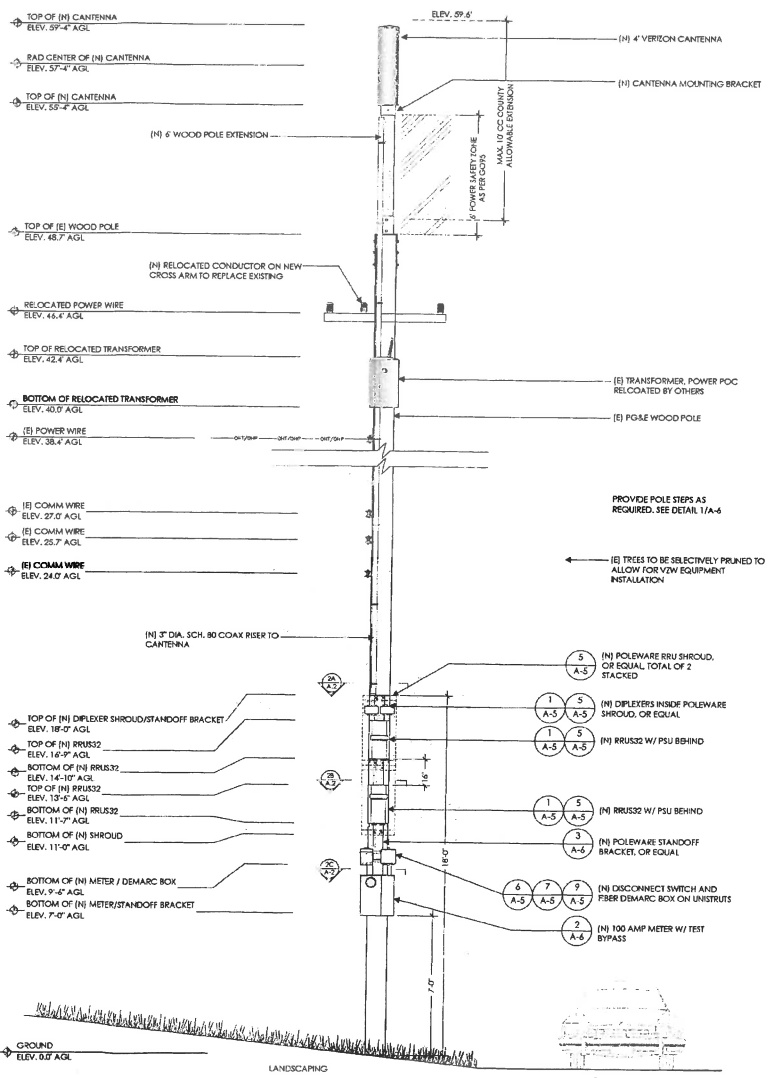
- BOTTOM OF (N) RRUSS2  
ELEV. 11'-7" AGL

- BOTTOM OF (N) SHROUD  
ELEV. 11'-0" AGL

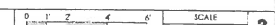
- BOTTOM OF (N) METER / DEMARC BOX  
ELEV. 9'-4" AGL

- BOTTOM OF (N) METER/STANDOFF BRACKET  
ELEV. 7'-0" AGL

- GROUND  
ELEV. 0.0' AGL



NORTH ELEVATION - PROPOSED



2



Verizon Wireless  
2785 Mitchell Drive, Suite 9  
Walnut Creek, CA 94594

Client:

Mission Management LLC  
785 Oak Grove Road E2  
Suite 201  
Concord, CA 94518  
T 707.952.9924  
www.missionmanagement.com

Project Architect:

ON AIR

458 First St., Suite 101  
Bakersfield, CA 93301  
Phone 707.653.8533  
Fax 707.453.9511

Site Agent:

100% Construction Drawings

Drawing Phase:

SF ALAMO 012  
(NEAR) 1955 MEADOW ROAD  
WALNUT CREEK, CA 94595

PSL# 433678

Site Name:



Professional Seal:

It is a violation of law for any person, unless they are acting under the direction of a licensed Professional Architect/Engineer, to alter this document.

Rev.	Date	Description
01	11/01/17	Comm. Drawg 90%
02	01/14/18	Comm. Drawg 100%
03	04/03/18	Comm. Drawg 100%

Project No.:  
Date: 04/03/18 Job No.:  
Scale: AS SHOWN CAD File:  
Designed By: JG Checked: RB

ELEVATIONS

Sheet Title:

A.3

Sheet No.:

© Mission Management LLC, 2018

IF DIMENSIONS SHOWN ON PLAN DO NOT SCALE CORRECTLY, CHECK FOR REDUCTION OR ENLARGEMENT FROM ORIGINAL PLANS.

- TOP OF (E) INSULATOR/POWER WIRE  
ELEV. 59'-4" AGL
- TOP OF (E) WOOD POLE  
ELEV. 48'-7" AGL
- (E) POWER WIRE  
ELEV. 48.8' AGL
- TOP OF (E) TRANSFORMER  
ELEV. 44.8' AGL
- TOP OF (N) STANDOFF BRACKET  
ELEV. 42.4' AGL
- (E) POWER WIRE  
ELEV. 40.8' AGL

(E) PG&E WOOD POLE  
(E) TRANSFORMER, POWER POC  
(E) TREES

- (E) COMM WIRE  
ELEV. 37.8' AGL
- (E) COMM WIRE  
ELEV. 25.7' AGL
- (E) COMM WIRE  
ELEV. 24.6' AGL



LANDSCAPING

NORTH ELEVATION - EXISTING

- TOP OF (N) CANTENNA  
ELEV. 59'-4" AGL
- RAD CENTER OF (N) CANTENNA  
ELEV. 57'-4" AGL
- TOP OF (N) CANTENNA  
ELEV. 55'-4" AGL

(N) 6" WOOD POLE EXTENSION  
(N) RELOCATED CONDUCTOR ON NEW CROSS ARM TO REPLACE EXISTING  
MAX. 0.00 COUNTY ALLOWABLE DEFLECTION  
POWER WIRE AT 18" SPACINGS

- TOP OF (E) WOOD POLE  
ELEV. 48.7' AGL
- RELOCATED POWER WIRE  
ELEV. 42.4' AGL
- TOP OF RELOCATED TRANSFORMER  
ELEV. 42.4' AGL
- BOTTOM OF RELOCATED TRANSFORMER  
ELEV. 40.0' AGL
- (E) POWER WIRE  
ELEV. 38.4' AGL

(E) TRANSFORMER, POWER POC RELOCATED BY OTHERS  
(E) PG&E WOOD POLE

- (E) COMM WIRE  
ELEV. 37.8' AGL
- (E) COMM WIRE  
ELEV. 25.7' AGL
- (E) COMM WIRE  
ELEV. 24.6' AGL

- TOP OF (N) DIPLER SHROUD/STANDOFF BRACKET  
ELEV. 18'-0" AGL
- TOP OF (N) RRU32  
ELEV. 16'-9" AGL
- BOTTOM OF (N) RRU32  
ELEV. 14'-10" AGL
- TOP OF (N) RRU32  
ELEV. 13'-9" AGL
- BOTTOM OF (N) RRU32  
ELEV. 11'-7" AGL
- BOTTOM OF (N) SHROUD  
ELEV. 11'-0" AGL
- BOTTOM OF (N) METER / DEMARC BOX  
ELEV. 9'-4" AGL
- BOTTOM OF (N) METER/STANDOFF BRACKET  
ELEV. 7'-0" AGL

(N) POLEWARE RRU SHROUD, OR EQUAL, TOTAL OF 2 STACKED  
(N) DIPLERERS INSIDE POLEWARE SHROUD, OR EQUAL  
(N) RRU32 W/ PSU BEHIND  
(N) POLEWARE STANDOFF BRACKET, OR EQUAL  
(N) RRU32 W/ PSU BEHIND  
(N) DISCONNECT SWITCH AND FIBER DEMARC BOX ON UNISTRUTS  
(N) 100 AMP METER W/ TEST BYPASS



LANDSCAPING

NORTH ELEVATION - PROPOSED



Verizon Wireless  
2785 Mitchell Drive, Suite 9  
Walnut Creek, CA 94590

Client:

Moridian Management LLC  
786 Oak Grove Road E2  
Suite 201  
Concord, CA 94518  
1 925.202.8924  
www.moridianmanagement.com

Project Architect:

ON AIR

485 First St, West, Suite 101  
Berkeley, CA 94708  
Phone: 925.842.8333  
Fax: 925.852-9111

Site Agent:

100% Construction Drawings

Drawing Phase:

SF ALAMO 012  
(NEAR) 1955 MEADOW ROAD  
WALNUT CREEK, CA 94595

PSL# 433678

Site Name:



Professional Seal:  
It is a violation of law for any person, unless they are acting under the direction of a Licensed Professional Architect/Engineer, to alter this document.

Rev.	Date	Description
01	11/03/07	Constr. Drawg 50%
02	09/14/18	Constr. Drawg 100%
03	04/03/18	Constr. Drawg 100%

Project No.:  
Date: 04/03/18 Job No.:  
Scale: AS SHOWN CAD File:  
Designed By: JG Checked: RB

ELEVATIONS

Sheet Title:

A.4

Sheet No.:

© Moridian Management LLC, 2018

SCALE: 3/8" = 1'-0"

1

SCALE: 3/8" = 1'-0"

2

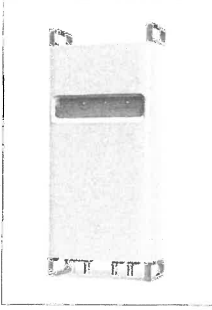
UNIT: ERICSSON RRU32 92

HEIGHT: 27.2 INCHES

WIDTH: 12.1 INCHES

LENGTH: 7.0 INCHES

WEIGHT: 33 LBS (EXCLUDES MOUNTING HARDWARE)


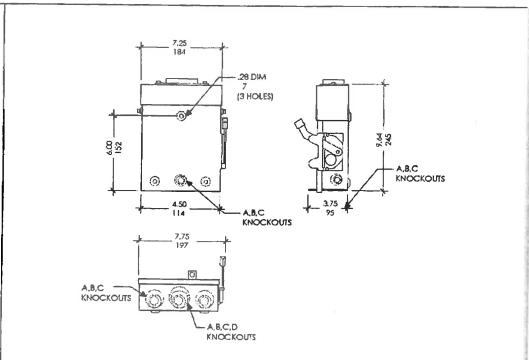


UNIT: 100 AMP METEY W/ TEST BYPASS

HEIGHT: 24 INCHES

WIDTH: 25 INCHES

DEPTH: 4.5/8 INCHES

RRUS32 1 METER

4 DISCONNECT SWITCH

7

HEIGHT: 2.72 INCHES

WIDTH: 10.79 INCHES

DEPTH: 7.0 INCHES

WEIGHT: 11.46 LBS

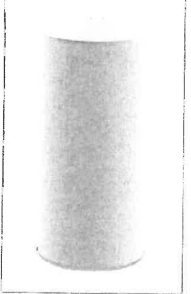
(USEFUL FOR RRUS32)



HEIGHT: 48.0 INCHES

DIAMETER: 14.6 INCHES

WEIGHT: 38.1 LBS (WITHOUT MOUNTING BRACKET)



8

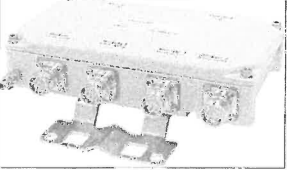
NOT USED 2 POWER SUPPLY UNIT (PSU AC 08)

UNIT: FIBER DEMARC ENCLOSURE BOX

HEIGHT: 8.54 INCHES

WIDTH: 10 INCHES

DEPTH: 2.88 INCHES



5 CANTENNA

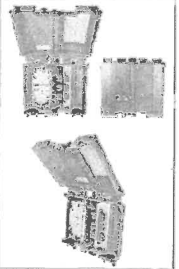
UNIT: COMMSCOPE CBC1923T-4310

HEIGHT: 8.31 INCHES

WIDTH: 2.48 INCHES

DEPTH: 7.0 INCHES

WEIGHT: 4.4 LBS



NOTE: NEW PHENOLIC SIGN ATTACHED TO INSIDE PANEL.

CONTRACTOR NOTE: SITE ID WILL BE SITE ID, MARKET ID, SITE #, AND SITE NAME

3 DISCONNECT SIGNAGE

NORMAL SHUT-DOWN PROTOCOLS:

1. Call 800-264-6620 NOC 24 HRS prior to schedule a shutdown day and time.
2. Give NOC the Node number.
3. On scheduled day of shutdown, pull the Disconnect handle to the "ON" position.
4. Call NOC when work is completed.

EMERGENCY SHUT-DOWN PROTOCOLS:

1. Call 800-264-6620 NOC immediately.
2. Give NOC the Node Number.
3. Pull the disconnect handle to the "OFF" position.
4. Call NOC when work is completed.

UTILITY COMPANY POWER DISCONNECT SWITCH

OUTSIDE PANEL DOOR SHOWING DISCONNECT SWITCH ON TABLE

DEC. OR PANEL DOOR W/ LATCH/LOOP (LOCKABLE)

9 RF WARNING SIGNAGE

10

CAUTION

ON WOOD POLES - SIGN ON ALUMINUM WITH SS SCREW TO THE POLE 8" BELOW ANTENNA

CONTRACTOR NOTE: SITE ID WILL BE SITE ID, MARKET ID, SITE #, AND SITE NAME

**verizon**

Verizon Wireless  
2785 Mitchell Drive, Suite 9  
Walnut Creek, CA 94598

Client:

Maidman Management LLC  
786 Oak Grove Road #2  
Suite 201  
Concord, CA 94518  
1702.852394  
www.verizon.com/verizon

Project Architect:

**ON AIR**

489 West 51 Street, Suite 111  
Sonoma, CA 94978  
Phone: 707.863.8533  
Fax: 707.863.8811

Site Agent:

100% Construction Drawings

Drawing Phase:

SF ALAMO 012  
(NEAR) 1955 MEADOW ROAD  
WALNUT CREEK, CA 94595

PSL# 433678

Site Name:

Professional Seal:

It is a violation of law for any person, unless they are acting under the direction of a licensed Professional Architect/Engineer, to alter this document.

Rev.	Date	Description
01	11/11/17	Coord. Drawg 50%
02	01/11/18	Coord. Drawg 100%
03	04/03/18	Coord. Drawg 100%

Project No.:

Date: 04/03/18 Job No.:

Scale: AS SHOWN CAD Files:

Designed By: JG Checked: RB

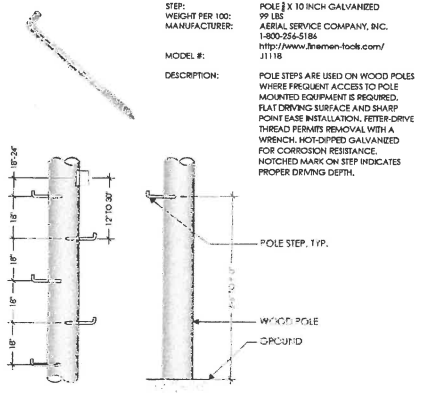
EQUIPMENT DETAILS

Sheet Title:

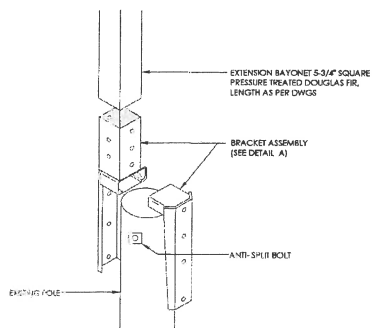
**A.5**

Sheet No.:

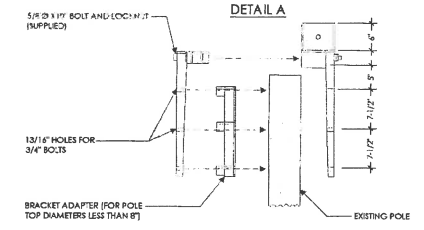
©Maidman Management LLC, 2018



POLE STEPS SCALE NOT TO SCALE 1



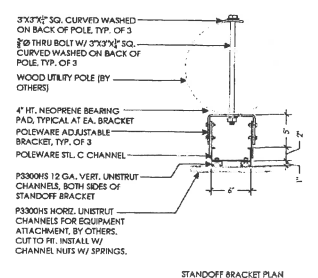
DETAIL A



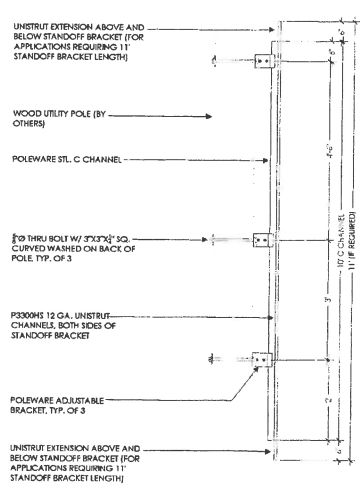
DETAIL B

NOTE: (B) BRACKET ASSEMBLY TO BE PROVIDED BY UTILITY COMPANY AND PAINT TO MATCH

WOOD POLE EXTENSION SCALE NOT TO SCALE 2



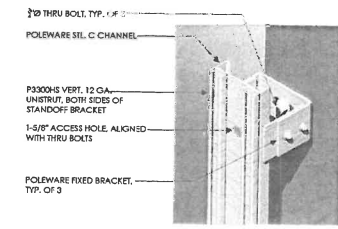
STANDOFF BRACKET PLAN



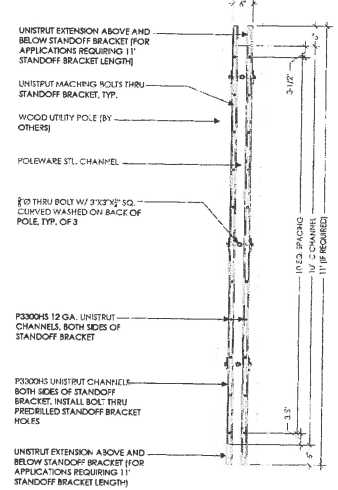
STANDOFF BRACKET SIDE ELEVATION

- NOTE:
1. STANDOFF BRACKET MODEL #P-3028-10-AD-3-SP AS MFG. BY POLEWARE, LLC. (475) 216-5119, OR EQUAL.
  2. ALL COMPONENTS TO BE SHOP PRIME PAINTED
  3. UNISTRUT COMPONENTS TO BE MFG BY UNISTRUT CORPORATION, 1140 W. THORNDALE AVE., PASCA, IL 60142, (800) 469-9510.
  4. HORIZONTAL UNISTRUTS (P3000HS) FOR EQUIPMENT INSTALLATION NOT INCLUDED
  5. ADJUSTABLE BRACKETS FOR SLANTED POLES AVAILABLE BY SPECIAL ORDER

STANDOFF BRACKET SCALE NOT TO SCALE 3



STANDOFF BRACKET BRACKET ISO



STANDOFF BRACKET FRONT ELEVATION

**verizon**

Verizon Wireless  
2765 Mitchell Drive, Suite 9  
Walnut Creek, CA 94596

Client:

**MM** Meridian Management LLC  
18100 Corner Street #2  
Suite 201  
Concord, CA 94518  
T 707.962.2924  
www.meridianmanagement.com

Project Architect:

**ON AIR**

489 Pine St., Suite 101  
Berkeley, CA 94710  
Phone: 707.833.8828  
Fax: 707.833.8611

Site Agent:

**100% Construction Drawings**

Drawing Phase:

**SF ALAMO 012**  
(NEAR) 1955 MEADOW ROAD  
WALNUT CREEK, CA 94596

PS: # 433678

Site Name:

Professional Seal:

It is a violation of law for any person, unless they are acting under the direction of a Licensed Professional Architect/Engineer, to alter this document.

Rev.	Date	Description
01	11/01/17	Coord. Dwg. 100%
02	03/14/18	Coord. Dwg. 100%
03	04/13/18	Coord. Dwg. 100%

Project No.:  
Date: 04/03/18 Job No.:  
Scale: AS SHOWN CAD File:  
Designed By: JG Checked: RB

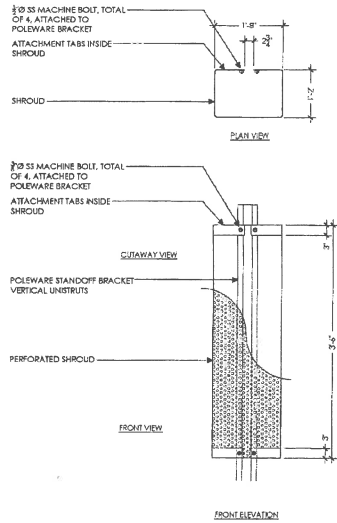
EQUIPMENT DETAILS

Sheet Title:

**A.6**

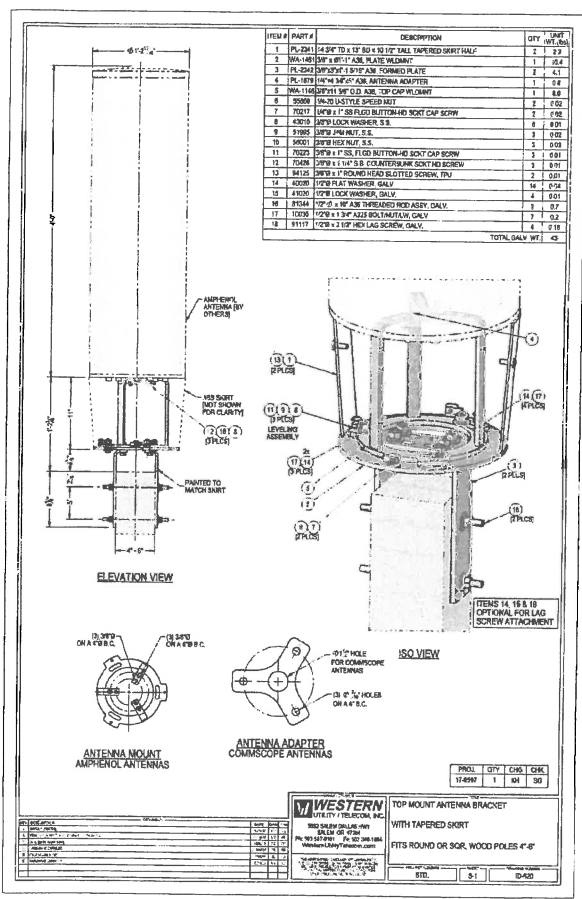
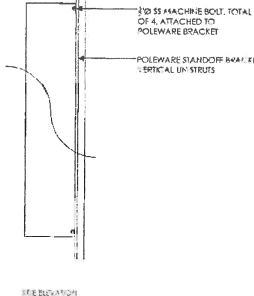
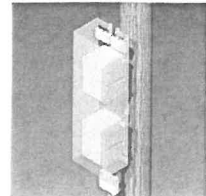
Sheet No.:





**NOTE**

- RRU SHROUD MODEL #1149PS-3071-A1A 3/4 AS MFG. BY POLEWARE, LLC, (475) 215-1119, CN 623A1.
- ALL COMPONENTS TO BE SHOP PRIMAED PAINTED
- UNISTRUT COMPONENTS TO BE MFG. BY UNISTRUT CORPORATION, 1140 W. THORNDALE AVE., PASCAGO, AL 36743, (800) 458-9210.
- CUSTOMER TO SPECIFY SHROUD HEIGHT AT TIME OF ORDERING.



**verizon**

Verizon Wireless  
2785 Mitchell Drive, Suite 9  
Walnut Creek, CA 94598

Client:

Western Management LLC  
285 Oak Grove Street #2  
Suite 201  
Concord, CA 94618  
707.462.3959  
www.westernmanagement.com

Project Architect:

**ON AIR**

420 First St., Suite 101  
Hayward, CA 94543  
Phone: 707.985.8822  
Fax: 707.432-6411

Site Agent:

**100% Construction Drawings**

Drawing Phase:

**SF ALAMO 012**  
(NEAR) 1955 MEADOW ROAD  
WALNUT CREEK, CA 94595  
PSL# 433678

Site Name:

Professional Seal:

It is a violation of law for any person, unless they are acting under the direction of a licensed Professional Architect/Engineer, to alter this document.

Rev.	Date	Description
01	11/01/17	Const. Drawg 90%
02	03/14/18	Const. Drawg 100%
03	04/03/18	Change Drawg 100%

Project No.:  
Date: 04/03/18 Job No.:  
Scale: AS SHOWN CAD File:  
Designed By: JG Checked: RB

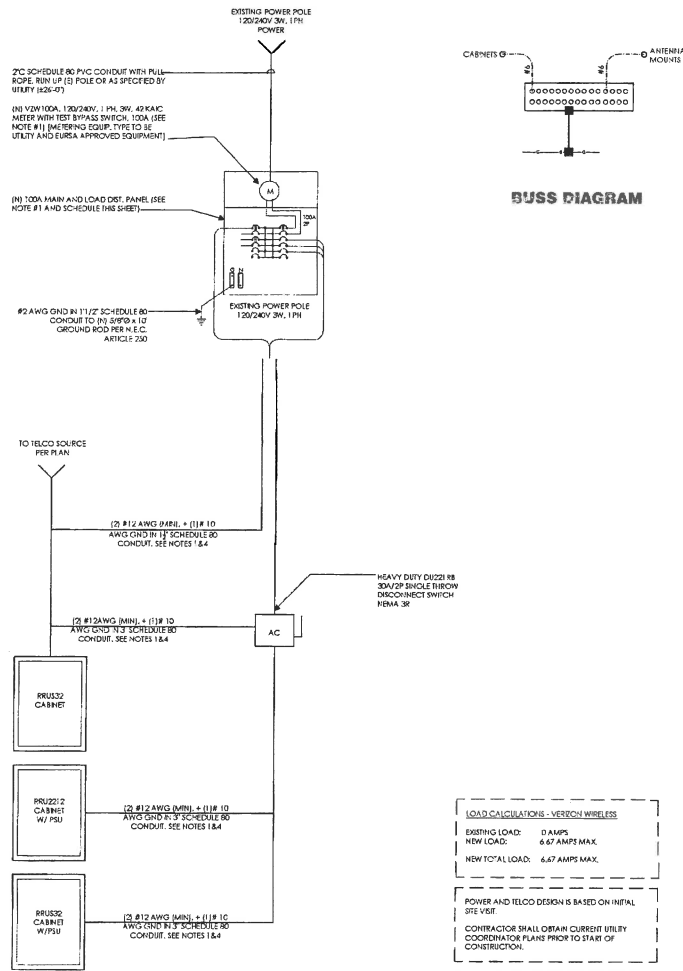
**EQUIPMENT DETAILS**

Sheet Title:

**A.7**

Sheet No.:

© Western Management LLC, 2018



**SINGLE LINE DIAGRAM**

**LOAD CALCULATIONS - VERIFY WIRELESS**

EXISTING LOAD: 0 AMPS  
 NEW LOAD: 6.67 AMPS MAX.  
 NEW TOTAL LOAD: 6.67 AMPS MAX.

POWER AND TELCO DESIGN IS BASED ON INITIAL SITE VISIT  
 CONTRACTOR SHALL OBTAIN CURRENT UTILITY COORDINATION PLANS PRIOR TO START OF CONSTRUCTION.

AVAILABLE FAULT CURRENT PER UTILITY.  
 NOTE: CONTRACTOR TO CHECK WITH UTILITY TO ENSURE ELEC. METER IS BRACED FOR ACTUAL FAULT CURRENT.

**POWER AND TELCO NOTES:**

1. POWER AND TELCO POINTS OF CONNECTION AND ANY EXISTENCES ARE PRELIMINARY AND SUBJECT TO CHANGE BY THE UTILITY COMPANIES.
2. CONTRACTOR SHALL COORDINATE WITH UTILITY COMPANY FOR FINAL AND EXACT WORK/MATERIALS REQUIREMENTS AND CONSTRUCT TO UTILITY ENGINEERING PLANS AND SPECIFICATIONS ONLY WHERE APPLICABLE FOR PROJECT SCOPE OF WORK.
3. CONTRACTOR SHALL FURNISH AND INSTALL CONDUIT, PULL WIRES, CABLE PULL BOXES, CONCRETE ENCASEMENT OF CONDUIT, TRANSFORMER PAD, BACKFILL, POLE RISER, TRENCHING, BACK FILL, AND UTILITY FEES, AND INCLUDE REQUIREMENTS IN SCOPE.
4. CONTRACTOR SHALL LABEL ALL MAIN DISCONNECT SWITCHES AS REQUIRED BY CODE.

**GENERAL ELECTRICAL NOTES:**

1. PROVIDE ALL ELECTRICAL WORK & MATERIALS AS SHOWN ON THE DWGS. AS CALLED FOR HEREIN, & AS IS NECESSARY TO FURNISH A COMPLETE INSTALLATION.
2. THE INSTALLATION SHALL CONFORM TO THE REQUIREMENTS OF THE CURRENT ADOPTED CALIFORNIA ELECTRICAL CODE, STATE OF CALIFORNIA TITLE 24, ALL OTHER APPLICABLE CODES AND ORDINANCES & THE REQUIREMENTS OF THE FIRE MARSHALL. ALL EQUIPMENT & WIRING SHALL BEAR THE APPROVAL STAMP OF UNDERWRITERS LABORATORY (UL) OR AN APPROVED TESTING LABORATORY. PAYMENT FOR ALL INSPECTION FEES AND PERMITS ARE PART OF THIS CONTRACT.
3. THE CONTRACTOR SHALL BE RESPONSIBLE FOR THE SAFETY AND GOOD CONDITION OF ALL MATERIALS & EQUIPMENT FOR THE ENTIRE INSTALLATION & UNIT COMPLETION OR WORK. SPECIFIC MAINTAIN APPROVED & SUITABLE BARRIERS, PROTECTIVE DEVICES & WARNING SIGNS, BE FULLY RESPONSIBLE FOR ANY LOSS OR INJURY TO PERSONS OR PROPERTY RESULTING FROM NEGLIGENCE AND/OR ENFORCEMENT OF ALL SAFETY PRECAUTIONS & WARNINGS.
4. COORDINATE THE ELECTRICAL INSTALLATION WITH ALL OTHER TRADES.
5. ALL SAW CUTTING, TRENCHING, BACK FILLING & PATCHING SHALL BE PART OF THIS CONTRACT.
6. FINALIZE ALL ELECTRICAL SERVICE ARRANGEMENTS, INCLUDING VERIFICATION OF LOCATION'S, DETAILS, COORDINATION OF THE INSTALLATION & PAYMENT OF ACCRUED CHARGES WITH LOCAL POWER COMPANY, VERIFY LOCATION FOR FACILITIES & DETAILS WITH POWER UTILITY. IN ADDITION TO THE REQUIREMENTS SHOWN IN THE CONTRACT DOCUMENTS, WORK SHALL COMPLY WITH CONSTRUCTION STANDARDS & SERVICE REQUIREMENTS OF THE RESPECTIVE UTILITIES, INCLUDING ANY SUPPLEMENTAL DWGS ISSUED & SHALL BE SUBJECT TO APPROVAL OF THESE UTILITIES.
7. ALL WIRING SHALL BE COPPER. INSULATION FOR BRANCH CIRCUIT CONDUCTORS SHALL BE TYPE "THWN" CONDUCTORS LARGER AND #8 AWG MAY BE TYPE "THWN" OR "TWN".
8. PROVIDE CONDUIT SEALS FOR ALL CONDUITS PENETRATING WEATHERPROOFING OR WEATHERPROOF ENCLOSURE ENVELOPE, MAINTAIN SEAL ALL CONDUIT OPENING PENETRATIONS COMPLETELY WATER TIGHT.
9. UNLESS SHOWN OTHERWISE, FUSED DISCONNECT SWITCHES SHALL BE PROVIDED WITH LOW-P-FIX, STUDIAL ELEMENT FUSES SIZED TO EQUIPMENT NAMEPLATE FUSE CURRENT RATINGS. MOTOR STARTERS SHALL BE PROVIDED WITH SIMILARLY SIZED FUSIBLE ELEMENTS, SWITCHES AND OTHER OUTDOOR EQUIPMENT SHALL BE RATED NEMA 3R AND/OR UL LISTED FOR WET ENVIRONMENT.
10. THE CONTRACTOR SHALL BE RESPONSIBLE FOR TESTING THE GROUNDING SYSTEM AND ENSURING A 5 OHM OR LESS GROUNDING PATH. ADDITIONAL GROUND RODS AND/OR CHEMICAL ROD SYSTEM SHALL BE USED TO ACHIEVE THIS REQUIREMENT IF THE GIVEN DESIGN CANNOT BE MADE TO ACHIEVE THIS REQUIREMENT.

**NOTES:**

1. SUBCONTRACTOR SHALL PROVIDE DIST. PANEL AND BREAKERS FOR POWER TO THE BITS UNITS AND THE BITS/UTILITY CABINET.
2. ALL SERVICE EQUIPMENT AND INSTALLATIONS SHALL COMPLY WITH THE N.E.C. AND UTILITY COMPANY AND LOCAL CODE REQUIREMENTS.
3. SUBCONTRACTOR SHALL PROVIDE ELECTRICAL SERVICE ENTRANCE EQUIPMENT WITH FAULT CURRENT RATINGS GREATER THAN THE AVAILABLE FAULT CURRENT FROM THE POWER UTILITY.
4. MAXIMUM ONE WAY CIRCUIT RUN NOT TO EXCEED 75 FEET.



Verizon Wireless  
 2275 Mitchell Drive, Suite 9  
 Walnut Creek, CA 94598

Client:



Maidon Management LLC  
 788 Gus Owen Road #2  
 Suite 25  
 Concord, CA 94518  
 T 925.482.2929  
 www.maidonmanagement.com

Project Architect:

**ON AIR**

465 First St. Walnut, Suite 101  
 Walnut, CA 94598  
 Phone: 925-933-0633  
 Fax: 925-933-0611

Site Agent:

**100% Construction Drawings**

Drawing Phase:

**SF ALAMO 012**  
 [NEAR] 1955 MEADOW ROAD  
 WALNUT CREEK, CA 94595

PSL# 433678

Site Name:



Professional Seal:

It is a violation of law for any person, unless they are acting under the direction of a licensed Professional Architect/Engineer, to alter this document.

Rev.	Date	Description
01	11/07/12	Contr. Dwg. 90%
02	03/14/18	Contr. Dwg. 100%
03	04/03/18	Contr. Dwg. 100%

Project No.: V-12-CA2039

Date: 04/03/18 Job No.:

Scale: AS SHOWN CAD File:

Designed By: JG Checked: RB

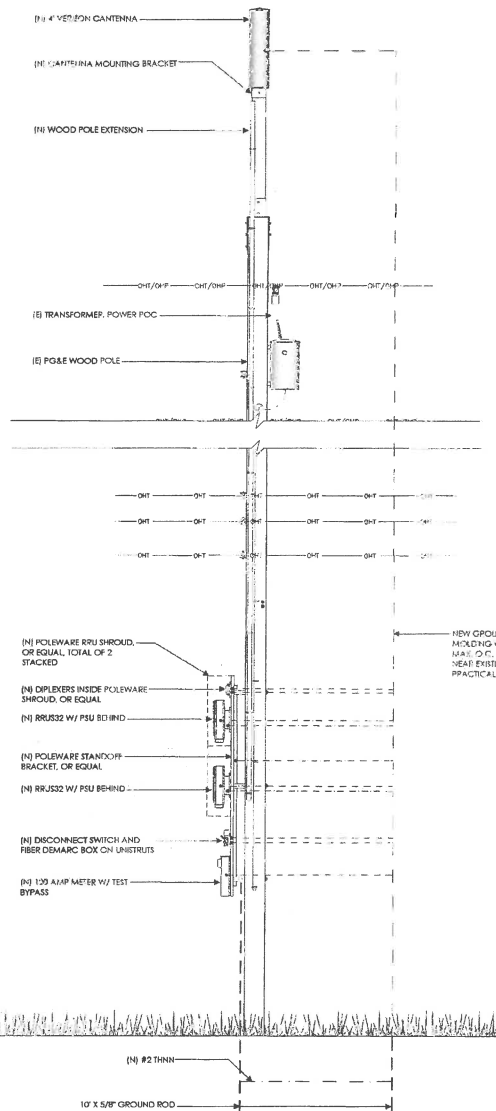
**SINGLE LINE DIAGRAM  
 BUSS DIAGRAM  
 PANEL SCHEDULE**

Sheet Title:

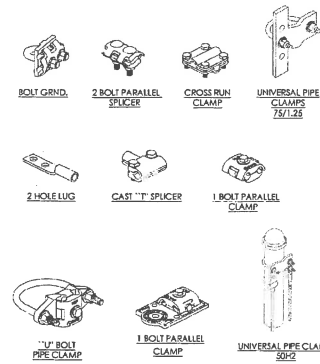
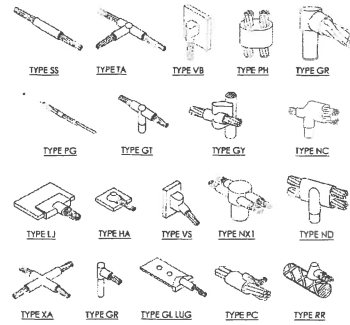
**E.1**

Sheet No.:

© Maidon Management LLC 2018

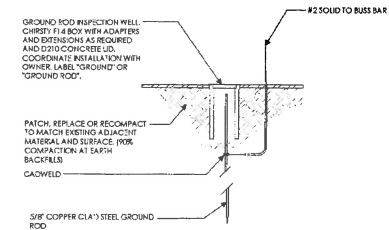


POLE GROUNDING RISER DIAGRAM (TYP.)



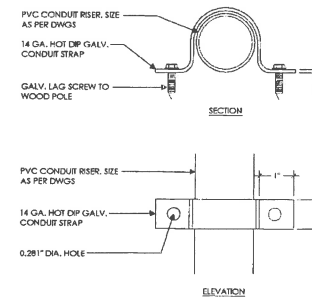
EXOTHERMIC WELD CONNECTION

MECHANICAL CONNECTION



GROUND TEST WELL

NOT USED



1 NOT USED

4 CONDUIT RISER



Verizon Wireless  
2785 Mitchell Drive, Suite 9  
Walnut Creek, CA 94598

Client:



Meridian Management LLC  
785 Oak Grove Road E2  
Suite 201  
Concord, CA 94518  
707.926.8929  
www.meridianmanagement.com

Project Architect:

ON AIR

415 First St, Suite 101  
Sanoma, CA 94543  
Phone: 916.453.8453  
Fax: 916.453.8411

Site Agent:

100% Construction Drawings

Drawing Phase:

SF ALAMO 012  
(NEAR) 1935 MEADOW ROAD  
WALNUT CREEK, CA 94595

PSL# 433678

Site Name:



Professional Seal:

It is a violation of law for any person, unless they are acting under the direction of a licensed Professional Architect/Engineer, to alter this document.

Rev.	Date	Description
01	11/05/17	Comm. Drawg 95%
02	10/14/18	Comm. Drawg 100%
03	04/03/18	Comm. Drawg 100%

Project No.:  
Date: 04/03/18 Job No.:  
Scale: AS SHOWN CAD File:  
Designed By: JG Checked: RB

POLE GROUNDING ELECTRICAL DETAILS

Sheet Title:

E.2

Sheet No.:

©Meridian Management LLC, 2018

**PLAN NOTES:**

1. PLANS DEPICTED ARE GENERAL GUIDELINES FOR TEMPORARY VEHICULAR TRAFFIC CONTROL PLANS (TCP) TO INCLUDE PEDESTRIAN AND WORKER SAFETY. CONTRACTOR IS REQUIRED TO HAVE PREPARED A SITE-SPECIFIC TCP FOR REVIEW AND APPROVAL BY THE HIGHWAY AUTHORITY HAVING JURISDICTION. IF REQUIRED, THE FIRM PREPARING THE TCP SHALL BE AUTHORIZED OR CERTIFIED BY THE AUTHORITY HAVING JURISDICTION.
2. EXTEND CHANNELIZATION DEVICES INTO SHOULDER WHERE APPLICABLE.
3. DISTANCES AS INDICATED IN TABLE 1 SHOULD BE INCREASED FOR CONDITIONS THAT WOULD AFFECT STOPPING, DISTANCE SUCH AS DOWNGRADES OR LIMITED SIGHT DISTANCES. DISTANCES CAN BE DECREASED FOR LOW-SPEED (RESIDENTIAL) AREAS WITH APPROVAL BY THE AUTHORITY HAVING JURISDICTION. NIGHT-TIME WORK IS PROHIBITED UNLESS IT IS REQUIRED AS A CONDITION OF APPROVAL BY THE HIGHWAY AND LOCAL AUTHORITY HAVING JURISDICTION.
4. SHOULDER TAPERS SHOULD BE 1/3 OF THE ON-STREET TAPER LENGTH.
5. MAINTAIN A MINIMUM LANE WIDTH OF 10'.

**LEGEND**

- CHANNELIZING DEVICE
- SIGN
- WORK SPACE
- FLAGGER
- DIRECTION OF TRAFFIC
- FLASHING ARROW SIGN (FAS)

**DOT NOTES:**

1. WHEN LANE CLOSURE IS REQUIRED, THE TRAFFIC CONTROL PLAN SHOULD BE PROVIDED AND NOTARIZED BY AN INDIVIDUAL/COMPANY THAT HAS FLAGGER CONTROL TRAINING CERTIFICATION.
2. "BLUE LIGHTS" (OFF-DUTY POLICE OFFICERS) WILL BE ON SITE FOR LANE CLOSURES AND IF REQUIRED.

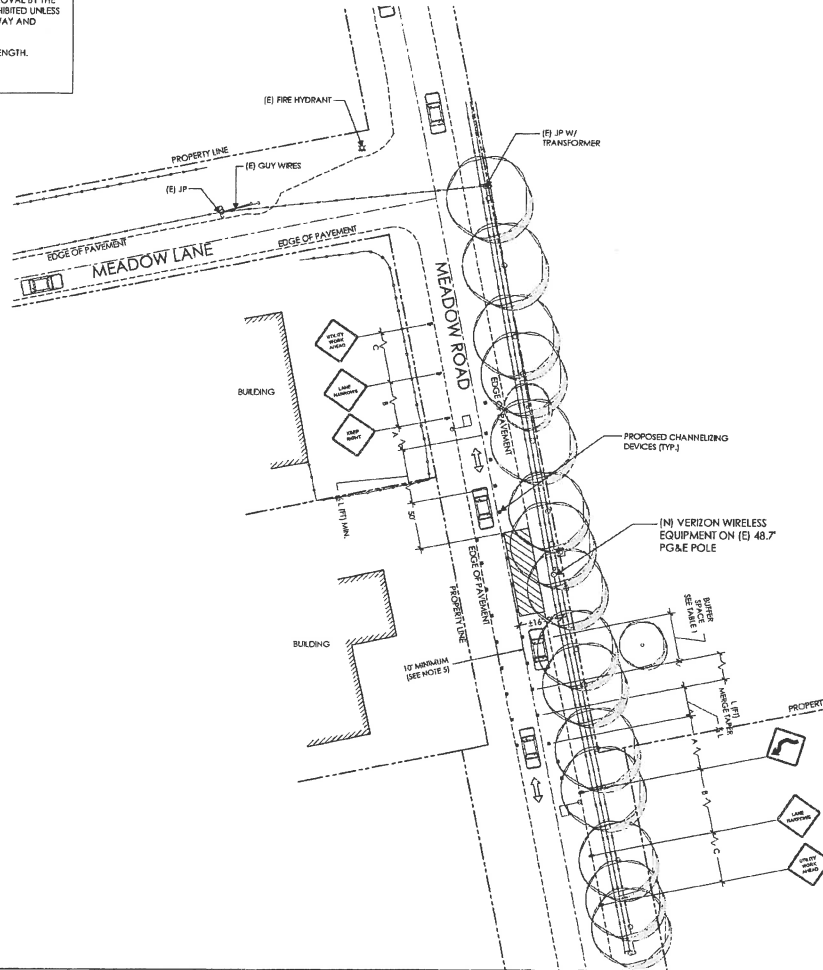


TABLE 1

POSTED SPEED (MPH)	DISTANCE BETWEEN SIGNS			TAPER	BUFFER
	A	B	C		
15	100'	100'	100'	45'	100'
20	100'	100'	100'	80'	115'
25	100'	100'	100'	125'	155'
30	200'	200'	200'	180'	200'
35	200'	200'	200'	245'	250'
40	350'	350'	350'	320'	305'
45	350'	350'	350'	540'	360'
50	500'	500'	500'	600'	425'
55	500'	500'	500'	660'	495'
60	500'	500'	500'	720'	570'
65	500'	500'	500'	780'	645'

NOTES:  
 A) DISTANCES IN FEET UNLESS OTHERWISE NOTED.  
 B) CONTRACTOR TO VERIFY EXISTING SPEED LIMIT.  
 C) DISTANCES SHOWN ARE NOT VALID FOR LIMITED ACCESS HIGHWAYS. CONSULT STATE DOT MANUAL FOR DISTANCES.  
 D) ADJUST DISTANCES TO COMPLY WITH REQUIREMENT OF THE STATE OR LOCAL HIGHWAY AUTHORITY HAVING JURISDICTION. SEE NOTE 1, SHEET TC-2.  
 E) TAPER LENGTHS SHOWN BASED ON 12' LANE WIDTH.

**verizon**  
 Verizon Wireless  
 2785 Mitchell Drive, Suite 9  
 Walnut Creek, CA 94598  
 Client:

**MM** Meridian Management LLC  
 785 Oak Grove Road E2  
 Suite 201  
 Concord, CA 94518  
 Phone: 925-852-8822  
 1.927.292.2628  
 www.meridianmanagement.com  
 Project Architect:

**ON AIR**  
 445 First St. West, Suite 101  
 Sonoma, CA 94965  
 Phone: 707-433-8822  
 Fax: 707-433-8811  
 Site Agent:

100% Construction Drawings  
 (E) LIGHT POLE  
 Drawing Phase:

**SF ALAMO 012**  
 (NEAR) 1155 MEADOW ROAD  
 WALNUT CREEK, CA 94598  
 PSL# 433678

Site Name:

Professional Seal:  
 It is a violation of law for any person, unless they are acting under the direction of a licensed Professional Architect/Engineer, to alter this document.

Rev.	Date	Description
01	11/01/17	Const. Draw 90%
02	03/14/18	Const. Draw 100%
03	04/03/18	Const. Draw 100%

Project No.:  
 Date: 04/03/18 Job No.:  
 Scale: AS SHOWN CAD File:  
 Designed By: JG Checked: RB

**SITE SPECIFIC VEHICLE TRAFFIC CONTROL PLAN**  
 Sheet Title:

**TC.1**  
 Sheet No.:  
 ©Meridian Management LLC, 2018