

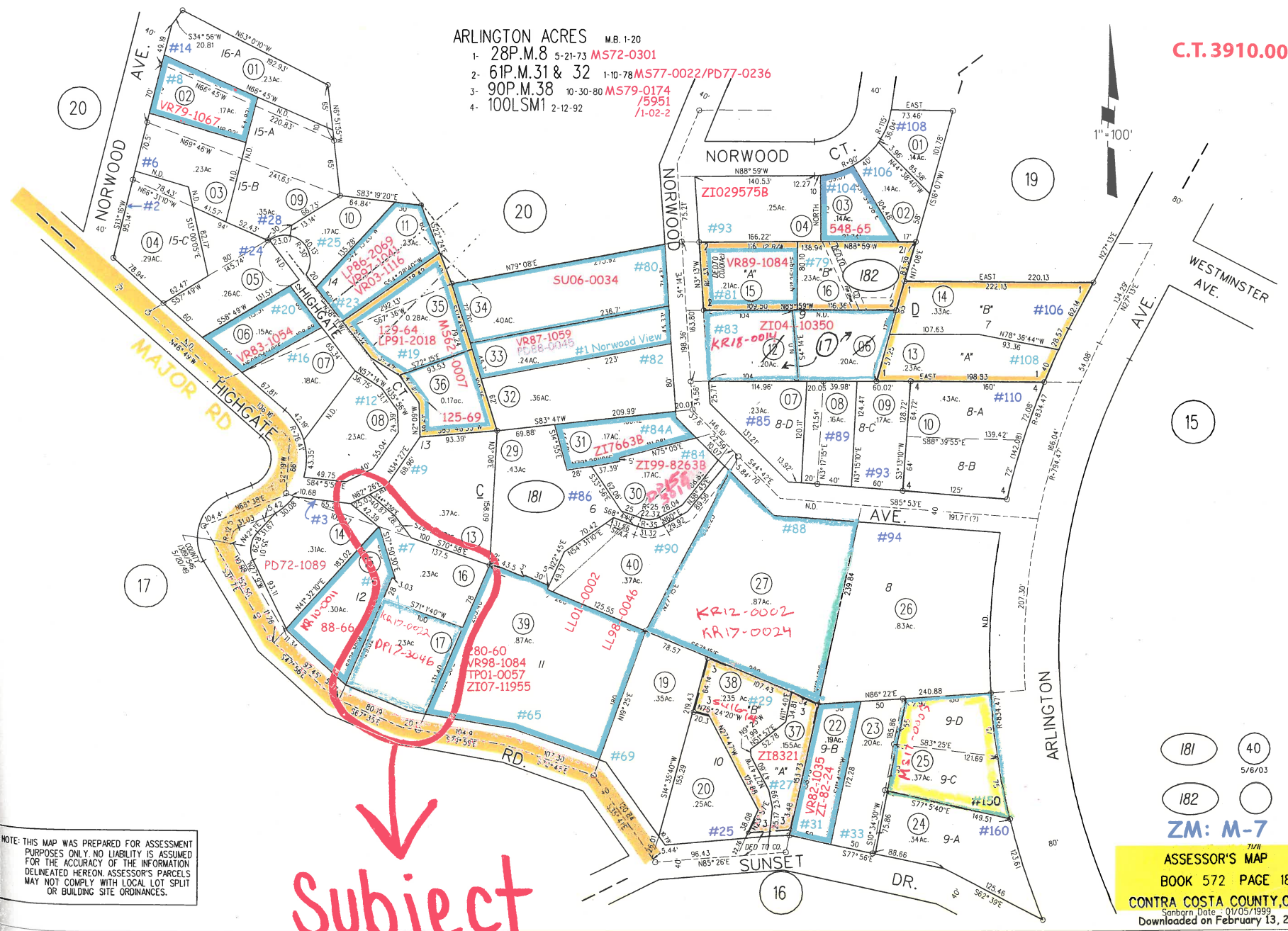
ARLINGTON ACRES

M.B. 1-20

- 1- 28P.M.8 5-21-73 MS72-0301
- 2- 61P.M.31 & 32 1-10-78 MS77-0022/PD77-0236
- 3- 90P.M.38 10-30-80 MS79-0174 /5951 /1-02-2
- 4- 100LSM1 2-12-92

C.T. 3910.00

1" = 100'



NOTE: THIS MAP WAS PREPARED FOR ASSESSMENT PURPOSES ONLY. NO LIABILITY IS ASSUMED FOR THE ACCURACY OF THE INFORMATION DELINEATED HEREON. ASSESSOR'S PARCELS MAY NOT COMPLY WITH LOCAL LOT SPLIT OR BUILDING SITE ORDINANCES.

Subject site

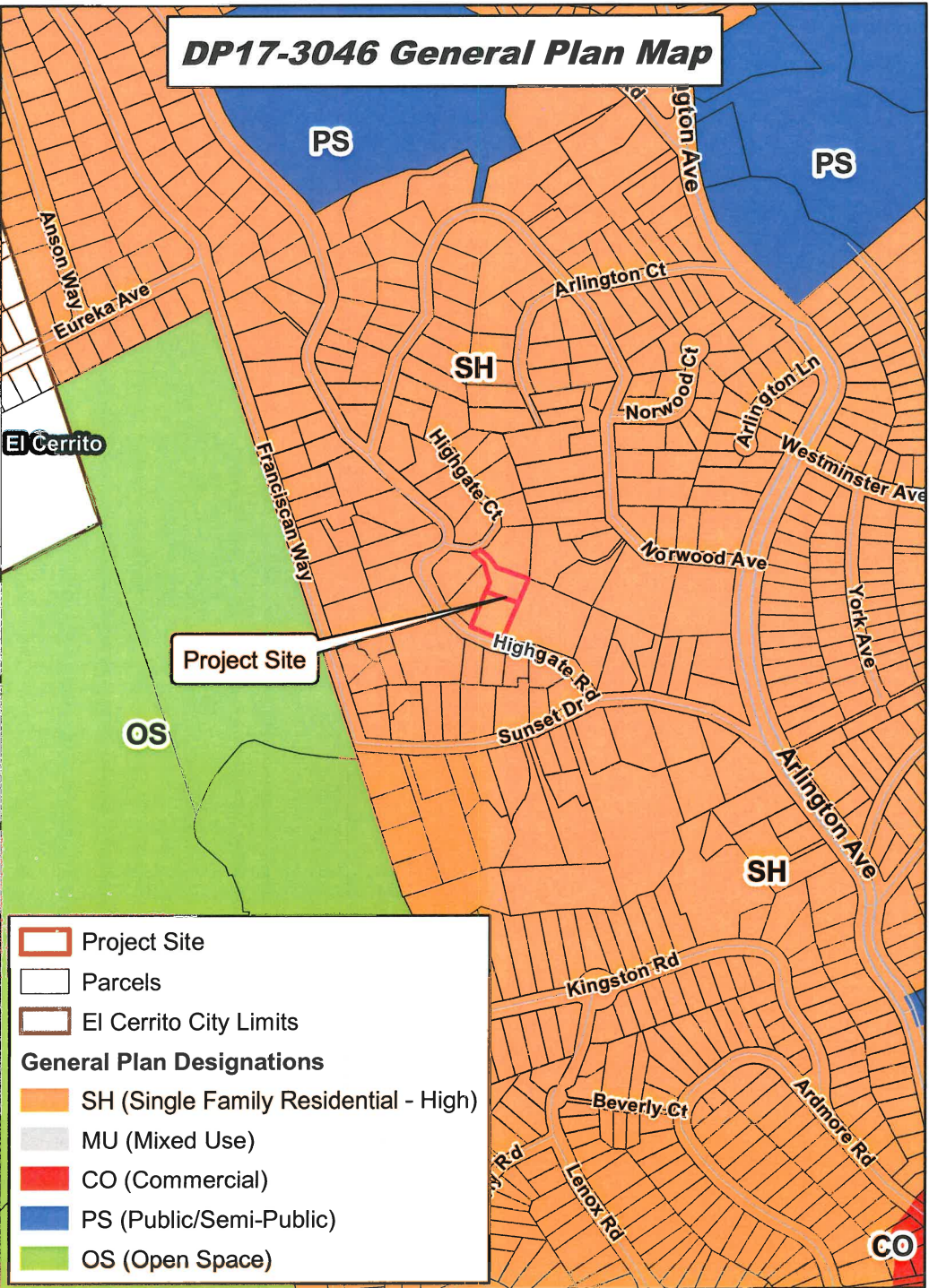
181 40
5/6/03

182

ZM: M-7

ASSESSOR'S MAP
BOOK 572 PAGE 18
CONTRA COSTA COUNTY, CALIF.
Sanborn Date - 01/05/1999
Downloaded on February 13, 2008

DP17-3046 General Plan Map

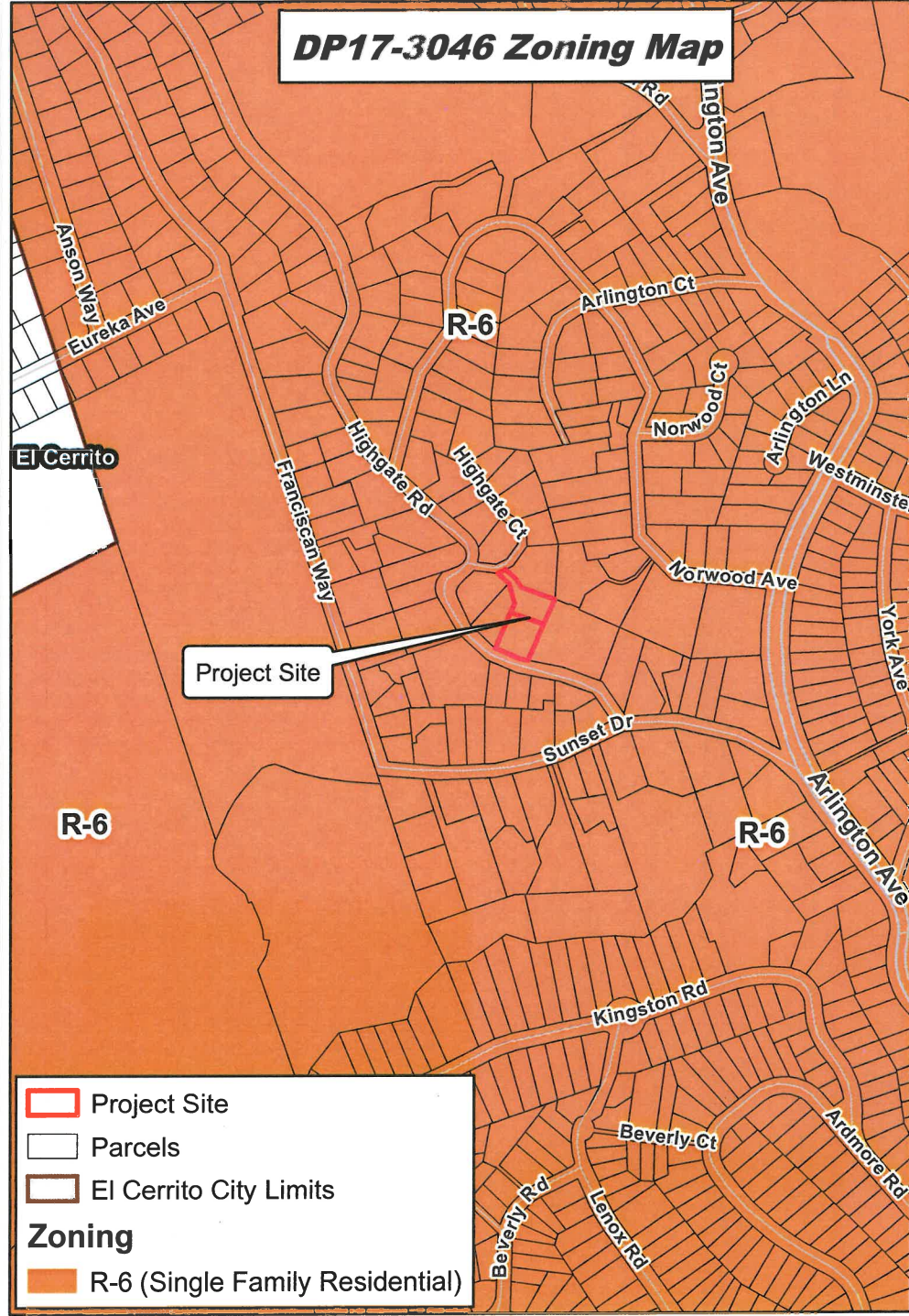


- Project Site
- Parcels
- El Cerrito City Limits

General Plan Designations

- SH (Single Family Residential - High)
- MU (Mixed Use)
- CO (Commercial)
- PS (Public/Semi-Public)
- OS (Open Space)

DP17-3046 Zoning Map



- Project Site
- Parcels
- El Cerrito City Limits

Zoning

- R-6 (Single Family Residential)



Map Created 6/18/2018
 by Contra Costa County Department of
 Conservation and Development, GIS Group
 30 Muir Road, Martinez, CA 94553

This map was created by the Contra Costa County Department of Conservation and Development with data from the Contra Costa County GIS Program. Some base data, primarily City Limits, is derived from the CA State Board of Equalization's tax rate areas. While obligated to use this data the County assumes no responsibility for its accuracy. This map contains copyrighted information and may not be altered. It may be

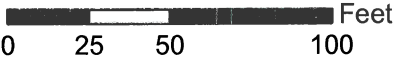


DP17-3046 Aerial Photograph



Legend

-  Project Site
-  Parcels



Map Created 6/18/2018
by Contra Costa County Department of
Conservation and Development, GIS Group
30 Muir Road, Martinez, CA 94553
37:59:41.791N 122:07:03.756W

This map was created by the Contra Costa County Department of Conservation and Development with data from the Contra Costa County GIS Program. Some base data, primarily City Limits, is derived from the CA State Board of Equalization's tax rate areas. While obligated to use this data the County assumes no responsibility for its accuracy. This map contains copyrighted information and may not be altered. It may be

