

# ZONING MAPS

**DP15-3039 General Plan Map**

**Legend**

- Proposed Residence Parcels (Red outline)
- Parcels (Black outline)
- Walnut Creek City Limits (Brown outline)
- SV (Single Family Residential - Very Low) (Light Yellow)
- SL (Single Family Residential - Low) (Yellow)
- AL (Agricultural Lands) (Brown)
- PS (Public/Semi-Public) (Blue)
- OS (Open Space) (Green)

**General Plan**

SV (Single Family Residential - Very Low)

**Map Labels:** OS (Open Space), SL, OS, Project Site, PS (Public and Semi-Public), SL (Single-Family Residential - Low Density), AL (Agricultural Lands), SV (Single-Family Residential - Very Low Density), Walnut Creek, see City of Walnut Creek's general plan, High Eagle Ct, Grey Eagle Dr, Terra Granada, Romero Cir, Romero, Via Larga, Via Lucia, Via Via, Ridgewood Rd, Litina Dr, Manning Ln, Amber Pl, Ramona Way, Garden Park Ct, Vine Ln, Livorna Rd, Danville Blvd, Arbor Ln, Romley Ln, Cervato Dr, Cervato Cir, Lunada Ln, W Livorna Rd, Glade Ln, I-680, Campesin Ln, Lunada Ln, Castle Crest Rd, Sallen Indian Dr, Quail Hill Ct.



A horizontal scale bar labeled "Feet" with markings at 0, 320, 640, and 1,280.

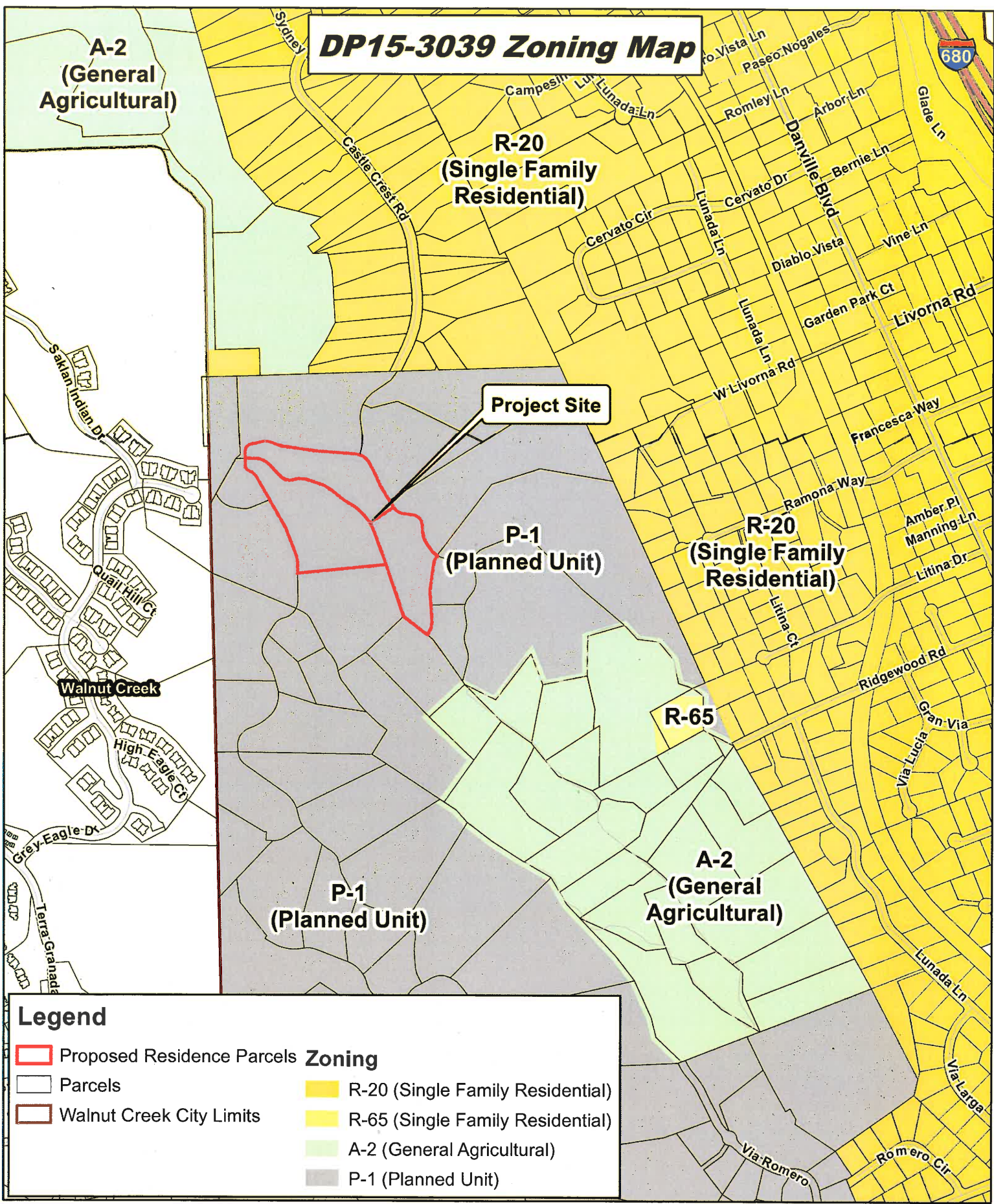
Map Created 4/18/2018  
by Contra Costa County Department of  
Conservation and Development, GIS Group  
30 Muir Road, Martinez, CA 94553  
37:59:41.791N 122:07:03.756W

This map was created by the Contra Costa County Department of Conservation and Development with data from the Contra Costa County GIS Program. Some base data, primarily City Limits, is derived from the CA State Board of Equalization's tax rate areas. While obligated to use this data the County assumes no responsibility for its accuracy. This map contains copyrighted information and may not be altered. It may be reproduced in its current state if the source is cited. Users of this map agree to read and accept the County of Contra Costa disclaimer of liability for geographic information.





# DP15-3039 Zoning Map



## Legend

- |  |                            |                                  |
|--|----------------------------|----------------------------------|
|  | Proposed Residence Parcels | <b>Zoning</b>                    |
|  | Parcels                    | R-20 (Single Family Residential) |
|  | Walnut Creek City Limits   | R-65 (Single Family Residential) |
|  |                            | A-2 (General Agricultural)       |
|  |                            | P-1 (Planned Unit)               |



0 320 640 1,280 Feet

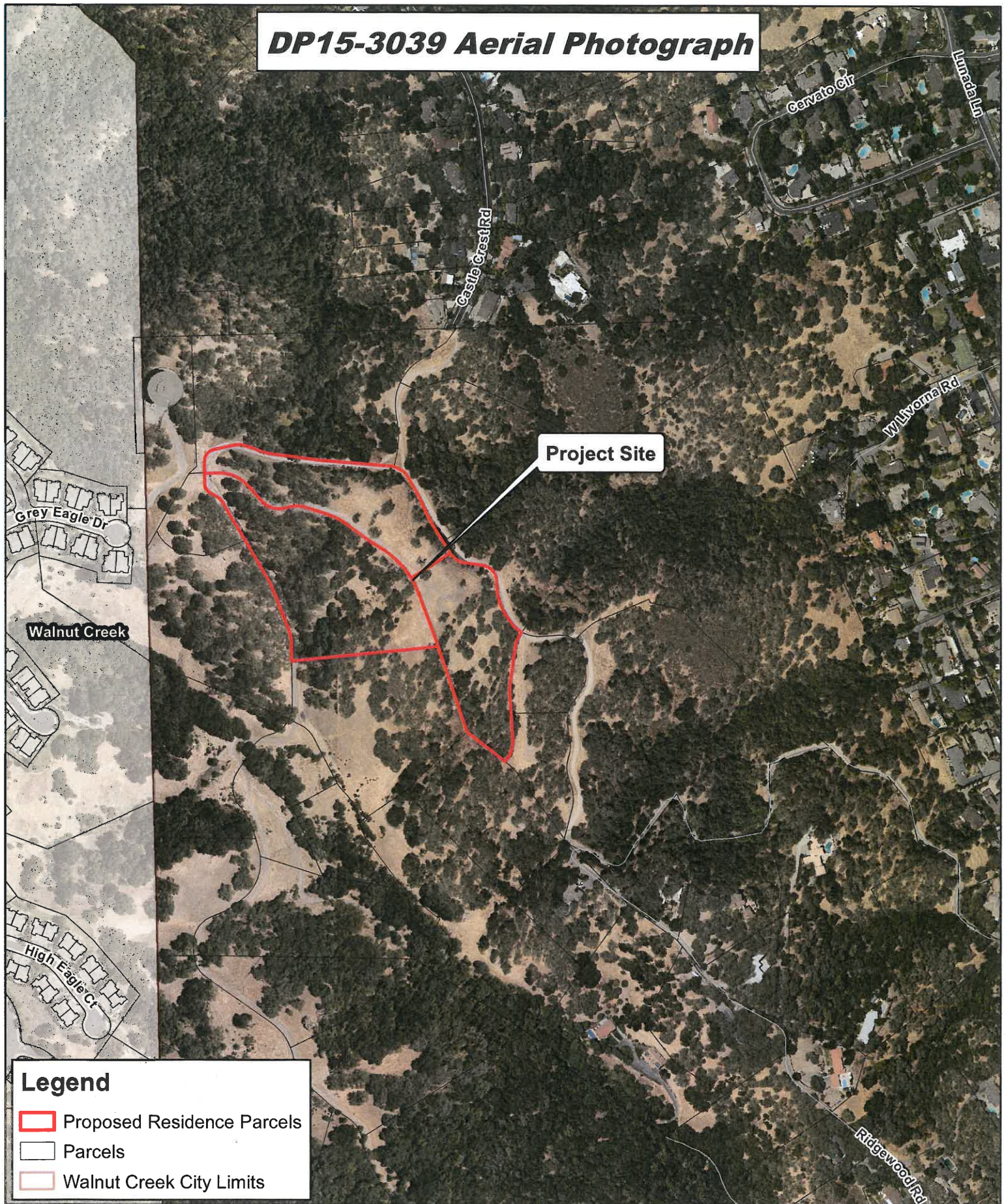
Map Created 4/18/2018  
by Contra Costa County Department of  
Conservation and Development, GIS Group  
30 Muir Road, Martinez, CA 94553  
37:59:41.791N 122:07:03.756W

This map was created by the Contra Costa County Department of Conservation and Development with data from the Contra Costa County GIS Program. Some base data, primarily City Limits, is derived from the CA State Board of Equalization's tax rate areas. While obligated to use this data the County assumes no responsibility for its accuracy. This map contains copyrighted information and may not be altered. It may be reproduced in its current state if the source is cited. Users of this map agree to read and accept the County of Contra Costa disclaimer of liability for geographic information.





# DP15-3039 Aerial Photograph



0 195 390 780 Feet

Map Created 4/18/2018  
by Contra Costa County Department of  
Conservation and Development, GIS Group  
30 Muir Road, Martinez, CA 94553  
37:59:41.791N 122:07:03.756W

This map was created by the Contra Costa County Department of Conservation and Development with data from the Contra Costa County GIS Program. Some base data, primarily City Limits, is derived from the CA State Board of Equalization's tax rate areas. While obligated to use this data the County assumes no responsibility for its accuracy. This map contains copyrighted information and may not be altered. It may be reproduced in its current state if the source is cited. Users of this map agree to read and accept the County of Contra Costa disclaimer of liability for geographic information.

