



# BOARD OF SUPERVISORS

## CONTRA COSTA COUNTY

New Administration Building and  
Emergency Operations Center / Public Safety Building  
March 20, 2018

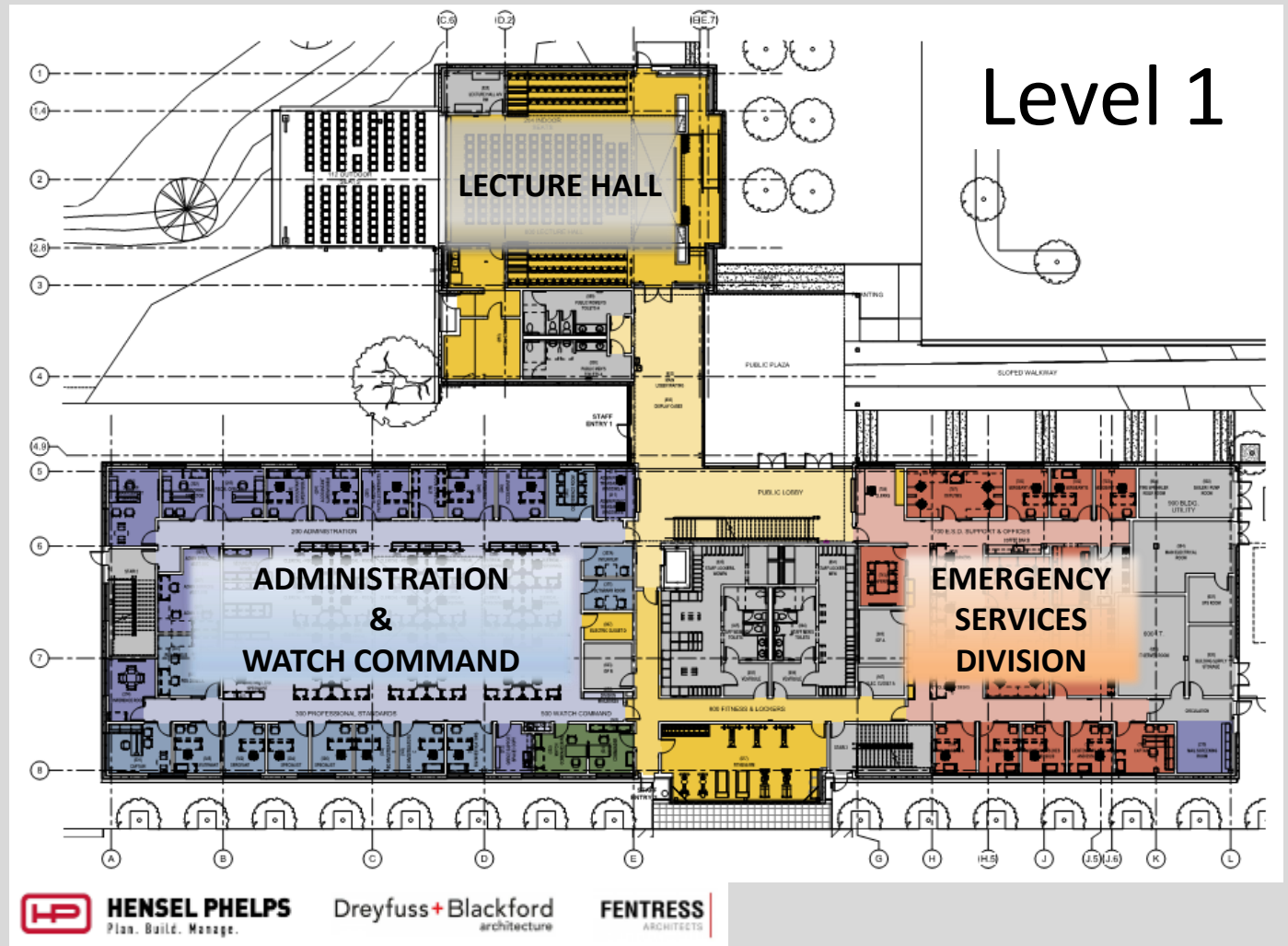


Contra Costa County  
Public Works  
Department



# Emergency Operations Center & Public Safety Building

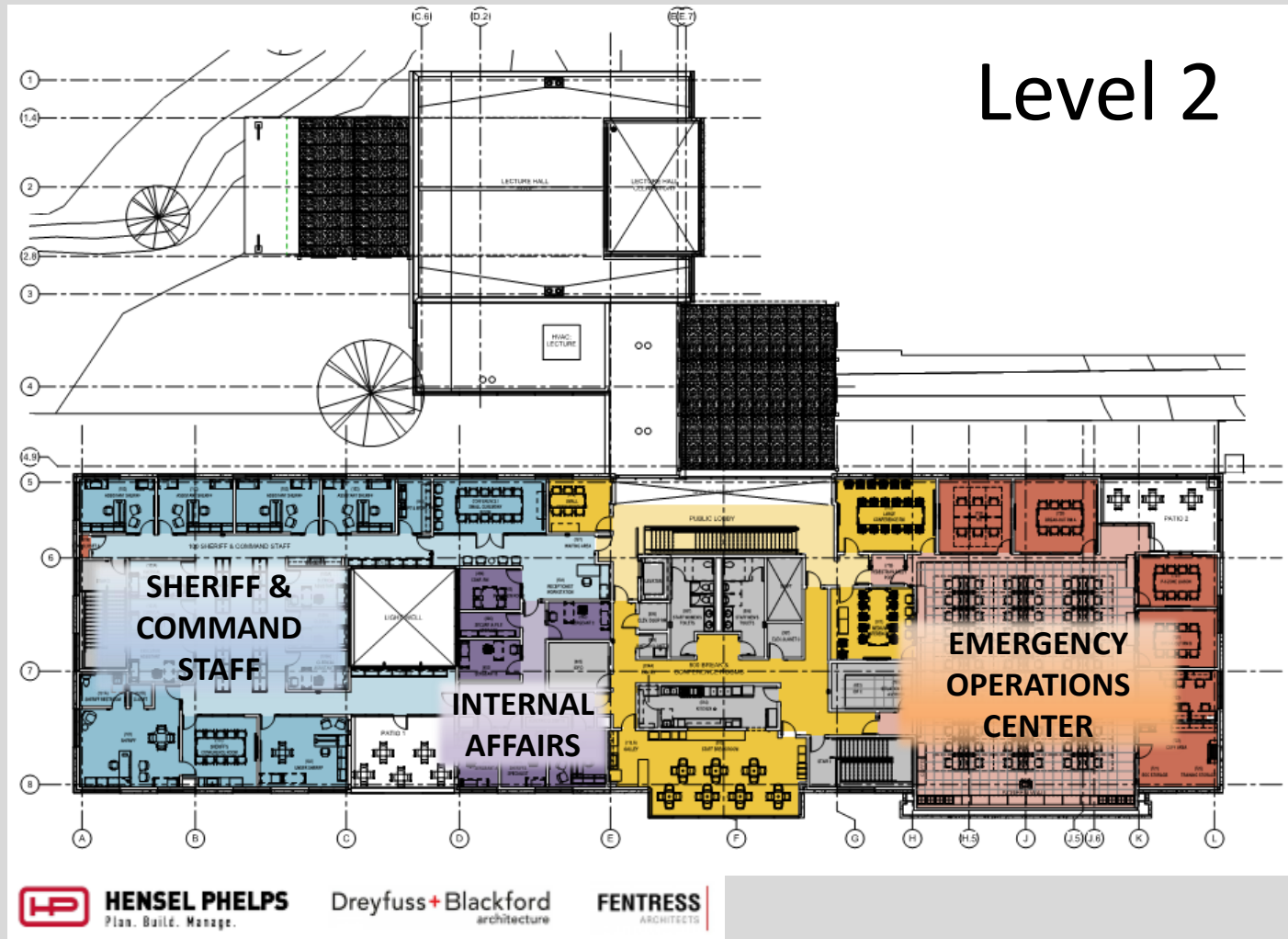


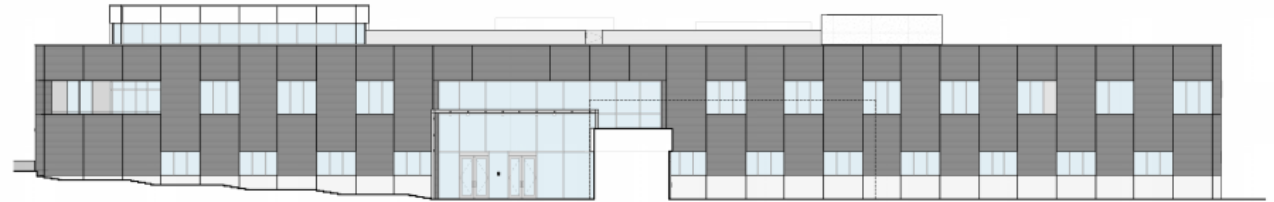




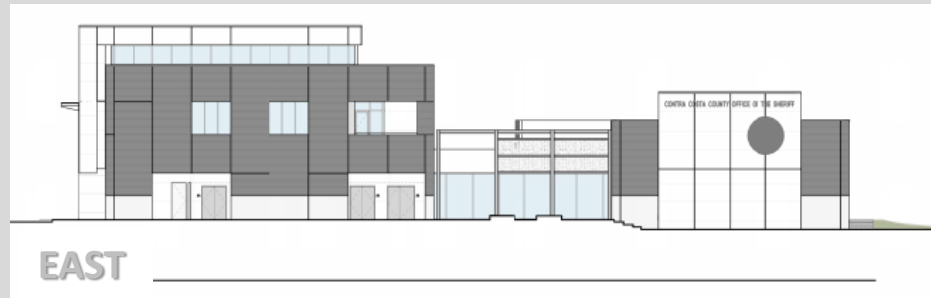


# Level 2





NORTH



EAST



SOUTH

## Elevations



# New Administration Building



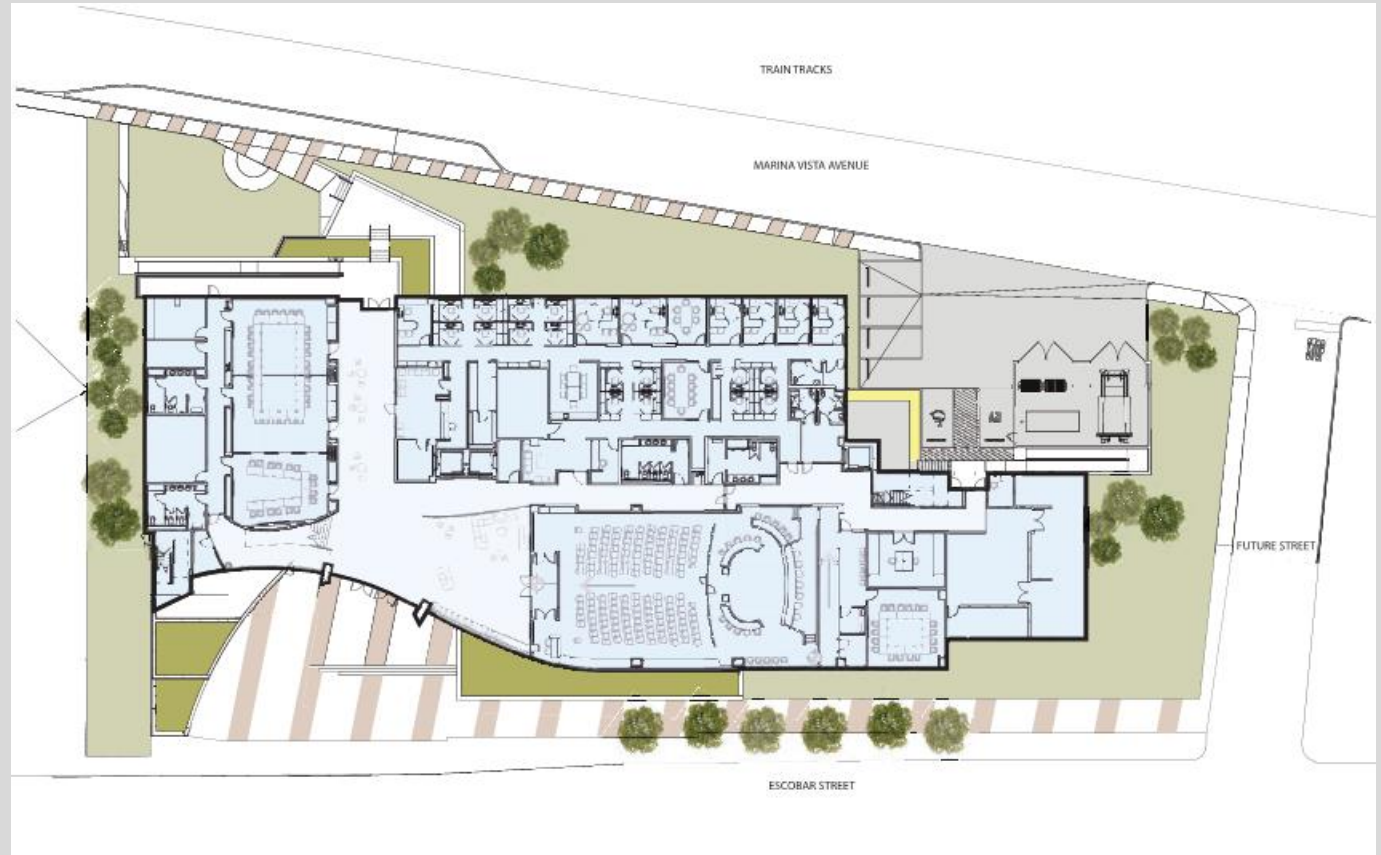






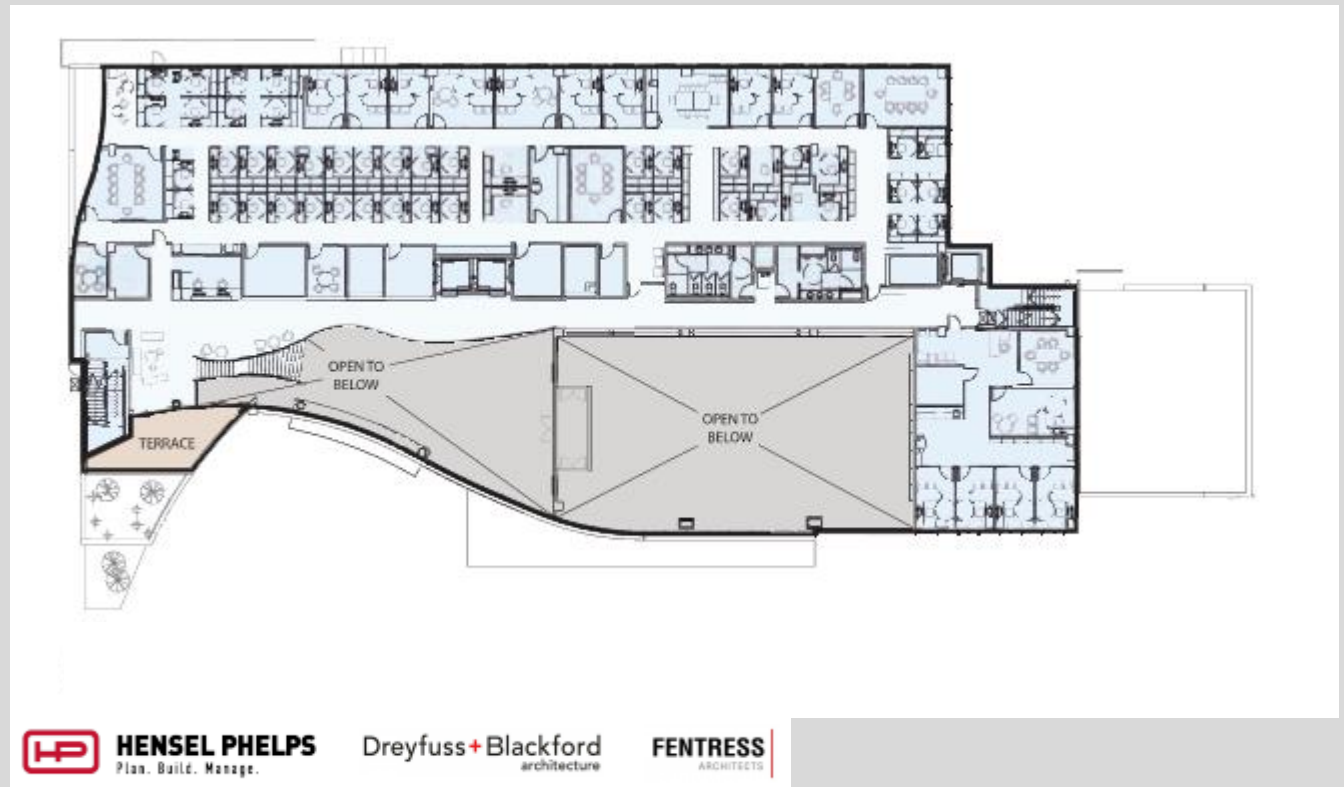


# Ground Floor Plan





# Second Floor Plan



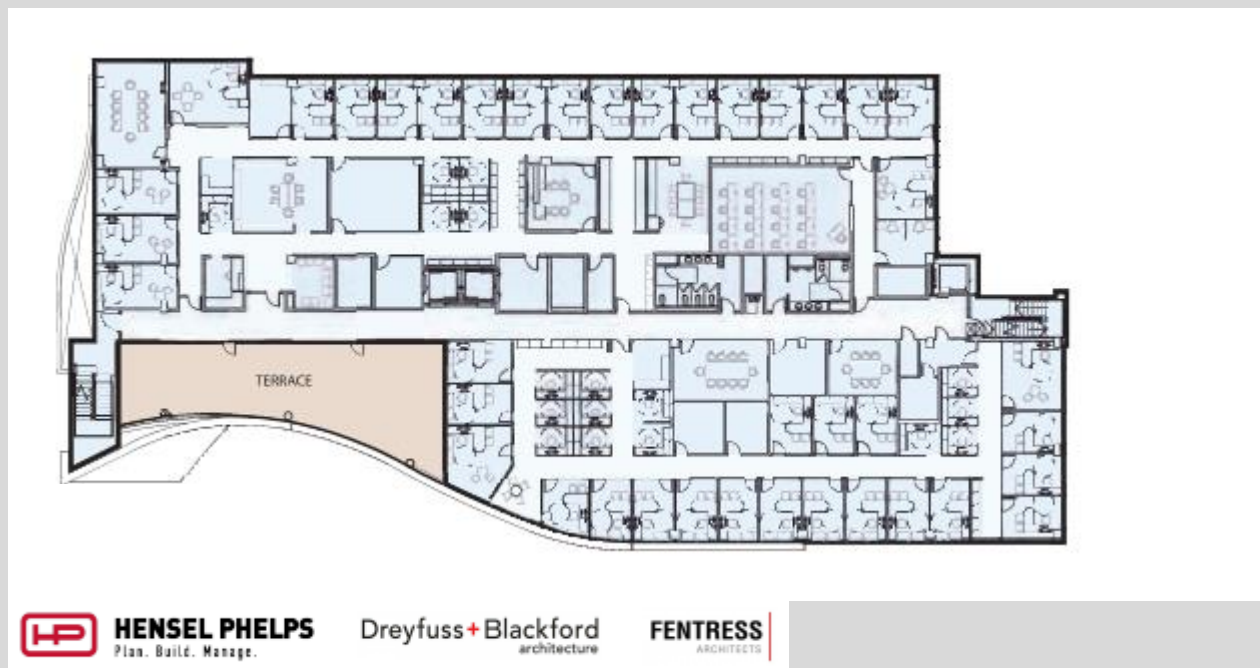
**HENSEL PHELPS**  
Plan. Build. Manage.

**Dreyfuss+Blackford**  
architecture

**FENTRESS**  
ARCHITECTS



# Third Floor Plan



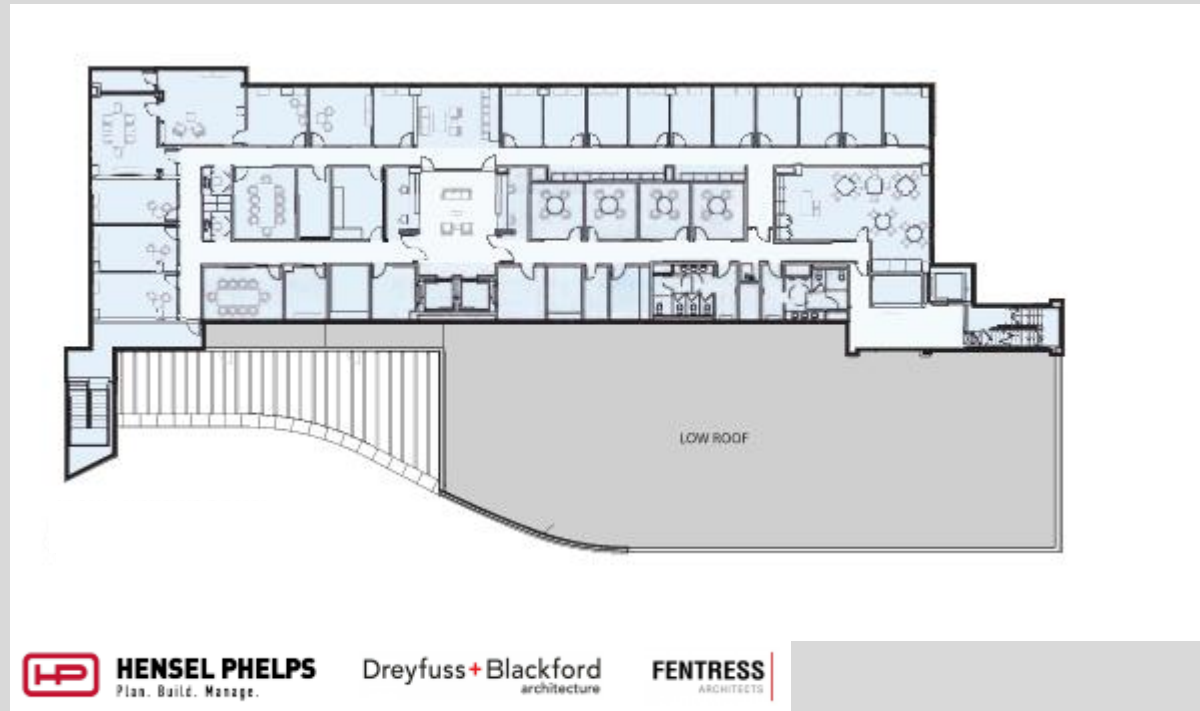
**HENSEL PHELPS**  
Plan. Build. Manage.

**Dreyfuss+Blackford**  
architecture

**FENTRESS**  
ARCHITECTS



# Fourth Floor Plan



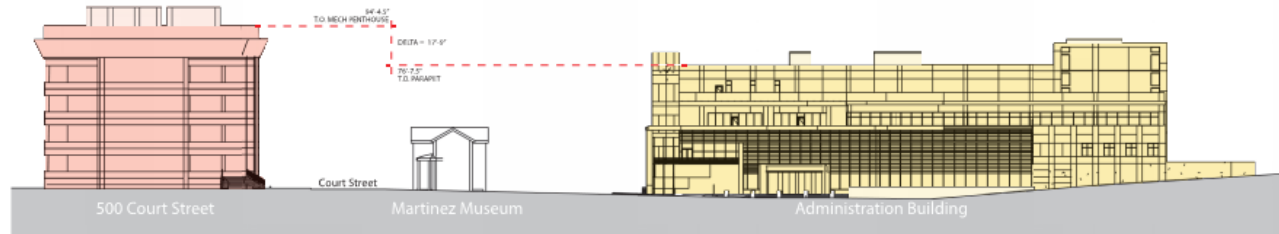




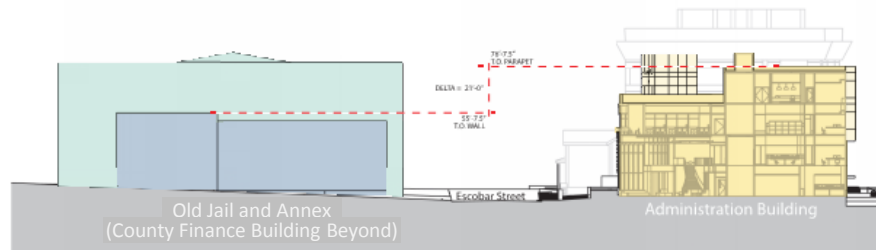
NORTH ELEVATION



SOUTH ELEVATION



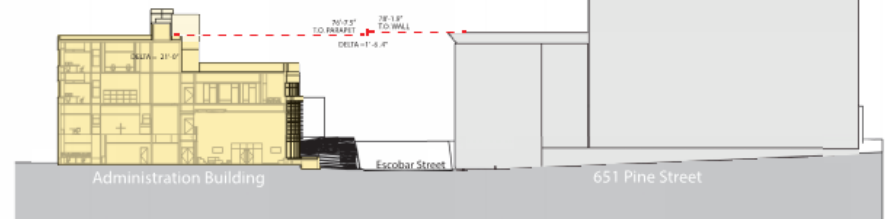
**1** ESCOBAR STREET - SECTION LOOKING NORTH  
SCALE: 1/64"=1'-0"



**2** PINE STREET - SECTION LOOKING WEST  
SCALE: 1/64"=1'-0"



KEY PLAN



**3** PINE STREET - SECTION LOOKING EAST  
SCALE: 1/64"=1'-0"

## Height Comparison



# QUESTIONS?