

RESOLUTION NO. 2016/116

A RESOLUTION OF THE CITY COUNCIL OF THE CITY OF ANTIOCH SUPPORTING THE EXPLORATION OF THE MARSH CREEK MULTI- USE TRAIL CONCEPT THAT WOULD CONNECT THE DELTA TO MOUNT DIABLO AND NEIGHBORING COMMUNITIES; AND SUPPORTING EFFORTS TO IDENTIFY AND SECURE PROJECT STUDY AND IMPLEMENTATION FUNDING FROM LOCAL, STATE, AND FEDERAL TRANSPORTATION, RECREATION, PARK AND OPEN SPACE SOURCES

WHEREAS, Marsh Creek Road is a major thoroughfare that connects Central Contra Costa County and East Contra Costa County and is the gateway to 110,000 acres of open space and recreational areas managed by the East Bay Regional Park District, Contra Costa Water District, State Parks and other local jurisdictions; and

WHEREAS, once this trail and adjacent trails are completed, there will be a continuous non-motorized network in Eastern Contra Costa County, including this link, from Central Contra Costa County to the Delta; and

WHEREAS, a significant number of bicycle trips take place on Marsh Creek Road, in spite of the lack of a bicycle path or dedicated lanes; and

WHEREAS, in East Contra Costa County, the Marsh Creek Trail currently runs from the Big Break Regional Shoreline in the City of Oakley to the City of Brentwood's southern city limits, leaving a gap between that terminus and trails in Clayton; and

WHEREAS, Marsh Creek Road within the City of Clayton ("Clayton") has an existing Class II bicycle lane, which connects to Clayton's extensive trail network into the City of Concord ("Concord") and Mount Diablo State Park; and

WHEREAS, the completed multi-use trail would create a new, major non-motorized east-west thoroughfare for expanded and safer commuting and recreational opportunities; and

WHEREAS, improved access to separated trails of the type proposed, are consistently shown to substantially increase use of non-motorized modes of travel relative to facilities in the shared roadway; and

WHEREAS, construction of the trail could be performed in conjunction with restoration of Marsh Creek, as anticipated in the East Contra Costa County Habitat Conservation Plan/Natural Community Conservation Plan and be constructed in a sensitive manner that reflects the scenic and natural resources of the area.

NOW, THEREFORE, BE IT RESOLVED that the City Council of the City of Antioch does hereby support the exploration of the Marsh Creek Multi-Use Trail concept that would connect the Delta to Mount Diablo and neighboring communities; and

supporting efforts to identify and secure project study and implementation funding from local, state, and federal transportation, recreation, park and open space sources.

* * * * *

I HEREBY CERTIFY that the foregoing Resolution was passed and adopted by the City Council of the City of Antioch at a regular meeting thereof, held on the 25th day of October 2016, by the following vote:

AYES: Council Members Wilson, Ogorchock, Tiscareno, Rocha and Mayor Harper

NOES: None

ABSENT: None



ARNE SIMONSEN
CITY CLERK OF THE CITY OF ANTIOCH

RESOLUTION NO. 2016-113

A RESOLUTION OF THE CITY COUNCIL OF THE CITY OF BRENTWOOD SUPPORTING THE EXPLORATION OF THE MARSH CREEK MULTI-USE TRAIL CONCEPT THAT WOULD CONNECT THE DELTA TO MOUNT DIABLO AND NEIGHBORING COMMUNITIES; AND SUPPORTING EFFORTS TO IDENTIFY AND SECURE PROJECT STUDY AND IMPLEMENTATION FUNDING FROM LOCAL, STATE, AND FEDERAL TRANSPORTATION, RECREATION, PARK AND OPEN SPACE SOURCES.

WHEREAS, Marsh Creek Road is a major thoroughfare that connects Central Contra Costa County and East Contra Costa County and is the gateway to 110,000 acres of open space and recreational areas managed by the East Bay Regional Park District, Contra Costa Water District, State Parks and other local jurisdictions; and

WHEREAS, a significant number of bicycle trips take place on Marsh Creek Road, in spite of the lack of a bicycle path or a dedicated lane; and

WHEREAS, Marsh Creek Road within the City of Clayton ("Clayton") has an existing Class II bicycle lane, which connects to Clayton's extensive trail network into the City of Concord ("Concord") and Mount Diablo State Park; and

WHEREAS, in East Contra Costa County, the Marsh Creek Trail currently runs from the Big Break Regional Shoreline in the City of Oakley ("Oakley") to the City of Brentwood's ("Brentwood") southern city limits, leaving a gap between that terminus and trails in Clayton; and

WHEREAS, the completed multi-use trail would create a new major non-motorized east-west thoroughfare for expanded and safer commuting and recreational opportunities, would provide non-motorized access to Downtown Clayton, Diablo View Middle School, Mount Diablo State Park, Round Valley Regional Preserve, and the Marsh Creek Trail through the cities of Brentwood and Oakley; and

WHEREAS, once this trail and adjacent trails are completed, there will be one continuous non-motorized route from Central Contra Costa County to the Delta; and

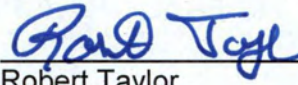
WHEREAS, improved access to separated trails, of the type proposed, are consistently shown to substantially increase use of non-motorized modes of travel relative to facilities in the shared roadway; and

WHEREAS, construction of the trail could be performed in conjunction with restoration of Marsh Creek, as anticipated in the East Contra Costa County Habitat Conservation Plan/Natural Community Conservation Plan and be constructed in a sensitive manner that reflects the scenic and natural resources of the area.

NOW, THEREFORE, BE IT RESOLVED that the City Council of the City of Brentwood does hereby support the exploration of the Marsh Creek Multi-Use Trail concept that would connect the Delta to Mount Diablo and neighboring communities; and supporting efforts to identify and secure project study and implementation funding from local, state, and federal transportation, recreation, park and open space sources.


PASSED, APPROVED AND ADOPTED by the City Council of the City of Brentwood at a regular meeting held on the 23rd day of August 2016 by the following vote:

AYES:	Barr, Bryant, Clare, Stonebarger, Taylor
NOES:	None
ABSENT:	None
ABSTAIN:	None



Robert Taylor
Mayor

ATTEST:



Margaret Wimberly, MMC
City Clerk

RESOLUTION NO. 46 - 2016

A RESOLUTION SUPPORTING THE CONCEPT OF THE MARSH CREEK CORRIDOR MULTI-USE TRAIL CONNECTING THE DELTA SHORELINE WITH MOUNT DIABLO

THE CITY COUNCIL City of Clayton, California

WHEREAS, Marsh Creek Road is a major thoroughfare connecting Central and East Contra Costa County and is the gateway to 110,000 acres of open space and recreational areas managed by the East Bay Regional Park District, Contra Costa Water District, State Parks and other local jurisdictions; and

WHEREAS, Marsh Creek Road has a significant number of bicycle trips without a bicycle path or dedicated lane; and

WHEREAS, Marsh Creek Road within the City of Clayton has an existing Class II bicycle lane, which connects to Clayton's extensive trail network linking Concord and Mount Diablo State Park; and

WHEREAS, in East Contra Costa County, the Marsh Creek Trail currently runs from the Big Break Regional Shoreline in Oakley to the southern city limits of the City of Brentwood, leaving a gap between that terminus and trails in the City of Clayton; and

WHEREAS, the Contra Costa Transportation Authority's Countywide Bicycle and Pedestrian Plan call for bicycle facilities along Marsh Creek Road; and

WHEREAS, the completed multi-use trail would create a new major non-motorized east-west thoroughfare for expanded and safer commuting and recreational opportunities, would provide non-motorized access to Downtown Clayton, Diablo View Middle School, Mount Diablo State Park, Round Valley Regional Preserve, and the Marsh Creek Trail through Brentwood and Oakley; and

WHEREAS, once this trail and adjacent trails are completed, there will be one continuous non-motorized route from Central Contra Costa County to the Delta shoreline; and

WHEREAS, improved access to separated trails, of the type proposed, are consistently shown to substantially increase use of non-motorized modes of travel relative to facilities in the shared roadway; and

WHEREAS, construction of the trail could be performed in conjunction with restoration of Marsh Creek, as anticipated in the East Contra Costa County Habitat Conservation Plan / Natural Community Conservation Plan and be constructed in a sensitive manner that reflects the scenic and natural resources of the area.

NOW, THEREFORE, BE IT RESOLVED BY THE CITY COUNCIL OF CLAYTON, CALIFORNIA THAT:

SECTION 1. The City Council does hereby find and affirm the above noted Recitals are true and correct are hereby incorporated in the body of this Resolution as if restated in full.

SECTION 2. The City Council does hereby support exploration of the concept of the Marsh Creek Multi-Use Trail, and will support efforts to identify and secure funding for this project, including the study and potential implementation, in local, state, and federal transportation, recreation, park, and open space funding efforts.

PASSED, APPROVED AND ADOPTED by the City Council of Clayton, California at a regular public meeting thereof held on 19th day of July 2016, by the following vote:

AYES: Mayor Geller, Vice Mayor Diaz, Councilmembers Haydon and Pierce.

NOES: None.

ABSENT: Councilmember Shuey.

ABSTAIN: None.

THE CITY COUNCIL OF CLAYTON, CA



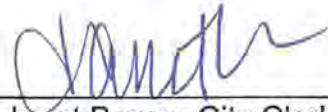
HOWARD GELLER, Mayor

ATTEST:



Janet Brown, City Clerk

I hereby certify that the foregoing Resolution was duly adopted and passed by the City Council of Clayton, California at a regular public meeting thereof held on July 19, 2016.

A handwritten signature in blue ink, appearing to read "Janet Brown", is written over a horizontal line.

Janet Brown, City Clerk

RESOLUTION NO. 153-16

A RESOLUTION OF THE CITY COUNCIL OF THE CITY OF OAKLEY SUPPORTING THE EXPLORATION OF THE MARSH CREEK MULTI-USE TRAIL CONCEPT THAT COULD CONNECT THE DELTA TO MOUNT DIABLO AND NEIGHBORING COMMUNITIES; AND SUPPORTING EFFORTS TO IDENTIFY AND SECURE PROJECT STUDY AND IMPLEMENTATION FUNDING FROM LOCAL, STATE, AND FEDERAL TRANSPORTATION, RECREATION, PARK AND OPEN SPACE SOURCES

WHEREAS, Marsh Creek Road is a major thoroughfare that connects Central Contra Costa County and East Contra Costa County, and is the gateway to 110,000 acres of open space and recreational areas managed by the East Bay Regional Park District, Contra Costa Water District, State Parks and other local jurisdictions; and

WHEREAS, a significant number of bicycle trips take place on Marsh Creek Road, in spite of the lack of a bicycle path or a dedicated lane; and

WHEREAS, Marsh Creek Road within the City of Clayton ("Clayton") has an existing Class II bicycle lane, which connects to Clayton's extensive trail network into the City of Concord ("Concord") and Mount Diablo State Park; and

WHEREAS, in East Contra Costa County, the Marsh Creek Trail currently runs from the Big Break Regional Shoreline in the City of Oakley ("Oakley") to the City of Brentwood's ("Brentwood") southern city limits, leaving a gap between that terminus and trails in Clayton; and

WHEREAS, the completed multi-use trail would create a new major non-motorized east-west thoroughfare for expanded and safer commuting and recreational opportunities, would provide non-motorized access to Downtown Clayton, Diablo View Middle School, Mount Diablo State Park, Round Valley Regional Preserve, and the Marsh Creek Trail through the cities of Brentwood and Oakley; and

WHEREAS, once this trail and adjacent trails are completed, there will be one continuous non-motorized route from Central Contra Costa County to the Delta; and

WHEREAS, improved access to separated trails, of the type proposed, are consistently shown to substantially increase use of non-motorized modes of travel relative to facilities in the shared roadway; and

WHEREAS, construction of the trail could be performed in conjunction with restoration of Marsh Creek, as anticipated in the East Contra Costa County Habitat Conservation Plan/Natural Community Conservation Plan and be constructed in a sensitive manner that reflects the scenic and natural resources of the area.

NOW, THEREFORE, BE IT RESOLVED that the City Council of the City of Oakley does hereby support the exploration of the Marsh Creek Multi-Use Trail concept that would connect the Delta to Mount Diablo and neighboring communities; and supporting efforts to identify and secure project study and implementation funding from local, state, and federal transportation, recreation, park and open space sources.

PASSED, APPROVED AND ADOPTED by the City Council of the City of Oakley at a regular meeting held on the 11th day of October, 2016 by the following vote:

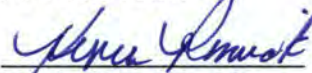
AYES: Hardcastle, Higgins, Perry, Pope, Romick

NOES:

ABSENT:

ABSTENTIONS:

APPROVED:


Kevin Romick, Mayor

ATTEST:


Libby Vreonis, City Clerk

10-12-16
Date

THE BOARD OF SUPERVISORS OF CONTRA COSTA COUNTY, CALIFORNIA

and for Special Districts, Agencies and Authorities Governed by the Board

Adopted this Resolution on 04/12/2016 by the following vote:

AYE: ☒ 5 **John Gioia**
Candace Andersen
Mary N. Piepho
Karen Mitchoff
Federal D. Glover

NO: ☐

ABSENT: ☐

ABSTAIN: ☐

RECUSE: ☐



Resolution No. 2016/326

RESOLUTION OF THE CONTRA COSTA COUNTY BOARD OF SUPERVISORS SUPPORTING THE CONCEPT OF A MARSH CREEK CORRIDOR MULTI-USE TRAIL THAT CONNECTS THE DELTA TO MOUNT DIABLO AND NEIGHBORING COMMUNITIES

WHEREAS, Marsh Creek Road is a major thoroughfare that connects Central Contra Costa County and East Contra Costa County and is the gateway to 110,000 acres of open space and recreational areas managed by the East Bay Regional Park District, Contra Costa Water District, State Parks and other local jurisdictions; and

WHEREAS, a significant number of bicycle trips take place on Marsh Creek Road, in spite of the lack of a bicycle path or a dedicated lane; and

WHEREAS, Marsh Creek Road within Clayton has an existing Class II bicycle lane, which connects to Clayton's extensive trail network into Concord and Mount Diablo State Park; and

WHEREAS, in East Contra Costa County, the Marsh Creek Trail currently runs from the Big Break Regional Shoreline in Oakley to the southern city limits of the City of Brentwood, leaving a gap between that terminus and trails in the City of Clayton; and

WHEREAS, the completed multi-use trail would create a new major non-motorized east-west thoroughfare for expanded and safer commuting and recreational opportunities, would provide non-motorized access to Downtown Clayton, Diablo View Middle School, Mount Diablo State Park, Round Valley Regional Preserve, and the Marsh Creek Trail through Brentwood and Oakley; and

WHEREAS, once this trail and adjacent trails are completed, there will be one continuous non-motorized route from Central Contra Costa County to the Delta; and

WHEREAS, improved access to separated trails, of the type proposed, are consistently shown to substantially increase use of non-motorized modes of travel relative to facilities in the shared roadway; and

WHEREAS, construction of the trail could be performed in conjunction with restoration of Marsh Creek, as anticipated in the East Contra Costa County Habitat Conservation Plan / Natural Community Conservation Plan and be constructed in a sensitive manner that reflects the scenic and natural resources of the area.

NOW, THEREFORE, BE IT RESOLVED that the CONTRA COSTA COUNTY BOARD OF SUPERVISORS will support exploration of the concept of the Marsh Creek Corridor Multi-Use Trail, and will support efforts to identify and secure funding for this project, including study and potential implementation, in local, state, and federal transportation, recreation, park and open space funding efforts.

I hereby certify that this is a true and correct copy of an action taken and entered on the minutes of the Board of Supervisors on the date shown.

ATTESTED: April 12, 2016

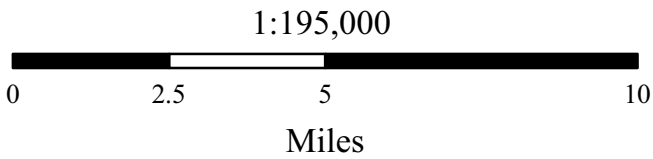
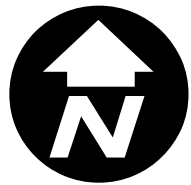
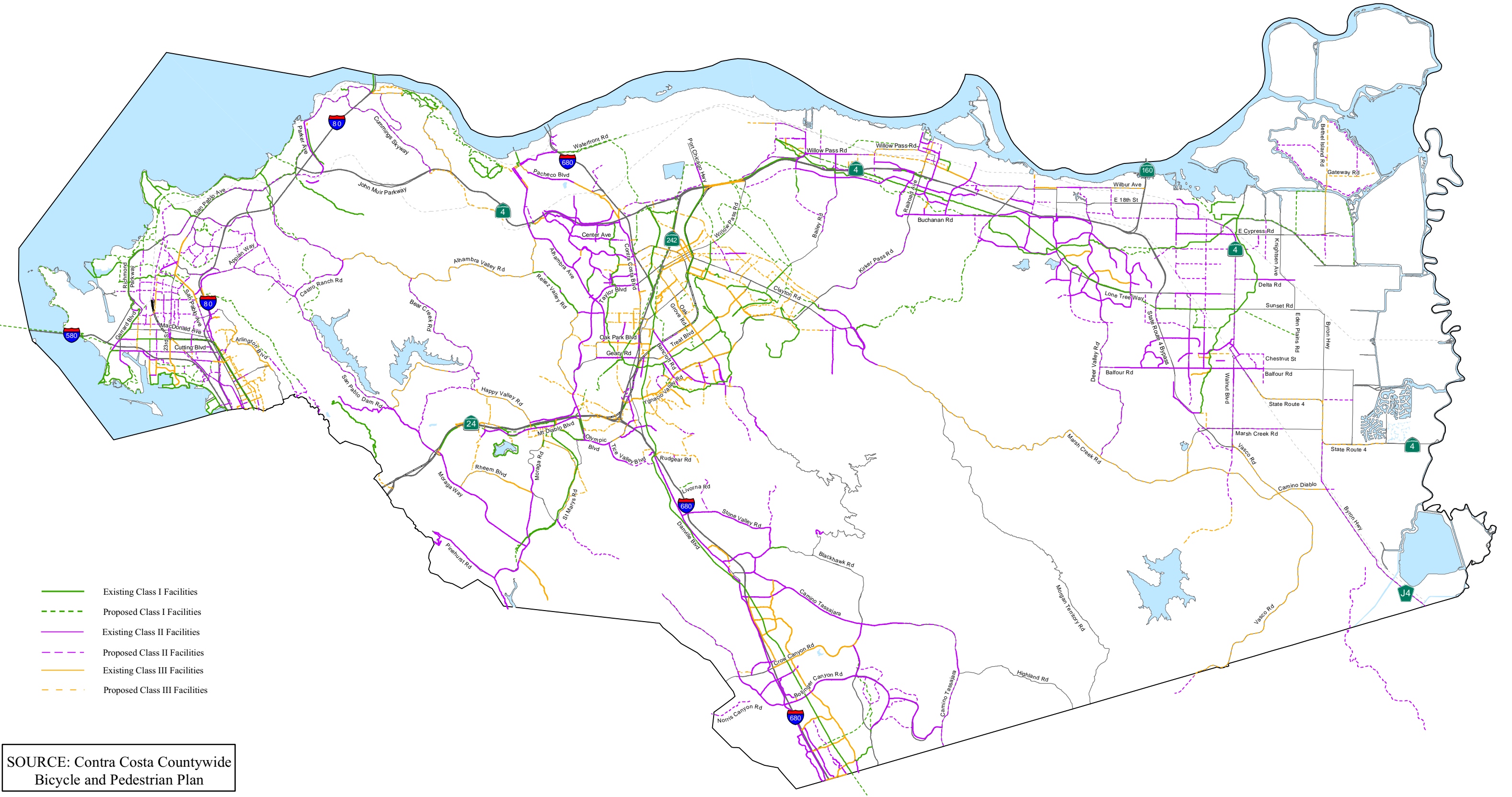
David J. Twa, County Administrator and Clerk of the Board of Supervisors

Contact: John Cunningham (925) 674-7833

10-09-17 TWIC Mtg - Agenda Packet Pg82 of 273

Don Stacey, M. David, Danuta

Bicycle Facilities Network

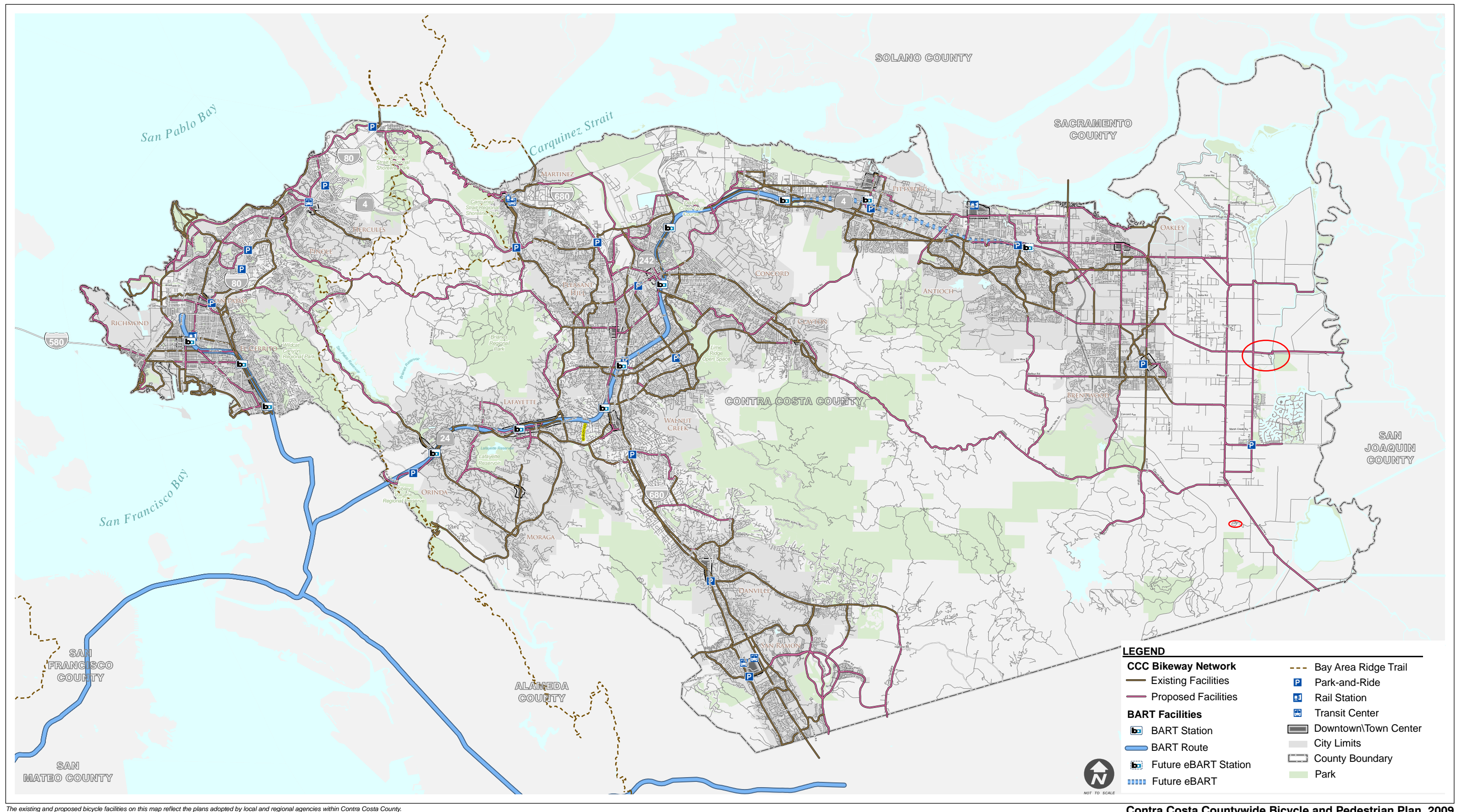


- Freeways & Highways
- Major Roads
- BART
- Railroads

CONTRA COSTA COUNTY

Map Created on June 22nd, 2010
Contra Costa County Department of Conservation & Development
651 Pine Street, 4th Floor - N. Wing, Martinez, CA 94553-0095
37:59:48.455N 122:06:35.384W





The existing and proposed bicycle facilities on this map reflect the plans adopted by local and regional agencies within Contra Costa County.

Contra Costa Countywide Bicycle and Pedestrian Plan, 2009

Figure 1: Countywide Bikeway Network

EAST BAY REGIONAL PARK DISTRICT

RESOLUTION NO.: 2016 - 06 - 160

June 21, 2016

RESOLUTION TO SUPPORT CONTRA COSTA COUNTY'S LEADERSHIP ON THE
CONCEPT OF A MARSH CREEK CORRIDOR MULTI-USE TRAIL

WHEREAS, Marsh Creek Road is a major thoroughfare which connects Central Contra Costa County and East Contra Costa County; and

WHEREAS, a significant number of bicycle trips take place on Marsh Creek Road despite the narrow and serpentine character of the corridor; and

WHEREAS, a separate, multi-use trail would create a new non-motorized east-west thoroughfare for expanded and safer commuting and recreational opportunities; and

WHEREAS, construction of the trail could be performed in conjunction with restoration of Marsh Creek, as anticipated in the East Contra Costa County Habitat Conservation Plan / Natural Community Conservation Plan; and

WHEREAS, the trail would connect Big Break Regional Shoreline to Round Valley Regional Preserve; and

WHEREAS, although the District currently has no funding committed to this project, support of the concept is consistent with previous Green Transportation efforts.

NOW, THEREFORE, BE IT RESOLVED the Board of Directors of the East Bay Regional Park District hereby support Contra Costa County's leadership on the concept of a Marsh Creek corridor multi-use trail; and

BE IT FURTHER RESOLVED, the General Manager is hereby authorized and directed, on behalf of the District and in its name, to execute and deliver such documents, and to do such acts as may be deemed necessary or appropriate to accomplish the intentions of this resolution.

Moved by Director Burgis, seconded by Director Wieskamp, and adopted this 21st day of June, 2016 by the following vote:

FOR: Diane Burgis, Whitney Dotson, Beverly Lane, Doug Siden, John Sutter,
Dennis Waespi, Ayn Wieskamp.
AGAINST: None.
ABSTAIN: None.
ABSENT: None.


Doug Siden, Board President

CERTIFICATION

I, Yolande Barial Knight, Clerk of the Board of Directors of the East Bay Regional Park District, do hereby certify that the above and foregoing is a full, true and correct copy of Resolution No. 2016-06-160 adopted by the Board of Directors at a regular meeting held on June 21, 2016.





Board of Directors

Scott Hein, *President*
Burt Bassler, *Treasurer*
Amara Morrison, *Secretary*
Heath Bartosh
Joe Canciamilla
John Gallagher
Liz Harvey
Claudia Hein
Bob Marx
Sue Ohanian
Malcolm Sproul
Jeff Stone

Staff

Ted Clement
Executive Director
Seth Adams
Land Conservation Director
Monica Oei
Finance Director
Meredith Hendricks
Land Programs Director
Deborah Toll White
Development Director
Karen Ferriere
Assistant Development Director
Caleb Castle
Communications Manager
Juan Pablo Galvan
Land Use Manager
Dana Halpin
General Office Manager
George Phillips
Land Conservation Manager
Jim Cartan
Stewardship & Outreach Coordinator
Hidemi Crosse
Bookkeeper
Shannon Grover
Development Associate
Kristen Noe
Development Associate

October 3, 2016

John Kopchik, Director
Department of Conservation and Development
Contra Costa County
30 Muir Road
Martinez, CA 94553

Dear John:

Save Mount Diablo supports the development of the Marsh Creek Corridor Multi-Use Trail as a tool for protecting land that provides important habitat and for improving connectivity to open space. The completed trail will not only provide a safe non-motorized route between Clayton and Brentwood for bicyclists, pedestrians and equestrians – it will give local residents and tourists alike more ready access to the 110,000 acres of open space contiguous to Marsh Creek that is managed by the East Bay Regional Park District, Contra Costa Water District, State Parks, and other organizations including Save Mount Diablo. Additional potential trail connections through Concord and Oakley give this regional trail project the potential to be an extremely significant public benefit.

As a local, nonprofit land conservation organization, Save Mount Diablo works to preserve, defend and restore land on and around the mountain for all to enjoy. We believe our role in the project is to ensure natural resource protection is a central value of the design principals, habitat is protected during the planning and construction of the trail, and to help optimize the trail's eventual use through thoughtful design.

It is our hope that construction of the trail will be performed in conjunction with restoration of Marsh Creek, as anticipated in the East Contra Costa County Habitat Conservation Plan/Natural Community Conservation Plan, and be constructed in a manner that reflects the scenic and natural resources of the area.

Save Mount Diablo looks forward to further participation in the planning process and hopes you will call upon us for information and assistance as the need arises.

Best regards,

Meredith Hendricks
Director of Land Programs



RESOLUTION OF THE EAST CONTRA COSTA COUNTY HABITAT CONSERVANCY
SUPPORTING THE CONCEPT OF A MARSH CREEK CORRIDOR MULTI-USE TRAIL
THAT CONNECTS THE DELTA TO MOUNT DIABLO AND NEIGHBORING
COMMUNITIES

WHEREAS, Marsh Creek Road is a major thoroughfare that connects Central Contra Costa County and East Contra Costa County and is the gateway to 110,000 acres of open space and recreational areas managed by the East Bay Regional Park District, Contra Costa Water District, State Parks and other local jurisdictions; and

WHEREAS, a significant number of bicycle trips take place on Marsh Creek Road, in spite of the lack of a bicycle path or a dedicated lane; and

WHEREAS, Marsh Creek Road within Clayton has an existing Class II bicycle lane, which connects to Clayton's extensive trail network into Concord and Mount Diablo State Park; and

WHEREAS, in East Contra Costa County, the Marsh Creek Trail currently runs from the Big Break Regional Shoreline in Oakley to the southern city limits of the City of Brentwood, leaving a gap between that terminus and trails in the City of Clayton; and

WHEREAS, the completed multi-use trail would create a new major non-motorized east-west thoroughfare for expanded commuting or recreational opportunities, would provide non-motorized access to Downtown Clayton, Diablo View Middle School, Mount Diablo State Park, Round Valley Regional Preserve, and the Marsh Creek Trail through Brentwood and Oakley; and

WHEREAS, once this trail and adjacent trails are completed, there will be one continuous non-motorized route from Central Contra Costa County to the Delta; and

WHEREAS, construction of the trail could be performed in conjunction with restoration of Marsh Creek, as anticipated in the East Contra Costa County HCP/NCCP, and be constructed in a sensitive manner that reflects the scenic and natural resources of the area.

NOW, THEREFORE, BE IT RESOLVED that the East Contra Costa County Habitat Conservancy will advocate for support and funding for the Marsh Creek Corridor Multi-Use Trail, including study and potential implementation, in local, state, and federal transportation, recreation, park and open space funding efforts.

Approved by the following vote on August 24, 2015.

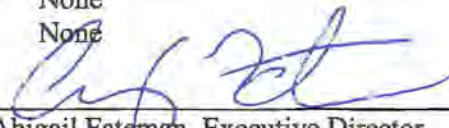
Ayes: Bryant, Evola, Haydon, Piepho and Pope

Noes: None

Abstain: None

Absent: None

Attest:


Abigail Fateman, Executive Director

RESOLUTION OF THE EAST CONTRA COSTA COUNTY HABITAT CONSERVANCY
SUPPORTING THE CONCEPT OF A MARSH CREEK CORRIDOR MULTI-USE TRAIL
THAT CONNECTS THE DELTA TO MOUNT DIABLO AND NEIGHBORING
COMMUNITIES

WHEREAS, Marsh Creek Road is a major thoroughfare that connects Central Contra Costa County and East Contra Costa County and is the gateway to 110,000 acres of open space and recreational areas managed by the East Bay Regional Park District, Contra Costa Water District, State Parks and other local jurisdictions; and

WHEREAS, a significant number of bicycle trips take place on Marsh Creek Road, in spite of the lack of a bicycle path or a dedicated lane; and

WHEREAS, Marsh Creek Road within Clayton has an existing Class II bicycle lane, which connects to Clayton's extensive trail network into Concord and Mount Diablo State Park; and

WHEREAS, in East Contra Costa County, the Marsh Creek Trail currently runs from the Big Break Regional Shoreline in Oakley to the southern city limits of the City of Brentwood, leaving a gap between that terminus and trails in the City of Clayton; and

WHEREAS, the completed multi-use trail would create a new major non-motorized east-west thoroughfare for expanded commuting or recreational opportunities, would provide non-motorized access to Downtown Clayton, Diablo View Middle School, Mount Diablo State Park, Round Valley Regional Preserve, and the Marsh Creek Trail through Brentwood and Oakley; and

WHEREAS, once this trail and adjacent trails are completed, there will be one continuous non-motorized route from Central Contra Costa County to the Delta; and

WHEREAS, construction of the trail could be performed in conjunction with restoration of Marsh Creek, as anticipated in the East Contra Costa County HCP/NCCP, and be constructed in a sensitive manner that reflects the scenic and natural resources of the area.

NOW, THEREFORE, BE IT RESOLVED that the East Contra Costa County Habitat Conservancy will advocate for support and funding for the Marsh Creek Corridor Multi-Use Trail, including study and potential implementation, in local, state, and federal transportation, recreation, park and open space funding efforts.

Approved by the following vote on August 24, 2015.

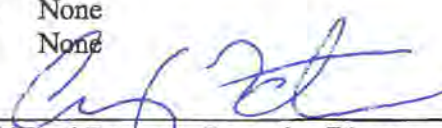
Ayes: Bryant, Evola, Haydon, Piepho and Pope

Noes: None

Abstain: None

Absent: None

Attest:


Abigail Fateman, Executive Director