

Appendix B

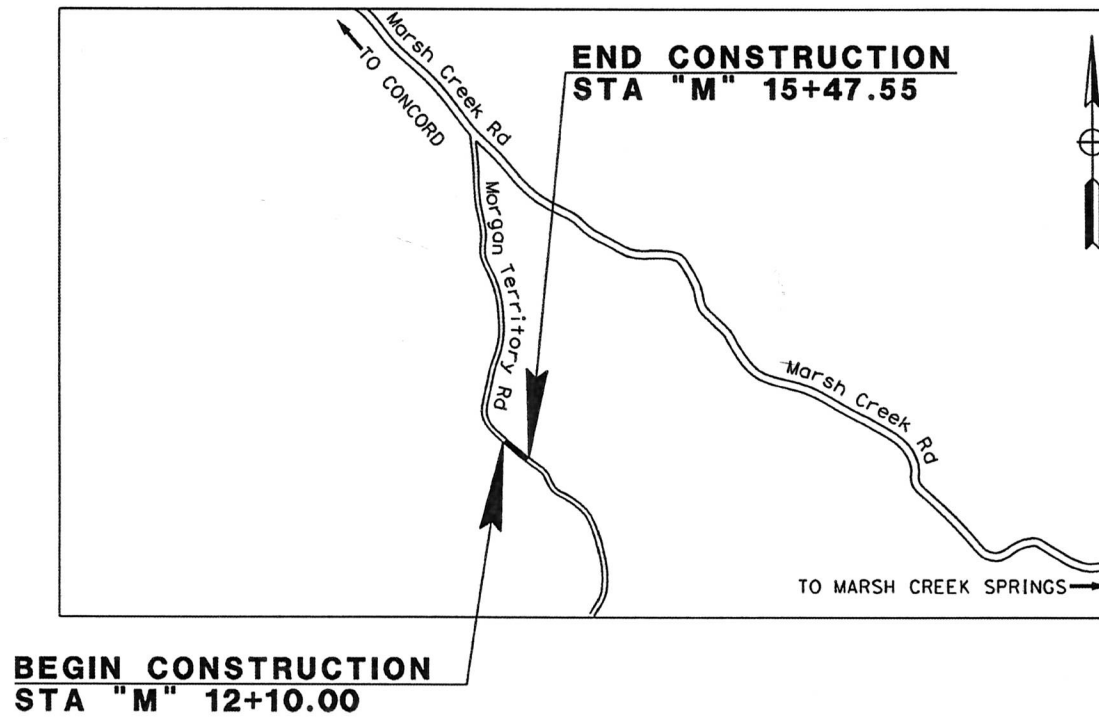
Local Streets and Roads Overall Project Map



Note: See following pages for detailed map of each project.

CONTRA COSTA COUNTY
PUBLIC WORKS DEPARTMENT
MORGAN TERRITORY
ROAD SLIDE REPAIR
COUNTY PROJECT No. 0672-6U6203

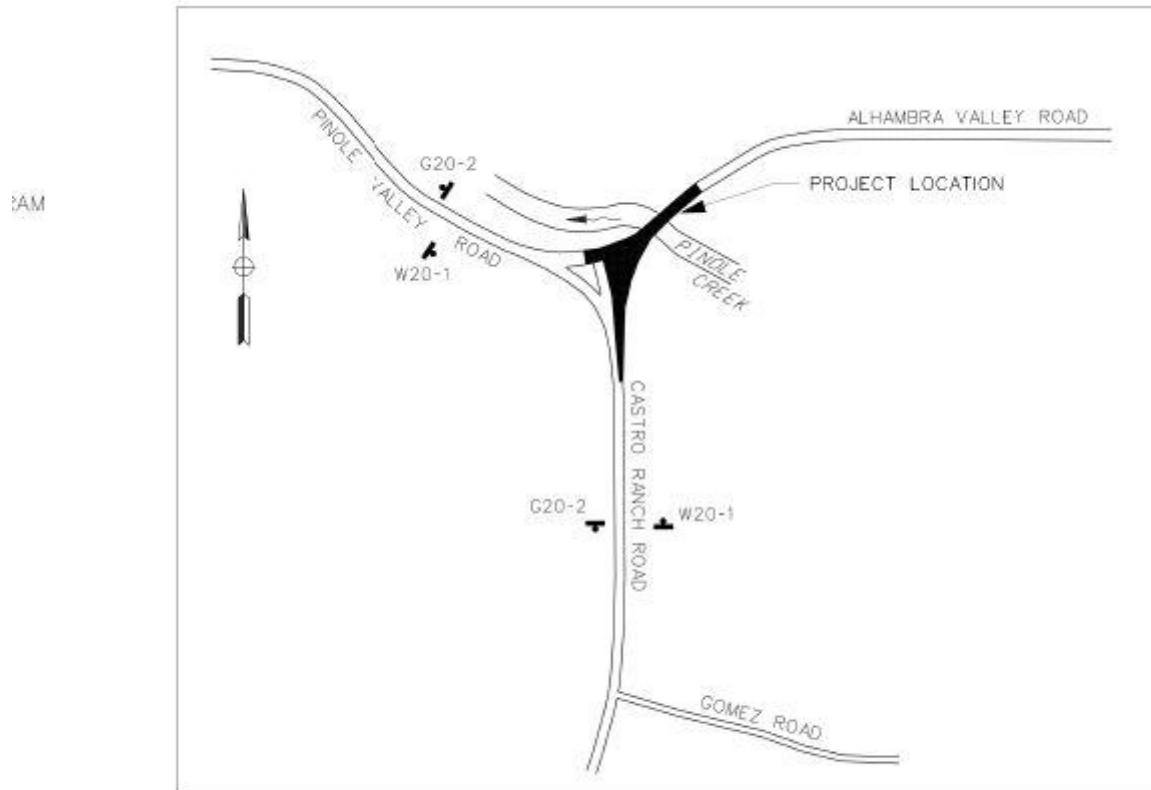
FEDERAL PROJECT NO. PENDING
TO BE SUPPLEMENTED BY CALTRANS STANDARD PLANS DATED 2015
AND COUNTY STANDARD PLANS DATED MARCH 2014



VICINITY MAP

NO SCALE

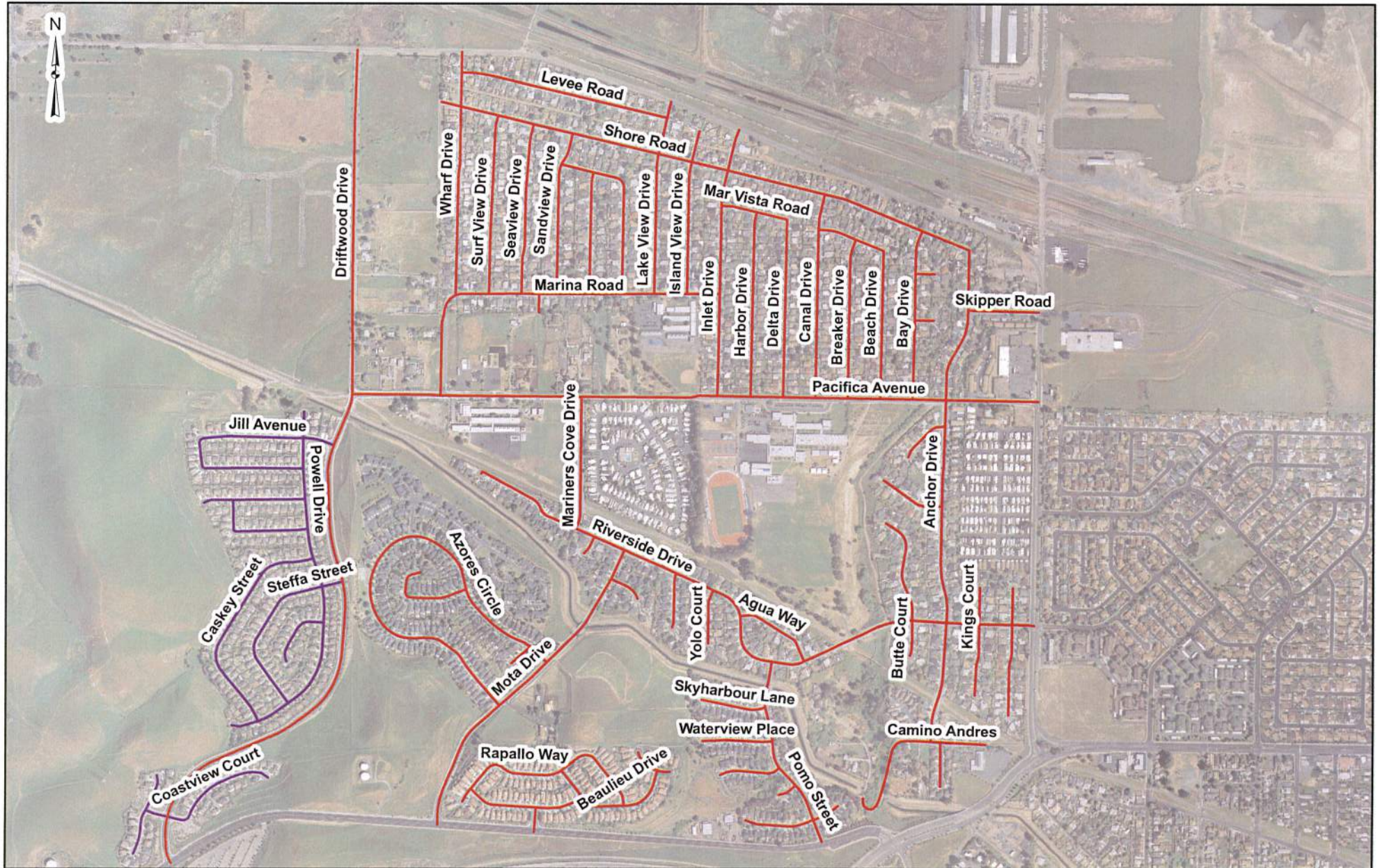
CONTRA COSTA COUNTY
PUBLIC WORKS DEPARTMENT
ALHAMBRA VALLEY ROAD WASHOUT REPAIR
COUNTY PROJECT NO. 0672-6U6201
FEDERAL PROJECT NO. PR ER-32LO ()
TO BE SUPPLEMENTED BY STATE STANDARD PLANS
DATED MAY 2015 AND COUNTY STANDARD PLANS DATED MARCH 2014



VICINITY MAP AND CONSTRUCTION SIGNING MAP

NO SCALE

**2015 Surface Seal Program
Bay Point Area
Road To Receive Asphalt Rubber Cape Seal & Slurry Seal**

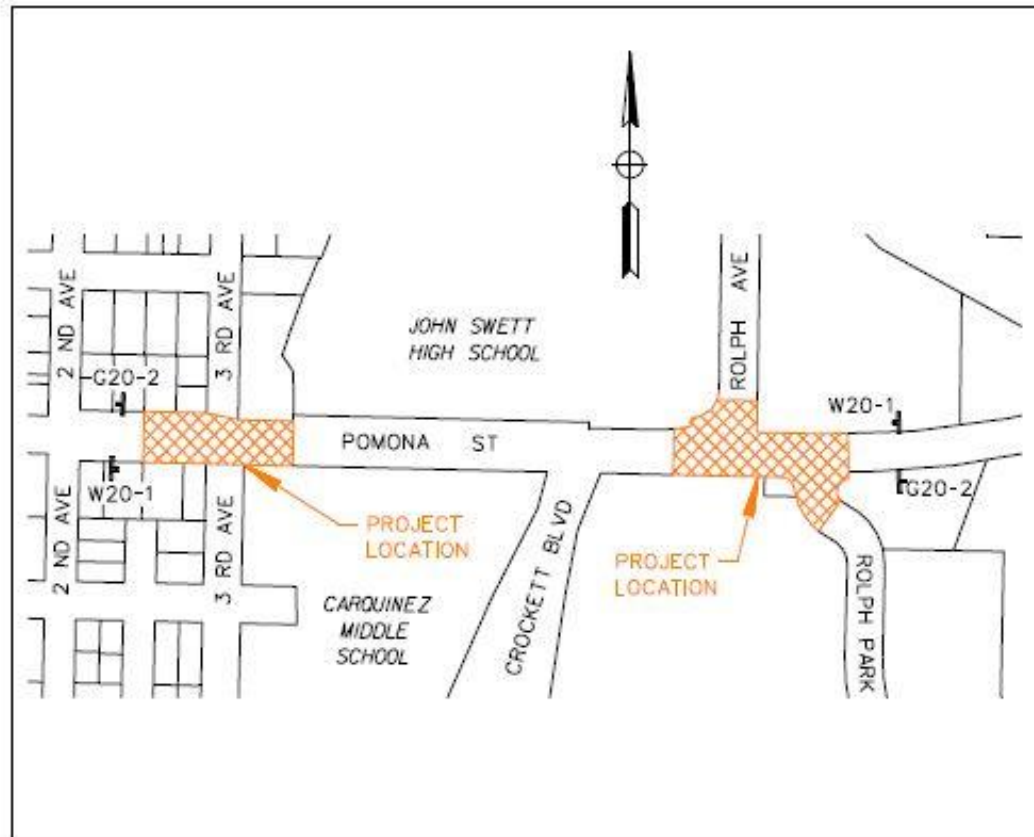


- : Bay Point roads to receive a slurry seal.
- : Bay Point roads to receive an asphalt rubber cape seal.

CONTRA COSTA COUNTY
PUBLIC WORKS DEPARTMENT
**POMONA STREET PEDESTRIAN SAFETY
IMPROVEMENTS - PHASE II**

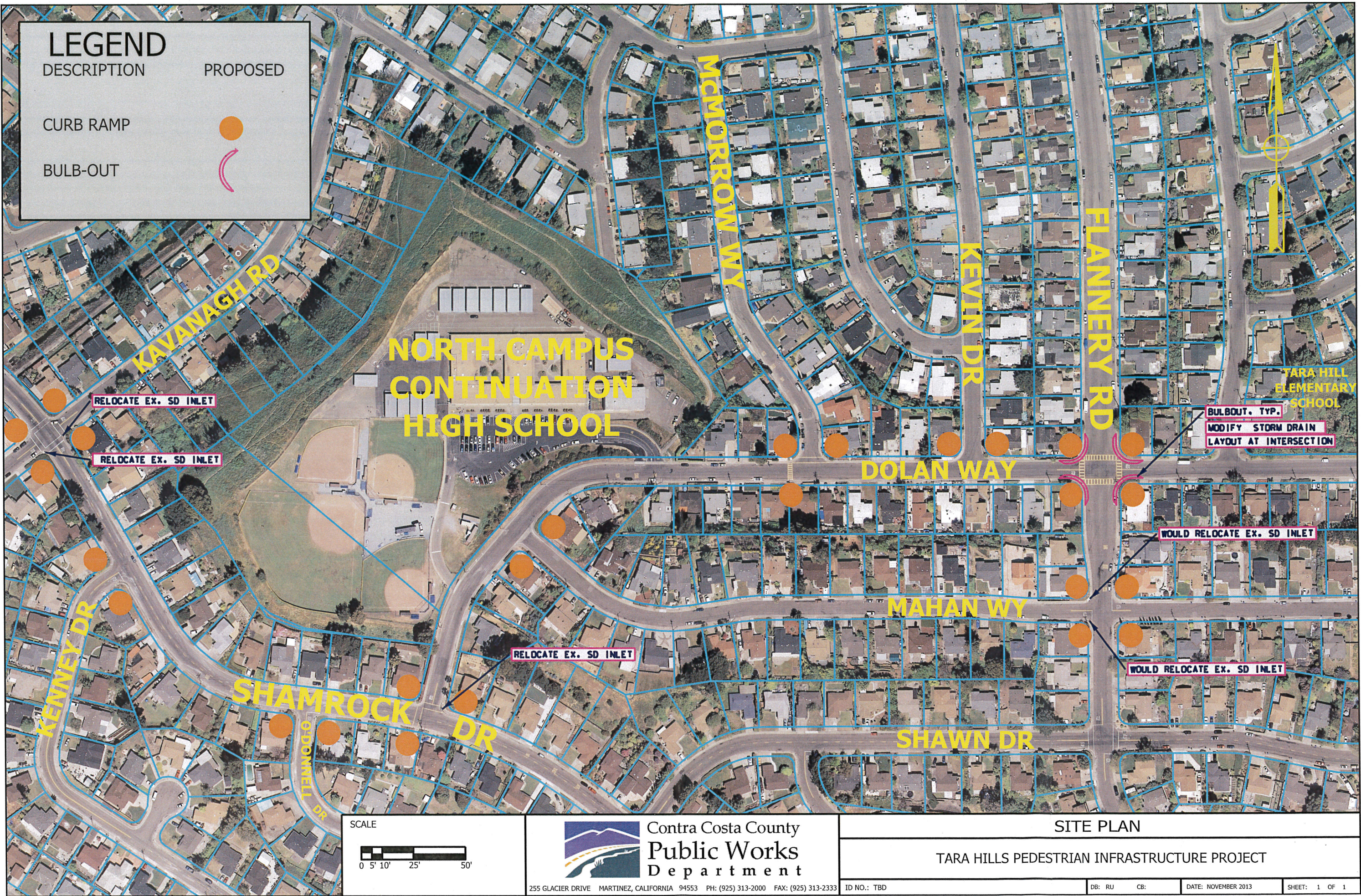
COUNTY PROJECT NO. 0662-6U4090

TO BE SUPPLEMENTED BY STATE STANDARD PLANS
DATED 2015 AND THE LATEST COUNTY STANDARD PLANS



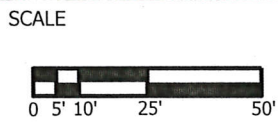
VICINITY AND CONSTRUCTION SIGNING MAP

NO SCALE



LEGEND

DESCRIPTION	PROPOSED
CURB RAMP	
BULB-OUT	



Contra Costa County
Public Works
Department

255 GLACIER DRIVE MARTINEZ, CALIFORNIA 94553 PH: (925) 313-2000 FAX: (925) 313-2333

ID NO.: TBD

SITE PLAN

TARA HILLS PEDESTRIAN INFRASTRUCTURE PROJECT

DB: RU

CB:

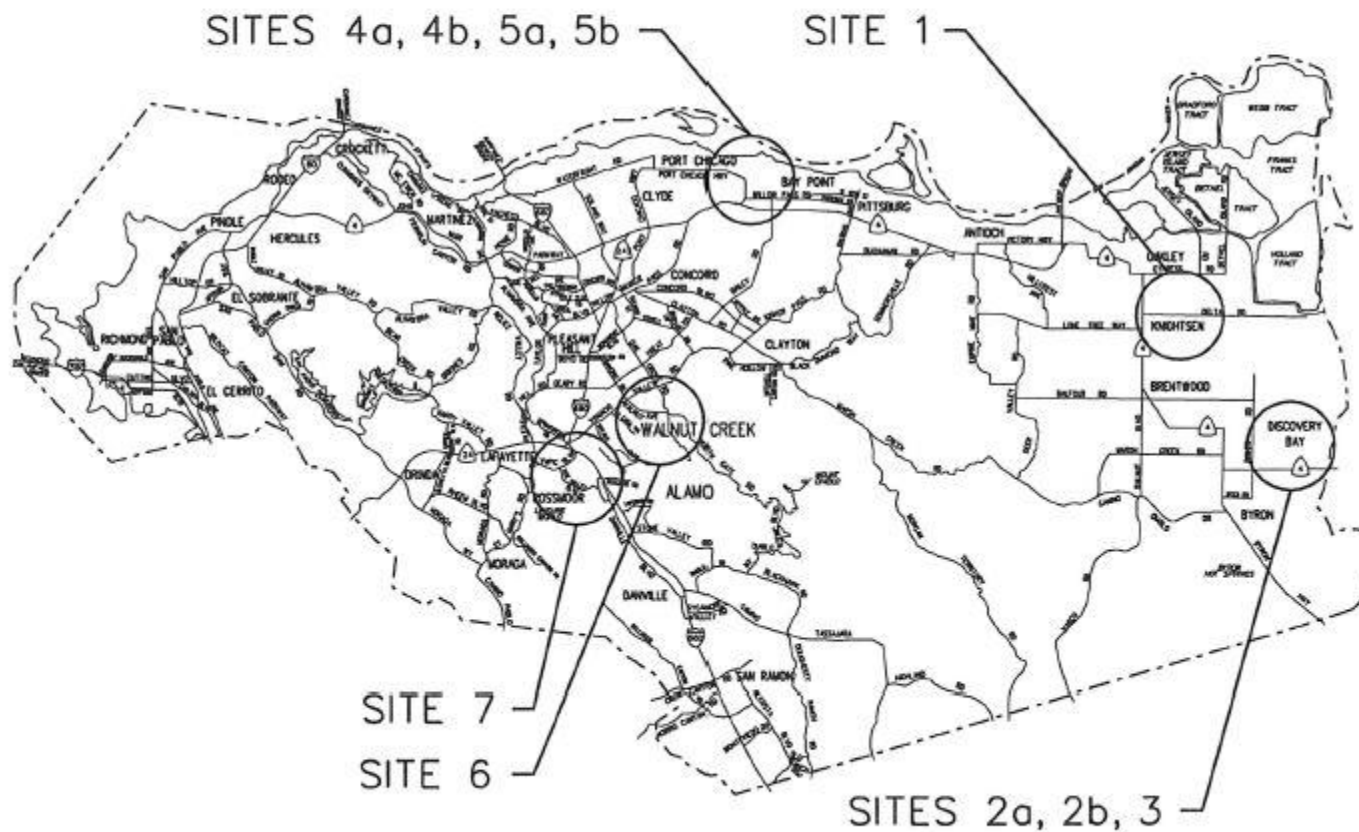
DATE: NOVEMBER 2013

SHEET: 1 OF 1

CONTRA COSTA COUNTY
PUBLIC WORKS DEPARTMENT
PEDESTRIAN CROSSING ENHANCEMENTS
CENTRAL AND EAST COUNTY

PROJECT NO. 0662-6R4112

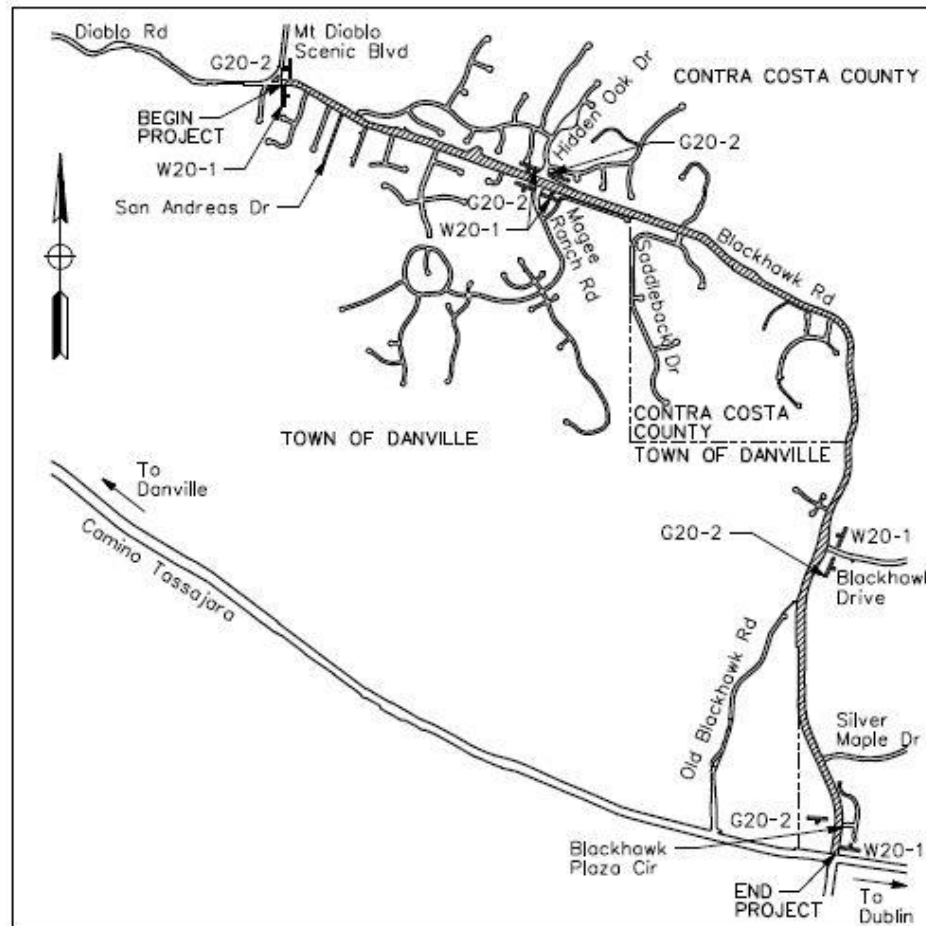
TO BE SUPPLEMENTED BY THE 2015 STATE STANDARD PLANS AND THE LATEST COUNTY STANDARD PLANS
THE CONTRACTOR SHALL POSSESS THE CLASS (OR CLASSES) OF LICENSE
AS SPECIFIED IN THE "NOTICE TO BIDDERS"



LOCATION MAP
NOT TO SCALE

CONTRA COSTA COUNTY
PUBLIC WORKS DEPARTMENT
BLACKHAWK ROAD BIKEWAY PROJECT
COUNTY PROJECT NO. 0662-6R4018

TO BE SUPPLEMENTED BY STATE STANDARD PLANS
DATED 2015 AND THE LATEST COUNTY STANDARD PLANS



VICINITY AND CONSTRUCTION SIGNING MAP

NO SCALE