

# **APPENDIX 2**

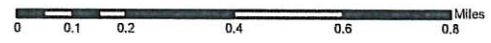




**Contra Costa County  
Direct Discharge Focal Points  
Community of  
Bay Point**

**Direct Discharge Focal Points**

- Creeks Within Maintained Road Right-of-Way
- County and FCD Properties / ROW Adjacent to / Within Creeks



**Reference Layers**

- Above Ground Creek
- Under Ground Creek
- Outside Urban Limit
- City Limits



**Source:**

Creeks Within Maintained Road Right-of-Way: Creeks are defined as having a 'U\_GROUND' value of 'no' in the DCD Creeks layer 'HYD\_CDD\_CreeksDrainages'. County Maintained Roads are defined as having a 'REMFLAG' value of '0' in the PWD layer 'TRA\_PWD\_MainRds'. County Maintained Roads were buffered 30' on either side to approximate Right-of-Way. The layer is the result of the intersection of this buffered county maintained roads layer with the Creeks layer. The resulting creek segments were buffered 100' for display purposes.

County and FCD Properties / ROW Adjacent to / Within Creeks: County owned parcels are defined by the assessor as parcels within the GIS Parcel Dataset having a 'Tax Code' value of 'CO'. Creeks are defined as having a 'U\_GROUND' value of 'no' in the DCD Creeks layer 'HYD\_CDD\_CreeksDrainages'. The layer is the result of selecting County owned parcels within 10 feet of Creeks. The layer also includes all polygons within the 'HYD\_PWD\_FC\_ROW' layer including 'Easements Granted to Others', 'Easements Returned to FCD', 'FCD Easement', 'FCD Fee Title', 'Fee Title Transfer From FCD', 'Other', and 'Unknown' Within 10 feet of a Creek.

Ortho: 2014





**Contra Costa County  
Direct Discharge Focal Points  
Community of  
El Sobrante**

**Direct Discharge Focal Points**

- Creeks Within Maintained Road Right-of-Way
- County and FCD Properties / ROW Adjacent to / Within Creeks

0 0.075 0.15 0.3 0.45 0.6 Miles

**Reference Layers**

- Above Ground Creek
- Under Ground Creek
- Outside Urban Limit
- City Limits



**Source:**

Creeks Within Maintained Road Right-of-Way: Creeks are defined as having an 'U\_GROUND' value of 'no' in the DCD Creeks layer 'HYD\_CDD\_CreeksDrainages'. County Maintained Roads are defined as having a 'REMLAG' value of '0' in the PWD layer 'TRA\_PWD\_MainRd'. County Maintained Roads were buffered 30' on either side to approximate Right-of-Way. The layer is the result of the intersection of this buffered county maintained roads layer with the Creeks layer. The resulting creek segments were buffered 100' for display purposes.

County and FCD Properties / ROW Adjacent to / Within Creeks: County owned parcels are defined by the assessor as parcels within the GIS Parcel Dataset having a 'Tax Code' value of 'CO'. Creeks are defined as having an 'U\_GROUND' value of 'no' in the DCD Creeks layer 'HYD\_CDD\_CreeksDrainages'. The layer is the result of selecting County owned parcels within 10 feet of Creeks. The layer also includes all polygons within the 'HYD\_PWD\_FC\_ROW' layer including Easements Granted to Others, Easements Returned to FCD, FCD Easement, FCD Fee Title, Fee Title Transfer From FCD, Other, and Unknown Within 10 feet of a Creek.

Ortho: 2014

Contra Costa County  
Public Works Department  
IT Division  
January 31, 2017

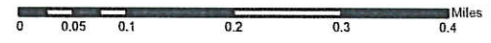




**Contra Costa County**  
**Direct Discharge Focal Points**  
**Community of**  
**North Richmond**

**Direct Discharge Focal Points**

- Creeks Within Maintained Road Right-of-Way
- County and FCD Properties / ROW Adjacent to / Within Creeks



**Reference Layers**

- Above Ground Creek
- Under Ground Creek
- Outside Urban Limit
- City Limits



**Source:**

Creeks Within Maintained Road Right-of-Way: Creeks are defined as having an 'U\_GROUND' value of 'no' in the DCD Creeks layer 'HYD\_CDD\_CreeksDrainages'. County Maintained Roads are defined as having a 'REMFLAG' value of '0' in the PWD layer 'TRA\_PWD\_MaintRds'. County Maintained Roads were buffered 30' on either side to approximate Right-of-Way. The layer is the result of the intersection of this buffered county maintained roads layer with the Creeks layer. The resulting creek segments were buffered 100' for display purposes.

County and FCD Properties / ROW Adjacent to / Within Creeks: County owned parcels are defined by the assessor as parcels within the GIS Parcel Dataset having a 'Tax Code' value of 'CO'. Creeks are defined as having an 'U\_GROUND' value of 'no' in the DCD Creeks layer 'HYD\_CDD\_CreeksDrainages'. The layer is the result of selecting County owned parcels within 10 feet of Creeks. The layer also includes all polygons within the 'HYD\_PWD\_FC\_ROW' layer including 'Easements Granted to Others', 'Easements Returned to FCD', 'FCD Easement', 'FCD Fee Title', 'Fee Title Transfer From FCD', 'Other', and 'Unknown' Within 10 feet of a Creek.

Ortho: 2014





**Contra Costa County**  
**Direct Discharge Focal Points**  
**Community of**  
**Pacheco**

**Direct Discharge Focal Points**

- Creeks Within Maintained Road Right-of-Way
- County and FCD Properties / ROW Adjacent to / Within Creeks



**Reference Layers**

- Above Ground Creek
- Under Ground Creek
- Outside Urban Limit
- City Limits



**Source:**

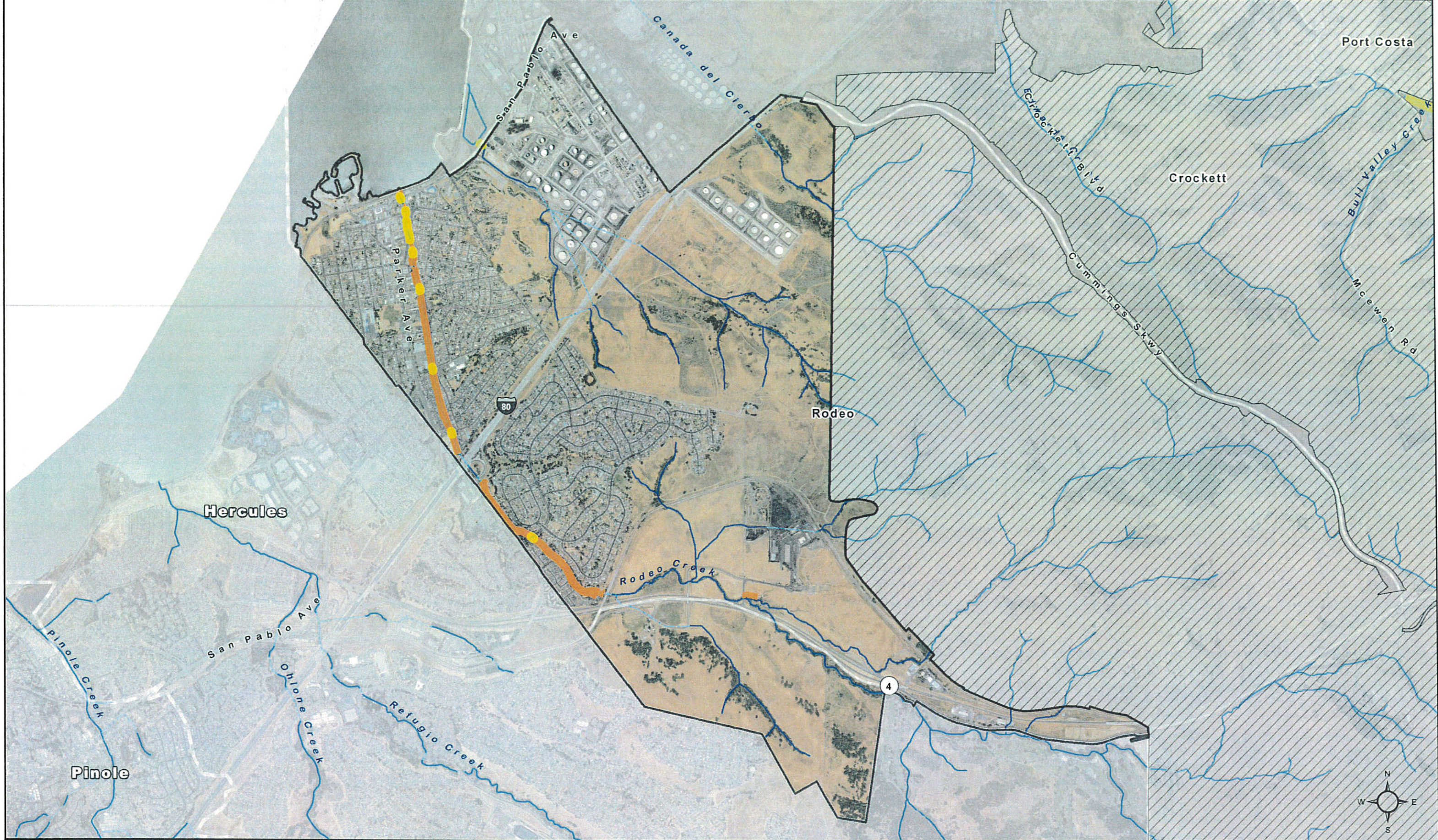
Creeks Within Maintained Road Right-of-Way: Creeks are defined as having an 'U\_GROUND' value of 'no' in the DCD Creeks layer 'HYD\_CDD\_CreeksDrainages'. County Maintained Roads are defined as having a 'REINFLAG' value of '0' in the PWD layer 'TRA\_PWD\_MainRd'. County Maintained Roads were buffered 30' on either side to approximate Right-of-Way. The layer is the result of the intersection of this buffered county maintained roads layer with the Creeks layer. The resulting creek segments were buffered 100' for display purposes.

County and FCD Properties / ROW Adjacent to / Within Creeks: County owned parcels are defined by the assessor as parcels within the GIS Parcel Dataset having a 'Tax Code' value of 'CO'. Creeks are defined as having an 'U\_GROUND' value of 'no' in the DCD Creeks layer 'HYD\_CDD\_CreeksDrainages'. The layer is the result of selecting County owned parcels within 10 feet of Creeks. The layer also includes all polygons within the 'HYD\_PWD\_FC\_ROW' layer including 'Easements Granted to Others', 'Easements Returned to FCD', 'FCD Easement', 'FCD Fee Title', 'Fee Title Transfer From FCD', 'Other', and 'Unknown' Within 10 feet of a Creek.

Ortho: 2014


Contra Costa County  
Public Works Department  
IT Division  
January 31, 2017









**Contra Costa County  
Direct Discharge Focal Points  
Community of  
Rodeo**

**Direct Discharge Focal Points**

-  Creeks Within Maintained Road Right-of-Way
-  County and FCD Properties / ROW Adjacent to / Within Creeks



**Reference Layers**

-  Above Ground Creek
-  Under Ground Creek
-  Outside Urban Limit
-  City Limits



**Source:**

Creeks Within Maintained Road Right-of-Way: Creeks are defined as having an 'U\_GROUND' value of 'no' in the DCD Creeks layer 'HYD\_CDD\_CreeksDrainages'. County Maintained Roads are defined as having a 'REMFLAG' value of '0' in the PWD layer 'TRA\_PWD\_MainRds'. County Maintained Roads were buffered 30' on either side to approximate Right-of-Way. The layer is the result of the intersection of this buffered county maintained roads layer with the Creeks layer. The resulting creek segments were buffered 100' for display purposes.

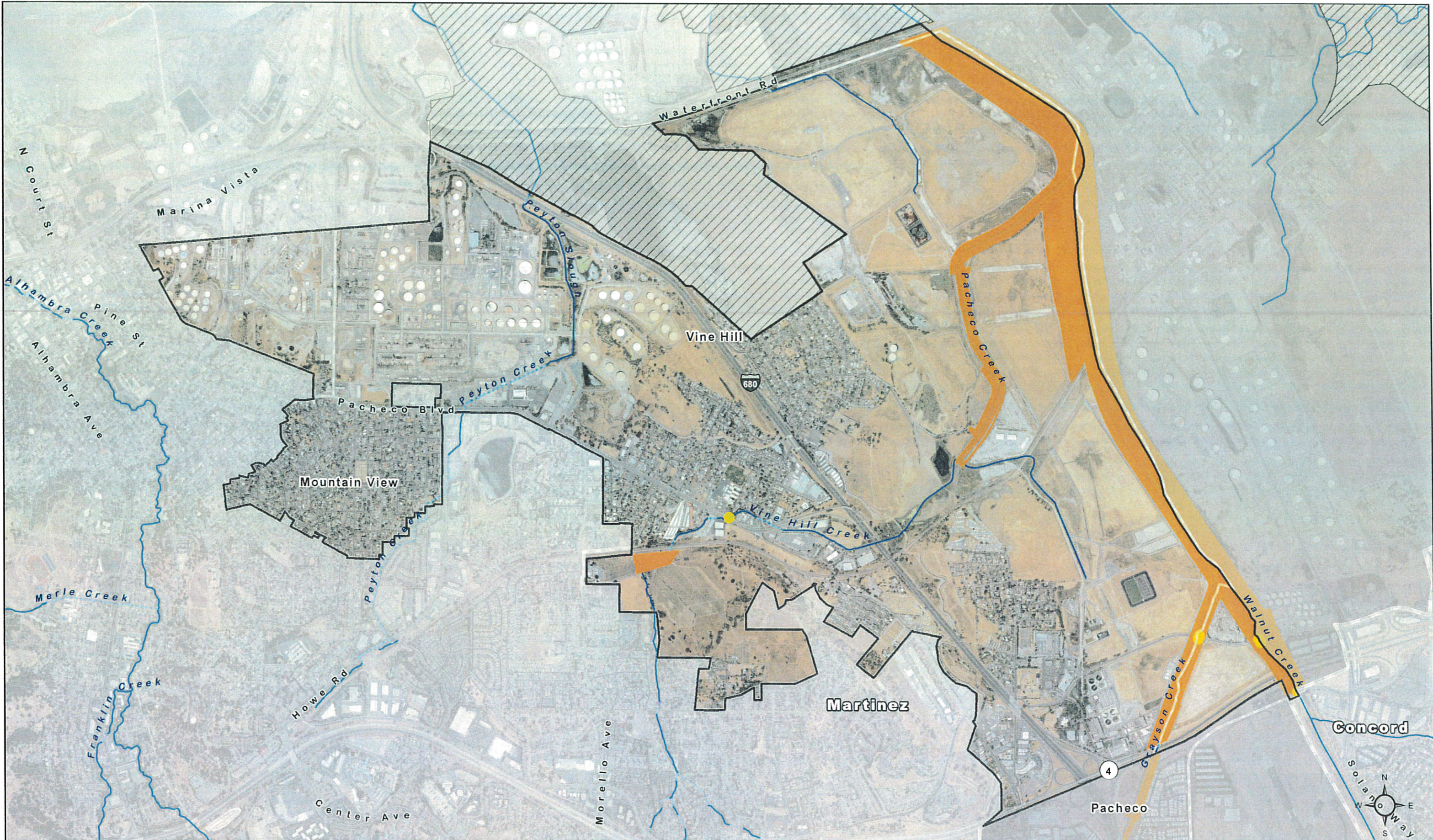
County and FCD Properties / ROW Adjacent to / Within Creeks: County owned parcels are defined by the assessor as parcels within the GIS Parcel Dataset having a 'Tax Code' value of 'CO'. Creeks are defined as having an 'U\_GROUND' value of 'no' in the DCD Creeks layer 'HYD\_CDD\_CreeksDrainages'. The layer is the result of selecting County owned parcels within 10 feet of Creeks. The layer also includes all polygons within the 'HYD\_PWD\_FC\_ROW' layer including 'Easements Granted to Others', 'Easements Returned to FCD', 'FCD Easement', 'FCD Fee Title', 'Fee Title Transfer From FCD', 'Other', and 'Unknown' Within 10 feet of a Creek.

Ortho: 2014





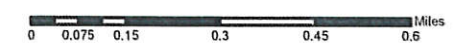




**Contra Costa County  
Direct Discharge Focal Points  
Unincorporated  
Martinez Neighborhoods**

**Direct Discharge Focal Points**

- Creeks Within Maintained Road Right-of-Way
- County and FCD Properties / ROW Adjacent to / Within Creeks



**Reference Layers**

- Above Ground Creek
- Under Ground Creek
- Outside Urban Limit
- City Limits



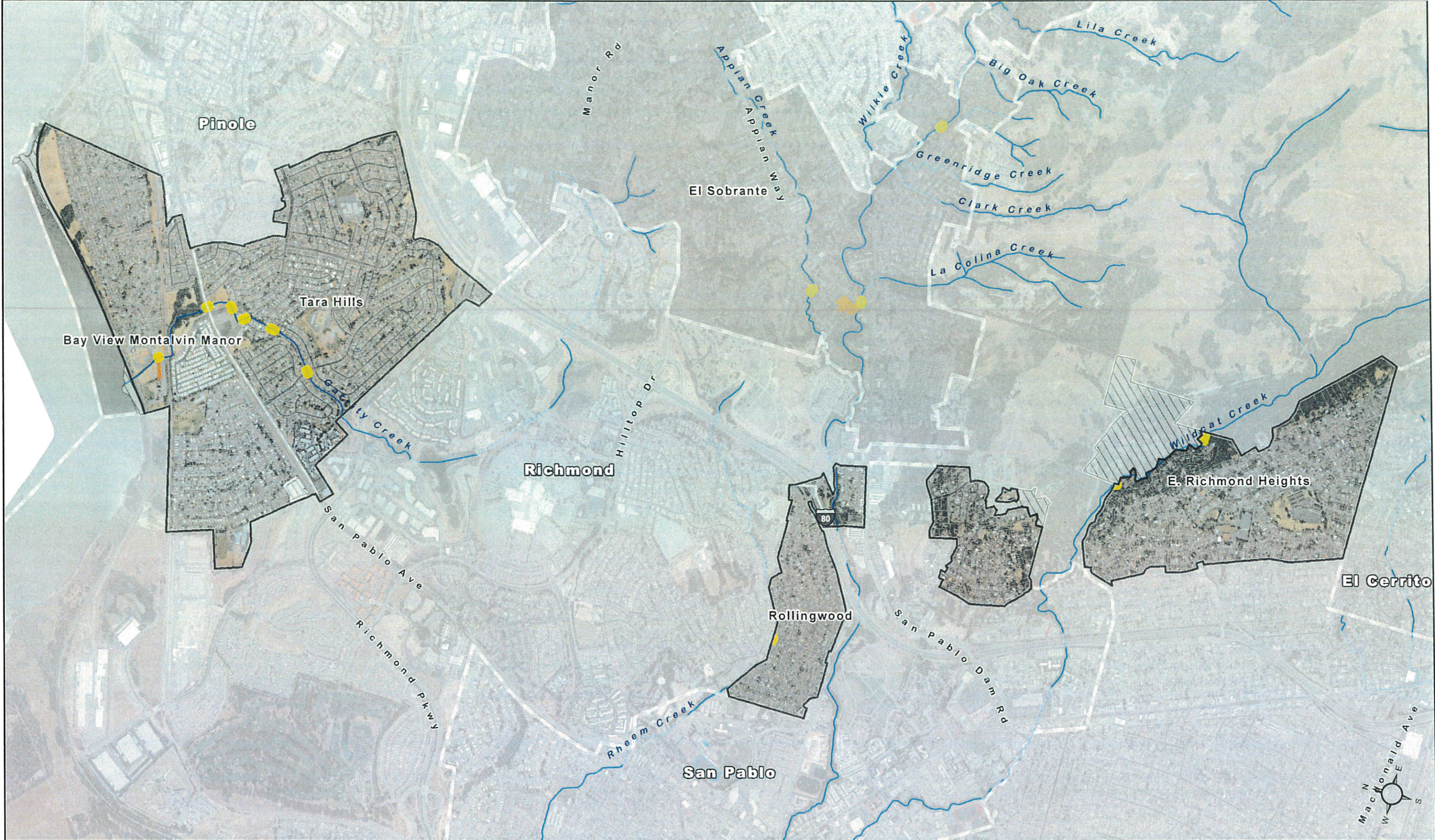
**Source:**

Creeks Within Maintained Road Right-of-Way: Creeks are defined as having an 'U\_GROUND' value of 'no' in the DCD Creeks layer 'HYD\_CDD\_CreeksDrainages'. County Maintained Roads are defined as having a 'REMLAG' value of '0' in the PWD layer 'TRA\_PWD\_MainRds'. County Maintained Roads were buffered 30' on either side to approximate Right-of-Way. The layer is the result of the intersection of this buffered county maintained roads layer with the Creeks layer. The resulting creek segments were buffered 100' for display purposes.

County and FCD Properties / ROW Adjacent to / Within Creeks: County owned parcels are defined by the assessor as parcels within the GIS Parcel Dataset having a 'Tax Code' value of 'CO'. Creeks are defined as having an 'U\_GROUND' value of 'no' in the DCD Creeks layer 'HYD\_CDD\_CreeksDrainages'. The layer is the result of selecting County owned parcels within 10 feet of Creeks. The layer also includes all polygons within the 'HYD\_PWD\_FC\_ROW' layer including 'Easements Granted to Others', 'Easements Returned to FCD', 'FCD Easement', 'FCD Fee Title', 'Fee Title Transfer From FCD', 'Other', and 'Unknown' Within 10 feet of a Creek.



Ortho: 2014









**Contra Costa County  
Direct Discharge Focal Points  
Unincorporated  
Richmond Neighborhoods**

**Direct Discharge Focal Points**

-  Creeks Within Maintained Road Right-of-Way
-  County and FCD Properties / ROW Adjacent to / Within Creeks

0 0.075 0.15 0.3 0.45 0.6 Miles

**Reference Layers**

-  Above Ground Creek
-  Under Ground Creek
-  Outside Urban Limit
-  City Limits



Source:

Creeks Within Maintained Road Right-of-Way: Creeks are defined as having an 'U\_GROUND' value of 'no' in the DCD Creeks layer 'HYD\_CDD\_CreeksDrainages'. County Maintained Roads are defined as having a 'REHFLAG' value of '0' in the PWD layer 'TRA\_PWD\_MainRds'. County Maintained Roads were buffered 30' on either side to approximate Right-of-Way. The layer is the result of the intersection of this buffered county maintained roads layer with the Creeks layer. The resulting creek segments were buffered 100' for display purposes.

County and FCD Properties / ROW Adjacent to / Within Creeks: County owned parcels are defined by the assessor as parcels within the GIS Parcel Dataset having a 'Tax Code' value of 'CO'. Creeks are defined as having an 'U\_GROUND' value of 'no' in the DCD Creeks layer 'HYD\_CDD\_CreeksDrainages'. The layer is the result of selecting County owned parcels within 10 feet of Creeks. The layer also includes all polygons within the 'HYD\_PWD\_FC\_ROW' layer including 'Easements Granted to Others', 'Easements Returned to FCD', 'FCD Easement', 'FCD Fee Title', 'Fee Title Transfer From FCD', 'Other', and 'Unknown' Within 10 feet of a Creek.

Ortho: 2014