



Finance Report

Community Service

Area EM-1 (Measure H)



Patricia Frost, EMS Director
Contra Costa Health Services
October 23, 2017

CSA-EM1 (Measure H)

...

Historical Background

Measure H Advisory

Passed November 8, 1988 with 71.6% voter support.

- “Shall a Countywide Emergency Medical Services benefit assessment be established to finance improvements in emergency medical and trauma care system including expanded countywide paramedic coverage; improved medical communications and medical dispatcher training; and medical equipment and supplies and training for firefighter first responders, including training and equipment for fire services electing to undertake a specialized program of advanced cardiac care(defibrillation)”

Can Measure H Be Increased?

- In 1996, Proposition 218 was passed amending the State constitution and making significant changes to local government financing.
- Proposition 218 eliminated all existing benefit assessments except, under a grandfather clause contained in the proposition, those that had been established by voter approval.
- The tax measure exists only under Proposition 218, grandfathering clause so long as the governing body had demonstrated adherence to all terms of the advisory measure.
- **CSA EM-1 funding cannot be increased**

How Is Measure H Used?

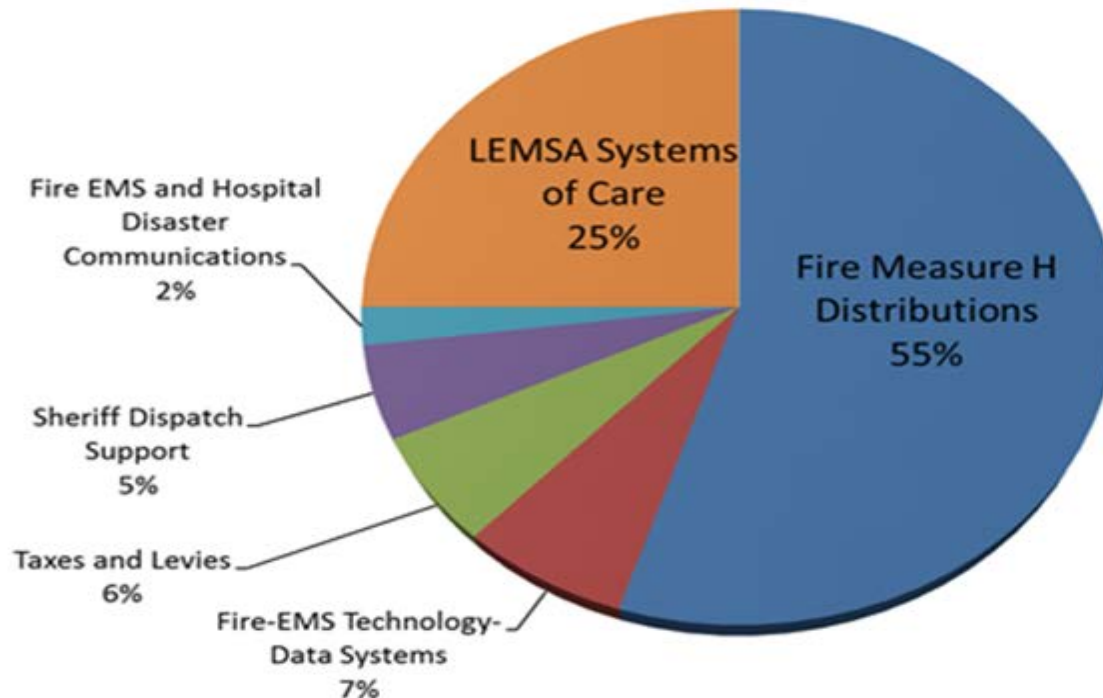
...

Current Allocations and Use

2016 Measure H

In 2016, Measure H assessments raised 4.7 million dollars providing approximately 4.5 million dollars for EMS system enhancements after taxes and levies (6%) are deducted.

Contra Costa EMS System Enhancement Measure H 2016 \$ 4,791,838



Measure H

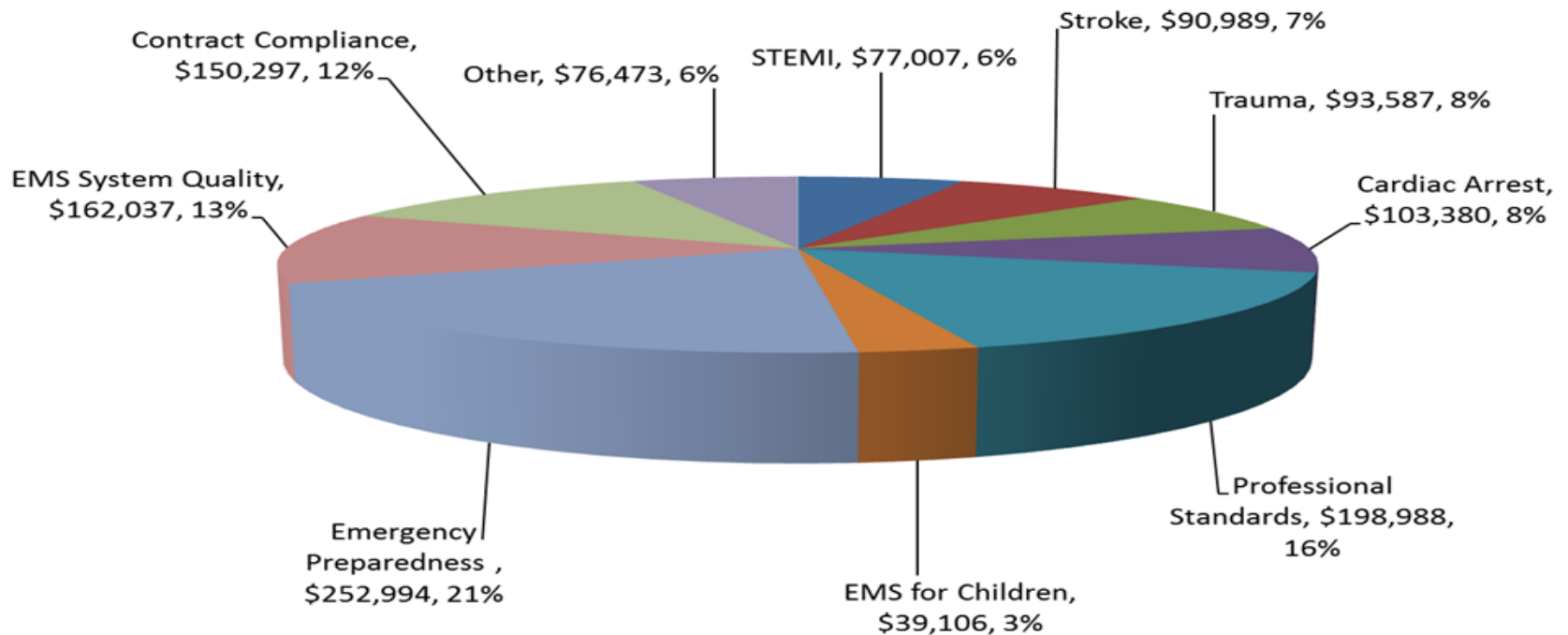
Fire First Responder Program

Annual Allocations \$2,331,133

Agency ³	Effective FY 2015-16 Full Implementation of Population Based Funding
Richmond (BLS)	\$ 223,022
El Cerrito/Kensington (ALS)	\$ 111,012
Pinole (ALS)	\$ 49,437
Rodeo-Hercules (ALS)	\$ 88,004
Crocket-Carquinez (BLS/volunteer)	\$ 7,063
Moraga Orinda (ALS/Transport)	\$ 92,748
East Contra Costa (BLS)	\$ 226,125
Contra Costa Fire (ALS)	\$ 1,533,722

EMS System of Care and Paramedic LEMSA Program Support Meeting Title 22 and State EMS System Mandates

**Contra Costa Emergency Medical Services
EMS System of Care and Paramedic Program Support*
FY 2017-2018 total \$1,243,696**

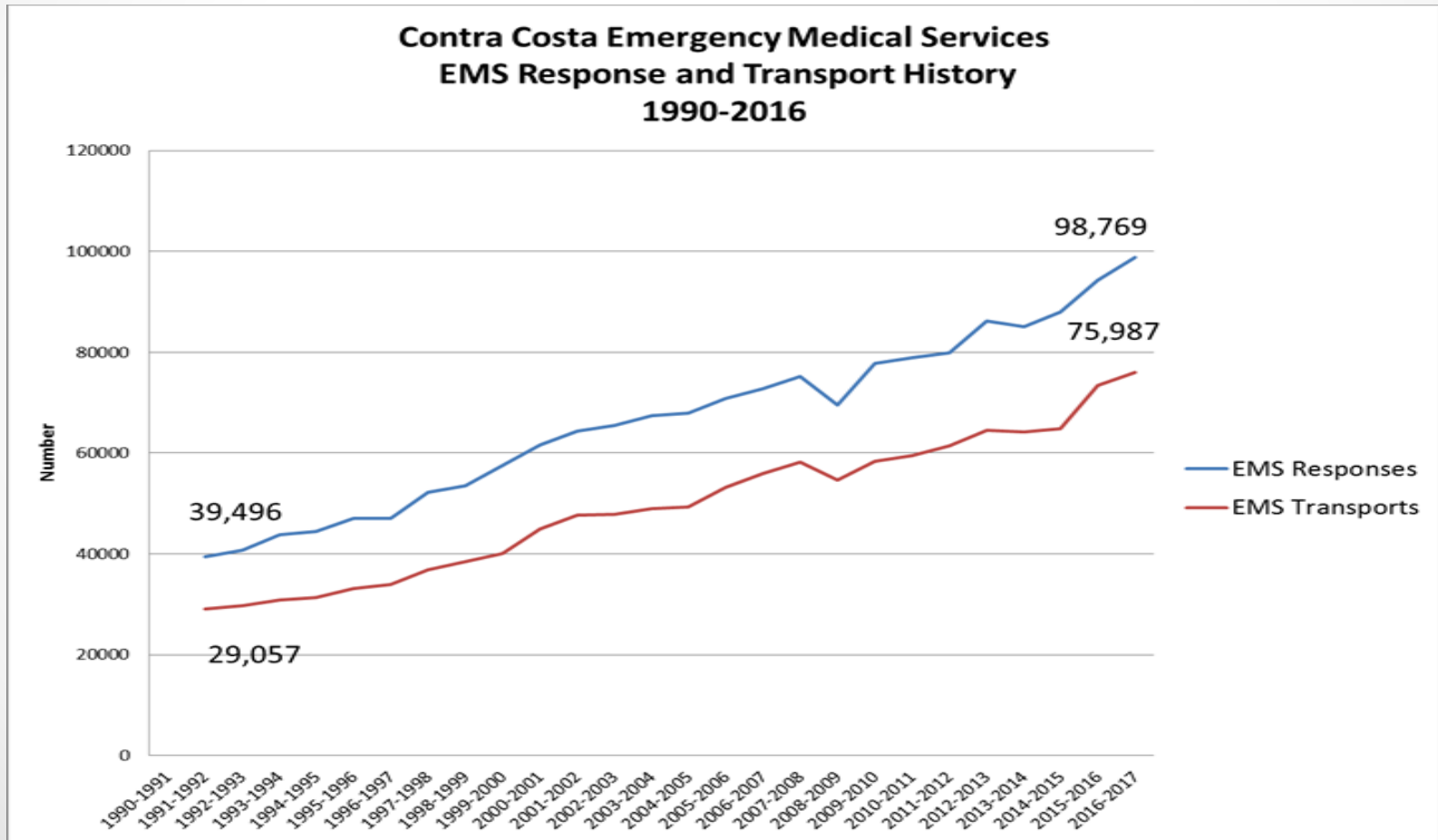


Local EMS Agency cost of compliance with local, state and grant requirements for EMS Systems and Programs

EMS System Growth and Measure H Funding ... 1990 to 2016

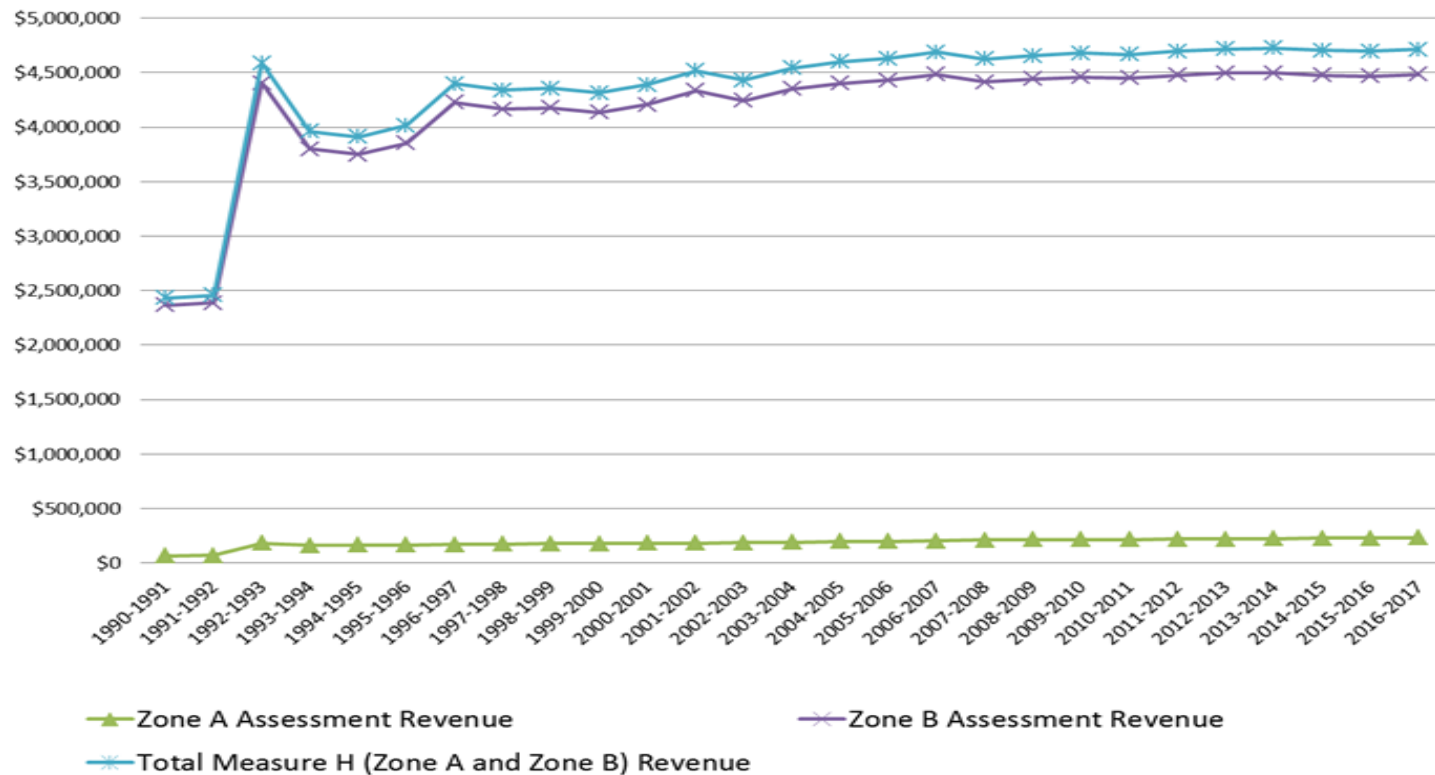
EMS Ambulance Service Delivery

1990 to 2016



Measure H Revenue History

**Measure H (Zone A + Zone B) Revenue History
1990 to 2017**



Levy and Use Fees Increases and COLAs

Further Reduce Available Funds

CSA EM-1 (Measure H) Revenue History											
Fiscal Year	EMS Responses	EMS Transports	Zone A Assessment Rate	Zone B Assessment Rate	Zone A Assessment Revenue	Zone B Assessment Revenue	Total Measure H (Zone A and Zone B) Revenue	Levy and Use Code Fees	Available Funds	CPI Increases Medical Care All Urban	CPI All Urban Bay Area
1990-1991	NA	NA	\$1.64	\$5.48	\$66,873	\$2,365,795	\$2,432,668	NA	NA		
1991-1992	39,496	29,057	\$1.64	\$5.48	\$68,887	\$2,389,217	\$2,458,104	NA	NA	8.7	4.4
1992-1993	40,780	29,774	\$3.94	\$10.00	\$181,547	\$4,405,950	\$4,587,497	NA	NA	7.4	3.3
1993-1994	43,774	30,886	\$3.94	\$10.00	\$160,484	\$3,801,300	\$3,961,784	NA	NA	5.9	2.7
1994-1995	44,473	31,332	\$3.94	\$10.00	\$164,188	\$3,748,276	\$3,912,464	NA	NA	4.8	1.6
1995-1996	46,969	33,056	\$3.94	\$10.00	\$164,188	\$3,853,526	\$4,017,714	NA	NA	4.5	2.0
1996-1997	46,980	34,010	\$3.94	\$10.00	\$170,643	\$4,227,370	\$4,398,013	NA	NA	3.5	2.3
1997-1998	52,143	36,877	\$3.94	\$10.00	\$173,211	\$4,164,993	\$4,338,204	NA	NA	2.8	3.4
1998-1999	53,490	38,510	\$3.94	\$10.00	\$176,788	\$4,179,740	\$4,356,528	NA	NA	3.2	3.2
1999-2000	57,568	40,081	\$3.94	\$10.00	\$179,315	\$4,134,573	\$4,313,888	NA	NA	3.5	4.2
2000-2001	61,531	44,931	\$3.94	\$10.00	\$183,014	\$4,206,156	\$4,389,170	\$18,786	\$4,370,384	4.1	4.5
2001-2002	64,391	47,625	\$3.94	\$10.00	\$184,083	\$4,334,861	\$4,518,944	\$19,036	\$4,499,908	4.6	5.4
2002-2003	65,549	47,858	\$3.94	\$10.00	\$186,480	\$4,246,115	\$4,432,595	\$19,309	\$4,413,286	4.7	1.6
2003-2004	67,480	48,958	\$3.94	\$10.00	\$191,466	\$4,353,031	\$4,544,497	\$19,608	\$4,524,889	4.0	1.8
2004-2005	67,966	49,314	\$3.94	\$10.00	\$198,615	\$4,403,691	\$4,602,306	\$28,058	\$4,574,248	4.4	1.2
2005-2006	70,867	53,179	\$3.94	\$10.00	\$198,922	\$4,429,758	\$4,628,680	\$28,455	\$4,600,225	4.2	2.0
2006-2007	72,849	55,946	\$3.94	\$10.00	\$204,064	\$4,485,987	\$4,690,051	\$28,982	\$4,661,069	4.0	3.2
2007-2008	75,209	58,213	\$3.94	\$10.00	\$209,838	\$4,415,486	\$4,625,324	\$30,190	\$4,595,134	4.4	3.3
2008-2009	69,473	54,692	\$3.94	\$10.00	\$214,182	\$4,442,419	\$4,656,601	\$30,496	\$4,626,105	3.7	3.1
2009-2010	77,872	58,292	\$3.94	\$10.00	\$216,182	\$4,462,228	\$4,678,410	\$30,572	\$4,647,838	3.2	0.7
2010-2011	78,850	59,534	\$3.94	\$10.00	\$217,739	\$4,450,795	\$4,668,534	\$30,655	\$4,637,879	3.4	1.4
2011-2012	79,833	61,390	\$3.94	\$10.00	\$219,404	\$4,478,438	\$4,697,842	\$30,736	\$4,667,106	3.0	2.6
2012-2013	86,134	64,527	\$3.94	\$10.00	\$220,490	\$4,495,897	\$4,716,387	\$30,809	\$4,685,578	3.7	2.7
2013-2014	85,034	64,133	\$3.94	\$10.00	\$226,028	\$4,498,377	\$4,724,405	\$30,915	\$4,693,490	2.5	2.2
2014-2015	87,974	64,870	\$3.94	\$10.00	\$227,644	\$4,476,987	\$4,704,631	\$31,049	\$4,673,582	2.4	2.8
2015-2016	94,278	73,381	\$3.94	\$10.00	\$228,924	\$4,468,326	\$4,697,250	\$31,189	\$4,666,061	2.6	2.6
2016-2017	98,769	75,987	\$3.94	\$10.00	\$230,573	\$4,483,856	\$4,714,429	\$32,189	\$4,682,240	3.8	3.0
Totals					\$5,063,772	\$112,403,148	\$117,466,920			107.0	71.2

Measure H EMS System Investment By Population

Remarkable High Value Benefit to Citizens

Fiscal Year	CoCo Population	Total Measure H Revenue	Annual Measure H Investment Per Person	Daily Measure H Investment PerPerson
1990-1991	803,732	\$2,432,688	\$3.06	\$0.01
1992-1993	803,732	\$4,587,497	\$5.71	\$0.02
1999-2000	948,816	\$4,313,888	\$4.63	\$0.01
2010-2011	1,024,809	\$4,668,534	\$4.58	\$0.01
2016-2017	1,135,127	\$4,714,429	\$4.15	\$0.01

Fiscal Year 2017-2018

...

\$ 4,862,648



Contra Costa EMS System Enhancements

• • •

Contra Costa EMS System
Support Recommended to Sustain and Improve

EMS Program Elements

- Prehospital (EMT/EMT-P)
Medical/Patient
Safety/Quality Oversight
- Fire First Responder
BLS/ALS Program
Support
- Medical Supplies,
Equipment & Training
- Sheriff's Dispatch
- HeartSafe, CPR, AED
- Disaster
Communications
- EMS Systems of Care
Medical/Quality
Oversight
- Med/Health Disaster
preparedness
- EMS Agency Personnel
and Support
- First Responder
Defibrillation Programs
- Prehospital Electronic
Patient Care and Data
Systems

EMS as Health Care Provider

EMS System Innovation Partnerships



EMS System Innovation

Data Driven Prehospital Care



MISSION:
LIFELINE



CALIFORNIA
STROKE
REGISTRY

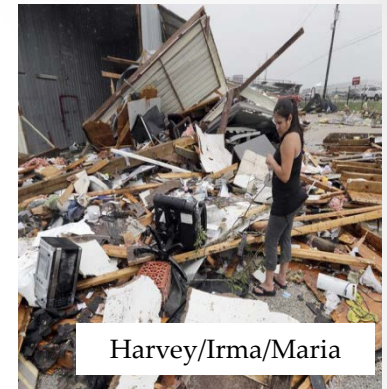
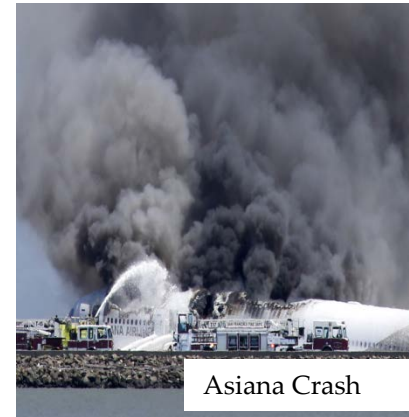


EMS COMPASS



EMS Med/Health Response

Local, Regional, National Disasters



EMS System Enhancement Requirement

Bi-directional Health Information Exchange



Where Does EMS System Funding Need To Be?

• • •

Based on consumer price index (CPI) increases for
Medical Care All Urban

Zone B charges = \$20.70/benefit unit

Zone A charges = \$8.17/benefit unit

\$9,692,236 EMS System Enhancement.

Conclusion

- Conclusion: CSA EM-1 (Measure H) provides fully utilized high value funding for enhancement of the EMS system throughout Contra Costa County. The funds have no COLA adjustments attached and cannot be adjusted or increased.
- New funding source(s) are required to sustain, update and continue the legacy of Countywide EMS System enhancement e.g. Marijuana ordinance

Questions?

